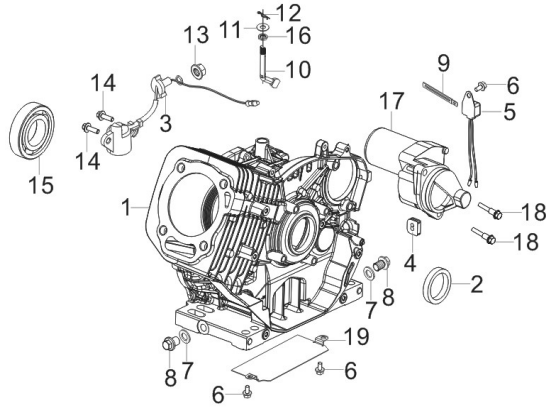


R8500D-T 发电机

FIG.1 CRANKCASE (E01)

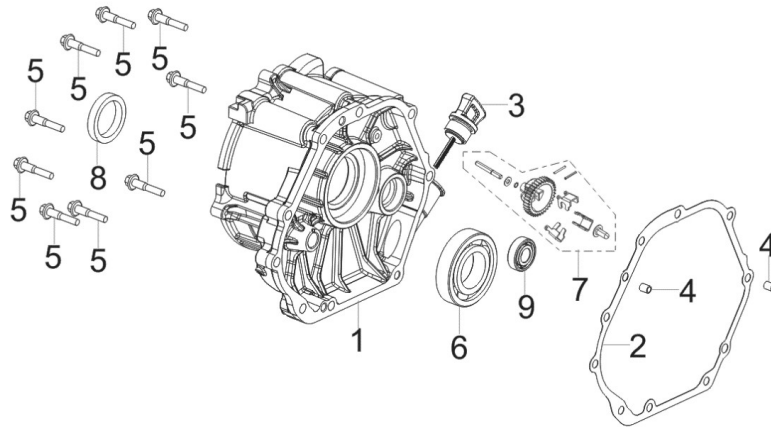
图1: 曲轴箱组合 (E01)



REF.NO. 序号	PART NO 物料代码	CHINESE 中文名	DESCRIPTION 英文名	Q'TY 数量
E01-1	11310-Z0D0110-0BA0	曲轴箱体组合	CRANKCASE SUBASSEMBLY.	1
E01-2	90682-Z0J0110-00A0	油封	SEAL, OIL	1
E01-3	37060-Z080120-00A0	机油传感器	SENSOR, ENGINE OIL	1
E01-4	28101-Z080110-00A0	橡胶塞	PLUG, RUBBER	1
E01-5	37050-Z010210-00A0	机油保护器	PROTECTOR, OIL	1
E01-6	90001-0610-01A0	六角法兰面螺栓	BOLT	3
E01-7	90412-Z080110-00A0	平垫圈	FLAT WASHER	2
E01-8	11007-Z080110-00A0	放油螺栓	BOLT, DRAIN PLUG	2
E01-9	90684-Z010310-00A0	线夹	WIRE CLIP	1
E01-10	16061-Z0D0110-00A0	调速臂	ARM, GOVERNOR	1
E01-11	90412-Z080210-00A0	平垫圈	FLAT WASHER	1
E01-12	90501-Z010110-00A0	开口销	COTTER PIN	1
E01-13	90305-Z010210-01A0	六角法兰面螺母	HEXAGON NUT WITH FLANGE	1
E01-14	90001-0616-01A0	六角法兰面螺栓	BOLT	2
E01-15	90548-0202-CLA0	深沟球轴承	DEEP GROOVE BALL BEARING	1
E01-16	90682-Z100210-00A0	油封	SEAL, OIL	1
E01-17	09100-Z170410-00A0	起动机组件	MOTOR, STARTING	1
E01-18	90001-0835-01A0	六角法兰面螺栓-小系列	HEXAGON SOCKET FLANGE FACE BOLT - SMALL SERIE	2
E01-19	19306-Z0D0110-00A0	箱体导风板	DEFLECTOR, CRANKCASE AIR	1

FIG.2 COVER, CRANKCASE (E02)

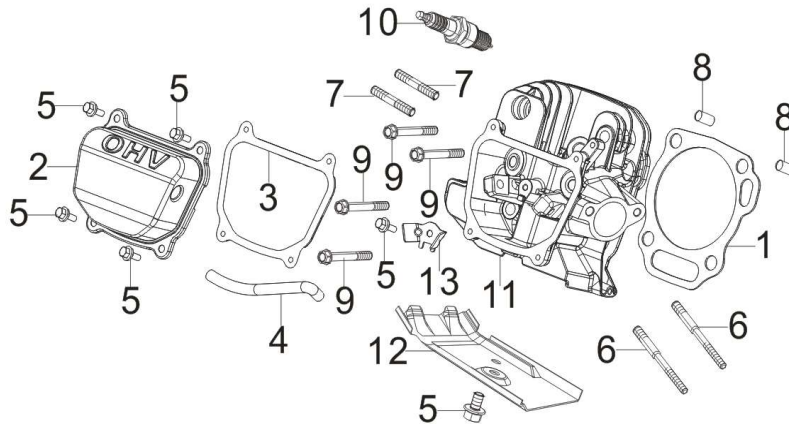
图2: 曲轴箱盖总成 (E02)



REF.NO. 序号	PART NO 物料代码	CHINESE 中文名	DESCRIPTION 英文名	Q'TY 数量
E02-1	11411-Z0D0110-0BA1	曲轴箱盖	COVER, CRANKCASE	1
E02-2	11001-Z0D0110-00A0	曲轴箱密封垫	GASKET, CRANKCASE	1
E02-3	15010-Z080330-Q5A0	机油尺组合	DIPSTICK SUBASSEMBLY, OIL	1
E02-4	90502-0812-00A0	定位销	POSITION PIN	2
E02-5	90007-0840-A1A0	六角法兰面螺栓	BOLT	9
E02-6	90547-0208-CLAE	深沟球轴承	DEEP GROOVE BALL BEARING	1
E02-7	16400-Z0Y0110-00A0	调速齿轮部件	GEAR ASSY, GOVERNOR	1
E02-8	90682-Z0J0110-00A0	油封	SEAL, OIL	1
E02-9	90548-0202-CLA0	深沟球轴承	DEEP GROOVE BALL BEARING	1

FIG.3 CYLINDER HEAD, CYLINDER COVER ASSY (E03)

图3:汽缸头组合 (E03)

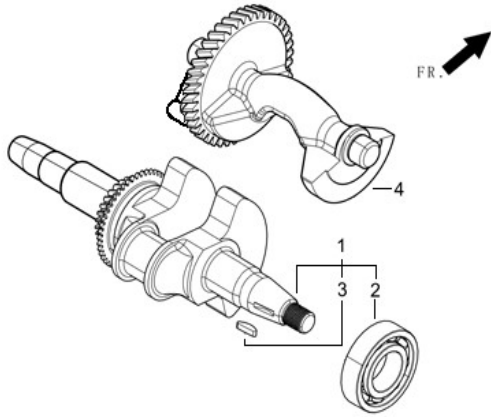


REF.NO. 序号	PART NO 物料代码	CHINESE 中文名	DESCRIPTION 英文名	Q'TY 数量
E03-1	12131-Z0D0210-00A0	汽缸头密封垫	GASKET, CYLINDER HEAD	1
E03-2	12410-Z0J0410-00A0	汽缸头盖组合	COVER SUBASSEMBLY, CYLINDER HEAD	1
E03-3	12004-Z0J0710-00A0	汽缸头盖密封垫	CYLINDER HEAD COVER GASKET	1
E03-4	17004-Z0D0110-00A0	废气管	TUBE, BREATHER	1
E03-5	90001-0612-01A0	六角法兰面螺栓	BOLT	6
E03-6	90204-Z100410-00A0	双头螺柱	STUD BOLT	2
E03-7	90203-Z010110-00A0	双头螺柱	STUD BOLT	2
E03-8	90502-1220-00A0	定位销-A型	POSITION PIN - TYPE A	2

E03-9	12003-Z0N0110-00A0	气缸头螺栓	CYLINDER HEAD BOLT	4
E03-10	30010-Z010110-00A0	火花塞	PLUG, SPARK	1
E03-11	12140-Z0D0710-0BA0	气缸头组合	HEAD SUBASSEMBLY, CYLINDER	1
E03-12	19304-Z100210-00A0	缸体导风罩	SHROUD, CYLINDER BODY	1
E03-13	12419-Z950311-00A0	缸头盖销子限位板	CYLINDER HEAD COVER PIN LIMIT PLATE	1

FIG.4 CRANKSHAFT ASSY.(E04)

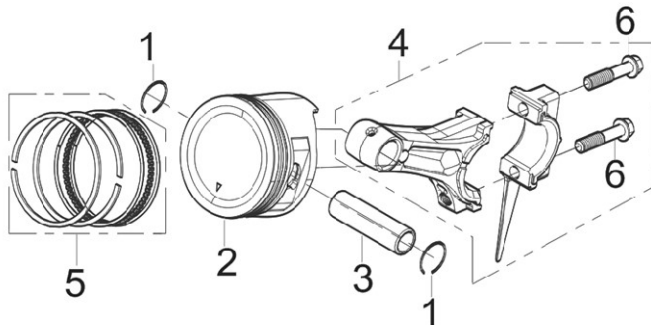
图4:曲轴 (E04)



REF.NO. 序号	PART NO 物料代码	CHINESE 中文名	DESCRIPTION 英文名	Q'TY 数量
E04-1	13300-Z0D0112-CLAT	曲轴部件	CRANKSHAFT ASSY.	1
E04-4	13401-Z0D0110-00A0	平衡轴部件	SHAFT ASSY, BALANCING	1

FIG.5 PISTON/CONNECTING ROD (E05)

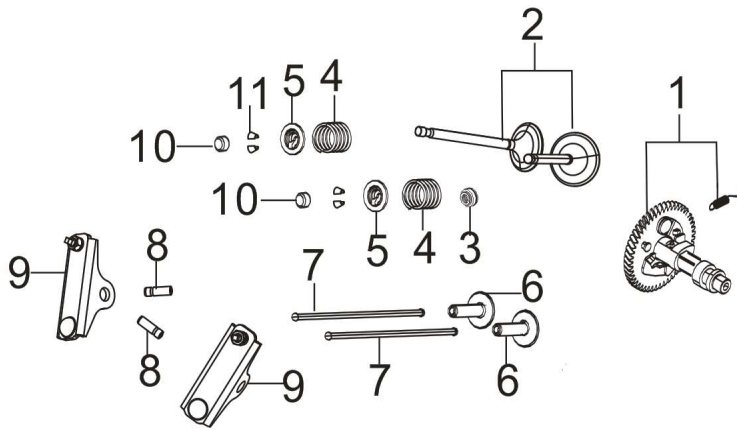
图5:活塞、连杆组件 (E05)



REF.NO. 序号	PART NO 物料代码	CHINESE 中文名	DESCRIPTION 英文名	Q'TY 数量
E05-1	13122-Z100110-00A0	活塞销卡圈	CLIP, PISTON PIN	2
E05-2	13111-Z0D0211-00A0	活塞	PISTON	1
E05-3	13121-Z1X0110-0000	活塞销	PIN, PISTON	1
E05-4	13010-Z0D0311-00A0	连杆	ROD, CONNECTING	1
E05-5	13200-Z0D0110-00A9	活塞环部件	RING ASSY, PISTON	1

FIG.6 CAMSHAFT ASSY. (E06)

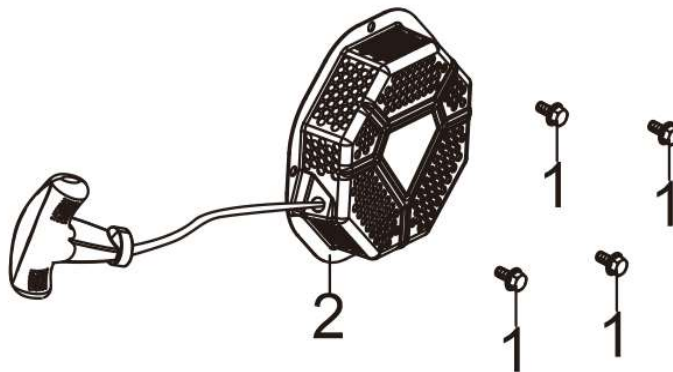
图6:凸轮轴、气门组合 (E06)



REF.NO. 序号	PART NO 物料代码	CHINESE 中文名	DESCRIPTION 英文名	Q'TY 数量
E06-1	14200-Z0D0210-00A0	凸轮轴部件	CAMSHAFT ASSY.	1
E06-2	12110-Z0D0210-00A0	气门组件	VALVES SET	1
E06-3	12101-Z020110-00A0	挡油罩	GUIDE, SEAL	1
E06-4	12103-Z990110-00A0	气门弹簧	SPRING, VALVE	2
E06-5	12112-Z0D0210-00A0	气门弹簧座	SEAT, VALVE SPRING	2
E06-6	14081-Z080110-00A0	气门挺柱	TAPPET, VALVE	2
E06-7	14070-Z0D0110-00A0	气门挺杆组合	LIFTER SUBASSEMBLY, VALVE	2
E06-8	14318-Z0D0210-00A0	摇臂轴组合	SHAFT SUBASSEMBLY, ROCKER	2
E06-9	14310-Z0D0110-00A0	气门摇臂	ROCKER, VALVE	2
E06-10	12104-Z010110-00A0	气门调整帽	ROTATOR, VALVE	2
E06-11	12109-Z0D0210-00A0	气门锁夹	CLAMP, VALVE LOCK	4

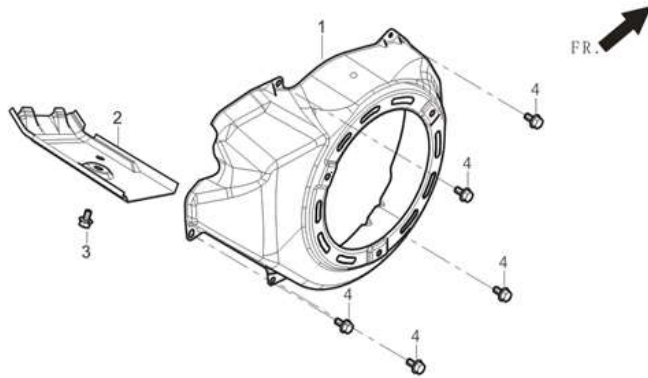
FIG.7 STARTER,RECOIL (E07)

图7:手起动机件 (E07)



REF.NO. 序号	PART NO 物料代码	CHINESE 中文名	DESCRIPTION 英文名	Q'TY 数量
E07-1	90251-0608-01A0	六角法兰面螺栓	BOLT	4
E07-2	28200-Z190610-Y1A0	手起动机件	STARTER ASSY, RECOIL	1

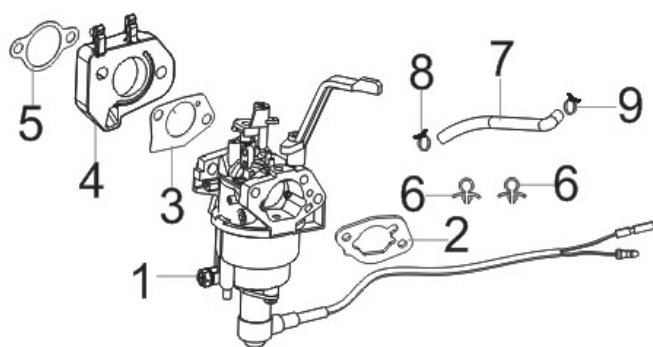
FIG.8 SHROUD / SHIELD,LOWER 缸体导风罩/下护罩 (E08)



REF.NO. 序号	PART NO 物料代码	CHINESE 中文名	DESCRIPTION 英文名	Q'TY 数量
E08-1	28110-Z710510-Y1A0	导风罩	SHROUD	1
E08-2	19304-Z100210-00A0	缸体导风罩	SHROUD, CYLINDER BODY	1
E08-3	90001-0612-01A0	六角法兰面螺栓	BOLT	1
E08-4	90001-0612-01A0	六角法兰面螺栓	BOLT	5

FIG.8 CARBURETOR ASSY.(E09)

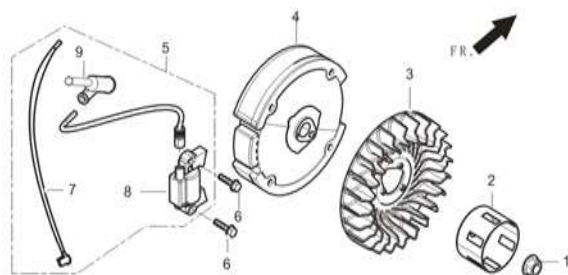
图8:化油器 (E09)



REF.NO. 序号	PART NO 物料代码	CHINESE 中文名	DESCRIPTION 英文名	Q'TY 数量
E09-1	16100-Z0D1110-00A0	化油器部件	CARBURETOR ASSY.	1
E09-2	17001-Z0D0110-00A0	空滤器密封垫	AIR CLEANER SEAL GASKET	1
E09-3	16001-Z100110-00A0	化油器密封垫	CARBURETOR SEAL GASKET	1
E09-4	16003-Z0D0110-0001	化油器隔热板	PLATE, CARBURETOR INSULATOR	1
E09-5	17002-Z0D0110-00A0	进气口密封垫	GASKET, INLET	1
E09-6	90684-Z030210-00A0	线夹	WIRE CLIP	2
E09-7	90686-Z080410-00A0	油管	TUBE, FUEL	1
E09-8	90685-D075-0EA0	管夹	PIPE CLAMP	1
E09-9	90740-Z010210-00A0	卡箍	COLLAR	1

FIG.9 FLYWHEEL SUBASSEMBLY (E10)

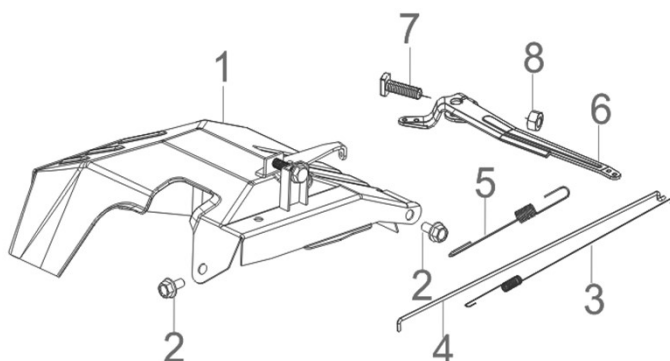
图9: 飞轮组合 (E10)



REF.NO. 序号	PART NO 物料代码	CHINESE 中文名	DESCRIPTION 英文名	Q'TY 数量
E10-1	13501-Z080111-00A0	飞轮螺母	NUT, FLYWHEEL	1
E10-2	28002-Z100210-00A0	起动机杯	PULLEY, STARTER	1
E10-3	19352-Z100210-00A0	叶轮	IMPELLER	1
E10-4	13510-Z0D0411-0000	飞轮组合	FLYWHEEL SUBASSEMBLY	1
E10-5	30400-Z310311-00A0	点火线圈	COIL, IGNITION	1
E10-6	90001-0628-01A0	六角法兰面螺栓	BOLT	2

FIG.10 CONTORL ASSY.(E11)

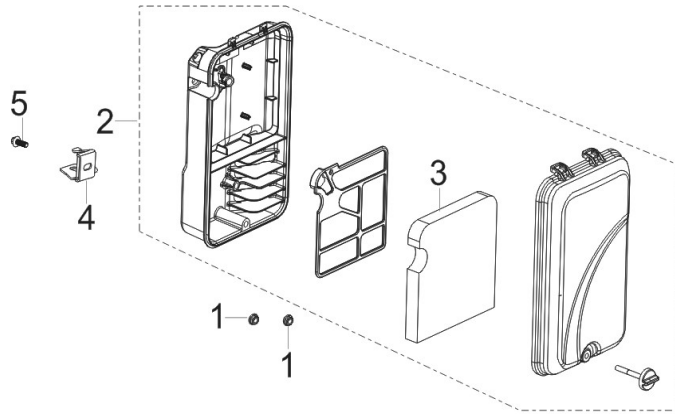
图10:调速器 (E11)



REF.NO. 序号	PART NO 物料代码	CHINESE 中文名	DESCRIPTION 英文名	Q'TY 数量
E11-1	16520-Z0D0111-00A0	油门操纵组合	CONTROL ASSY, THROTTLE	1
E11-2	90001-0612-01A0	六角法兰面螺栓	BOLT	2
E11-3	16012-Z080110-00A0	节气门复位弹簧	SPRING, THROTTLE VALVE RETURNING	1
E11-4	16062-Z0D0211-01A0	调速拉杆	ROD, GOVERNEOR	1
E11-5	16063-Z0D0710-00A0	调速弹簧	SPRING, GOVERNOR	1
E11-6	16070-Z100310-01A0	调速支架组合	GOVERNOR BRACKET SUBASSEMBLY	1
E11-7	16072-Z010410-01A0	调速支架固定螺栓	BOLT, GOVERNOR SUPPORT	1
E11-8	90305-0600-31A0	六角法兰面螺母	HEXAGON NUT WITH FLANGE	1

FIG.11 AIR CLEANER (F01)

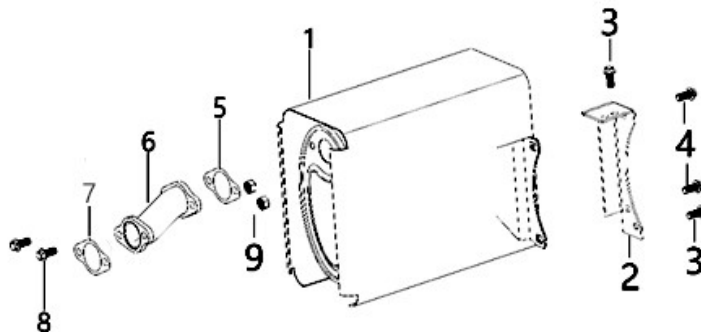
图11: 空滤器 (F01)



REF.NO. 序号	PART NO 物料代码	CHINESE 中文名	DESCRIPTION 英文名	Q'TY 数量
F01-1	90305-0600-31A0	六角法兰面螺母	HEXAGON NUT WITH FLANGE	2
F01-2	17100-Z0D0110-00A9	空滤器	AIR CLEANER	1
F01-3	17151-Z0D0110-0000	空滤器滤芯	ELEMENT, AIR CLEANER	1
F01-4	17003-YC20110-00A0	空滤器支架	SUPPORT, ATR CLEANER	1
F01-5	90001-0612-01A0	六角法兰面螺栓	BOLT	1

FIG.12 MUFFLER ASSY.(F02)

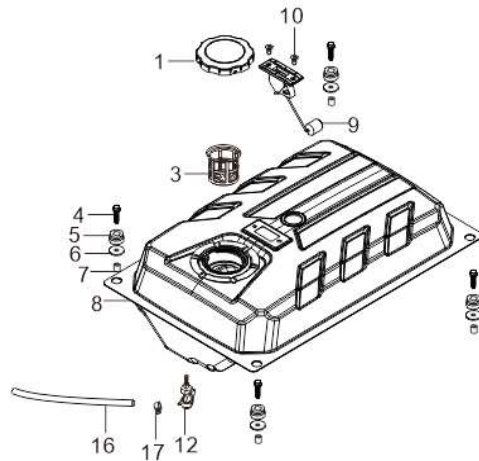
图12:消声器 (F02)



REF.NO. 序号	PART NO 物料代码	CHINESE 中文名	DESCRIPTION 英文名	Q'TY 数量
F02-1	18100-YCK0110-00A0	消声器部件	MUFFLER ASSY.	1
F02-2	18030-Y730110-00A0	消声器支架	BRACKET,MUFFLER	1
F02-3	90001-0816-01A0	六角法兰面螺栓-小系列	HEXAGON SOCKET FLANGE FACE BOLT - SMALL SERIE	2
F02-4	90001-0816-01A0	六角法兰面螺栓-小系列	HEXAGON SOCKET FLANGE FACE BOLT - SMALL SERIE	2
F02-5	18101-YDK0110-00A0	消声器密封垫	GASKET, MUFFLER	1
F02-6	18150-Z0D0310-00A0	排气管	PIPE, EXHAUST	1
F02-7	18101-Z0D0110-00A0	消声器密封垫	GASKET, MUFFLER	1
F02-8	90001-0830-01A0	六角法兰面螺栓	BOLT	2
F02-9	90303-0800-31A0	1型六角螺母	TYPE 1 HEXAGON NUT	2

FIG.13 TANK, FUEL (F03)

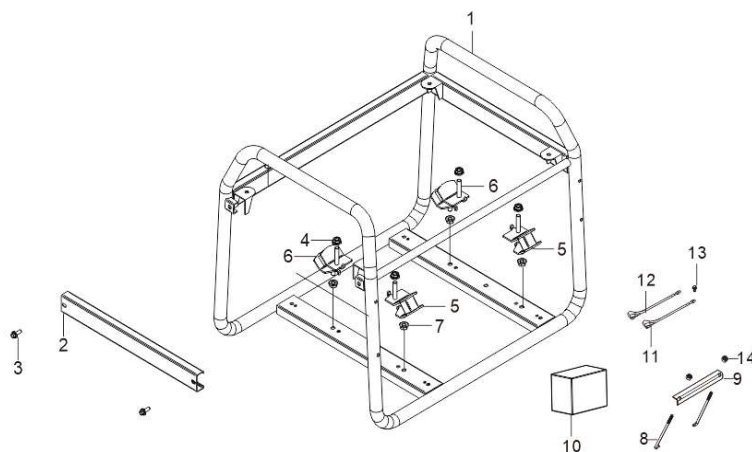
图13:油箱 (F03)



REF.NO. 序号	PART NO 物料代码	CHINESE 中文名	DESCRIPTION 英文名	Q'TY 数量
F03-1	16730-YN60410-00A0	油箱盖	COVER, FUEL TANK	1
F03-3	16652-Y020120-00A0	燃油滤网	STRAINER, FUEL	1
F03-4	90007-0625-A1A0	六角法兰面螺栓-小系列	HEXAGON SOCKET FLANGE FACE BOLT - SMALL SERIE	4
F03-5	16601-Y020120-00A0	油箱支撑胶套	SLEEVE, FUEL TANK RUBBER	4
F03-6	90408-Y020310-00A0	平垫圈-A级	FLAT WASHER - GRADE A	4
F03-7	90683-Y020110-00A0	衬套	BUSH	4
F03-8	16620-YGW0110-Y1A0	油箱	FUEL TANK	1
F03-9	37200-Y1J0110-H7A1	油标部件	LEVELER ASSY, OIL	1
F03-10	90104-0512-51A0	十字槽沉头螺钉(4.8级)	CROSS RECESSED COUNTERSUNK HEAD SCREW (GRA	2
F03-12	16750-Y020211-00A0	油开关组合	COCK ASSY, FUEL	1
F03-16	30431-Y030110-00A0	橡胶护套	JACKET, RUBBER	1
F03-17	90740-Z010210-00A0	卡箍	COLLAR	1

FIG.14 FRAME, ENGINE (F04)

图14:机架组件 (F04)

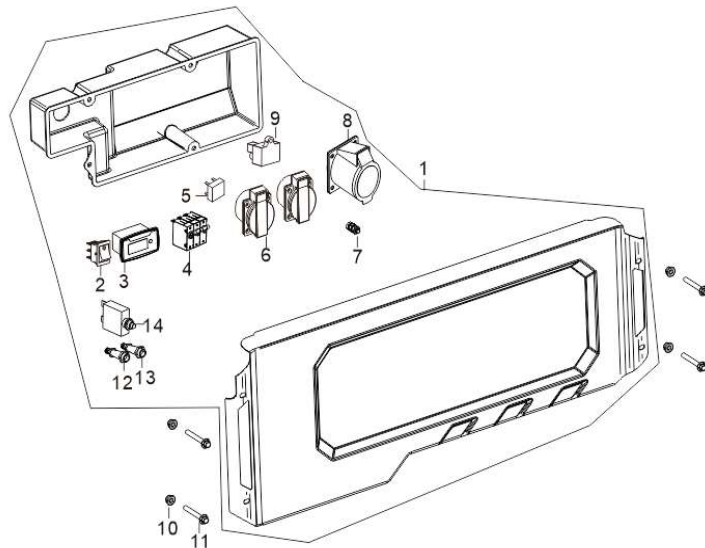


REF.NO. 序号	PART NO 物料代码	CHINESE 中文名	DESCRIPTION 英文名	Q'TY 数量
F04-1	51100-YJM0110-H7A0	机架部件	FRAME ASSY, ENGINE	1

F04-2	51150-YGW0110-H7A0	横挡组合	CROSSPIECE SUBASSEMBLY	1
F04-3	90001-0612-01A0	六角法兰面螺栓	BOLT	2
F04-4	90306-1000-31A0	六角法兰面螺母	HEXAGON NUT WITH FLANGE	4
F04-5	51012HY030120-00A0	机架后减震垫	CUSHION, ENGINE FRAME REAR	2
F04-6	51012HY030120-00A0	机架后减震垫	CUSHION, ENGINE FRAME REAR	2
F04-7	90305-0800-31A0	六角法兰面螺母	HEXAGON NUT WITH FLANGE	4
F04-8	31151-Y030120-00A0	蓄电池固定螺栓	BOLT, BATTERY	2
F04-9	31142-Y030120-H7A0	蓄电池压板	CLAMP, BATTERY	1
F04-10	31110-Y230110-00A0	蓄电池	BATTERY	1
F04-11	31112HY130310-00A0	正极线	WIRE, ANODE	1
F04-12	31114HY130310-00A0	负极线	WIRE, CATHODE	1
F04-13	90007-0612-A1A0	六角法兰面螺栓-加大系列-B级	HEXAGON SOCKET FLANGE FACE BOLT - BIG SERIES -	1
F04-14	90305-0600-31A0	六角法兰面螺母	HEXAGON NUT WITH FLANGE	2

FIG.15 PANEL SUBASSEMBLY, CONTROL (F05)

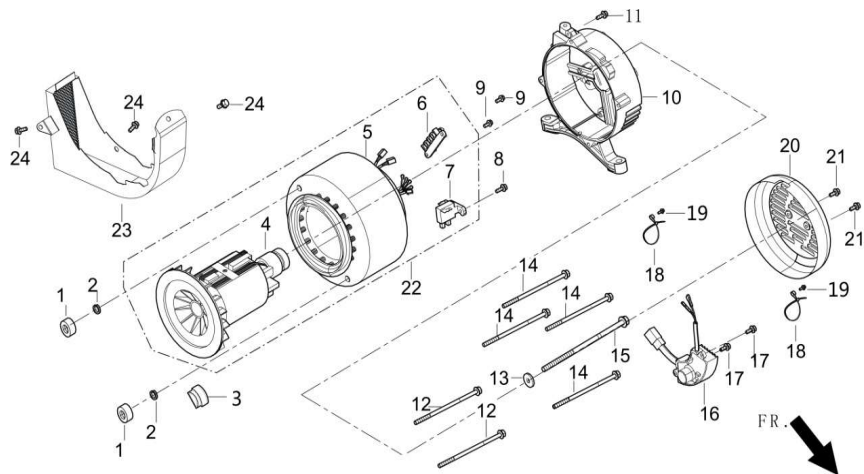
图15:控制面板组件 (F05)



REF.NO. 序号	PART NO 物料代码	CHINESE 中文名	DESCRIPTION 英文名	Q'TY 数量
F05-1	35610-YKR0310-H7A0	控制面板组合	PANEL SUBASSEMBLY, CONTROL	1
F05-2	35160-Y210110-0000	开关组合件	SWITCH SUBASSEMBLY	1
F05-3	35632-Y400110-0000	计时器	TIMER	1
F05-4	35698-Y0X0110-0000	三极断路器	THREE-POLES BREAKERS	1
F05-5	35621-Y020110-0000	整流桥	BRIDGE, RECTIFICATION	1
F05-6	35614-Y020110-0000	电源插座组合	SOCKET SUBASSEMBLY, POWER SUPPLY	1
F05-7	35629-Y280110-0000	接地端子组合	TERMINAL SUBASSEMBLY, GROUNDING	1
F05-8	35614-Y6X0110-0000	电源插座组合	SOCKET SUBASSEMBLY, POWER SUPPLY	1
F05-9	30007-YCK0110-0000	充电模块	CHARGER MODULE	1
F05-10	90310-0600-31A0	2型全金属六角法兰面锁紧	TYPE 2 ALL METAL HEXAGON LOCK NUT WITH FLANG	4
F05-11	90001-0645-01A0	六角法兰面螺栓-小系列	HEXAGON SOCKET FLANGE FACE BOLT - SMALL SERIE	4
F05-12	35633-Y020110-0000	正极接线柱	TERMINAL, POSITIVE ELECTRODE	1
F05-13	35634-Y020110-0000	负极接线柱	TERMINAL, NEGATIVE ELECTRODE	1
F05-14	31234-Y9H0110-0000	过流保护器	PROTECTOR, OVERCURRENT	1

FIG.16 ROTOR/STATOR (F06)

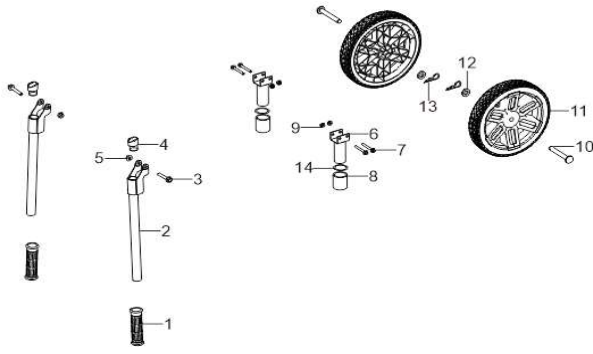
图16:电机组件 (F06)



REF.NO. 序号	PART NO 物料代码	CHINESE 中文名	DESCRIPTION 英文名	Q'TY 数量
F06-1	31317-Y030110-00A0	定子固定螺母	NUT, STATOR	2
F06-2	90403-0500-03A0	标准型弹簧垫圈	STANDARD SPRING WASHER	2
F06-3	30023-YC20110-00A0	电机右盖挡块	STOPPER, MOTOR RIGHT COVER	1
F06-6	31303HY020110-0000	接线板	BLOCK, TERMINAL	1
F06-7	31320-Y030120-0000	碳刷组合	BRUSH SUBASSEMBLY, CARBON	1
F06-8	90001-0516-01A0	六角法兰面螺栓-小系列	HEXAGON SOCKET FLANGE FACE BOLT - SMALL SERIE	1
F06-9	90001-0516-01A0	六角法兰面螺栓-小系列	HEXAGON SOCKET FLANGE FACE BOLT - SMALL SERIE	2
F06-10	30021-Y030310-00A0	电机支架	MOTOR SUPPORT	1
F06-11	90001-0512-01A0	六角法兰面螺栓-小系列	HEXAGON SOCKET FLANGE FACE BOLT - SMALL SERIE	1
F06-12	31316-Y950120-00A0	定子固定螺栓	STATOR BOLT	2
F06-13	90408-Y030110-00A0	平垫圈-A级	FLAT WASHER - GRADE A	1
F06-14	30048-Y950110-00A0	定子螺栓	STATOR BOLT	4
F06-15	30049-Y950110-00A0	转子螺栓	BOLT, ROTOR	1
F06-16	30060-YDT0210-00A0	调压器	REGULATOR, VOLTAGE	1
F06-17	90001-0516-01A0	六角法兰面螺栓-小系列	HEXAGON SOCKET FLANGE FACE BOLT - SMALL SERIE	2
F06-18	90727-Y020110-00A0	扎带	BAND	2
F06-19	90001-0516-01A0	六角法兰面螺栓-小系列	HEXAGON SOCKET FLANGE FACE BOLT - SMALL SERIE	2
F06-20	30022-Y030110-Y1A0	电机尾盖	MOTOR TAIL COVER	1
F06-21	90001-0512-01A0	六角法兰面螺栓-小系列	HEXAGON SOCKET FLANGE FACE BOLT - SMALL SERIE	2
F06-22	31300-YDT0210-00A0	电机部件	MOTOR ASSY.	1
F06-23	30024-Y730110-00A0	电机导风罩	SHROUD, MOTOR	1
F06-24	90001-0510-01A0	六角法兰面螺栓-小系列	HEXAGON SOCKET FLANGE FACE BOLT - SMALL SERIE	3

FIG.19 WHEEL ASSY,FRONT (F07)

图19: 车轮组件 (F07)



REF.NO. 序号	PART NO 物料代码	CHINESE 中文名	DESCRIPTION 英文名	Q'TY 数量
F07-1	54101-Y020110-00A0	手把胶套	SLEEVE, HANDLE RUBBER	2
F07-2	54110-Y030420-H7A0	手把管组合	HANDLE TUBE ASSY	2
F07-3	90001-0850-01A0	六角法兰面螺栓	BOLT	2
F07-4	54102-Y020410-00A0	手把管支撑	HANDLE TUBE CONNECTING SEAT	2
F07-5	90310-0800-31A0	2型全金属六角法兰面锁紧螺母	TYPE 2 ALL METAL HEXAGON LOCK NUT WITH FLANG	2
F07-6	51016-Y090410-H7A0	机架减震座支架	SUPPORT, ENGINE FRAME SHOCK ABSORPTION	2
F07-7	90007-0645-A1A0	六角法兰面螺栓-小系列	HEXAGON SOCKET FLANGE FACE BOLT - SMALL SERIE	4
F07-8	51039-Y090110-00A0	机架减震座支架胶套	ENGINE FRAME SHOCK ABSORPTION SUPPORT SLEEV	2
F07-9	90305-0600-31A0	六角法兰面螺母	HEXAGON NUT WITH FLANGE	4
F07-10	44020-YGW0110-01A0	前轮轴	SHAFT, FRONT WHEEL	2
F07-11	44110-Y020710-00A0	前轮	WHEEL, FRONT	2
F07-12	53007-Y730110-0000	衬垫	PAD	2
F07-13	93124-U050110-0100	插销	SOCKET	2
F07-14	90408-Y090110-01A0	平垫圈	FLAT WASHER	2