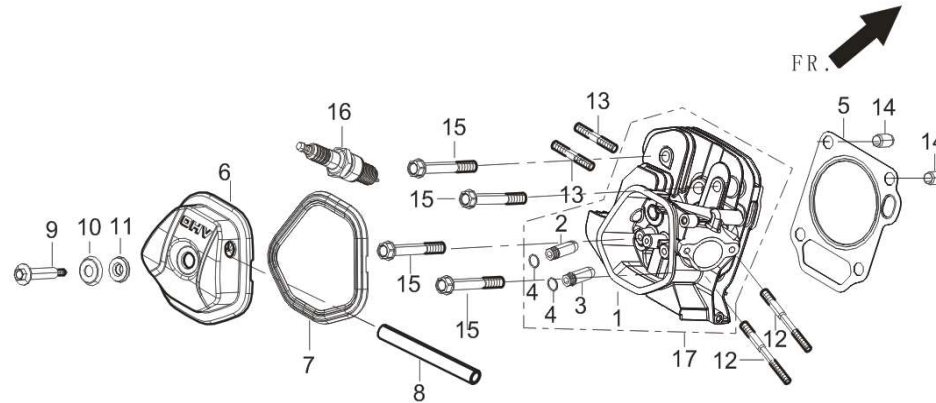


# R6000D GENERATOR 发电机

FIG.1 CYLINDER HEAD, CYLINDER COVER ASSY (E01)

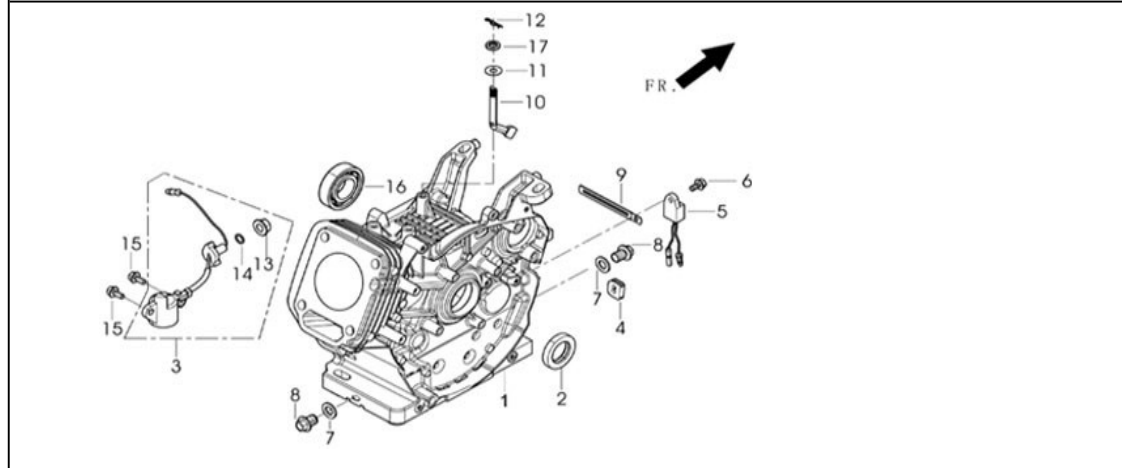
图1:汽缸头组合 (E01)



REF.NO. 序号	PART NO 物料代码	CHINESE 中文名	DESCRIPTION 英文名	Q'TY 数量
E01-5	12131-Z190410-00A0	汽缸头密封垫	GASKET, CYLINDER HEAD	1
E01-6	12410-Z310110-00A0	汽缸头盖组合	COVER SUBASSEMBLY, CYLINDER HEAD	1
E01-7	12004-Z080110-0001	汽缸头盖密封垫	CYLINDER HEAD COVER GASKET	1
E01-8	17004-Z080320-00A0	废气管	TUBE, BREATHER	1
E01-9	12032-Z080111-01A0	缸头盖螺栓	CYLINDER HEAD COVER BOLT	1
E01-10	12034-Z080110-00A9	缸头盖螺栓密封垫+垫片组	R HEAD COVER BOLT GASKET + WASHER SUBA	1
E01-11				
E01-12	90204-Z100410-01A0	双头螺柱	STUD BOLT	2
E01-13	90203-Z010110-01A0	双头螺柱	STUD BOLT	2
E01-14	90502-1220-00A0	定位销	POSITION PIN	2
E01-15	12003-Z080110-00A0	汽缸头螺栓	CYLINDER HEAD BOLT	4
E01-16	30010-Z010110-00A0	火花塞	PLUG, SPARK	1
E01-17	12140-Z190150-0BA9	汽缸头组合	HEAD SUBASSEMBLY, CYLINDER	1

**FIG.2 CRANKCASE (E02)**

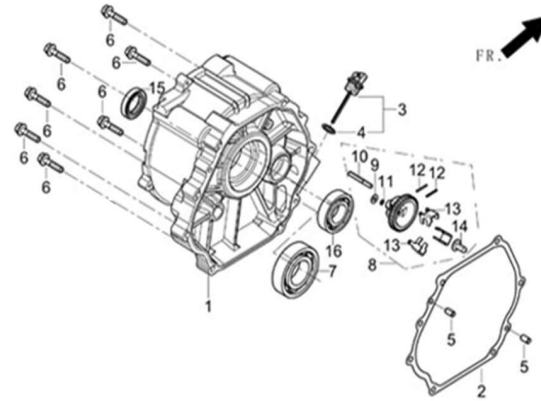
**图2: 曲轴箱组合 (E02)**



REF.NO. 序号	PART NO 物料代码	CHINESE 中文名	DESCRIPTION 英文名	Q'TY 数量
E02-1	11310-Z190710-0BA0	曲轴箱体组合	CRANKCASE SUBASSEMBLY.	1
E02-2	90682-Z310110-00A0	油封	SEAL, OIL	1
E02-3	37060-Z080120-00A0	机油传感器	SENSOR, ENGINE OIL	1
E02-4	28101-Z080110-00A0	橡胶塞	PLUG, RUBBER	1
E02-5	37050-Z010210-00A0	机油保护器	PROTECTOR, OIL	1
E02-6	90001-0612-01A0	六角法兰面螺栓	BOLT	1
E02-7	90412-Z080110-00A0	垫圈	GASKET	2
E02-8	11007-Z080110-00A0	放油螺栓	BOLT, DRAIN PLUG	2
E02-9	90684-Z030120-00A0	线夹	WIRE CLIP	1
E02-10	16061-Z100110-00A0	调速臂	ARM, GOVERNOR	1
E02-11	90412-Z080210-00A0	平垫圈	FLAT WASHER	1
E02-12	90501-Z010110-00A0	开口销	COTTER PIN	1
E02-13	90305-Z010210-01A0	六角法兰面螺母	HEXAGON NUT WITH FLANGE	1
E02-15	90001-0616-01A0	六角法兰面螺栓	BOLT	2
E02-16	90548-0202-CLA0	深沟球轴承	DEEP GROOVE BALL BEARING	1
E02-17	90682-Z100210-00A0	油封	SEAL, OIL	1

**FIG.3 COVER, CRANKCASE (E03)**

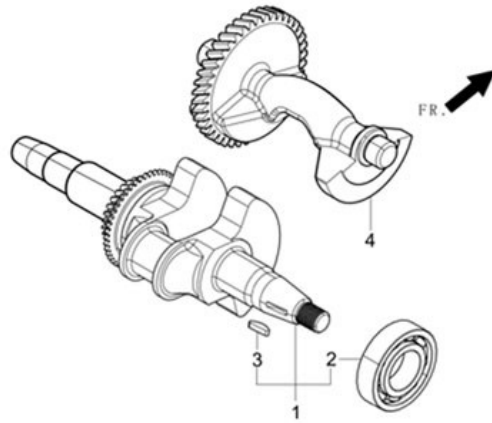
**图3:曲轴箱盖总成 (E03)**



REF.NO. 序号	PART NO 物料代码	CHINESE 中文名	DESCRIPTION 英文名	Q'TY 数量
E03-1	11411-Z6L0110-0BA0	曲轴箱盖	COVER, CRANKCASE	1
E03-2	11001-Z100120-00A0	曲轴箱密封垫	GASKET, CRANKCASE	1
E03-3	15010-Z080330-Q5A0	机油尺组合	DIPSTICK SUBASSEMBLY, OIL	1
E03-5	90502-0812-00A0	定位销-A型	POSITION PIN - TYPE A	2
E03-6	90001-0840-01A0	六角法兰面螺栓	BOLT	7
E03-7	90548-0207-CLA0	深沟球轴承	DEEP GROOVE BALL BEARING	1
E03-8	16400-Z100110-00A0	调速齿轮部件	GEAR ASSY, GOVERNOR	1
E03-15	90682-Z310110-00A0	油封	SEAL, OIL	1
E03-16	90548-0202-CLA0	深沟球轴承	DEEP GROOVE BALL BEARING	1

**FIG.4 CRANKSHAFT ASSY.(E04)**

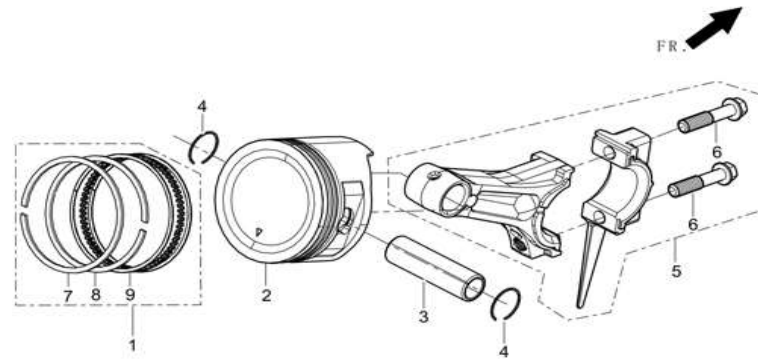
**图4:曲轴 (E04)**



REF.NO. 序号	PART NO 物料代码	CHINESE 中文名	DESCRIPTION 英文名	Q'TY 数量
E04-1	13300-Z192910-00A0	曲轴部件	CRANKSHAFT ASSY.	1
E04-4	13400-Z190320-00A1	平衡轴	BALANCING SHAFT	1

**FIG.5 PISTON/CONNECTING ROD (E05)**

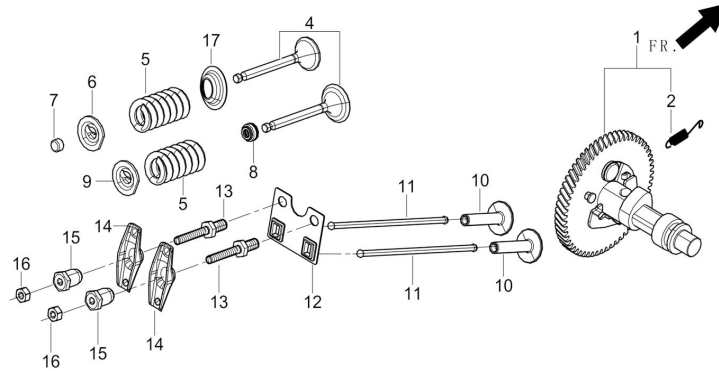
**图5:活塞、连杆组件 (E05)**



REF.NO. 序号	PART NO 物料代码	CHINESE 中文名	DESCRIPTION 英文名	Q'TY 数量
E05-1	13200-Z190210-00A9	活塞环部件	RING ASSY, PISTON	1
E05-2	13111-Z190310-00A9	活塞	PISTON	1
E05-3	13121-Z100110-00A0	活塞销	PIN, PISTON	1
E05-4	13122-Z100110-00A0	活塞销卡圈	CLIP, PISTON PIN	2
E05-5	13010-Z190121-00A0	连杆	ROD, CONNECTING	1

**FIG.6 CAMSHAFT ASSY. (E06)**

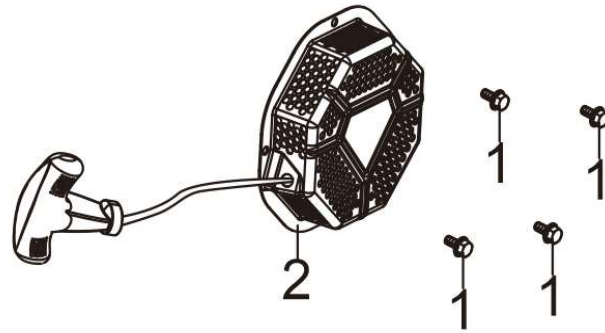
**图6:凸轮轴、气门组合 (E06)**



REF.NO. 序号	PART NO 物料代码	CHINESE 中文名	DESCRIPTION 英文名	Q'TY 数量
E06-1	14200-Z190620-00A9	凸轮轴部件	CAMSHAFT ASSY.	1
E06-4	12110-Z190110-00A9	气门组件	VALVES SET	1
E06-5	12103-Z080110-00A0	气门弹簧	SPRING, VALVE	2
E06-6	12107-Z080110-00A0	排气门弹簧座	RETAINER, EXHAUST VALVE	1
E06-7	12104-Z080110-00A0	气门调整帽	ROTATOR, VALVE	1
E06-8	12101-Z080110-00A0	挡油罩	GUIDE, SEAL	1
E06-9	12112-Z080110-00A0	气门弹簧座	SEAT, VALVE SPRING	1
E06-10	14081-Z080110-00A0	气门挺柱	TAPPET, VALVE	2
E06-11	14070-Z100110-00A0	气门挺杆组合	LIFTER SUBASSEMBLY, VALVE	2
E06-12	14090-Z080110-00A0	挺杆限位板组合	PLATE SUBASSEMBLY, LIFTER STOPPER	1
E06-13	14313-Z010110-00A0	摇臂轴螺栓	ROCKSHAFT BOLT	2
E06-14	14311-Z080110-00A0	气门摇臂	ROCKER, VALVE	2
E06-15	14314-Z010110-00A0	气门调节螺母	NUT, VALVE ADJUSTING	2
E06-16	14312-Z010110-00A0	气门锁紧螺母	NUT, VALVE LOCK	2
E06-17	12105-Z080110-00A0	气门弹簧座圈	RETAINER, VALVE SPRING	1

FIG.7 STARTER (E07)

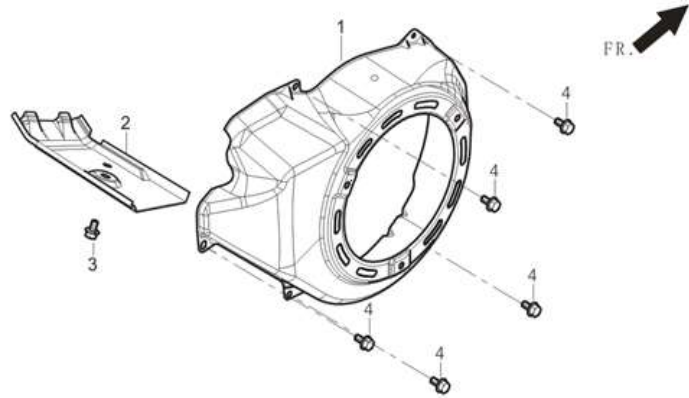
图7:起动机 (E07)



REF.NO. 序号	PART NO 物料代码	CHINESE 中文名	DESCRIPTION 英文名	Q'TY 数量
E07-12	90001-0608-01A0	六角法兰面螺栓-小系列	HEXAGON SOCKET FLANGE FACE BOLT - SMAL	4
E07-13	28200-Z190610-Y1A0	手起动机部件	STARTER ASSY, RECOIL	1

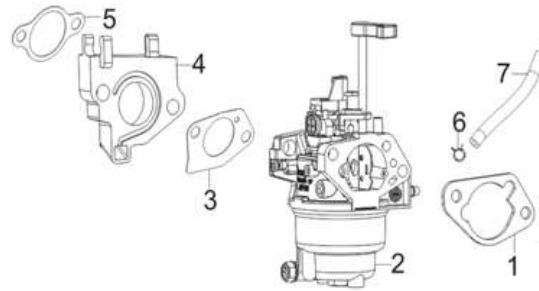
**FIG.8 SHROUD (E08)**

**图8:导流罩 (E08)**



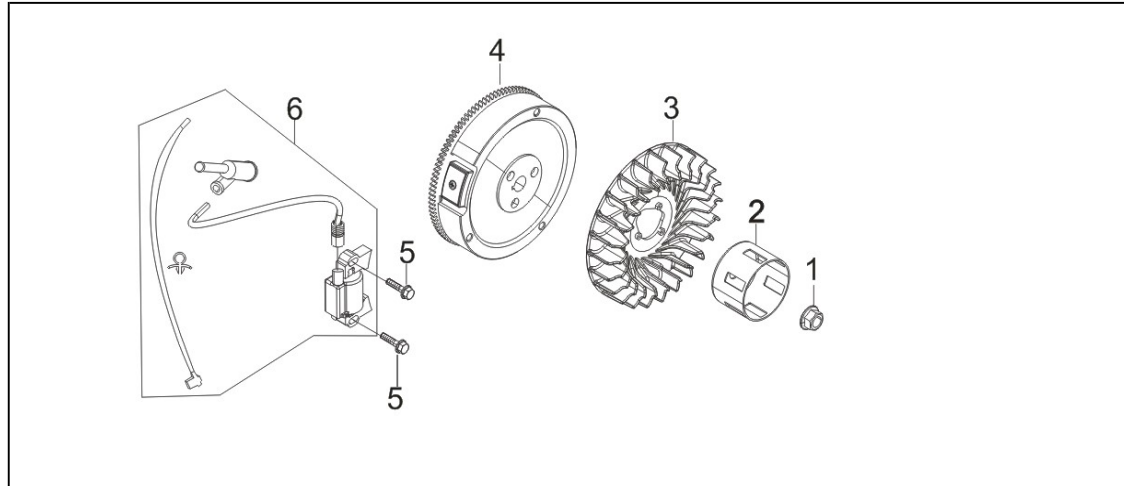
REF.NO. 序号	PART NO 物料代码	CHINESE 中文名	DESCRIPTION 英文名	Q'TY 数量
E08-1	28110-Z190510-Y1A0	导风罩	SHROUD	1
E08-2	19304-Z100210-00A0	缸体导风罩	SHROUD, CYLINDER BODY	1
E08-3	90001-0612-01A0	六角法兰面螺栓	BOLT	1
E08-4	90001-0612-01A0	六角法兰面螺栓	BOLT	5



**FIG.9 CARBURETOR ASSY.(E09)****图9:化油器 (E09)**

REF.NO. 序号	PART NO 物料代码	CHINESE 中文名	DESCRIPTION 英文名	Q'TY 数量
E09-1	17001-Z080110-00A0	空滤器密封垫	AIR CLEANER SEAL GASKET	1
E09-2	16100-Z191310-00M0	化油器部件	CARBURETOR ASSY.	1
E09-3	16001-Z100110-00A0	化油器密封垫	CARBURETOR SEAL GASKET	1
E09-4	16003-Z100110-00A0	化油器隔热板	PLATE, CARBURETOR INSULATOR	1
E09-5	17002-Z100110-00A0	进气口密封垫	GASKET, INLET	1
E09-6	90740-Z010510-00A0	卡箍	COLLAR	1
E09-7	90686-Z190810-00A0	油管	TUBE, FUEL	1

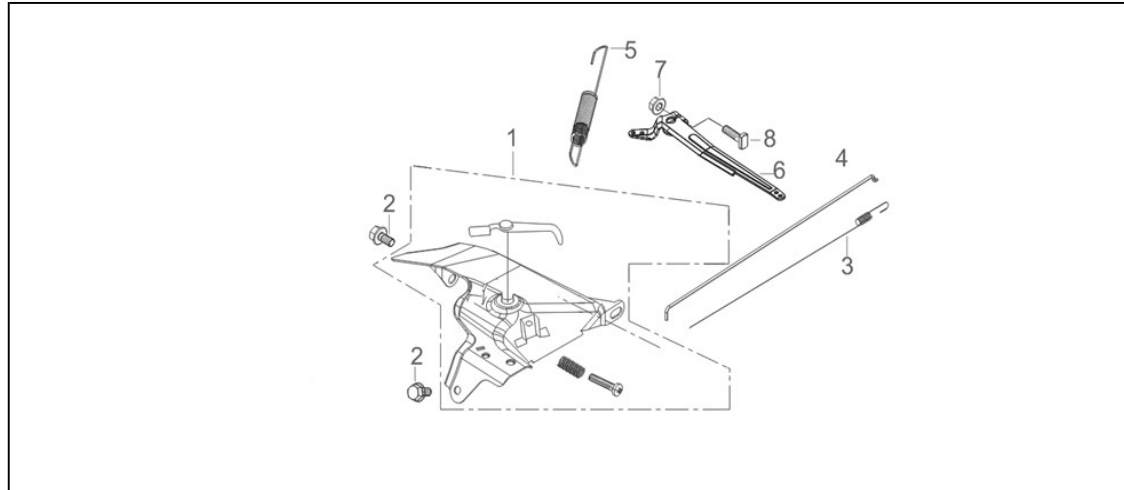
**FIG.10 FLYWHEEL SUBASSEMBLY (E10)****图10: 飞轮组合 (E10)**



REF.NO. 序号	PART NO 物料代码	CHINESE 中文名	DESCRIPTION 英文名	Q'TY 数量
E10-1	13501-Z080111-00A0	飞轮螺母	NUT, FLYWHEEL	1
E10-2	28002-Z100210-00A0	起动杯	PULLEY,STARTER	1
E10-3	19352-Z100210-00A0	叶轮	IMPELLER	1
E10-4	13510-Z190120-00A0	飞轮组合	FLYWHEEL SUBASSEMBLY	1
E10-5	90001-0628-01A0	六角法兰面螺栓-小系列	HEXAGON SOCKET FLANGE FACE BOLT - SMAL	2
E10-6	30400-Z310311-00A0	点火线圈	COIL, IGNITION	1

**FIG.11 CONTORL ASSY.(E11)**

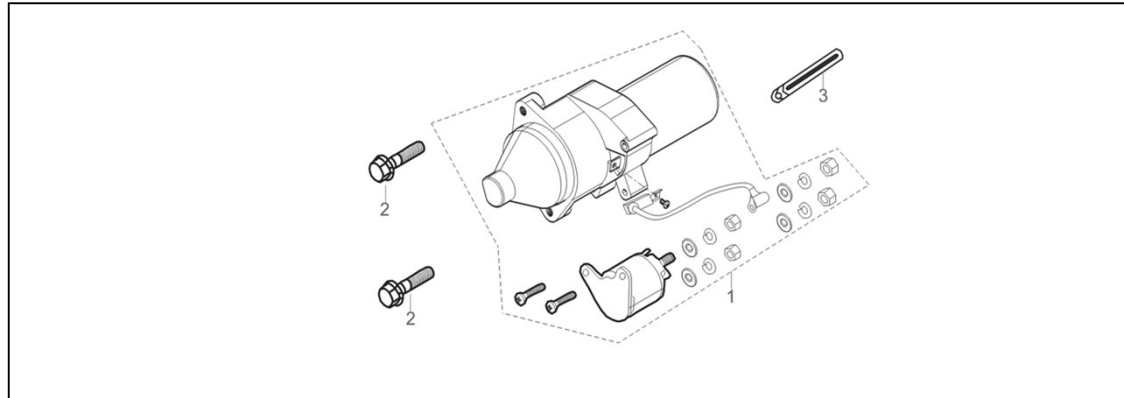
**图11:调速器 (E11)**



REF.NO. 序号	PART NO 物料代码	CHINESE 中文名	DESCRIPTION 英文名	Q'TY 数量
E11-1	16520-Z6L0110-00A0	油门操纵组合	CONTROL ASSY, THROTTLE	1
E11-2	90001-0612-01A0	六角法兰面螺栓-小系列	HEXAGON SOCKET FLANGE FACE BOLT - SMAL	2
E11-3	16012-Z080110-00A0	节气门复位弹簧	SPRING, THROTTLE VALVE RETURNING	1
E11-4	16062-Z100110-00A0	调速拉杆	ROD, GOVERNEOR	1
E11-5	16063-Z100310-00A0	调速弹簧	SPRING, GOVERNOR	1
E11-6	16070-Z100120-00A0	调速支架组合	GOVERNOR BRACKET SUBASSEMBLY	1
E11-7	90305-0600-31A0	六角法兰面螺母	HEXAGON NUT WITH FLANGE	1
E11-8	16072-Z010410-01A0	调速支架固定螺栓	BOLT, GOVERNOR SUPPORT	1

**FIG.12 MOTOR ASSY,STARTING.(E12)**

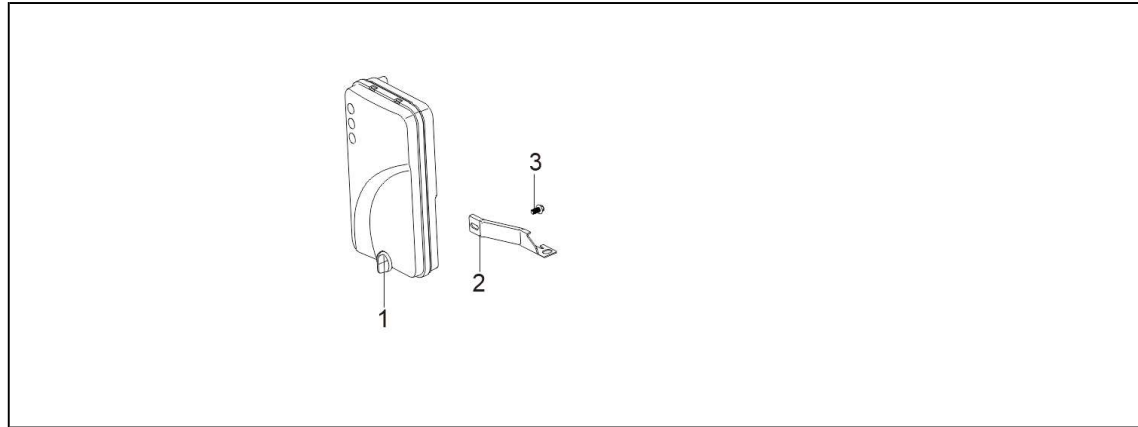
**图 12： 起动电机部件(E12)**



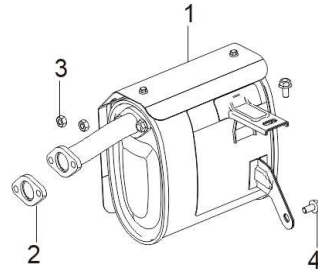
REF.NO. 序号	PART NO 物料代码	CHINESE 中文名	DESCRIPTION 英文名	Q'TY 数量
E12-1	09100-Z170410-00A0	起动电机组件	MOTOR, STARTING	1
E12-2	90001-0835-01A0	六角法兰面螺栓-小系列	HEXAGON SOCKET FLANGE FACE BOLT - SMAL	2

**FIG.13 AIR CLEANER (F01)**

**图13:空滤器 (F01)**



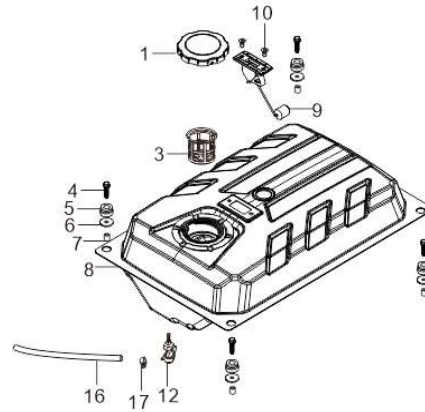
REF.NO. 序号	PART NO 物料代码	CHINESE 中文名	DESCRIPTION 英文名	Q'TY 数量
F01-1	17100-Z310710-00A0	空滤器	AIR CLEANER	1
F01-2	17003-Y290110-00A0	空滤器支架	SUPPORT, ATR CLEANER	1
F01-3	90001-0612-01A0	六角法兰面螺栓-小系列	HEXAGON SOCKET FLANGE FACE BOLT - SMAL	1

**FIG.14 MUFFLER ASSY.(F02)****图14:消声器 (F02)**

REF.NO. 序号	PART NO 物料代码	CHINESE 中文名	DESCRIPTION 英文名	Q'TY 数量
F02-1	18100-W170410-00A0	消声器部件	MUFFLER ASSY.	1
F02-2	18001-Z190110-00A0	排气口密封垫	GASKET, EXHAUST OUTLET	1
F02-3	90303-0800-31A0	1型六角螺母	TYPE 1 HEXAGON NUT	2
F02-4	90001-0816-01A0	六角法兰面螺栓-小系列	HEXAGON SOCKET FLANGE FACE BOLT - SMAL	2

**FIG.15 TANK, FUEL (F03)**

**图15: 油箱 (F03)**



REF.NO. 序号	PART NO 物料代码	CHINESE 中文名	DESCRIPTION 英文名	Q'TY 数量
F03-1	16730-YN60410-00A0	油箱盖	COVER, FUEL TANK	1
F03-3	16652-Y020120-00A0	燃油滤网	STRAINER, FUEL	1
F03-4	90007-0625-A1A0	六角法兰面螺栓-小系列	HEXAGON SOCKET FLANGE FACE BOLT - SMAL	4
F03-5	16601-Y020120-00A0	油箱支撑胶套	SLEEVE, FUEL TANK RUBBER	4
F03-6	90408-Y020310-00A0	平垫圈-A级	FLAT WASHER - GRADE A	4
F03-7	90683-Y020110-00A0	衬套	BUSH	4
F03-8	16620-YGW0110-Y1A0	油箱	FUEL TANK	1
F03-9	37200-Y1J0110-H7A1	油标部件	LEVELER ASSY, OIL	1
F03-10	90104-0512-51A0	十字槽沉头螺钉(4.8级)	CROSS RECESSED COUNTERSUNK HEAD SCREW	2
F03-12	16750-Y020211-00A0	油开关组合	COCK ASSY, FUEL	1
F03-16	30431-Y030110-00A0	橡胶护套	JACKET, RUBBER	1
F03-17	90740-Z010210-00A0	卡箍	COLLAR	1