

CS-310ES_35

Serial Number

24000001-99999999

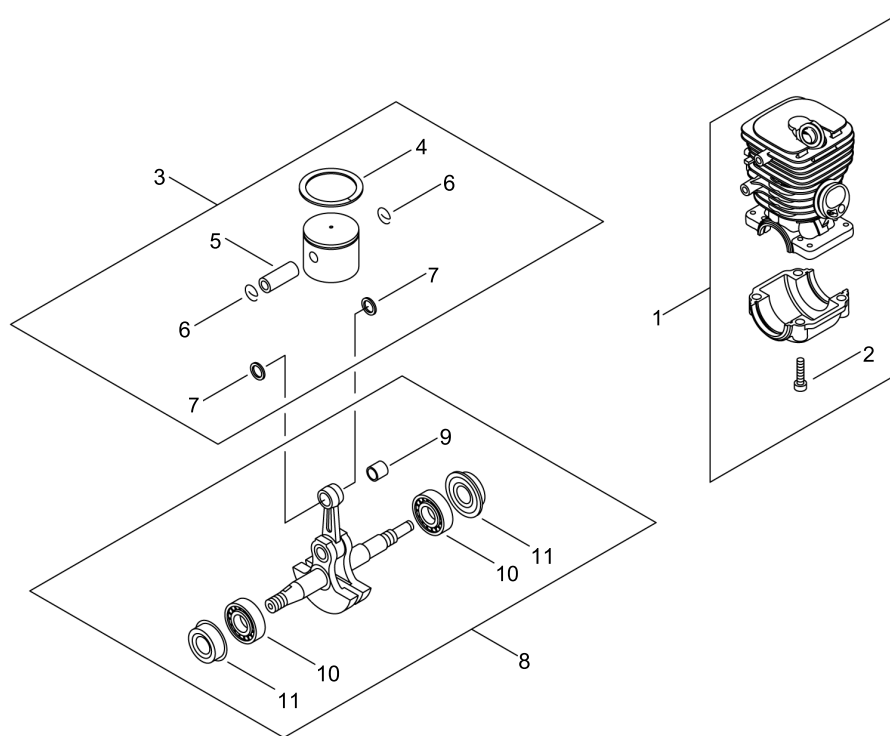
Last updated date

08/Jan/2023

TABLE OF CONTENTS

CYLINDER, PISTON, CRANKSHAFT	1
ENGINE COVER.....	3
MAGNETO.....	5
AIR CLEANER, CARBURETOR.....	7
CARBURETOR.....	9
MUFFLER.....	11
RECOIL STARTER.....	13
HANDLE.....	15
CHAIN BRAKE.....	17
ACCESSORIES	19

CYLINDER, PISTON, CRANKSHAFT



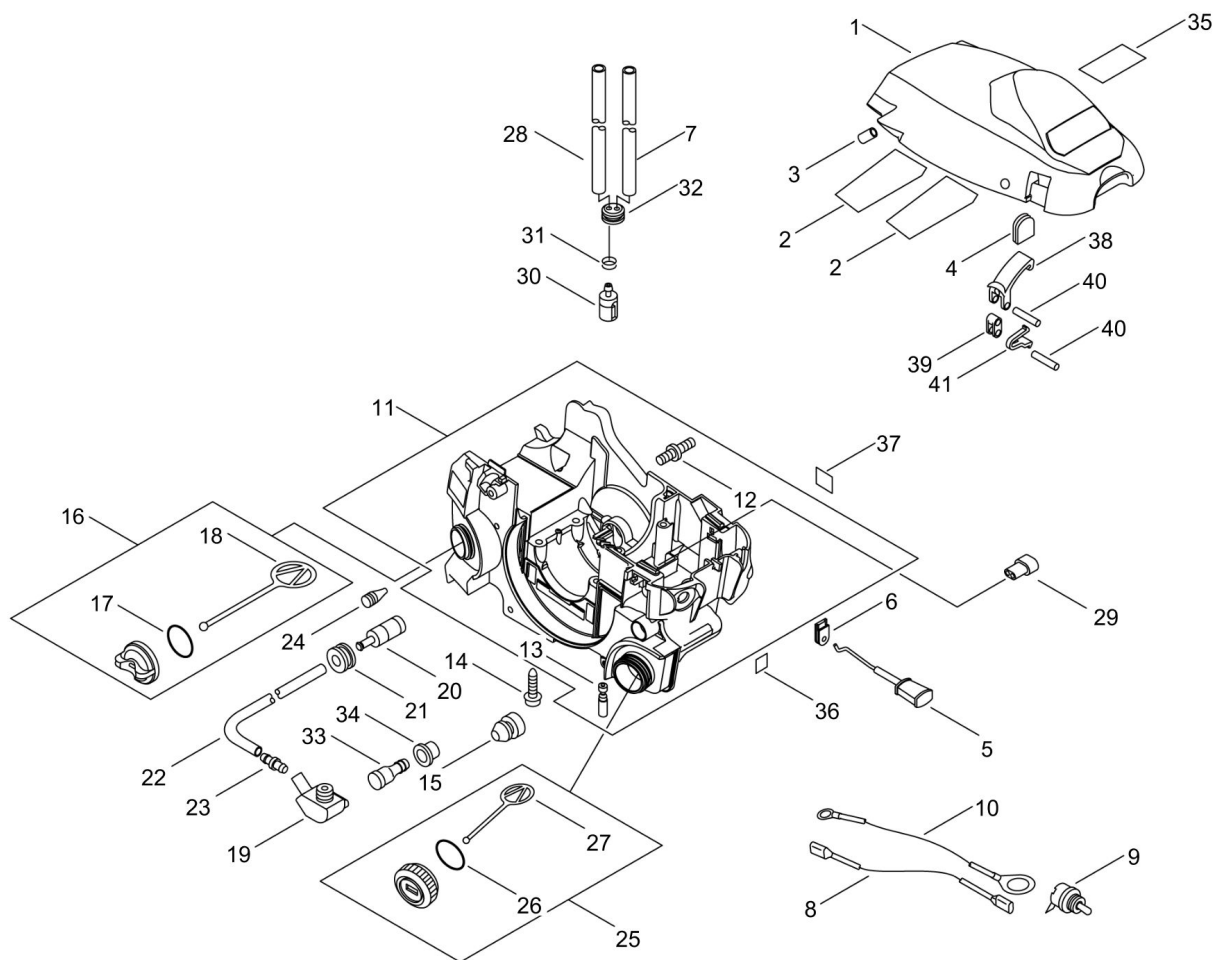
CYLINDER, PISTON, CRANKSHAFT

Key No.	LV (+)	Parts Number	Parts Description	Qty	Standard	Class
1		P021-015050	CRANK CASE KIT	1		
2	+	V805-000220	BOLT, TORX 5	4	TB-5*25 12.9	C
3		P021-015061	PISTON KIT	1		
4	+	100011-16131	RING, PISTON	1		B
5	+	100013-15330	PIN, PISTON	1	5.5*8*29	D
6	+	100015-04630	CIRCLIP, PISTON PIN	2		C
7	+	100014-11520	SPACER, PISTON PIN	2		C
8		P021-015072	CRANKSHAFT,ASSY	1		D
9	+	V553-000060	BEARING,NEEDLE 8	1	HK0810FMV4	B
10	+	94035-36201	BEARING BALL	2	6201X3JR2C3	
11	+	V505-000011	SEAL,OIL 12	2	12*32*5.5	C

Class : Consumable class

A:Fast moving parts B:Semi-fast moving parts C:Slow moving parts D:Order only as needed

ENGINE COVER



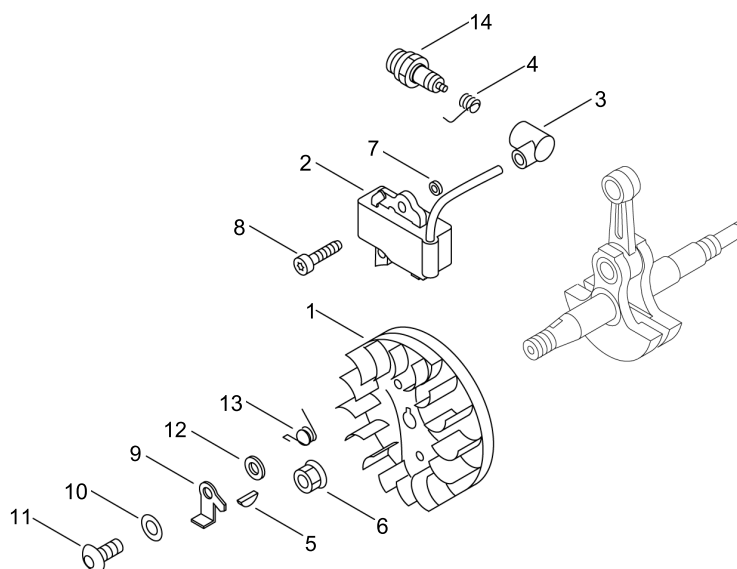
ENGINE COVER

Key No.	LV (+)	Parts Number	Parts Description	Qty	Standard	Class
1		A160-001070	COVER,CYLINDER	1		C
2		V341-000120	WASHER,SQUARE	2		C
3		100927-35830	PIPE	1	3*7*10	C
4		130338-32430	PLUG, COVER	1		B
5		A241-000150	KNOB, CHOKE	1		C
6		V130-000010	GROMMET,CHOKE	1		C
7		V471-001560	PIPE	1	2.4*5*80	C
8		V485-001080	LEAD	1	L235,#187,#250	C
9		A440-001190	SWITCH, ON OFF	1		C
10		V485-001070	LEAD	1	#LA105 L255	C
11		P021-036938	COVER, ENGINE	1		
12	+	V225-000370	BOLT,STUD 8	2	M8	C
13	+	C022-000072	AUTO-OILER ASSEMBLY	1		C
14		V805-000180	BOLT, TORX 5	4	TB-5*30 12.9	C
15		V420-001790	CUSHION	2		B
16		P021-005581	CAP ASY	1	BLACK	C
17	+	900720-00018	O-RING	1	P-18	
18	+	A365-000050	CONNECTOR,CAP	1		B
19		V470-000810	PIPE	1		C
20		436205-02832	STRAINER, OIL	1		
21		132115-01461	GROMMET	1		C
22		130110-05260	PIPE, IMPULSE	1		C
23		V186-000510	JOINT,PIPE	1		C
24		436114-13930	VALVE, CHECK	1		B
25		P021-037920	FUEL CAP ASY	1		C
26	+	V581-000610	RING,O	1	P22	A
27	+	A365-000050	CONNECTOR,CAP	1		B
28		V471-002170	PIPE	1	3*5*230	C
29		V131-000210	GROMMET,NEEDLE	1		C
30		131205-14931	STRAINER,FUEL	1		A
31		V490-001240	CLIP	1		C
32		132115-44330	GROMMET	1		C
33		A356-000031	VALVE,CHECK	1		B
34		V137-000000	GROMMET,FUEL	1		C
35		X503-009270	LABEL,MODEL	1	CS-310ES	D
36		890157-39131	LABEL, SWITCH	1		D
37		X524-001901	LABEL	1		D
38		C463-000030	KNOB, LATCH	2		C
39		J485-000200	HINGE	2		D
40		V622-000070	PIN,STRAIGHT 4	4	F4*17.8	C
41		V490-000400	CLIP	2		C

Class : Consumable class

A:Fast moving parts B:Semi-fast moving parts C:Slow moving parts D:Order only as needed

MAGNETO



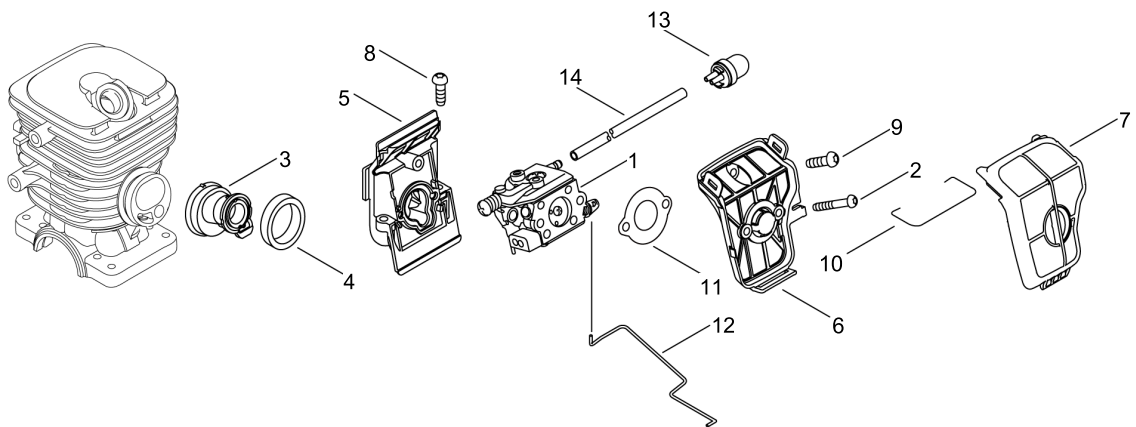
MAGNETO

Key No.	LV (+)	Parts Number	Parts Description	Qty	Standard	Class
1		A409-000350	ROTOR, MAGNETO	1	WALBRO FW57	C
2		A411-000460	COIL, IGNITION	1	WALBRO MBU-35A	C
3		A427-000020	CAP, SPARK PLUG	1		C
4		A426-000020	TERMINAL, SPARKPLUG	1		C
5		100142-12330	KEY, WOODRUFF	1		C
6		900515-00008	NUT, FLANGE 8	1	8	
7		150117-16430	SPACER	2		C
8		V805-000210	BOLT, TORX 5	2	TB-5*20 12.9	C
9		A514-000020	PAWL	2		C
10		900603-00005	WASHER 5	2	5.5*12*0.8	
11		V203-000080	BOLT, 5	2	5*14	C
12		177247-04630	SPACER, RATCHET	2	5.2*8*2.1	C
13		177234-35430	SPRING, RETURN	2		B
14		A425-000000	SPARKPLUG	1	BPMR8Y	A

Class : Consumable class

A:Fast moving parts B:Semi-fast moving parts C:Slow moving parts D:Order only as needed

AIR CLEANER, CARBURETOR



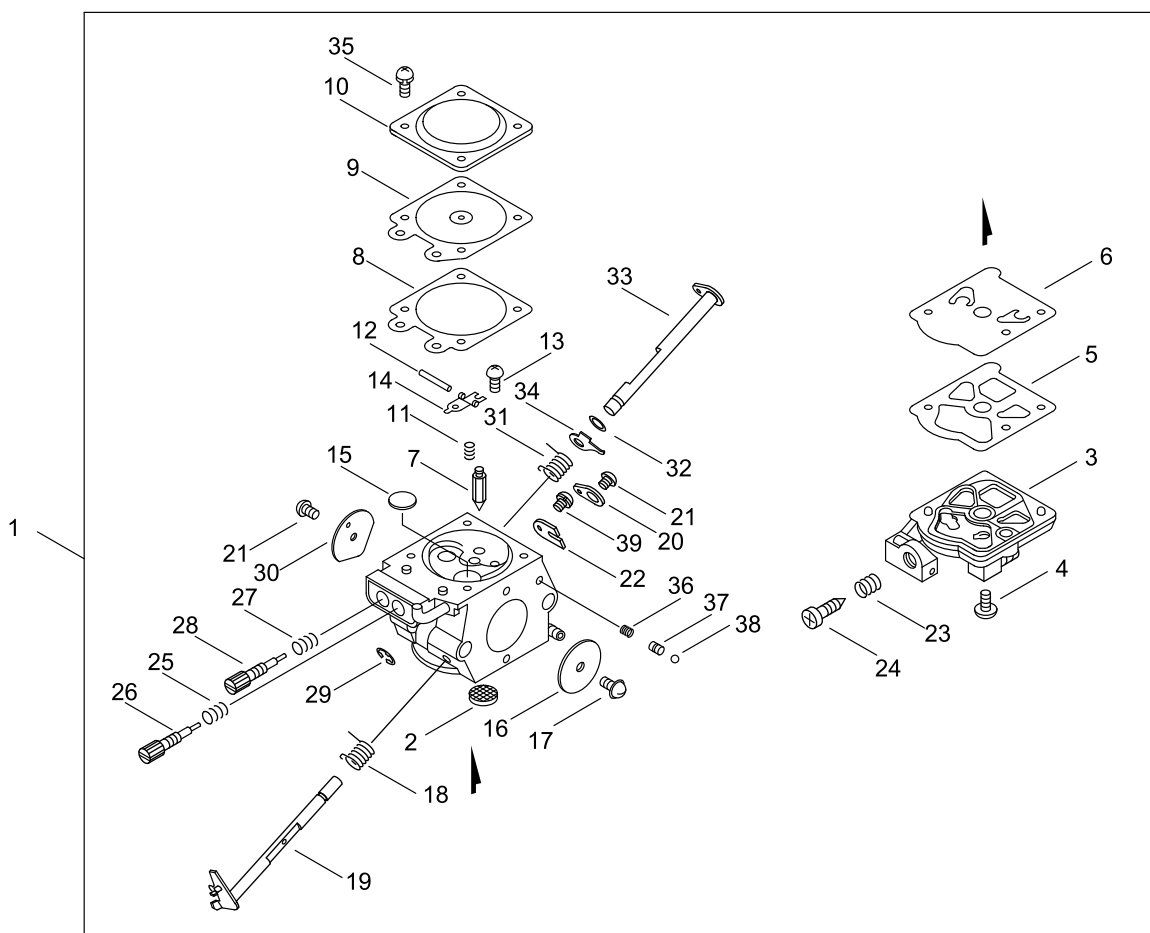
AIR CLEANER, CARBURETOR

Key No.	LV (+)	Parts Number	Parts Description	Qty	Standard	Class
1		A021-001852	CARBURETOR,DIAPHRAGM	1	WT-961 •	B
2		V805-000040	BOLT, TORX 5	2	TT-5*55 DG 10.9	C
3		A202-000071	BELLOWS, INTAKE	1		C
4		A206-000000	HOLDER, BELLOWS	1		C
5		A200-000353	INSULATOR, INTAKE	1		C
6		A225-000350	CASE,CLEANER	1		C
7		A226-000460	ELEMENT,AIR FILTER	1		A
8		V805-000010	BOLT, TORX 5	2	TT-5*20 DG 10.9	C
9		V805-000000	BOLT, TORX 5	1	TT-5*16 DG 10.9	C
10		V582-000050	RING,SNAP	1	D2	C
11		V103-000500	GASKET,INTAKE	1	ASK NO.4600	A
12		C454-000160	ROD, THROTTLE	1		C
13		123181-39130	PUMP, PRIMER	1		A
14		V471-002190	PIPE	1	2.4*5*125	C

Class : Consumable class

A:Fast moving parts B:Semi-fast moving parts C:Slow moving parts D:Order only as needed

CARBURETOR



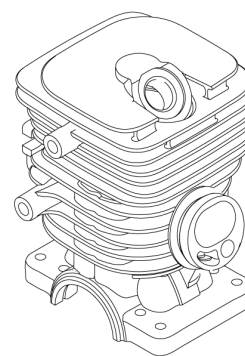
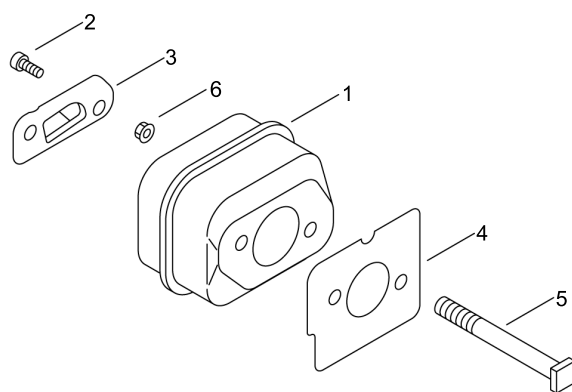
CARBURETOR

Key No.	LV (+)	Parts Number	Parts Description	Qty	Standard	Class
1		A021-001852	CARBURETOR,DIAPHRAGM	1	WT-961 •	B
2	+	123126-10631	SCREEN, INLET	1		B
3	+	123124-09520	COVER, FUEL PUMP	1		D
4	+	123110-03930	SCREW, PUMP COVER	1		D
5	+	123125-15030	GASKET, FUEL PUMP	1		A
6	+	123112-15030	DIAPHRAGM, FUEL PUMP	1		A
7	+	123137-19830	VALVE, INLET NEEDLE	1		D
8	+	123140-03930	GASKET, M. DIAPHRAGM	1		A
9	+	P003-001850	DIAPHRAGM, METERING	1		A
10	+	123142-03930	COVER, M. DIAPHRAGM	1		D
11	+	123122-03660	SPRING, METER. LEVER	1		D
12	+	123138-03930	PIN, METERING LEVER	1		D
13	+	123139-03930	SCREW, M. LEVER PIN	1		D
14	+	123123-03930	LEVER, METERING	1		D
15	+	123146-10631	PLUG, WELCH	1		C
16	+	123116-05960	VALVE, THROTTLE	1		D
17	+	P003-002380	SCREW	1		D
18	+	123113-37530	SPRING, THROTTLE RTN	1		B
19	+	P003-002240	SHAFT ASY,THROTTLE	1		C
20	+	P003-001040	LEVER THROTTLE	1		D
21	+	123114-38830	SCREW	2		D
22	+	123127-03930	CLIP, THROTTLE SHAFT	1		C
23	+	123133-04260	SPRING, IDLE ADJUST	1		D
24	+	123134-04260	SCREW, IDLE ADJUST	1		D
25	+	123121-22130	SPRING, NEEDLE	1		D
26	+	123118-30330	NEEDLE, IDLE	1		D
27	+	123119-22130	SPRING, NEEDLE	1		D
28	+	P003-001340	NEEDLE POWER	1		D
29	+	123127-15030	RING	1		D
30	+	P003-002250	VALVE, CHOKE	1		D
31	+	P003-002260	SPRING	1		D
32	+	123149-26030	WASHER	1		D
33	+	P003-000150	CHOKE, SHAFT	1		
34	+	P003-001510	LEVER-FAST IDLE	1		D
35	+	123130-02960	SCREW	4		D
36	+	123186-09660	SPRING, START VALVE	1		D
37	+	123185-09660	PISTON ASSY	1		D
38	+	123136-09660	BALL	1		D
39	+	P003-005120	SCREW	1		D

Class : Consumable class

A:Fast moving parts B:Semi-fast moving parts C:Slow moving parts D:Order only as needed

MUFFLER



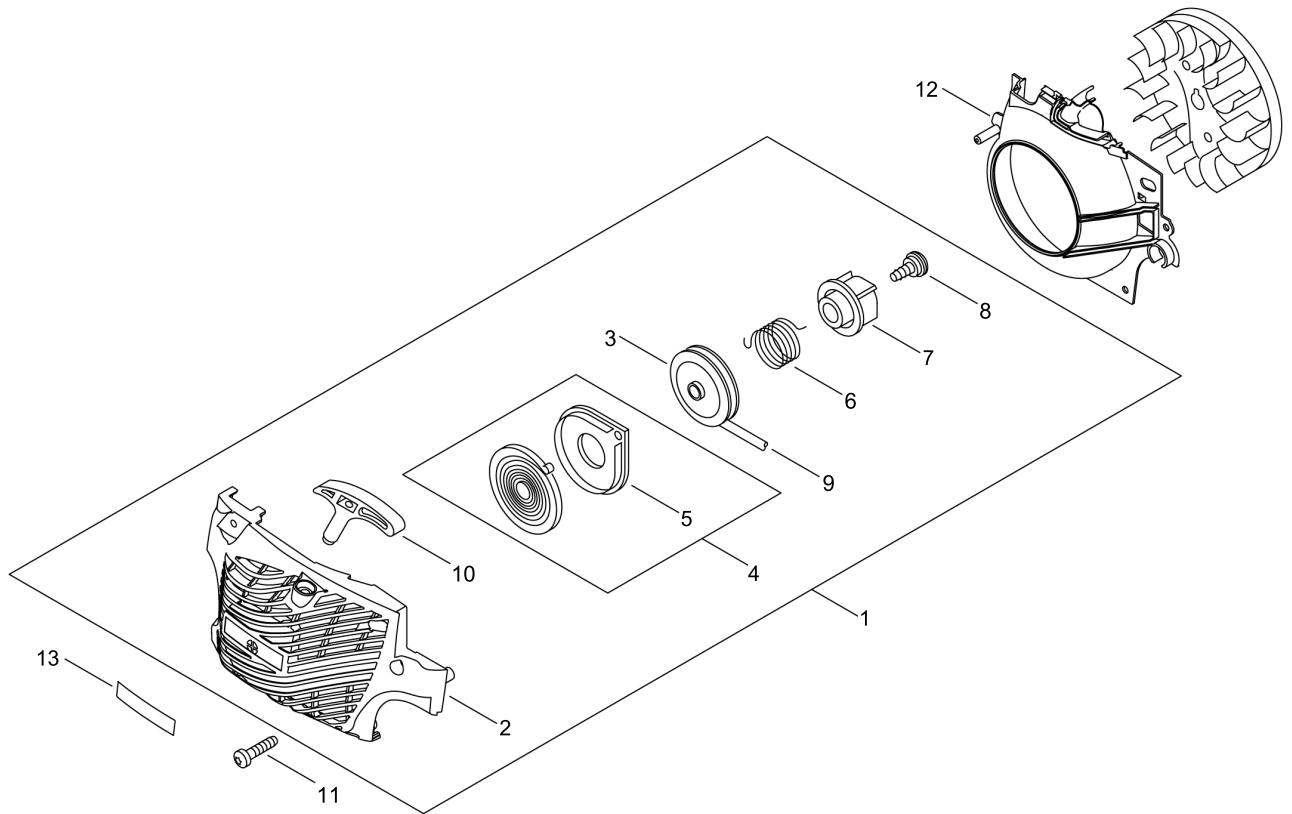
MUFFLER

Key No.	LV (+)	Parts Number	Parts Description	Qty	Standard	Class
1		A300-000802	MUFFLER, EXHAUST	1		C
2		V804-000030	BOLT, TORX 4	2	TB-4*8 10.9	C
3		A313-001002	GUIDE, EXHAUST	1		C
4		V104-000732	GASKET,EXHAUST	1		A
5		V203-000120	BOLT,5	2	L=60	C
6		900516-00005	NUT, FRANGE 5	2	5	

Class : Consumable class

A:Fast moving parts B:Semi-fast moving parts C:Slow moving parts D:Order only as needed

RECOIL STARTER



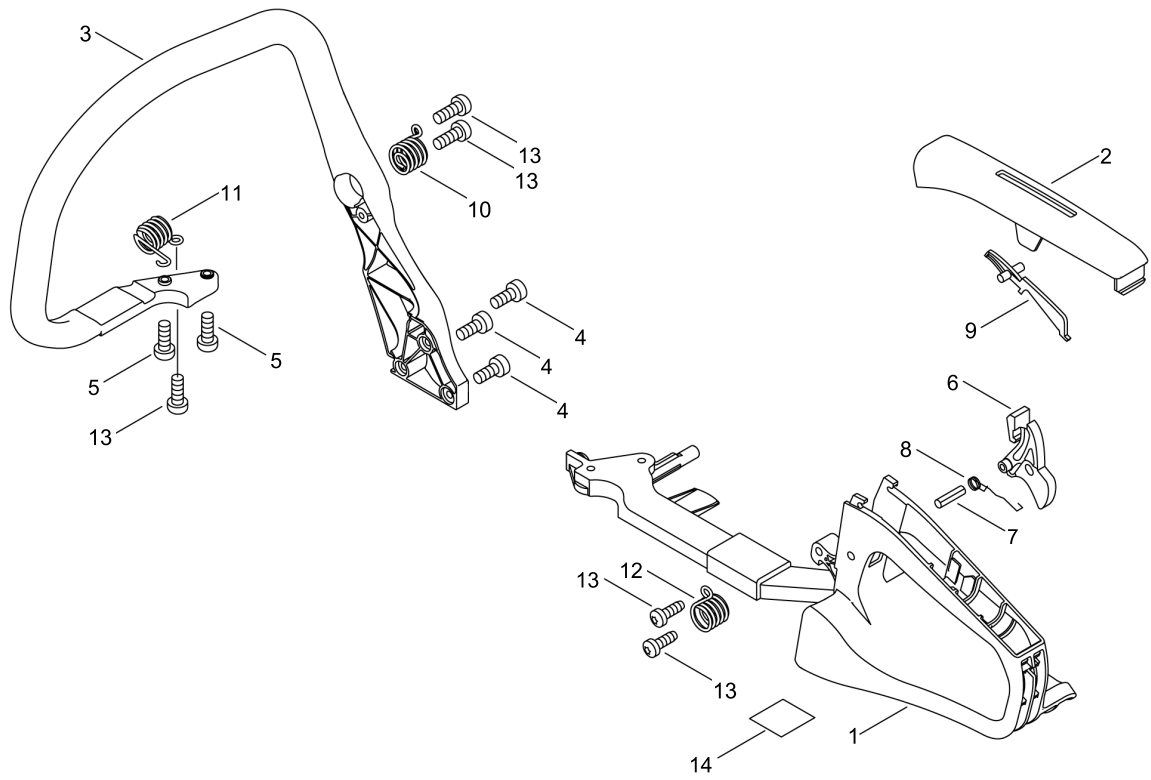
RECOIL STARTER

Key No.	LV (+)	Parts Number	Parts Description	Qty	Standard	Class
1		A051-001302	STARTER,RECOIL ASY	1		B
2	+	P022-039170	STARTER CASE	1		
3	+	A506-000460	REEL,ROPE	1		C
4	+	P022-001330	SPRING KIT, REWIND	1		B
5	++	P022-033280	SPRING CASE	1		C
6	+	V452-001320	SPRING,TORSION	1		B
7	+	A507-000110	CATCHER,PAWL	1		C
8	+	177236-61830	SCREW	1		C
9	+	P022-008440	ROPE, STARTER	1	3.5*900	B
10	+	P022-005891	GRIP, STARTER	1		C
11		V805-000010	BOLT, TORX 5	4	TT-5*20 DG 10.9	C
12		A172-000830	COVER,FAN	1		C
13		X502-000340	LABEL,ECHO	1	ECHO(WHITE)	D

Class : Consumable class

A:Fast moving parts B:Semi-fast moving parts C:Slow moving parts D:Order only as needed

HANDLE



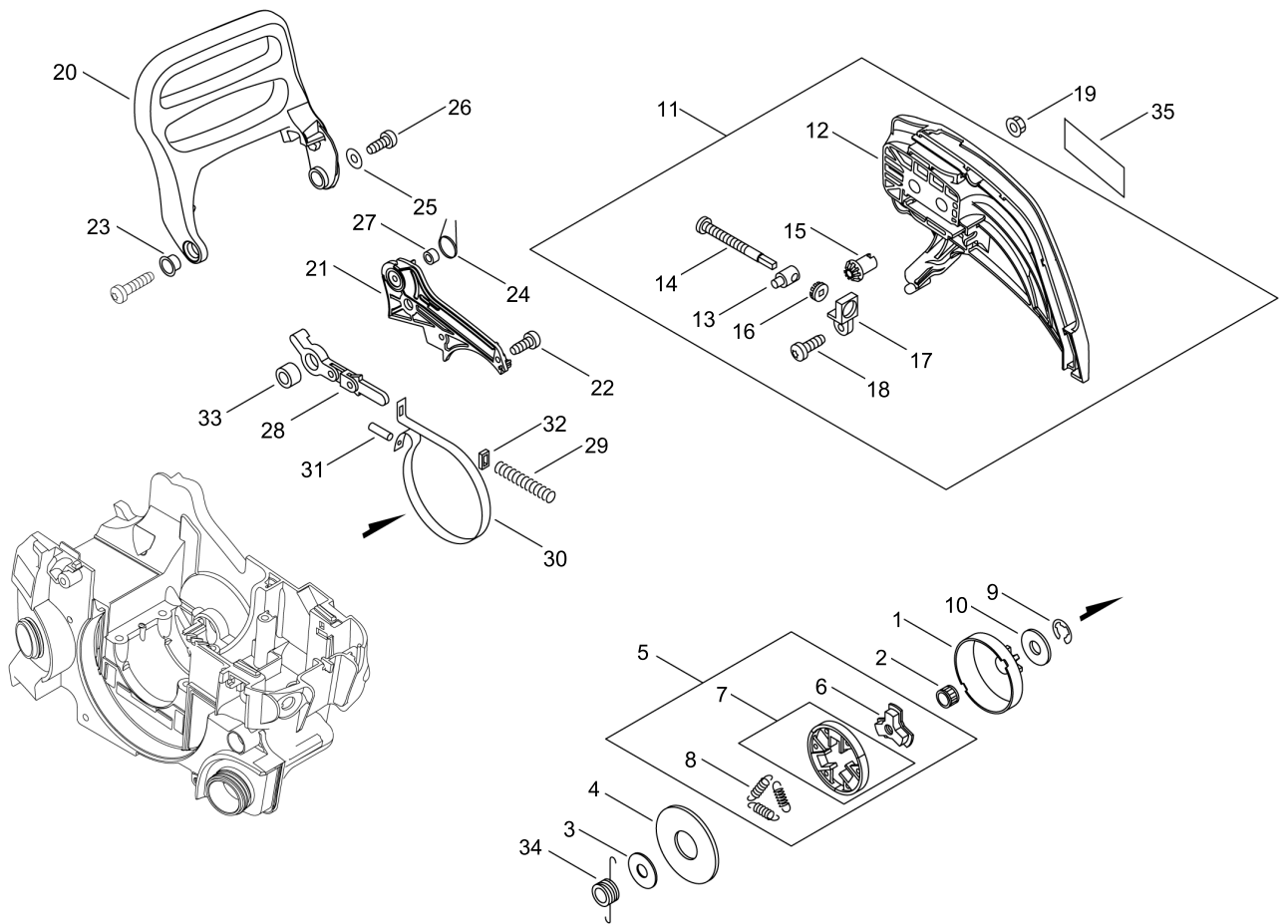
HANDLE

Key No.	LV (+)	Parts Number	Parts Description	Qty	Standard	Class
1		C410-000450	HANDLE, REAR	1		C
2		C411-000041	LID,HANDLE	1		C
3		C400-000541	HANDLE, FRONT	1		C
4		V805-000010	BOLT, TORX 5	3	TT-5*20 DG 10.9	C
5		V805-000000	BOLT, TORX 5	2	TT-5*16 DG 10.9	C
6		C450-000213	CONTROL, THROTTLE	1		C
7		900345-40025	PIN, SPRING 4*25SUS	1	4*25SUS	
8		V452-000260	SPRING,TORSION	1		B
9		C460-000072	LOCKOUT, THROTTLE	1		C
10		V450-000700	SPRING,COMPRESSION	1		B
11		V450-000710	SPRING,COMPRESSION	1		B
12		V450-000720	SPRING,COMPRESSION	1		B
13		V805-000000	BOLT, TORX 5	5	TT-5*16 DG 10.9	C
14		890345-39231	LABEL,CAUTION	1		D

Class : Consumable class

A:Fast moving parts B:Semi-fast moving parts C:Slow moving parts D:Order only as needed

CHAIN BRAKE



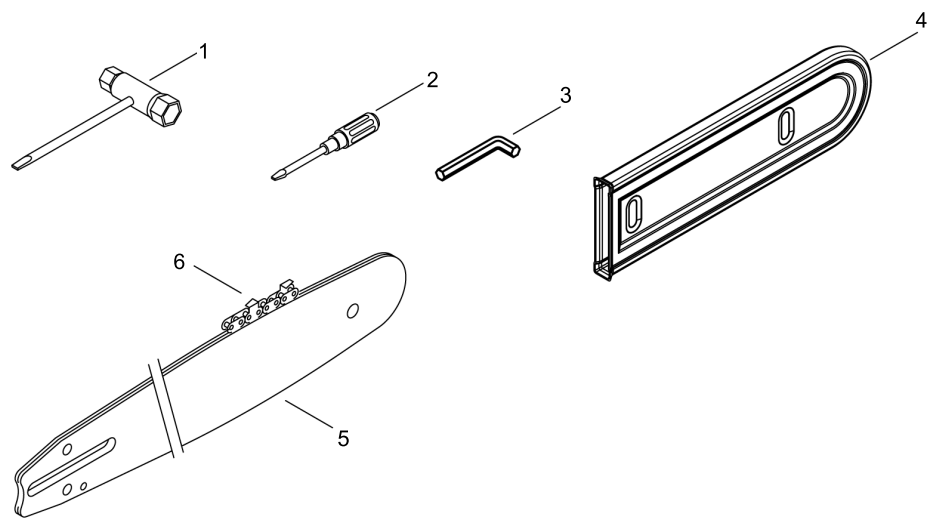
CHAIN BRAKE

Key No.	LV (+)	Parts Number	Parts Description	Qty	Standard	Class
1		A556-000543	DRUM, CLUTCH	1		B
2		175012-03930	BEARING, NEEDLE	1		B
3		A551-000080	PLATE, CLUTCH	1		C
4		A551-000140	PLATE, CLUTCH	1		C
5		A056-000210	CLUTCH ASY	1		B
6	+	A552-000100	HUB, CLUTCH	1		B
7	+	P021-005810	CLUTCH SHOE SET	1		B
8	+	V451-000470	SPRING,TENSION	3		B
9		V583-000120	RING	1		C
10		100143-19830	WASHER	1	8.2*31*0.8	C
11		P021-015112	GUARD,SPROCKET KIT	1		C
12	+	C300-000402	GUARD, SPROCKET	1		C
13	+	C309-000030	TENSIONER,CHAIN	1		C
14	+	V203-000110	BOLT,5	1		C
15	+	V651-000001	GEAR,BEVEL	1		D
16	+	V651-000011	GEAR,BEVEL	1		D
17	+	V355-000140	COLLAR,8	1		C
18	+	V804-000000	BOLT, TORX 4	1	TT-4*12 DG 10.9	C
19		V265-000200	NUT	2	M-8	C
20		C320-000173	LEVER, BRAKE	1		C
21		C345-000271	COVER,BRAKE	1		C
22		V804-000000	BOLT, TORX 4	3	TT-4*12 DG 10.9	C
23		V356-000430	COLLAR,10	1		C
24		V452-000250	SPRING,TORSION	1		B
25		177214-03930	WASHER	1		C
26		V804-000020	BOLT, TORX 4	1	TT-4*20 DG 10.9	C
27		433116-35430	SPACER 8	1	8*12*9	C
28		C334-000100	CONNECTOR, BRAKE	1		C
29		V450-000070	SPRING,COMPRESSION	1		B
30		C328-000030	BAND,BRAKE	1		C
31		93050-30098	ROLLER	1	F3*9.8	C
32		V376-000450	SPACER	1		C
33		433116-35430	SPACER 8	1	8*12*9	C
34		V652-000040	GEAR,WORM	1		B
35		X502-000670	LABEL,ECHO	1		D

Class : Consumable class

A:Fast moving parts B:Semi-fast moving parts C:Slow moving parts D:Order only as needed

ACCESSORIES



ACCESSORIES

Key No.	LV (+)	Parts Number	Parts Description	Qty	Standard	Class
1		X602-000080	TOOL,WRENCH	1	13*19 L180	D
2		895812-03930	DRIVER, SCREW 50	1		D
3		X605-000170	TOOL,L WRENCH	1		D
4		X490-000510	SCABBARD,CHAIN	1		D
5		X123-000132	BAR,GUIDE 35	1	35RC50M-3/8 ECHO	A
6		X223-000080	CHAIN,SAW	1	91VXL-53E	A

Class : Consumable class

A:Fast moving parts B:Semi-fast moving parts C:Slow moving parts D:Order only as needed

NUMERICAL PARTS INDEX

Part No	Part description	Page	Part No	Part description	Page	Part No	Part description	Page
100011-16131	RING, PISTON	2	177234-35430	SPRING, RETURN	6	A556-000543	DRUM, CLUTCH	18
100013-15330	PIN, PISTON	2	177236-61830	SCREW	14	C022-000072	AUTO-OILER ASSEMBLY	4
100014-11520	SPACER, PISTON PIN	2	177247-04630	SPACER, RATCHET	6	C300-000402	GUARD, SPROCKET	18
100015-04630	CIRCLIP, PISTON PIN	2	433116-35430	SPACER 8	18	C309-000030	TENSIONER,CHAIN	18
100142-12330	KEY, WOODRUFF	6	436114-13930	VALVE, CHECK	4	C320-000173	LEVER, BRAKE	18
100143-19830	WASHER	18	436205-02832	STRAINER, OIL	4	C328-000030	BAND, BRAKE	18
100927-35830	PIPE	4	890157-39131	LABEL, SWITCH	4	C334-000100	CONNECTOR, BRAKE	18
123110-03930	SCREW, PUMP COVER	10	890345-39231	LABEL, CAUTION	16	C345-000271	COVER, BRAKE	18
123112-15030	DIAPHRAGM, FUEL PUMP	10	895812-03930	DRIVER, SCREW 50	20	C400-000541	HANDLE, FRONT	16
123113-37530	SPRING, THROTTLE RTN	10	900345-40025	PIN, SPRING 4*25SUS	16	C410-000450	HANDLE, REAR	16
123114-38830	SCREW	10	900515-00008	NUT, FLANGE 8	6	C411-000041	LID, HANDLE	16
123116-05960	VALVE, THROTTLE	10	900516-00005	NUT, FRANGE 5	12	C450-000213	CONTROL, THROTTLE	16
123118-30330	NEEDLE, IDLE	10	900603-00005	WASHER 5	6	C454-000160	ROD, THROTTLE	8
123119-22130	SPRING, NEEDLE	10	900720-00018	O-RING	4	C460-000072	LOCKOUT, THROTTLE	16
123121-22130	SPRING, NEEDLE	10	93050-30098	ROLLER	18	C463-000030	KNOB, LATCH	4
123122-03660	SPRING, METER. LEVER	10	94035-36201	BEARING BALL	2	J485-000200	HINGE	4
123123-03930	LEVER, METERING	10	A021-001852	CARBURETOR, DIAPHRAGM	8	P003-000150	CHOKE, SHAFT	10
123124-09520	COVER, FUEL PUMP	10	A021-001852	CARBURETOR, DIAPHRAGM	10	P003-001040	LEVER THROTTLE	10
123125-15030	GASKET, FUEL PUMP	10	A051-001302	STARTER, RECOIL ASY	14	P003-001340	NEEDLE POWER	10
123126-10631	SCREEN, INLET	10	A056-000210	CLUTCH ASY	18	P003-001510	LEVER-FAST IDLE	10
123127-03930	CLIP, THROTTLE SHAFT	10	A160-001070	COVER, CYLINDER	4	P003-001850	DIAPHRAGM, METERING	10
123127-15030	RING	10	A172-000830	COVER, FAN	14	P003-002240	SHAFT ASY, THROTTLE	10
123130-02960	SCREW	10	A200-000353	INSULATOR, INTAKE	8	P003-002250	VALVE, CHOKE	10
123133-04260	SPRING, IDLE ADJUST	10	A202-000071	BELLOWS, INTAKE	8	P003-002260	SPRING	10
123134-04260	SCREW, IDLE ADJUST	10	A206-000000	HOLDER, BELLOWS	8	P003-002380	SCREW	10
123136-09660	BALL	10	A225-000350	CASE, CLEANER	8	P003-005120	SCREW	10
123137-19830	VALVE, INLET NEEDLE	10	A226-000460	ELEMENT, AIR FILTER	8	P021-005581	CAP ASY	4
123138-03930	PIN, METERING LEVER	10	A241-000150	KNOB, CHOKE	4	P021-005810	CLUTCH SHOE SET	18
123139-03930	SCREW, M. LEVER PIN	10	A300-000802	MUFFLER, EXHAUST	12	P021-015050	CRANK CASE KIT	2
123140-03930	GASKET, M. DIAPHRAGM	10	A313-001002	GUIDE, EXHAUST	12	P021-015061	PISTON KIT	2
123142-03930	COVER, M. DIAPHRAGM	10	A356-000031	VALVE, CHECK	4	P021-015072	CRANKSHAFT, ASSY	2
123146-10631	PLUG, WELCH	10	A365-000050	CONNECTOR, CAP	4	P021-015112	GUARD, SPROCKET KIT	18
123149-26030	WASHER	10	A409-000350	ROTOR, MAGNETO	6	P021-036938	COVER, ENGINE	4
123181-39130	PUMP, PRIMER	8	A411-000460	COIL, IGNITION	6	P021-037920	FUEL CAP ASY	4
123185-09660	PISTON ASSY	10	A425-000000	SPARKPLUG	6	P022-001330	SPRING KIT, REWIND	14
123186-09660	SPRING, START VALVE	10	A426-000020	TERMINAL, SPARKPLUG	6	P022-005891	GRIP, STARTER	14
130110-05260	PIPE, IMPULSE	4	A427-000020	CAP, SPARK PLUG	6	P022-008440	ROPE, STARTER	14
130338-32430	PLUG, COVER	4	A440-001190	SWITCH, ON OFF	4	P022-033280	SPRING CASE	14
131205-14931	STRAINER, FUEL	4	A506-000460	REEL, ROPE	14	P022-039170	STARTER CASE	14
132115-01461	GROMMET	4	A507-000110	CATCHER, PAWL	14	V103-000500	GASKET, INTAKE	8
132115-44330	GROMMET	4	A514-000020	PAWL	6	V104-000732	GASKET, EXHAUST	12
150117-16430	SPACER	6	A551-000080	PLATE, CLUTCH	18	V130-000010	GROMMET, CHOKE	4
175012-03930	BEARING, NEEDLE	18	A551-000140	PLATE, CLUTCH	18	V131-000210	GROMMET, NEEDLE	4
177214-03930	WASHER	18	A552-000100	HUB, CLUTCH	18	V137-000000	GROMMET, FUEL	4
						V186-000510	JOINT, PIPE	4

NUMERICAL PARTS INDEX

Part No	Part description	Page	Part No	Part description	Page
V203-000080	BOLT,5	6	V805-000210	BOLT, TORX 5	6
V203-000110	BOLT,5	18	V805-000220	BOLT, TORX 5	2
V203-000120	BOLT,5	12	X123-000132	BAR,GUIDE 35	20
V225-000370	BOLT,STUD 8	4	X223-000080	CHAIN,SAW	20
V265-000200	NUT	18	X490-000510	SCABBARD,CHAIN	20
V341-000120	WASHER,SQUARE	4	X502-000340	LABEL,ECHO	14
V355-000140	COLLAR,8	18	X502-000670	LABEL,ECHO	18
V356-000430	COLLAR,10	18	X503-009270	LABEL,MODEL	4
V376-000450	SPACER	18	X524-001901	LABEL	4
V420-001790	CUSHION	4	X602-000080	TOOL,WRENCH	20
V450-000070	SPRING,COMPRESSION	18	X605-000170	TOOL,L WRENCH	20
V450-000700	SPRING,COMPRESSION	16			
V450-000710	SPRING,COMPRESSION	16			
V450-000720	SPRING,COMPRESSION	16			
V451-000470	SPRING,TENSION	18			
V452-000250	SPRING,TORSION	18			
V452-000260	SPRING,TORSION	16			
V452-001320	SPRING,TORSION	14			
V470-000810	PIPE	4			
V471-001560	PIPE	4			
V471-002170	PIPE	4			
V471-002190	PIPE	8			
V485-001070	LEAD	4			
V485-001080	LEAD	4			
V490-000400	CLIP	4			
V490-001240	CLIP	4			
V505-000011	SEAL,OIL 12	2			
V553-000060	BEARING,NEEDLE 8	2			
V581-000610	RING,O	4			
V582-000050	RING,SNAP	8			
V583-000120	RING	18			
V622-000070	PIN,STRAIGHT 4	4			
V651-000001	GEAR,BEVEL	18			
V651-000011	GEAR,BEVEL	18			
V652-000040	GEAR,WORM	18			
V804-000000	BOLT, TORX 4	18			
V804-000020	BOLT, TORX 4	18			
V804-000030	BOLT, TORX 4	12			
V805-000000	BOLT, TORX 5	8			
V805-000000	BOLT, TORX 5	16			
V805-000010	BOLT, TORX 5	8			
V805-000010	BOLT, TORX 5	14			
V805-000010	BOLT, TORX 5	16			
V805-000040	BOLT, TORX 5	8			
V805-000180	BOLT, TORX 5	4			