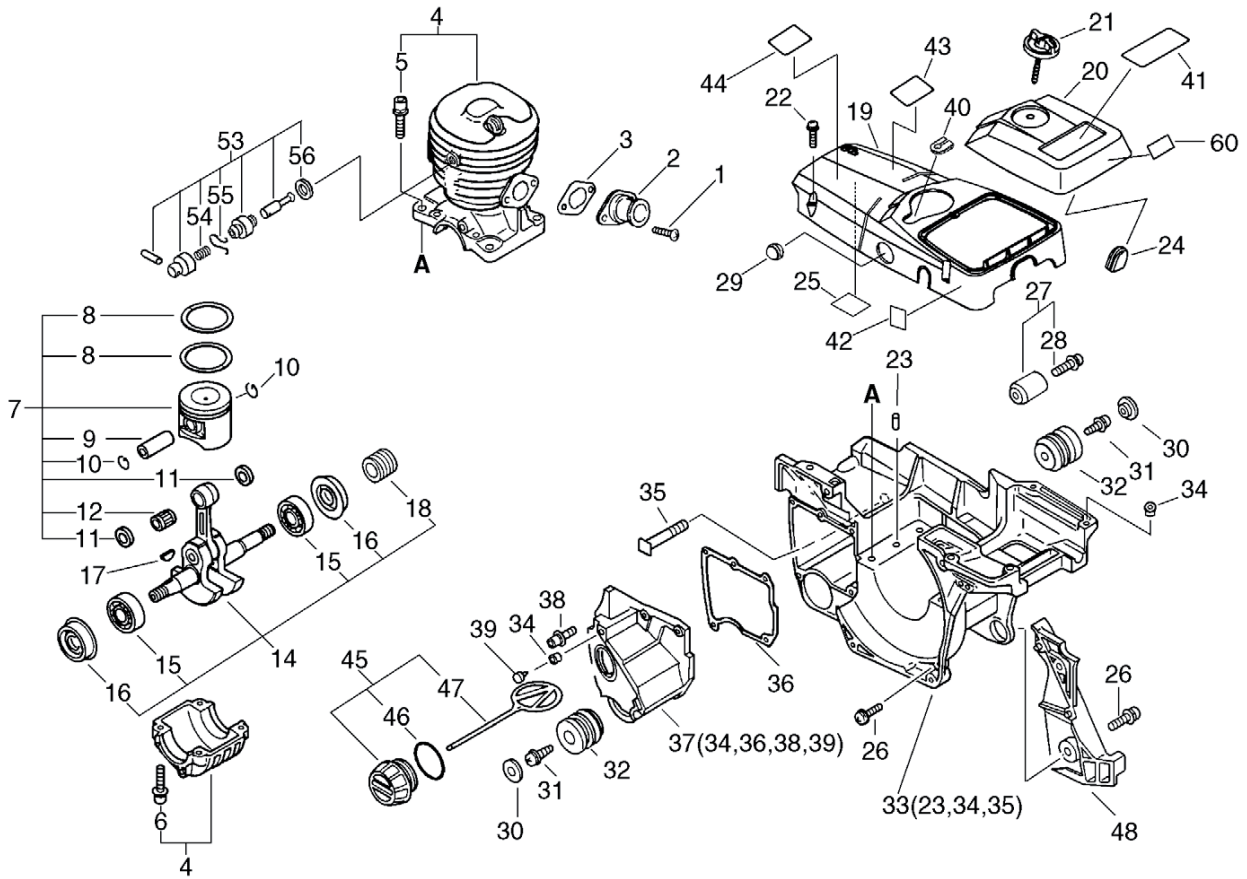


ECHO®



CS-5100

No.1



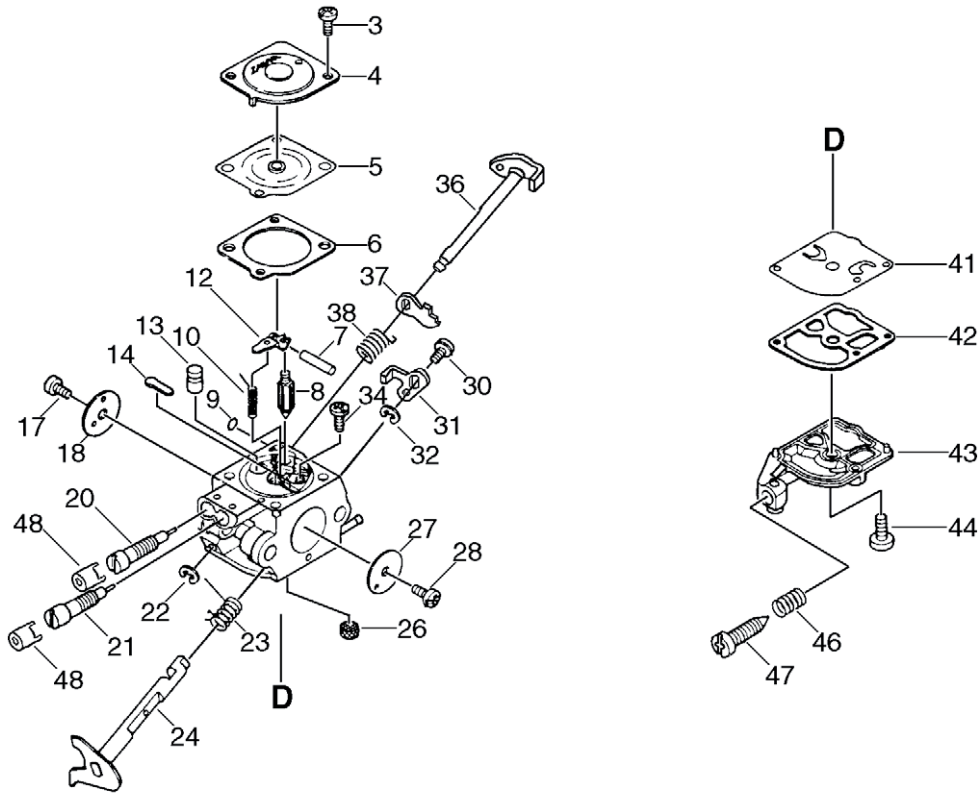
Parts List

Date:24.11.2008 Page: 1

Group:Chain Saws Model:CS-5100 Section:Cylinder, Crankcase, Piston

Key	Lv	Part Number	Q'ty	Description	Remarks	Note
1		900238-05012	2	SCREW 5*12		
2		130510-39932	1	ADAPTER, INTAKE		
3		130016-39930	1	GASKET, INTAKE		
4		P021-001050	1	CRANKCASE SET	Sus. by P021-001051	
4		P021-001051	1	CRANKCASE SET		
5 +		900162-05022	4	BOLT, H.S. 5*22		
6 +		900106-05020	4	BOLT, H.S. 5*20		
7		P021-001060	1	PISTON KIT	Sus. by P021-001062	
7		P021-001061	1	PISTON KIT	Sus. by P021-001062	
7		P021-001062	1	PISTON KIT		
8 +		100011-39730	2	RING, PISTON		
9 +		V609-000000	1	PIN,ENG 11		
10 +		100015-32330	2	CIRCLIP, PISTON PIN		
11 +		V308-000000	2	WASHER,CIRCULAR 11	Sus. by V308-000010	
11 +		V308-000010	2	WASHER,CIRCULAR 11		
12 +		100012-32330	1	BEARING, NEEDLE	Sus. by V556-000000	
12 +		V556-000000	1	BEARING, NEEDLE 11		
14		P021-001070	1	CRANKSHAFT,ASSY	Sus. by P021-001071	
14		P021-001071	1	CRANKSHAFT,ASSY		
15 +		900810-36202	2	BEARING, BALL 6202		
16 +		V508-000000	2	SEAL,OIL 15		
18 +		V652-000000	1	GEAR,WORM		
17		100142-30830	1	KEY, WOODRUFF		
19		A160-000100	1	COVER,CYLINDER	Sus. by A160-000101	
19		A160-000101	1	COVER,CYLINDER		
20		A232-000020	1	LID,CLEANER	Sus. by A232-000021	
20		A232-000021	1	LID,CLEANER		
21		A235-000020	1	KNOB,CLEANER LID		

No.10



Parts List

Date:24.11.2008 Page: 1

Group:Chain Saws Model:CS-5100 Section:Carburetor(Sr/Nr 36001001 and after)

Key	Lv	Part Number	Q'ty	Description	Remarks	Note
		A021-001000	1	CARBURETOR,DIAPHRAGM		
3 +		125344-52130	2	SCREW		
4 +		125342-52130	1	COVER, DIAPHRAGM		
5 +		125341-49030	1	DIAPHRAGM		
6 +		125340-42030	1	GASKET, DIAPHRAGM		
7 +		125338-13930	1	PIN, METERING ARM		
8 +		125337-08260	1	VALVE, INLET NEEDLE		
9 +		125345-13310	1	PLUG, WELCH		
10 +		125322-13930	1	SPRING, COIL		
12 +		125323-08260	1	ARM, VALVE		
13 +		P005-000770	1	NOZZLE CHECK VALVE		
14 +		125345-51030	1	PLUG, WELCH		
17 +		125314-51230	1	SCREW		
18 +		P005-000900	1	VALVE, CHOKE		
20 +		P005-001830	1	SCREW,MAINN MIXTURE		
21 +		P005-001820	1	SCREW, IDLE MIXTURE		
22 +		125327-15130	1	CLIP		
23 +		P005-000790	1	SPRING, THRT.RETURN		
24 +		P005-000780	1	SHAFT ASY, THROTTLE		
26 +		P005-000860	1	SCREEN, FUEL INLET		
27 +		P005-000810	1	VALVE, THROTTLE		
28 +		125314-13930	1	SCREW		
30 +		125348-13930	1	SCREW		
31 +		P005-000800	1	LEVER, THROTTLE		
32 +		125327-13930	1	CLIP		
34 +		125339-13930	1	SCREW		
36 +		P005-001310	1	SHAFT, CHOKE		
37 +		P005-001300	1	LEVER, CHOKE		

Parts List

Group:Chain Saws Model:CS-5100 Section:Air Cleaner, Muffler

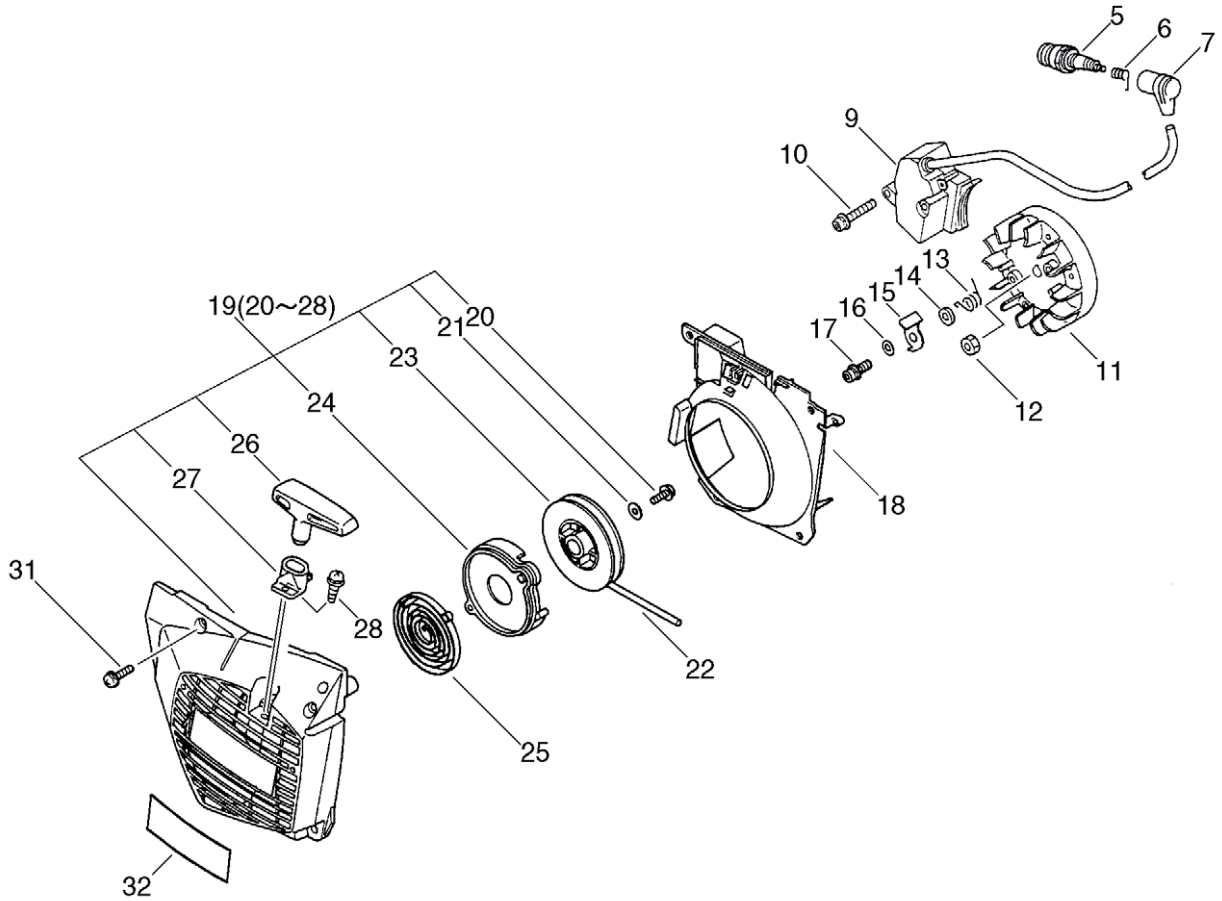
Key	Lv	Part Number	Q'ty	Description	Remarks	Note
4		130000-38330	1	INSULATOR KIT	Sus. by 130000-38331	
4		130000-38331	1	INSULATOR KIT		
5 +		130366-38330	1	CUSHION	Sus. by V420-001130	
5 +		V420-001130	1	CUSHION		
6 +		130020-33330	2	NUT		
7 +		130010-38330	1	GASKET, INTAKE		
8		130110-38330	1	PIPE, IMPULSE		
9		130405-38331	1	BRACKET, AIR CLEANER		
10		130310-38330	1	FILTER, AIR	Sus. by 130310-38331	
10		130310-38331	1	FILTER, AIR		
11		A204-000000	1	ELBOW,CARBURETOR	Sus. by A204-000002	
11		A204-000001	1	ELBOW,CARBURETOR	Sus. by A204-000002	
11		A204-000002	1	ELBOW,CARBURETOR		
12		900162-05050	2	BOLT, H.S. 5*50		
13		130430-38330	1	CUSHION		
14		A021-000100	1	CARBURETOR,DIAPHRAGM	Sr/Nr 010100 and before	
14		A021-000560	1	CARBURETOR,DIAPHRAGM	Sus. by A021-000561	
14		A021-000561	1	CARBURETOR,DIAPHRAGM	Sr/Nr 010101 to 017776	
14		A021-001000	1	CARBURETOR,DIAPHRAGM	Sr/Nr 36001001 and after	
15		129010-33330	1	GROMMET	Sr/Nr 017776 and before,CHINA	
16		900220-04006	1	SCREW 4*6		
17		162010-38330	1	LEAD, GROUND	Sus. by 162010-38332	
17		162010-38331	1	LEAD, GROUND	Sus. by 162010-38332	
17		162010-38332	1	LEAD, GROUND		
18		163804-38930	1	BRACKET, SWITCH	Sus. by 163804-38935	
18		163804-38931	1	BRACKET, SWITCH	Sus. by 163804-38935	
18		163804-38932	1	BRACKET, SWITCH	Sus. by 163804-38935	
18		163804-38933	1	BRACKET, SWITCH	Sus. by 163804-38935	

Parts List

Group:Chain Saws Model:CS-5100 Section:Air Cleaner, Muffler

Key	Lv	Part Number	Q'ty	Description	Remarks	Note
18		163804-38934	1	BRACKET, SWITCH	Sus. by 163804-38935	
18		163804-38935	1	BRACKET, SWITCH		
19 +		163413-38930	1	PLATE, SWITCH		
20 +		163810-38931	1	BRACKET, SWITCH	Sus. by 163810-38933	
20 +		163810-38932	1	BRACKET, SWITCH	Sus. by 163810-38933	
20 +		163810-38933	1	BRACKET, SWITCH		
21 +		178810-14531	1	GROMMET, CHOKE	Sus. by 178810-14534	
21 +		178810-14532	1	GROMMET	Sus. by 178810-14534	
21 +		178810-14533	1	GROMMET	Sus. by 178810-14534	
21 +		178810-14534	1	GROMMET		
22		890157-39130	1	LABEL, SWITCH		
23		163400-38330	1	SWITCH, IGNITION		
24		A241-000000	1	KNOB,CHOKE	Sus. by A241-000100	
24		178510-38331	1	KNOB,CHOKE	Sus. by A241-000100	
24		A241-000100	1	KNOB, CHOKE		
25		C454-000030	1	ROD,THROTTLE	Sus. by C454-000041	
25		C454-000040	1	ROD,THROTTLE	Sus. by C454-000041	
25		C454-000041	1	ROD,THROTTLE		
26		145600-38330	1	MUFFLER ASY	Sus. by P021-008610	
26		145600-38331	1	MUFFLER ASY	Sus. by P021-008610	
26		145600-38332	1	MUFFLER ASY	Sus. by P021-008610	
26		145600-38333	1	MUFFLER ASY	Sus. by P021-008610	
26		P021-008610	1	MUFFLER ASY		
27 +		900105-04006	1	BOLT, H.S. 4*6		
28 +		145711-35430	1	PLATE (BL)	Sus. by 145711-60631	
28 +		145711-60631	1	STAY, MUFFLER		
29 +		900105-05014	2	BOLT, H.S. 5*14		
30 +		145510-35431	1	GASKET, MUFFLER		

No.3



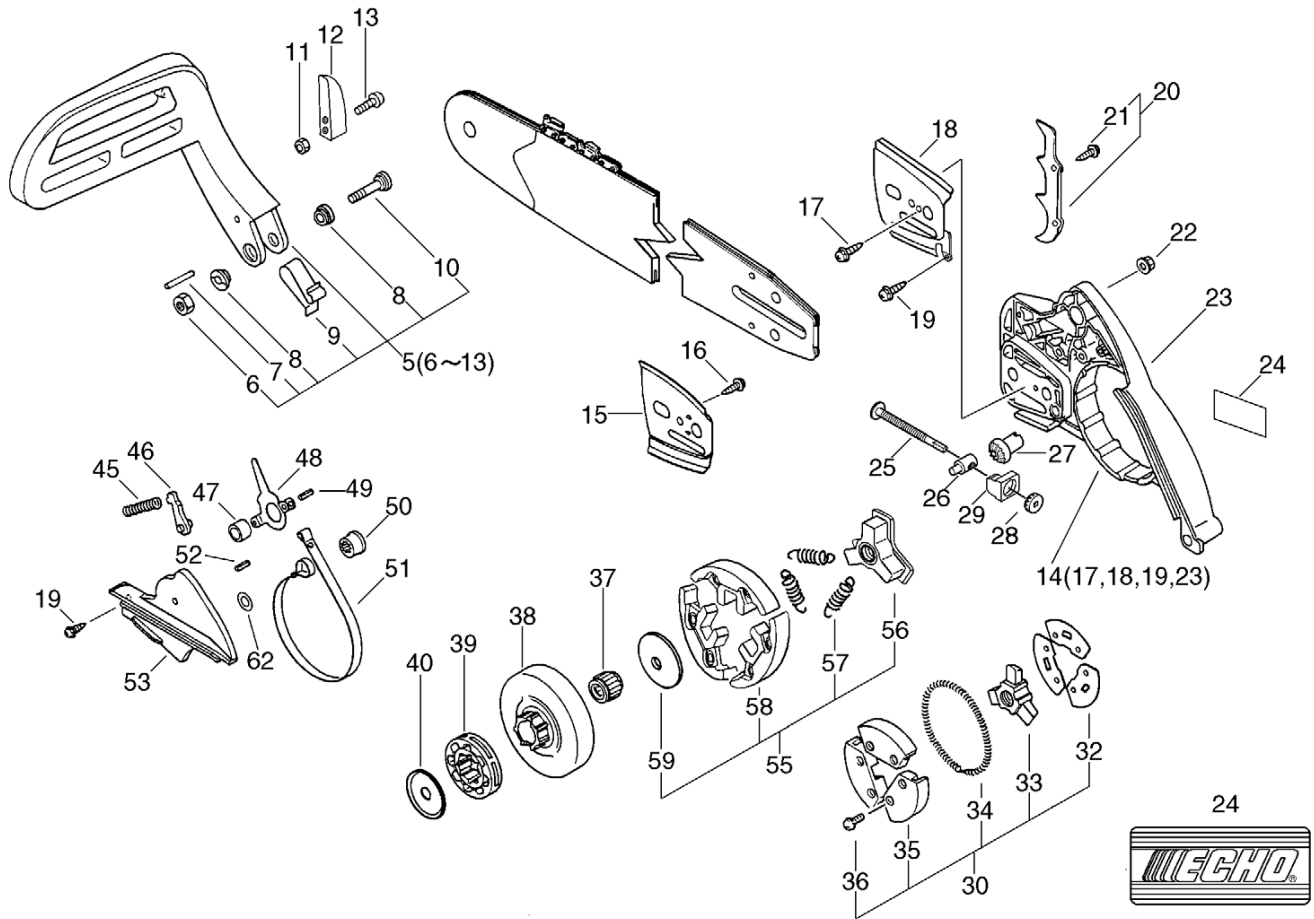
Parts List

Date:24.11.2008 Page: 1

Group:Chain Saws Model:CS-5100 Section:Starter, Magneto

Key	Lv	Part Number	Q'ty	Description	Remarks	Note
5		159017-31730	1	PLUG, SPARK RCJ-6Y		
6		159011-03432	1	COIL, SPARK PLUG	Sr/Nr 36007690 and before	
6		A426-000010	1	COIL, SPARK PLUG	Sr/Nr 36007691 and after	
6		159011-03432	1	COIL, SPARK PLUG	Sr/Nr 21001050 and before, CHINA	
6		A426-000010	1	COIL, SPARK PLUG	Sr/Nr 21001051 and after, CHINA	
7		159012-01620	1	CAP, SPARK PLUG	Sr/Nr 36007690 and before	
7		A427-000012	1	CAP, SPARK PLUG	Sr/Nr 36007691 and after	
7		159012-01620	1	CAP, SPARK PLUG	Sr/Nr 21001050 and before, CHINA	
7		A427-000012	1	CAP, SPARK PLUG	Sr/Nr 21001051 and after, CHINA	
9		A411-000030	1	COIL, IGNITION	Sus. by A411-000031	
9		A411-000031	1	COIL, IGNITION		
10		900162-04030	2	BOLT, H.S. 4*30		
11		A409-000030	1	ROTOR, MAGNETO		
12		900515-00008	1	NUT, FLANGE 8		
13		177234-35430	2	SPRING, RETURN		
14		177247-04630	2	SPACER, RATCHET		
15		177218-19830	2	PAWL, STARTER		
16		900603-00005	2	WASHER 5		
17		900162-05014	2	BOLT, H.S. 5*14		
18		A172-000060	1	COVER, FAN	Sus. by A172-000062	
18		A172-000061	1	COVER, FAN	Sus. by A172-000062	
18		A172-000062	1	COVER, FAN		
19		177200-38333	1	STARTER ASY	Sus. by 177200-38335	
19		177200-38334	1	STARTER ASY	Sus. by 177200-38335	
19		177200-38335	1	STARTER ASY		
20	+	900238-05012	1	SCREW 5*12		
21	+	177214-02830	1	WASHER		
22	+	177226-38330	1	ROPE, STARTER		

No.5



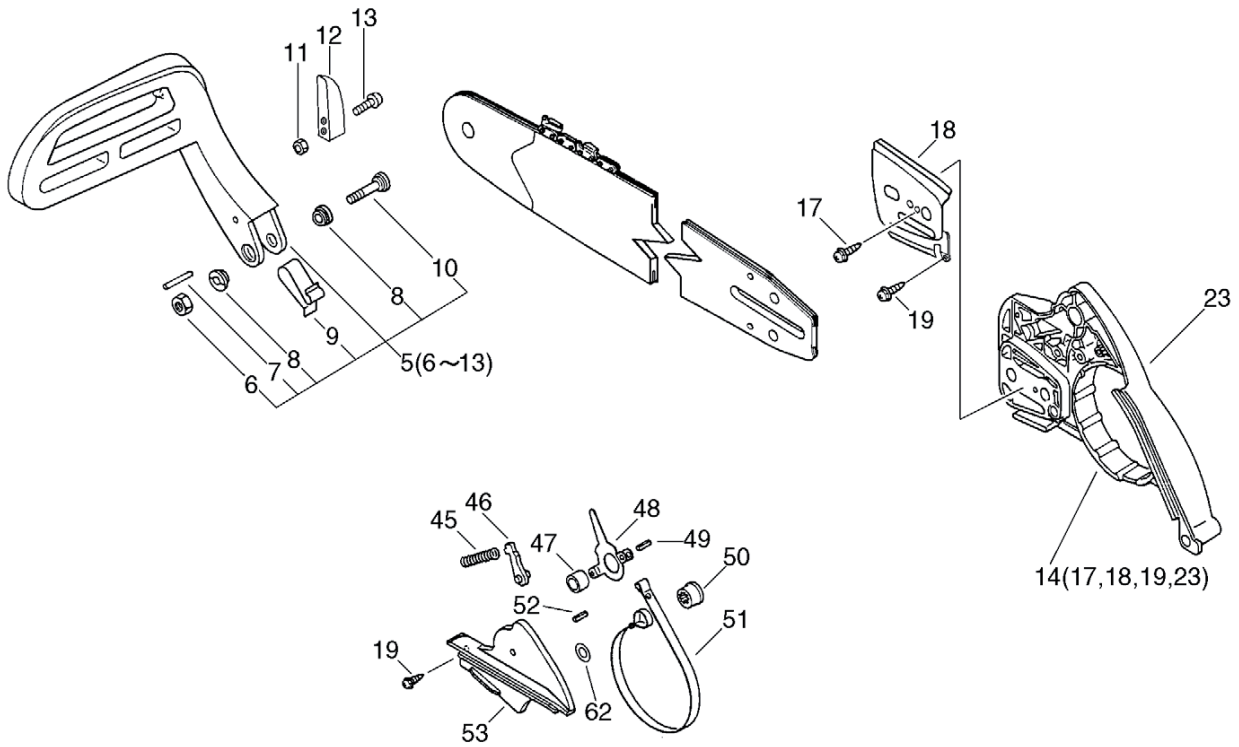
Parts List

Date:24.11.2008 Page: 1

Group:Chain Saws Model:CS-5100 Section:Clutch, Sprocket

Key	Lv	Part Number	Q'ty	Description	Remarks	Note
5		433201-39331	1	LEVER ASSY, BRAKE	Sus. by 433201-39332	
5		433201-39332	1	LEVER ASSY, BRAKE		
6 +		900560-00005	1	NUT, LOCK	Sus. by 900562-50005	
6 +		900562-50005	1	NUT, LOCK		
7 +		900330-30240	1	PIN 3*24		
8 +		433167-39130	2	SPACER		
9 +		433114-38331	1	SPRING		
10 +		900209-05030	1	SCREW, 5*30	Sus. by 91318-05032	
10 +		91318-05032	1	SCREW		
11 +		900500-00004	2	NUT 4		
12 +		433171-39330	1	WEIGHT, BRAKE		
13 +		900238-04018	2	SCREW 4*18		
23		433005-38932	1	GUARD, SPROCKET	Sus. by P021-001290	
14		P021-001290	1	GUARD, SPROCKET SET		
17 +		900220-03006	1	SCREW 3*6		
18 +		C305-000000	1	PLATE, SPROCKET GUARD	Sus. by C305-000001	
18 +		C305-000001	1	PLATE, SPROCKET GUARD		
19 +		900253-04010	1	SCREW 4*10		
23 +		433005-38933	1	GUARD, SPROCKET	Sr/Nr 003151 and after	
15		433013-37330	1	PLATE, GUIDE	Sus. by 433013-35431	
15		433013-35431	1	PLATE, GUIDE (INNER)		
16		900220-04006	1	SCREW 4*6		
19		900253-04010	2	SCREW 4*10		
20		880200-38330	1	BUMPER, SPIKED KIT		
21 +		900105-05012	2	BOLT, H.S. 5*12		
22		433019-12330	2	NUT, FLANGE 8		
24		X502-000000	1	LABEL, ECHO		
25		V203-000040	1	BOLT, 5	Sus. by V203-000041	

No.6



Parts List

Group:Chain Saws Model:CS-5100 Section:Chain Brake Asy

Key	Lv	Part Number	Q'ty	Description	Remarks	Note
		433100-38932	1	BRAKE ASY, CHAIN	Sus. by 433100-38936	
		433100-38933	1	BRAKE ASY, CHAIN	Sus. by 433100-38936	
		433100-38934	1	BRAKE ASY, CHAIN	Sus. by 433100-38936	
		433100-38935	1	BRAKE ASY, CHAIN	Sus. by 433100-38936	
		433100-38936	1	BRAKE ASY, CHAIN		
5	+	433201-39331	1	LEVER ASSY, BRAKE	Sus. by 433201-39332	
5	+	433201-39332	1	LEVER ASSY, BRAKE		
6	++	900560-00005	1	NUT, LOCK	Sus. by 900562-50005	
6	++	900562-50005	1	NUT, LOCK		
7	++	900330-30240	1	PIN 3*24		
8	++	433167-39130	2	SPACER		
9	++	433114-38331	1	SPRING		
10	++	900209-05030	1	SCREW, 5*30	Sus. by 91318-05032	
10	++	91318-05032	1	SCREW		
11	++	900500-00004	2	NUT 4		
12	++	433171-39330	1	WEIGHT, BRAKE		
13	++	900238-04018	2	SCREW 4*18		
23	+	433005-38932	1	GUARD, SPROCKET	Sus. by P021-001290	
14	+	P021-001290	1	GUARD, SPROCKET SET		
17	++	900220-03006	1	SCREW 3*6		
18	++	C305-000000	1	PLATE, SPROCKET GUARD	Sus. by C305-000001	
18	++	C305-000001	1	PLATE, SPROCKET GUARD		
19	++	900253-04010	1	SCREW 4*10		
23	++	433005-38933	1	GUARD, SPROCKET	Sr/Nr 003151 and after	
19	+	900253-04010	2	SCREW 4*10		
45	+	433122-35430	1	SPRING, BRAKE		
46	+	433209-35430	1	STOPPER, BRAKE		
47	+	433115-38330	1	WASHER 5.2*12*14		

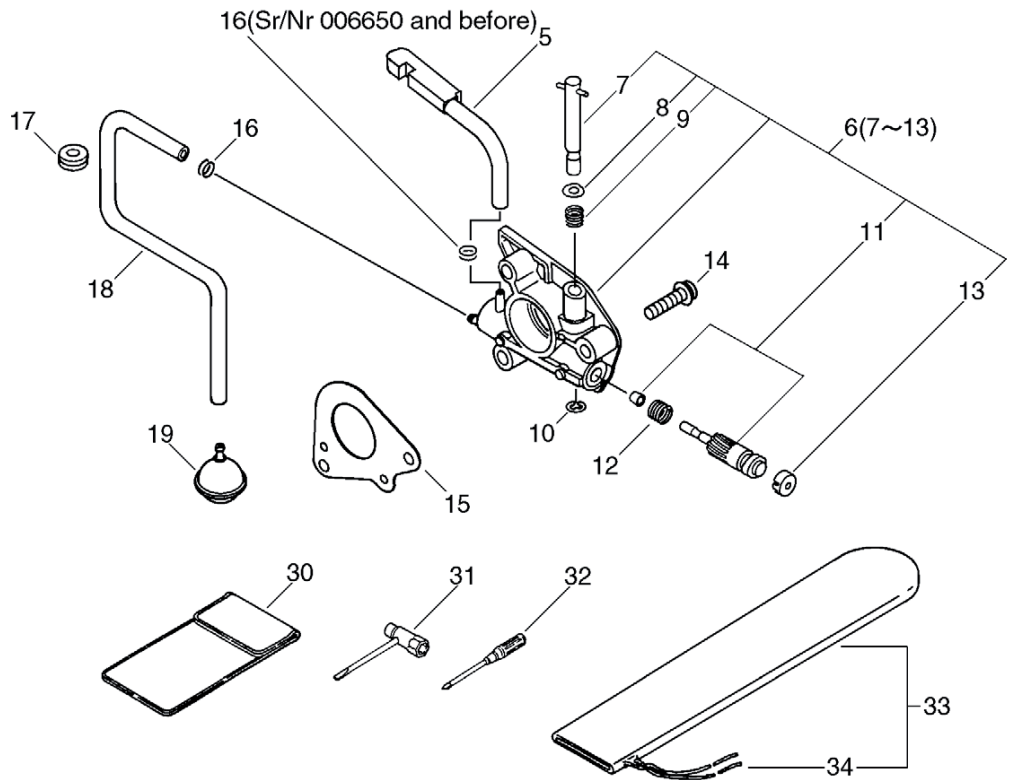
P a r t s L i s t

Group:Chain Saws Model:CS-5100 Section:Chain Brake Asy

Key	Lv	Part Number	Q'ty	Description	Remarks	Note
48	+	433208-35431	1	LEVER, BRAKE		
49	+	900330-40088	1	ROLLER 4*8.8		
50	+	433142-35430	1	ADJUSTER, BRAKE		
51	+	433123-35430	1	BAND, BRAKE	Sus. by C328-000060	
51	+	C328-000060	1	BAND, BRAKE		
52	+	900342-25012	1	PIN, SPRING 2.5*12		
53	+	433310-38330	1	COVER, BRAKE		
62	+	V304-000090	1	WASHER,CIRCULAR 6	Sr/Nr 36002911 and after	

Group:Chain Saws Model:CS-5100 Section:Auto-Oiler, Tools

No.7



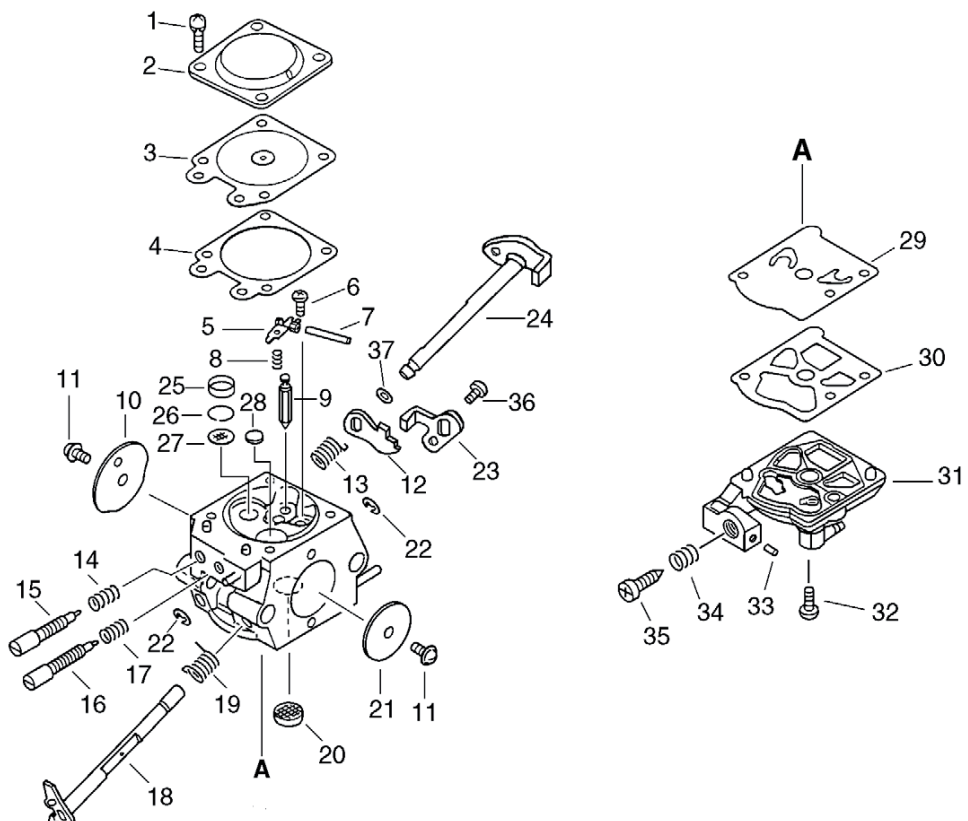
Parts List

Group:Chain Saws Model:CS-5100 Section:Auto-Oiler, Tools

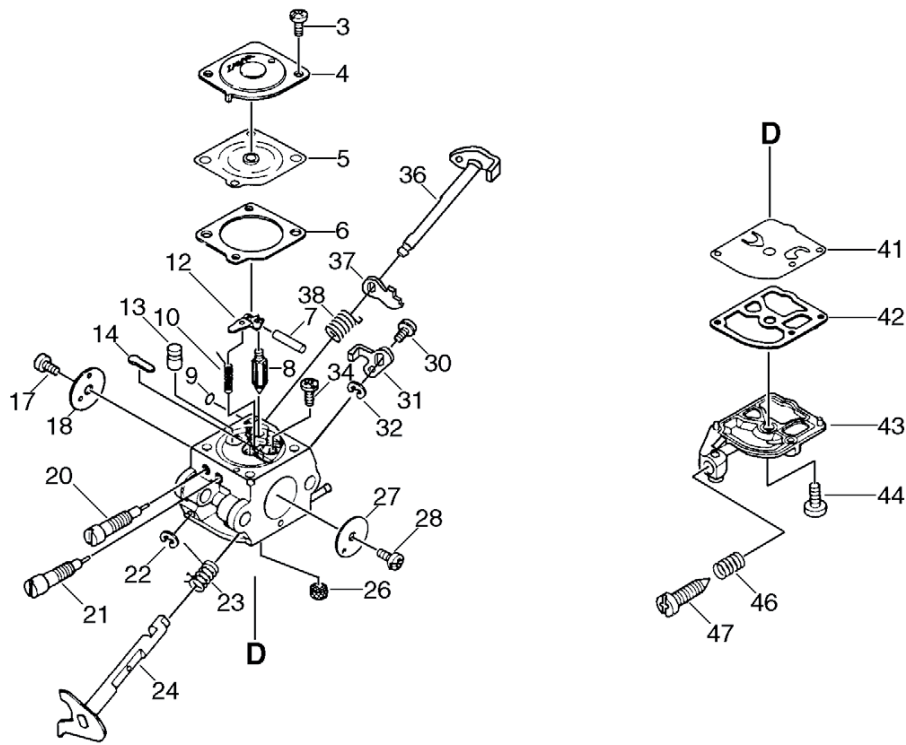
Key	Lv	Part Number	Q'ty	Description	Remarks	Note
5		437229-38331	1	PIPE		
6		437002-38330	1	AUTO-OILER ASSY		
7 +		437016-38330	1	NEEDLE, ADJUST		
8 +		437029-37330	1	WASHER		
9 +		437015-37330	1	SPRING		
10 +		123127-15030	1	RING		
11 +		437024-37330	1	PLUNGER		
12 +		437019-38330	1	SPRING		
13 +		437062-38330	1	CAP, OIL PUMP		
14		900223-04016	2	SCREW		
15		175310-38330	1	PLATE, SEAL		
16		132013-26630	2	CLIP	Sr/Nr 006650 and before	
16		132013-26630	1	CLIP	Sr/Nr 006651 and after	
17		132115-12330	1	GROMMET		
18		437210-38330	1	PIPE, FUEL		
19		436205-14730	1	STRAINER, OIL		
30		898510-39130	1	BAG, TOOL		
31		895410-02830	1	WRENCH, W/S. DRIVER		
32		895811-00130	1	DRIVER, SCREW 125		
33		898548-14531	1	SCABBARD, CHAIN		
34 +		898568-14530	1	ROPE		

Group:Chain Saws Model:CS-5100 Section:Carburetor(Sr/Nr 010100 and before)

No.8



No.9



Parts List

Date:24.11.2008 Page: 1

Group:Chain Saws Model:CS-5100 Section:Carburetor(Sr/Nr 010101 to 017776,CHINA)

Key	Lv	Part Number	Q'ty	Description	Remarks	Note
		A021-000560	1	CARBURETOR,DIAPHRAGM	Sus. by A021-000561	
		A021-000561	1	CARBURETOR,DIAPHRAGM		
3	+	125344-52130	2	SCREW		
4	+	125342-13210	1	COVER, DIAPHRAGM		
5	+	125341-49030	1	DIAPHRAGM		
6	+	125340-42030	1	GASKET, DIAPHRAGM		
7	+	125338-13930	1	PIN, METERING ARM		
8	+	125337-08260	1	VALVE, INLET NEEDLE		
9	+	125345-13310	1	PLUG, WELCH		
10	+	125322-13930	1	SPRING, COIL		
12	+	125323-08260	1	ARM, VALVE		
13	+	P005-000770	1	NOZZLE CHECK VALVE		
14	+	125345-51030	1	PLUG, WELCH		
17	+	125314-51230	1	SCREW		
18	+	P005-000900	1	VALVE, CHOKE		
20	+	P005-000850	1	NEEDLE, HIGH SPEED		
21	+	P005-000840	1	NEEDLE, IDLE		
22	+	125327-15130	1	CLIP		
23	+	P005-000790	1	SPRING, THRT. RETURN		
24	+	P005-000780	1	SHAFT ASY, THROTTLE		
26	+	P005-000860	1	SCREEN, FUEL INLET		
27	+	P005-000810	1	VALVE, THROTTLE		
28	+	125314-13930	1	SCREW		
30	+	125348-13930	1	SCREW		
31	+	P005-000800	1	LEVER, THROTTLE		
32	+	125327-13930	1	CLIP		
34	+	125339-13930	1	SCREW		
36	+	P005-000870	1	SHAFT, CHOKE	Sus. by P005-001310	

