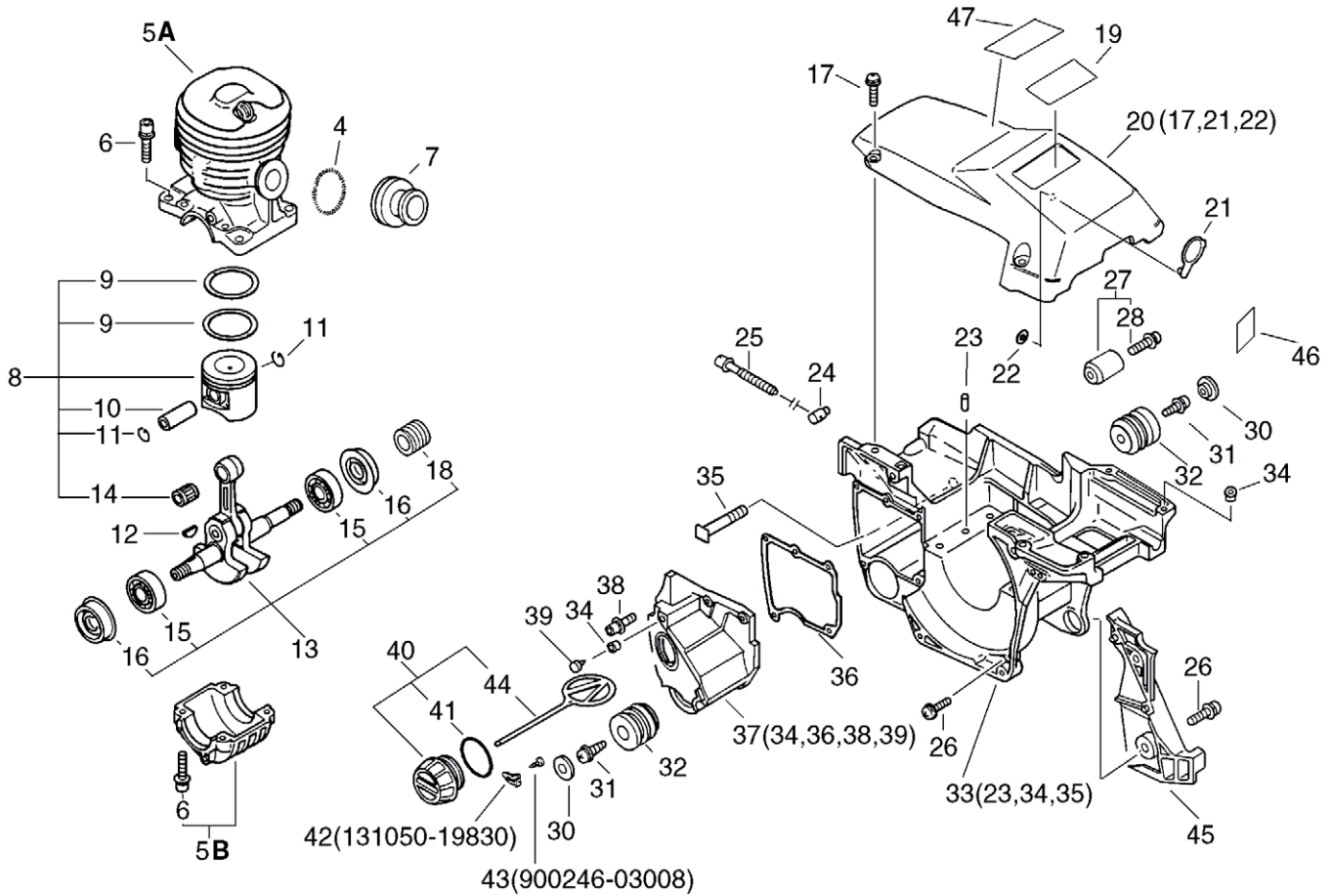


ECHO®



CS-4400

No.1



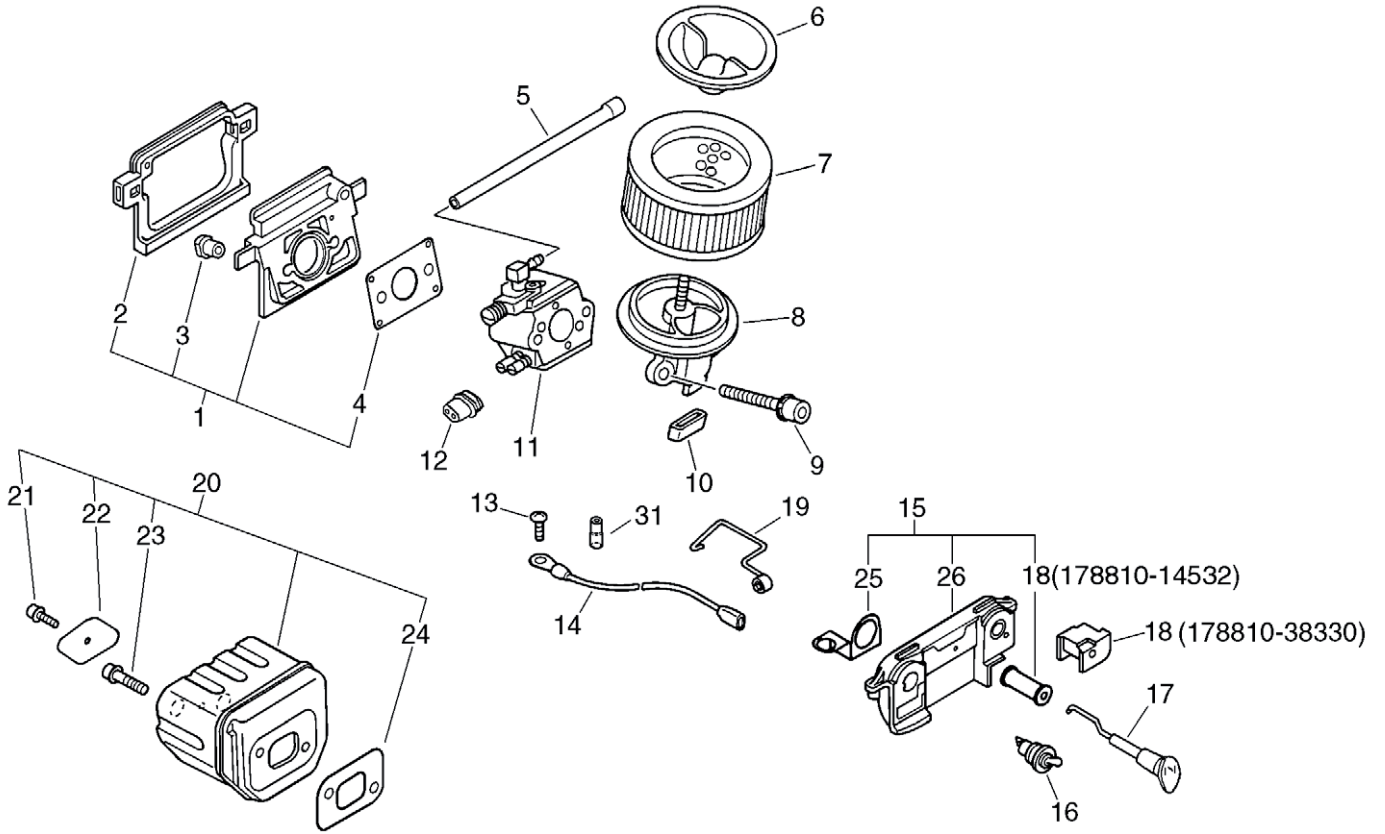
Parts List

Date:24.11.2008 Page: 1

Group:Chain Saws Model:CS-4400 Section:Cylinder, Crankcase, Piston

Key	Lv	Part Number	Q'ty	Description	Remarks	Note
4		130516-35430	1	SPRING, TENSION		
5		100202-38930	1	CRANKCASE SET	Sus. by P021-004060	
5		100202-38931	1	CRANKCASE SET	Sus. by P021-004060	
5		P021-004060	1	CRANKCASE SET		
6 +		900162-05022	4	BOLT, H.S. 5*22		
6		900162-05022	4	BOLT, H.S. 5*22		
7		130510-38330	1	ADAPTER, INTAKE		
8		100000-38930	1	PISTON KIT	Sus. by 100000-38932	
8		100000-38931	1	PISTON KIT	Sus. by 100000-38932	
8		100000-38932	1	PISTON KIT		
9 +		100011-38930	2	RING, PISTON		
10 +		100013-35430	1	PIN, PISTON		
11 +		100015-03930	2	CIRCLIP, PISTON PIN	Sus. by 100015-03931	
11 +		100015-03931	2	CIRCLIP, PISTON PIN		
14 +		100012-35430	1	BEARING, NEEDLE		
12		100142-39130	1	KEY, WOODRUFF		
13		100101-38330	1	CRANKSHAFT ASY	Sr/Nr 611990 and before	
13		P021-007290	1	CRANKSHAFT ASY	Sr/Nr 611991 and after	
15 +		900888-36201	2	BEARING, BALL 6201		
16 +		100213-38330	2	OILSEAL	Sr/Nr 611990 and before	
16 +		V505-000010	2	OILSEAL	Sr/Nr 611991 and after	
18 +		437063-38330	1	GEAR, WORM		
19		890611-39330	1	LABEL, MODEL	Sus. by 890611-39331	
19		890611-39331	1	LABEL, MODEL		
20		101501-38330	1	COVER, CYLINDER ASY		
17 +		163890-38330	3	BOLT, 5		
21 +		101579-38330	1	PLATE, WIND PROOF		
22 +		900580-00004	1	PUSH, RING		

No.2



Parts List

Date:24.11.2008 Page: 1

Group:Chain Saws Model:CS-4400 Section:Air Cleaner, Muffler

Key	Lv	Part Number	Q'ty	Description	Remarks	Note
1		130000-38330	1	INSULATOR KIT	Sus. by 130000-38331	
1		130000-38331	1	INSULATOR KIT		
2 +		130366-38330	1	CUSHION	Sus. by V420-001130	
2 +		V420-001130	1	CUSHION		
3 +		130020-33330	2	NUT		
4 +		130010-38330	1	GASKET, INTAKE		
5		130110-38330	1	PIPE, IMPULSE		
6		130405-38331	1	BRACKET, AIR CLEANER		
7		130310-38330	1	FILTER, AIR	Sus. by 130310-38331	
7		130310-38331	1	FILTER, AIR		
8		130301-38331	1	ELBOW, CARBURETOR	Sus. by 130301-38332	
8		130301-38332	1	ELBOW, CARBURETOR		
9		900162-05050	2	BOLT, H.S. 5*50		
10		130430-38330	1	CUSHION		
11		123000-38331	1	CARBURETOR ASY	Sus. by 123000-38332	
11		123000-38332	1	CARBURETOR ASY	Sr/Nr 613855 and before	
11		123000-39333	1	CARBURETOR ASY	Sr/Nr 36001001 and after	
12		129010-33330	1	GROMMET	Sr/Nr 613855 and before	
13		900220-04006	1	SCREW 4*6		
14		162010-38330	1	LEAD, GROUND	Sus. by 162010-38332	
14		162010-38331	1	LEAD, GROUND	Sus. by 162010-38332	
14		162010-38332	1	LEAD, GROUND		
15		163810-38330	1	BRACKET, SWITCH	Sus. by 163804-38935	
15		163804-38930	1	BRACKET, SWITCH	Sus. by 163804-38935	
15		163804-38931	1	BRACKET, SWITCH	Sus. by 163804-38935	
15		163804-38932	1	BRACKET, SWITCH	Sus. by 163804-38935	
15		163804-38935	1	BRACKET, SWITCH		
18 +		178810-14531	1	GROMMET, CHOKE	Sus. by 178810-14534	

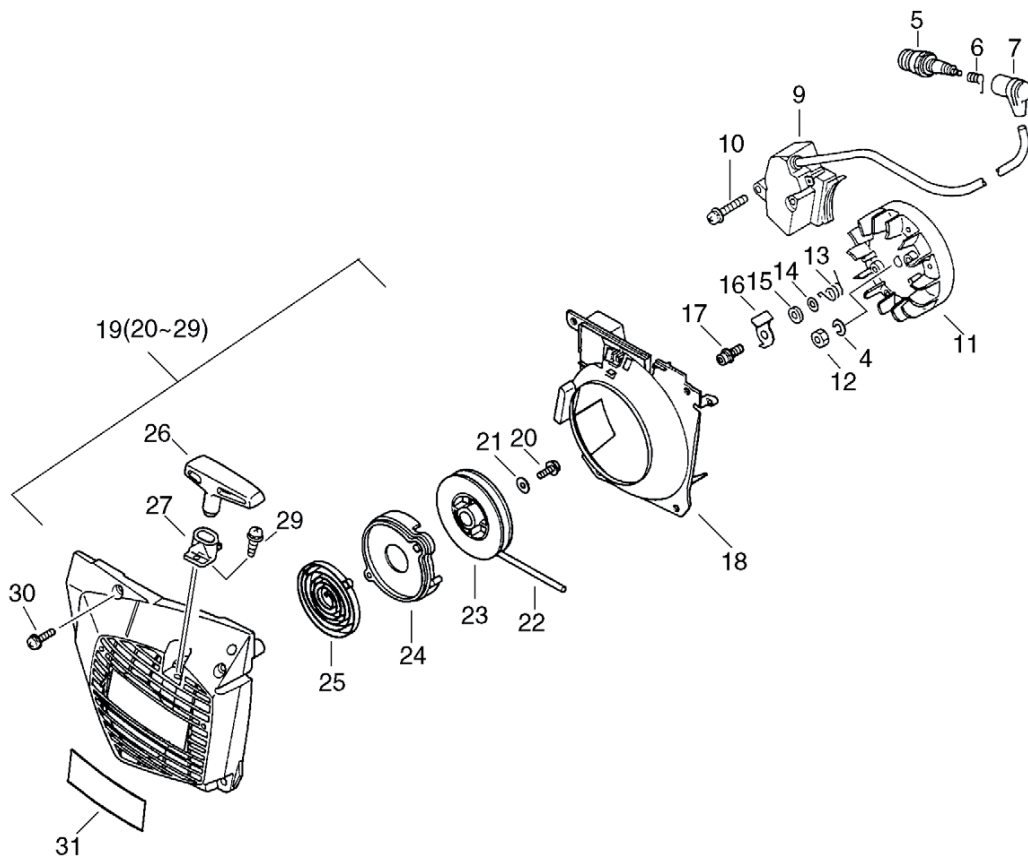
Parts List

Group:Chain Saws Model:CS-4400 Section:Air Cleaner, Muffler

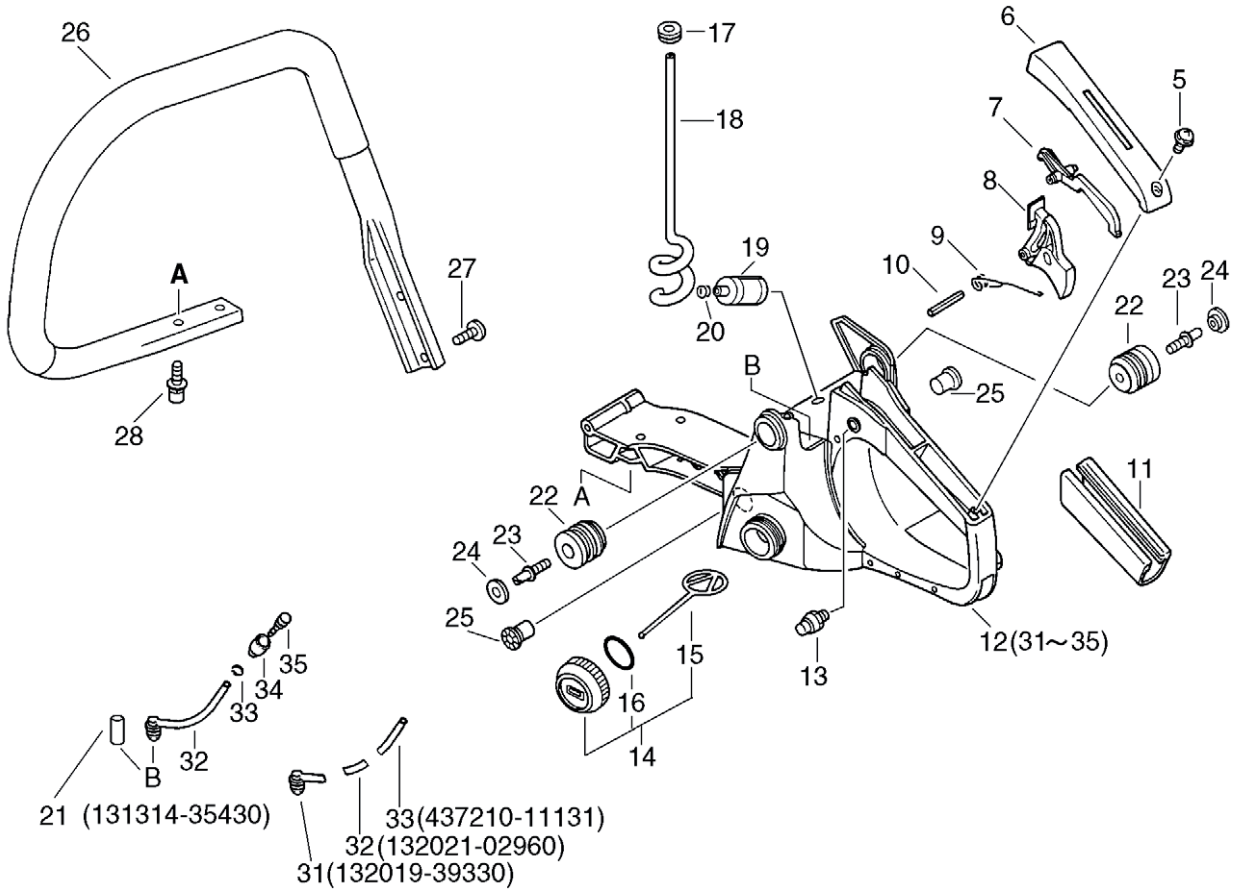
Key	Lv	Part Number	Q'ty	Description	Remarks	Note
18	+	178810-14532	1	GROMMET	Sus. by 178810-14534	
18	+	178810-14533	1	GROMMET	Sus. by 178810-14534	
18	+	178810-14534	1	GROMMET	Sr/Nr 504117 and after	
25	+	163413-38930	1	PLATE, SWITCH	Sr/Nr 504117 and after	
26	+	163810-38931	1	BRACKET, SWITCH	Sus. by 163810-38933	
26	+	163810-38932	1	BRACKET, SWITCH	Sus. by 163810-38933	
26	+	163810-38933	1	BRACKET, SWITCH	Sr/Nr 504117 and after	
16		163400-38330	1	SWITCH, IGNITION		
17		178510-38330	1	ROD, CHOKE	Sus. by A241-000100	
17		178510-38331	1	ROD, CHOKE	Sus. by A241-000100	
17		A241-000100	1	KNOB, CHOKE		
18		178810-38330	1	GROMMET, CHOKE	Sr/Nr 504116 and before	
19		178011-38331	1	ROD, THROTTLE		
20		145600-38330	1	MUFFLER ASY	Sus. by P021-008610	
20		145600-38331	1	MUFFLER ASY	Sus. by P021-008610	
20		145600-38332	1	MUFFLER ASY	Sus. by P021-008610	
20		145600-38333	1	MUFFLER ASY	Sus. by P021-008610	
20		P021-008610	1	MUFFLER ASY		
21	+	900105-04006	1	BOLT, H.S. 4*6		
22	+	145711-35430	1	PLATE (BL)	Sus. by 145711-60631	
22	+	145711-60631	1	STAY, MUFFLER		
23	+	900105-05014	2	BOLT, H.S. 5*14		
24	+	145510-35431	1	GASKET, MUFFLER		
31		C483-000000	1	BOOT, CONNECTOR		

Group:Chain Saws Model:CS-4400 Section:Starter, Magneto

No.3



No.4



Parts List

Date:24.11.2008 Page: 1

Group:Chain Saws Model:CS-4400 Section:Handle

Key	Lv	Part Number	Q'ty	Description	Remarks	Note
5		900253-04014	1	SCREW 4*14		
6		351155-35430	1	COVER, HANDLE (BL)		
7		178090-37930	1	LOCKOUT, T. CONTROL		
8		178010-38330	1	TRIGGER, THROTTLE	Sus. by C450-000000	
8		178010-38331	1	TRIGGER, THROTTLE	Sus. by C450-000000	
8		C450-000000	1	TRIGGER, THROTTLE		
9		178043-35430	1	SPRING, THR.RETURN		
10		900345-40030	1	PIN, SPRING 4*30SUS		
11		351111-19830	1	GRIP, HANDLE		
12		351103-38330	1	HANDLE, REAR	Sus. by 351101-38332	
12		351101-38330	1	HANDLE ASY, REAR	Sus. by 351101-38332	
12		351101-38331	1	HANDLE ASY, REAR	Sus. by 351101-38332	
12		351101-38332	1	HANDLE ASY, REAR		
31 +		132019-39330	1	GROMMET, FUEL	Sr/Nr 501670 and before	
32 +		132021-02960	1	CONNECTOR, FUEL PIPE	Sr/Nr 501670 and before	
32 +		132012-39330	1	PIPE, W/GROMMET	Sr/Nr 501671 and after	
33 +		437210-11131	1	PIPE 3*5*90 NBR	Sr/Nr 501670 and before	
33 +		132013-26630	1	CLIP	Sr/Nr 501671 and after	
34 +		131328-40630	1	COVER, VENT		
35 +		131300-40630	1	VALVE, CHECK	Sus. by 131300-56430	
35 +		131300-56430	1	VALVE, CHECK		
13		178302-12330	1	LATCH, THROTTLE		
14		131004-37931	1	CAP ASY, FUEL TANK	Sus. by 131004-37932	
14		131004-37932	1	CAP ASY, FUEL TANK		
15 +		131051-19830	1	LINK	Sus. by A365-000050	
15 +		A365-000050	1	CONNECTOR,CAP		
16 +		900720-00022	1	O-RING 22		
17		132115-04920	1	GROMMET		

Parts List

Date:24.11.2008 Page: 1

Group:Chain Saws Model:CS-4400 Section:Clutch, Sprocket, Tools

Key	Lv	Part Number	Q'ty	Description	Remarks	Note
5		433201-39330	1	LEVER ASY, BRAKE	Sus. by 433201-39332	
5		433201-39331	1	LEVER ASY, BRAKE	Sus. by 433201-39332	
5		433201-39332	1	LEVER ASY, BRAKE		
6	+	900330-30240	1	PIN 3*24		
7	+	433167-39130	2	SPACER		
8	+	900560-00005	1	NUT, LOCK	Sus. by 900562-50005	
8	+	900562-50005	1	NUT, LOCK		
9	+	433114-38330	1	SPRING	Sus. by 433114-38331	
9	+	433114-38331	1	SPRING		
10	+	900209-05030	1	SCREW, 5*30	Sus. by 91318-05032	
10	+	91318-05032	1	SCREW		
11	+	433171-39330	1	WEIGHT, BRAKE		
12	+	900238-04018	2	SCREW 4*18		
13	+	900500-00004	2	NUT 4		
14		V203-000040	1	BOLT,5	Sus. by V203-000041	
14		V203-000041	1	BOLT,5	Sr/Nr 517301 and after	
15		433014-60930	1	TENSIONER, CHAIN	Sus. by C309-000030	
15		C309-000030	1	TENSIONER, CHAIN	Sr/Nr 517301 and after	
16		V651-000010	1	GEAR,BEVEL	Sus. by V651-000011	
16		V651-000011	1	GEAR,BEVEL	Sr/Nr 517301 and after	
17		V355-000030	1	COLLAR,8	Sus. by V355-000270	
17		V355-000270	1	COLLAR,8	Sr/Nr 517301 and after	
18		V651-000000	1	GEAR,BEVEL	Sus. by V651-000001	
18		V651-000001	1	GEAR,BEVEL	Sr/Nr 517301 and after	
19		900220-04006	1	SCREW 4*6		
20		433013-35431	1	PLATE, GUIDE (INNER)		
22		433012-38330	1	PLATE, SPROCK. GUARD	Sr/Nr 514840 and before	
25		433005-38930	1	GUARD, SPROCKET	Sus. by P021-001290	

Parts List

Date:24.11.2008 Page: 2

Group:Chain Saws Model:CS-4400 Section:Clutch, Sprocket, Tools

Key	Lv	Part Number	Q'ty	Description	Remarks	Note
23		P021-000480	1	SPROCKET GUARD KIT	Sus. by P021-001290	
23		P021-000481	1	SPROCKET GUARD KIT	Sus. by P021-001290	
25		433005-38931	1	GUARD, SPROCKET	Sus. by P021-001290	
25		433005-38932	1	GUARD, SPROCKET	Sus. by P021-001290	
23		P021-001290	1	GUARD, SPROCKET SET		
21	+	900220-03006	1	SCREW 3*6		
22	+	C305-000000	1	PLATE, SPROCKET GUARD	Sus. by C305-000001	
22	+	C305-000001	1	PLATE, SPROCKET GUARD	Sr/Nr 514841 and after	
25	+	433005-38933	1	GUARD, SPROCKET	Sr/Nr 520222 and after	
38	+	900253-04010	1	SCREW 4*10	Sr/Nr 514841 and after	
55	+	V162-000020	1	PLUG	Can be needed for non-side-access type models	
24		433019-12330	2	NUT, FLANGE 8		
26		175000-35431	1	CLUTCH ASY	Sr/Nr 601000 and before	
27	+	175062-35430	3	SPACER	Sr/Nr 601000 and before	
28	+	175019-19830	3	PLATE, CLUTCH	Sr/Nr 601000 and before	
29	+	175016-35430	1	HUB, CLUTCH	Sr/Nr 601000 and before	
30	+	175018-19830	1	SPRING, CLUTCH	Sr/Nr 601000 and before	
31	+	175002-19830	1	SHOE, CLUTCH	Sr/Nr 601000 and before	
32	+	900105-04006	6	BOLT, H.S. 4*6	Sr/Nr 601000 and before	
26		175000-59530	1	CLUTCH ASY	Sr/Nr 601001 to 612390	
27	+	175016-59530	1	HUB, CLUTCH	Sr/Nr 601001 to 612390	
28	+	175018-59530	1	SPRING, CLUTCH	Sr/Nr 601001 to 612390	
29	+	175002-59530	1	SHOE, CLUTCH	Sr/Nr 601001 to 612390	
30	+	175022-59530	3	SPRING, FLAT	Sr/Nr 601001 to 612390	
31		175019-59530	1	PLATE, CLUTCH	Sr/Nr 601001 to 612390	
33		175012-14630	1	BEARING, NEEDLE		
34		175105-35430	1	DRUM, CLUTCH	Sus. by A556-000170	
34		A556-000170	1	DRUM, CLUTCH		

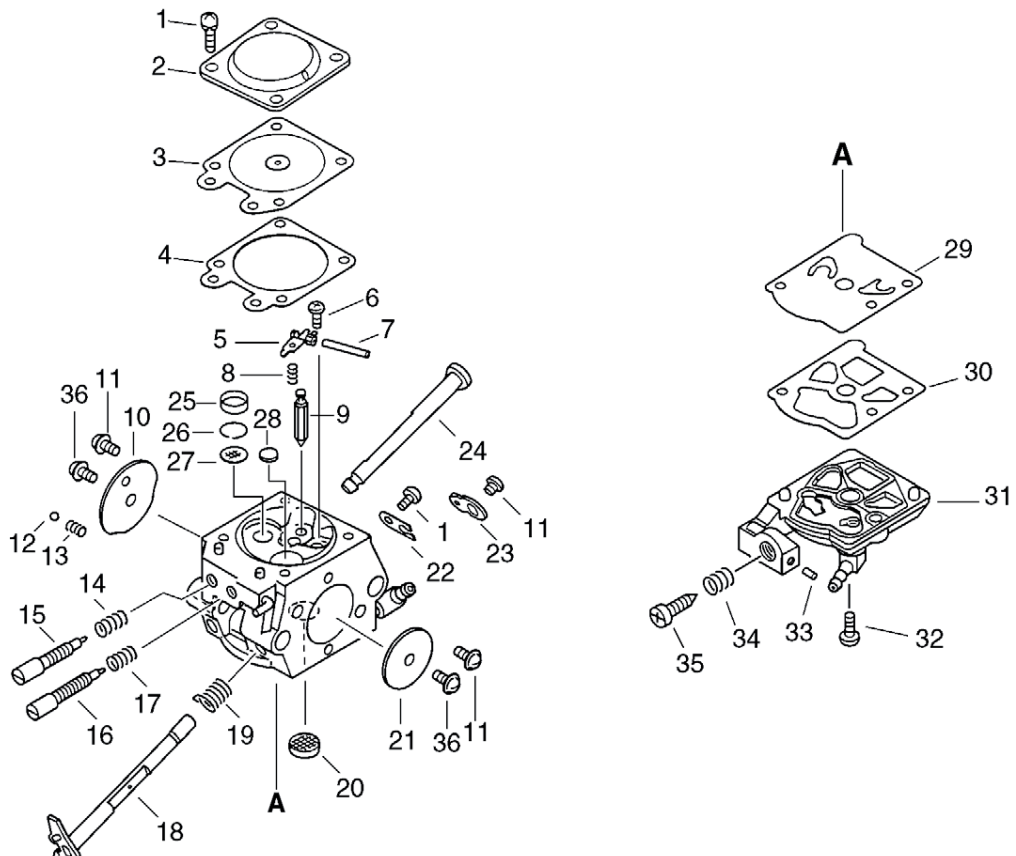
Parts List

Group:Chain Saws Model:CS-4400 Section:Clutch, Sprocket, Tools

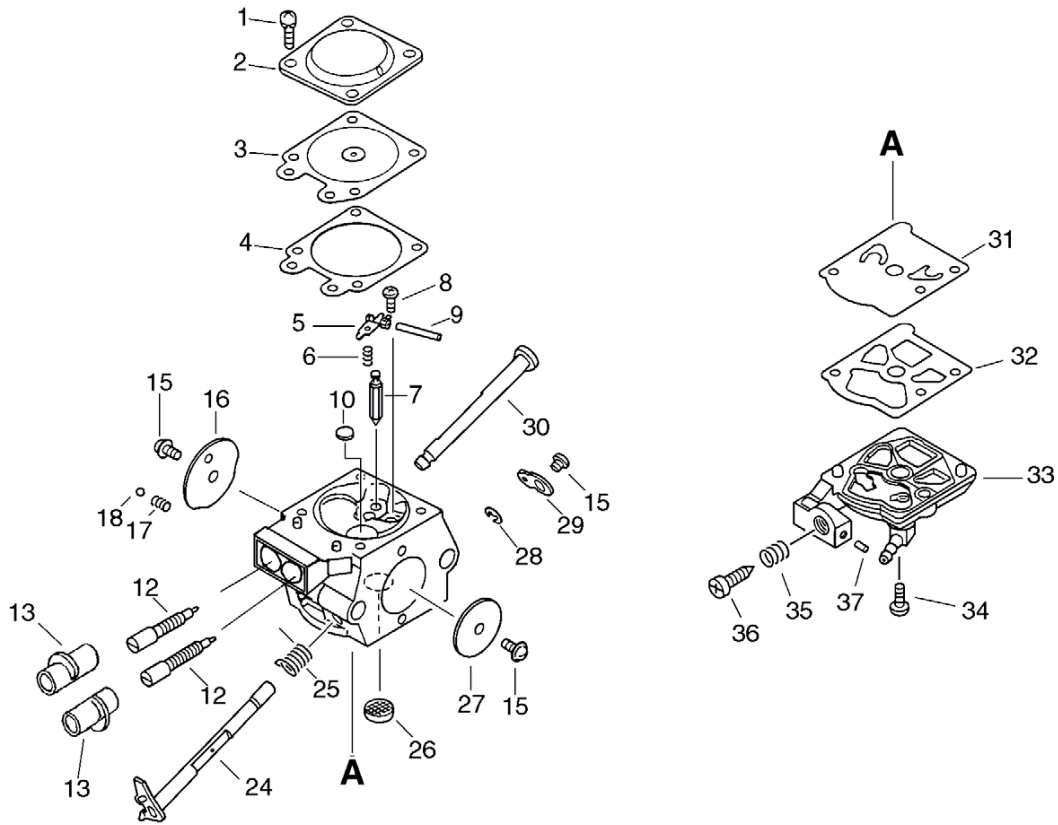
Key	Lv	Part Number	Q'ty	Description	Remarks	Note
35		175114-12530	1	SPROCKET, RIM .325	Sr/Nr 601000 and before	
36		175019-38330	1	PLATE, CLUTCH		
37		433310-38330	1	COVER, BRAKE		
38		900253-04010	2	SCREW 4*10		
39		433122-35430	1	SPRING, BRAKE		
40		433209-35430	1	STOPPER, BRAKE		
41		433115-38330	1	WASHER 5.2*12*14		
42		433208-35431	1	LEVER, BRAKE		
43		900330-40088	1	ROLLER 4*8.8		
44		433142-35430	1	ADJUSTER, BRAKE		
45		433123-35430	1	BAND, BRAKE		
46		900342-25012	1	PIN, SPRING 2.5*12		
47		880200-38330	1	BUMPER, SPIKED KIT		
48 +		900105-05012	2	BOLT, H.S. 5*12		
49		895410-02830	1	WRENCH, W/S. DRIVER		
50		895811-00130	1	DRIVER, SCREW 125		
51		890316-39130	1	LABEL, CAUTION	Sr/Nr 36008061 and before	
52		898548-14531	1	SCABBARD, CHAIN		
53 +		898568-14530	1	ROPE		
54		X502-000000	1	LABEL, ECHO		
55		898510-39130	1	BAG, TOOL		
61		P021-007060	1	CLUTCH ASY W/PLATE	Sr/Nr 612391 and after	
62 +		A552-000060	1	HUB,CLUTCH	Sr/Nr 612391 and after	
63 +		V451-000500	3	SPRING,TENSION	Sr/Nr 612391 and after	
64 +		P021-007050	1	CLUTCH SHOE SET	Sr/Nr 612391 and after	
65 +		175019-39430	1	PLATE, CLUTCH	Sr/Nr 612391 and after	
66		V304-000090	1	WASHER,CIRCULAR 6	Sr/Nr 36002761 and after	

Group:Chain Saws Model:CS-4400 Section:Carburetor (Sr/Nr 613855 and before)

No.7



No.8



Parts List

Date:24.11.2008 Page: 1

Group:Chain Saws Model:CS-4400 Section:Carburetor(Sr/Nr 36001001 and after)

Key	Lv	Part Number	Q'ty	Description	Remarks	Note
		123000-39333	1	CARBURETOR WT-416C		
1 +		123130-02960	4	SCREW		
2 +		123142-03930	1	COVER, M. DIAPHRAGM		
3 +		123141-03930	1	DIAPHRAGM, METERING		
4 +		123140-03930	1	GASKET, M. DIAPHRAGM		
5 +		123123-03930	1	LEVER, METERING		
6 +		123122-39330	1	SPRING, METER. LEVER		
7 +		123137-19830	1	VALVE, INLET NEEDLE		
8 +		123139-03930	1	SCREW, M. LEVER PIN		
9 +		123138-03930	1	PIN, METERING LEVER		
10 +		123146-10631	1	PLUG, WELCH		
12 +		123120-03661	2	NEEDLE, HIGH SPEED		
13 +		P003-000010	2	LIMITER CAP		
15 +		123114-38830	3	SCREW		
16 +		123132-37330	1	VALVE, CHOKE		
17 +		123135-10630	1	SPRING, CHOKE FRICT.		
18 +		123136-10630	1	BALL, CHOKE FRICTION		
24 +		123117-39330	1	SHAFT, THROTTLE		
25 +		123113-37530	1	SPRING, THROTTLE RTN		
26 +		123126-10631	1	SCREEN, INLET		
27 +		123116-10530	1	VALVE, THROTTLE		
28 +		123127-15030	1	RING		
29 +		123150-38330	1	LEVER, THROTTLE		
30 +		123131-35430	1	SHAFT, CHOKE		
31 +		123112-15030	1	DIAPHRAGM, FUEL PUMP		
32 +		123125-15030	1	GASKET, FUEL PUMP		
33 +		123124-38330	1	COVER, FUEL PUMP		
34 +		123110-03930	1	SCREW, PUMP COVER		

