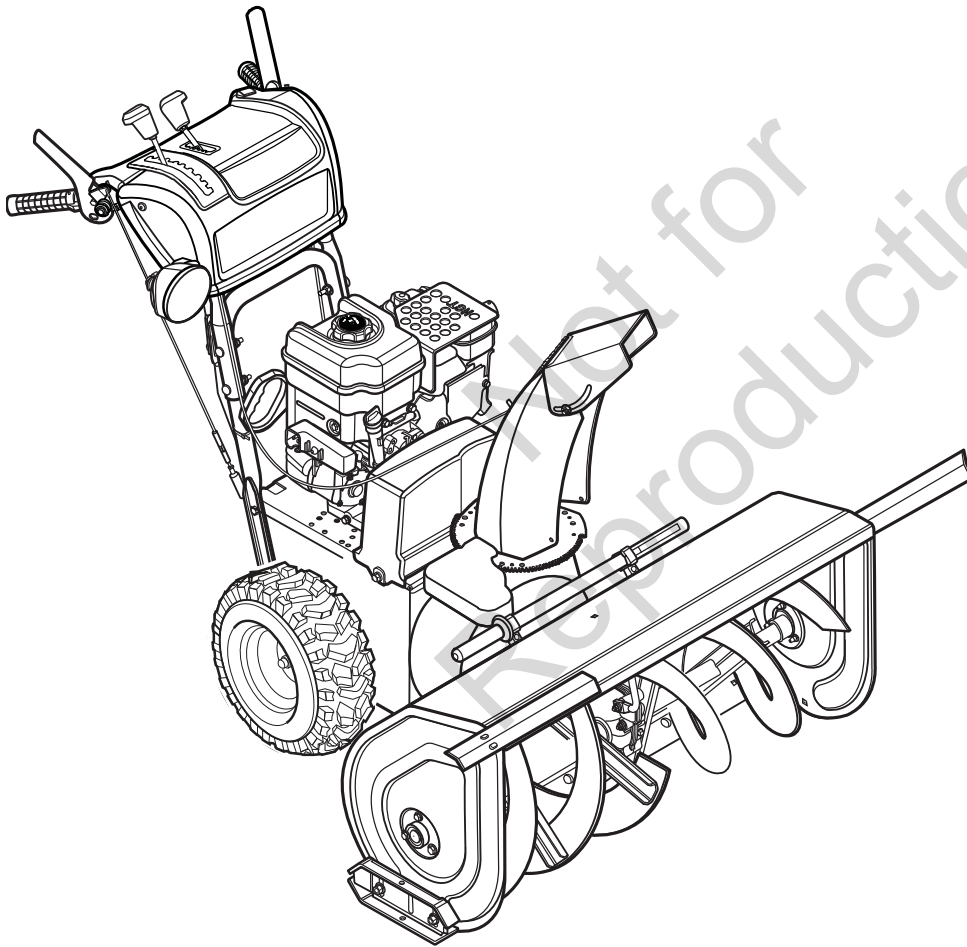


Parts Manual for
SNAPPER®

**32" & 38" LARGE FRAME
TWO-STAGE SNOW THROWERS
(2010)**

<i>Model No.</i>	<i>Description</i>
1695856	P1732EX
1695850	XL1738E

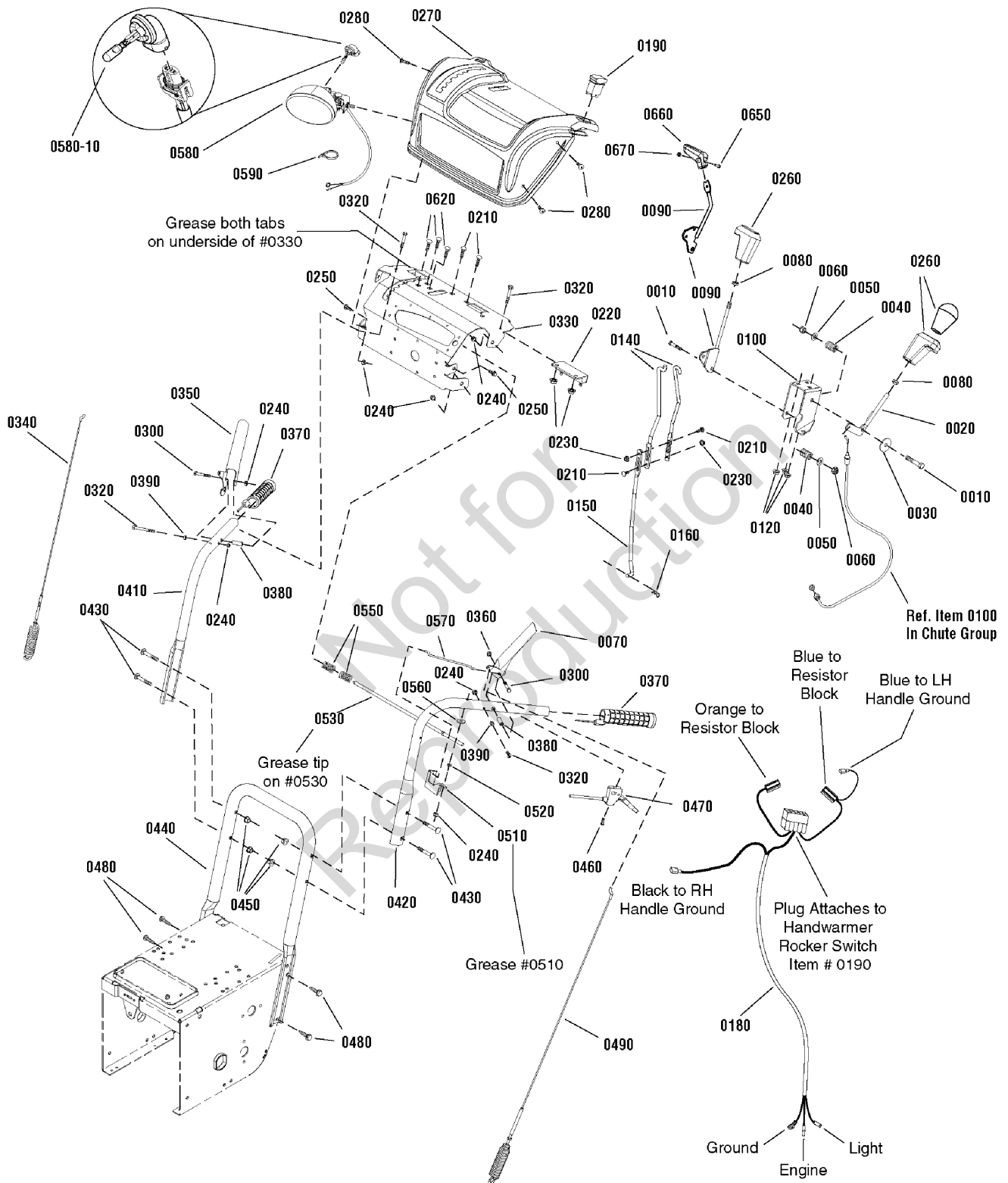


Not for
Reproduction

PAGE	GROUP
4	Handles & Controls Group
8	Auger Housing Group
10	Auger Drive Group - Heavy Duty
12	Gear Case Assembly - Heavy Duty
14	Chute & Rotation Group
16	Engine & Frame Group
20	Traction Drive Group
24	Decals Group
26	Wheels & Tires Group

Not for
Reproduction

Handles & Controls Group



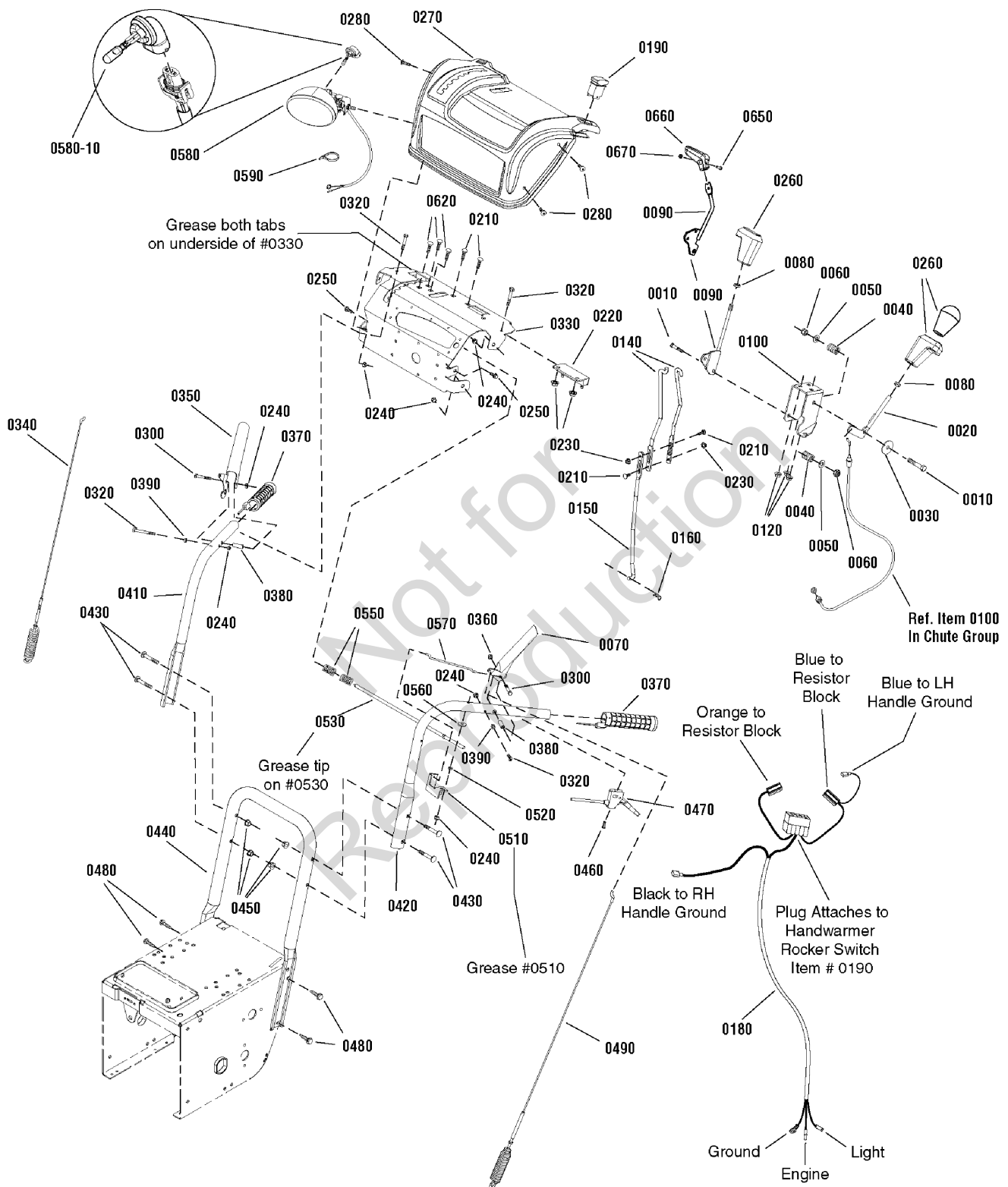
Handles & Controls Group

Item	Part No	Qty	Description
0010	1923701	2	CAPSCREW, Hex Head, 3/8-16 x 2, G5
0020	1732427	1	ROD, Chute
0030	1924356	1	WASHER, 3/8
0040	724361	2	SPRING, 3/4"
0050	1918266	2	WASHER, 3/8
0060	1919439	2	NUT, Hex Lock, ESNA Light, 3/8-16
0070	1739782BM	1	LEVER, Clutch, LH
0080	1917421	2	NUT, Hex Jam, 3/8-16
0090	1735644	1	SHIFT LEVER ASSEMBLY (38" Models Only)
0090	1736836	1	SHIFT LEVER ASSEMBLY (32" Models Only)
0100	1737684	1	BRACKET, Controls
0120	1931277	3	NUT, Hex Flange, Whiz Lock, 5/16-18
0140	1735647	1	ROD, Shift Linkage, Upper (38" Models Only)
0140	1750635	1	ROD, Shift Linkage, Upper (32" Models Only)
0150	1666255	1	ROD, Shift
0160	1722460	1	PIN, Quick
0180	1735652	1	HARNESS, Wiring
0190	1732563	1	SWITCH, Rocker, Hand Warmer
0210	1931317	3	BOLT, Carriage, Short Neck, 1/4-20 x 3/4, G5
0220	1724037	1	RESISTOR BLOCK
0230	1960685	3	NUT, Hex KEPS, Conical Washer, 1/4-20
0240	1920397	8	NUT, Hex Lock, ESNA Light, 1/4-20
0250	1927429	2	CAPSCREW, Hex Washer Head, Taptite, 1/4-20 x 5/8
0260	1732470	1	KNOB, Internal Thread, 3/8-16 (32" Models Only)
0260	723073	2	GRIP, Lever, 3/8-16 (38" Models Only)
0270	1735642D	1	COVER, Panel
0280	1960715	4	SCREW, Truss Head Torx, 1/4-20 x 3/4
0300	1750554	2	SCREW, Hex Washer Head, Shoulder, 10-24
0320	1921962	4	CAPSCREW, Hex Head, 1/4-20 x 1-3/4, G5
0330	1732064BM	1	COVER, Dash
0340	1735643	1	CABLE & SPRING ASSEMBLY, Auger Drive, RH
0350	1739783BM	1	LEVER, Clutch, RH
0360	1933896	2	NUT, Hex Lock, Nylon Insert, 10-24
0370	1723965	2	HAND GRIP, Heated
0380	1736542	2	SPACER, Stepped
0390	1678392	2	SPACER, 1/4 ID x 3/8 OD x .33"
0410	1734587BM	1	HANDLE, Upper, RH
0420	1734586BM	1	HANDLE, Upper, LH
0430	1960723	4	BOLT, Carriage, Short Neck, 5/16-18 x 2-1/4, G5
0440	1735641BM	1	HANDLE, Lower
0450	1960686	4	NUT, Hex Flange, ESNA, 5/16-18
0460	1725702	1	SCREW, Pan Head Torx, #10 x 1/2
0470	1718791	1	CABLE & HANDLE ASSEMBLY
0480	1921333	4	CAPSCREW, Hex-Head, 5/16-18 x 1, G5
0490	1735646	1	CABLE & SPRING ASSEMBLY, Auger Drive

Footnotes:

Note* See your local hardware store for replacement bulbs.

Handles & Controls Group



Handles & Controls Group

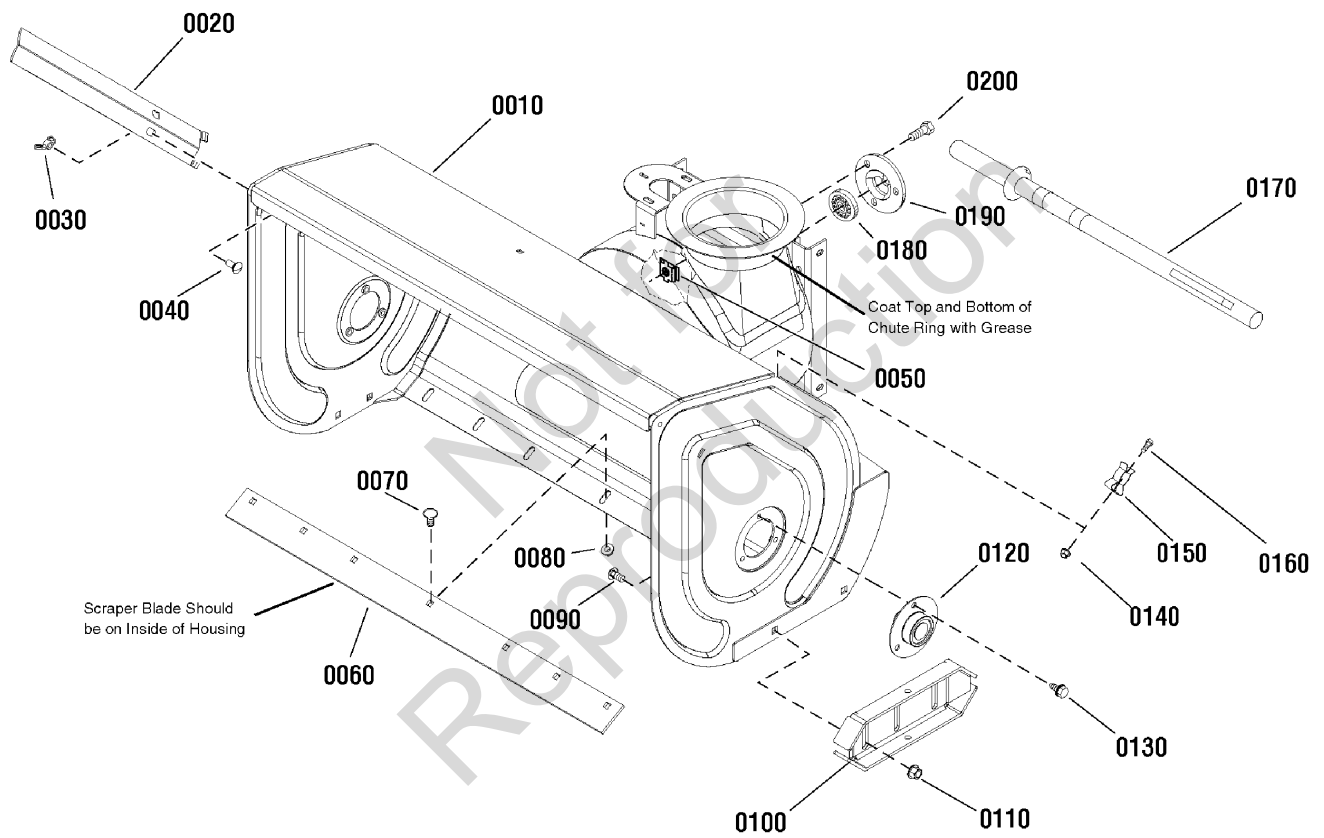
Item	Part No	Qty	Description
0530	1733509	1	ROD & SPRING ASSEMBLY
0550	2108360	2	SPRING, Compression, 2-1/4"
0560	1960353	1	WASHER, 1/4
0570	1736360	1	ROD, Hold Down
0580	1737966	1	HEADLIGHT, Oval
0580-10	1737966	1	* BULB, Headlight, Halogen, 881-12V 27W (Included with Ref. No. 0580)
0590	2825094	5	TIE, Self Locking
0620	723873	3	BOLT, Carriage, 5/16-18 x 3/4
0650	1960589	1	SCREW, Round Head Phillips, #10-24 x 3/4 (32" Models Only)
0660	1733192	1	KNOB, Slot Speed (32" Models Only)
0670	1933896	1	NUT, Hex Lock, Nylon Insert, 10-24

Not for
Reproduction

Footnotes:

Note* See your local hardware store for replacement bulbs.

Auger Housing Group



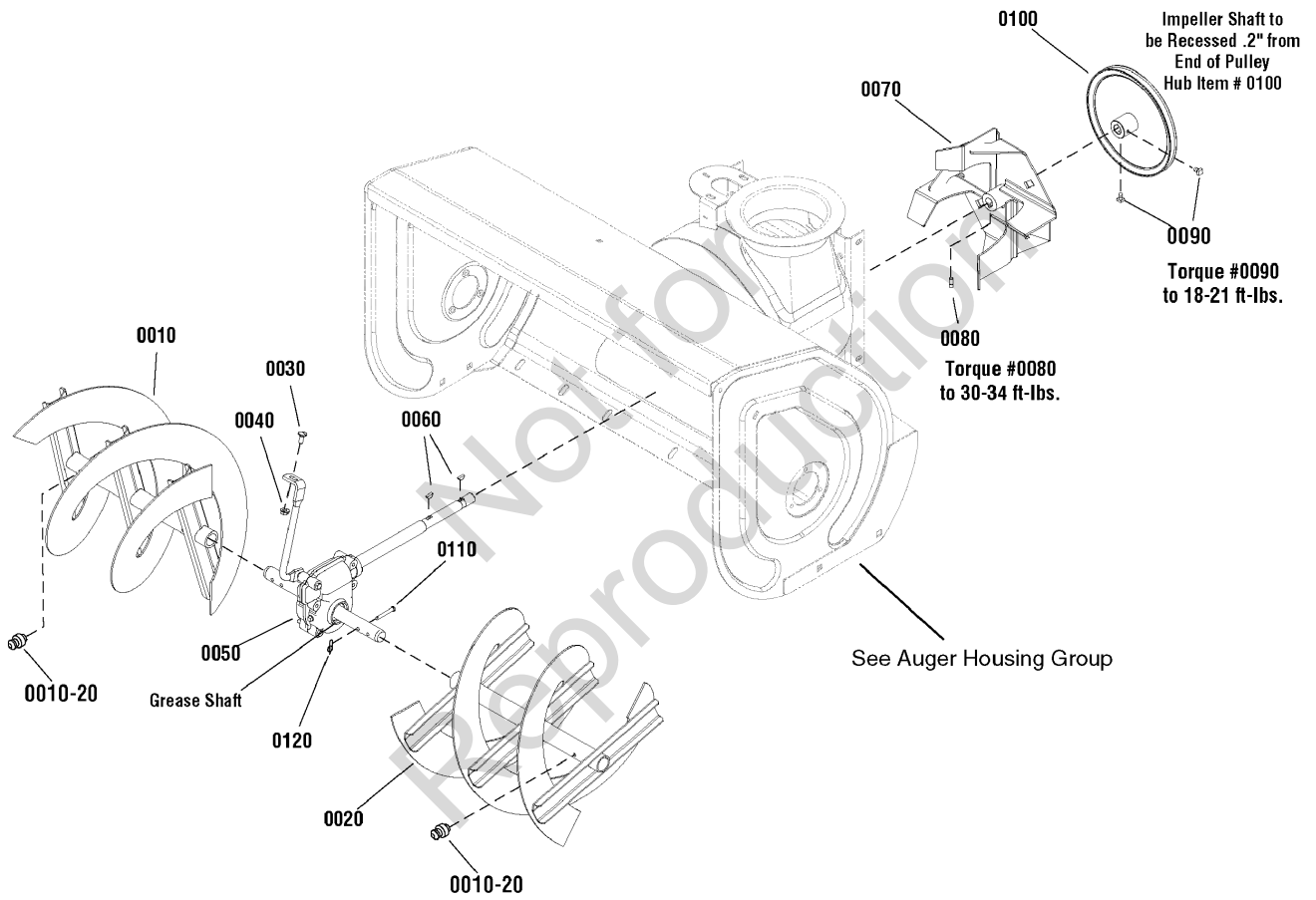
Auger Housing Group

Item	Part No	Qty	Description
0010	1739256D	1	AUGER HOUSING, 32"
0010	1737700D	1	AUGER HOUSING, 38"
0020	1733102BM	2	DRIFT CUTTER
0030	725347	2	NUT, Wing, Serrated, 5/16-18
0040	723873	2	BOLT, Carriage, 5/16-18 x 3/4
0050	1930659	3	RETAINER, Nut, 5/16-18
0060	1709948BM	1	BLADE, Scraper, 32"
0060	1723921BM	1	BLADE, Scraper, 38"
0070	1960699	9	BOLT, Carriage, 5/16-18 x 5/8, G5
0080	1935048	9	NUT, Hex Flange, Two Way Lock, 5/16-18
0090	1960702	4	BOLT, Carriage, 3/8-16 x 1, G5
0100	1725747BM	2	SHOE, Skid
0110	1960687	4	NUT, Hex Flange, 3/8-16, ESNA
0120	1734645	2	BEARING, Ball
0130	1664847	6	SCREW, Hex Washer Head, Taptite, 5/16-18 x 3/4
0140	722401	2	NUT, Nylock, 10 x 24
0150	1736620	2	Clip, Retainer
0160	1960569	2	SCREW, Truss Head Torx, #10-24 x 3/8
0170	1736094	1	BRUSH, Cleanout
0180	2108202	1	BEARING, Ball
0190	1665982	1	RETAINER, Ball Bearing
0200	1960738	3	SCREW, Hex Flange, Whiz Lock, 5/16-18 x 3/4

Not for
Reproduction

Footnotes:

Auger Drive Group - Heavy Duty



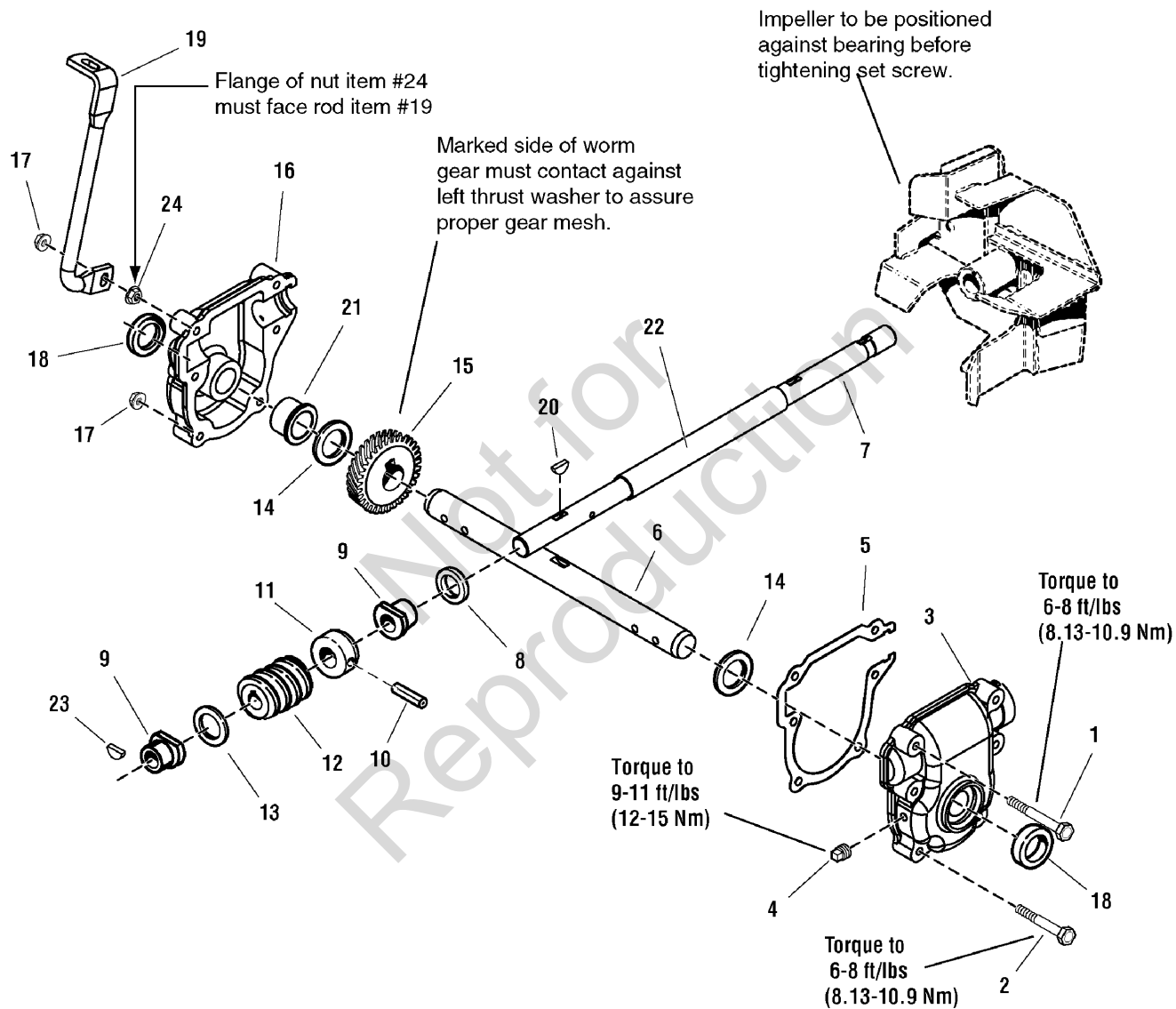
Auger Drive Group - Heavy Duty

Item	Part No	Qty	Description
0010	1734678BM	1	AUGER ASSEMBLY, 32", R.H.
0010	1734680BM	1	AUGER ASSEMBLY, 38", R.H.
0020	1734677BM	1	AUGER ASSEMBLY, 32", L.H.
0020	1734679BM	1	AUGER ASSEMBLY, 38", L.H.
0010-20	2821133	2	FITTING, Zerk (R.H. & L.H. - All Augers)
0030	1931333	1	BOLT, Carriage, 5/16-18 x 3/4, G5
0040	1931277	1	NUT, Hex Flange, Whiz Lock, 5/16-18
0050	1732303	1	GEAR CASE ASSEMBLY, Heavy Duty
0060	2818312	2	KEY, Woodruff
0070	1612187BM	1	IMPELLER
0080	1960474	1	SCREW, Set, 3/8-16 x 1/2, G8
0090	1928721	2	SCREW, Set, 5/16-18 x 1/2, G8
0100	1732468	1	PULLEY, 9 OD, 3/4 ID
0110	1668344	2	PIN, Shear, 1-3/4
0120	7023590	2	PIN, Cotter

Not for
Reproduction

Footnotes:

Gear Case Assembly - Heavy Duty



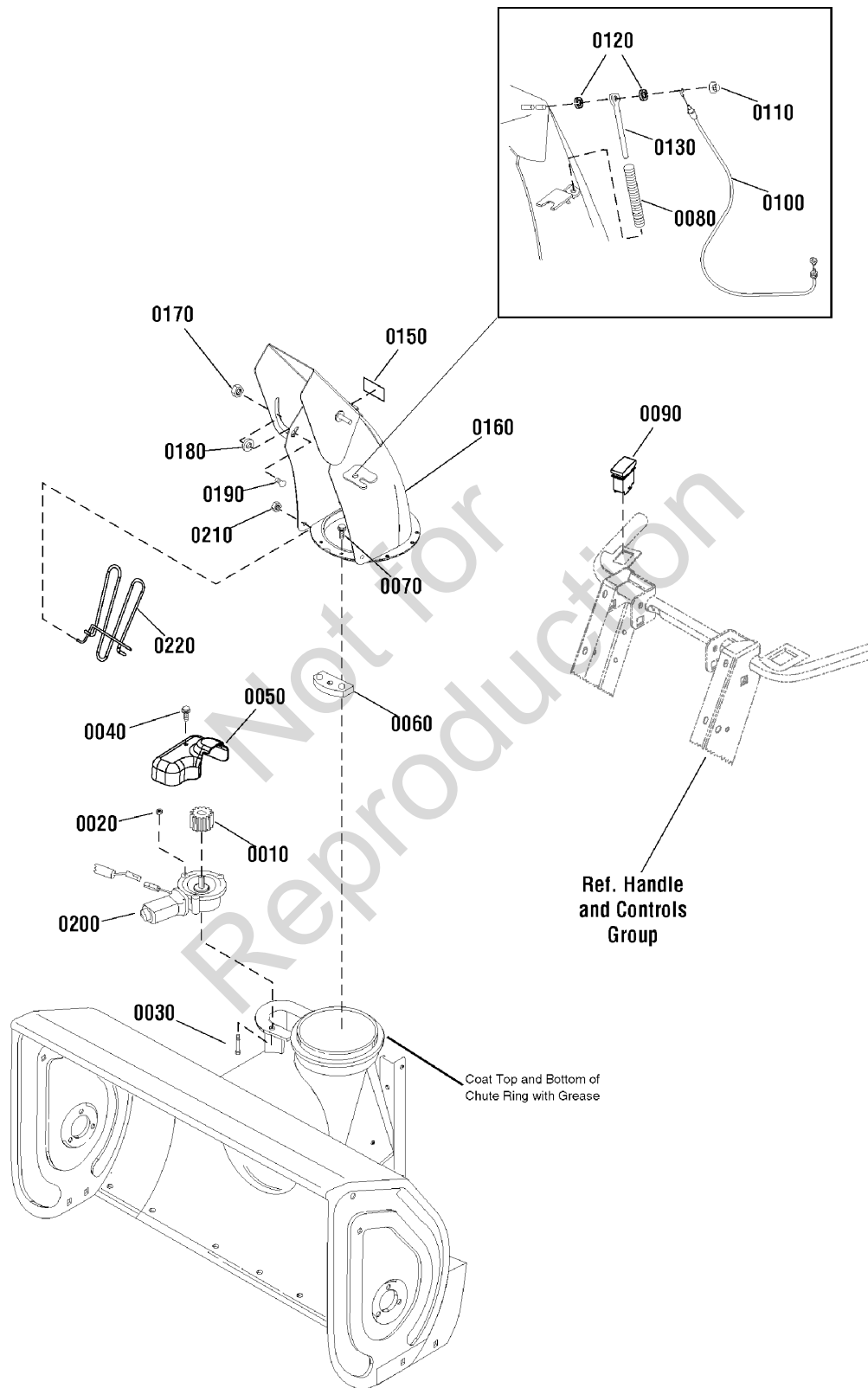
Gear Case Assembly - Heavy Duty

Item	Part No	Qty	Description
1	1926105	1	CAPSCREW, 1/4-20 x 2-3/4
2	1960346	5	CAPSCREW, 1/4-20 x 2-1/4
3	1734218	1	GEAR CASE, L.H.
4	1668971	1	TAPERED PIPE PLUG
5	1612124	1	GASKET
6	1732440	1	SHAFT, Auger Cutoff
7	1732182	1	SHAFT, Worm Cutoff
8	1612093	1	SEAL, Oil
9	1612149	2	FLANGE BUSHING
10	2836098	1	PIN, Drive Lock
11	1612127	1	THRUST COLLAR
12	1612142	1	ROLLED WORM CASE
13	2168111	1	THRUST WASHER
14	2118315	2	THRUST WASHER
15	1612141	1	GEAR, Worm
16	1734219	1	GEAR CASE, R.H.
17	1930642	6	NUT, Top Lock Flange, 1/4-20
18	2118118	1	SEAL
19	1732152	1	WIREFORM BRACKET
20	2818312	1	KEY, Woodruff, .18 x .62
21	1732991	2	BUSHING
22	1612111	1	TUBE
23	2830246	1	KEY, Woodruff, 1/4 x 3/4
24	1960294	1	NUT, Hex-Flange, 1/4-20

Not for
Reproduction

Footnotes:

Chute & Rotation Group



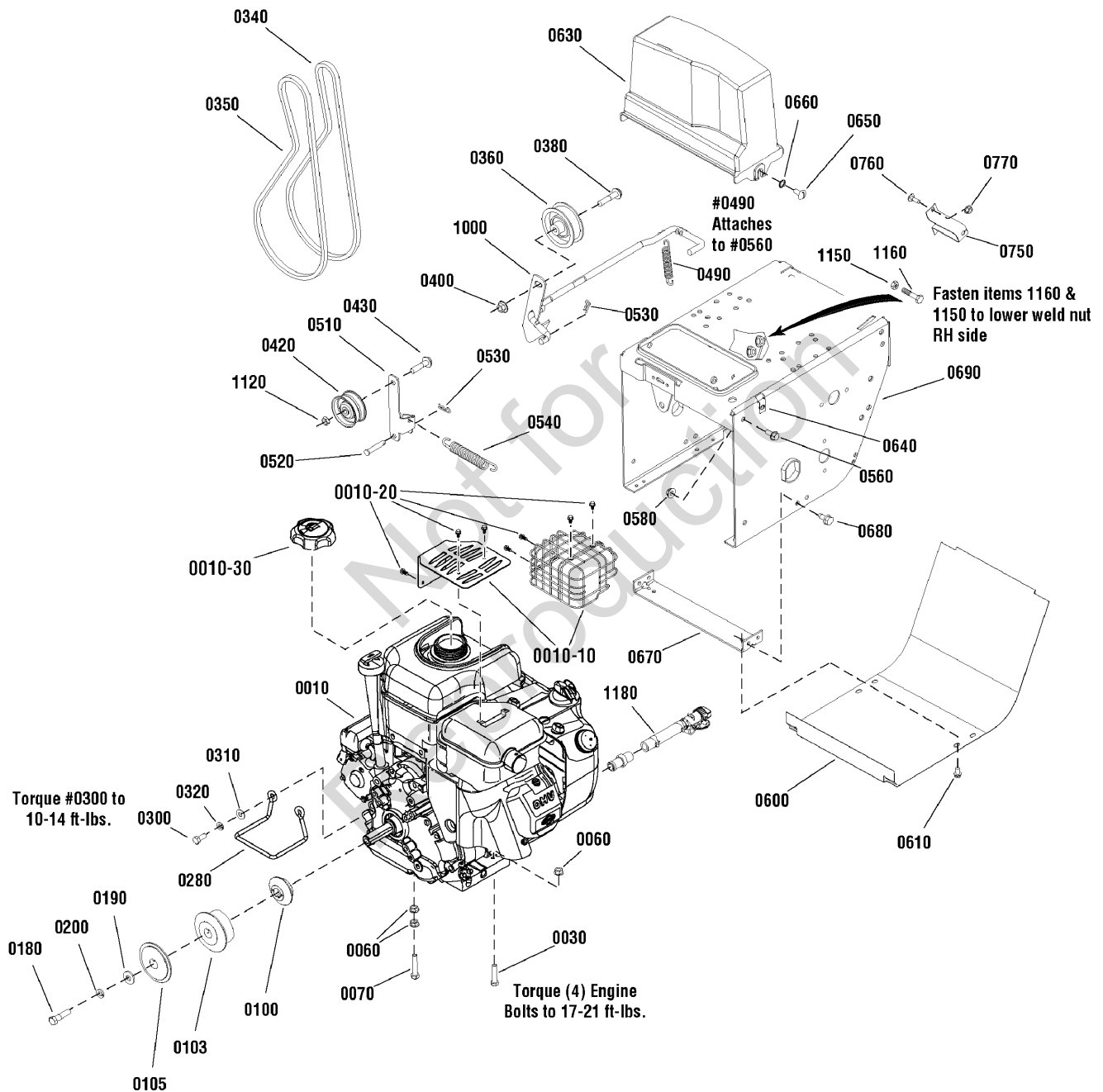
Chute & Rotation Group

Item	Part No	Qty	Description
0010	1728967	1	PINION
0020	1960745	3	NUT, Hex Flange, Whiz Lock, #10-24
0030	2860604	3	SCREW, Hex Washer Head, Slot, #10C x 1-1/4
0040	1927428	1	CAPSCREW, Hex Washer Head, Taptite, 1/4-20 x 3/8
0050	1733934A	1	COVER, Gear
0060	1666613	3	HOLD DOWN
0070	1960001	3	SCREW, Hex Washer Head, Plastite, 10-14 x 5/8
0080	1734647	1	SPRING, Compression, 6"
0090	1728969	1	SWITCH, Rocker, Chute Rotation
0100	1732971	1	CABLE, Deflector Control
0110	1932718	1	NUT, Push, For 5/16 Stud
0120	1666697	2	SPACER, 5/16 ID x 1/2 OD x 1/4"
0130	1734708A	1	ROD, Spring Guide
0140	2825094	1	TIE, Self Locking
0150	1738340	2	DECAL, Hinge
0160	1734400D	1	CHUTE
0170	1960686	1	NUT, Hex Flange, ESNA, 5/16-18
0180	2860210	1	WASHER, Nylon, 3/8
0190	1931333	1	BOLT, Carriage, Short Neck, 5/16-18 x 3/4, G5
0200	1728965	1	MOTOR, Spout Rotator
0210	1960126	2	NUT, Push Pal, For 1/4 Stud
0220	1735174	1	CHUTE GUARD ASSEMBLY

Not for
Reproduction

Footnotes:

Engine & Frame Group



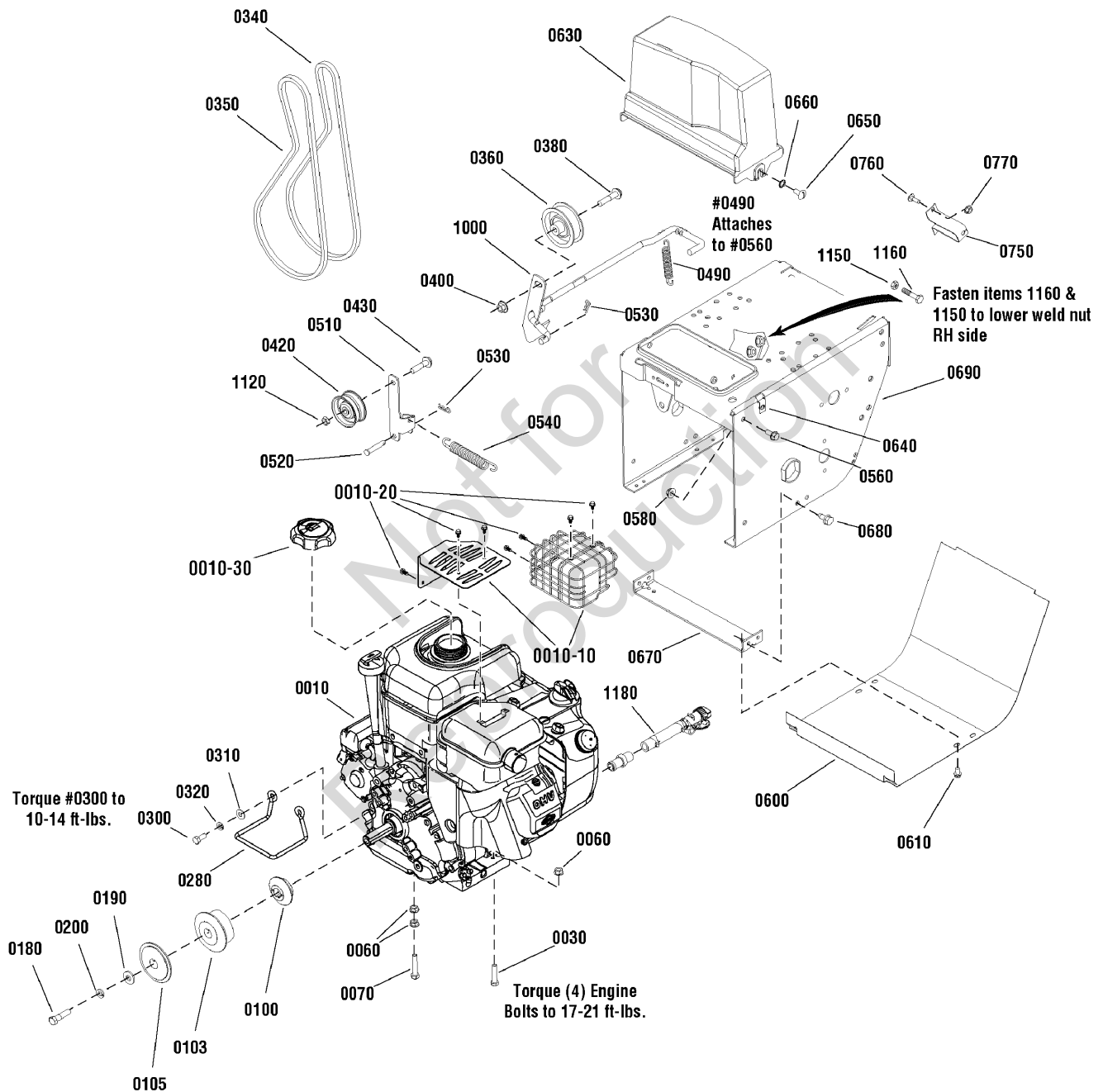
Engine & Frame Group

Item	Part No	Qty	Description
0010	21M314-0122-E1	1	* ENGINE, 16.5TP Briggs & Stratton (Engine Model: 21M314-0122-E1) (Domestic)
0010	21M314-0119-E1	1	* ENGINE, 16.5TP Briggs & Stratton (Engine Model: 21M314-0119-E1) (CE/Export)
0010-10	797095	1	* GUARD, Muffler, Plate (Domestic Models Only)
0010-10	796384	1	* GUARD, Muffler, Cage (Export Models Only)
0010-20	699234	3	* SCREW, Muffler Guard (Export Models Only)
0010-30	795027	1	* CAP, Fuel
0030	1921221	3	CAPSCREW, Hex-Head, 5/16-18 x 1-1/2, G5
0060	2831277	5	NUT, Hex Flange, Whiz Lock, 5/16-18
0070	2822127	1	CAPSCREW, Hex-Head, 5/16-18 x 1-3/4, G5
0100	1726865	1	PULLEY, Engine, Inside
0103	1726866	1	PULLEY, Engine Middle
0105	1726867	1	PULLEY, Engine Outside
0180	1922128	1	CAPSCREW, Hex Head, 3/8-24 x 1-1/2, G8
0190	1922755	1	WASHER, 3/8
0200	1916965	1	LOCKWASHER, Spring, 3/8
0280	1727785	1	STOP, Belt
0300	1921515	2	CAPSCREW, Hex Head, 5/16-24 x 3/4, G5
0310	1919326	2	WASHER, 5/16
0320	1917356	2	LOCKWASHER, Spring, 5/16
0340	1666655	1	V-BELT, HA, 41.3, Auger
0350	1672732	1	V-BELT, 3L, 31.00, Drive
0360	1726348	1	PULLEY, Idler, 2-3/4
0380	2860709	1	CAPSCREW, Hex Flange, Whiz Lock, 3/8-16 x 1-3/4
0400	1928352	1	NUT, Hex Flange, Whiz Lock, 3/8-16
0420	1668477	1	PULLEY, Idler, 2-1/4
0430	1960647	1	CAPSCREW, Hex Head, 3/8-16 x 1-1/2
0490	2159106	1	SPRING, Extension, 4-1/4
0510	1703046A	1	ARM, Idler
0520	1665994	1	PIN, Flat Head Drilled
0530	1722460	2	PIN, Quick
0540	1727149	1	SPRING, Extension, 5-3/4
0560	1930591	4	CAPSCREW, Hex Flange, Whiz Lock, 5/16-18 x 3/4
0580	1927557	4	NUT, Hex Flange, Whiz Lock, 5/16-18
0600	1726870D	1	COVER, Bottom
0610	1925003	2	CAPSCREW, Hex Washer Head, Taptite, 1/4-20 x 1/2
0630	1725287	1	COVER, Belt
0640	1935255	2	NUT, Speed, Lug Type, 5/16-18
0650	1918249	2	SCREW, Truss Head Slotted, 5/16-18 x 3/4
0660	2820426	2	LOCKWASHER, External Tooth, 5/16
0670	1727004A	1	SUPPORT, Tie Bar
0680	1664847	4	CAPSCREW, Hex Washer Head, Taptite, 5/16-18 x 3/4
0690	1726568D	1	FRAME
0750	1720404A	1	SUPPORT, Clutch Cable
0760	1931317	2	BOLT, Carriage, Short Neck, 1/4-20 x 3/4, G5

Footnotes:

NOTE: * Purchase engine parts from engine manufacturer dealer.

Engine & Frame Group



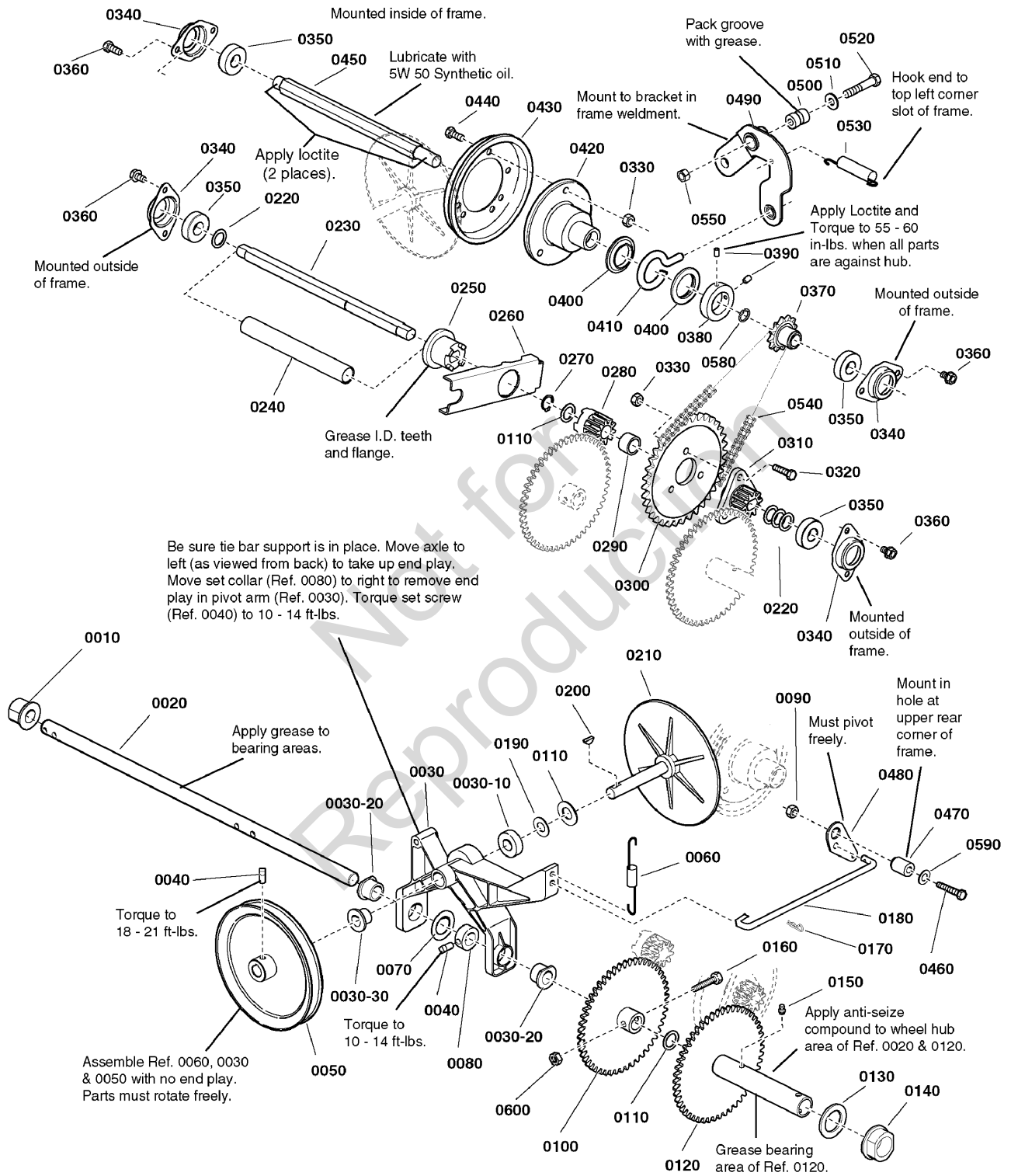
Engine & Frame Group

Item	Part No	Qty	Description
0770	1960685	2	NUT, Hex KEPS, Conical Washer, 1/4-20
1000	1729646A	1	CLUTCH ROD / BRAKE ARM
1120	1928731	1	NUT, Hex Toplock Jam, 3/8-16
1150	1920161	1	NUT, Hex Jam, 5/16-18
1160	1921333	1	CAPSCREW, Hex-Head, 5/16-18 x 1, G5
1180	798980	1	* OIL DRAIN ASSEMBLY

Not for
Reproduction

Footnotes:

NOTE: * Purchase engine parts from engine manufacturer dealer.

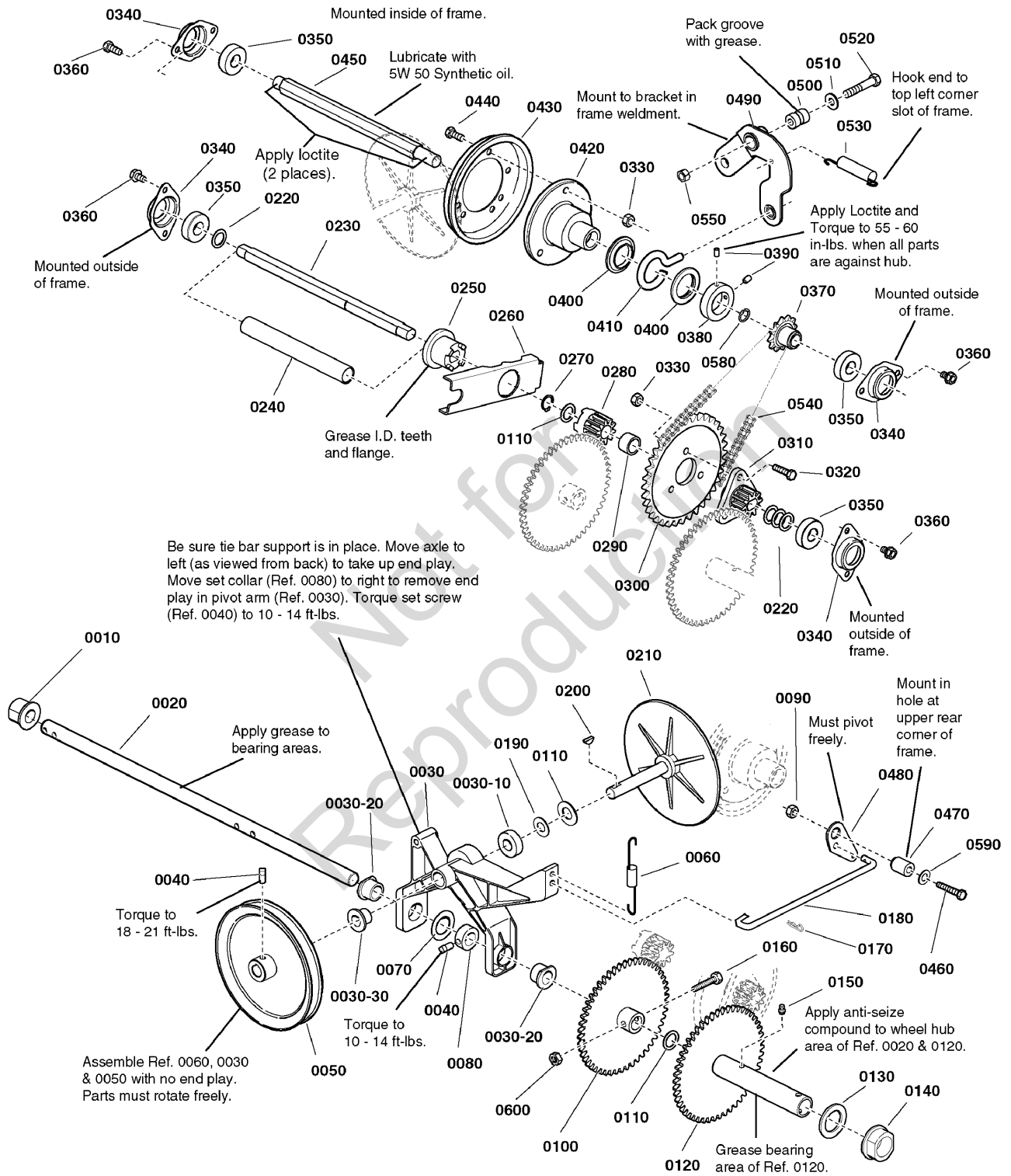


Traction Drive Group

Item	Part No	Qty	Description
0010	1666001	1	BUSHING, 1" Lg
0020	1736641	1	AXLE, 22-13/16 Lg
0030	1670849	1	ARM & PIVOT ASSEMBLY
0030-10	1665521	1	BEARING
0030-20	1666425	2	BUSHING, Flange
0030-30	1666855	1	BUSHING
0040	1928721	2	SET SCREW, 5/16-18 x 1/2, G8
0050	1672595	1	PULLEY ASSEMBLY
0060	1725666	1	SPRING, Extension, 1/2 OD
0070	1919394	1	WASHER, 1-1/32 x 1-5/8 OD
0080	1729254	1	COLLAR, Set, 1/4 X 1-1/4 x 1/2
0090	1960686	1	NUT, Hex-Flange, 5/16-18
0100	1736639	1	GEAR ASSEMBLY
0110	1960114	3	WASHER, 3/4
0120	1730228	1	GEAR & HUB ASSEMBLY
0130	2860169	1	WASHER, 3/16
0140	1720305	1	BUSHING, 5/32
0150	7076998	1	Fitting, Lube, Straight, 1/4-28
0160	51374	2	SCREW, Hex-Head, 1/4-20 x 1-1/2
0170	1722460	1	PIN, Quick, 1-3/16 Lg
0180	1726467	1	ROD, 9-1/2 Lg
0190	1924366	1	WASHER, 5/8
0200	2818312	1	KEY, Woodruff, 3/16 x 5/8, #61
0210	1719879	1	DISC, Drive, w/ Spindle
0220	2860164	4	WASHER, 5/8
0230	1718752	1	JACKSHAFT
0240	1720298	1	SPRING, Compression
0250	1718689	1	CLUTCH, Sliding, 1-1/2 OD
0260	1720078A	1	ARM, Clutch
0270	2827732	1	RING, Retaining, # 74, 3/4 Dia.
0280	1718688	1	GEAR, Stationary Clut
0290	1679556	1	SPACER, 1 Lg
0300	1667330	1	SPROCKET
0310	1718687	1	GEAR
0320	1921333	3	CAPSCREW, Hex-Head, 5/16-18 x 1, G5
0330	1960684	6	NUT, Hex, 5/16-18 Conical Washer
0340	1667341	4	RETAINER, Bearing
0350	1705897	4	BEARING, Ball, 11/16 x 1-9/16 X 15/32
0360	1930601	8	SCREW, Hex Washer-Head, 5/16-18 x 5/8
0370	1726931	1	SPROCKET
0380	1667335	1	COLLAR, 1-1/4 x 2 x 1/2
0390	1724333	2	SET SCREW, 1/4-20 x 1/2
0400	1678956	2	COLLAR, Thrust, 1-1/4 ID x 2 OD
0410	1666207	1	PIN, LOOP 3/8 Dia. X 2-3/32 Lg

Footnotes:

Traction Drive Group

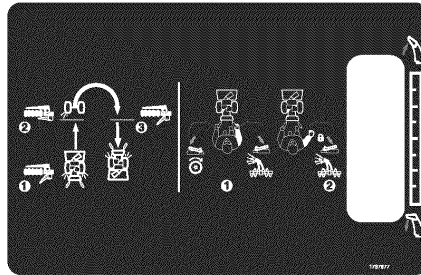
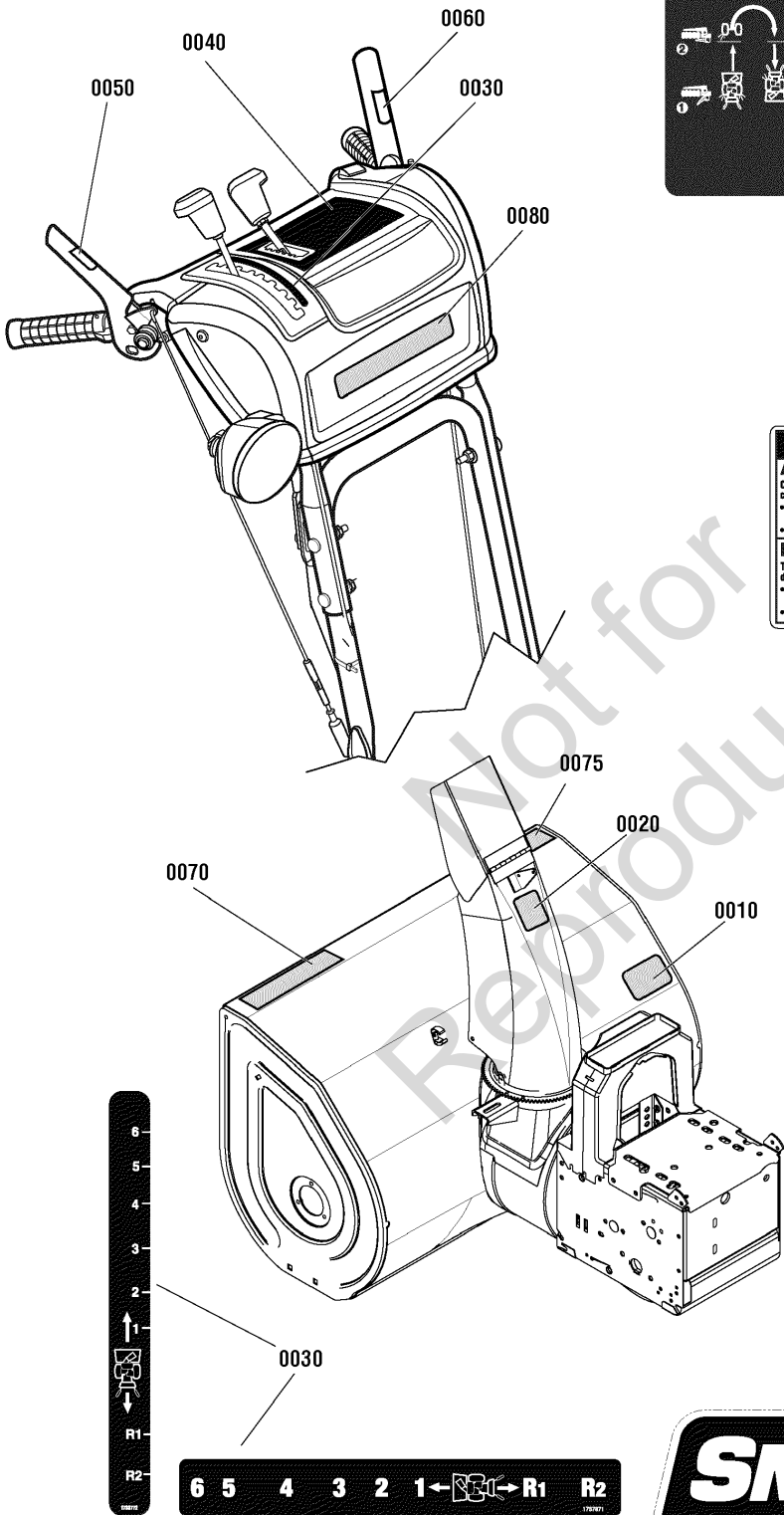


Traction Drive Group

Item	Part No	Qty	Description
0420	1665995	1	HUB, Friction Disc
0430	1725428	1	DISC, Friction
0440	1921332	3	CAPSCREW, Hex-Head, 5/16-18 x 3/4, G5
0450	1736100	1	SHAFT, Hex, w/Groove, 3/4 A/F, 12-11/32 Lg
0460	1735776	1	CAPSCREW, Hex Socket-Head, 5/16-18 x 2, G8
0470	1666106	1	BUSHING, 11/32 ID 3/4 OD 1-1/16 Lg
0480	1700473	1	BELLCRANK
0490	1669256	1	SHIFT ARM & PULLEY ASSEMBLY
0500	1666114	1	BUSHING
0510	1924940	1	WASHER, 3/8
0520	1923701	1	CAPSCREW, Hex Head, 3/8-16 x 2, G5
0530	1668255	1	SPRING, Extension
0540	1666980	1	CHAIN, Roller
0550	1960687	1	NUT, Hex-Flange, 3/8-16
0580	1736222	1	RING, Retaining, Split, # 79
0590	1919326	1	WASHER, 11/32 x 3/4 OD
0600	95661	2	NUT, Hex, Nylock, 1/4-20

Not for
Reproduction

Footnotes:



0040



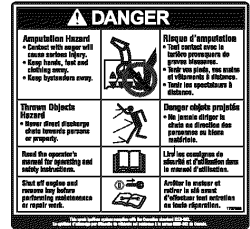
0050



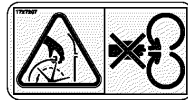
0060



0020



0010



0070



0075



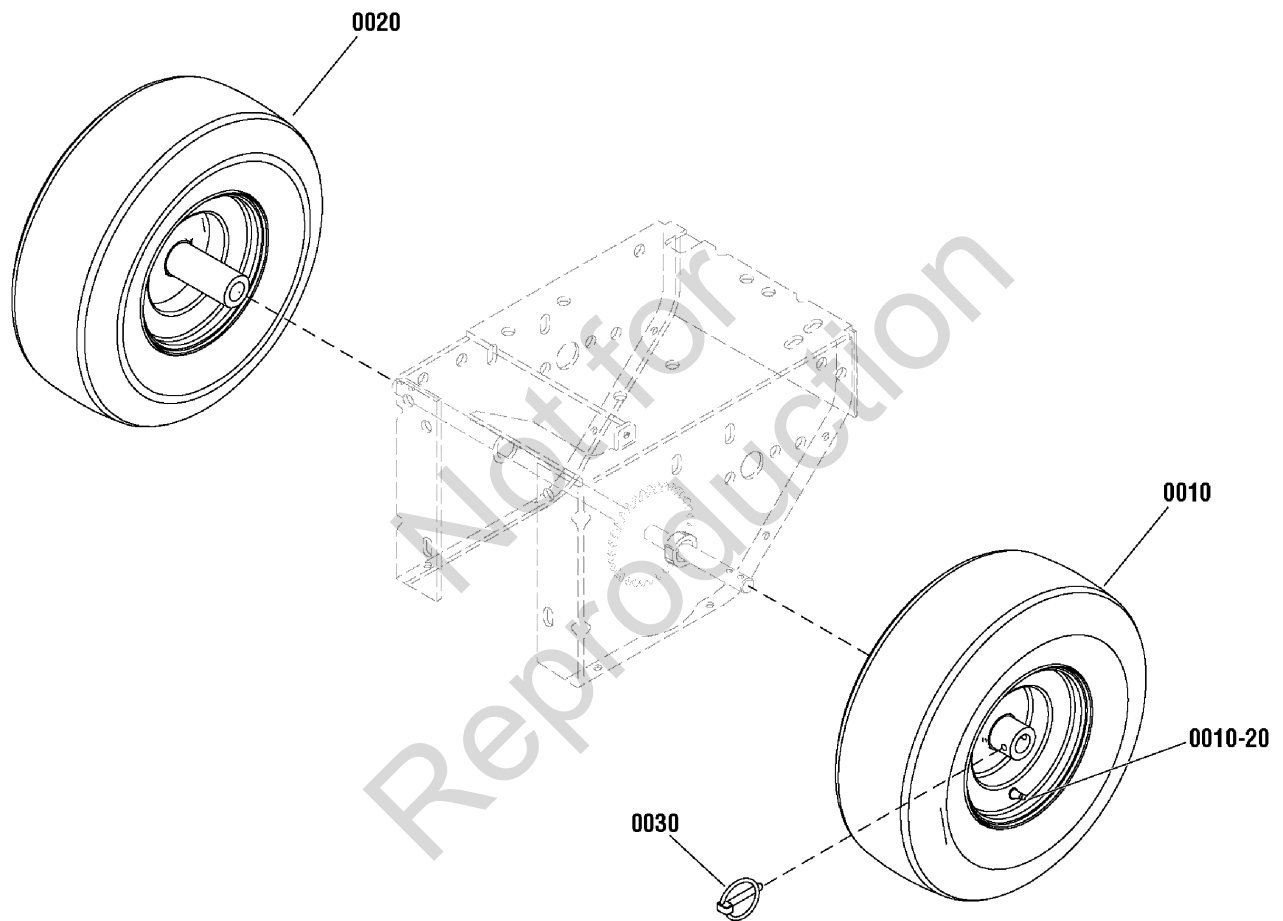
0080

Decals Group

Item	Part No	Qty	Description
0010	1737867	1	DECAL, Danger Auger Icons (CE/Export)
0010	1737866	1	DECAL, Danger, Foot (Domestic)
0020	1737865	1	DECAL, Chute Warning (Domestic)
0020	1727207	1	DECAL, Chute Warning (CE/Export)
0030	1733772	1	DECAL, Shift, 1,2,3,4,5,6 R1 R2 (CE/Export)
0030	1737871	1	DECAL, Shift, 1-6 (Domestic)
0040	1737877	1	DECAL, Controls No Text
0050	1737869	1	DECAL, Auger Control Symbols
0060	1737870	1	DECAL, Traction Control Symbols
0070	1750420	1	DECAL, Housing, 32"
0070	1750415	1	DECAL, Housing, 38"
0075	1750913	1	DECAL, Logo, Snapper
0080	1750411	1	DECAL, Logo, Snapper

Not for
Reproduction

Footnotes:



Wheels & Tires Group

Item	Part No	Qty	Description
0010	1750361	1	WHEEL & TIRE ASSEMBLY, K467, 16 x 6.5, LH (Includes Ref. No. 0010-20)
0020	1750360	1	WHEEL & TIRE ASSEMBLY, K467, 16 x 6.5, RH (Includes Ref. No. 0010-20)
0010-20	2172353	2	VALVE STEM & CAP
0030	1731186	2	PIN, Klik

Not for
Reproduction

Footnotes:

Hardware Identification & Torque Specifications

Torque Specification Chart								
FOR STANDARD METRIC MACHINE HARDWARE (Tolerance ± 20%)								
Property Class	5.6		8.8		10.9		12.9	
	Class 5.6		Class 8.8		Class 10.9		Class 12.9	
Size Of Hardware	in/lbs		in/lbs		in/lbs		in/lbs	
	ft/lbs	Nm.	ft/lbs	Nm.	ft/lbs	Nm.	ft/lbs	Nm.
M3	5.88	.56	13.44	1.28	19.2	1.80	22.92	2.15
M4	13.44	1.28	30.72	2.90	43.44	4.10	52.56	4.95
M5	26.4	2.50	60.96	5.75	5.97	8.10	7.15	9.7
M6	44.64	4.3	7.3	9.9	10.3	14	12.1	16.5
M7	5.2	7.1	12.1	16.5	16.9	23	19.9	27
M8	7.7	10.5	17.7	24	25	34	29	40
M10	15	21	35	48	50	67	59	81
M12	26	36	61	83	86.2	117	103	140
M14	42	58	101	132	136	185	162	220
M16	64	88	147	200	210	285	250	340
M18	89	121	202	275	287	390	346	470
M20	126	171	290	390	405	550	486	660
M22	169	230	390	530	559	745	656	890
M24	217	295	497	375	708	960	840	1140
M27	320	435	733	995	1032	1400	1239	1680
M30	435	590	995	1350	1401	1900	1681	2280
M33	590	800	1349	1830	1902	2580	2278	3090
M36	759	1030	1740	2360	2441	3310	2935	3980
M39	988	1340	2249	3050	3163	4290	3798	5150

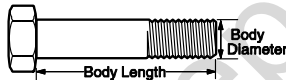
The guides and ruler furnished below are designed to help you select the appropriate hardware.



Nut, M8

Thread Diameter (mm)
Inside Diameter (in)
Threads per inch

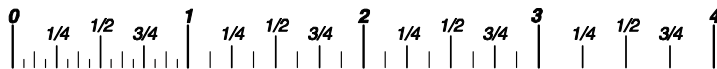
Nut, 1/2-16



Screw, M8- 1.25 x 25

Thread Diameter (mm)
Body Diameter
Distance between threads (mm)
Threads per inch
Body Length (mm)
Body Length (in)

Screw, 1/2- 16 x 2



Standard Hardware Sizing

When a washer or nut is identified as 1/2" (M8), this is the *Nominal size*, meaning the *inside diameter* is 1/2 inch (8mm metric thread diameter); if a second number is present it represents the *threads per inch* (distance between threads).

When bolt or capscrew is identified as 1/2 - 16 x 2" (M8 - 1.25 x 50), this means the *Nominal size*, or body diameter is 1/2 inch (8mm metric thread diameter), the second number, 16, represents the *threads per inch*, (1.25 thread diameter). The final number is the body length of the bolt or screw, 2 inches (50mm).

Torque Specification Chart						
FOR STANDARD MACHINE HARDWARE (Tolerance ± 20%)						
Hardware Grade	No Marks		SAE Grade 5		SAE Grade 8	
	SAE Grade 2		SAE Grade 5		SAE Grade 8	
Size Of Hardware	in/lbs		in/lbs		in/lbs	
	ft/lbs	Nm.	ft/lbs	Nm.	ft/lbs	Nm.
8-32	19	2.1	30	3.4	41	4.6
8-36	20	2.3	31	3.5	43	4.9
10-24	27	3.1	43	4.9	60	6.8
10-32	31	3.5	49	5.5	68	7.7
1/4-20	66	7.6	8	10.9	12	16.3
1/4-28	76	8.6	10	13.6	14	19.0
5/16-18	11	15.0	17	23.1	25	34.0
5/16-24	12	16.3	19	25.8	29	34.0
3/8-16	20	27.2	30	40.8	45	61.2
3/8-24	23	31.3	35	47.6	50	68.0
7/16-14	30	40.8	50	68.0	70	95.2
7/16-20	35	47.6	55	74.8	80	108.8
1/2-13	50	68.0	75	102.0	110	149.6
1/2-20	55	74.8	90	122.4	120	163.2
9/16-12	65	88.4	110	149.6	150	204.0
9/16-18	75	102.0	120	163.2	170	231.2
5/8-11	90	122.4	150	204.0	220	299.2
5/8-18	100	136	180	244.8	240	326.4
3/4-10	160	217.6	260	353.6	386	525.0
3/4-16	180	244.8	300	408.0	420	571.2
7/8-9	140	190.4	400	544.0	600	816.0
7/8-14	155	210.8	440	598.4	660	897.6
1-8	220	299.2	580	788.8	900	1,244.0
1-12	240	326.4	640	870.4	1,000	1,360.0

NOTES

- These torque values are to be used for all hardware excluding: locknuts, self-tapping screws, thread forming screws, sheet metal screws and socket head setscrews.
- Recommended seating torque values for locknuts:
 - for prevailing torque locknuts - use 65% of grade5 torques.
 - for flange whizlock nuts and screws - use 135% of grade 5 torques.
- Unless otherwise noted on assembly drawings, all torque values must meet this specification.

Common Hardware Types

Hex Head Capscrew



Washer



Carriage Bolt



Lockwasher



Hex Nut



Wrench & Fastener Size Guide

1/4" Bolt or Nut Wrench—7/16"	5/16" Bolt or Nut Wrench—1/2"	3/8" Bolt or Nut Wrench—9/16"	7/16" Bolt or Nut Wrench (Bolt)—5/8" Wrench (Nut)—11/16"	1/2" Bolt or Nut Wrench—3/4"
M6 Bolt or Nut Wrench—10mm	M8 Bolt or Nut Wrench—13mm	M10 Bolt or Nut Wrench—17mm	M12 Bolt or Nut Wrench—19mm	M14 Bolt or Nut Wrench—22mm

Parts Manual for

SNAPPER®

32" & 38" LARGE FRAME TWO-STAGE SNOW THROWERS (2010)

Not for
Reproduction

IT IS THE POLICY OF BRIGGS & STRATTON CORP TO IMPROVE ITS PRODUCTS WHENEVER IT IS POSSIBLE AND PRACTICAL TO DO SO. WE RESERVE THE RIGHT TO MAKE CHANGES OR ADD IMPROVEMENTS AT ANY TIME WITHOUT INCURRING ANY OBLIGATION TO MAKE SUCH CHANGES ON PRODUCTS

Briggs & Stratton Yard Power Products Group

535 Macon Road
McDonough, GA, 30253 U.S.A.
800-935-2967

www.snapper.com

Copyright © 2010 Briggs & Stratton Corporation
Milwaukee, WI USA. All Rights Reserved

Manual No. 7104730

Revision: A 10/1/2010