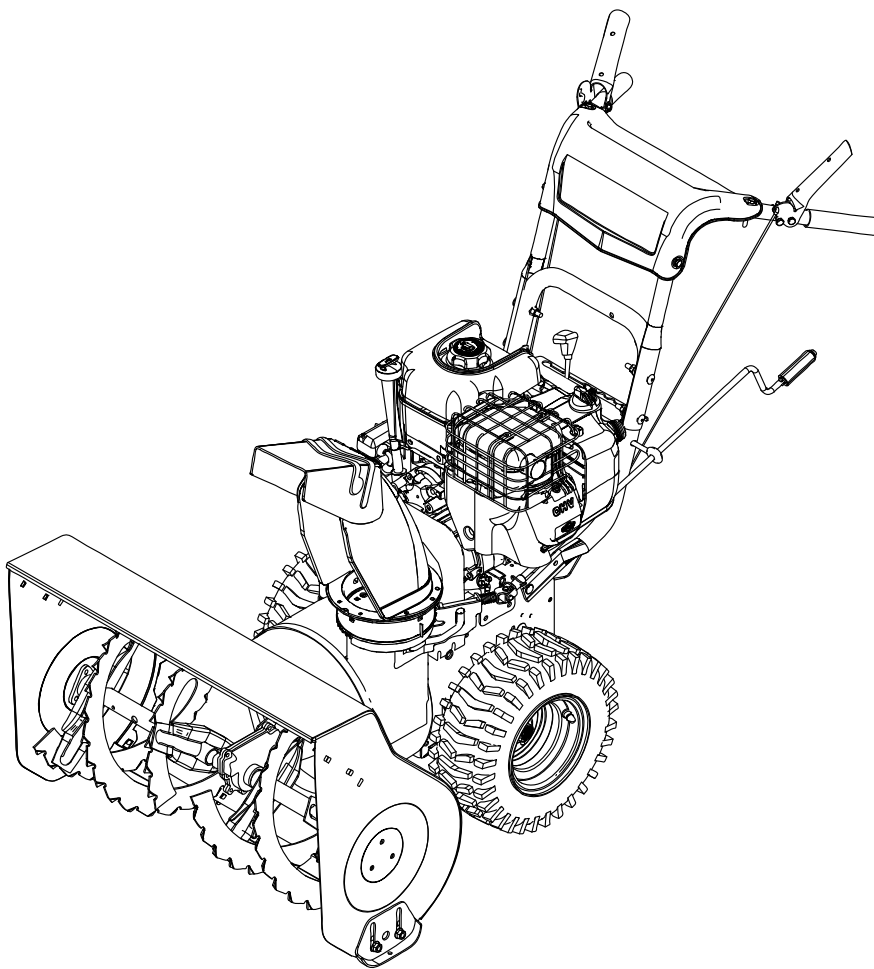


*Parts Manual for*  
**SNAPPER®**

**24" 9TP TWO STAGE  
INTERMEDIATE SNOWTHROWER (CE)  
2011**

*Model No. Description*  
1696008 H924RH



**Briggs & Stratton Yard Power Products Group**  
535 Macon Road  
McDonough, GA, 30253 U.S.A.  
800-935-2967

**Manual No. 7105281**  
**Revision: A 8/29/2011**

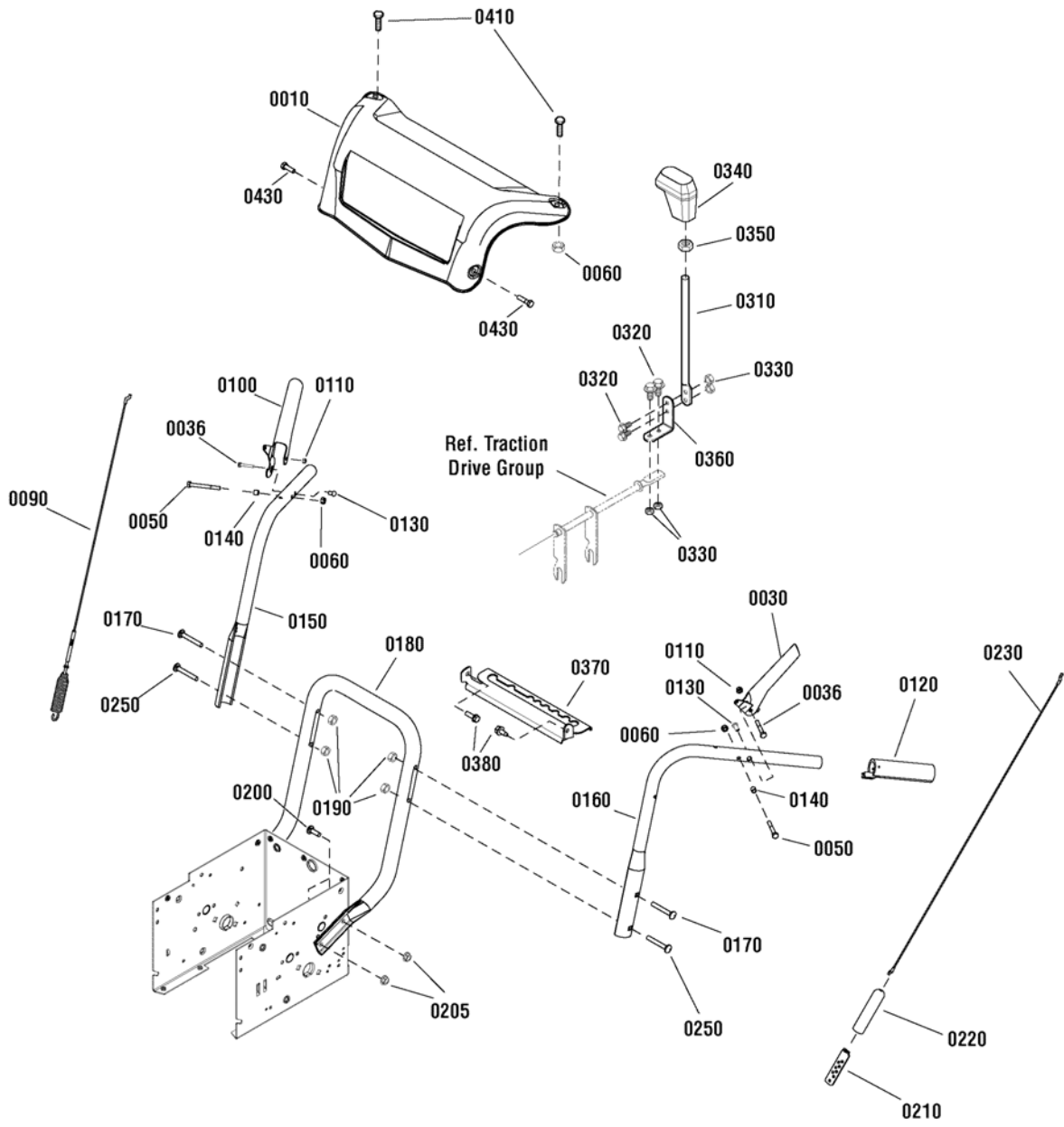
Not for  
Reproduction

<b>PAGE</b>	<b>GROUP</b>
4	Handles & Controls Group
6	Auger Housing Group
8	Auger Drive Group
10	Gear Case Assembly
12	Discharge Chute Group
16	Engine & Frame Group
18	Traction Drive Group
20	Decals Group
22	Wheels & Tires Group

Not for  
Reproduction

# Handles & Controls Group

---

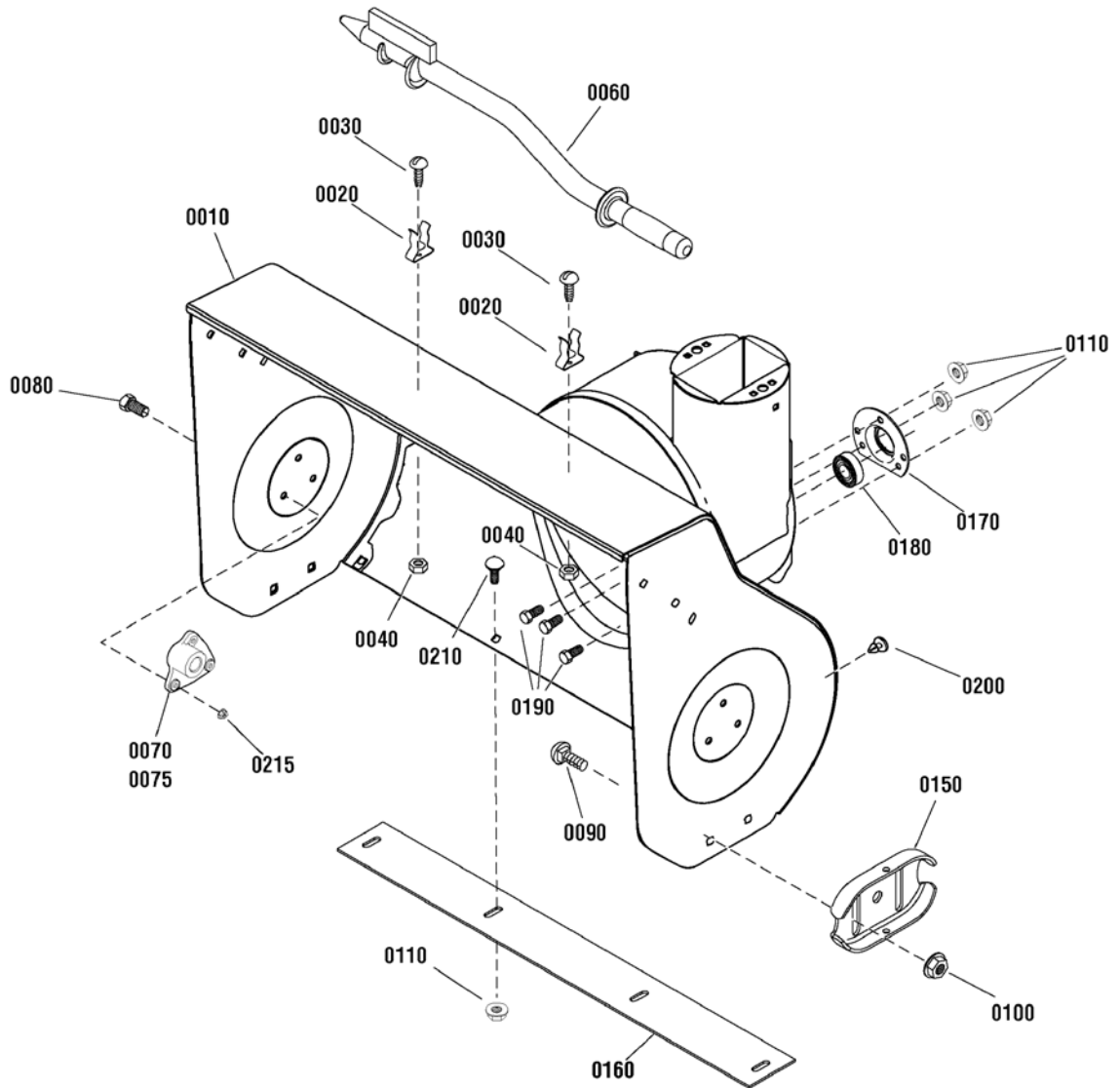


<b>Item</b>	<b>Part No</b>	<b>Qty</b>	<b>Description</b>
0010	1738089D	1	PANEL
0030	1739782A	1	LEVER, Clutch, LH
0036	1750554	2	BOLT, Shoulder, 10-24
0050	1921962	2	CAPSCREW, Hex Head, 1/4-20 x 1-3/4, G5
0060	1920397	4	NUT, Hex Lock ESNA Light, 1/4-20
0090	1737544	1	CABLE, Auger Drive
0100	1739783A	1	LEVER, Clutch, RH
0110	1933896	2	NUT, Hex Lock, Nylon Insert, 10-24
0120	1726317	2	GRIP
0130	1736542	2	SPACER, Stepped
0140	1678392	2	SPACER, 1/4 ID x 3/8 OD x 5/16"
0150	1734587A	1	HANDLE, Upper, RH
0160	1734586A	1	HANDLE, Upper, LH
0170	1960273	2	BOLT, Carriage, Short Neck, 5/16-18 x 2-1/4, G5
0180	1737274A	1	HANDLE, Lower
0190	1739305	4	NUT, Hex Flange, ESNA, 5/16-18
0200	1931333	4	BOLT, Carriage, Short Neck, 5/16-18 x 3/4, G5
0205	1960684	4	NUT, Hex KEPS, 5/16-18
0210	723259	1	BRACKET, Cable Adjusting
0220	723154	1	BOOT, Spring End Cover
0230	727331	1	CABLE, Forward Drive
0250	1931338	2	BOLT, Carriage, Short Neck, 5/16-18 x 1-3/4
0310	729138A	1	ROD, Shift
0320	723010	4	BOLT, Hex, 1/4-20 x 3/4, GR5
0330	725429	4	NUT, Hex Centerlock, 1/4-20
0340	723074	1	GRIP, Lever
0350	723381	1	NUT, Hex Jam, 1/2-13
0360	725568	1	LEVER, Spring Shift
0370	1737760D	1	BRACKET, Gear Select
0380	1927429	2	SCREW, Hex Washer Head, Taptite, 1/4-20 x 5/8
0410	1931320	2	BOLT, Carriage, Short Neck, 1/4-20 x 1-1/4, G5
0430	1960556	2	SCREW, Pan Head Torx, 1/4-20 x 3/4

**Footnotes:**

# Auger Housing Group

---



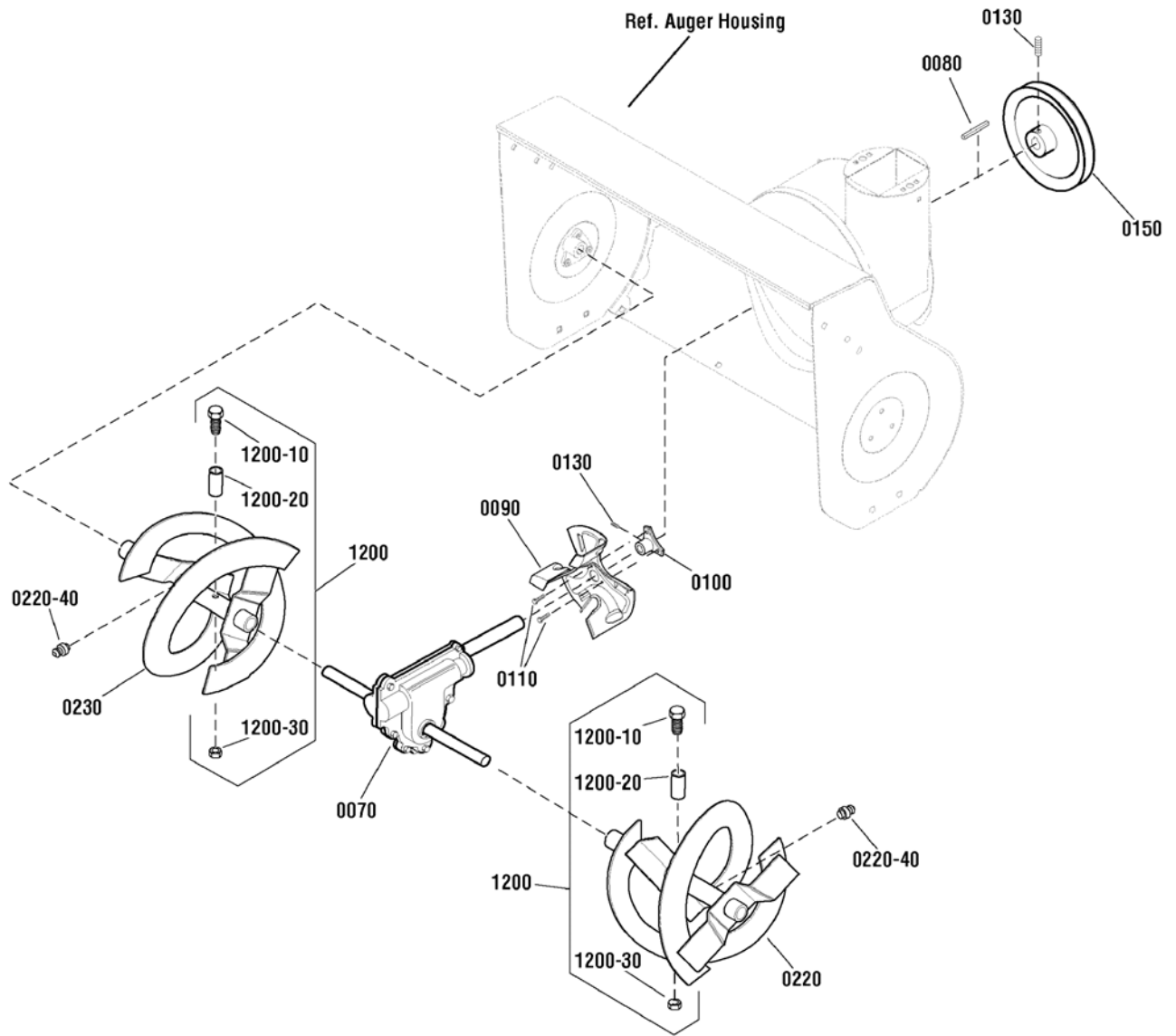
---

<b>Item</b>	<b>Part No</b>	<b>Qty</b>	<b>Description</b>
0010	1687516	1	AUGER HOUSING ASSEMBLY, 24"
0020	1736620	2	CLAMP, Spring
0030	1960569	2	SCREW, Truss Head Torx, #10-24 x 3/8
0040	7091290	2	NUT, Hex Lock, Nylon, #10C
0060	1736094	1	BRUSH, Cleanout
0070	1739732	1	BEARING, Auger, RH
0075	1739761	1	BEARING, Auger, LH
0080	1935450	6	CAPSCREW, Hex Head, 1/4-20 x 3/4
0090	7091547	4	BOLT, Carriage, Short Neck, 3/8C x 3/4, GR5
0100	7091619	4	NUT, Hex Flange Lock, 3/8C
0110	725273	7	NUT, Hex Flange Serrated Lock, 5/16-18
0150	1727854A	2	SKID SHOE
0160	1738301A	1	BLADE, Scraper, 24
0170	724712	1	RETAINER, Ball Bearing
0180	1705897	1	BEARING, Ball, 11/16 x 1-9/16 x 15/32
0190	720018	3	BOLT, Hex, 5/16-18 x 5/8
0200	725521	2	PLUG, Panel
0210	7090799	4	BOLT, Carriage, Short Neck, 5/16C x 5/8, GR5
0215	722398	6	NUT, Flange Lock, 1/4-20C

Not for  
Reproduction

**Footnotes:**

# Auger Drive Group





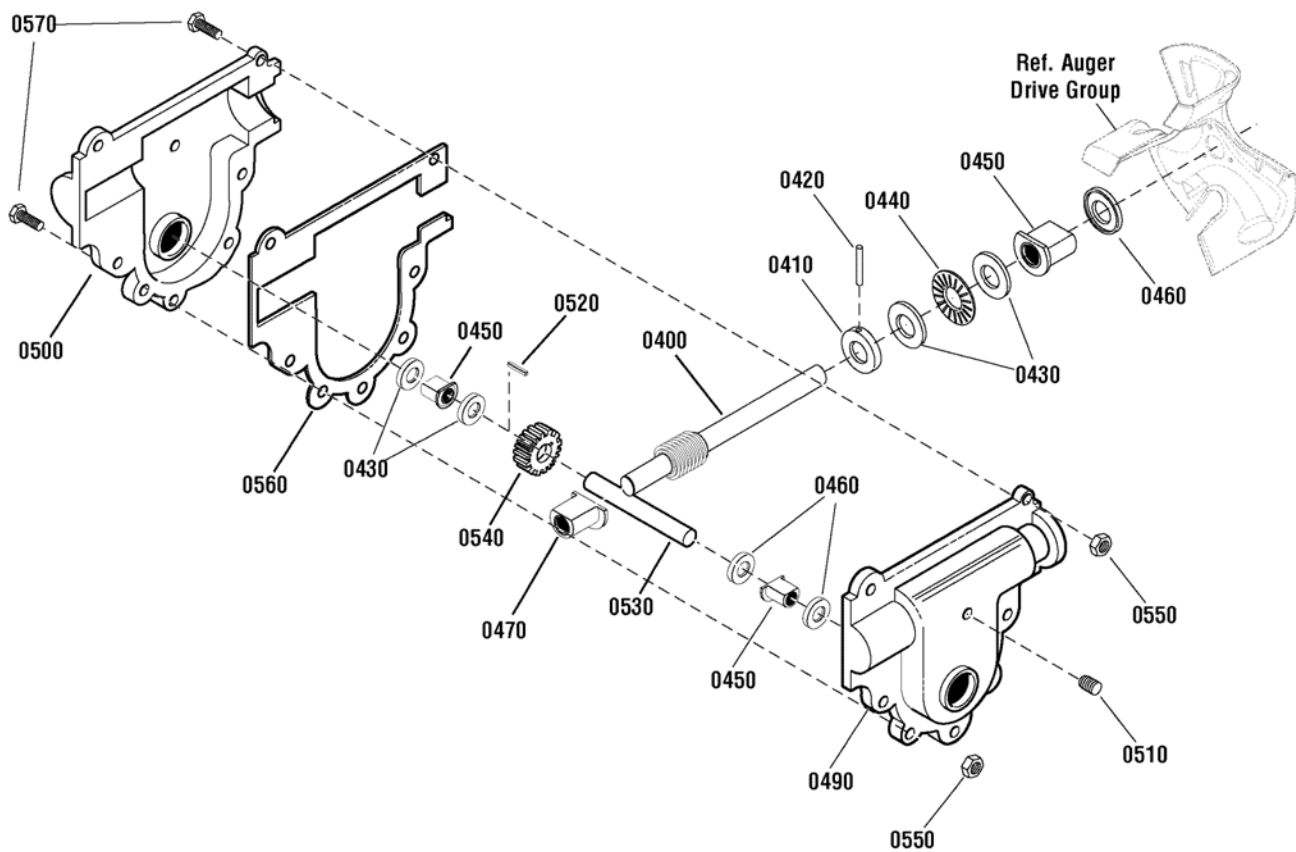
---

<b>Item</b>	<b>Part No</b>	<b>Qty</b>	<b>Description</b>
0070	1752178	1	GEAR CASE ASSEMBLY
0080	722726	1	KEY, Square, 3/16 x 3/4
0090	1739094A	1	IMPELLER
0100	1739073	1	HUB, Impeller
0110	1930601	3	SCREW, Hex Washer Head, Taptite, 5/16-18 x 5/8
0130	7090848	3	SET SCREW, Socket Head, 5/16-18 x 1/2
0150	722128	1	PULLEY
0220	1739261A	1	AUGER, 24", LH
0220-40	721620	2	FITTING, Grease
0230	1739262A	1	AUGER, 24", RH
1200	722130	1	KIT, Shear Bolt (Includes Ref. Nos. 1200-10, 1200-20 & 1200-30)
1200-10	726061	2	CAPSCREW, Hex Head, 1/4-20 x 1-3/4, G2 (Included with Ref. No. 1200)
1200-20	725429	2	NUT, Center Lock, 1/4-20 (Included with Ref. No. 1200)
1200-30	723913	1	SPACER, Sleeve, .250" ID x .47" OD x .2" thick (Included with Ref. No. 1200)

Not for  
Reproduction

**Footnotes:**

# Gear Case Assembly



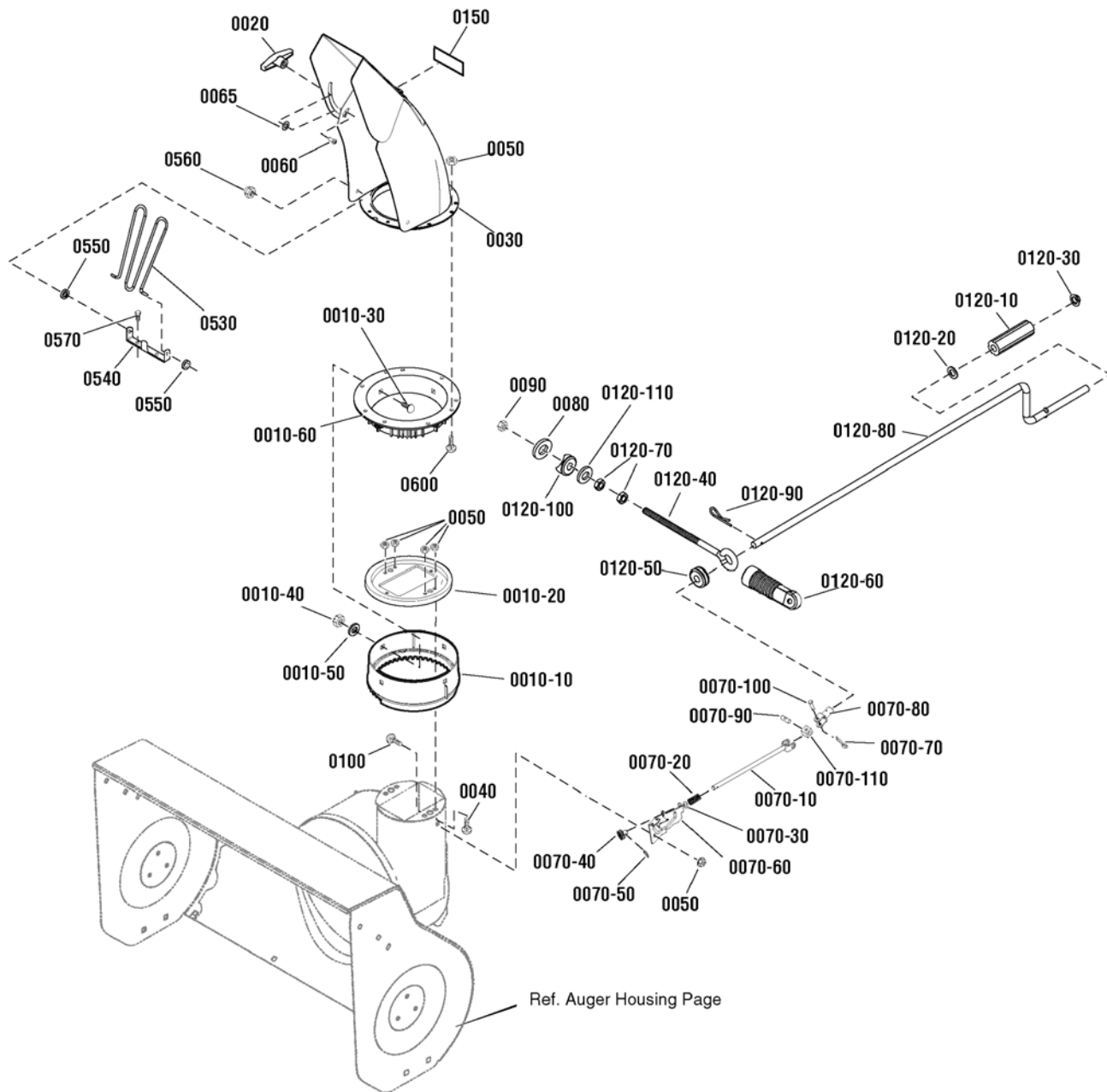
---

<b>Item</b>	<b>Part No</b>	<b>Qty</b>	<b>Description</b>
0400	1751673	1	SHAFT, Impeller
0410	724639	1	COLLAR, Thrust, 3/4 x 1-1/4
0420	724042	1	PIN, Spring
0430	724079	4	WASHER, Thrust
0440	724352	1	BEARING, Roll Thrust, 3/4 x 1-1/4 OD
0450	724339	3	BEARING, Flange, 3/4 ID x 1 OD
0460	726077	3	SEAL, Oil 3/4 x 1-3/16
0470	724337	1	BEARING, Flange, 1/2 ID x 3/4 OD
0490	721647	1	CASE, Gear, LH
0500	721649	1	CASE, Gear, RH
0510	726003	1	SCREW, 3/8-16 x 1/2
0520	723995	1	KEY, Woodruff
0530	727601	1	SHAFT, Output
0540	1752499	1	GEAR, Worm
0550	722398	7	NUT, Flange Lock, 1/4-20
0560	724373	1	GASKET
0570	727590	7	CAPSCREW, 1/4-20 X 3/4, G5

Not for  
Reproduction

**Footnotes:**

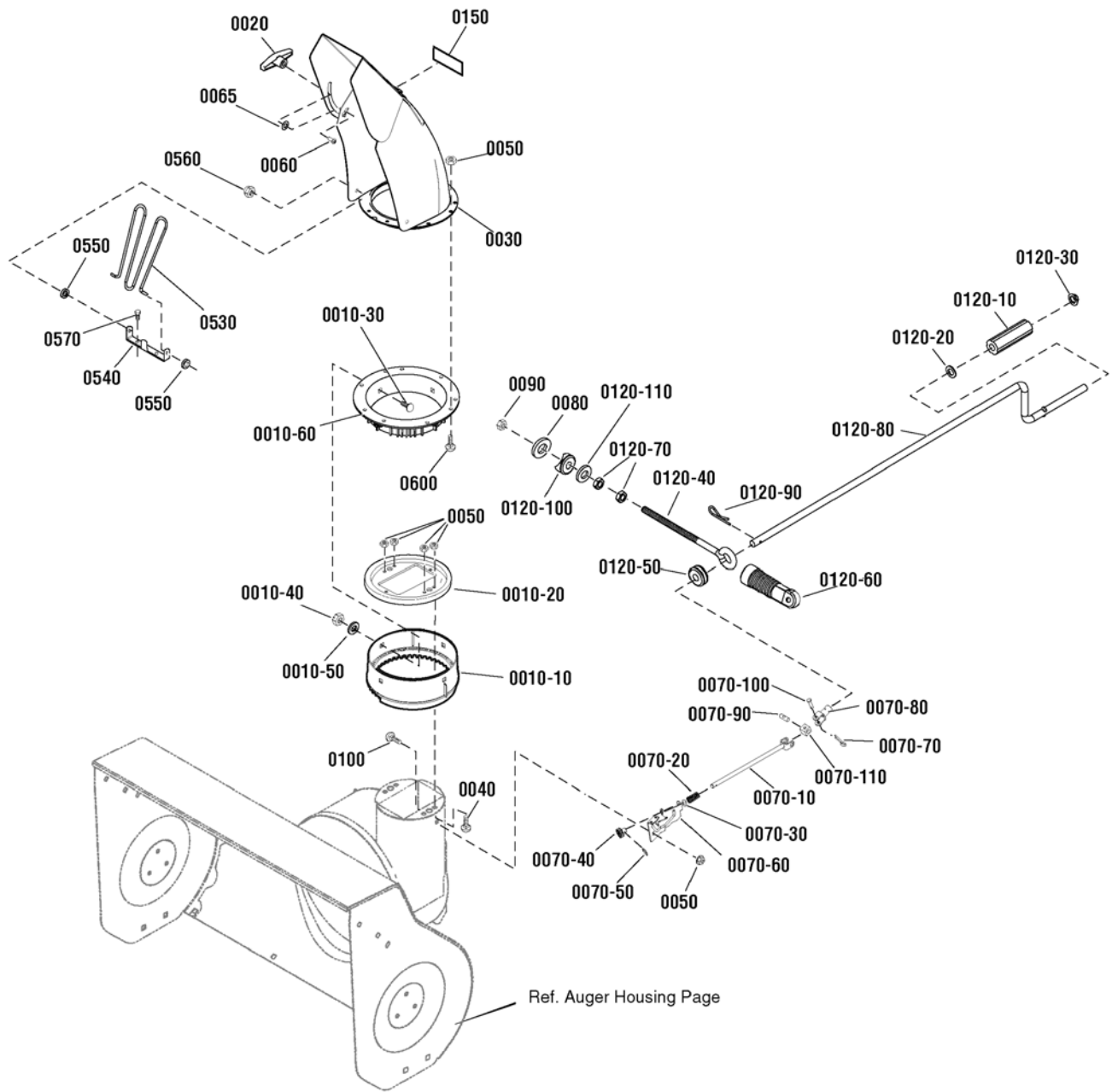
# Discharge Chute Group



<b>Item</b>	<b>Part No</b>	<b>Qty</b>	<b>Description</b>
0010-10	722138	1	RING, Outer Chute
0010-20	722340	1	COLLAR, Chute Rotate
0010-30	722899	4	BOLT, Carriage, 5/16-18 x 1
0010-40	725321	4	NUT, Hex Nylock, 5/16-18
0010-50	725331	4	WASHER, Flat, 5/8
0010-60	1741917	1	RING, Inner Chute
0020	722136	1	KNOB, Wing, 5/16-18
0030	1736380H	1	CHUTE ASSEMBLY
0040	7091530	4	BOLT, Carriage, Short Neck, 1/4C x 3/4, G5
0050	5025391	9	NUT, Hex Flange, Nylock, 1/4-20
0060	720064	1	BOLT, Carriage, 5/16-18 x 1-1/2
0065	2860210	1	WASHER, Nylon
0070	726160	1	GEAR / YOKE ROD ASSEMBLY
0070-10	722202	1	ROD, Yoke Crank
0070-20	722414	1	SPRING, Compression
0070-30	720164	1	WASHER, Flat, 3/8
0070-40	722073	1	GEAR, 9 Tooth
0070-50	722139	1	PIN, Hair
0070-60	1740591A	1	BRACKET, Chute Gear
0070-70	724605	1	PIN, Cotter
0070-80	722076	1	YOKE TUBE ASSEMBLY
0070-90	724564	1	PIN, Universal Joint
0070-100	724579	1	PIN, Clevis
0070-110	724565	1	BLOCK, Universal Pivot
0080	725332	1	WASHER, Flat, 5/8
0090	727481	1	NUT, Hex Nylock, 3/8-16
0100	720386	1	BOLT, Carriage 1/4-20 x 3/4
0120-10	723140	1	GRIP, Chute Crank
0120-20	723184	1	WASHER, Flat, 5/8
0120-30	725415	1	NUT, Push, 3/8
0120-40	722191	1	EYEBOLT, 3/8-16 x 6-1/2
0120-50	722044	1	GROMMET, Eyebolt
0120-60	722192	1	BOOT, Eyebolt
0120-70	725323	2	NUT, Hex Jam, 3/8-16
0120-80	722075	1	CRANK, Chute Turn
0120-90	725367	1	PIN, Hair
0120-100	723186	1	ADAPTOR, Boot to Handle
0120-110	725332	1	WASHER, Flat, 5/8
0150	1733601	2	DECAL, Hinge
0530	1733475	1	GUARD, Chute
0540	1737683	1	BRACKET, Chute Guard
0550	1738174	2	GROMMET, Chute Guard Bracket
0560	1960140	2	NUT, Push, For 1/8 Stud

**Footnotes:**

# Discharge Chute Group



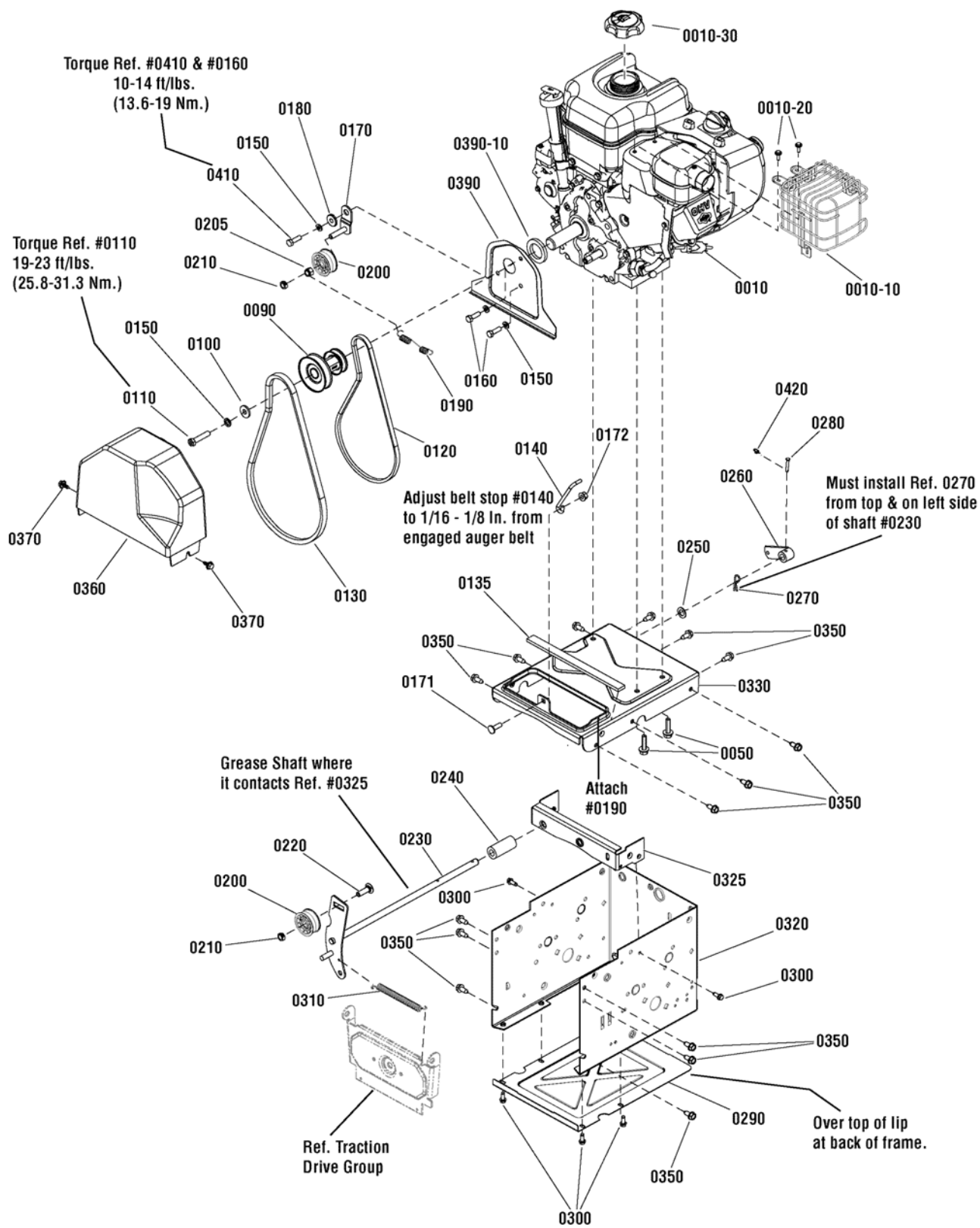
---

<b>Item</b>	<b>Part No</b>	<b>Qty</b>	<b>Description</b>
0570	1925003	2	SCREW, Hex Washer, Head, Taptite, 1/4-20 x 1/2
0600	1935450	4	CAPSCREW, Hex Flange Head, 1/4-20 x 3/4, G5

Not for  
Reproduction

Footnotes:

# Engine & Frame Group



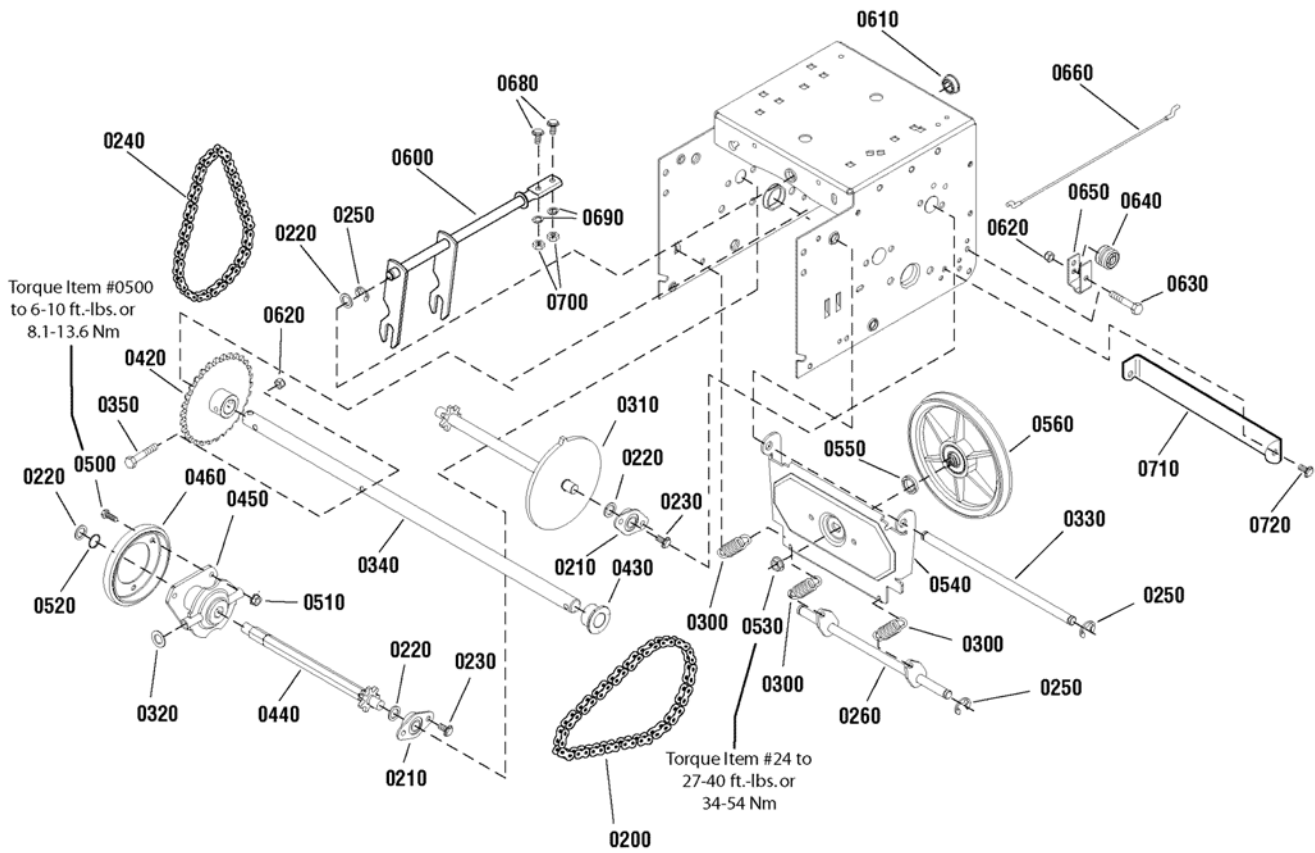


<b>Item</b>	<b>Part No</b>	<b>Qty</b>	<b>Description</b>
0010	12D112-0143-E8	1	* ENGINE, 9TP Briggs & Stratton (Engine Model: 12D112-0143-E8)
0010-10	793193	1	* GUARD, Muffler
0010-20	699854	2	* SCREW, Muffler Guard
0010-30	795027	1	* CAP, Fuel
0050	75246	4	SCREW, Hex Head, Trilobular, 3/8-16 x 1-1/4
0090	1739514	1	PULLEY
0100	1919381	2	WASHER, 5/16
0110	722041	1	CAPSCREW, Hex Head, 5/16-24, 1-3/4, G5
0120	1733324	1	V-BELT, Traction Drive, 3L, 33.13
0130	724801	1	BELT, Auger Drive, V4L 38.10
0135	1750314	1	SEAL, Strip
0140	1737377	1	STOP, Belt
0150	1917356	4	LOCKWASHER, Spring, 5/16
0160	1921515	2	CAPSCREW, Hex Head, 5/16-24 x 3/4 G5
0170	1739846	1	IDLER BRACKET
0171	1931335	1	BOLT, Carriage, Short Neck, 5/16-18 x1 G5
0172	1960684	1	NUT, Hex KEPS, 5/16-18
0180	722072	1	BUSHING, Idler Bracket
0190	722457	1	SPRING, Extension, Idler
0200	722378	2	IDLER
0205	7091299	1	NUT, Hex, 3/8-16
0210	1960251	2	NUT, Hex Center Lock, Jam, 3/8-16
0220	724823	1	BOLT, Carriage, Short Neck, 3/8-16 x 1-1/2, G5
0230	1739574	1	AUGER IDLER
0240	1739964	1	SPACER, Auger Bracket
0250	1960027	1	WASHER, 1/2
0260	1733451	1	ARM, Control
0270	725367	1	PIN, Hair, 3/8
0280	1736381	1	PIN, Clevis
0290	1737221A	1	PANEL, Bottom
0300	1927429	6	SCREW, Hex Washer Head, Taptite, 1/4-20 x 5/8
0310	722455	1	SPRING, Extension, Auger
0320	1739107D	1	FRAME
0325	1739093A	1	BRACKET, Auger & Traction Rod Mounting
0330	1739450D	1	PLATE, Engine
0350	1664847	15	SCREW, Hex Washer Head, Taptite, 5/16-18 x 3/4
0360	1750551	1	COVER, Belt
0370	1751355	2	SCREW, Hex Washer Head, Tap, SEMS, 1/4-20 x 3/4
0390	1733868A	1	PLATE, Seal
0390-10	1733898	1	SEAL, Foam
0410	725996	1	BOLT, Hex, 5/16-24 x 1
0420	7023590	1	PIN, Cotter, Self Lockkng, 1/4

**Footnotes:**

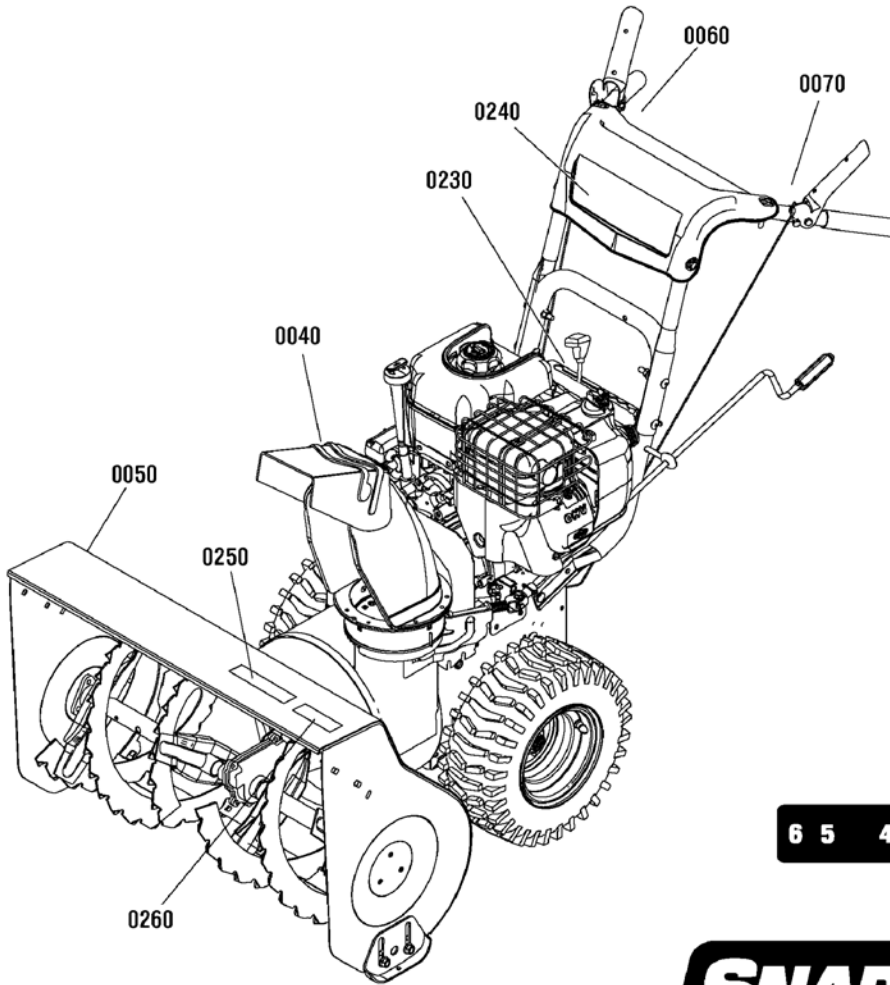
NOTE: \* Purchase engine parts from engine manufacturer dealer.

# Traction Drive Group



<b>Item</b>	<b>Part No</b>	<b>Qty</b>	<b>Description</b>
0200	724613	1	CHAIN, Roller, 420 x 19"
0210	723655	4	RETAINER & BUSHING ASSEMBLY
0220	724619	5	WASHER, Flat, 1/2
0230	1924856	8	SCREW, Hex Washer Head, Taptite, 5/16-18 x 1/2
0240	724627	1	CHAIN, Roller, 420 x 18"
0250	721910	5	RETAINER, Ring, 7/16
0260	722377	1	SPRING LINK
0300	1736469	3	SPRING, Extension
0310	722081	1	SPROCKET
0320	1960027	2	WASHER, 1/2
0330	722082	1	AXLE, Swing Plate, 10-1/2"
0340	722209	1	AXLE, 21-3/8"
0350	720220	1	BOLT, Hex, 1/4-20 x 1-3/4 G8
0420	722080	1	AXLE SPROCKET, 30T
0430	722091	2	BEARING, Axle
0440	722083	1	HEX SHAFT & SPROCKET ASSEMBLY
0450	1739282	1	BEARING TRUNNION ASSEMBLY
0460	722185	1	WHEEL, Friction
0500	1921959	3	CAPSCREW, Hex Head, 1/4-20 x 5/8, G5
0510	1928372	3	NUT, Hex KEPS, 1/4-20
0520	1733326	1	RING, Retaining, External Tooth
0530	722391	1	NUT, Flange Lock, 3/8-24
0540	722069	1	PLATE, Swinging
0550	722110	1	SPACER, Friction Pulley
0560	722092	1	FRICTION PULLEY ASSEMBLY
0600	722078	1	SPEED SELECT
0610	724636	1	BEARING, Flange, 1/2 ID x 7/5 OD
0620	1920397	2	NUT, Hex Lock, ESNA Light, 1/4-20
0630	1922837	1	CAPSCREW, Hex Head, 1/4-20 x 1-1/2, G5
0640	724621	1	SPOOL CABLE, Auger Control
0650	1750398	1	BRACKET, Spool
0660	1750403	1	CABLE, Drive
0680	720017	2	BOLT, Hex, 1/4-20 x 5/8
0690	7091576	2	NUT, Hex, 1/4-20, GR5
0700	1916964	2	LOCKWASHER, Spring, 1/4
0710	722364	1	BRACKET, Support
0720	1927429	2	SCREW, Hex Washer Head, Taptite, 1/4-20 x 5/8

**Footnotes:**



0040



0050



0060



0070



0230



0240



0260



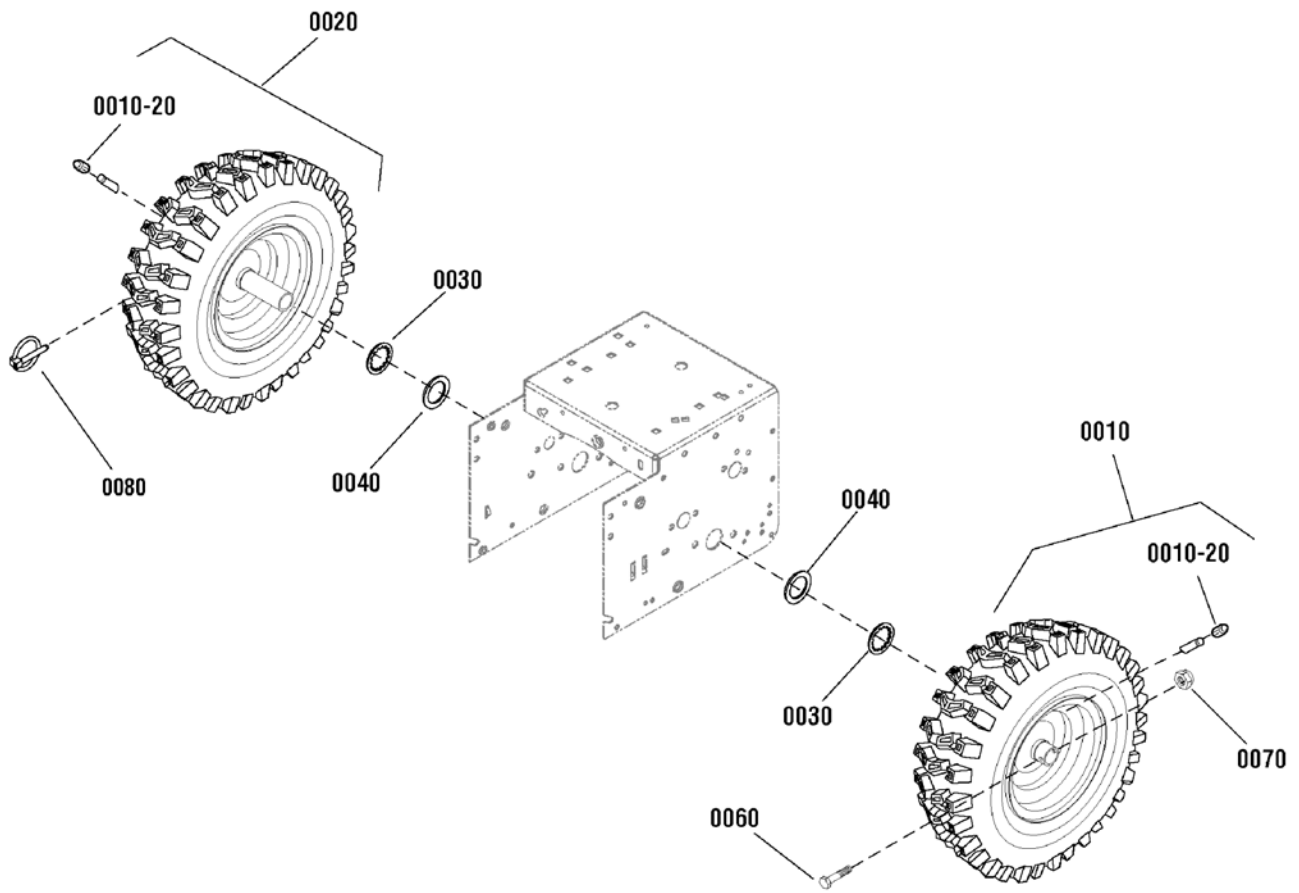
0250

---

<b>Item</b>	<b>Part No</b>	<b>Qty</b>	<b>Description</b>
0040	1727207	1	DECAL, Chute Warning
0050	1737867	1	DECAL, Danger Auger Icons
0060	1737869	1	DECAL, Auger Control Symbols
0070	1737870	1	DECAL, Traction Control Symbols
0230	1737871	1	DECAL, Transmission Speed Control, 1-6
0240	1750421	1	DECAL, Logo, Panel
0250	1751401	1	DECAL, Logo, Housing
0260	1753540	1	DECAL, Model

Not for  
Reproduction

**Footnotes:**



---

<b>Item</b>	<b>Part No</b>	<b>Qty</b>	<b>Description</b>
0010	1750333	1	WHEEL & TIRE ASSEMBLY, 13 X 5, LH (Includes Ref. No. 0010-20)
0020	1750332	1	WHEEL & TIRE ASSEMBLY, 13 X 5, RH (Includes Ref. No. 0010-20)
0010-20	2172353	2	VALVE STEM & CAP
0030	1657528	2	RING, Retaining
0040	725394	2	WASHER, Flat, 3/4
0060	724545	1	CAPSCREW, Hex, 1/4-20 x 1-3/4, G5
0070	722400	1	NUT, Hex Nylock, 1/4-20
0080	725431	1	PIN, Klik

Not for  
Reproduction

**Footnotes:**









# Hardware Identification & Torque Specifications

Torque Specification Chart								
FOR STANDARD METRIC MACHINE HARDWARE (Tolerance ± 20%)								
Property Class	5.6		8.8		10.9		12.9	
	Class 5.6		Class 8.8		Class 10.9		Class 12.9	
Size Of Hardware	in/lbs		in/lbs		in/lbs		in/lbs	
	ft/lbs	Nm.	ft/lbs	Nm.	ft/lbs	Nm.	ft/lbs	Nm.
M3	5.88	.56	13.44	1.28	19.2	1.80	22.92	2.15
M4	13.44	1.28	30.72	2.90	43.44	4.10	52.56	4.95
M5	26.4	2.50	60.96	5.75	5.97	8.10	7.15	9.7
M6	44.64	4.3	7.3	9.9	10.3	14	12.1	16.5
M7	5.2	7.1	12.1	16.5	16.9	23	19.9	27
M8	7.7	10.5	17.7	24	25	34	29	40
M10	15	21	35	48	50	67	59	81
M12	26	36	61	83	86.2	117	103	140
M14	42	58	101	132	136	185	162	220
M16	64	88	147	200	210	285	250	340
M18	89	121	202	275	287	390	346	470
M20	126	171	290	390	405	550	486	660
M22	169	230	390	530	559	745	656	890
M24	217	295	497	375	708	960	840	1140
M27	320	435	733	995	1032	1400	1239	1680
M30	435	590	995	1350	1401	1900	1681	2280
M33	590	800	1349	1830	1902	2580	2278	3090
M36	759	1030	1740	2360	2441	3310	2935	3980
M39	988	1340	2249	3050	3163	4290	3798	5150

Torque Specification Chart						
FOR STANDARD MACHINE HARDWARE (Tolerance ± 20%)						
Hardware Grade	No Marks		SAE Grade 5		SAE Grade 8	
	SAE Grade 2		SAE Grade 5		SAE Grade 8	
Size Of Hardware	in/lbs		in/lbs		in/lbs	
	ft/lbs	Nm.	ft/lbs	Nm.	ft/lbs	Nm.
8-32	19	2.1	30	3.4	41	4.6
8-36	20	2.3	31	3.5	43	4.9
10-24	27	3.1	43	4.9	60	6.8
10-32	31	3.5	49	5.5	68	7.7
1/4-20	66	7.6	8	10.9	12	16.3
1/4-28	76	8.6	10	13.6	14	19.0
5/16-18	11	15.0	17	23.1	25	34.0
5/16-24	12	16.3	19	25.8	29	34.0
3/8-16	20	27.2	30	40.8	45	61.2
3/8-24	23	31.3	35	47.6	50	68.0
7/16-14	30	40.8	50	68.0	70	95.2
7/16-20	35	47.6	55	74.8	80	108.8
1/2-13	50	68.0	75	102.0	110	149.6
1/2-20	55	74.8	90	122.4	120	163.2
9/16-12	65	88.4	110	149.6	150	204.0
9/16-18	75	102.0	120	163.2	170	231.2
5/8-11	90	122.4	150	204.0	220	299.2
5/8-18	100	136	180	244.8	240	326.4
3/4-10	160	217.6	260	353.6	386	525.0
3/4-16	180	244.8	300	408.0	420	571.2
7/8-9	140	190.4	400	544.0	600	816.0
7/8-14	155	210.8	440	598.4	660	897.6
1-8	220	299.2	580	788.8	900	1,244.0
1-12	240	326.4	640	870.4	1,000	1,360.0

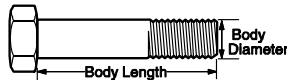
The guides and ruler furnished below are designed to help you select the appropriate hardware.



Nut, M8

Thread Diameter (mm)  
Inside Diameter (in)    Threads per inch

Nut, 1/2-16



Screw, M8- 1.25 x 25

Thread Diameter (mm)    Distance between threads (mm)    Body Length (mm)  
Body Diameter    Threads per inch    Body Length (in)

Screw, 1/2- 16 x 2



## Standard Hardware Sizing

When a washer or nut is identified as 1/2" (M8), this is the *Nominal size*, meaning the *inside diameter* is 1/2 inch (8mm metric thread diameter); if a second number is present it represents the *threads per inch* (distance between threads).

When bolt or capscrew is identified as 1/2 - 16 x 2" (M8 - 1.25 x 50), this means the *Nominal size*, or body diameter is 1/2 inch (8mm metric thread diameter), the second number, 16, represents the *threads per inch*, (1.25 thread diameter). The final number is the body length of the bolt or screw, 2 inches (50mm).

## NOTES

- These torque values are to be used for all hardware excluding: locknuts, self-tapping screws, thread forming screws, sheet metal screws and socket head setscrews.
- Recommended seating torque values for locknuts:
  - for prevailing torque locknuts - use 65% of grade 5 torques.
  - for flange whizlock nuts and screws - use 135% of grade 5 torques.
- Unless otherwise noted on assembly drawings, all torque values must meet this specification.

## Common Hardware Types

Hex Head Capscrew



Washer

Lockwasher

Carriage Bolt



Hex Nut

## Wrench & Fastener Size Guide

1/4" Bolt or Nut Wrench—7/16"	5/16" Bolt or Nut Wrench—1/2"	3/8" Bolt or Nut Wrench—9/16"	7/16" Bolt or Nut Wrench (Bolt)—5/8" Wrench (Nut)—11/16"	1/2" Bolt or Nut Wrench—3/4"
M6 Bolt or Nut Wrench—10mm	M8 Bolt or Nut Wrench—13mm	M10 Bolt or Nut Wrench—17mm	M12 Bolt or Nut Wrench—19mm	M14 Bolt or Nut Wrench—22mm

*Parts Manual for*

# **SNAPPER®**

## **24" 9TP TWO STAGE INTERMEDIATE SNOWTHROWER (CE) 2011**

Not for  
Reproduction

IT IS THE POLICY OF BRIGGS & STRATTON CORP TO IMPROVE ITS PRODUCTS WHENEVER IT IS POSSIBLE AND PRACTICAL TO DO SO. WE RESERVE THE RIGHT TO MAKE CHANGES OR ADD IMPROVEMENTS AT ANY TIME WITHOUT INCURRING ANY OBLIGATION TO MAKE SUCH CHANGES ON PRODUCTS

**Briggs & Stratton Yard Power Products Group**

535 Macon Road  
McDonough, GA, 30253 U.S.A.  
800-935-2967

[www.snapper.com](http://www.snapper.com)

Copyright © 2011 Briggs & Stratton Corporation  
Milwaukee, WI USA. All Rights Reserved

**Manual No. 7105281  
Revision: A 8/29/2011**