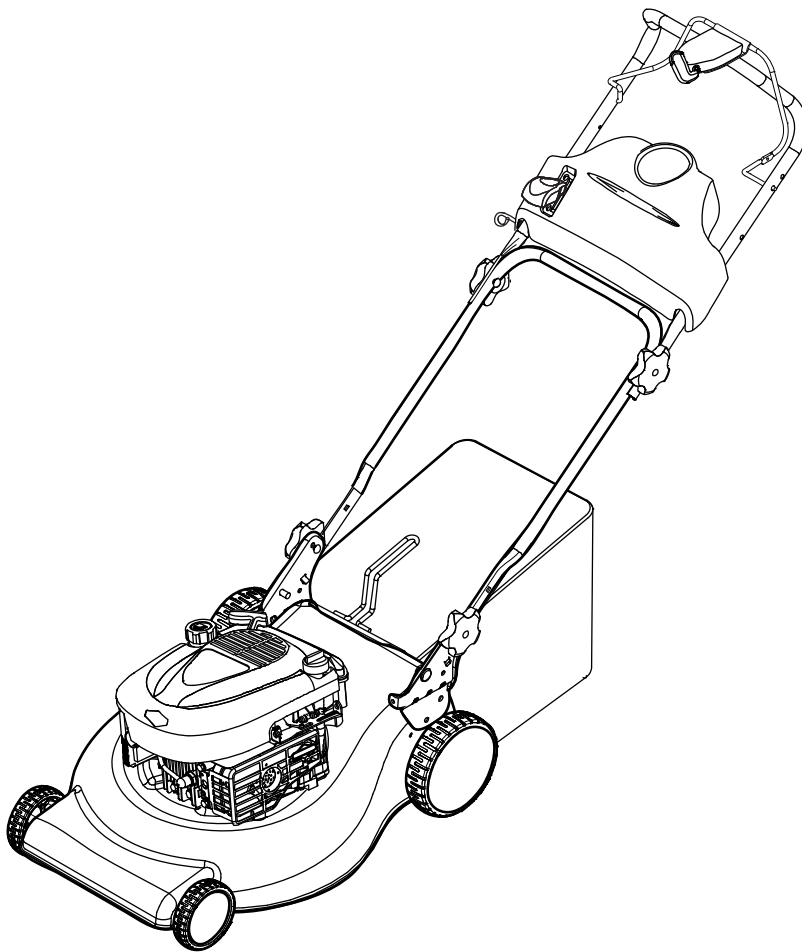


*Parts Manual for*

# **SNAPPER®**

## **19" STEEL DECK REAR DISCHARGE EUROPEAN SELF-PROPELLED WALK BEHIND MOWERS**

<i>Model No.</i>	<i>Description</i>
881586	ERDV19675EX
881587	ERDV19850EHW



**Briggs & Stratton Yard Power Products Group**

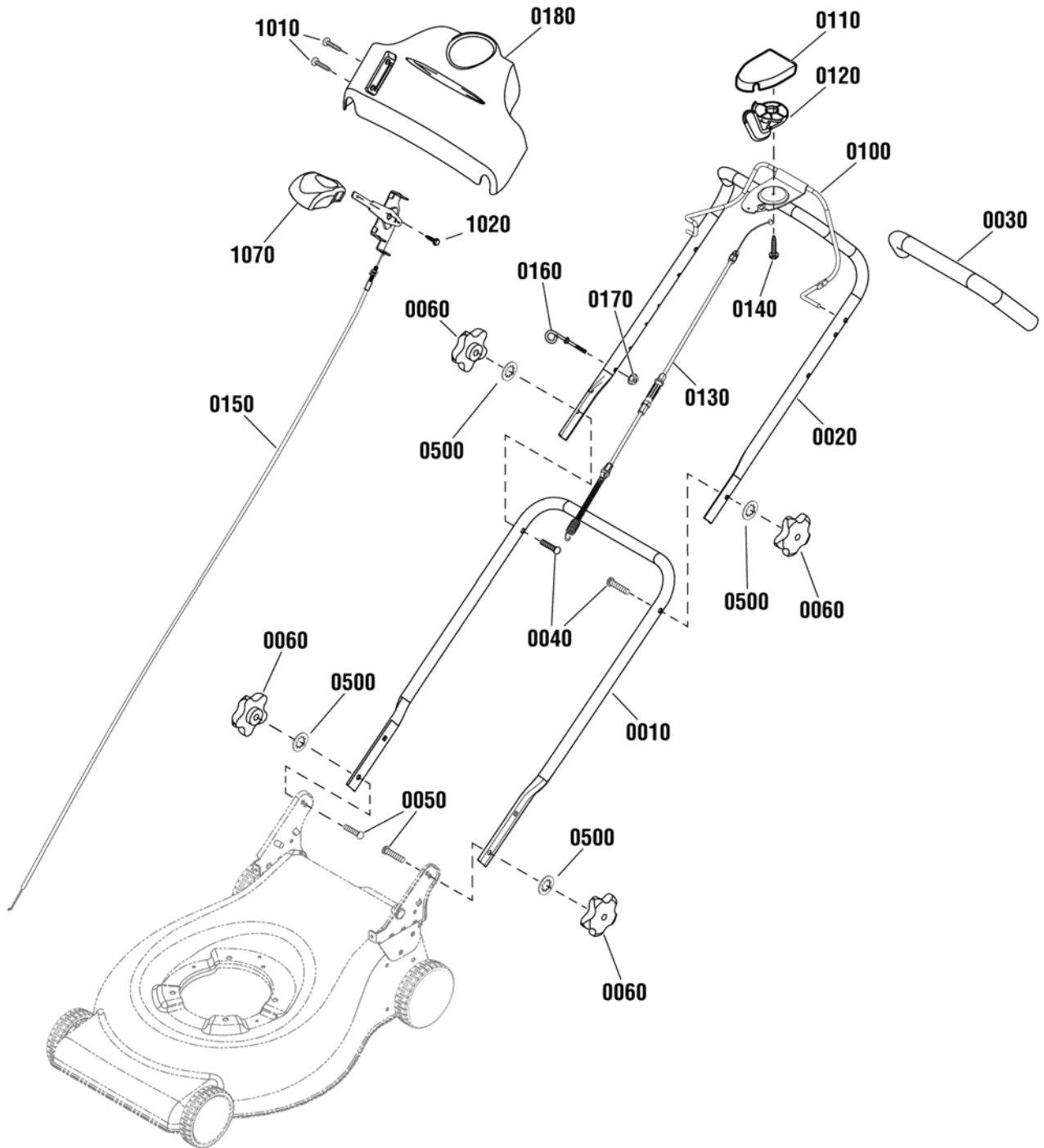
535 Macon Road  
McDonough, GA, 30253 U.S.A.  
800-935-2967

**Manual No.** 7105602  
**Revision:** - 12/19/2011



<b>PAGE</b>	<b>GROUP</b>
4	Handle Group
6	Deck Group
8	Height of Cut Group
10	Wheels Group - Standard Wheel
12	Wheels Group - High Wheel
14	Engine Group
16	Blade Group
18	Decals Group

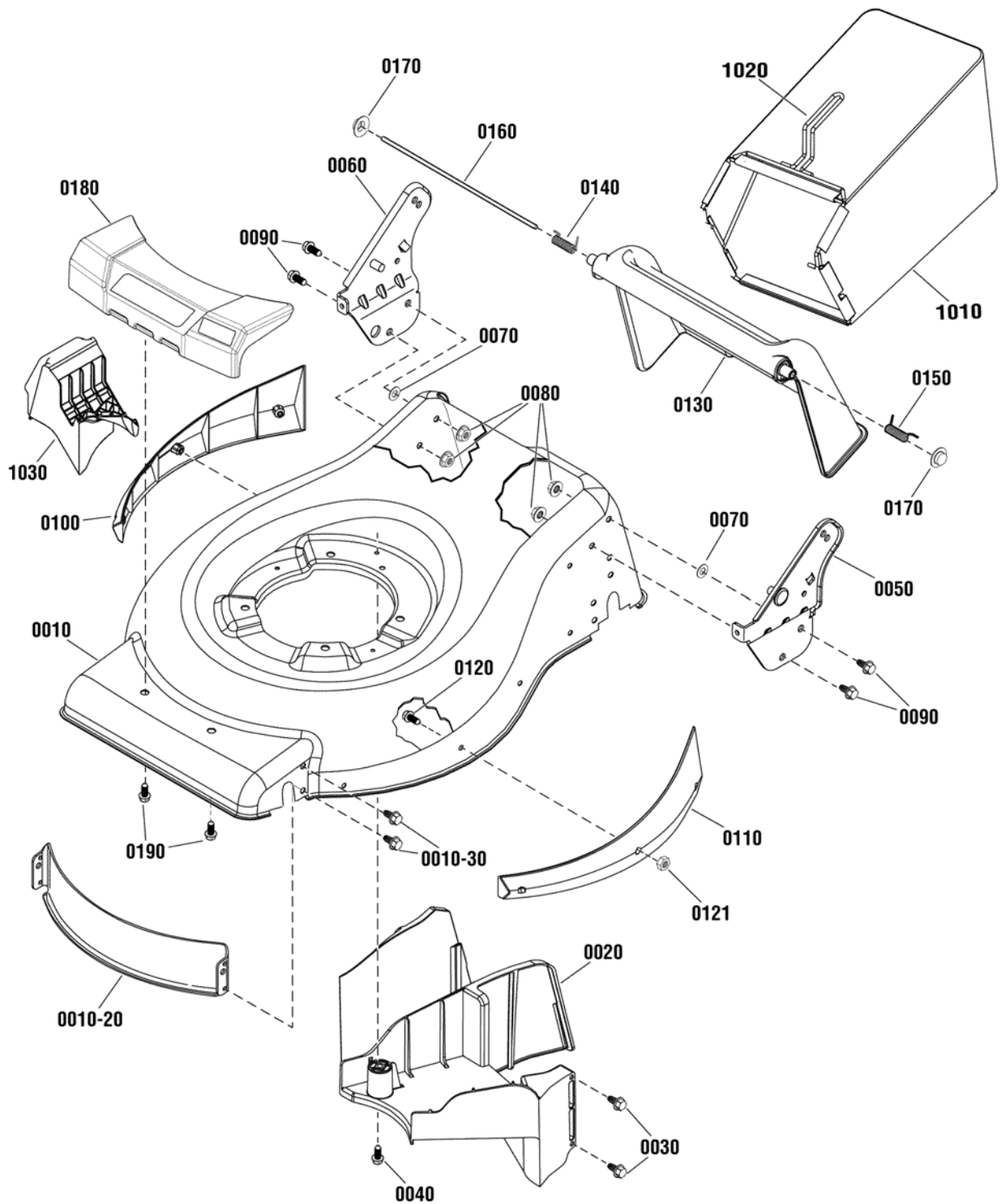
# Handle Group



---

<b>Item</b>	<b>Part No</b>	<b>Qty</b>	<b>Description</b>
0010	880571A	1	HANDLE, Lower
0020	881594A	1	HANDLE, Upper
0030	880457	1	TUBE, Foam
0040	7091714	2	BOLT, Carriage, Short Neck, 5/16-18 x 1, GR5
0050	7091189	2	BOLT, Carriage, Curved Head, 5/16-18 x 2
0060	7105085	4	KNOB, Handle
0100	881068A	1	BAIL, Engine Stop, With Bracket
0110	880328	1	COVER, SP Control
0120	880329	1	LEVER, SP Drive
0130	881140	1	CABLE, Drive
0140	880070	2	SCREW, Hi-Lo, 1/2
0150	880652	1	THROTTLE CONTROL (Use on 675 Series Models)
0150	881718	1	THROTTLE CONTROL Use on 850 Series Models)
0160	7028488	1	GUIDE, Rope
0170	880561	1	NUT, Nylock, 1/4-20
0180	880635	1	CONTROL PANEL
0500	7090391	4	WASHER, Internal Tooth, 5/16
1010	880819	4	FASTENER, Panel
1020	880664	2	SCREW, Pan Head, Taptite, 1/4-20 x 1/2
1070	7075308	1	KNOB, Throttle

**Footnotes:**

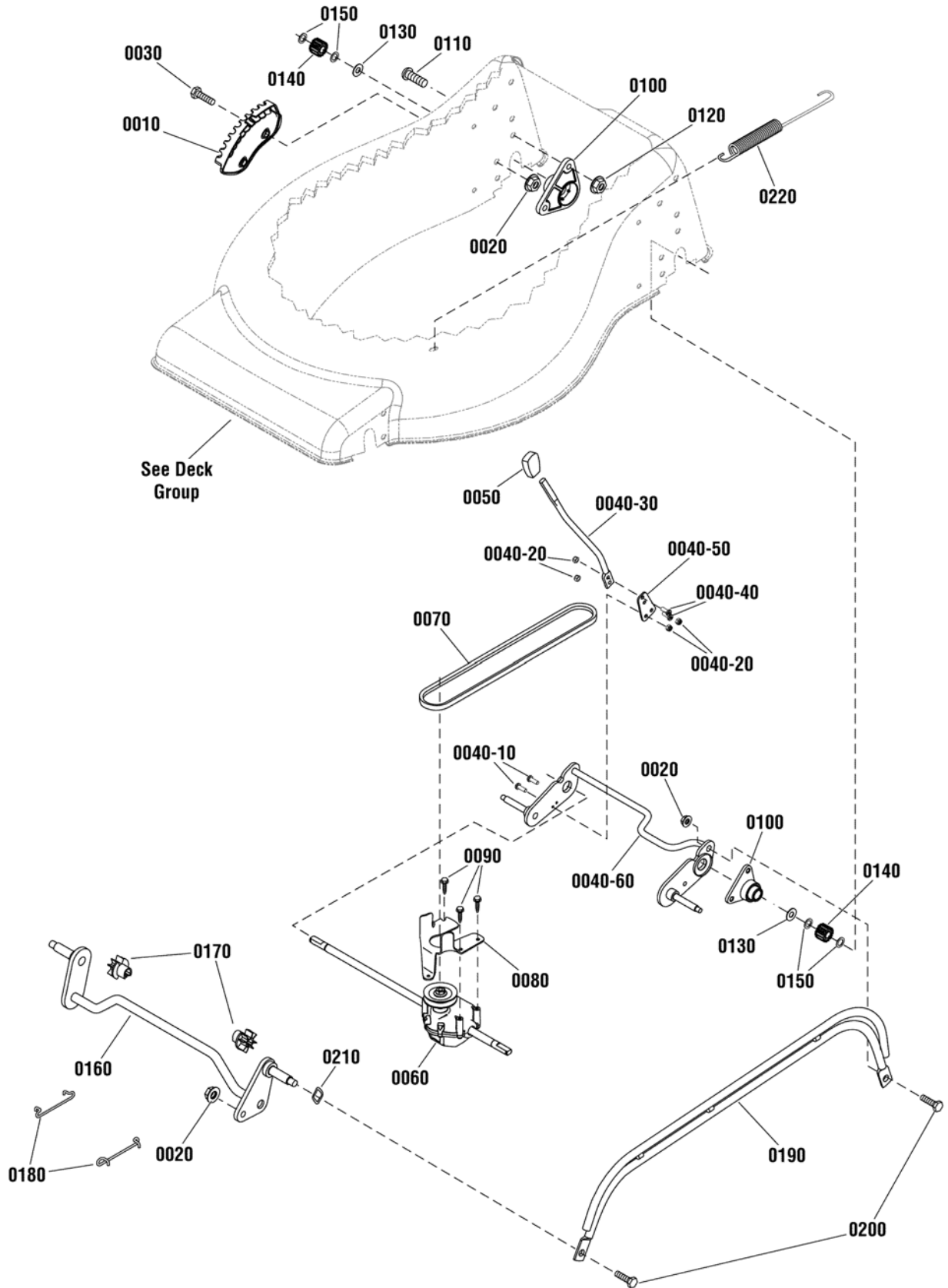


---

<b>Item</b>	<b>Part No</b>	<b>Qty</b>	<b>Description</b>
0010	881591D	1	MOWER HOUSING
0010-20	880784	1	BAFFLE, Front, 19"
0010-30	880664	4	SCREW, Pan Head, Taptite, 1/4-20 x 1/2
0020	880785	1	BAFFLE, Rear
0030	880804	5	SCREW, Hi-Lo, 1/4 x 3/4
0040	880664	1	SCREW, Pan Head, Taptite, 1/4-20 x 1/2
0050	880951A	1	BRACKET, Handle, LH
0060	880950A	1	BRACKET, Handle, RH
0070	880607	2	WASHER, Flat, .34 ID x .69 OD
0080	1739305	4	NUT, Hex Flange, ESNA, 5/16-18
0090	880748	4	SCREW, Hex Washer, 5/16-18 x 1/2
0100	881106	1	GUARD, Side, RH
0110	881109	1	GUARD, Side, LH
0120	880389	6	SCREW, Torx Head, M5 x .8 x 14mm
0121	880428	6	NUT, Nylock, M5 X 0.8
0130	880671	1	DOOR, Rear
0140	880942	1	SPRING, Torsion, RH
0150	880943	1	SPRING, Torsion, LH
0160	880214	1	ROD, Rear Door
0170	7091020	2	NUT, Push, 1/4
0180	881537	1	COVER, Nose
0190	7900018	2	SCREW, Torx, Hi-Lo,
1010	880965	1	BAG
1020	880963Z	1	FRAME, Bag
1030	880909	1	MULCH PLUG

**Footnotes:**

# Height of Cut Group



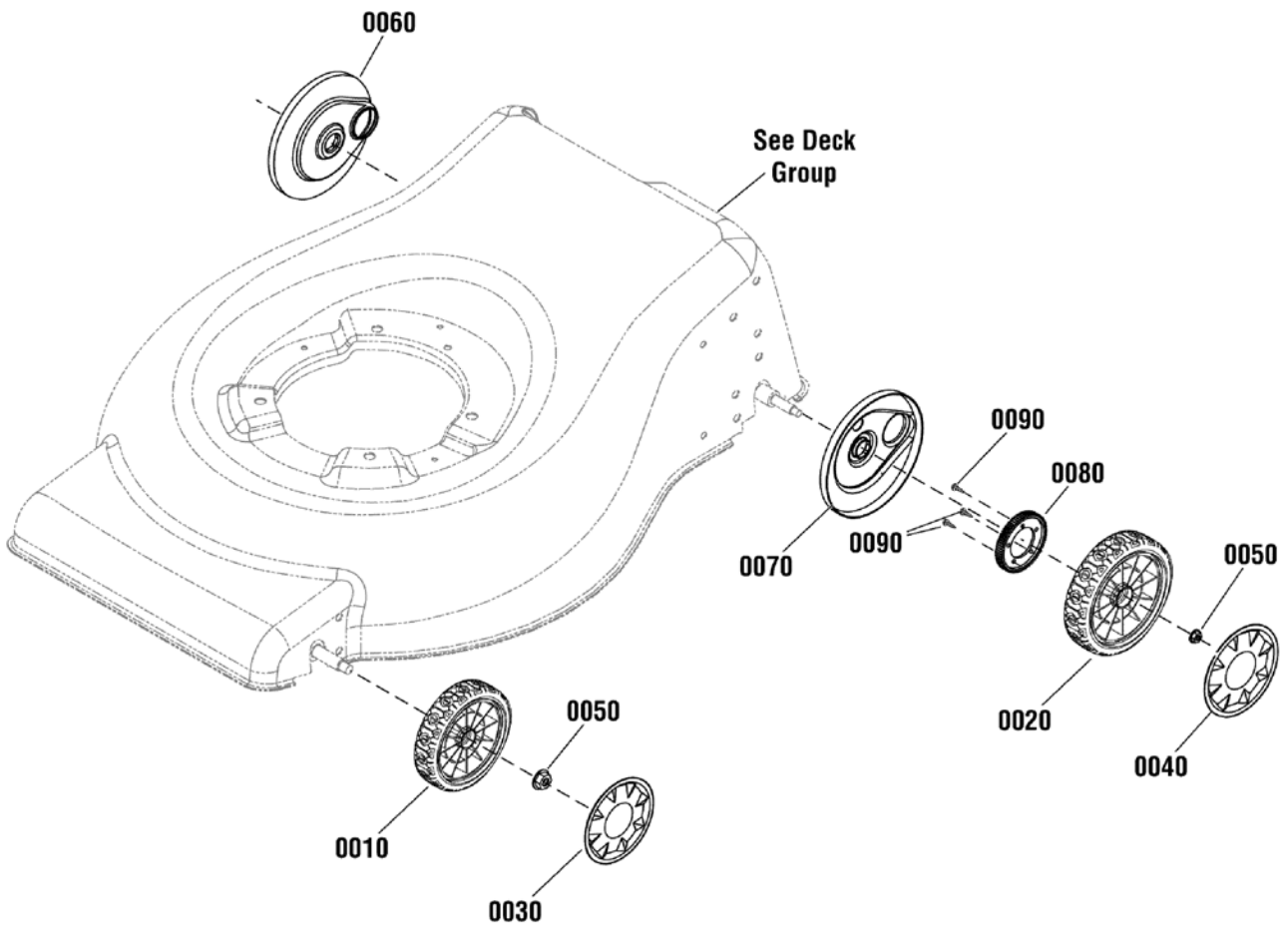


<b>Item</b>	<b>Part No</b>	<b>Qty</b>	<b>Description</b>
0010	880960	1	INDEX BRACKET, Standard Wheel
0010	880959	1	INDEX BRACKET, High Wheel
0020	1739305	4	NUT, Hex Flange, ESNA, 5/16-18
0030	22142	2	CAPSCREW, Hex Head, 5/16-18 x 3/4
0040-10	880339	2	SCREW, Torx Head
0040-20	880428	4	NUT, Nylock, M5 x 0.8
0040-30	880540	1	LEVER, Height Adjust
0040-40	880577	2	SCREW, Torx, M5 - 0.8 x 12.5
0040-50	880642	1	SPRING, Height Adjustment
0040-60	880829	1	CROSSBAR, Rear, Standard Wheel
0040-60	880855	1	CROSSBAR, Rear, Hi Wheel
0050	880325	1	KNOB, Adjuster, Red
0060	880341	1	TRANSMISSION, Standard Wheel
0060	880604	1	TRANSMISSION, Hi Wheel
0070	880268	1	BELT, Drive
0080	880282	1	GUIDE, Belt
0090	880760	3	SCREW, Plastite, #10-14 x 7/8
0100	880787	2	RETAINER ASSEMBLY, Ball Bearing
0110	880845	4	SCREW, Torx Truss Head, 1/4-20 x 5/8
0120	880859	4	NUT, Flange Lock, 1/4-20
0130	880324	2	WASHER, Thrust
0140	880226	2	GEAR, Pinion, 11 Teeth, Standard Wheel
0140	880527	2	GEAR, Pinion, 13 Teeth, High Wheel
0150	880269	4	RING, Retaining
0160	880053	1	CROSSBAR, Front Standard Wheel
0160	880550	1	CROSSBAR, Front, High Wheel
0170	880050	2	BUSHING, Front
0180	881163	2	SPRING CLIP, Crossbar
0190	880791A	1	LIFTER LINK, Standard Wheel
0190	881174A	1	LIFTER LINK, High Wheel
0200	880651	2	BOLT, Shoulder, 5/16-18
0210	7026257	1	WASHER, Wave, 1/2 (Used on High Wheel Models only)
0220	880052	1	SPRING, Extension

**Footnotes:**

**Wheels Group - Standard Wheel**

---

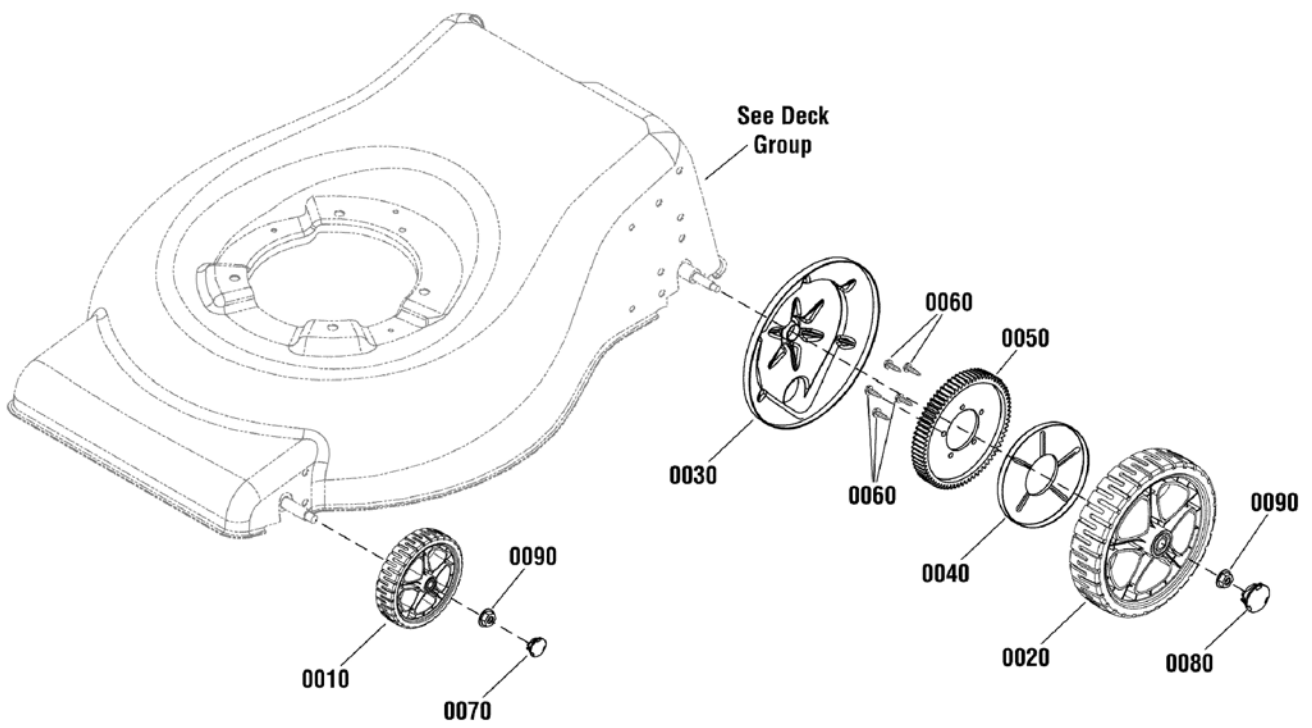


<b>Item</b>	<b>Part No</b>	<b>Qty</b>	<b>Description</b>
0010	880718	2	WHEEL ASSEMBLY, Front, 175mm
0020	880195	2	WHEEL ASSEMBLY, Rear, 200mm
0030	880656	2	HUBCAP, Front
0040	880657	2	HUBCAP, Rear
0050	881568	4	NUT, Hex Flange, Center Lock, 3/8-16
0060	880230	1	COVER, Dust, RH
0070	880640	1	COVER, Dust, LH
0080	880225	2	GEAR, Wheel
0090	880266	6	SCREW, Hex Head, Hi-Lo, 1/4-15 x 3/4

**Footnotes:**

**Wheels Group - High Wheel**

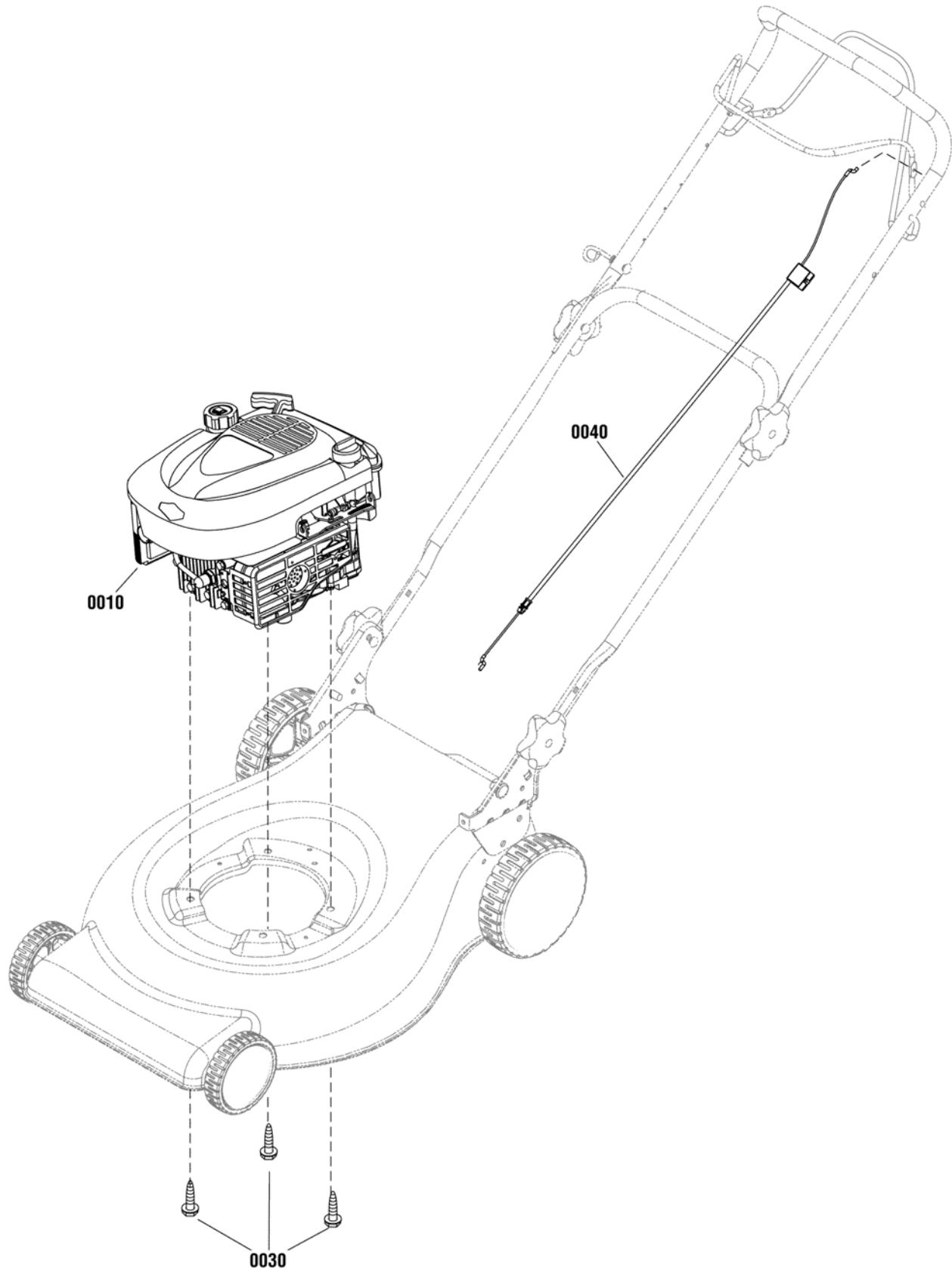
---



---

<b>Item</b>	<b>Part No</b>	<b>Qty</b>	<b>Description</b>
0010	880715	2	WHEEL ASSEMBLY, Front, 200mm
0020	880696	2	WHEEL ASSEMBLY, Rear, 305mm
0030	880528	2	DUST COVER, Rear
0040	880539	2	DUST COVER, Outer
0050	880526	2	GEAR, Wheel
0060	880266	10	SCREW, Hex Head, Hi-Lo, 1/4-15 x 3/4
0070	880701	2	HUBCAP, Front
0080	880700	2	HUBCAP, Rear
0090	881568	4	NUT, Hex Flange, Center Lock, 3/8-16

**Footnotes:**



---

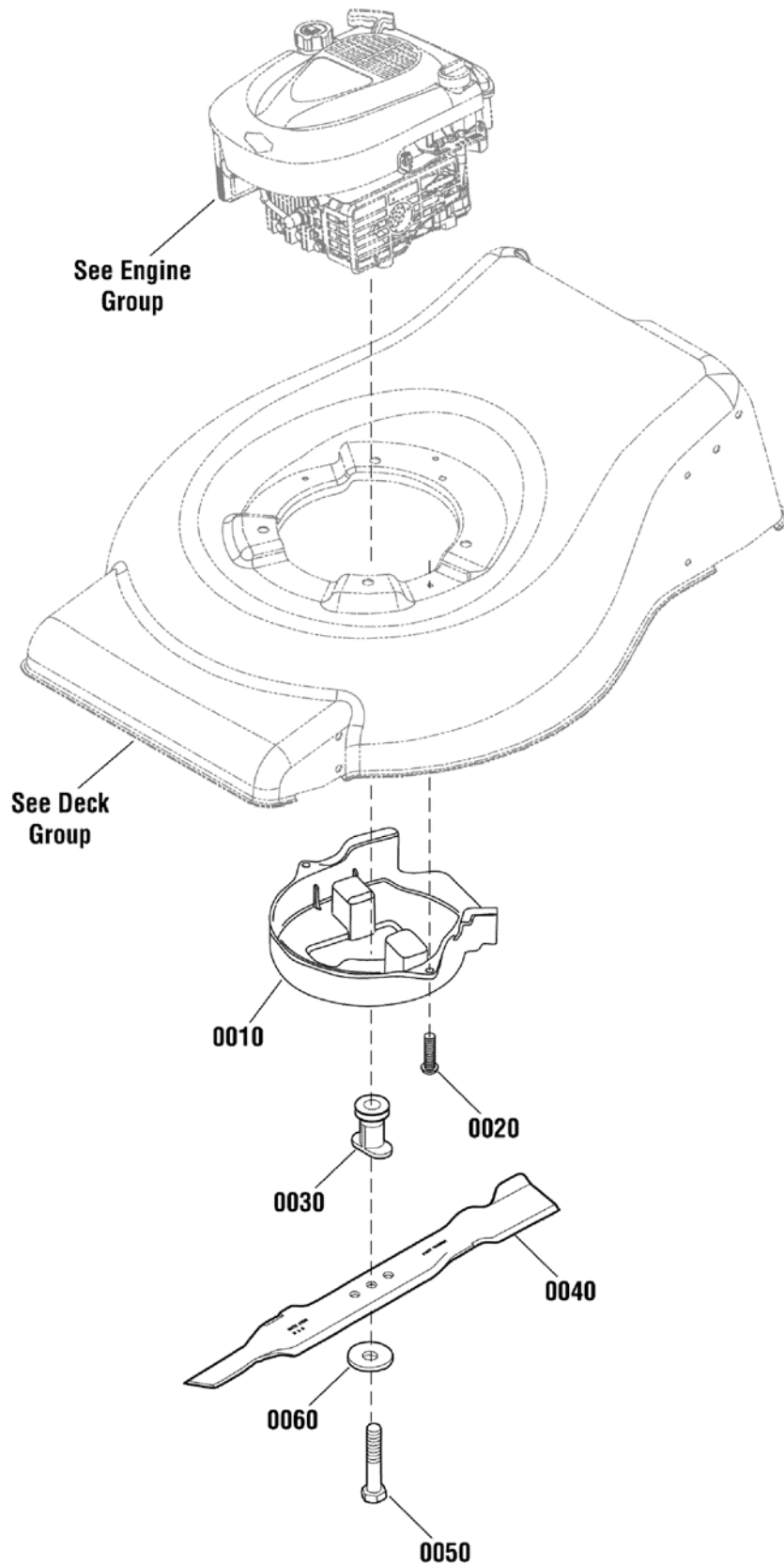
<b>Item</b>	<b>Part No</b>	<b>Qty</b>	<b>Description</b>
0010	126T02-6275-H1	1	* ENGINE, Briggs & Stratton 675 Series (Engine Model: 126T02-6275-H1)
0010	122R02-0125-H1	1	* ENGINE, Briggs & Stratton 850 Series (Engine Model: 122R02-0125-H1)
0030	7090324	3	SCREW, Hex Washer Head, 3/8-16 x 1
0040	880639	1	CABLE, Engine Stop

**Footnotes:**

Note\* To verify your specific engine model, please reference the ID Tag located on your engine. See your local Briggs & Stratton distributor for parts and service.

# Blade Group

---

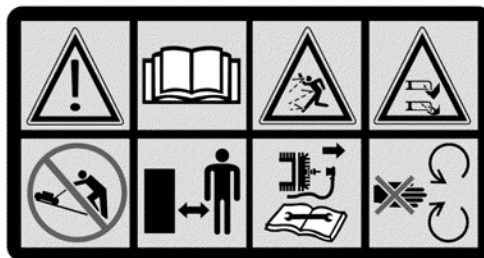
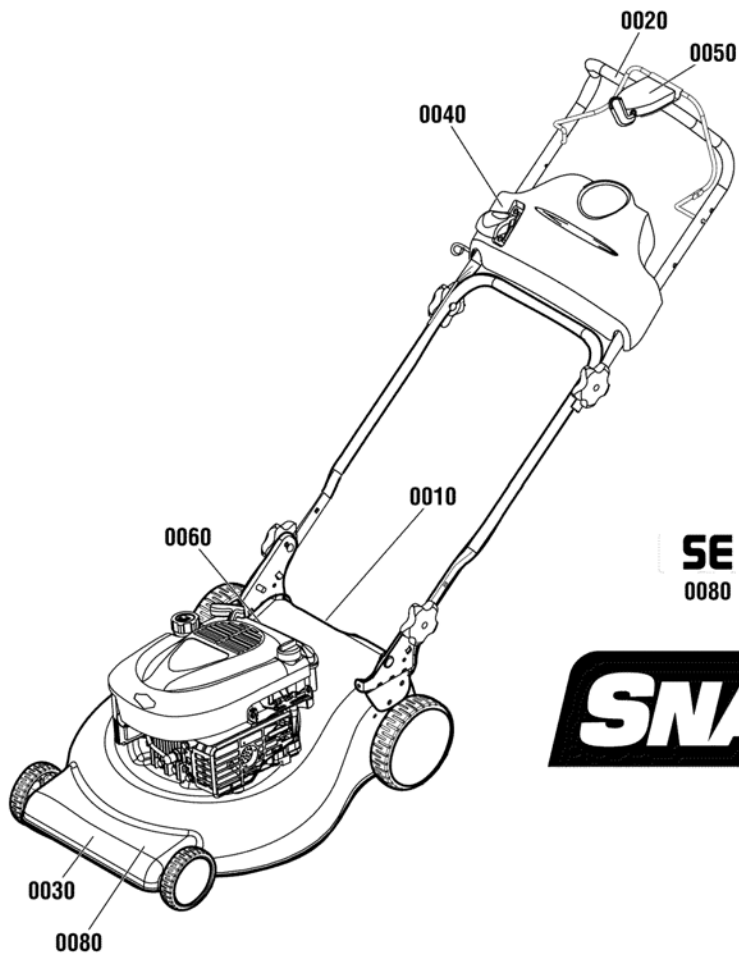




---

<b>Item</b>	<b>Part No</b>	<b>Qty</b>	<b>Description</b>
0010	880796	1	BELT GUIDE, Front
0020	880664	2	SCREW, 1/4-20 x 1/2
0030	880567	1	ADAPTER, Blade, Self Propelled
0040	880638	1	BLADE, 19"
0050	880034	1	BOLT
0060	721890	1	WASHER, Belleville

**Footnotes:**



0010



0020



0030



0040



0050

---

<b>Item</b>	<b>Part No</b>	<b>Qty</b>	<b>Description</b>
0010	880360	1	DECAL, Warning
0020	880545	1	DECAL, Instruction, Eng Lever
0030	7104148	1	DECAL, Logo
0040	880641	1	DECAL, Throttle Control
0050	881416	1	DECAL, Speed Control
0060	7103963	1	DECAL, Logo, Front Shroud
0080	7104874	1	DECAL, Front Cover "SE"

**Footnotes:**







# Hardware Identification & Torque Specifications

Torque Specification Chart								
FOR STANDARD METRIC MACHINE HARDWARE (Tolerance ± 20%)								
Property Class	5.6		8.8		10.9		12.9	
	Class 5.6		Class 8.8		Class 10.9		Class 12.9	
Size Of Hardware	in/lbs		in/lbs		in/lbs		in/lbs	
	ft/lbs	Nm.	ft/lbs	Nm.	ft/lbs	Nm.	ft/lbs	Nm.
M3	5.88	.56	13.44	1.28	19.2	1.80	22.92	2.15
M4	13.44	1.28	30.72	2.90	43.44	4.10	52.56	4.95
M5	26.4	2.50	60.96	5.75	5.97	8.10	7.15	9.7
M6	44.64	4.3	7.3	9.9	10.3	14	12.1	16.5
M7	5.2	7.1	12.1	16.5	16.9	23	19.9	27
M8	7.7	10.5	17.7	24	25	34	29	40
M10	15	21	35	48	50	67	59	81
M12	26	36	61	83	86.2	117	103	140
M14	42	58	101	132	136	185	162	220
M16	64	88	147	200	210	285	250	340
M18	89	121	202	275	287	390	346	470
M20	126	171	290	390	405	550	486	660
M22	169	230	390	530	559	745	656	890
M24	217	295	497	375	708	960	840	1140
M27	320	435	733	995	1032	1400	1239	1680
M30	435	590	995	1350	1401	1900	1681	2280
M33	590	800	1349	1830	1902	2580	2278	3090
M36	759	1030	1740	2360	2441	3310	2935	3980
M39	988	1340	2249	3050	3163	4290	3798	5150

Torque Specification Chart						
FOR STANDARD MACHINE HARDWARE (Tolerance ± 20%)						
Hardware Grade	No Marks		SAE Grade 5		SAE Grade 8	
	SAE Grade 2		SAE Grade 5		SAE Grade 8	
Size Of Hardware	in/lbs		in/lbs		in/lbs	
	ft/lbs	Nm.	ft/lbs	Nm.	ft/lbs	Nm.
8-32	19	2.1	30	3.4	41	4.6
8-36	20	2.3	31	3.5	43	4.9
10-24	27	3.1	43	4.9	60	6.8
10-32	31	3.5	49	5.5	68	7.7
1/4-20	66	7.6	8	10.9	12	16.3
1/4-28	76	8.6	10	13.6	14	19.0
5/16-18	11	15.0	17	23.1	25	34.0
5/16-24	12	16.3	19	25.8	29	34.0
3/8-16	20	27.2	30	40.8	45	61.2
3/8-24	23	31.3	35	47.6	50	68.0
7/16-14	30	40.8	50	68.0	70	95.2
7/16-20	35	47.6	55	74.8	80	108.8
1/2-13	50	68.0	75	102.0	110	149.6
1/2-20	55	74.8	90	122.4	120	163.2
9/16-12	65	88.4	110	149.6	150	204.0
9/16-18	75	102.0	120	163.2	170	231.2
5/8-11	90	122.4	150	204.0	220	299.2
5/8-18	100	136	180	244.8	240	326.4
3/4-10	160	217.6	260	353.6	386	525.0
3/4-16	180	244.8	300	408.0	420	571.2
7/8-9	140	190.4	400	544.0	600	816.0
7/8-14	155	210.8	440	598.4	660	897.6
1-8	220	299.2	580	788.8	900	1,244.0
1-12	240	326.4	640	870.4	1,000	1,360.0

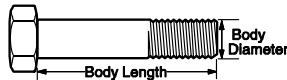
The guides and ruler furnished below are designed to help you select the appropriate hardware.



Nut, M8

Thread Diameter (mm)  
Inside Diameter (in)    Threads per inch

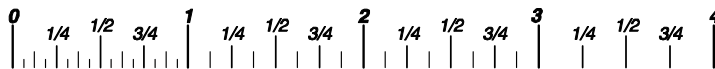
Nut, 1/2-16



Screw, M8- 1.25 x 25

Thread Diameter (mm)    Distance between threads (mm)    Body Length (mm)  
Body Diameter    Threads per inch    Body Length (in)

Screw, 1/2- 16 x 2



## Standard Hardware Sizing

When a washer or nut is identified as 1/2" (M8), this is the *Nominal size*, meaning the *inside diameter* is 1/2 inch (8mm metric thread diameter); if a second number is present it represents the *threads per inch* (distance between threads).

When bolt or capscrew is identified as 1/2 - 16 x 2" (M8 - 1.25 x 50), this means the *Nominal size*, or body diameter is 1/2 inch (8mm metric thread diameter), the second number, 16, represents the *threads per inch*, (1.25 thread diameter). The final number is the body length of the bolt or screw, 2 inches (50mm).

## NOTES

- These torque values are to be used for all hardware excluding: locknuts, self-tapping screws, thread forming screws, sheet metal screws and socket head setscrews.
- Recommended seating torque values for locknuts:
  - for prevailing torque locknuts - use 65% of grade 5 torques.
  - for flange whizlock nuts and screws - use 135% of grade 5 torques.
- Unless otherwise noted on assembly drawings, all torque values must meet this specification.

## Common Hardware Types

Hex Head Capscrew



Washer



Carriage Bolt



Lockwasher



Hex Nut



## Wrench & Fastener Size Guide

1/4" Bolt or Nut Wrench—7/16"	5/16" Bolt or Nut Wrench—1/2"	3/8" Bolt or Nut Wrench—9/16"	7/16" Bolt or Nut Wrench (Bolt)—5/8" Wrench (Nut)—11/16"	1/2" Bolt or Nut Wrench—3/4"
M6 Bolt or Nut Wrench—10mm	M8 Bolt or Nut Wrench—13mm	M10 Bolt or Nut Wrench—17mm	M12 Bolt or Nut Wrench—19mm	M14 Bolt or Nut Wrench—22mm

*Parts Manual for*

# **SNAPPER®**

## **19" STEEL DECK REAR DISCHARGE EUROPEAN SELF-PROPELLED WALK BEHIND MOWERS**

IT IS THE POLICY OF BRIGGS & STRATTON CORP TO IMPROVE ITS PRODUCTS WHENEVER IT IS POSSIBLE AND PRACTICAL TO DO SO. WE RESERVE THE RIGHT TO MAKE CHANGES OR ADD IMPROVEMENTS AT ANY TIME WITHOUT INCURRING ANY OBLIGATION TO MAKE SUCH CHANGES ON PRODUCTS

**Briggs & Stratton Yard Power Products Group**

535 Macon Road  
McDonough, GA, 30253 U.S.A.  
800-935-2967

[www.snapper.com](http://www.snapper.com)

Copyright © 2011 Briggs & Stratton Corporation  
Milwaukee, WI USA. All Rights Reserved

**Manual No. 7105602**

**Revision: - 12/19/2011**