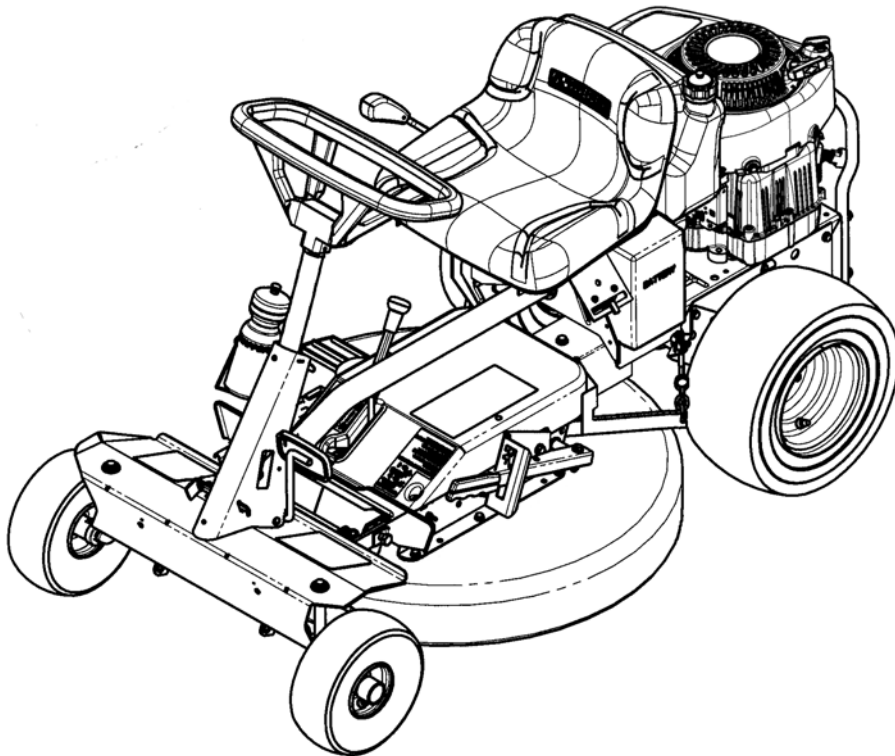


Parts Manual for
SNAPPER®

**25" & 28" REAR ENGINE RIDER
EUROPEAN
SERIES 23**

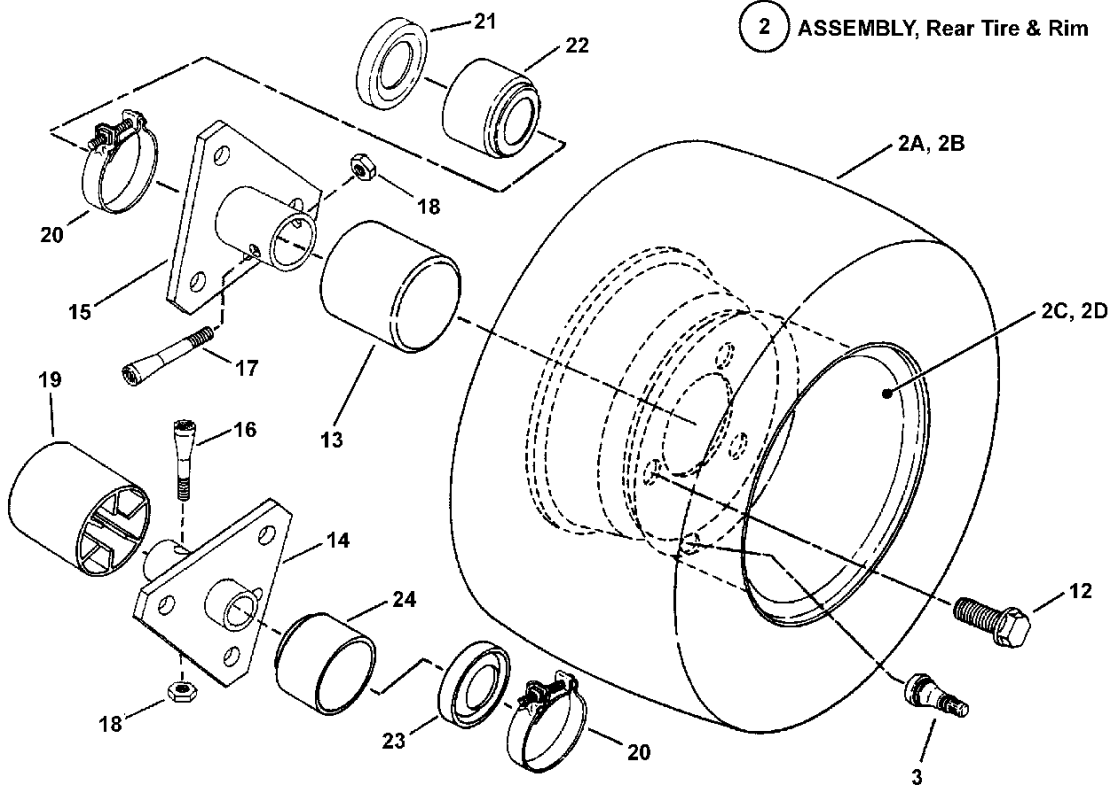
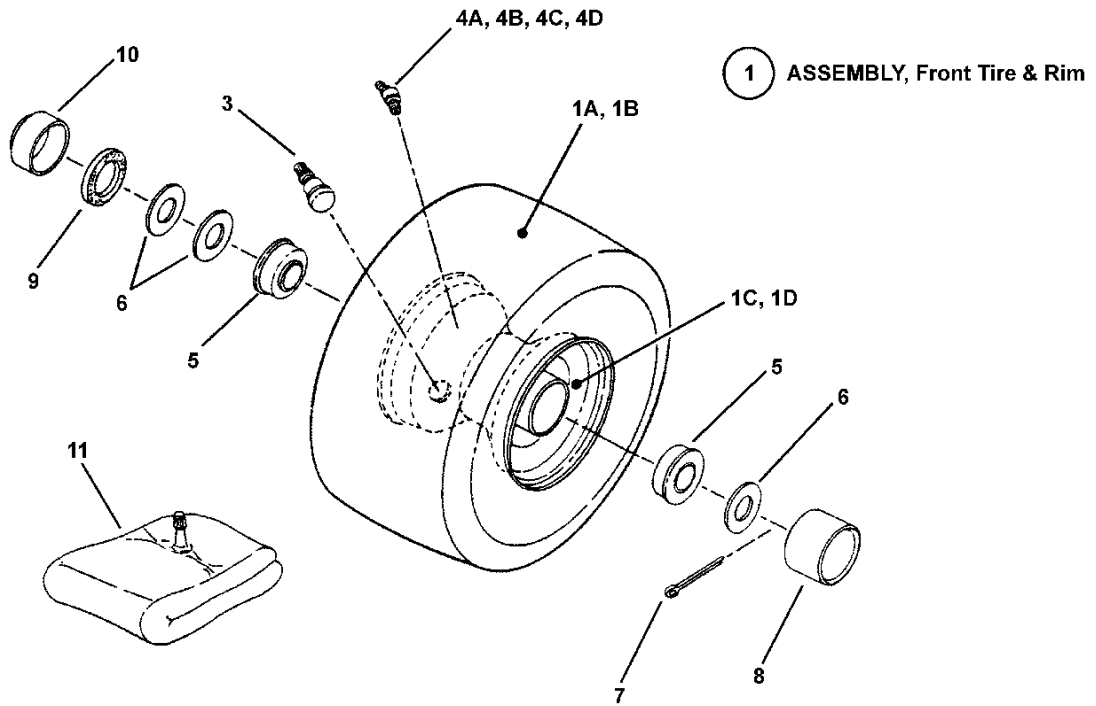


<i>Model No.</i>	<i>Description</i>
85636	E251023BVE
7084651	E2512523BVE
7800116	E2512523BVE
7800139	E2512523BVE
7800499	E2512523BVE
7800653	E2512523BVE
7800657	E2512523BVE
84651	E2512523BVE
84886	E281123BVE
85626	E2812523BVE
7085626	E2812523BVE
7800500	E2812523BVE
7800117	E2812523BVE
7800658	E2812523BVE
84887	E281323BVE
85627	E281323BVE
85686	E2813523BVE
7085686	E2813523BVE
7800118	E2813523BVE
7800501	E2813523BVE
7800655	E2813523BVE
7800659	E2813523BVE
7800790	E2814523BVE

Not for
Reproduction

PAGE	GROUP
4	Wheels, Front & Rear Group
6	Front End Assembly Group
8	Engine, Muffler, Drive Disc & Fuel Tank Group
12	Main Case, LH Fender & Yoke Lift Group
16	Differential, RH Fender & Gear Shift Group
20	Primary Chain Case & Smooth Clutch Group
22	Mower Deck, Blade & Spindle Group
26	Deck Rails & Lift Group
30	Mower Belt, Brake & Interlock Group
32	Decal Group
34	French Guard Group
36	Electrical Group (for 10, 11, 12.5 & 13HP Briggs)
38	Electrical Group (for 13.5 & 14.5 HP Briggs)
40	Wiring Schematic (for 10, 11, 12.5 & 13HP Briggs)
42	Wiring Schematic (for 13.5 & 14.5 HP Briggs)
44	Accessories & Attachments

Not for
Reproduction

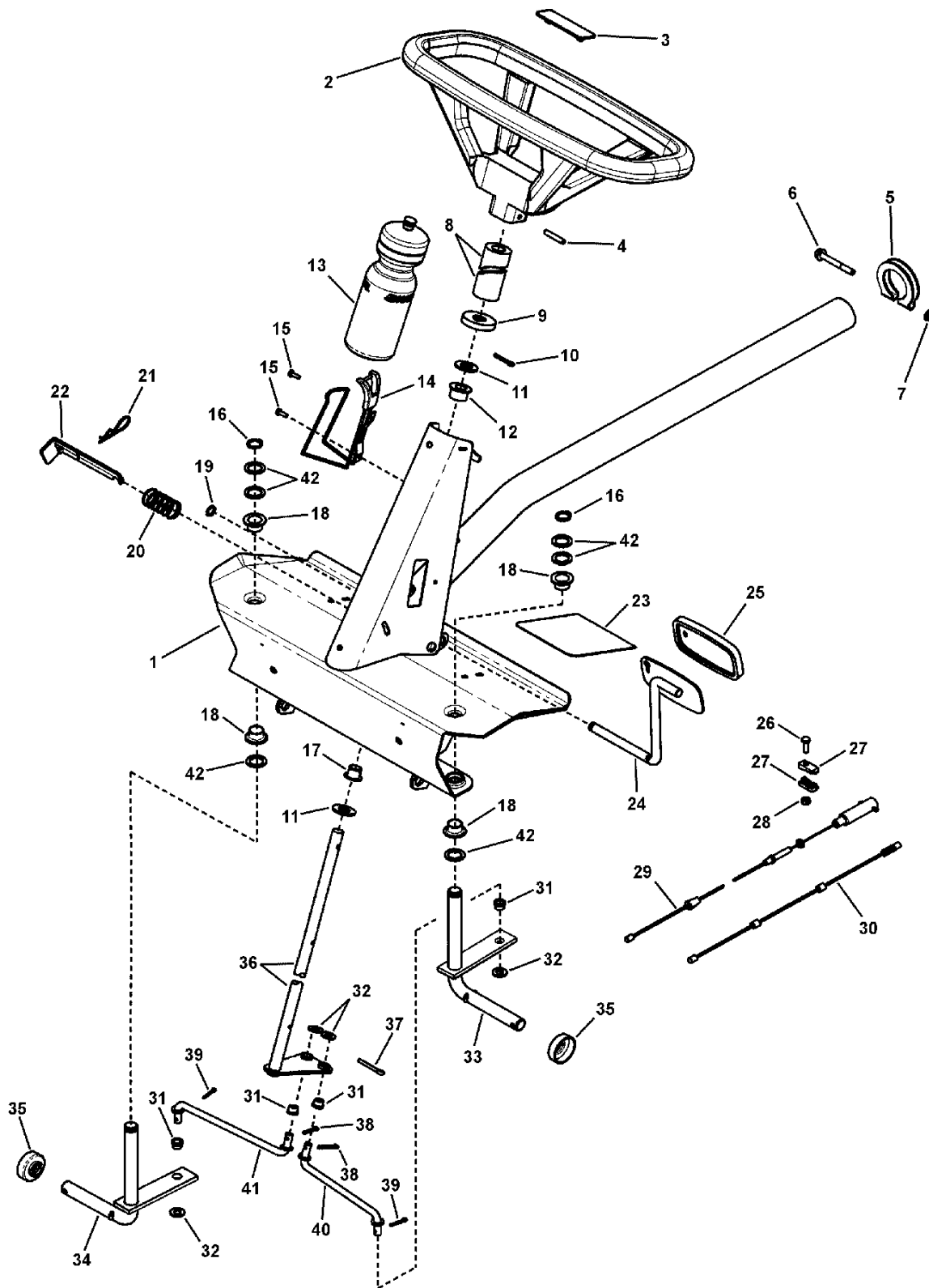


Item	Part No	Qty	Description
1	7058943	2	ASSEMBLY, Front Tire & Rim (Complete) (Includes Items 1A, 1C, 3, 4A, & 5)
1	7058944	2	ASSEMBLY, Front Tire & Rim (Complete) (Includes Items 1B, 1D, 3, 4D & 5)
1A	7073563	1	TIRE, 11 x 4.00-4 (Kenda) (per front tire ass'y.)
1B	7073564	1	TIRE, 11 x 4.10-4, (Carlisle) (per front tire ass'y.)
1C	7017146	1	RIM, (For 4.10/3.50 x 4 Tire) (per front tire ass'y.)
1D	7073588	1	RIM (per front tire ass'y.)
2	7058951	2	ASSEMBLY, Rear Tire & Rim (Includes Items 2A, 2C & 3)
2	7052269	2	ASSEMBLY, Rear Tire & Rim (25" Models) (Includes Items 2B, 2D & 3)
2A	7073584	1	TIRE, 16-6.50 x 8 (28" & 33" Models) (per rear tire ass'y)
2B	7023889	1	TIRE, 16 x 4.80-8 Turf (25" Models) (per rear tire ass'y)
2C	7012163	1	RIM, Extra Wide (For 16/7.50 x 8 Tire) (Was 7017147)
2D	7017145	1	RIM (4.80/4.00X8) 3 LUG (per rear tire ass'y)
3	7012234	1	VALVE STEM, Snap In
4A	7014669	1	* LUBE Fitting, Straight (for 3/16" hole)
4B	7076998	1	* LUBE Fitting, Straight (for 1/4" hole)
4C	7010909	1	* LUBE Fitting, 90 Degree, Ball Check (for 1/4" hole)
4D	7104428	1	* LUBE Fitting, 90 Degree, Ball Check (for 5/16" hole)
5	7011807	2	BALL BEARING, Flange (3/4" I.D.)
6	7010935	3	WASHER, .77 x 1.13 x .06 Flat
7	7091516	1	COTTER PIN, 5/32 x 1"
8	7011022	1	HUB CAP
9	7011032	1	FELT SEAL
10	7031038	1	CAP, Dust
11	7010821	1	TUBE, Inner (For 4.10/3.50 x 4 Tire)
12	7091502	3	BOLT, 1/2-20 x 3/4" Lug, GR 5
13	7023895	1	HUB CAP, R.H. (1.35" ID x 2.25") (Short Axle)
14	7040434	1	HUB, Wheel LH, 3 Hole 3/4" ID (per left rear tire ass'y)
15	7040433	1	HUB, Wheel RH, 3 Hole 1" ID (per right rear tire ass'y)
16	7011035	1	BOLT, 5/16-24 x 1-5/8" Tapered (Left Hand) (per left rear tire ass'y)
17	7011013	1	BOLT, 5/16-24 x 2" Tapered (Right Hand) (per right rear tire ass'y)
18	7092062	1	NUT, Hex Lock 5/16F GR.C YZ (was 7011201 (per rear tire ass'y))
19	7023522	1	HUB CAP, L. H. (.975" ID x 2.25") (Long Axle) (per left rear tire ass'y)
20	7012332	2	CLAMP, Boot, 2" (used on older models)
21	7011817	1	SEAL, 1.22" ID x 1.875" OD (used on older models)
22	7031732	1	CAP, Seal 1.0" ID x 1.67" OD (used on older models)
23	7014662	1	SEAL, OIL .750" ID x 1.832" OD (used on older models)
24	7014658	1	CAP, Seal 3/4" ID x 1.875" OD (used on older models)

Footnotes:

NOTE* Different size holes used, measure hole for proper fit.

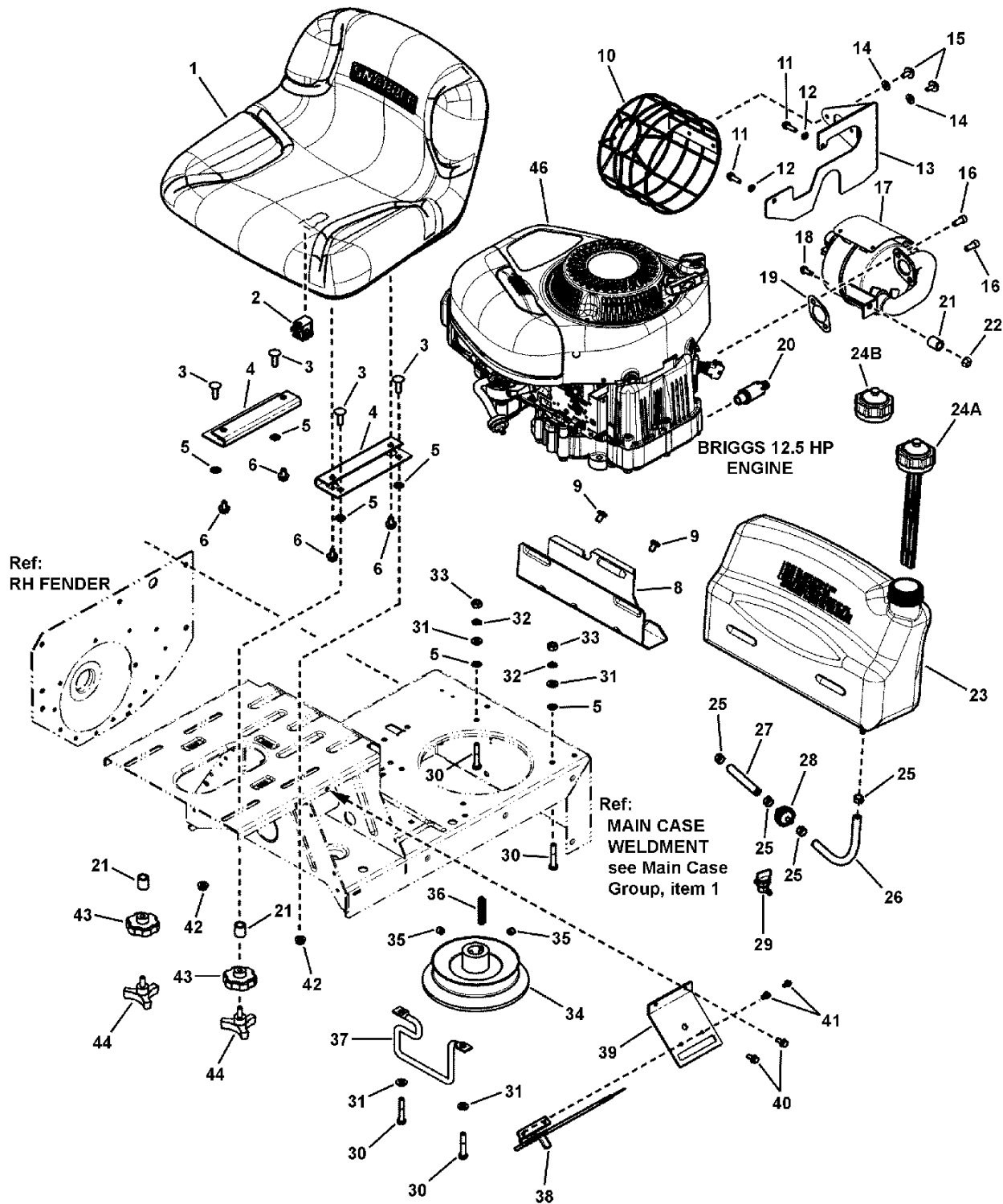
Front End Assembly Group



Item	Part No	Qty	Description
1	7054378	1	WELDMENT, Front Axle, Narrow
2	7058030	1	ASSEMBLY, Steering Wheel (for 5/8" shaft) (Includes item 3)
3	7023781	1	LOGO, Steering Wheel
4	7013862	1	ROLL PIN, 1/4 x 1-1/2"
5	7031100	1	TUBE CLAMP
6	7090358	1	SCREW, 5/16-24 x 2-1/2" Hex Head Cap, GR 5
7	7010969	1	NUT, 5/16-24 Flange Lock (Large)
8	7023667	1	FOAM COVER, Steering Shaft
9	7023671	1	COVER, Steering Shaft
10	7090296	1	PIN, 3/16 x 1" Cotter
11	7090183	2	WASHER, .66 x 1.31 x .09 Flat
12	7046158	1	BUSHING, Nylon
13	7074561	1	BOTTLE, Water
14	7074560	1	HOLDER, Bottle (Wire)
15	7090913	2	SCREW, #10-24 x 1/2" Hex Washer Self-Tap (Torx)
16	7010746	2	RING, 5/8" External Retaining
17	7010694	1	BUSHING, Nylon
18	7010986	4	BEARING, Nylon
19	7010776	1	RING, 1/2" External Retaining (Heavy Duty)
20	7015444	1	SPRING, Parking Brake Latch
21	7011714	1	HAIR PIN 2-1/4"
22	7038243D	1	LATCH, Parking Brake
23	7014049	2	FOOT PAD, Short (5.5" x 4.7")
24	7047888BM	1	WELDMENT, Clutch Pedal
25	7011815	1	PAD, Pedal
26	7091495	1	SCREW, 1/4-20 x 3/4" Hex Head Cap, GR 5
27	7034174	2	CONNECTOR, Cable
28	7090372	1	NUT, 1/4-20 Hex Center Lock, GR 5 or B
29	7101192	1	CABLE, Brake, Snap-In (replaces 7072648 (voided))
30	7022449	1	CABLE, Clutch/Brake (54.32" long)
31	7013321	4	BUSHING, Tie Rod
32	7090122	4	WASHER, 3/8" Flat SAE (Was 7091514)
33	7041687	1	WELDMENT, King Pin, Left Hand
34	7041688	1	WELDMENT, King Pin, Right Hand
35	7031038	2	CAP, Dust
36	7046232	1	WELDMENT, Steering Shaft
37	7090753	1	PIN, 3/16 x 1-1/2" Cotter
38	7090364	2	PIN, 5/32 x 1" Cotter
39	7090365	2	PIN, 1/8 x 3/4" Cotter
40	7013023	1	TIE ROD, Left Hand (7.41" long)
41	7012933	1	TIE ROD, Right Hand (7.41" long)
42	7010935	6	WASHER, .77 x 1.13 x .06 Flat

Footnotes:

Engine, Muffler, Drive Disc & Fuel Tank Group



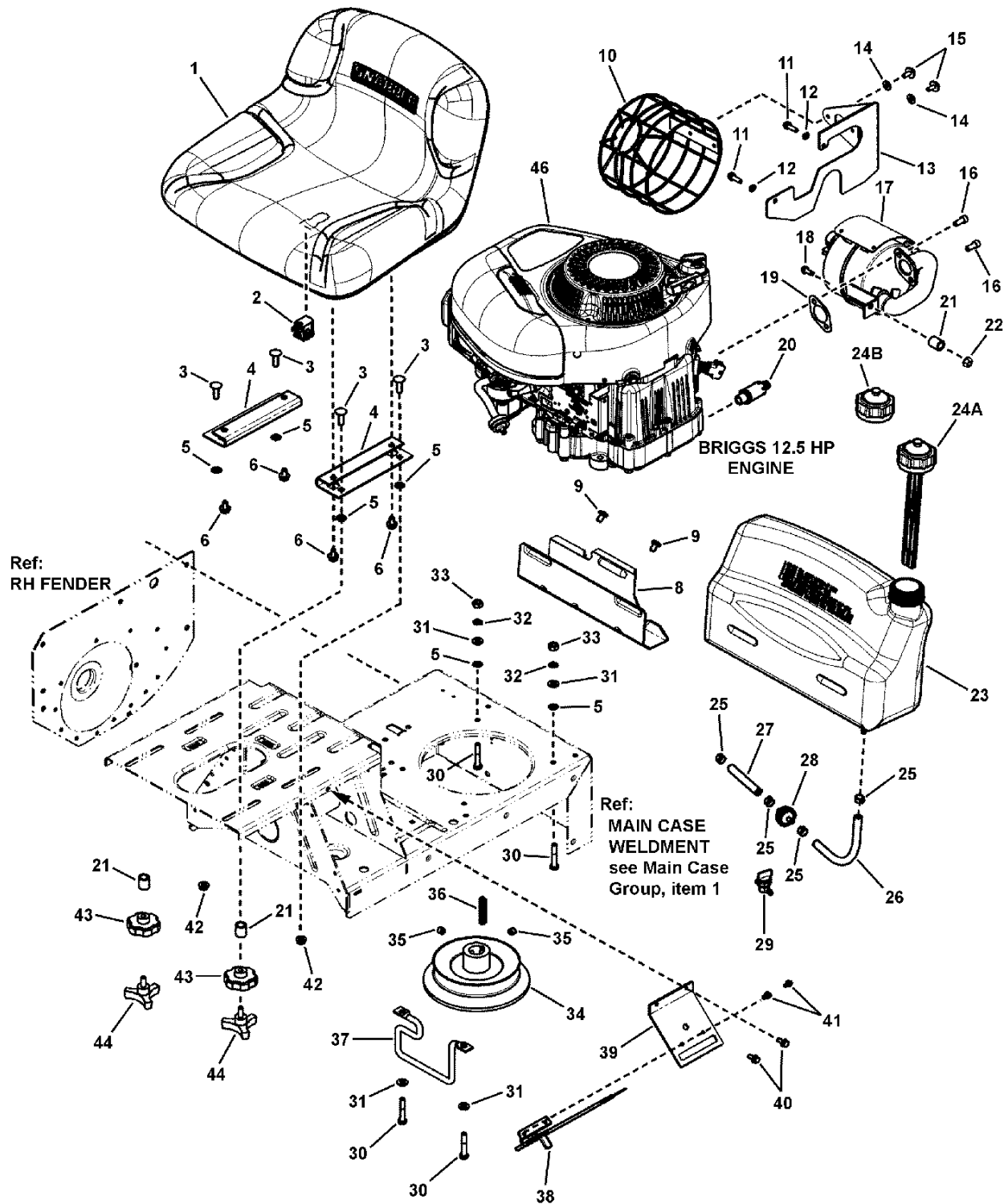
Engine, Muffler, Drive Disc & Fuel Tank Group

Item	Part No	Qty	Description
1	7075071	1	SEAT, Operator (11.58" tall) (Michigan V-2400 Series)
1	7075376	1	SEAT, Operator (9.30" tall) (Michigan V-2300 Series) (used on E25 models & 7084886)
2	7023354	1	SWITCH, Seat (NC) (Gray)
3	7091303	4	BOLT, 5/16-18 x 1" Square Neck Carriage, GR 5 YZ
4	7075018BM	2	BRACKET, Seat
5	7011791	8	RETAINER, 5/16" Bolt
6	7091038	4	BOLT, 5/16-18 x 1/2" Hex Flange Nyloc
8	7033377BM	1	BRACKET, Fuel Tank (Rear)
9	7091542	2	SCREW, 5/16-18 x 1/2" Pan Head Self-Tap (Torx #T-40)
10	7024356	1	MUFFLER GUARD, Kohler
11	7090290	2	SCREW, 1/4-20 x 3/4" Hex Washer Self-Tap
12	7090052	2	WASHER, 1/4" Split Lock
13	7074965	1	HEAT SHIELD, Muffler
14	7091294	2	WASHER, .28 x .63 x .06 Flat, GR 5
15	7091016	2	SCREW, 1/4-20 x 5/8" Hex Head w/Free Spinning Washer
16	7091738	2	SET SCREW, 5/16-18 x 3/4" Socket Head, GR 8
17	7074453	1	MUFFLER w/Heat Shield (Briggs 11 & 13HP)
18	7090362	1	SCREW, 1/4-20 x 5/8" Hex Washer Self-Tap
19	7015352	1	GASKET, Exhaust
20	7027972	1	ASSEMBLY, Oil Valve
21	7013849	3	SPACER, .33 x .63 x .156
22	7091065	1	NUT, 1/4-20 Hex Flange lock
23	7052435	1	ASSEMBLY, Fuel Tank with Gauge (Includes Cap, item 24A)
23	7051905	1	ASSEMBLY, Fuel Tank (Includes Cap, item 24B) (used on 10HP Models)
24A	7019377	1	CAP, Fuel Tank w/Gage
24B	7012515	1	CAP, Fuel Tank
25	7029900	4	CLAMP, Fuel Line (.490 X .31)
26	1734994	1	HOSE, Fuel (1/4" I.D. x 8-1/2" long) (used on 7800718 model)
27	7077351	1	HOSE, Fuel (1/4" I.D. x 3-1/2" long)
28	7014359	1	FILTER, Fuel (In-Line)
29	7024507	1	VALVE, Fuel Shut-Off (Accessory)
30	7091513	4	SCREW, 5/16-24 x 1-3/4" Hex Head Cap, GR 5
31	7090188	6	WASHER, 11/32" Flat
32	7091315	4	WASHER, .32 x .58 x .08 Split Lock
33	7091297	4	NUT, 5/16-24 Hex, GR 5
34	7072658	1	WELDMENT, 5.75" O.D. Drive Disc
35	7090132	2	SET SCREW, HRSS, 3/8-16 x 3/8"
36	7010210	1	KEY, 1/4" Square x 2" Long
37	7017653BZ	1	BELT GUIDE, 25"/28"
38	7022751	1	CONTROL, Throttle (23.6" long) (Briggs Engines)
39	7033470	1	PLATE, Throttle Control
40	7090539	2	SCREW, 1/4-20 x 1/2" Hex Washer Self-Tap
41	7090913	2	SCREW, #10-24 x 1/2" Hex Washer Self-Tap (Torx)

Footnotes:

Note: * Purchase engine parts from engine manufacture dealer.

Engine, Muffler, Drive Disc & Fuel Tank Group



Engine, Muffler, Drive Disc & Fuel Tank Group

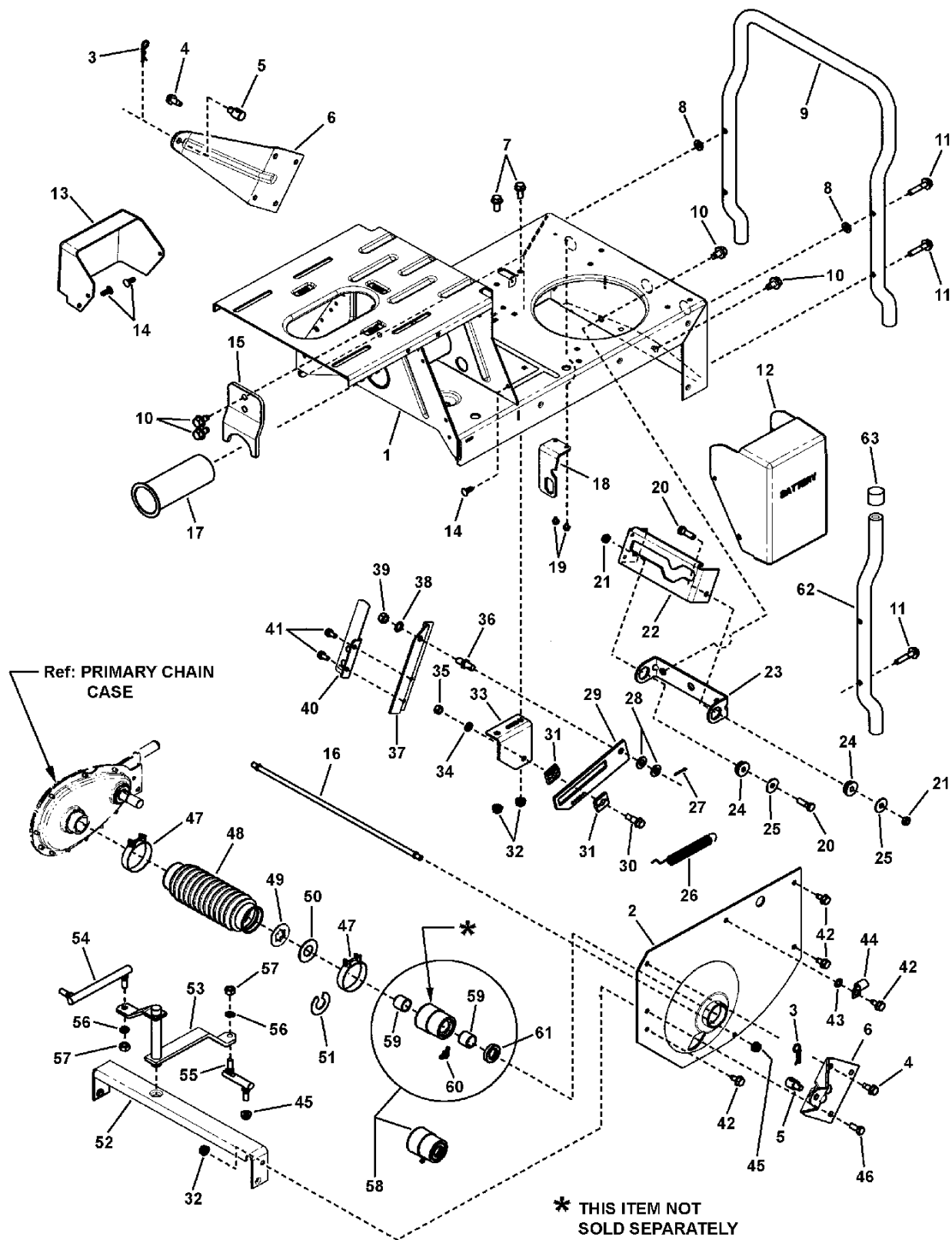
Item	Part No	Qty	Description
42	7090672	2	NUT, 5/16-18 Hex Flange Top Lock
43	7023735	2	KNOB, Fluted, 5/16-18 internal thread (2.15 O.D.)
44	7023191	2	KNOB, 3-Prong, 5/16-18 x 3/4" external thread
--	7091576	1	NUT, 1/4-20 Hex, GR 5 or B (not shown) (attaches to starter terminal)
46	219907-0123-E1	1	* ENGINE, 12.5HP Briggs Intek OHV (used on 7084651, 7085626, 84651, 85626 & 85636)
46	219907-0125-B1	1	* ENGINE, 12.5 Gross H.P. Briggs (used on 7800117 & 7800500)
46	219907-0126-B1	1	* ENGINE, 12.5 Gross H.P. Briggs (used on 7800499)
46	219907-0172-E1	1	* ENGINE, 12.5 Gross H.P. Briggs (used on 7800116 & 7800139)
46	219977-0129-B1	1	* ENGINE, 12.5HP Briggs Euro (w/oil filter) (used on 7800658)
46	219977-0167-B1	1	* ENGINE, 12.5HP Briggs Euro (w/oil filter) (used on 7800653 & 7800657)
46	21A907-0123-E1	1	* ENGINE, 11HP Briggs (used on 84886)
46	21A907-0123-E1	1	* ENGINE, 12HP Briggs (used on 84886)
46	21A907-0125-E1	1	* ENGINE, 13HP Briggs (used on 84887 & 85627)
46	21B907-0139-E1	1	* ENGINE, 13.5HP Briggs Intek OHV (used on 7085686, 7800118, & 85686)
46	21B977-0164-B1	1	* ENGINE, 13.5HP Briggs Euro (w/oil filter) (used on 7800501)
46	21B977-0167-B1	1	* ENGINE, 13.5HP Briggs Euro (w/oil filter) (used on 7800655 & 7800659)
46	TBD	1	* ENGINE, 14.5HP Briggs Euro (w/oil filter) (used on 7800790)

Not for
Reproduction

Footnotes:

Note: * Purchase engine parts from engine manufacture dealer.

Main Case, LH Fender & Yoke Lift Group

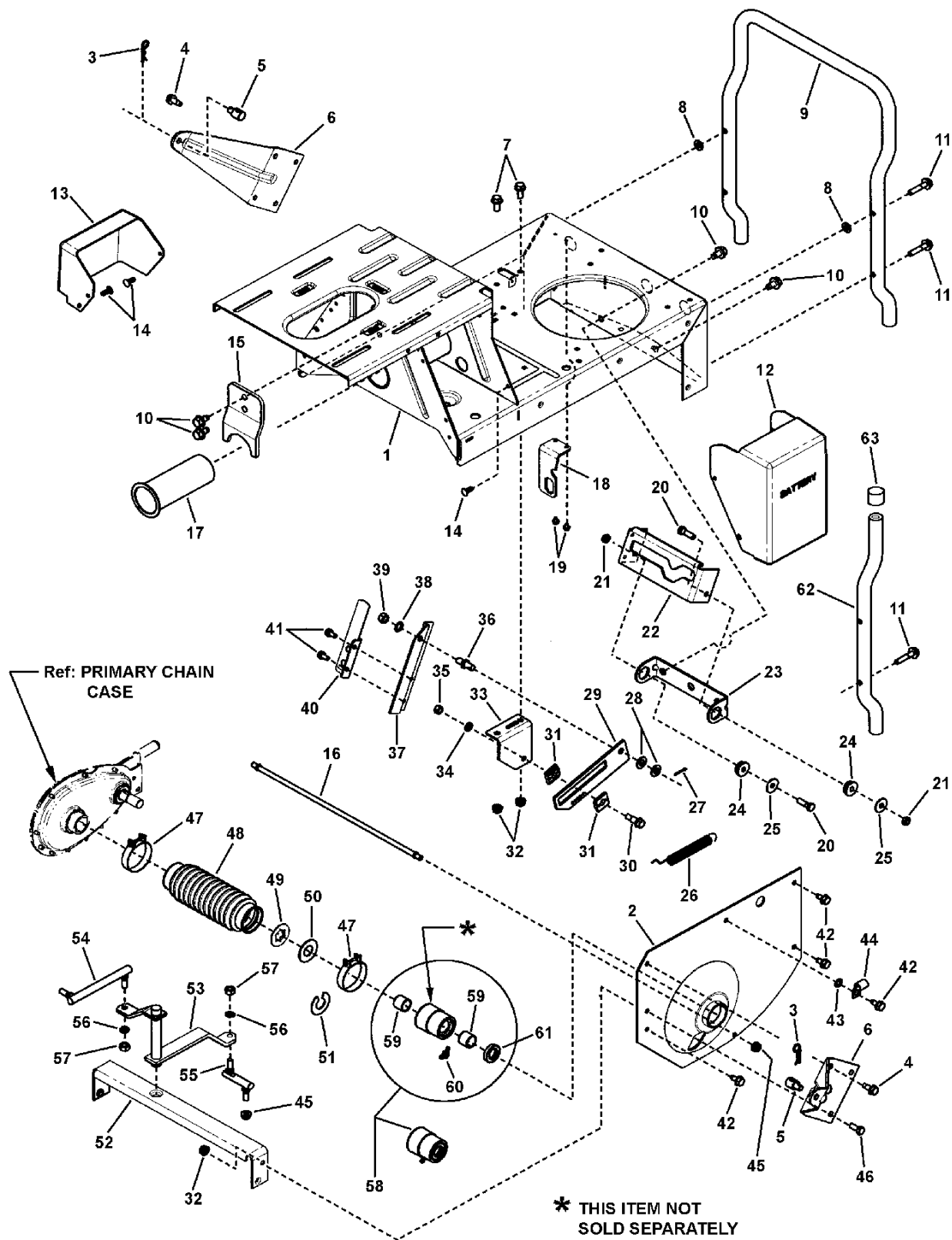


Main Case, LH Fender & Yoke Lift Group

Item	Part No	Qty	Description
1	7053697	1	WELDMENT, Main Case (Standard)
2	7037285	1	FENDER, Left Hand (1.628" I. D. Hole)
3	7091503	2	HAIR PIN, 3/32 x 1-1/2"
4	7090793	4	SCREW, 5/16-18 x 3/4" Hex Washer Self-Tap
5	7028200	2	SWIVEL, Adjustable
6	7034299	2	WING, Rear
7	7090595	2	BOLT, 5/16-18 x 3/4" Hex Flange Lock, GR 5
8	7090188	2	WASHER, 11/32" flat
9	7036367	1	BUMPER, (1-Piece)
10	7091198	2	SCREW, 3/8-16 x 5/8" Hex Washer Self-Tap
11	7091506	4	SCREW, 5/16-18 x 1-1/2" Hex Washer Self-Tap (Was 7090484)
12	7028990	1	COVER, Battery
13	7073268	1	COVER, Solenoid
14	7091272	7	FASTENER, 1/4" Ratchet
15	7074210	1	BRACKET, Belt Adjuster
16	7011070	1	TIE ROD (5/16-24 thread- both ends)
17	7074650	1	BUSHING, Pivot (replaces 7022509 (voided))
18	7073735	1	BRACKET, Switch
19	7090981	2	SCREW, #10-32 x 1/4" Hex Washer Self-Tap
20	7090238	4	SCREW, 5/16-24 x 1" Hex Head Cap, GR 5
21	7011201	2	NUT, 5/16-24 Hex Center Lock
22	7046162	1	LIFT, Yoke
23	7033291	1	COLLAR, Yoke
24	7011048	2	BEARING, Yoke
25	7011763	2	FENDER WASHER, 5/16"
26	7013885	1	SPRING, Clutch & Brake
27	7090037	1	PIN, 3/32 x 3/4" Cotter
28	7090122	2	WASHER, 3/8" Flat SAE
29	7047190	1	BRACKET, Slide
30	7014664	1	BOLT, 5/16-18 Shoulder
31	7014663	2	SLIDE HALF
32	7090585	6	NUT, 5/16-18 Hex Flange Lock, GR 5
33	7047189	1	BRACKET, Drive Support
34	7090187	1	WASHER, 5/16" Split Lock
35	7091511	1	NUT, 5/16-18 Hex, GR 5 or B (Was 7090196)
36	7015464	1	STUD, Clutch Link (3/8-24 thread)
37	7073733	1	ARM, Yoke
38	7090390	1	WASHER, 3/8" Internal Tooth Lock
39	7091630	1	NUT, 3/8-24 Hex, GR 5 or B (Was 7090155)
40	7059068	1	ASSEMBLY, Leaf Spring
41	7090539	2	SCREW, 1/4-20 x 1/2" Hex Washer Self-Tap
42	7090361	14	SCREW, 5/16-18 x 5/8" Hex Washer Self-Tap (or 7091867)
43	7090391	1	WASHER, 5/16" Internal Tooth Lock
44	7012652	1	CLIP, Wire

Footnotes:

Main Case, LH Fender & Yoke Lift Group



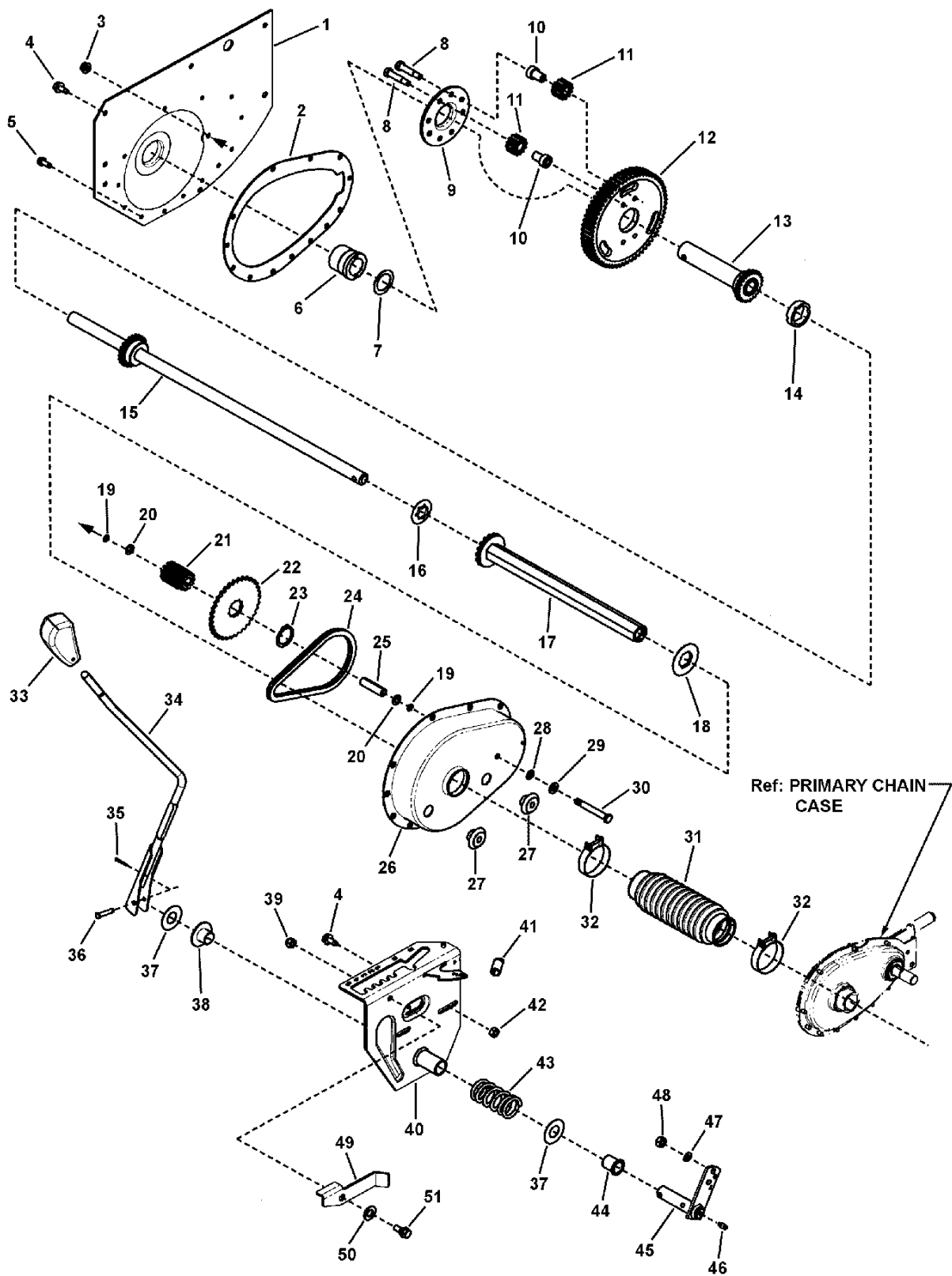
Main Case, LH Fender & Yoke Lift Group

Item	Part No	Qty	Description
45	7010969	1	NUT, 5/16-24 Flange Lock (Large)
46	7091318	1	SCREW, 5/16-18 x 3/4" Hex Head Cap, GR 5 (Was 7090206)
47	7012332	2	BOOT CLAMP, 2"
48	7075115	1	BOOT, Rear Axle, Thick Flange
49	7011072	1	WASHER, Thrust
50	7011071	1	THRUST WASHER
51	7012271	1	WASHER, Shim (or quantity as required)
52	7033799	1	CROSS BRACE
53	7041384	1	WELDMENT, Shift Arm
54	7023676	1	SHIFT LINK, Long (5/16-24 both ends)
55	7011018	1	SHIFT LINK, Short (5/16-24 thread)
56	7091315	7	WASHER, .32 x .58 x .08 Split Lock
57	7091297	7	NUT, 5/16-24 Hex, GR 5
58	7052827	1	ASSEMBLY, DX Bearing
59	7074182	2	BEARING, DX
60	7075848	1	FITTING, Lube, 45 Degree, 3/16" w/Hex (long shank) (or 7013324)
61	7074500	1	SEAL, Axle (Dust/Grease)
62	7030798Z	2	BUMPER, Rear
63	7010153	2	CAP, Bumper

Not for
Reproduction

Footnotes:

Differential, RH Fender & Gear Shift Group



Differential, RH Fender & Gear Shift Group

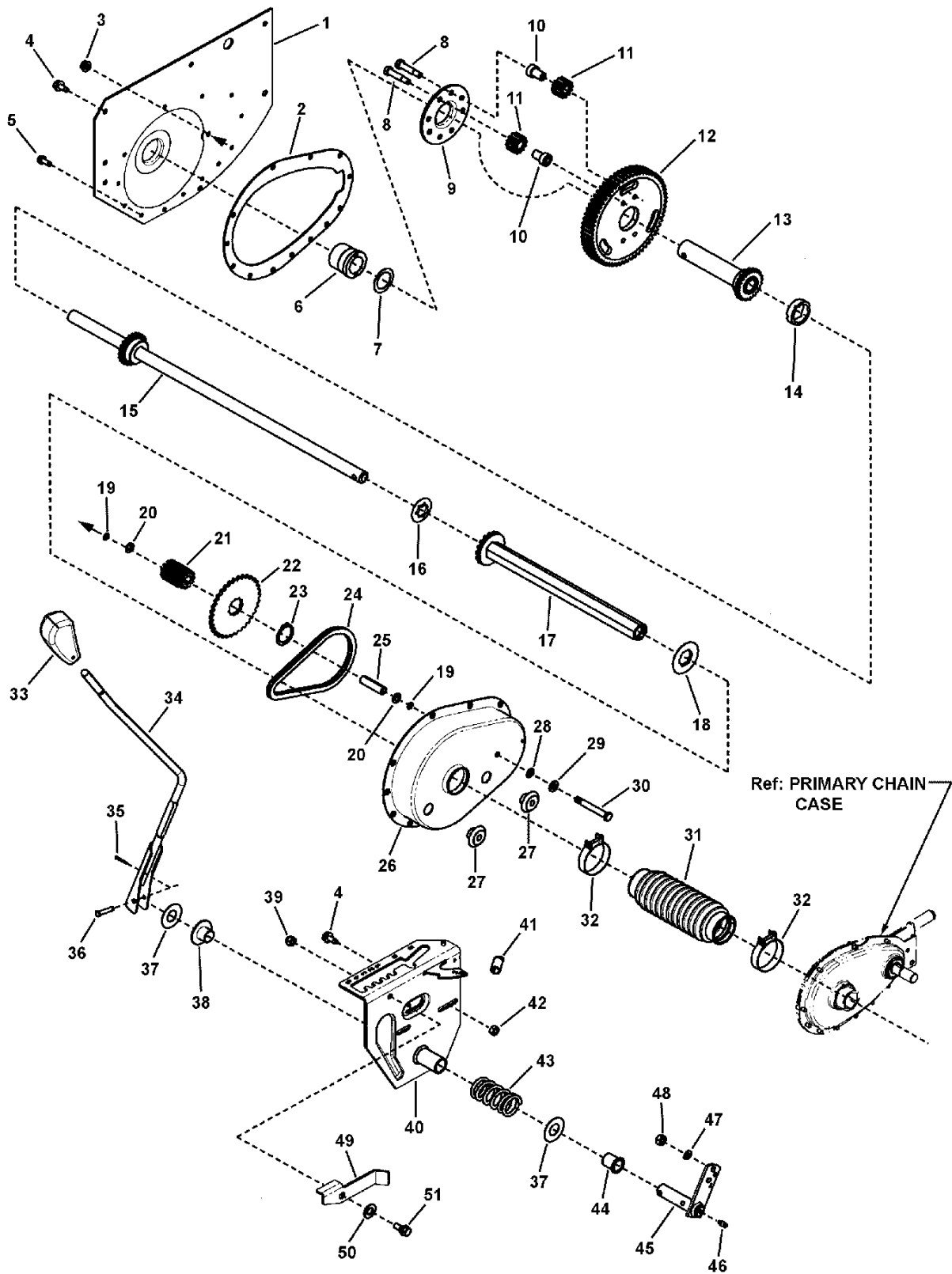
Item	Part No	Qty	Description
1	7037280	1	FENDER, Right Hand (1.62" Dia. Hole)
2	7028762	1	GASKET, Transmission Case
3	7010969	1	NUT, 5/16-24 Flange Lock (Large)
4	7090361	10	SCREW, 5/16-18 x 5/8" Hex Washer Self-Tap
5	7091819	13	SCREW, 1/4-20 x 5/8" Hex Washer Head Self-Tap (Was 7090362)
6	7012296	1	BEARING, Axle (R. H. Fender)
7	7031079	1	WASHER, Thrust
8	7012333	4	BOLT, 5/16-24 x 1-5/8" Hex Special Lock (Vibresist) (replace after each use)
9	7038067	1	PLATE, Differential (Note: 4 holes offset - align properly to prevent binding.)
10	7022115	4	SPACER, Pinion
11	7021127	4	GEAR, Differential Pinion (12T 12P)
12	7021158	1	GEAR, 63 Tooth 10 Pitch (4 Hole)
13	7057398	1	ASSEMBLY, Short Axle, 23T (Includes Gear)
14	7074431	1	SPACER, Differential (1.25" ID x .423 Wide) (Was 7011026)
15	7075479	1	KIT, Long Axle (Includes welded Gear and item #24) (Was 7047763)
16	7011072	1	WASHER, Thrust
17	7051584	1	* ASSEMBLY, Drive Hex Tube
18	7010988	1	WASHER, Nylon
19	7011156	2	O-RING, 5/16"
20	7011782	2	WASHER, 5/16" Belleville
21	7200128	1	GEAR, 11 Tooth, 10 Pitch (replaces 7010964)
22	7021129	1	SPROCKET, 34T, 3/8P
23	7010965	1	RING, 1-3/16" External Retaining
24	7010941	1	CHAIN, 46 Pitch (#35 Endless)
25	7021128	1	SPACER, Differential Case
26	7037279	1	CASE, Transmission
27	7011024	1	PLUG, 1/2" Cup Insert
28	7090395	1	WASHER, 5/16" External Tooth Lock
29	7090188	1	WASHER, .34 x .69 x .08 Flat
30	7011042	1	SCREW, 5/16-24 x 2-5/8" Hex Head Cap
31	7075115	1	BOOT, Oil Seal (Short Axle)
32	7012332	2	BOOT CLAMP, 2"
33	7023656	1	GRIP, Shift Handle
34	7059212	1	WELDMENT, Shift Handle
35	7091597	1	PIN, 3/32 x 3/4" Cotter (Was 7090037)
36	7023914	1	PIN, 1/4 x 1-3/4" Tapered Clevis
37	7031036	2	WASHER, Thrust
38	7019245	1	BUSHING, 3/4 x 1.62 Flange (Nylon)
39	7091298	1	NUT, 5/16-18 Hex Nyloc
40	7058763	1	* ASSEMBLY, Speed Adjustment Latch
41	7026292	1	SPRING (part of Speed Adjustment Latch Ass'y)
42	7091511	1	NUT, 5/16-18 Hex, GR 5 or B (Was 7090196)
43	7010754	1	SPRING, Shift Detent
44	7019246	1	BUSHING, 3/4 x I.O. Flange (Nylon)

Footnotes:

Note: * Assembly includes two bearings inside hex tube (p/n 7015140, not shown) & one nylon washer (p/n 7010988, item 18).

NOTE: * Assembly is comprised of: Shift Detent Weldment (7041232), Shoulder Rivet (7029022), Reverse Stop (7073218) & item 41.

Differential, RH Fender & Gear Shift Group



Differential, RH Fender & Gear Shift Group

Item	Part No	Qty	Description
45	7043201	1	WELDMENT, Arm, Shift Handle (w/grease ftg. Hole)
46	7010817	1	LUBE FITTING, 3/16" Press-In
47	7091315	1	WASHER, .32 x .58 x .08 Split Lock
48	7091297	1	NUT, 5/16-24 Hex, GR 5
49	7073289	1	LEVER, Over-Ride
50	7091595	1	WASHER, .47 x .92 x .065 Flat
51	7015761	1	SHOULDER BOLT, 5/16-18
--	7061017		GREASE, Transmission, 00, (24 oz. Required)(Not shown)
--	7060411		KIT, Differential (4 Pinion)(Includes items 1 thru 30)
--	7060412		KIT, Long & Short Axle (Includes items 23, 24, & 25)

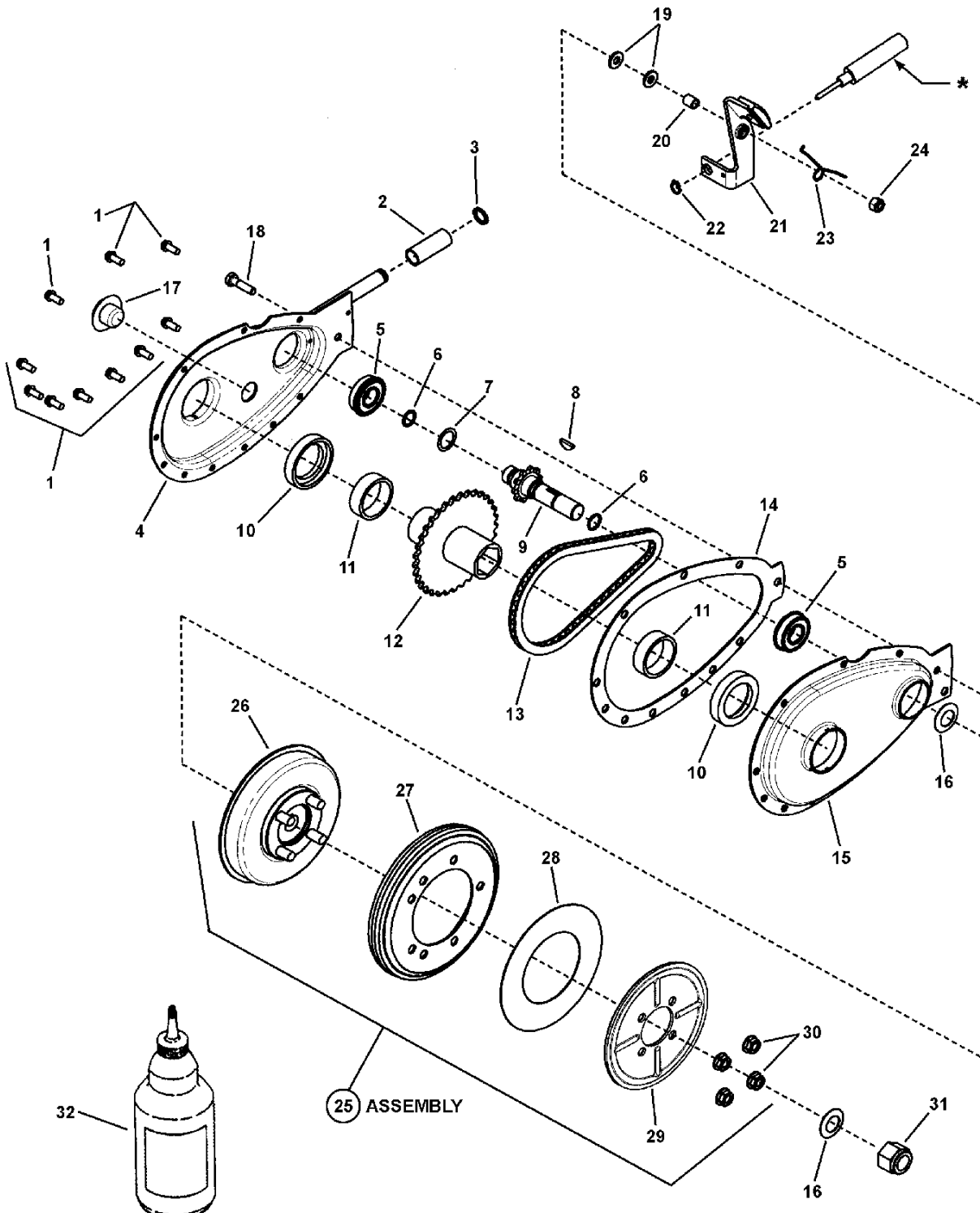
Not for
Reproduction

Footnotes:

Note: * Assembly includes two bearings inside hex tube (p/n 7015140, not shown) & one nylon washer (p/n 7010988, item 18).

NOTE: * Assembly is comprised of: Shift Detent Weldment (7041232), Shoulder Rivet (7029022), Reverse Stop (7073218) & item 41.

Primary Chain Case & Smooth Clutch Group



* Ref: BRAKE CABLE; see Front End Ass'y Group, item 24

Primary Chain Case & Smooth Clutch Group

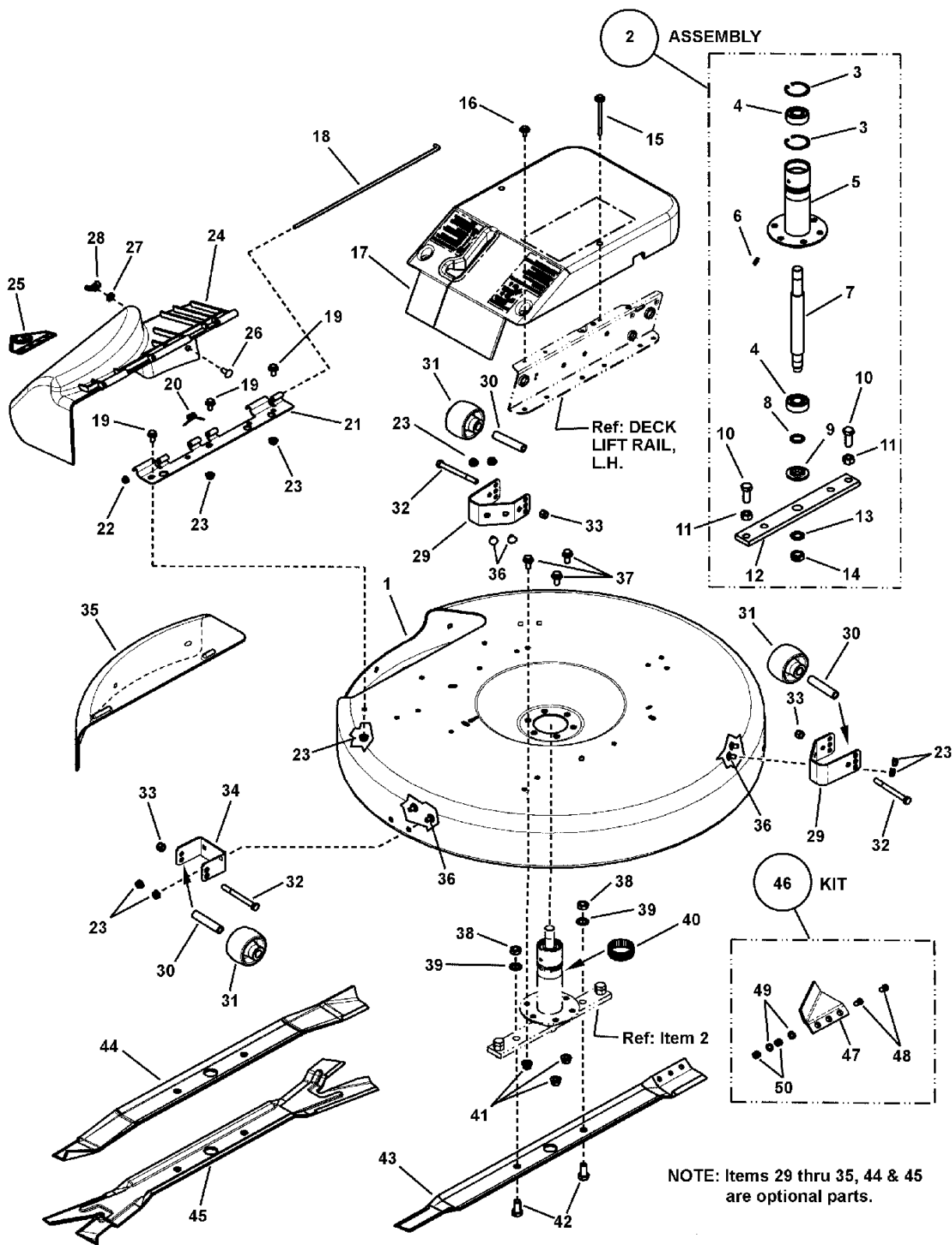
Item	Part No	Qty	Description
--	7052683	1	ASSEMBLY, Primary Chain Case (Includes the following 16 items)
1	7090307	10	SCREW, 10-24 x 1/2" Hex Washer Self-Tap
2	7022785	1	ROLLER, 1-3/8 Long
3	7010776	1	RING, 1/2" External Retaining (Heavy Duty)
4	7041136	1	WELDMENT, Primary Chain Case Half, Right Hand
5	7010756	2	BEARING, .625 x 1.37 x .435
6	7019260	2	O-RING, 1/2 x 5/8"
7	7027981	1	WASHER, Shim .625 x .875
8	7010614	1	KEY, #5 Woodruff
9	7018963	1	WELDMENT, Sprocket & Shaft
10	7011086	2	THRUST WASHER, Nylon
11	7010942	2	BEARING, Needle 1.355" ID x 1.6245" OD x .5" Wide
12	7040355	1	WELDMENT, Hub & Sprocket
13	7010941	1	CHAIN, 46 Pitch (#35 Endless)
14	7028761	1	GASKET, Primary Chain Case
15	7039778	1	PRIMARY CHAIN CASE HALF, Left Hand
16	7011121	2	WASHER, 5/8" Belleville
17	7011024	1	PLUG, 3/4" Cup Insert
18	7091504	1	SCREW, 1/4-28 x 1" Hex Head Cap, (Washer Face) GR 5
19	7091294	2	WASHER, .28 x .63 x .06 Flat, GR 5
20	7072593	1	SPACER, Brake Arm Pivot (.418/.403 long) (replaces 7010916 (.300/.285 long))
21	7052497	1	ASSEMBLY, Brake Lever (Includes brake pad & rivet)
22	7012313	1	RING, 3/8" External Retaining
23	7072406	1	* SPRING, Torsional Brake Return
24	7090303	1	NUT, 1/4-28 Hex Top Lock
25	7053114	1	ASSEMBLY, Smooth Clutch (non-asbestos) (Includes the following 5 items)
26	7059443	1	HUB, Driven Disc (assembly) (replaces 7054243 (voided))
27	7053103	1	DISC, Driven (rubber tire bonded to rim)
28	7014523	1	THRUST WASHER
29	7032331	1	PLATE, Drive Disc
30	7092081	4	NUT, 5/16-24 Hex Flange Lock
31	7091505	1	NUT, 5/8-18 Hex Nyloc
32	7061017	1 qt	** GREASE, Transmission (Use 2 oz. Maximum)

Footnotes:

* NOTE: Brake return replacement kit (7061197) is made of items 20 & 23.

** NOTE: Use 2 oz. maximum (Overfilling may cause leakage at 7010756 bearing)

Mower Deck, Blade & Spindle Group

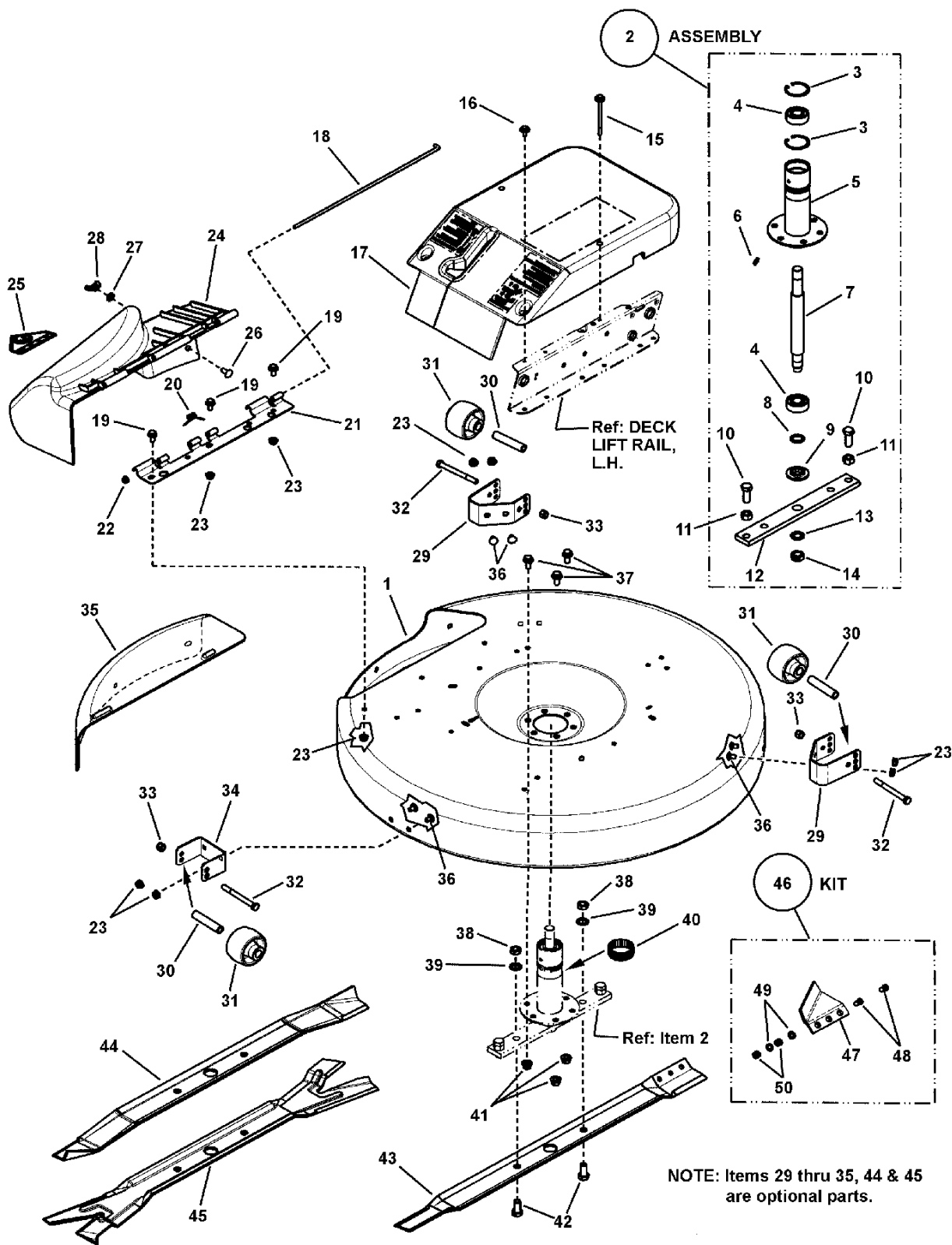


Mower Deck, Blade & Spindle Group

Item	Part No	Qty	Description
1	7061969	1	DECK, 25" Replacement (painted deck w/decals)
1	7061970	1	DECK, 28" Replacement (painted deck w/decals)
2	7054531BM	1	ASSEMBLY, Spindle Housing (Incl. items 3 thru 14)
3	7012491	2	RING, 1.85" Internal Retaining
4	7013313	2	BEARING, Spindle
5	7050696	1	ASSEMBLY, Housing (Incl. grease fitting, 7010817)
6	7010817	1	LUBE FITTING, 3/16" Press-In
7	7044785	1	SPINDLE, Rider (10.327" overall length)
8	7010935	1	WASHER, .77 x 1.13 x .06 Flat
9	7014407	1	WASHER, Spindle
10	7090491	2	SCREW, 1/2-20 x 1-1/4" Hex Head Cap, GR 5
11	7091939	2	NUT, 1/2-20 Hex, GR 5 or B
11	7031184	1	HOLDER, Blade (for 25" deck)
12	7037751	1	HOLDER, Blade (for 28" Deck)
13	7044782	1	SPACER, Blade Centering
14	7090356	1	NUT, 5/8-18 Hex Center Lock Jam
15	7091015	2	SCREW, 1/4-20 x 3-1/2" Hex Head w/Free Spinning Washer
16	7091016	4	SCREW, 1/4-20 x 5/8" Hex Head w/Free Spinning Washer
17	7073434	1	COVER, Spindle
18	7026234	1	PIN, Hinge
19	7090606	3	BOLT, 5/16-18 x 5/8" Hex Flange Lock, GR 5 (or 7091811)
20	7016341	1	SPRING, Hinge
21	7300886	1	HINGE, Deflector (Deck side)
22	7026483	2	PUSH NUT, 1/4"
23	7091601	9	NUT, 5/16-18 Hex Flange Lock, GR 5
24	7500276	1	ASSEMBLY, Discharge Deflector, 25" & 28" (w/o decal) (incl. items 18, 20, 21, 22 & p/n 7026233)
24	7026233	1	DEFLECTOR, Discharge, 28"
25	7022841	1	DECAL, Danger, (Cut Finger) International Symbol
26	7091508	2	BOLT, 5/16-18 x 3/4" Short Neck Carriage, GR 5 (Was 7090001)
27	7090188	2	WASHER, 5/16" Flat (Was 7091296)
28	7091537	2	NUT, 5/16-18 Wing
29	7033571	2	BRACKET, Gage Wheel (Rear) (optional)
30	7015272	3	SPACER (optional)
31	7019190	3	WHEEL, Gage (optional)
32	7091532	3	SCREW, 3/8-24 x 3-3/4" Hex Head Cap, GR 5 (optional)
33	7091518	3	NUT, 3/8-24 Hex Nyloc (optional)
34	7033570	1	BRACKET, Gage Wheel (Front) (optional)
35	7016983	1	COVER, 28" Mulcher (optional)
36	7090731	6	BOLT, 5/16-18 x 1/2" Short Neck Carriage, GR 5
37	7091588	3	BOLT, 3/8-16 x 3/4" Hex Flange Lock
38	7090559	2	NUT, 1/2-20 Hex Jam
39	7090509	2	WASHER, 1/2" Internal Tooth Lock
40	7012670	1	RING, Tolerance
41	7091619	9	NUT, 3/8-16 Hex Flange Lock (or 7090585)

Footnotes:

Mower Deck, Blade & Spindle Group



Item	Part No	Qty	Description
42	7090392	2	SCREW, 1/2-20 x 1" Hex Head Cap, GR 5
43	7019518	1	BLADE, 25"
43	7019515	1	BLADE, 28"
44	7016967	1	BLADE, 25" Mulcher
44	7016980	1	BLADE, 28" Mulcher
45	7021943	1	BLADE, Ninja, 25"
45	7104083BZ	1	BLADE, Ninja, 28" (Was 7026453)
46	7060480	1	KIT, Air Lift, Hi-Vac (Includes items 47, 48, 49 & 50)
47	7037723	2	AIR LIFT, Hi-Vac (3 hole)
48	7090228	6	SCREW, 5/16-24 x 11/16" Oval Head Machine
49	7090391	6	WASHER, 5/16" Internal Tooth Lock
50	7090223	6	NUT, 5/16-24 Hex

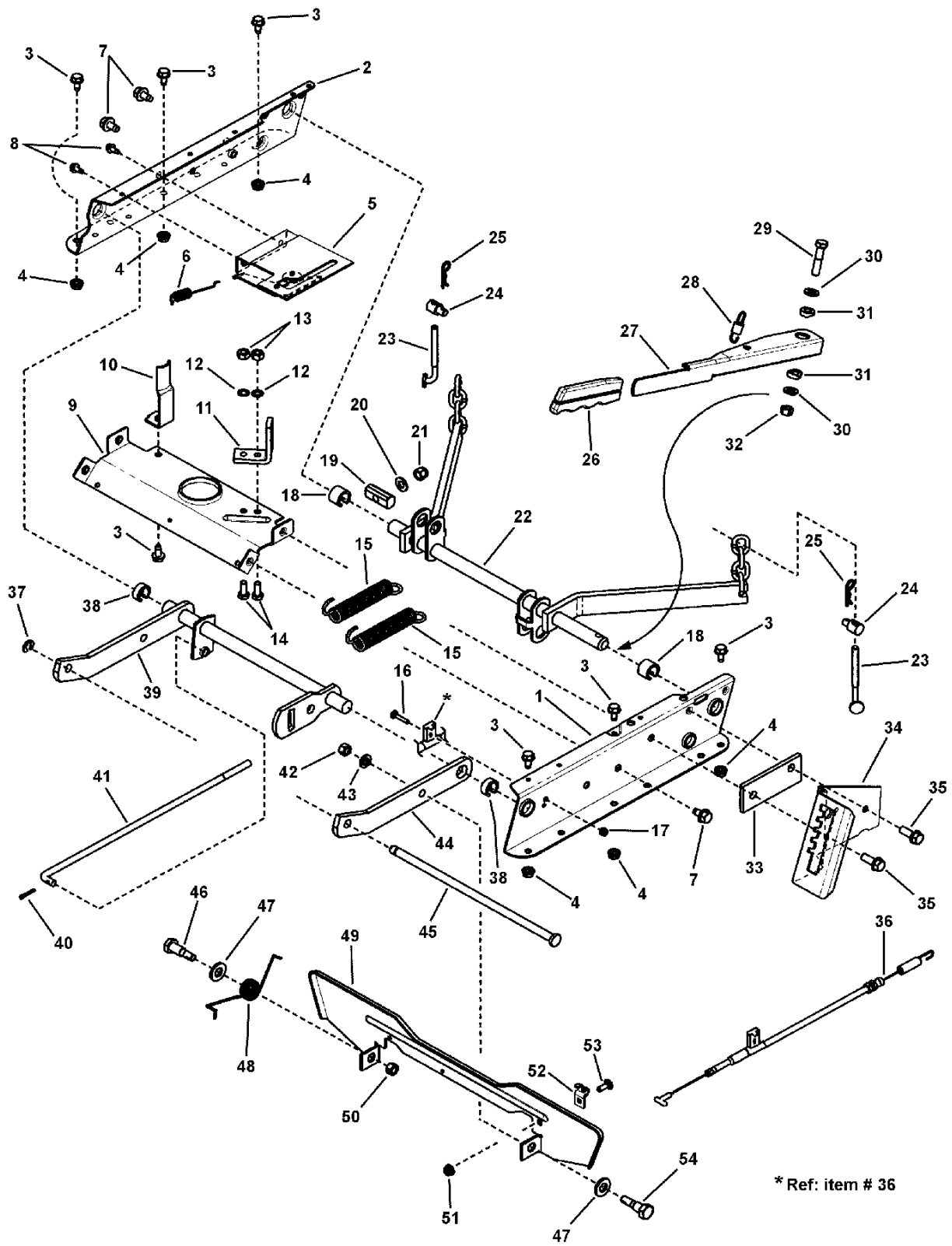
Not for
Reproduction

Footnotes:

Item	Part No	Qty	Description
1	7073269	1	RAIL, Deck Lift, Left Hand
2	7036430	1	RAIL, Deck Lift, Right Hand (Was 7043848)
3	7090361	7	SCREW, 5/16-18 x 5/8" Hex Washer Self-Tap
4	7090585	6	NUT, 5/16-18 Hex Flange Lock, GR 5
5	7058969	1	ASSEMBLY, Clutch Plate
6	7074649	1	SPRING, Latching (replaces 7035669)
7	7091198	3	SCREW, 3/8-16 x 5/8" Hex Washer Self-Tap
8	7091867	2	SCREW, 5/16-18 x 1/2" Hex Washer Self-Tap (or 7090858)
9	7031838	1	BRACE, Top
10	7031855	1	GUIDE, Belt
11	7032243	1	ANCHOR
12	7090391	2	WASHER, 5/16" Internal Tooth Lock
13	7091297	2	NUT, 5/16-24 Hex (replaces 7090223 (voided))
14	7090233	2	SCREW, 5/16-24 x 3/4" Hex Head Cap, GR 5
15	7046163	2	SPRING, Assist
16	7092051	1	BOLT, #10-24 x 1" Flat Head Square Neck
17	7091290	1	NUT, #10-24 Hex Nyloc
18	7012068	2	RING, Rear Lift Arm (Blue)
19	7034213	1	PIVOT, Leveling
20	7090122	1	WASHER, 3/8" Flat SAE
21	7090854	1	NUT, 3/8-24 Hex Nyloc
22	7058042	1	WELDMENT, Rear Lift Arm (used on 25" decks)
22	7059324	1	WELDMENT, Rear Lift Arm (used on 28" decks)
23	7028728	2	ADJUSTER, Chain (5/16-18 thread)
24	7028200	2	SWIVEL, Adjustable
25	7091503	2	HAIR PIN, 3/32 x 1-1/2"
26	7026420	1	GRIP, Height Adjustment Lever
27	7046155	1	LEVER, Height of Cut
28	7046159	1	SPRING, Lever
29	7090483	1	SCREW, 3/8-24 x 1-3/4" Hex Head Cap, GR 5
30	7032030	2	WASHER, 13/32 x 1-1/4" Flat
31	7071920	2	SPACER, Deck Lift
32	7090289	1	NUT, 3/8-24 Hex Center Lock
33	7046217	1	SPACER, Detent
34	7046157	1	DETENT, Height Adjust
35	7090324	2	SCREW, 3/8-16 x 1" Hex Washer Self-Tap
36	7073216	1	CABLE ASSEMBLY, No Reverse in Mow
37	7017847	1	RING, .438 External Retaining
38	7012067	2	RING, Front Lift Arm (Red)
39	7058041	1	WELDMENT, Front Lift Arm
40	7091598	1	PIN, 1/8 x 3/4" Cotter (Was 7090365)
41	7016122	1	ROD, Leveling (3/4-24 thread)
42	7091630	1	NUT, 3/8-24 Hex, GR B (Was 7090155)
43	7032030	1	WASHER, Flat 13/32" ID x 1.25" x 1/8" Thick ZP (Was 7012063)

Footnotes:

Deck Rails & Lift Group

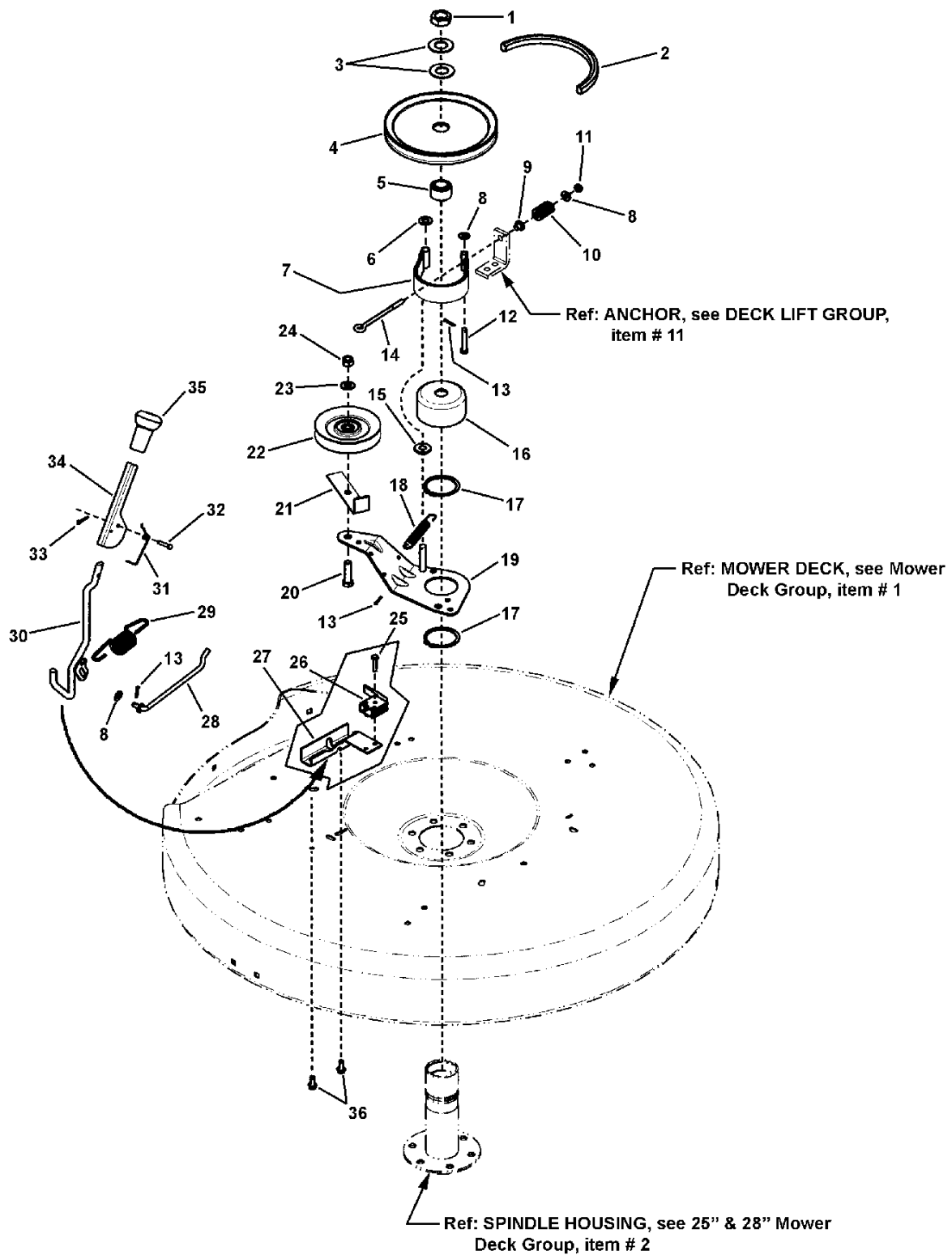


Item	Part No	Qty	Description
44	7032997	1	ARM, Front Lift
45	7022717	1	ROD, Deck Support (Front Lift Arm to Front End)
46	7015446	1	SHOULDER BOLT, 3/8-24 x 9/16"
47	7091587	2	WASHER, 1/2" Flat SAE (Was 7090250)
48	7015448	1	SPRING, Pedal
49	7073267	1	FOOT PEDAL, Blade Stop Control
50	7090289	1	NUT, 3/8-24 Hex Center Lock
51	7091584	1	NUT, 1/4-20 Hex Flange Lock, GR 5 (Was 7090583)
52	7073217	1	CLIP, Cable
53	7091530	1	BOLT, 1/4-20 x 3/4" Square Neck Carriage, GR 5 (Was 7091776)
54	7015495	1	SHOULDER BOLT, 3/8-24 w/Nylon Patch, GR 5

Not for
Reproduction

Footnotes:

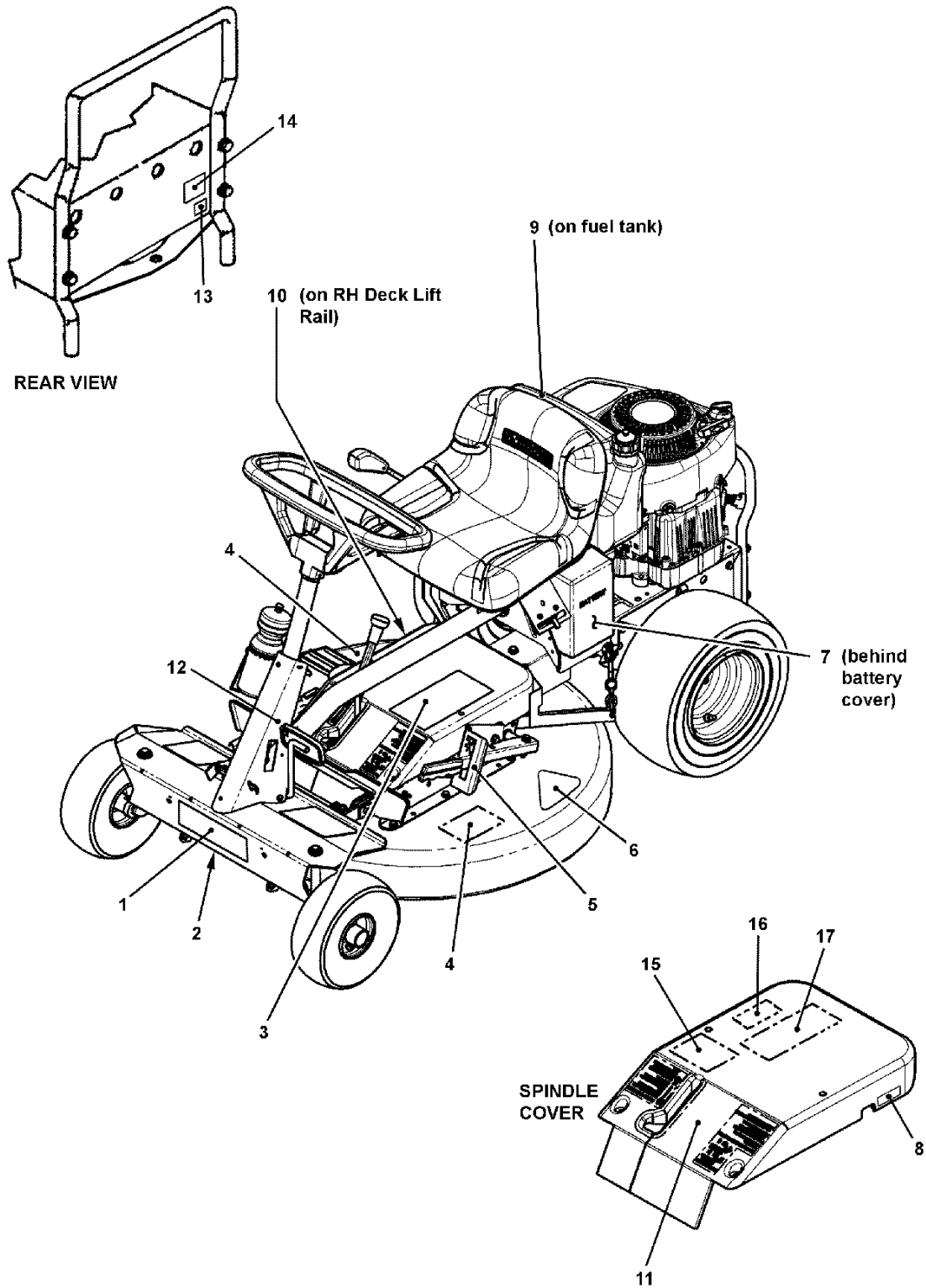
Mower Belt, Brake & Interlock Group



Item	Part No	Qty	Description
1	7074467	1	NUT, 3/4-16 Hex Jam, GR 8
2	7022252	1	* BELT, Drive (72.75" AA Section) (used on 25" & 28" Decks)
3	7032027	2	WASHER, 49/64" I.D. x 1-1/2" O.D. Flat
4	7018781	1	PULLEY, Deck
5	7015290	1	PULLEY, Hub (Powdered Metal)
6	7090122	1	WASHER, 3/8" Flat SAE
7	7034852	1	BAND, Brake (Formed)
8	7091294	4	WASHER, .28 x .63 x .06 Flat, GR 5 (Was 7090055)
9	7014343	1	BUSHING, Flange .27 x .35 x .4
10	7046782	1	SPRING, Rectangular Wire Die, Blue
11	7091705	1	NUT, 1/4-20 Hex Top Lock (Was 7090761)
12	7014304	1	PIN, 1/4 x 1-5/8" Clevis
13	7091597	3	PIN, 3/32 x 3/4" Cotter (Was 7090037)
14	7046677	1	EYE-BOLT, 1/4-20 x 4"
15	7014314	1	SPACER, .39 x 1.0 x .31 Nylon
16	7035378	1	DRUM, Brake Spindle (3" OD, 1.6" Tall)
17	7010740	2	RING, 2" External Retaining
18	7036521	1	SPRING, Extension, 4" x 1/2" Diameter
19	7047787	1	WELDMENT, Idler Arm
20	7091497	1	SCREW, 3/8-16 x 1-1/2" Hex Head Cap, GR 5
21	7032111	1	RESTRICTOR, Belt
22	7029624	1	PULLEY, Idler (3/8" ID, 4" OD)
23	7091514	1	WASHER, 3/8" Flat
24	7091299	2	NUT, 3/8-16 Hex Nyloc
25	7090299	1	SCREW, #10-32 x 1" Hex Washer Head Self-Tap
26	7018524	1	SWITCH, Deck Interlock (NO)
27	7038021	1	MOUNT, Handle/Switch
28	7012055	1	ROD, Idler Control
29	7014168	1	SPRING, Blade Handle
30	7059254	1	WELDMENT, Blade Engagement Handle
31	7046648	1	SPRING, Torsion, Flip Handle
32	7091974	1	PIN, 3/16 x 1" Clevis
33	7090555	1	PIN, 3/32 x 1/2" Cotter
34	7046567	1	HANDLE, Blade Engagement (Flip)
35	7046874	1	GRIP, Handle
36	7091819	2	SCREW, 1/4-20 x 5/8" Hex Washer Head Self-Tap (Was 7090362)

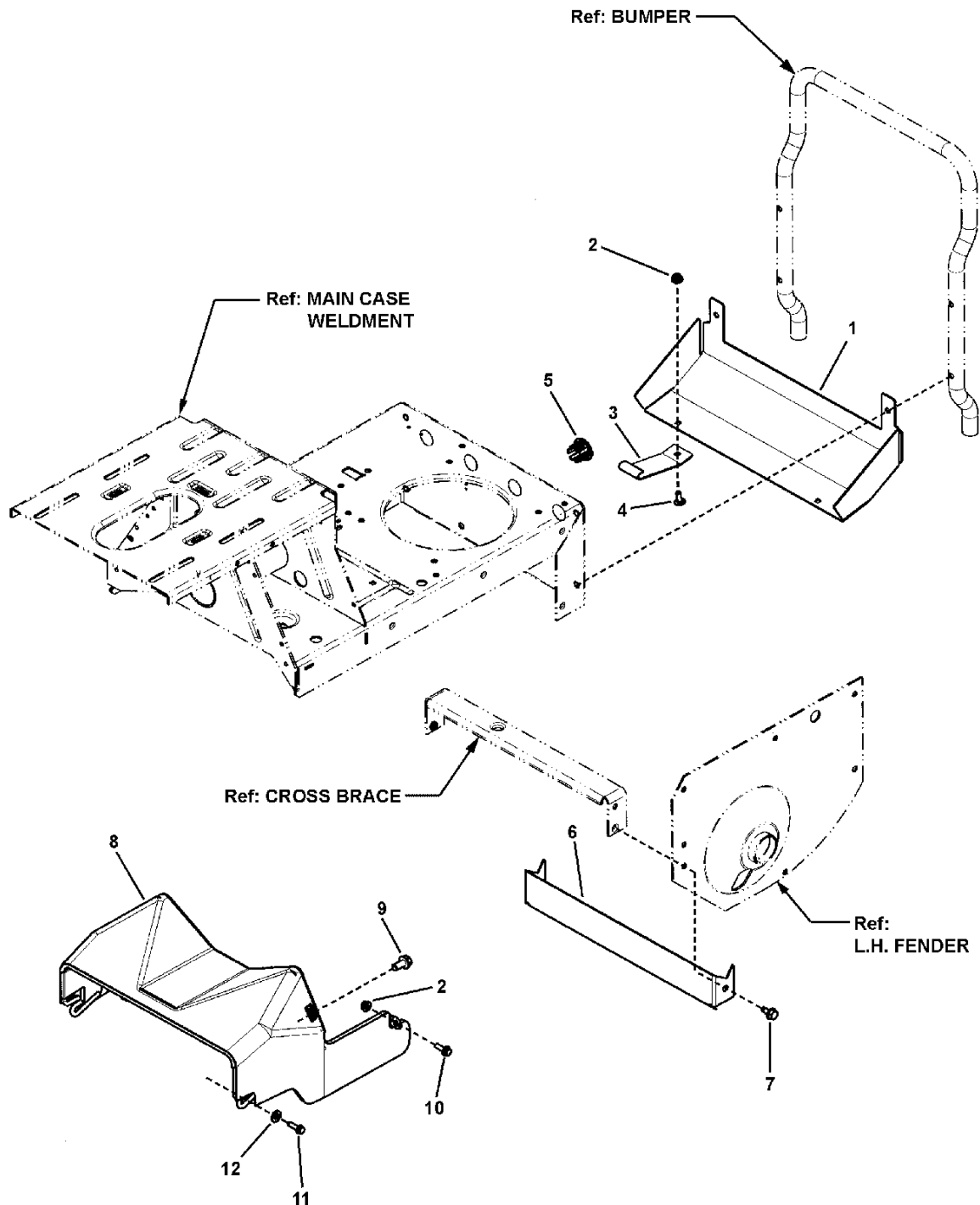
Footnotes:

NOTE: * Belt part numbers are printed on belts.



Item	Part No	Qty	Description
1	7071916	1	DECAL, SNAPPER
2	7029948	1	DECAL, Battery Storage
3	7073206	1	DECAL, Safety Instructions (Spanish/Italian)
3	7035974	1	DECAL, Safety Instructions (English/Dutch)
3	7035973	1	DECAL, Safety Instructions (French/German)
3	7101166	1	DECAL, 8-Panel Symbols, Euro RER (replaces items 7029113, 7029114, 7073199, 7073200, 7029345 & 7029346)
4	7100739	1	DECAL, Deck Symbols- International (replaces 7022841)
5	7046218	1	DECAL, Height of Cut
6	7023992	1	DECAL, 25 Inch (Hi-Vac)
6	7023996	1	DECAL, 28 Inch (Hi-Vac)
7	7029947	1	DECAL, Battery Caution, Multi-Language
7	7101164	1	DECAL, Battery Orientation, Euro RER (replaces item 7029947)
8	7101163	1	DECAL, Remove Battery, Symbols, Euro
9	7029113	1	DECAL, Caution, Fuel Leakage (English)
9	7029114	1	DECAL, Caution, Fuel Leakage (Dutch)
9	7073199	1	DECAL, Caution, Fuel Leakage (Italian)
9	7073200	1	DECAL, Caution, Fuel Leakage (Spanish)
9	7029345	1	DECAL, Caution, Fuel Leakage (French)
9	7029346	1	DECAL, Caution, Fuel Leakage (German)
9	7101165	1	DECAL, Caution, Fuel Leakage (replaces item 7029113)
10	7024052	1	DECAL, Deflector, French/German
10	7029839	1	DECAL, Deflector Caution (English/Dutch)
10	7101167	1	DECAL, Blade Caution, Euro RER
11	7073201	1	DECAL, Brake Operation (Italian)
11	7073202	1	DECAL, Brake Operation (Spanish)
11	7022215	1	DECAL, Brake Operation (German)
11	7022216	1	DECAL, Brake Operation (French)
11	7022218	1	DECAL, Brake Operation (Dutch)
12	7028514	1	DECAL, Clutch Brake
13	7029776	1	DECAL, Euro Community (CE)
14	7100579	1	DECAL, European Noise Control (98 dB)
14	7074135	1	DECAL, European Noise Control (100 dB)
15	7074480	1	DECAL, No Mow in Reverse (Euro)
16	7029784	1	DECAL, Deck/Chute International Warning
17	7075608	1	DECAL, Service Parts, Euro
--	7074548	1	DECAL, 2002 Year of Manufacture (not shown)
--	7075378	1	DECAL, 2003 Year of Manufacture (not shown)
--	7029490	1	DECAL, 2004 Year of Manufacture (not shown)
--	7011279	1	DECAL, 2005 Year of Manufacture (not shown)
--	7100611	1	DECAL, 2006 Year of Manufacture (not shown)
--	7101285	1	DECAL, 2007 Year of Manufacture (not shown)
--	7022841	1	DECAL, Danger, (Cut Finger) International Symbol (used on some Discharge Deflectors)

Footnotes:

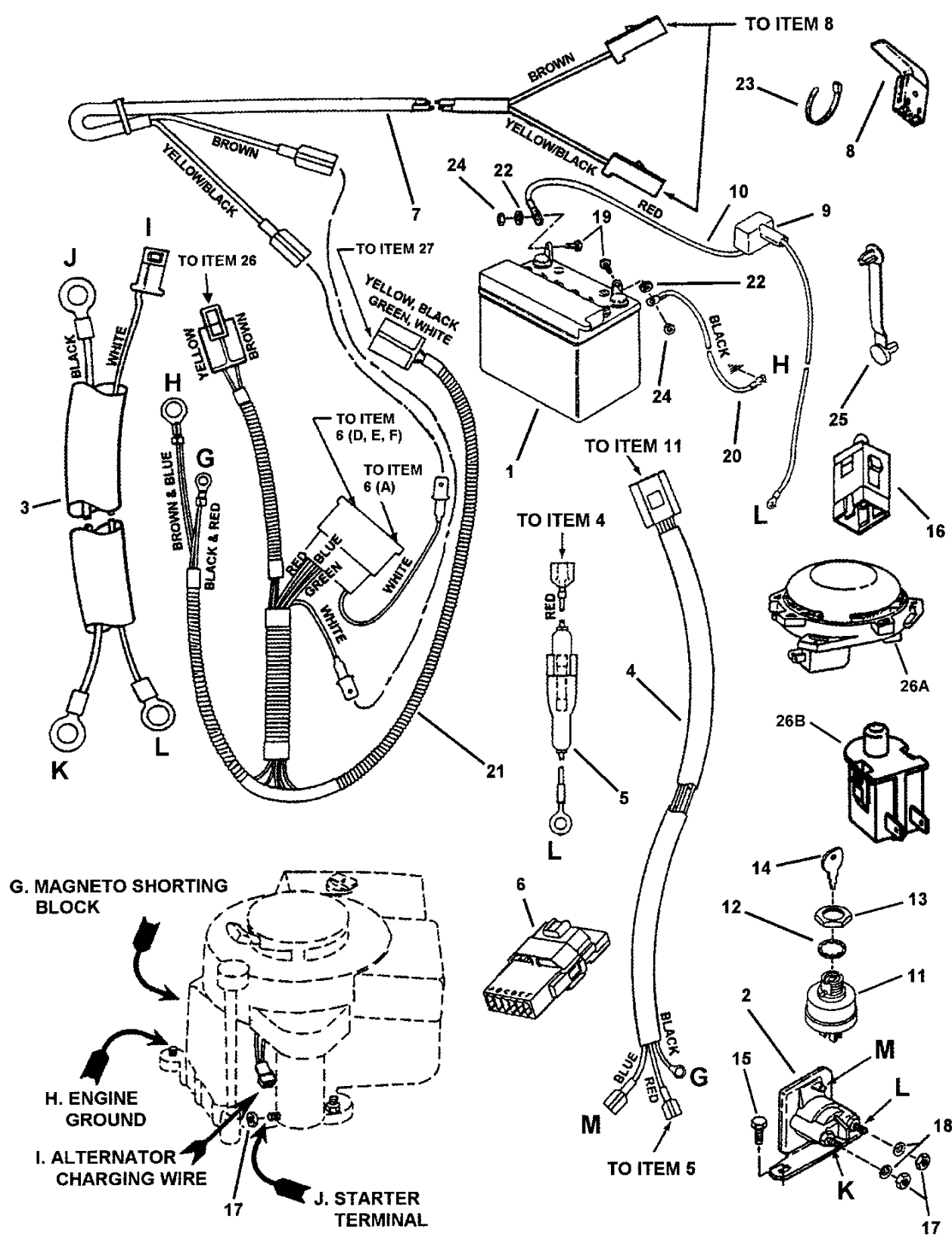


Item	Part No	Qty	Description
1	7300547	1	REAR GUARD, Euro Maincase
2	7091584	3	NUT, 1/4-20 Hex Flange Lock
3	7300548	2	STRAP, Rear Guard
4	7091530	2	BOLT, 1/4-20 x 3/4" Short Neck Carriage, GR 5
5	7024998	3	PLUG, 1" Hole
6	7300546	1	GUARD, Main Case, Front, Euro RER
7	7090361	2	SCREW, 5/16-18 x 5/8" Hex Washer Self-Tap
8	7102769	1	GUARD ASSEMBLY, Wire Form (Euro)
9	7090815	2	SCREW, 3/8-16 x 3/4" Hex Washer Self-Tap, BZ
10	7091906	1	SCREW, 1/4-20 x 3/4" Hex Head Flange, GR 5, YZ
11	720042	2	SCREW, 1/4-20 x 1" Hex Washer Self-Tap
12	7090188	2	WASHER, 11/32" Flat

Not for
Reproduction

Footnotes:

Electrical Group (for 10, 11, 12.5 & 13HP Briggs)

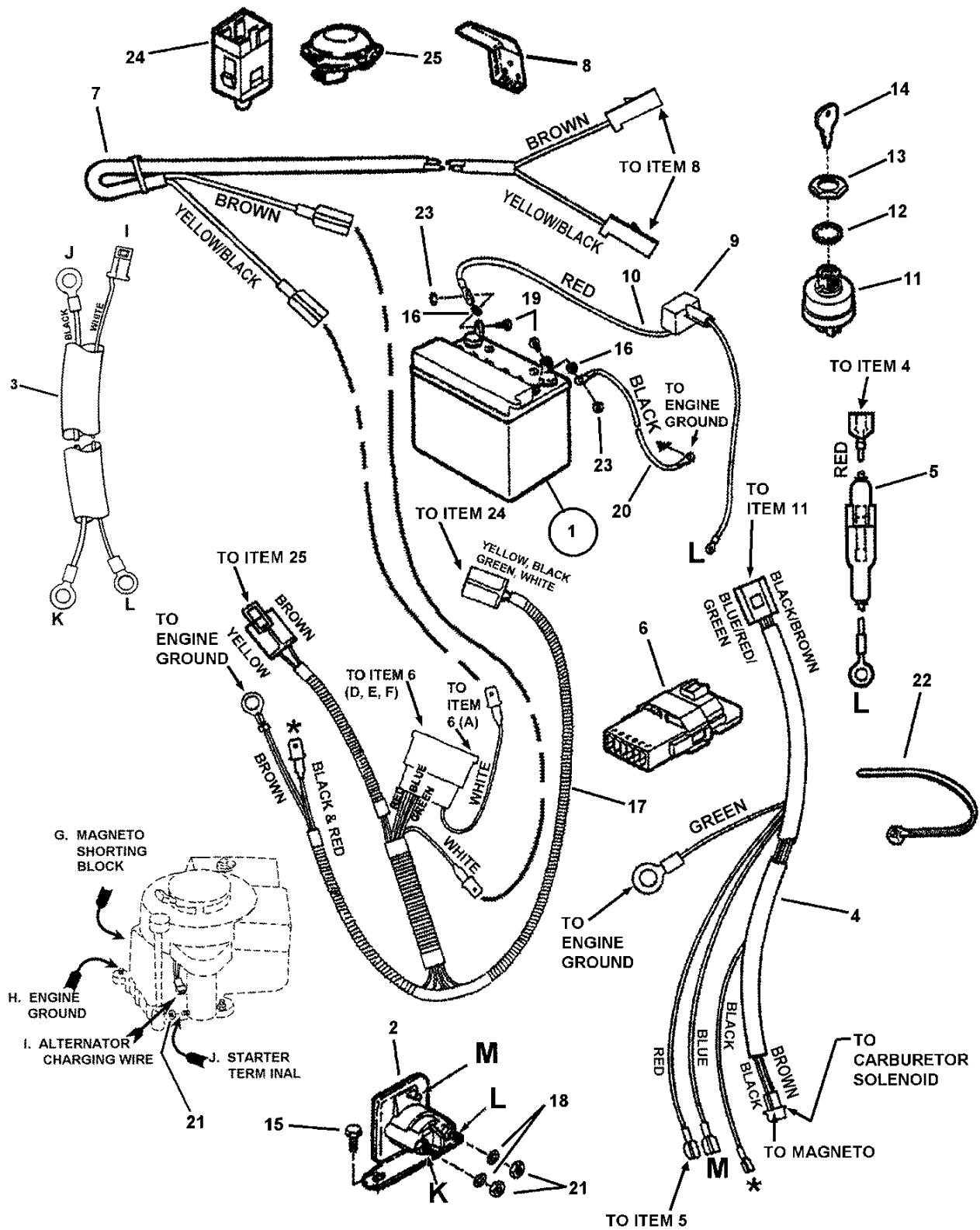


Electrical Group (for 10, 11, 12.5 & 13HP Briggs)

Item	Part No	Qty	Description
1	7060753	1	KIT, Battery, 12 Volt, 220CCA, Dry Charge (includes decal (7012358)0
2	7075671	1	SOLENOID, Super-Trombetta (replaces 7018817)
3	7022788	1	HARNESS, Starter Wiring (Briggs Engines)
4	7073715	1	HARNESS, Ignition Wiring (Briggs Engines)
5	7016168	1	HOLDER, Fuse (Includes Fuse)
--	7016169	1	FUSE, 10 Amp (Not shown)
6	7028606	1	INTERLOCK MODULE, Briggs
7	7028386	1	HARNESS (Deck Interlock Wiring)
8	7018524	1	SWITCH, Deck Interlock (NO)
9	7012444	1	COVER, Battery Cable
10	7019326	1	WIRE, Positive (Red, 17" long)
11	7073797	1	SWITCH, Ignition, 4 Terminal, Indak
12	7090880	1	WASHER, 5/8" Internal Tooth Lock
13	7015438	1	NUT, 5/8-32 Hex
14	7011138	1	IGNITION KEY, Pair
14	1737837	1	KEYS, Blister Pk (KIDS+MWRS DON'T MIX) English/French (set of two, one coated)
15	7090539	3	SCREW, 1/4-20 x 1/2" Hex Washer Self-Tap
16	7022886	1	SWITCH, Operator Presence Control (OPC) Traction (NC/NO)
17	7091576	5	NUT, 1/4-20 Hex, GR 5 or B
18	7090053	2	WASHER, 1/4" Internal Tooth Lock
19	7027172	2	SCREW, 1/4-20 x 5/8" Hex Head Cap GR 5
20	7028027	1	WIRE, Negative, Black (15" long)
21	7028607	1	HARNESS, Operator Presence Control (OPC) Wire
22	7012485	2	RETAINER, 1/4" Bolt
23	7012080	2	CABLE TIE, 7"
24	7090372	2	NUT, 1/4-20 Hex Center Lock, GR 5 or B
25	7014451	1	CABLE TIE, 3.19" long
26A	7029211	1	SWITCH, Seat (NC) (used on 11 & 13HP Engines)
26B	7023354	1	SWITCH, Seat (NC)

Footnotes:

Electrical Group (for 13.5 & 14.5 HP Briggs)

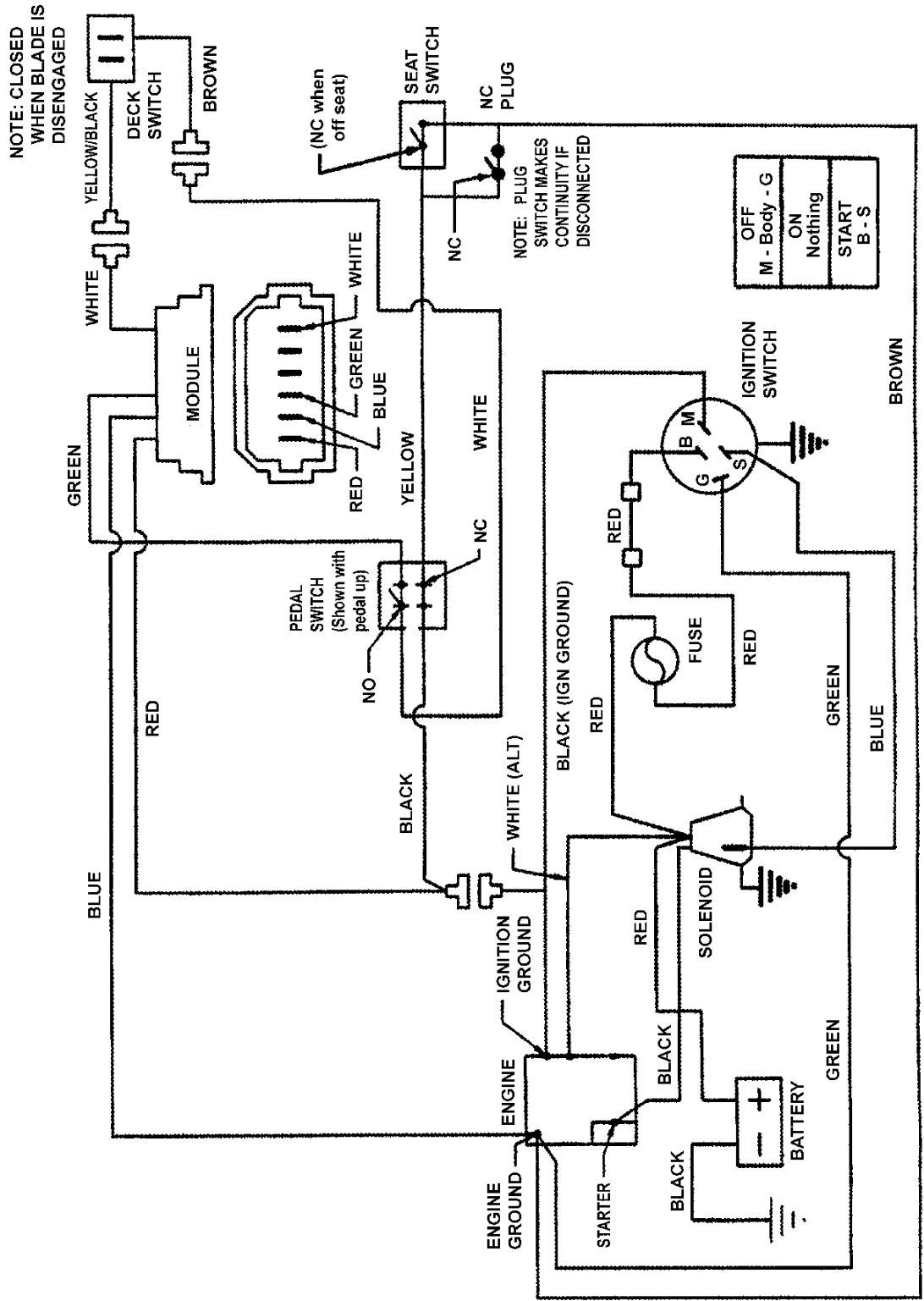


Electrical Group (for 13.5 & 14.5 HP Briggs)

Item	Part No	Qty	Description
1	7060753	1	KIT, Battery, 12 Volt, 220CCA, Dry Charge (includes decal (7012358)
2	7075671	1	SOLENOID, Super-Trombetta (replaces 7018817)
3	7022788	1	HARNESS, Starter Wiring (Briggs, AC)
4	7074406	1	HARNESS, Ignition Wiring
5	7016168	1	HOLDER, Fuse (Includes Fuse)
--	7016169	1	FUSE, 10 Amp (Not shown)
6	7028606	1	INTERLOCK MODULE, Briggs
7	7028386	1	HARNESS (Deck Interlock Wiring)
8	7018524	1	SWITCH, Deck Interlock (NO)
9	7012444	1	COVER, Battery Cable
10	7019326	1	WIRE, Positive (Red, 17" long)
11	7026343	1	SWITCH, Ignition-Afterfire Solenoid
12	7090880	1	WASHER, 5/8" Internal Tooth Lock
13	7015438	1	NUT, 5/8-32 Hex
14	7011138	1	IGNITION KEY, Pair
14	1737837	1	KEYS, Blister Pk (KIDS+MWRS DON'T MIX) English/French (set of two, one coated)
15	7091122	3	SCREW, 1/4-20 x 1/2" Hex Washer Self-Tap (Was 7090539)
16	7012485	2	RETAINER, 1/4" Bolt
17	7028675	1	HARNESS WIRE, Operator Presence Control (OPC)
18	7090053	2	WASHER, 1/4" Internal Tooth Lock
19	7090072	2	SCREW, 1/4-20 x 5/8" Hex Head Cap GR 5 (Was 7027172)
20	7028027	1	WIRE, Negative, Black (15" long)
21	7091576	2	NUT, 1/4-20 Hex, GR 5 or B (attaches to starter terminal)
22	7012080	2	CABLE TIE, 7"
23	7090372	2	NUT, 1/4-20 Hex Center Lock, GR 5 or B
24	7022886	1	SWITCH, Operator Presence Control (OPC) Traction (NC/NO)
25	7023354	1	SWITCH, Seat (Normally Closed)

Footnotes:

Wiring Schematic (for 10, 11, 12.5 & 13HP Briggs)



Wiring Schematic (for 10, 11, 12.5 & 13HP Briggs)

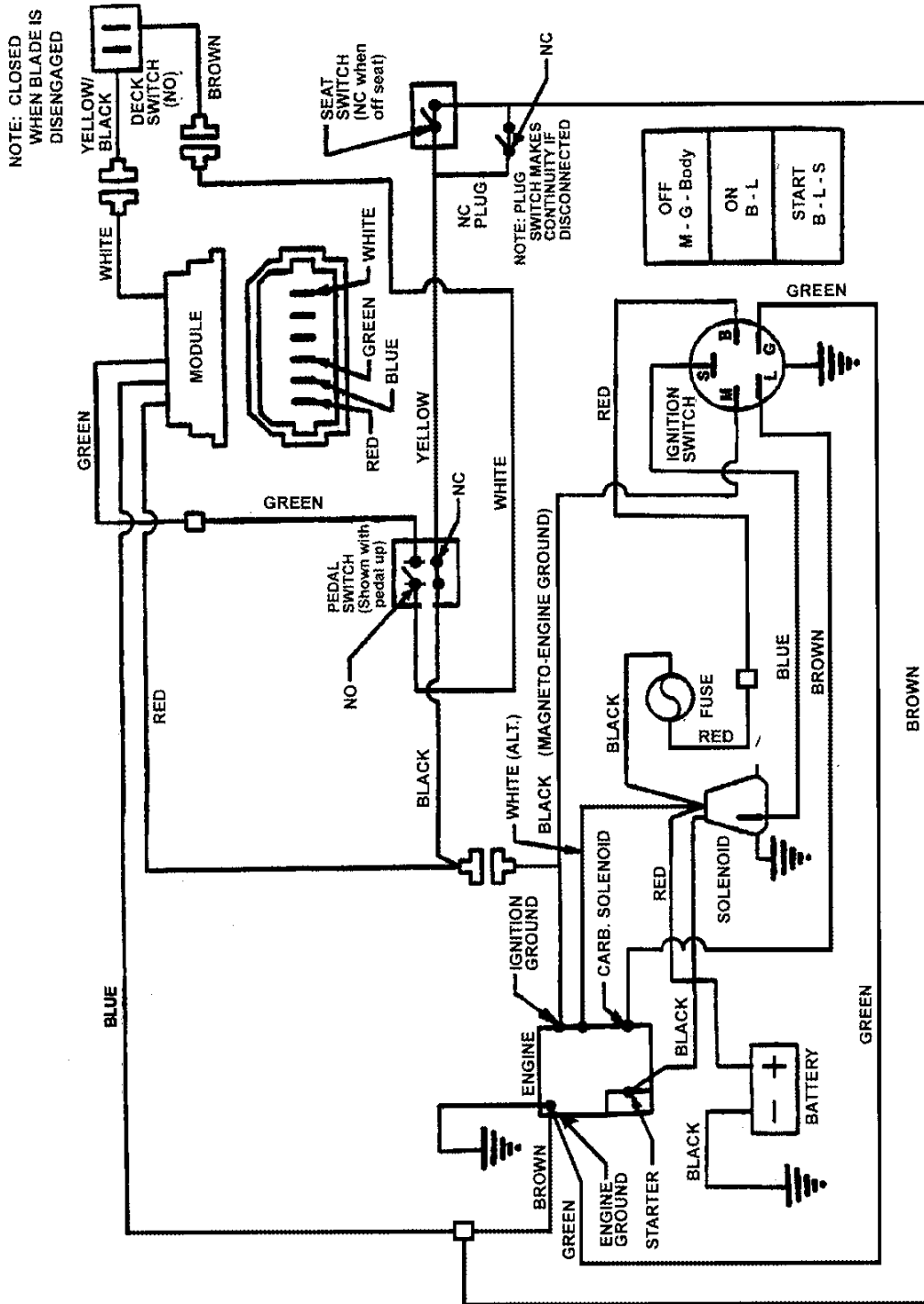
Item	Part No	Qty	Description
--	--		* Wiring Schematic incl. harness #'s 7022788, 7073715, 7028386 & 7028607

Not for
Reproduction

Footnotes:

NOTE: * For harness # image & description see: Electrical Group (For 10, 11, 12.5 & 13HP Briggs) page.

Wiring Schematic (for 13.5 & 14.5 HP Briggs)



Wiring Schematic (for 13.5 & 14.5 HP Briggs)

Item	Part No	Qty	Description
--	--		* Wiring Schematic incl. harness #'s 7022788, 7074406, 7028386 & 7028675

Not for
Reproduction

Footnotes:

NOTE: * For harness # image & description see: Electrical Group (For 13.5 HP Briggs) page.

No
Diagram
Available

Parts List
Only

Item	Part No	Qty	Description
--	7060697	1	KIT, Dump Cart (used on All Rear Engine Riders)
--	7060941	1	KIT, Single Bag Catcher (used on All 25" Deck Rear Engine Riders)
--	7060943	1	KIT, Single Bag Catcher (used on All 28" & 33" Deck Rear Engine Riders)
--	7063281	1	KIT, Twin Bag Catcher (used on All 28" & 33" Deck Rear Engine Riders)
--	7060947	1	KIT, Bag-N-Wagon (used on All 28" & 33" Deck Rear Engine Riders)
--	7060948	1	KIT, 28" Thatcherizer (used on All series 7 & Newer Rear Engine Riders)
--	7060964	1	KIT, Wagon Cover (used on All 28" Deck Rear Engine Riders)
--	7072416	1	KIT, Front Weight (used on All series 7 & Newer Rear Engine Riders)
--	7060959	1	KIT, 36" Dozer Blade (used on All Rear Engine Riders)
--	7060653	1	KIT, Tire Chains (16 x 6.50-8 Tires) (used on All Rear Engine Riders)
--	7060049	1	KIT, Tire Chains (16 x 4.50-8 Tires) (used on All Rear Engine Riders)
--	7061049	1	KIT, Ninja Recycling Cover (used on All 25" Deck Rear Engine Riders)
--	7061253	1	KIT, Ninja Recycling Cover (used on All 28" Deck Rear Engine Riders)
--	7060325	1	KIT, Drive Disc Puller (used on All RER Aluminum Drive Discs)
--	7061872	1	HARDWARE BAG (Seat attachment & steering hdwe.) (used on model 7084886)
--	7063292	1	HARDWARE BAG (Seat attachment & steering hdwe.) (used on models 7085626, 7800500, 7800117, 7800658, 7085686, 7800118, 7800501 & 7800659)
--	7063039	1	HARDWARE BAG (Seat attachment & steering hdwe.) (used on models 7084651, 7800116, 7800139, 7800499, 7800653, 7800657 & 7084651)

Not for
Reproduction

Footnotes:

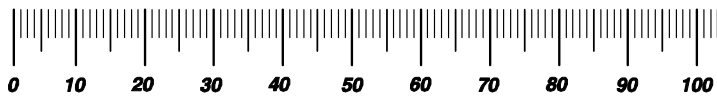
Not for
Reproduction

Hardware Identification & Torque Specifications

Torque Specification Chart								
FOR STANDARD METRIC MACHINE HARDWARE (Tolerance ± 20%)								
Property Class	5.6		8.8		10.9		12.9	
	Class 5.6		Class 8.8		Class 10.9		Class 12.9	
Size Of Hardware	in/lbs		in/lbs		in/lbs		in/lbs	
	ft/lbs	Nm.	ft/lbs	Nm.	ft/lbs	Nm.	ft/lbs	Nm.
M3	5.88	.56	13.44	1.28	19.2	1.80	22.92	2.15
M4	13.44	1.28	30.72	2.90	43.44	4.10	52.56	4.95
M5	26.4	2.50	60.96	5.75	5.97	8.10	7.15	9.7
M6	44.64	4.3	7.3	9.9	10.3	14	12.1	16.5
M7	5.2	7.1	12.1	16.5	16.9	23	19.9	27
M8	7.7	10.5	17.7	24	25	34	29	40
M10	15	21	35	48	50	67	59	81
M12	26	36	61	83	86.2	117	103	140
M14	42	58	101	132	136	185	162	220
M16	64	88	147	200	210	285	250	340
M18	89	121	202	275	287	390	346	470
M20	126	171	290	390	405	550	486	660
M22	169	230	390	530	559	745	656	890
M24	217	295	497	375	708	960	840	1140
M27	320	435	733	995	1032	1400	1239	1680
M30	435	590	995	1350	1401	1900	1681	2280
M33	590	800	1349	1830	1902	2580	2278	3090
M36	759	1030	1740	2360	2441	3310	2935	3980
M39	988	1340	2249	3050	3163	4290	3798	5150

Torque Specification Chart						
FOR STANDARD MACHINE HARDWARE (Tolerance ± 20%)						
Hardware Grade	No Marks		SAE Grade 5		SAE Grade 8	
	SAE Grade 2		SAE Grade 5		SAE Grade 8	
Size Of Hardware	in/lbs		in/lbs		in/lbs	
	ft/lbs	Nm.	ft/lbs	Nm.	ft/lbs	Nm.
8-32	19	2.1	30	3.4	41	4.6
8-36	20	2.3	31	3.5	43	4.9
10-24	27	3.1	43	4.9	60	6.8
10-32	31	3.5	49	5.5	68	7.7
1/4-20	66	7.6	8	10.9	12	16.3
1/4-28	76	8.6	10	13.6	14	19.0
5/16-18	11	15.0	17	23.1	25	34.0
5/16-24	12	16.3	19	25.8	29	34.0
3/8-16	20	27.2	30	40.8	45	61.2
3/8-24	23	31.3	35	47.6	50	68.0
7/16-14	30	40.8	50	68.0	70	95.2
7/16-20	35	47.6	55	74.8	80	108.8
1/2-13	50	68.0	75	102.0	110	149.6
1/2-20	55	74.8	90	122.4	120	163.2
9/16-12	65	88.4	110	149.6	150	204.0
9/16-18	75	102.0	120	163.2	170	231.2
5/8-11	90	122.4	150	204.0	220	299.2
5/8-18	100	136	180	244.8	240	326.4
3/4-10	160	217.6	260	353.6	386	525.0
3/4-16	180	244.8	300	408.0	420	571.2
7/8-9	140	190.4	400	544.0	600	816.0
7/8-14	155	210.8	440	598.4	660	897.6
1-8	220	299.2	580	788.8	900	1,244.0
1-12	240	326.4	640	870.4	1,000	1,360.0

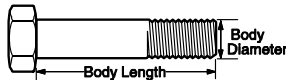
The guides and ruler furnished below are designed to help you select the appropriate hardware.



Nut, M8

Thread Diameter (mm)
Inside Diameter (in) Threads per inch

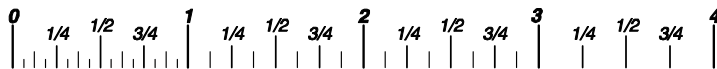
Nut, 1/2-16



Screw, M8- 1.25 x 25

Thread Diameter (mm) Distance between threads (mm) Body Length (mm)
Body Diameter Threads per inch Body Length (in)

Screw, 1/2- 16 x 2



Standard Hardware Sizing

When a washer or nut is identified as 1/2" (M8), this is the *Nominal size*, meaning the *inside diameter* is 1/2 inch (8mm metric thread diameter); if a second number is present it represents the *threads per inch* (distance between threads).

When bolt or capscrew is identified as 1/2 - 16 x 2" (M8 - 1.25 x 50), this means the *Nominal size*, or body diameter is 1/2 inch (8mm metric thread diameter), the second number, 16, represents the *threads per inch*, (1.25 thread diameter). The final number is the body length of the bolt or screw, 2 inches (50mm).

NOTES

- These torque values are to be used for all hardware excluding: locknuts, self-tapping screws, thread forming screws, sheet metal screws and socket head setscrews.
- Recommended seating torque values for locknuts:
 - for prevailing torque locknuts - use 65% of grade5 torques.
 - for flange whizlock nuts and screws - use 135% of grade 5 torques.
- Unless otherwise noted on assembly drawings, all torque values must meet this specification.

Common Hardware Types

Hex Head Capscrew



Washer



Carriage Bolt



Lockwasher



Hex Nut



Wrench & Fastener Size Guide

1/4" Bolt or Nut Wrench—7/16"	5/16" Bolt or Nut Wrench—1/2"	3/8" Bolt or Nut Wrench—9/16"	7/16" Bolt or Nut Wrench (Bolt)—5/8" Wrench (Nut)—11/16"	1/2" Bolt or Nut Wrench—3/4"
M6 Bolt or Nut Wrench—10mm	M8 Bolt or Nut Wrench—13mm	M10 Bolt or Nut Wrench—17mm	M12 Bolt or Nut Wrench—19mm	M14 Bolt or Nut Wrench—22mm

Parts Manual for

SNAPPER®

25" & 28" REAR ENGINE RIDER EUROPEAN SERIES 23

Not for
Reproduction

IT IS THE POLICY OF BRIGGS & STRATTON CORP TO IMPROVE ITS PRODUCTS WHENEVER IT IS POSSIBLE AND PRACTICAL TO DO SO. WE RESERVE THE RIGHT TO MAKE CHANGES OR ADD IMPROVEMENTS AT ANY TIME WITHOUT INCURRING ANY OBLIGATION TO MAKE SUCH CHANGES ON PRODUCTS

Briggs & Stratton Yard Power Products Group

535 Macon Road
McDonough, GA, 30253 U.S.A.
800-935-2967

www.snapper.com

Copyright © 2010 Briggs & Stratton Corporation
Milwaukee, WI USA. All Rights Reserved

**Manual No. 7006153
Revision: K 12/7/2010**