

800 / 900

Series 22" Single Stage Snowthrowers

Attachment

Mfg. No.	Description
1695875	8TP 22" Single Stage Snowthrower
1695876	8TP 22" Single Stage Remote Snowthrower
1695877	9TP 22" Single Stage Remote Snowthrower
1695879	8TP 22" Single Stage Remote Snowthrower (CE/Export)

Not for
Reproduction

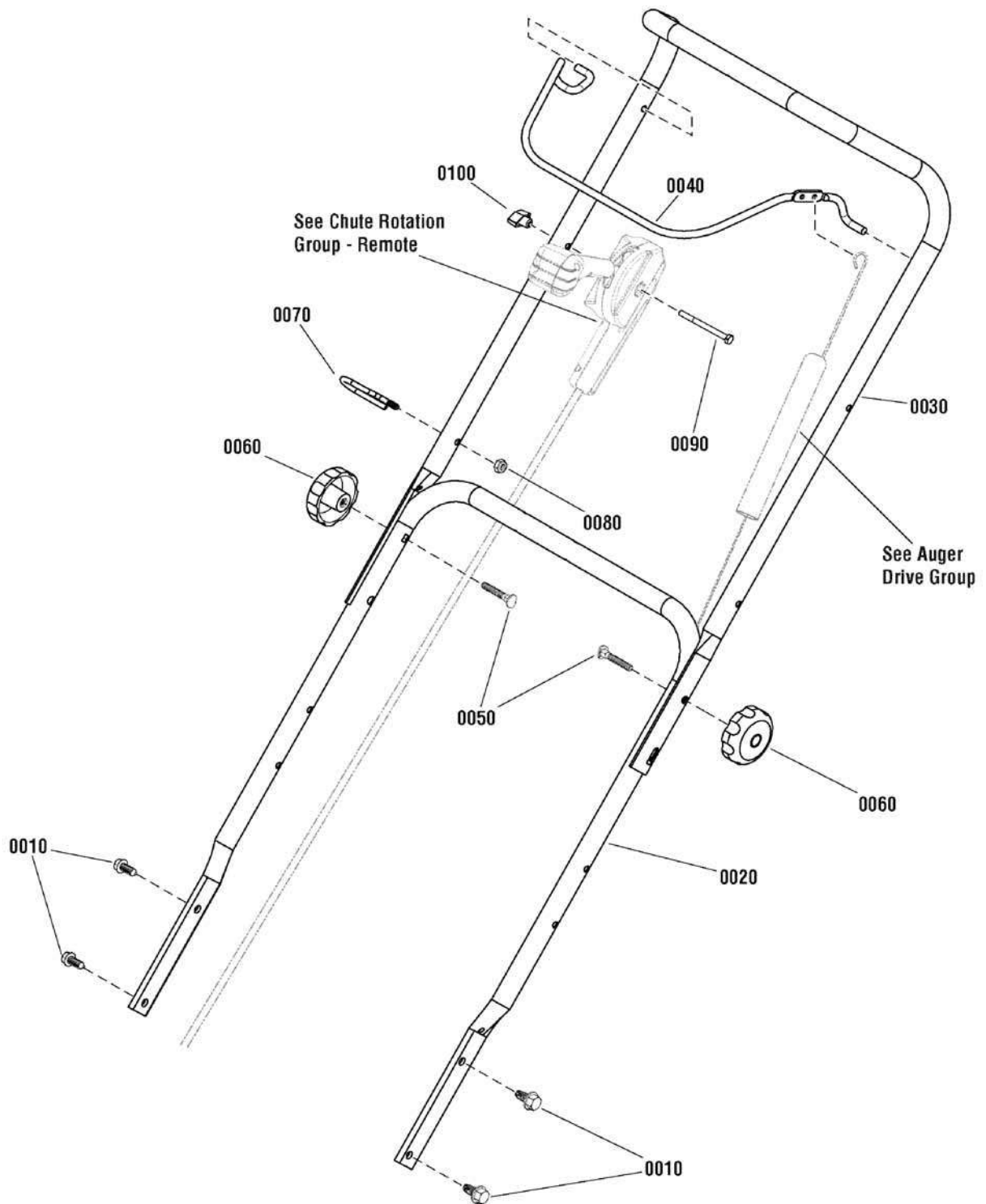
PRODUCT COMPONENTS	PAGES
Handles & Controls Group	4
Engine Group - 8TP & 9TP	6
Frame Group	8
Auger Drive Group	10
Auger Group	12
Wheel & Body Covering Group	14
Decals Group	16
Chute Group - Manual	18
Chute Group - Remote	20
Chute Rotation Group - Manual	22
Chute Rotation Group - Remote	24
Panel Group - Headlight	26
Torque Specification Chart	Inside Back Cover

Not for
Reproduction

Handles & Controls Group

NOTE: Unless noted otherwise,
use the standard hardware torque
specification chart.

988896



The above parts group applies to the following Mfg. Nos.:

- 1695875 - 8TP 22" Singl
- 1695876 - 8TP 22" Singl
- 1695877 - 9TP 22" Singl
- 1695879 - 8TP 22" Singl

Handles & Controls Group

REF NO	PART NO.	QTY.	DESCRIPTION
0010	1930601	4	SCREW, Hex Washer Head, Taptite, 5/16-18 x 5/8
0020	1739362A	1	HANDLEBAR, Lower
0030	1739363A	1	HANDLEBAR, Upper (8TP Models Only)
0030	1751172A	1	HANDLEBAR, Upper (9TP Models Only)
0040	1739361BN	1	BAIL, Engine Stop
0050	7091189	2	BOLT, Carriage, Curved Head, 5/16 x 2, G2
0060	725478	2	KNOB, Handle, 5/16-18
0070	1739389	1	GUIDE, Rope
0080	7091603	1	NUT, 1/4
0090	7091317	1	CAPSCREW, Hex Head, 1/4-20 x 3, G5 (Remote Models Only)
0100	194289	1	KNOB, Handle (Remote Models Only)

Not for
Reproduction

Footnotes

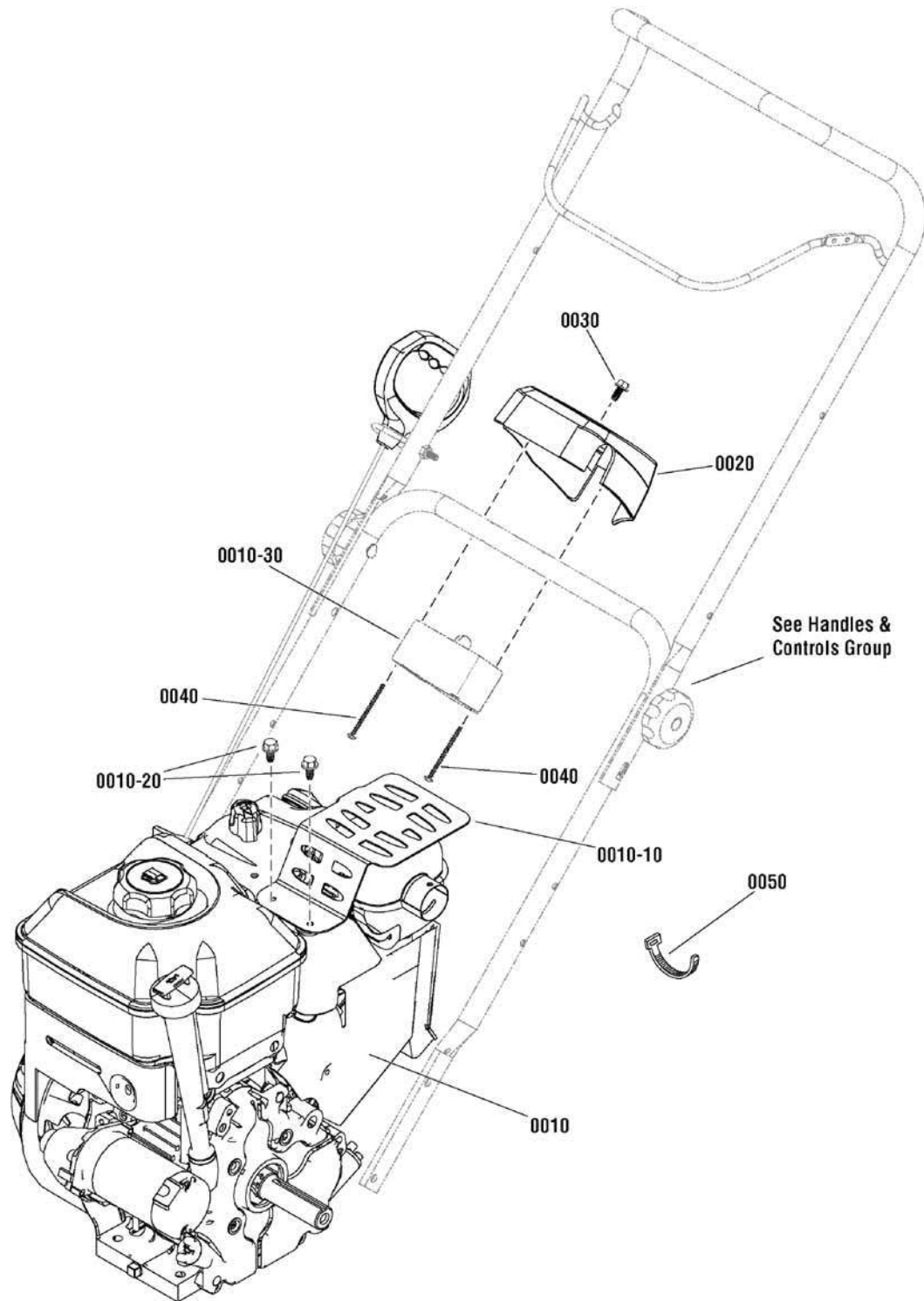
The above parts group applies to the following Mfg. Nos.:

1695875 - 8TP 22" Singl
1695876 - 8TP 22" Singl
1695877 - 9TP 22" Singl
1695879 - 8TP 22" Singl

Engine Group - 8TP & 9TP

NOTE: Unless noted otherwise,
use the standard hardware torque
specification chart.

989129



The above parts group applies to the following Mfg. Nos.:

- 1695875 - 8TP 22" Singl
- 1695876 - 8TP 22" Singl
- 1695877 - 9TP 22" Singl
- 1695879 - 8TP 22" Singl

Engine Group - 8TP & 9TP

REF NO	PART NO.	QTY.	DESCRIPTION
0010	12A103-0148-E8	1	* ENGINE, Briggs & Stratton, 8TP (Engine Model: 12A103-0148-E8)
0010	12D104-0135-E8	1	* ENGINE, Briggs & Stratton, 9TP (Engine Model: 12D104-0135-E8)
0010-10	797003	1	* GUARD, Muffler
0010-20	699854	3	* SCREW, Muffler Guard, Hex Washer Had
0010-30	-----	1	* STARTER, 110V
0010-30	-----	1	* STARTER, 230V
0020	1750032	1	HOUSING, Starter, 110V
0020	1750033	1	HOUSING, Starter, 230V (CE/Export Only)
0030	1750447	1	SCREW, Hex Washer Head, Trilob, 1/4-20 x 1/2
0040	1750593	2	SCREW, Pan Head Phillips, Plast., 8-16 x 2-1/8
0040	1750592	2	SCREW, Pan Head Phillips, Plast., 8-16 x 2-1/2 (CE/Export Only)
0050	720393	4	TIE STRAP, 5.6" Lg

Not for
Reproduction

Footnotes

Note* See your local Briggs & Stratton distributor for parts and service.

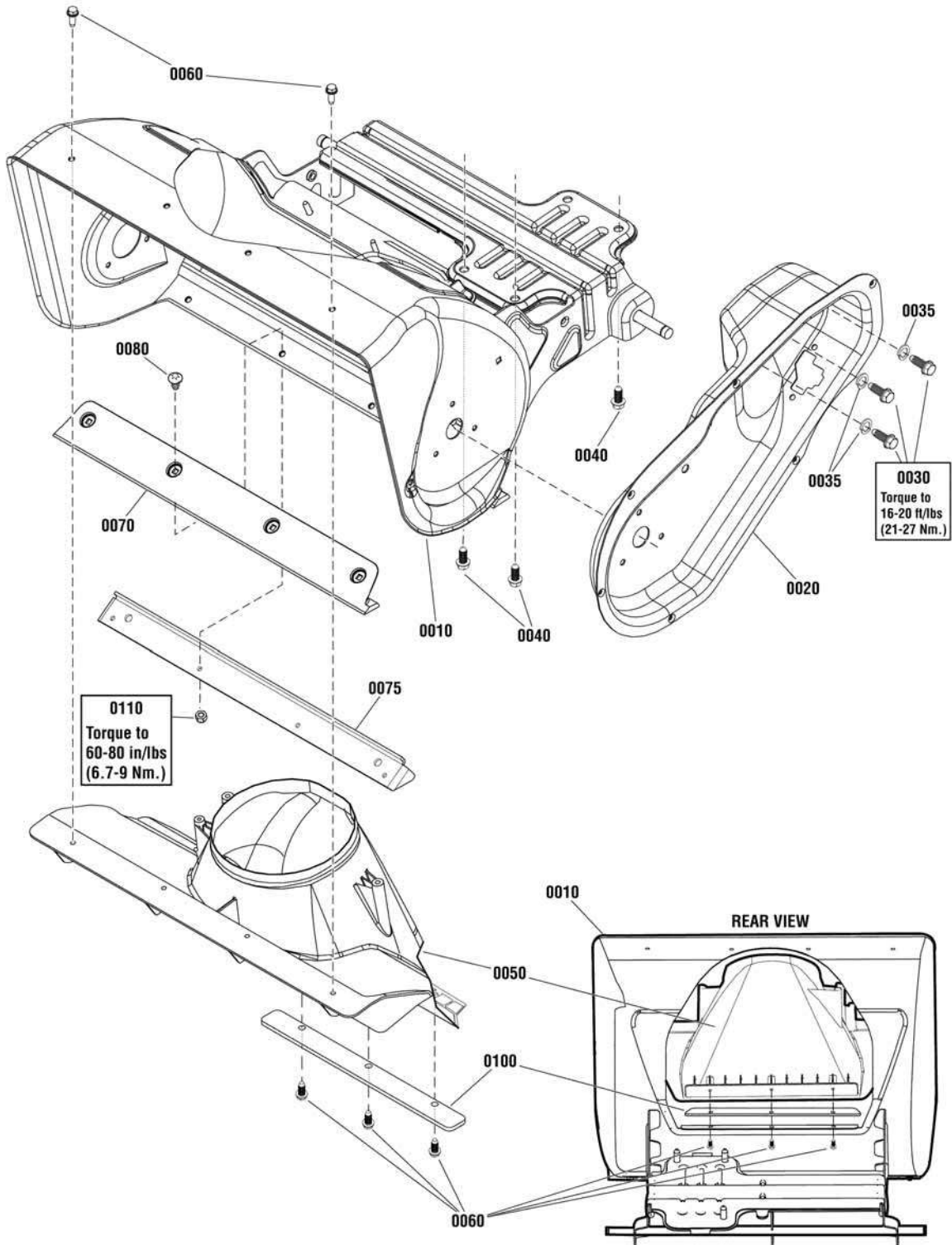
The above parts group applies to the following Mfg. Nos.:

1695875 - 8TP 22" Singl
1695876 - 8TP 22" Singl
1695877 - 9TP 22" Singl
1695879 - 8TP 22" Singl

Frame Group

NOTE: Unless noted otherwise,
use the standard hardware torque
specification chart.

988893



The above parts group applies to the following Mfg. Nos.:

- 1695875 - 8TP 22" Singl
- 1695876 - 8TP 22" Singl
- 1695877 - 9TP 22" Singl
- 1695879 - 8TP 22" Singl

Frame Group

REF NO	PART NO.	QTY.	DESCRIPTION
0010	1739225A	1	FRAME ASSEMBLY
0020	1739100A	1	HOUSING, Drive
0030	1752876	3	CAPSCREW, Hex Head, 5/16-24 x 5/8
0035	1917356	3	WASHER, Lock, 5/16
0040	75246	3	SCREW, Hex Washer Head, Taptite, 3/8-16 x 1-1/4
0050	1739555	1	CHIMNEY
0060	1750444	5	SCREW, Hi-Low, 1/4-15 x 3/4
0070	1752606	1	SCRAPER BAR
0075	1752660A	1	SUPPORT, Scraper Blade
0080	5025299X5	4	SCREW, Allen Head, 1/4-20 x 5/8
0100	1751553BZ	1	* SPACER, Chimney
0110	1752935	4	NUT, Hex Lock, Nylon, 1/4-20

Not for
Reproduction

Footnotes

Note * Not required on Model 1695877 after S/N 2014621249; Model 1695875 after S/N: 2014621675; Model 1695876 after S/N: 2014656950

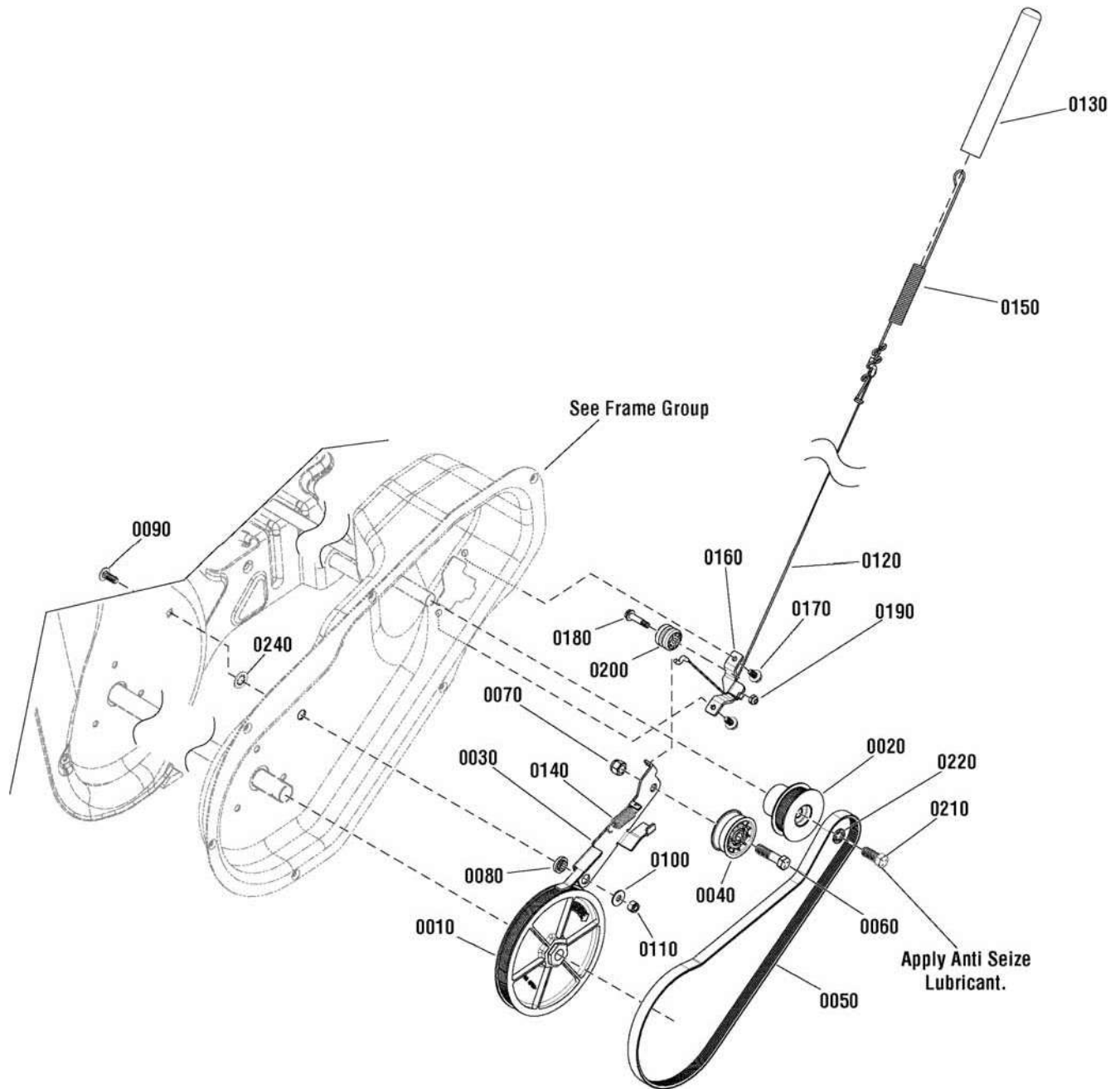
The above parts group applies to the following Mfg. Nos.:

1695875 - 8TP 22" Singl
1695876 - 8TP 22" Singl
1695877 - 9TP 22" Singl
1695879 - 8TP 22" Singl

Auger Drive Group

NOTE: Unless noted otherwise,
use the standard hardware torque
specification chart.

988894



The above parts group applies to the following Mfg. Nos.:

1695875 - 8TP 22" Singl
1695876 - 8TP 22" Singl
1695877 - 9TP 22" Singl
1695879 - 8TP 22" Singl

Auger Drive Group

REF NO	PART NO.	QTY.	DESCRIPTION
0010	1739730	1	PULLEY, Driven
0020	1739179	1	PULLEY, Driver
0030	1739526	1	ARM, Idler, Drive
0040	722378	1	IDLER, Plastic all Bearing
0050	1739338	1	BELT, Drive
0060	720192	1	CAPSCREW, Hex Head, 3/8-16X1-1/2
0070	7091299	1	NUT, Nylock, 3/8
0080	1739709	1	SPACER, Idler Arm
0090	1931318	1	BOLT, Carriage, 1/4-20 x 3/4 G5
0100	7091253	1	WASHER, Flat, .281 X 3/4 x 1/2
0110	7091603	1	NUT, Nylock, 1/4
0120	727331	1	CABLE, Handle
0130	1739935	1	BOOT, Clutch Spring
0140	1750226	1	SPRING, Idler
0150	1750315	1	SPRING, Extension
0160	1750329	1	BRKT, Cable Guide
0170	1750447	2	SCREW, Hex Washer Head, Trilob, 1/4-20 x 1/2
0180	1750594	1	CAPSCREW, Hex Shoulder, 1/4 x 3/4
0190	7090376	1	NUT, Locking, #10
0200	724621	1	SPOOL CABLE, Auger Control
0210	720016	1	CAPSCREW, Hex Head, 3/8-24 x 1
0220	22237	1	WASHER, Locking, 3/8
0240	1960518	1	NUT, Push, 1/4

Not for
Reproduction

Footnotes

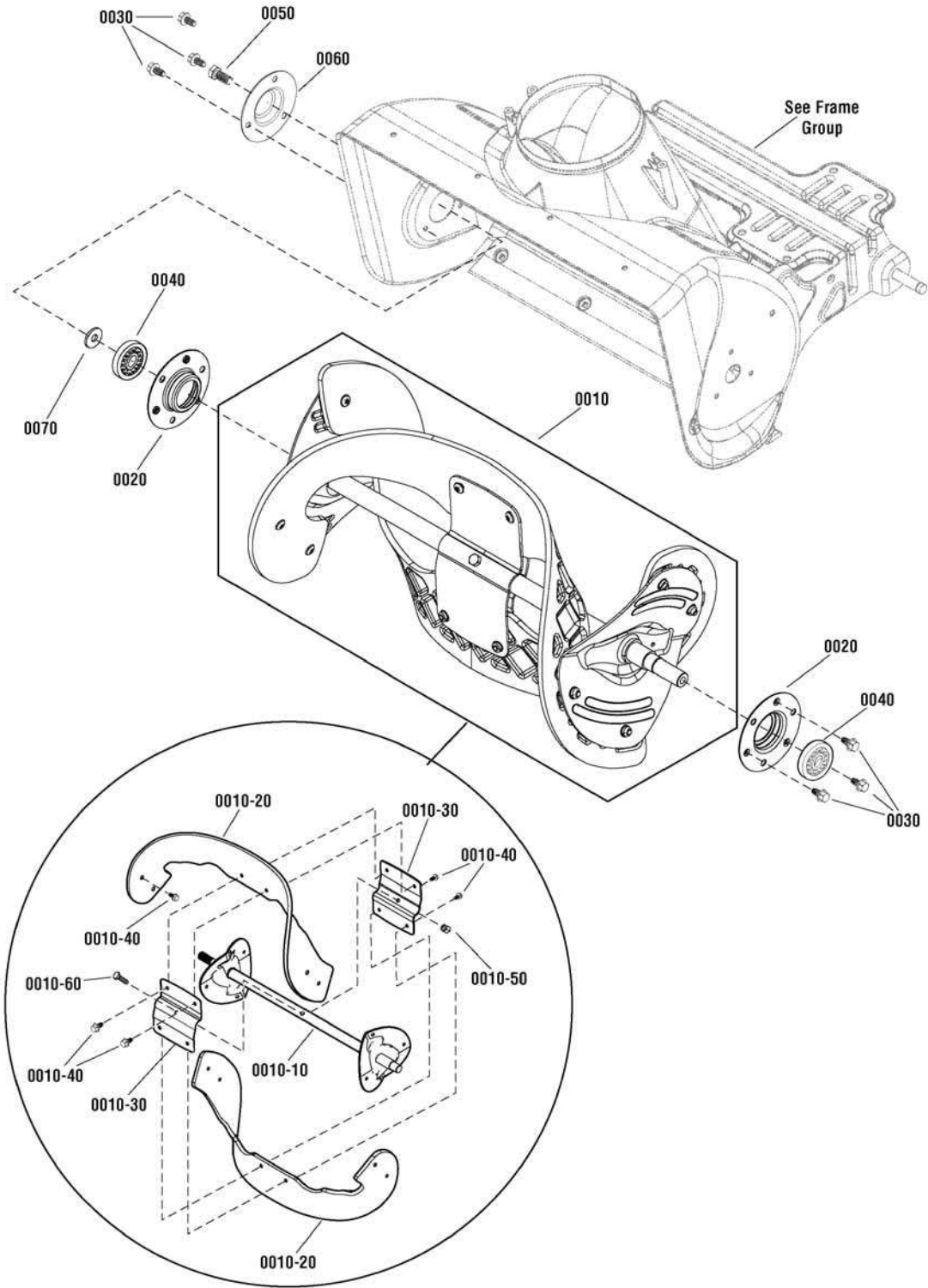
The above parts group applies to the following Mfg. Nos.:

1695875 - 8TP 22" Singl
1695876 - 8TP 22" Singl
1695877 - 9TP 22" Singl
1695879 - 8TP 22" Singl

Auger Group

NOTE: Unless noted otherwise,
use the standard hardware torque
specification chart.

988895



The above parts group applies to the following Mfg. Nos.:

- 1695875 - 8TP 22" Singl
- 1695876 - 8TP 22" Singl
- 1695877 - 9TP 22" Singl
- 1695879 - 8TP 22" Singl

Auger Group

REF NO	PART NO.	QTY.	DESCRIPTION
0010	1751388	1	AUGER ASSEMBLY, Complete (Includes Ref. Nos. 0010-10, 0010-20, 0010-30, 0010-40, 0010-50 & 0010-60)
0010-10	-----	1	* AUGER SHAFT ASSEMBLY
0010-20	-----	2	** FLIGHT, Auger
0010-30	-----	2	* PLATE, Auger, Center
0010-40	7090999	12	SCREW, Pan Head Torx 1/4 x 5/8
0010-50	7091603	1	NUT, Nylock, 1/4-20
0010-60	51374	1	CAPSCREW, Hex Head, 1/4-20 X 1 1/2, G5
0020	1739228	2	RETAINER, Bearing
0030	1750447	6	SCREW, Hex Washer Head, Trilob, 1/4-20 x 1/2
0040	1705897	2	BEARING, Ball, 11/16 x 1-9/16 x 15/32
0050	22142	1	CAPSCREW, Hex Head, 5/16-18 x 3/4
0060	1739229A	1	CAP, BEARING
0070	7900022	1	WASHER, Flat, 7/8 x 21/64
--	1687489	1	KIT, Auger Flight (Includes Ref. Nos. 0010-20 & 0010-40)

Not for
Reproduction

Footnotes

* Not a servicable part, order complete Auger Assembly

** Not a servicable part, order Auger Flight Kit 1687489YP

The above parts group applies to the following Mfg. Nos.:

1695875 - 8TP 22" Singl

1695876 - 8TP 22" Singl

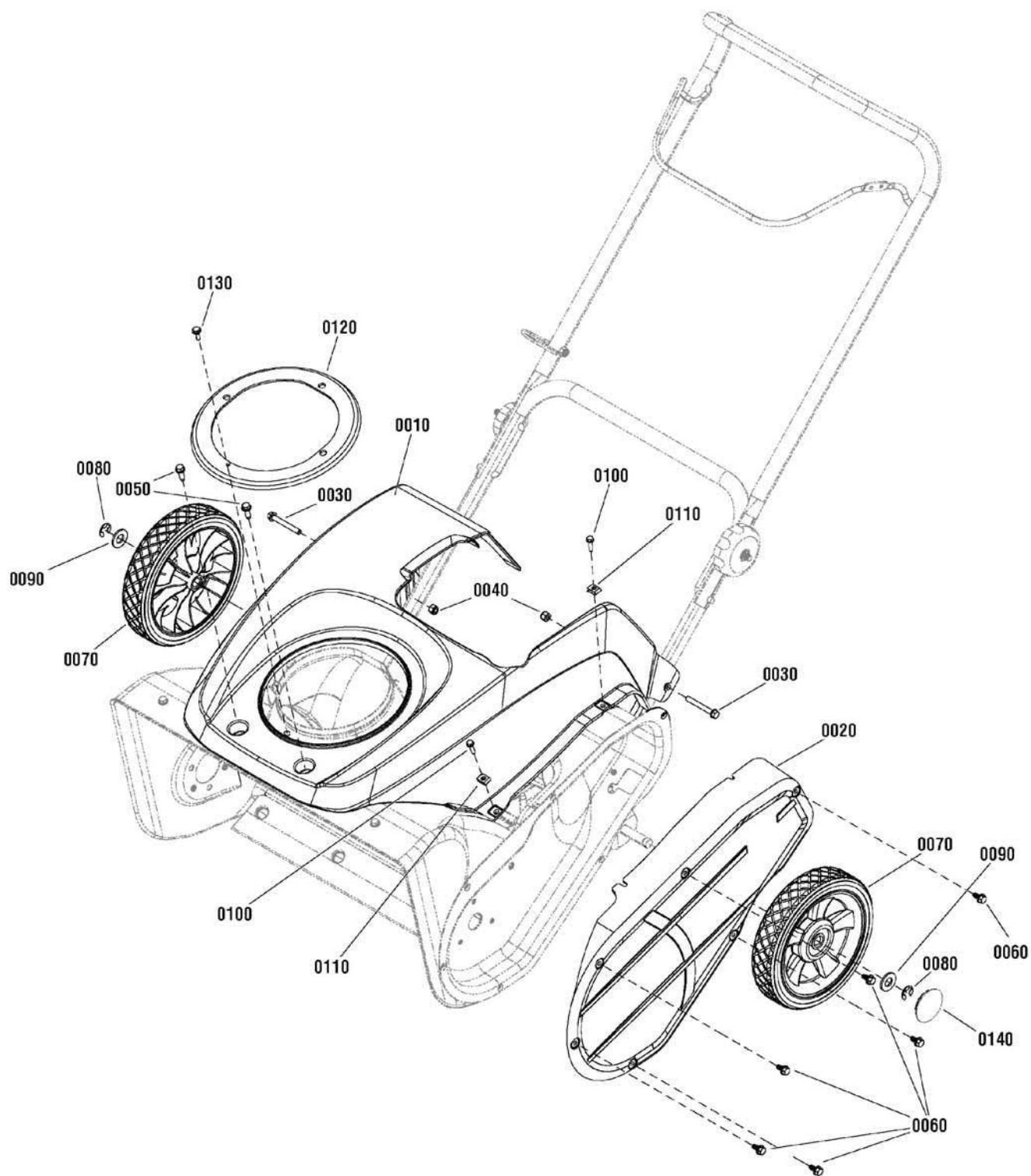
1695877 - 9TP 22" Singl

1695879 - 8TP 22" Singl

Wheel & Body Covering Group

NOTE: Unless noted otherwise,
use the standard hardware torque
specification chart.

988900



The above parts group applies to the following Mfg. Nos.:

- 1695875 - 8TP 22" Singl
- 1695876 - 8TP 22" Singl
- 1695877 - 9TP 22" Singl
- 1695879 - 8TP 22" Singl

Wheel & Body Covering Group

REF NO	PART NO.	QTY.	DESCRIPTION
0010	1739958	1	COVER, Top, Orange (Used on Manual Chute Rotation Models)
0010	1752321	1	COVER, Top, Orange (Used on Remote Chute Rotation Models)
0020	1739599	1	COVER, Drive Case, Black
0030	1750777	2	CAPSCREW, Hex Washer Head, 1/4 x 20 x 2
0040	7091603	2	NUT, Nylock, 1/4
0050	1750444	2	SCREW, Hi-Low, 1/4-15 x 3/4
0060	1750447	6	SCREW, Hex Washer Head, Trilob, 1/4-20 x 1/2
0070	311237	2	WHEEL, 2 x 8, Plastic 1/2, SILVER
0080	192050	2	E-RING, Axle, 1/2
0090	7025074	2	WASHER, Flat, 17/32 x 5/8
0100	1750638	2	CAPSCREW, Hex Washer Head, 10-24 x 3/4
0110	885118	2	NUT, U-Style Speed, #10
0120	1739752	1	MOISTURE COVER, Chute
0130	723361	1	SCREW, Hex Washer Head, #10-HL x 5/8
0140	1751540	2	HUBCAP

Not for
Reproduction

Footnotes

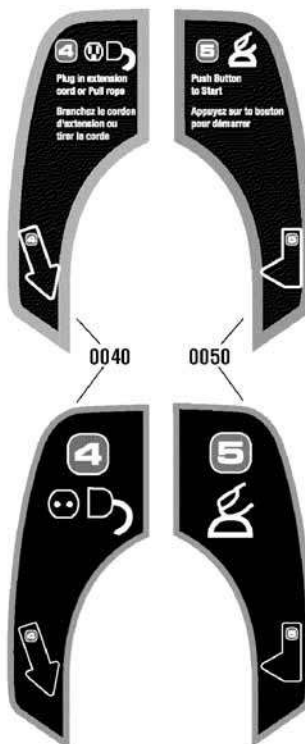
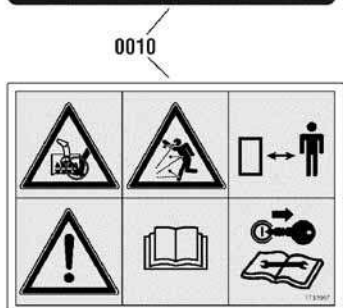
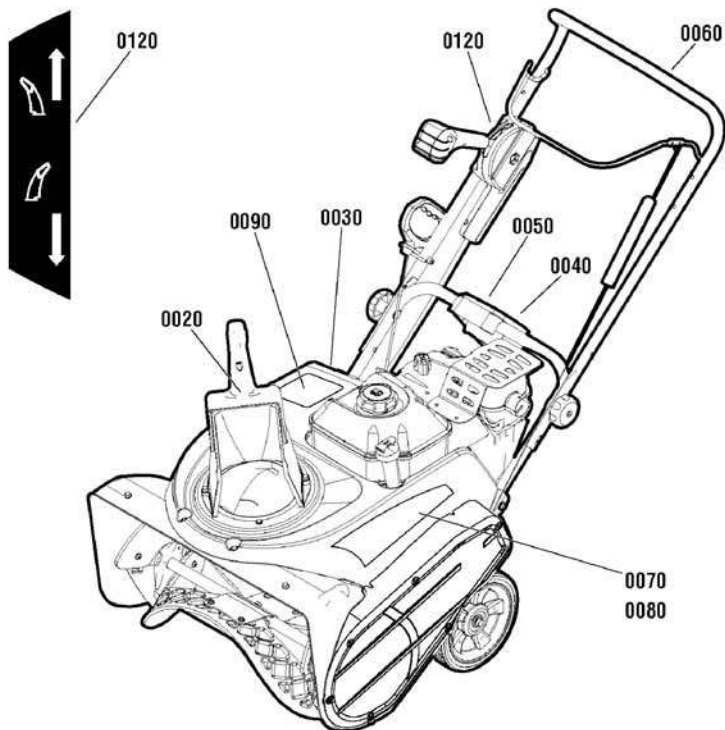
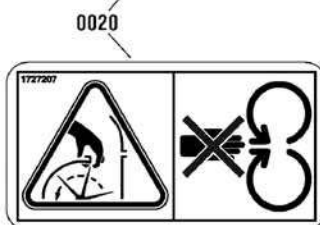
The above parts group applies to the following Mfg. Nos.:

1695875 - 8TP 22" Singl
1695876 - 8TP 22" Singl
1695877 - 9TP 22" Singl
1695879 - 8TP 22" Singl

Decals Group

NOTE: Unless noted otherwise, use the standard hardware torque specification chart.

989260



The above parts group applies to the following Mfg. Nos.:

- 1695875 - 8TP 22" Singl
- 1695876 - 8TP 22" Singl
- 1695877 - 9TP 22" Singl
- 1695879 - 8TP 22" Singl

Decals Group

REF NO	PART NO.	QTY.	DESCRIPTION
0010	1739966	1	DECAL, Chute, FR-EN
0010	1739967	1	DECAL, Chute, International (CE/Export Only)
0020	1737865	1	DECAL, Danger, Chute, FR/ENG
0020	1727207	1	DECAL, Danger, Chute, International (CE/Export Only)
0030	1739970	1	DECAL, 1-2-3 Start, FR-EN
0030	1739971	1	DECAL, 1-2-3 Start, International (CE/Export Only)
0040	1750734	1	DECAL, 4, START, FR-EN
0040	1750735	1	DECAL, 4, START, International (CE/Export Only)
0050	1750736	1	DECAL, 5, START, FR-EN
0050	1750737	1	DECAL, 5, START, International (CE/Export Only)
0060	1739977	1	DECAL, Bail Engagement
0070	1739980	1	DECAL, Simplicity, LH
0080	1739981	1	DECAL, Simplicity, RH
0090	1750652	1	DECAL, Simplicity, Top, FR-EN (8TP Models)
0090	1750653	1	DECAL, Simplicity, Top, FR-EN (9TP MOdels)
0090	1739982	1	DECAL, Simplicity, Top, International (CE/Export Only)
0120	1739976	1	DECAL, Chute Rotation (Remote Models Only)

Not for
Reproduction

Footnotes

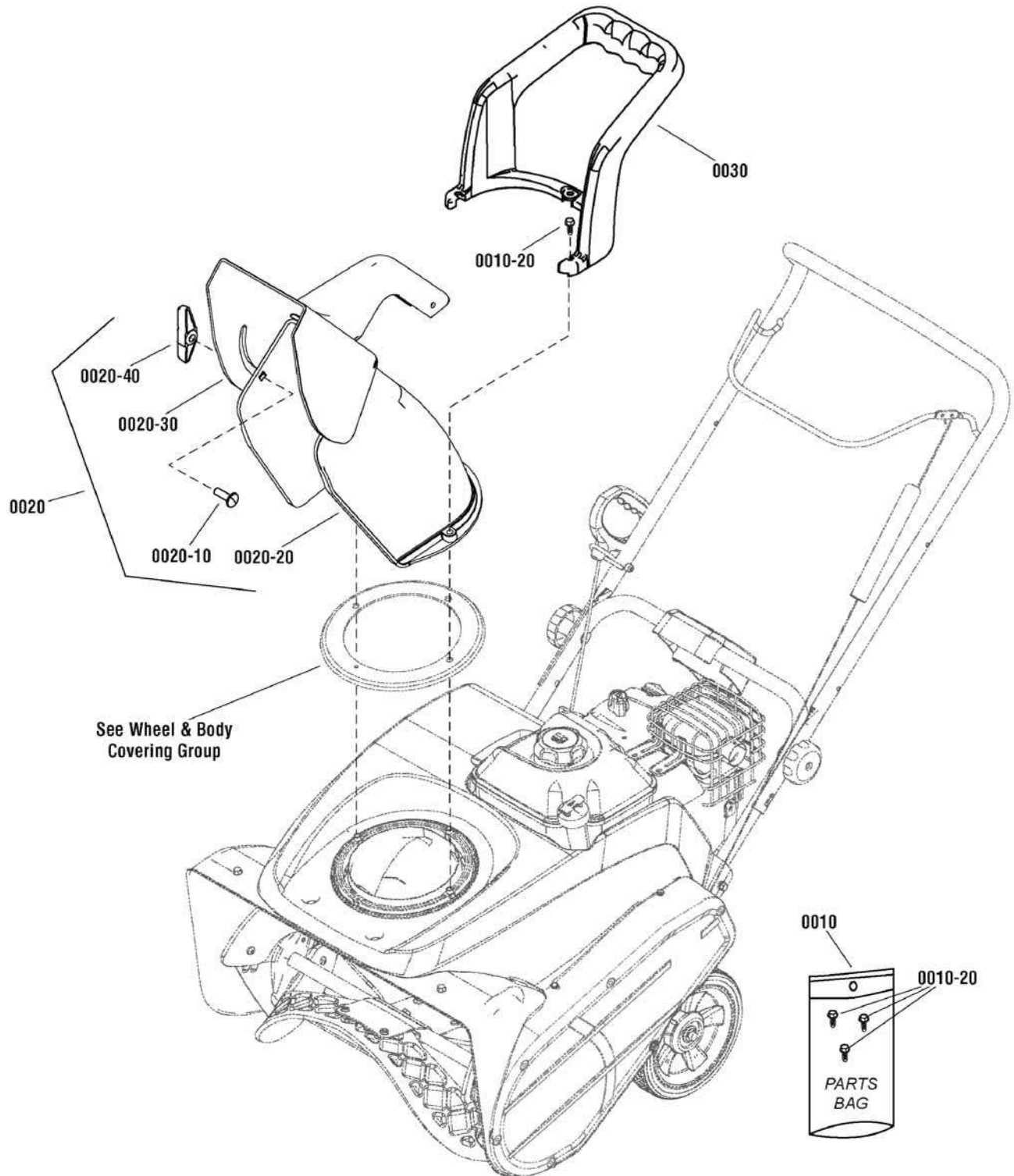
The above parts group applies to the following Mfg. Nos.:

1695875 - 8TP 22" Singl
1695876 - 8TP 22" Singl
1695877 - 9TP 22" Singl
1695879 - 8TP 22" Singl

Chute Group - Manual

NOTE: Unless noted otherwise, use the standard hardware torque specification chart.

989289



The above parts group applies to the following Mfg. Nos.:

1695875 - 8TP 22" Singl

Chute Group - Manual

REF NO	PART NO.	QTY.	DESCRIPTION
0010	1751007	1	PARTS BAG
0010-20	7900023	3	SCREW, Self Tapping, 1/4-15 x 1-1/4
0020	1739755	1	CHUTE ASSEMBLY, Manual (Incl. Ref. Nos. 0020-10, 0020-20, 0020-30 & 0020-40)
0020-10	1931335	1	BOLT, Carriage, 5/16-18 x 1 G5
0020-20	-----	1	* CHUTE
0020-30	-----	1	* DEFLECTOR, Chute
0020-40	7035744	1	KNOB, Wing, 5/16-18
0030	1739692	1	HANDLE, Chute Rotation

Not for
Reproduction

Footnotes

* Not a servicable part, order complete Chute Assembly (item 0020).

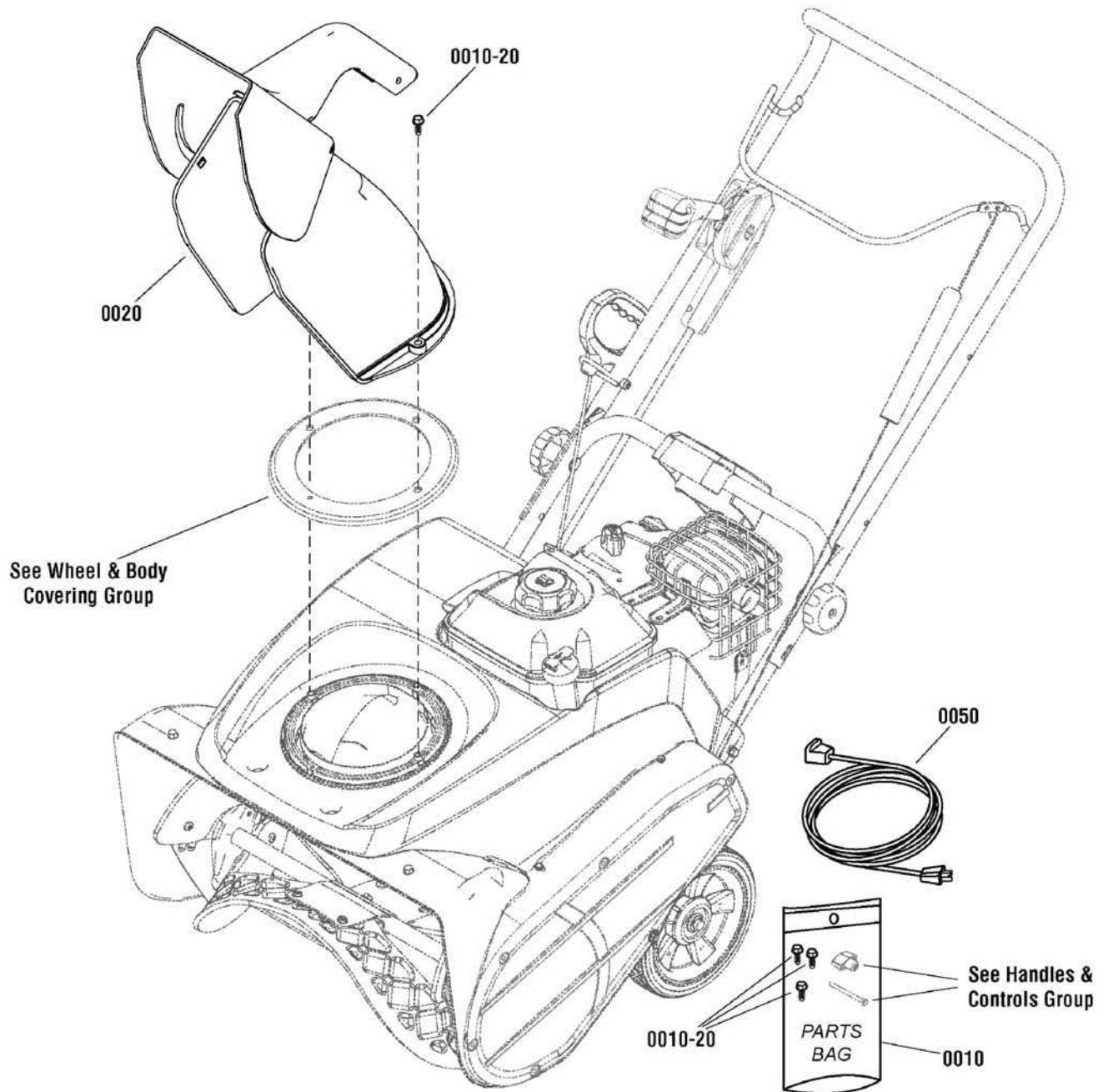
The above parts group applies to the following Mfg. Nos.:

1695875 - 8TP 22" Singl

Chute Group - Remote

NOTE: Unless noted otherwise, use the standard hardware torque specification chart.

989354



The above parts group applies to the following Mfg. Nos.:

1695876 - 8TP 22" Singl

1695877 - 9TP 22" Singl

1695879 - 8TP 22" Singl

Chute Group - Remote

REF NO	PART NO.	QTY.	DESCRIPTION
0010	1751170YP	1	PARTS BAG
0010-20	1751399YP	3	SCREW, Hex Washer Head, HI-LO, 1/4-15 x 1-1/4
0020	1739522	1	CHUTE ASSEMBLY
0050	724865	1	CORD, 10FT (CE/Export only)

Not for
Reproduction

Footnotes

The above parts group applies to the following Mfg. Nos.:

1695876 - 8TP 22" Singl

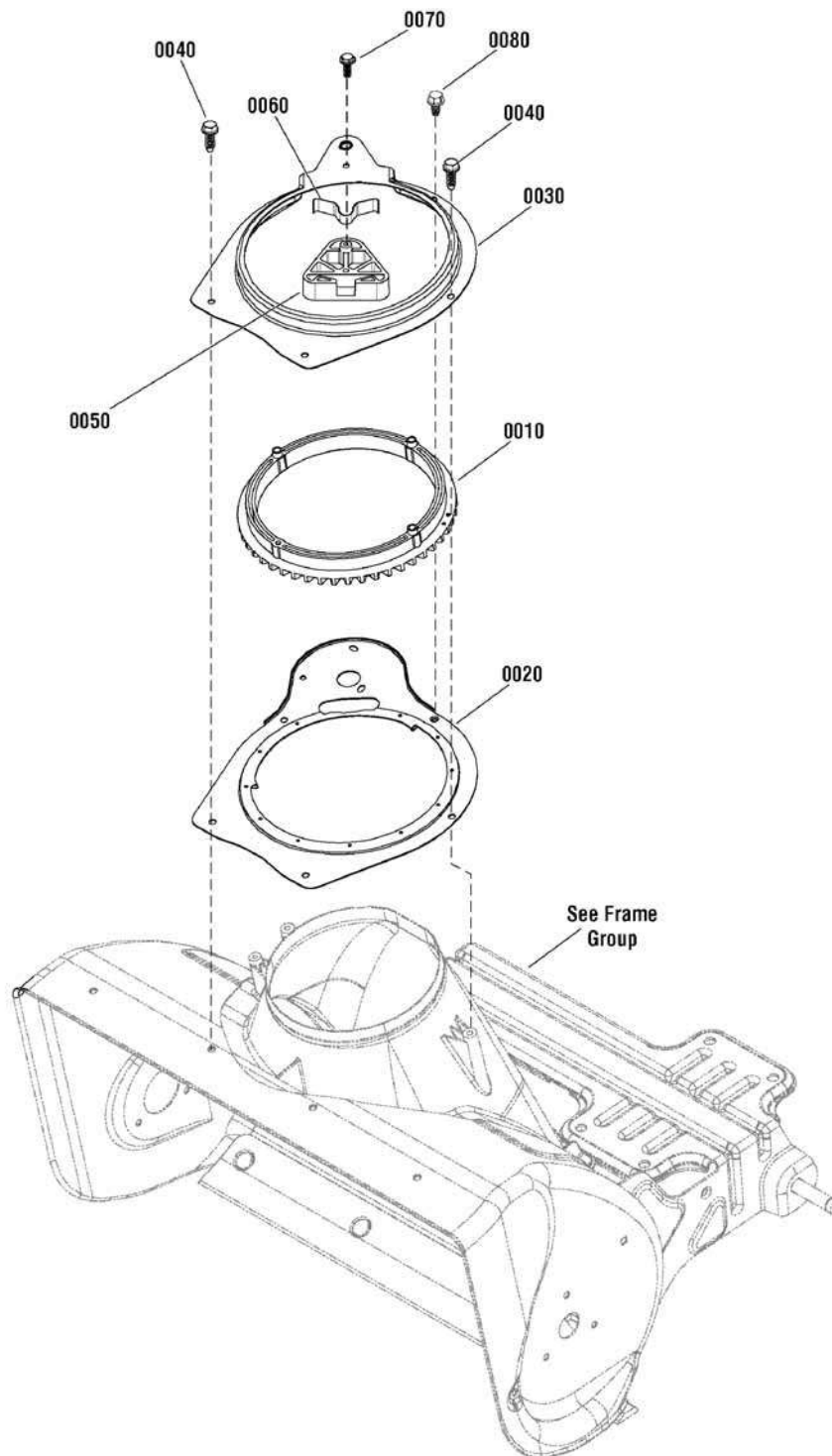
1695877 - 9TP 22" Singl

1695879 - 8TP 22" Singl

Chute Rotation Group - Manual

NOTE: Unless noted otherwise,
use the standard hardware torque
specification chart.

988905



The above parts group applies to the following Mfg. Nos.:

1695875 - 8TP 22" Singl

Chute Rotation Group - Manual

REF NO	PART NO.	QTY.	DESCRIPTION
0010	1739123	1	GEAR, Chute Rotation
0020	1739364	1	PLATE, Chute Mounting
0030	1739365	1	RETAINER, Chute Gear
0040	1750444	2	SCREW, Hi-Low, 1/4-15 x 3/4
0050	1739294	1	BLOCK, Stop
0060	1739293	1	SPRING
0070	1960001	1	SCREW, Hex Washer Head, Plast., 10-14 x 5/8
0080	1750447	1	SCREW, Hex Washer Head, Trilob, 1/4-20 x 1/2

Not for
Reproduction

Footnotes

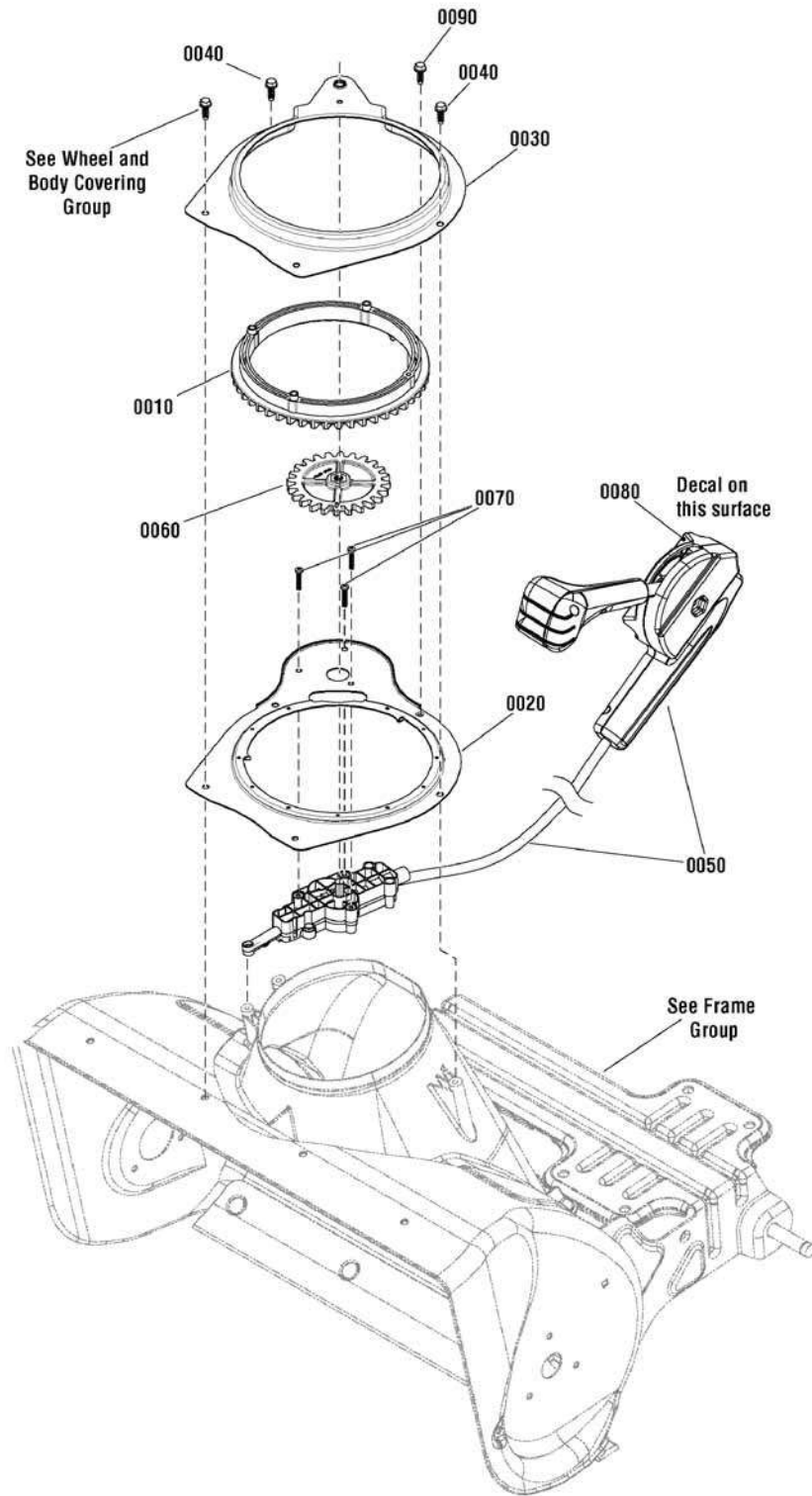
The above parts group applies to the following Mfg. Nos.:

1695875 - 8TP 22" Singl

Chute Rotation Group - Remote

NOTE: Unless noted otherwise,
use the standard hardware torque
specification chart.

988904



The above parts group applies to the following Mfg. Nos.:

1695876 - 8TP 22" Singl

1695877 - 9TP 22" Singl

1695879 - 8TP 22" Singl

Chute Rotation Group - Remote

REF NO	PART NO.	QTY.	DESCRIPTION
0010	1739123	1	GEAR, Chute Rotation
0020	1739364	1	PLATE, Chute Mounting
0030	1739365	1	RETAINER, Chute Gear
0040	1750444	2	SCREW, 1/4-15 x 3/4
0050	1739754	1	CHUTE ROTATION ASSEMBLY, Remote
0060	1738955	1	GEAR, Chute Rotation
0070	7100225	4	SCREW, Phillips, Pan Head Plastite, 8-16 x 1
0080	1739976	1	DECAL, Chute Rotation
0090	1750447	1	SCREW, Hex Washer Head, Trilob, 1/4-20 x 1/2

Not for
Reproduction

Footnotes

The above parts group applies to the following Mfg. Nos.:

1695876 - 8TP 22" Singl

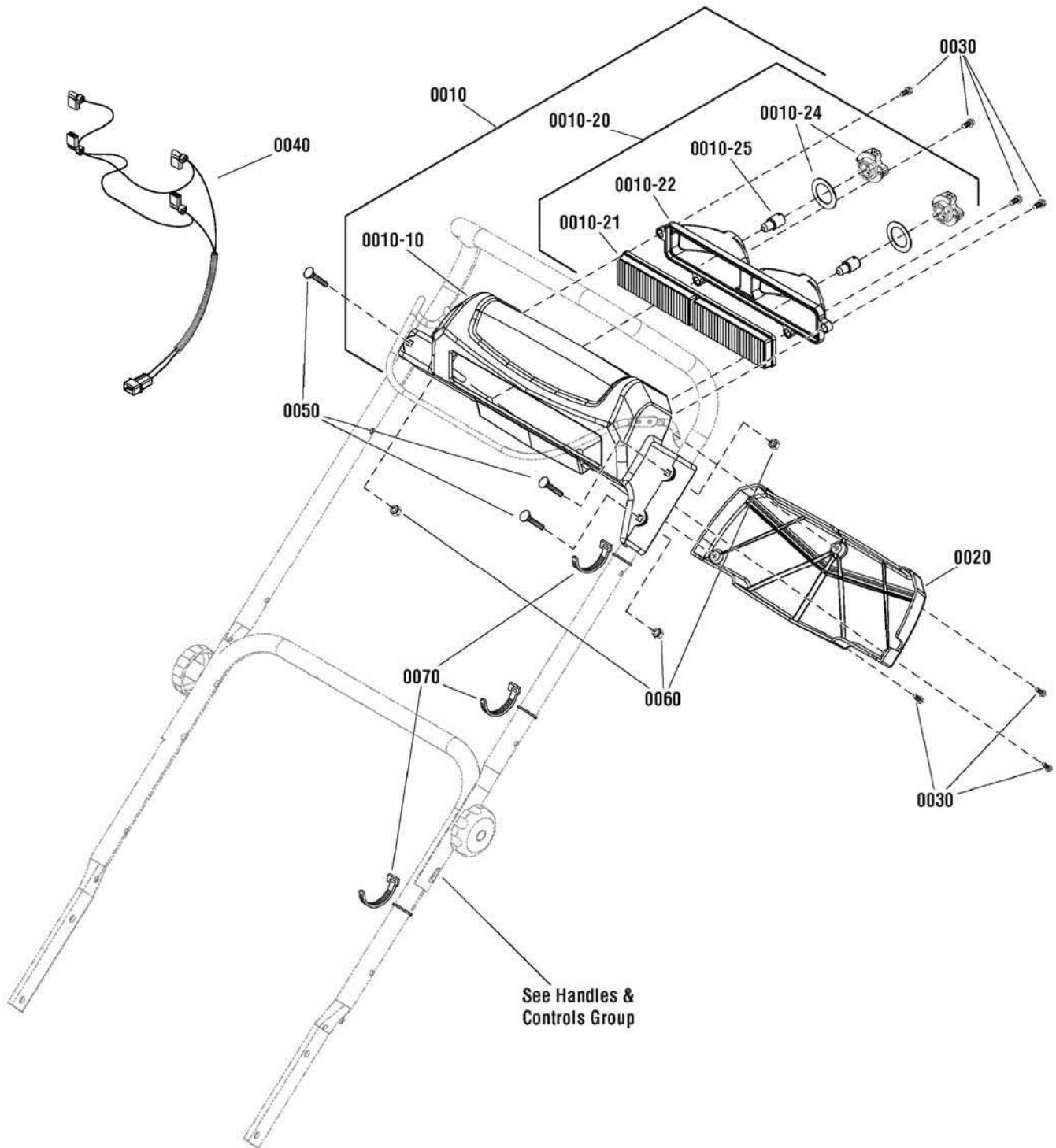
1695877 - 9TP 22" Singl

1695879 - 8TP 22" Singl

Panel Group - Headlight

NOTE: Unless noted otherwise,
use the standard hardware torque
specification chart.

989246



The above parts group applies to the following Mfg. Nos.:

1695877 - 9TP 22" Singl

Panel Group - Headlight

REF NO	PART NO.	QTY.	DESCRIPTION
0010	-----	1	PANEL & LIGHT ASSEMBLY
0010-10	1750732	1	PANEL, Headlight
0010-20	1750730	1	HEADLIGHT ASSEMBLY, Twin
0010-21	1736177	1	LENS, Twin Headlight (Included with Ref. No. 0010-20)
0010-22	1736178	1	DEFLECTOR, Twin Headlight (Included with Ref. No. 0010-20)
0010-25	-----	2	* LAMP, Halogen. 12V 20W (Included with Ref. No. 0010-20)
0010-24	1736180	2	SOCKET & GASKET ASSEMBLY, Headlight (Included with Ref. No. 0010-20)
0020	1750875	1	COVER, Headlight Panel
0030	7091105	7	CAPSCREW, Hex Washer Head, #10-16 x 1/2
0040	1738286	1	WIRING HARNESS, Headlight
0050	1960633	3	BOLT, Carriage, 1/4-20 x 1-1/2, GR 5
0060	7091603	3	NUT, Nylock, 1/4
0070	720393	3	CABLE TIE

Not for
Reproduction

Footnotes

Note* See your local hardware store for replacement bulbs.

The above parts group applies to the following Mfg. Nos.:

1695877 - 9TP 22" Singl

Not for
Reproduction

Not for
Reproduction

Not for
Reproduction

Hardware Identification & Torque Specifications

Torque Specification Chart								
FOR STANDARD METRIC MACHINE HARDWARE (Tolerance ± 20%)								
Property Class	5.6		8.8		10.9		12.9	
	Class 5.6		Class 8.8		Class 10.9		Class 12.9	
Size Of Hardware	in/lbs	Nm.	in/lbs	Nm.	in/lbs	Nm.	in/lbs	Nm.
	ft/lbs		ft/lbs		ft/lbs		ft/lbs	
M3	5.88	.56	13.44	1.28	19.2	1.80	22.92	2.15
M4	13.44	1.28	30.72	2.90	43.44	4.10	52.56	4.95
M5	26.4	2.50	60.96	5.75	5.97	8.10	7.15	9.7
M6	44.64	4.3	7.3	9.9	10.3	14	12.1	16.5
M7	5.2	7.1	12.1	16.5	16.9	23	19.9	27
M8	7.7	10.5	17.7	24	25	34	29	40
M10	15	21	35	48	50	67	59	81
M12	26	36	61	83	86.2	117	103	140
M14	42	58	101	132	136	185	162	220
M16	64	88	147	200	210	285	250	340
M18	89	121	202	275	287	390	346	470
M20	126	171	290	390	405	550	486	660
M22	169	230	390	530	559	745	656	890
M24	217	295	497	375	708	960	840	1140
M27	320	435	733	995	1032	1400	1239	1680
M30	435	590	995	1350	1401	1900	1681	2280
M33	590	800	1349	1830	1902	2580	2278	3090
M36	759	1030	1740	2360	2441	3310	2935	3980
M39	988	1340	2249	3050	3163	4290	3798	5150

Torque Specification Chart						
FOR STANDARD MACHINE HARDWARE (Tolerance ± 20%)						
Hardware Grade	No Marks		SAE Grade 5		SAE Grade 8	
	SAE Grade 2		SAE Grade 5		SAE Grade 8	
Size Of Hardware	in/lbs	Nm.	in/lbs	Nm.	in/lbs	Nm.
	ft/lbs		ft/lbs		ft/lbs	
8-32	19	2.1	30	3.4	41	4.6
8-36	20	2.3	31	3.5	43	4.9
10-24	27	3.1	43	4.9	60	6.8
10-32	31	3.5	49	5.5	68	7.7
1/4-20	66	7.6	8	10.9	12	16.3
1/4-28	76	8.6	10	13.6	14	19.0
5/16-18	11	15.0	17	23.1	25	34.0
5/16-24	12	16.3	19	25.8	29	34.0
3/8-16	20	27.2	30	40.8	45	61.2
3/8-24	23	31.3	35	47.6	50	68.0
7/16-14	30	40.8	50	68.0	70	95.2
7/16-20	35	47.6	55	74.8	80	108.8
1/2-13	50	68.0	75	102.0	110	149.6
1/2-20	55	74.8	90	122.4	120	163.2
9/16-12	65	88.4	110	149.6	150	204.0
9/16-18	75	102.0	120	163.2	170	231.2
5/8-11	90	122.4	150	204.0	220	299.2
5/8-18	100	136	180	244.8	240	326.4
3/4-10	160	217.6	260	353.6	386	525.0
3/4-16	180	244.8	300	408.0	420	571.2
7/8-9	140	190.4	400	544.0	600	816.0
7/8-14	155	210.8	440	598.4	660	897.6
1-8	220	299.2	580	788.8	900	1,244.0
1-12	240	326.4	640	870.4	1,000	1,360.0

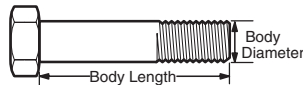
The guides and ruler furnished below are designed to help you select the appropriate hardware.



Nut, M8

Thread Diameter (mm)
Inside Diameter (in)
Threads per inch

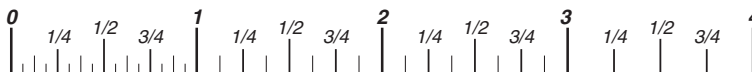
Nut, 1/2-16



Screw, M8- 1.25 x 25

Thread Diameter (mm)
Body Diameter
Distance between threads (mm)
Threads per inch
Body Length (mm)
Body Length (in)

Screw, 1/2- 16 x 2



Standard Hardware Sizing

When a washer or nut is identified as **1/2"** (M8), this is the *Nominal size*, meaning the *inside diameter* is 1/2 inch (8mm metric thread diameter); if a second number is present it represents the *threads per inch* (distance between threads).

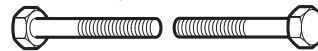
When bolt or capscrew is identified as **1/2 - 16 x 2"** (M8 - 1.25 x 50), this means the *Nominal size*, or body diameter is 1/2 inch (8mm metric thread diameter), the second number, 16, represents the *threads per inch*, (1.25 thread diameter). The final number is the body length of the bolt or screw, 2 inches (50mm).

NOTES

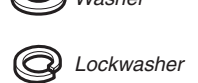
- These torque values are to be used for all hardware excluding: locknuts, self-tapping screws, thread forming screws, sheet metal screws and socket head setscrews.
- Recommended seating torque values for locknuts:
 - for prevailing torque locknuts - use 65% of grade 5 torques.
 - for flange whizlock nuts and screws - use 135% of grade 5 torques.
- Unless otherwise noted on assembly drawings, all torque values must meet this specification.

Common Hardware Types

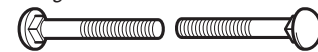
Hex Head Capscrew



Washer



Carriage Bolt



Hex Nut

Wrench & Fastener Size Guide

1/4" Bolt or Nut Wrench—7/16"	5/16" Bolt or Nut Wrench—1/2"	3/8" Bolt or Nut Wrench—9/16"	7/16" Bolt or Nut Wrench (Bolt)—5/8" Wrench (Nut)—11/16"	1/2" Bolt or Nut Wrench—3/4"
M6 Bolt or Nut Wrench—10mm	M8 Bolt or Nut Wrench—13mm	M10 Bolt or Nut Wrench—17mm	M12 Bolt or Nut Wrench—19mm	M14 Bolt or Nut Wrench—22mm

Not for
Reproduction

**IT IS THE POLICY OF BRIGGS & STRATTON CORP. TO IMPROVE ITS PRODUCTS
WHENEVER IT IS POSSIBLE AND PRACTICAL TO DO SO. WE RESERVE THE RIGHT TO
MAKE CHANGES OR ADD IMPROVEMENTS AT ANY TIME WITHOUT INCURRING ANY
OBLIGATION TO MAKE SUCH CHANGES ON PRODUCTS.**

Briggs & Stratton Yard Power Products Group

3515 N. 124 Street / PO Box 702
Wauwatosa, WI 53222 USA

www.simplicitymfg.com

© Copyright 2011 by Briggs & Stratton Corporation
Milwaukee, WI, USA. All rights reserved