



Parts Manual



Legacy XL / 2000 / 2900 Series Garden Tractors & Mower Decks RMO

27HP Product

Mfg. No.	Description
1695229	Legacy XL, 27HP B&S Diesel 2WD RMO & ACS
1695232	2927, 27HP B&S Diesel 2WD RMO
2690659	Legacy XL, 27HP B&S Diesel 2WD RMO & ACS and 54" Mower Deck
2690660	Legacy XL, 27HP B&S Diesel 4WD RMO & ACS and 54" Mower Deck
2690661	Legacy XL, 27HP B&S Diesel 4WD RMO & ACS and 54" Mower Deck
2690662	2927, 27HP B&S Diesel 2WD RMO and 54" Mower Deck
2690663	2927, 27HP B&S Diesel 4WD 540 3-PT RMO and 54" Mower Deck (CE/Export)
2690664	2927, 27HP B&S Diesel 4WD 540 3-PT RMO and 54" Mower Deck (CE/Export)
2690665	2027, 27HP B&S Diesel 4WD 540 3-PT RMO and 54" Mower Deck (CE/Export)
2690666	2027, 27HP B&S Diesel 4WD 540 3-PT and 54" Mower Deck (CE/Export)

Mower Decks

Mfg. No.	Description
1694507	54" Mower Deck (CE/Export)
1694509	54" Mower Deck (CE/Export)

Manual Part No. 1735446

Revision A

Rev. Date: 7/9/2010

Not for
Reproduction

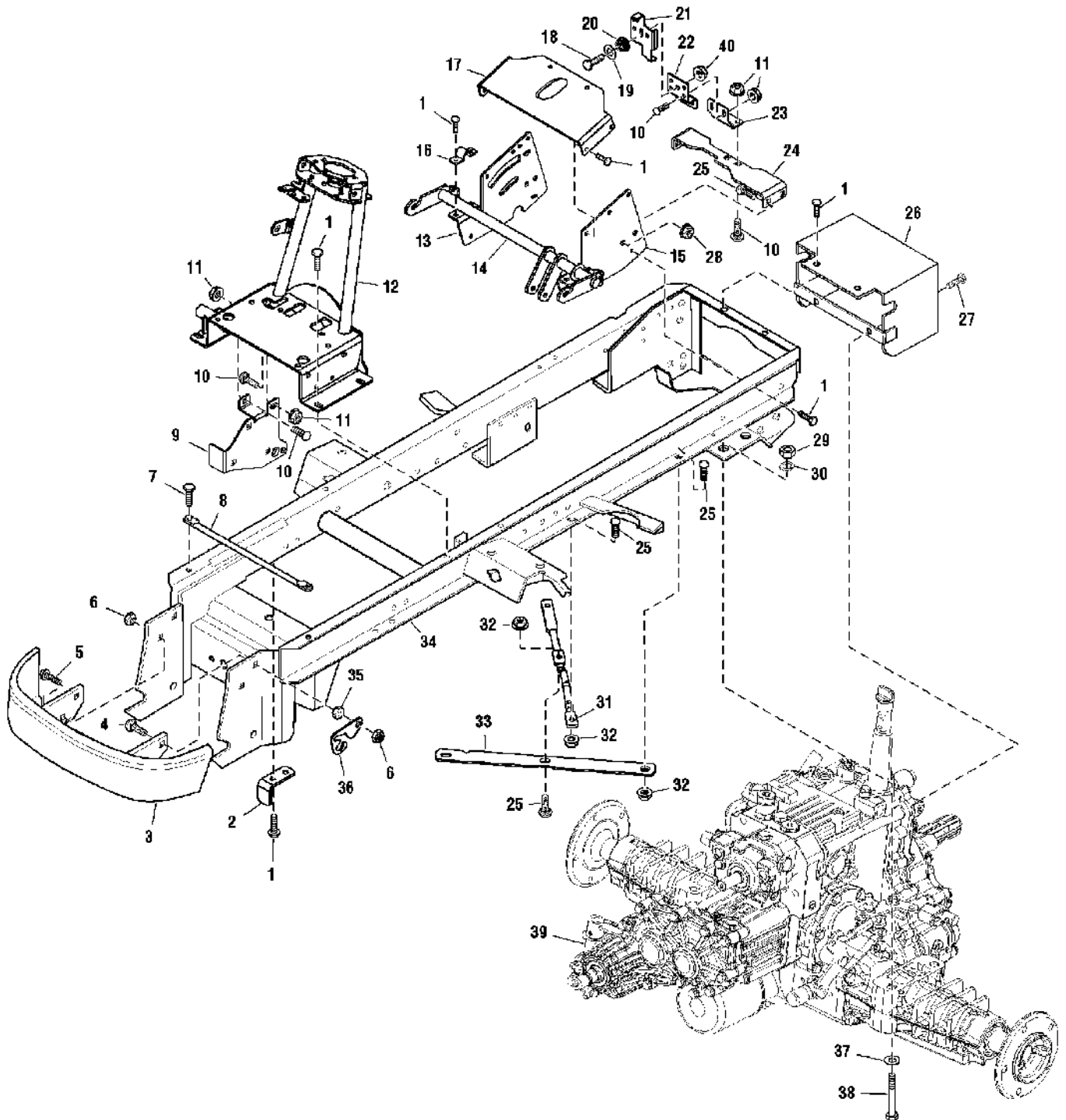
PRODUCT COMPONENTS	PAGES
Frame & Transmission Group	4
Steering & Front Axle Group	6
Engine Group - 27HP Briggs & Stratton Diesel Diagram 1	10
Engine Group - 27HP Briggs & Stratton Diesel Diagram 2	14
Hydraulic Group	18
Controls Group	22
Electrical Group - 27HP Briggs & Stratton Diesel	26
Body Group	30
Wheel & Tires Group	34
Decals Group - Brand & Model	36
Decals Group - Safety & Common	38
3-Point Hitch Group	40
54" Mower Deck - Drive Group	42
54" Mower Deck - Height Adjustment & Roller Group	44
54" Mower Deck - Housing, Arbors & Blade Group	48
Torque Specification Chart	Inside Back Cover

Not for
Reproduction

Frame & Transmission Group

986308

NOTE: Unless noted otherwise,
use the standard hardware torque
specification chart.



The above parts group applies to the following Mfg. Nos.:

1695229 - Legacy XL	2690663 - 2927
1695232 - 2927	2690664 - 2927
2690659 - Legacy XL	2690665 - 2027
2690660 - Legacy XL	2690666 - 2027
2690661 - Legacy XL	
2690662 - 2927	

Frame & Transmission Group

REF NO	PART NO.	QTY.	DESCRIPTION
1	1664847SM	22	CAPSCREW, Hex, Washer Head, Taptite, 5/16-18 x 3/4, Black
2	1725752ASM	1	BRACKET, Upstop
3	1725171ASM	1	BUMPER & BRACKETS ASSEMBLY
4	1960706SM	2	CARRIAGE BOLT-RD, 1/2-13 x 2, Black
5	1920328SM	2	CAPSCREW, Hex Head, 1/2-13 x 1-1/2, Black
6	1960708SM	4	NUT, Hex, Lock ESNA, 1/2-13
9	1724838ASM	1	SUPPORT, Control Valve
10	1931333SM	6	CARRIAGE BOLT, 5/16-18 x 3/4, Black
11	1960684SM	6	NUT, Hex, KEPS 5/16-18, Black
12	1724108ASM	1	TOWER ASSEMBLY
13	1725095ASM	1	SUPPORT, Seat Support, RH
14	1724765ASM	1	SHAFT ASSEMBLY
15	1725096ASM	1	SUPPORT, Seat Support, LH
16	1720147ASM	2	STRAP
17	1725094ASM	1	SUPPORT, Seat Deck
18	1921333SM	1	CAPSCREW, Hex Head, 5/16-18 x 1, Black
19	1919326SM	1	WASHER, 5/16, Black
20	2153010SM	1	SPRING, Compression, Conocal
21	1724248SM	1	BRACKET-FREE WHEEL 10GA
22	1725308SM	1	SUPPORT, Free Wheel Latch
23	1725081ASM	1	SUPPORT, Dump Valve
24	1724244ASM	1	BRACKET, Torque Strap
25	1931350SM	9	CARRIAGE BOLT, 3/8-16 x 1 Black
26	1724817ASM	1	SHIELD & BRACKET ASSEMBLY
27	1960677SM	2	CAPSCREW, Hex Head, M12-1.75 x 25MM, (540 PTO Models Only)
28	1960687SM	4	NUT, Hex, Flange ESNA, 3/8-16, Black
29	1960423SM	4	NUT, Hex Flange Center Lock, M12-1.25, Black
30	1916966SM	4	LOCKWASHER, 1/2, Black
31	1725635SM	1	ROD
32	1960680SM	5	NUT, Hex, KEPS 3/8-16, Black
33	1724936ASM	1	BRACE, Cross
34	1724144ASM	1	FRAME ASSEMBLY
35	1913744SM	2	NUT, Hex, Jam, 1/2-13, Black
36	1726019ASM	2	LOCK, Hood
37	1924361SM	4	WASHER, 1/2
38	1960482SM	4	CAPSCREW, Hex Head, M12-1.25 x100MM, Black
39	1724561SM	1	TRANSMISSION ASSEMBLY, 4WD, K92C, W/540
39	1723939SM	1	TRANSMISSION ASSEMBLY, 2WD, K92A
39	1723940SM	1	TRANSMISSION ASSEMBLY, 4WD, K92B
40	1960686SM	1	NUT, Hex, Flange ESNA, 5/16-18, Black
41	1726474SM	1	COVER, PTO Shaft
42	1960268SM	1	BOLT, 3/8-16 x 1 1/4
43	1960373SM	1	SCREW, Hex, Washer 5/16-18 x 1.000

Footnotes

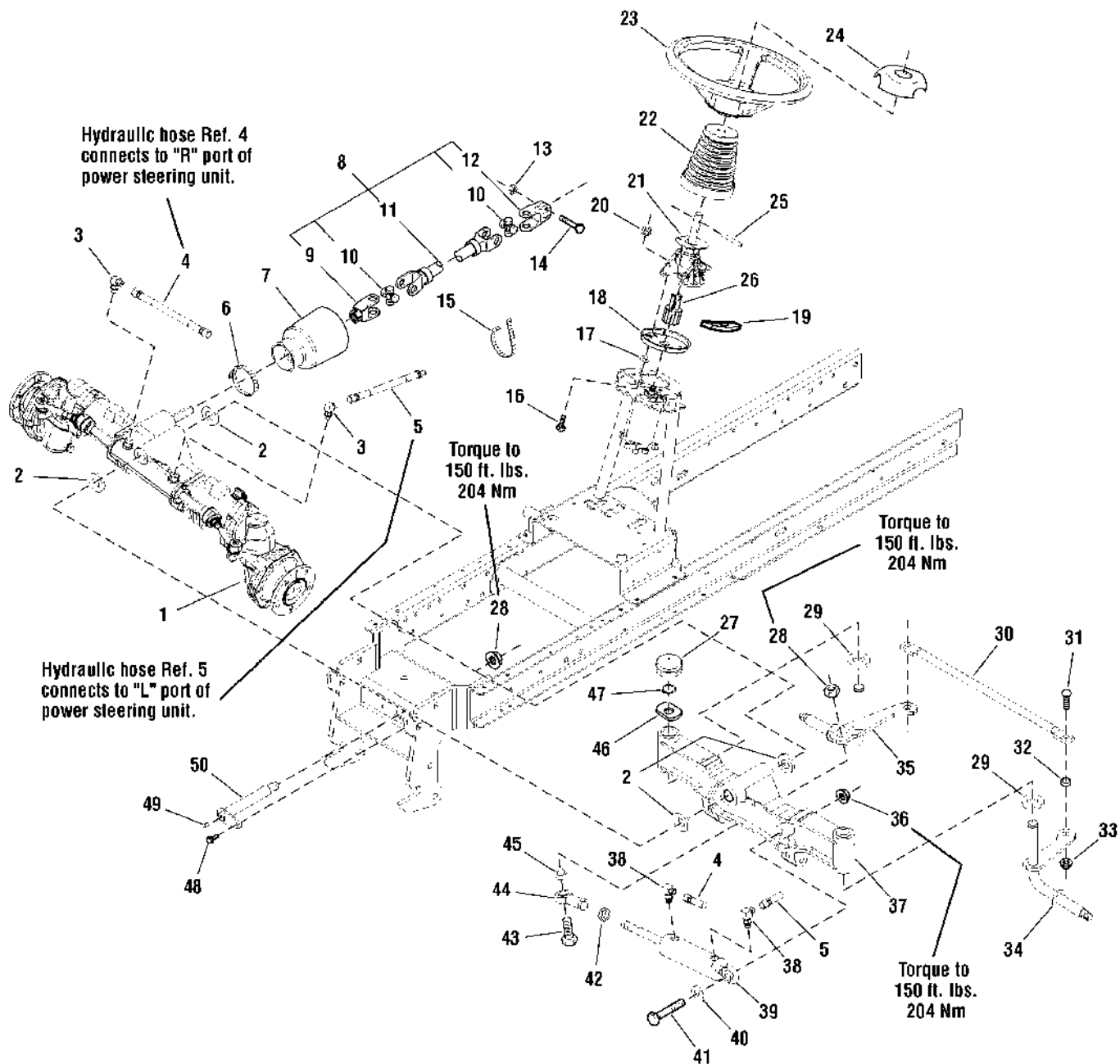
The above parts group applies to the following Mfg. Nos.:

1695229 - Legacy XL 2690663 - 2927
 1695232 - 2927 2690664 - 2927
 2690659 - Legacy XL 2690665 - 2027
 2690660 - Legacy XL 2690666 - 2027
 2690661 - Legacy XL
 2690662 - 2927

Steering & Front Axle Group

986313

NOTE: Unless noted otherwise, use the standard hardware torque specification chart.



The above parts group applies to the following Mfg. Nos.:

- | | |
|---------------------|----------------|
| 1695229 - Legacy XL | 2690663 - 2927 |
| 1695232 - 2927 | 2690664 - 2927 |
| 2690659 - Legacy XL | 2690665 - 2027 |
| 2690660 - Legacy XL | 2690666 - 2027 |
| 2690661 - Legacy XL | |
| 2690662 - 2927 | |

Steering & Front Axle Group

REF NO	PART NO.	QTY.	DESCRIPTION
1	1724273SM	1	AXLE ASSEMBLY
2	1960201SM	2	WASHER
3	1725013SM	2	FITTING, Elbow Hose
4	1725012SM	1	HOSE ASSEMBLY, Hydraulic
5	1724890SM	1	HOSE ASSEMBLY, Hydraulic
6	1725617SM	1	CLAMP, Worm Hose
7	1725581SM	1	COVER, Drive Shaft
8	1724562SM	1	SHAFT ASSEMBLY
9	*	1	YOKE & FLANGE, Drive Shaft
10	*	2	CROSS & BEARING KIT, Includes Grease Fitting
11	*	1	YOKE & TUBE ASSEMBLY
12	*	1	YOKE, Drive Shaft
13	1919439SM	2	NUT, Hex, Lock, 3/8-16 NC
14	1921971SM	2	CAPSCREW, Hex Head, 3/8-16 x 1-3/4 G5
15	1701011SM	2	TIE, Self Locking
16	1960223SM	3	CARRIAGE BOLT, 5/16-16 x 1 G5
17	1933988SM	3	NUT, Push, 1/4
18	1724685ASM	1	PLATE, Steering
19	1723898SM	2	SPACER, Flat
20	1960636SM	3	NUT-HEX KEPS 5/16-18 BLK
21	1726026SM	1	TILT STEERING UNIT, 2 Holes, Legacy
22	1724368YP	1	BELLOWS, Tilt Steering Unit With Slot
23	1724576SM	1	STEERING WHEEL
24	1715920SM	1	CAP, Steering Wheel
25	1960540SM	1	PIN, Spring
26	1725294SM	1	ADAPTER, Splined
27	1725651SM	2	COVER, Spindle
28	1960691SM	2/1	NUT, Hex, Toplock Flange 3/4-10
29	1960701SM	2	WASHER
30	1724923ASM	1	ROD, Tie
31	1960135SM	2	CARRIAGE BOLT, 7/16-14 x 1-1/4
32	1716953SM	2	SPACER, .390 LG With Powdered Metal
33	1960688SM	2	NUT, Hex, Toplock Flange, 7/16-14
34	1724574SM	1	SPINDLE & ARM ASSEMBLY, Left Hand
35	1724575SM	1	SPINDLE & ARM ASSEMBLY, Right Hand
36	1960714SM	1	NUT, Hex, Toplock M16-2.00 BLACK
37	1725465SM	1	AXLE & BUSHINGS ASSEMBLY
38	1725021SM	2	FITTING, Elbow Hose
39	1724925SM	1	CYLINDER, Hydraulic Steering
40	1924366SM	3/1	WASHER, 0.625 (0.66IDX1.12X.11THK) BLACK
41	1960713SM	1	CAPSCREW-HEX HD M16-2.00 X110MM 8.8 BLACK
42	1922015SM	1	NUT, Hex Jam, 3/4-16
43	1960712SM	1	CAPSCREW, Hex Head, 3/4-10 x 2-1/2 G5
44	1717589SM	1	JOINT, Ball, 3/4-16

Footnotes

Note* Part number(s) not available at this time.

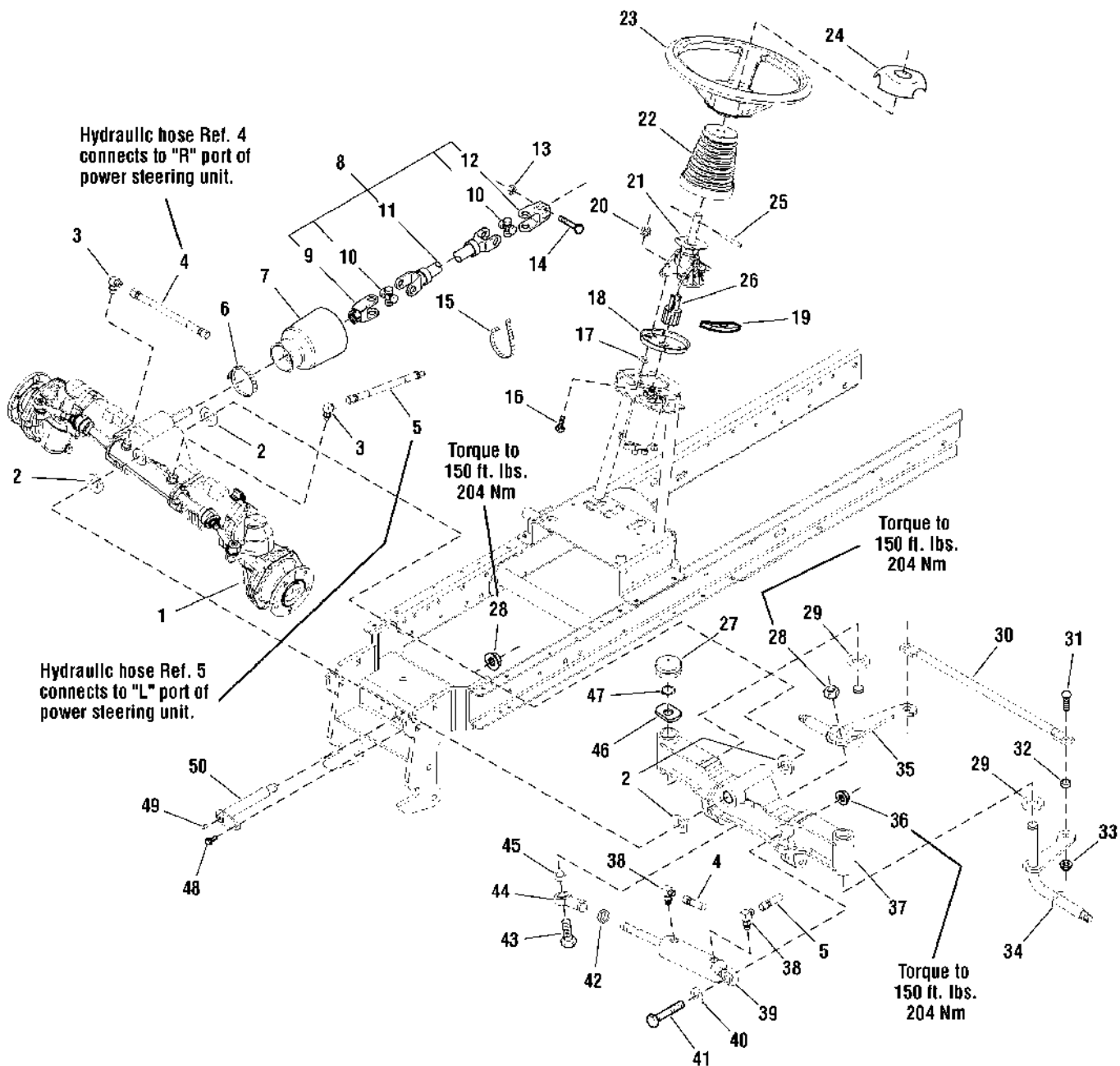
The above parts group applies to the following Mfg. Nos.:

1695229 - Legacy XL 2690663 - 2927
 1695232 - 2927 2690664 - 2927
 2690659 - Legacy XL 2690665 - 2027
 2690660 - Legacy XL 2690666 - 2027
 2690661 - Legacy XL
 2690662 - 2927

Steering & Front Axle Group

986313

NOTE: Unless noted otherwise, use the standard hardware torque specification chart.



The above parts group applies to the following Mfg. Nos.:

- | | |
|---------------------|----------------|
| 1695229 - Legacy XL | 2690663 - 2927 |
| 1695232 - 2927 | 2690664 - 2927 |
| 2690659 - Legacy XL | 2690665 - 2027 |
| 2690660 - Legacy XL | 2690666 - 2027 |
| 2690661 - Legacy XL | |
| 2690662 - 2927 | |

Steering & Front Axle Group

REF NO	PART NO.	QTY.	DESCRIPTION
45	1722461SM	1	SPACER, 3/8 LG With Powdered Metal
46	1722726SM	2	WASHER-SPCL 1.005ID 52.562 OD .06 THK YELLOW
47	2832577SM	2	RING, Retaining
48	1664847SM	1	SCREW, Hex Washer Head, Taptite, 5/16-18 x 3/4
50	1724841SM	1	SHAFT & ANCHOR ASSEMBLY, Pivot
49	1704314SM	1	FITTING, Lube, 1/4 Drive
51	1960576SM	1	NUT, Hex 5/8-18
52	1732090SM	1	SPACER, Grass Shield, 0.793 x 1-3/4 x 1/4
53	1732089SM	1	CUP, Spindle. 0.793HOLE E-COAT
54	2176111SM	1	O-RING 0.739 ID .070 WIDTH SAE-TYPE 1

Not for
Reproduction

Footnotes

Note* Part number(s) not available at this time.

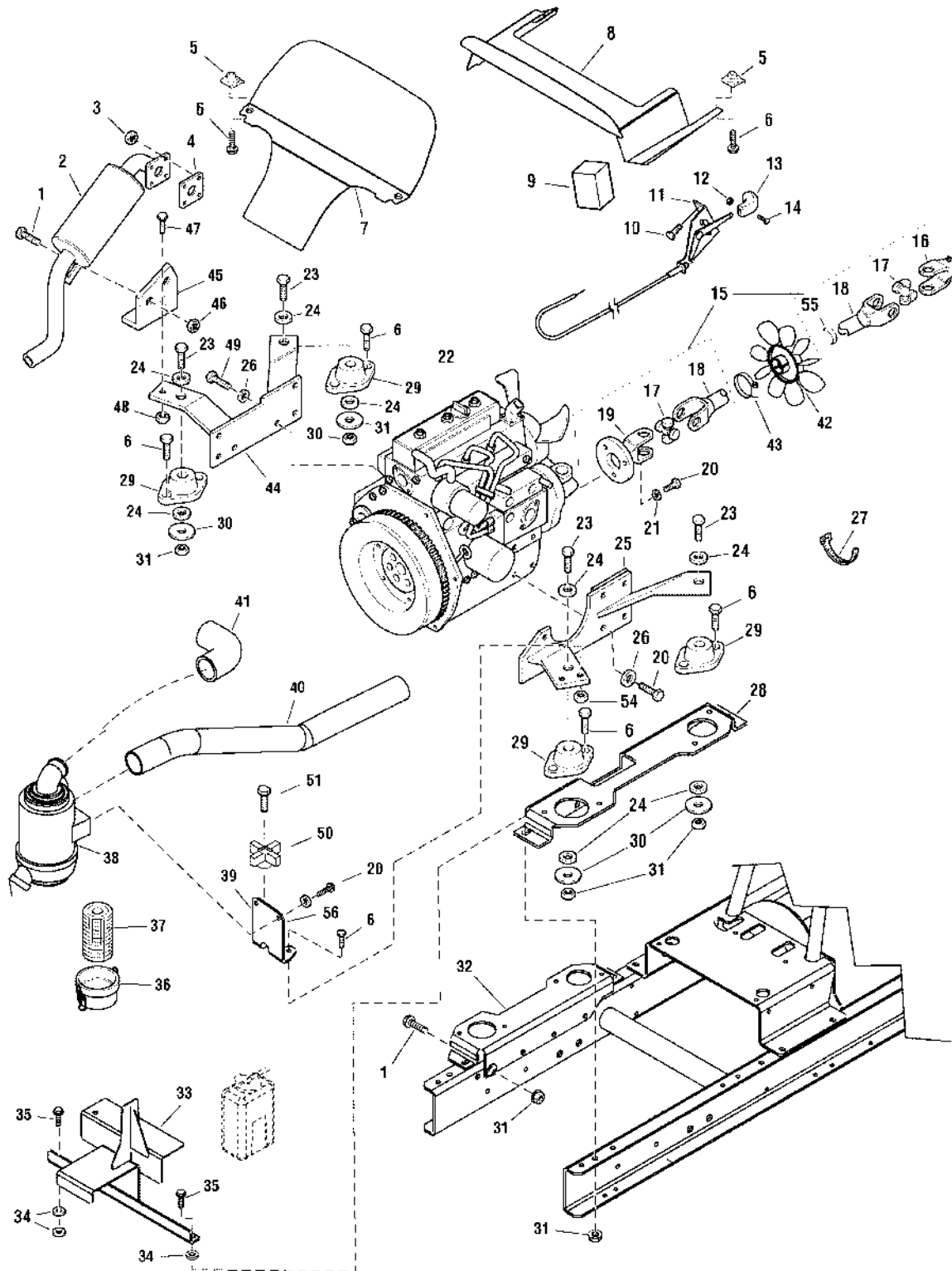
The above parts group applies to the following Mfg. Nos.:

1695229 - Legacy XL 2690663 - 2927
1695232 - 2927 2690664 - 2927
2690659 - Legacy XL 2690665 - 2027
2690660 - Legacy XL 2690666 - 2027
2690661 - Legacy XL
2690662 - 2927

Engine Group - 27HP Briggs & Stratton Diesel Diagram 1

986320D1

NOTE: Unless noted otherwise,
use the standard hardware torque
specification chart.



The above parts group applies to the following Mfg. Nos.:

- | | |
|---------------------|----------------|
| 1695229 - Legacy XL | 2690663 - 2927 |
| 1695232 - 2927 | 2690664 - 2927 |
| 2690659 - Legacy XL | 2690665 - 2027 |
| 2690660 - Legacy XL | 2690666 - 2027 |
| 2690661 - Legacy XL | |
| 2690662 - 2927 | |

Engine Group - 27HP Briggs & Stratton Diesel Diagram 1

REF NO	PART NO.	QTY.	DESCRIPTION
1	1934654SM	13	SCREW, Hex Whiz Lock Flange, 3/8-16 x 1
2	1727859SM	1	MUFFLER
3	*	4	NUT
4	*	1	BRACKET
5	1926018SM	6	NUT, Speed, 1/4-20, U Type
6	1664847SM	17	SCREW, Hex, Washer, Head, Taptite, 5/16-18 x 3/4
7	1725627ASM	1	SHIELD, Hood 18GA
8	1725590ASM	1	BAFFLE, Hood 18GA
9	1725731SM	2	SEAL, Foam 1-1/2 x 1-1/2, 2.8LG
10	1960578SM	2	SCREW, Hex, Washer Head, Taptite, 12-24 x 5/8
11	1725328SM	1	CONTROL, Throttle
12	1933896SM	1	NUT, Hex Lock, 10-24
13	1725337SM	1	KNOB, Slot
14	1960393SM	1	SCREW, Pan Head, PHILLIPS, 10-24 x 1
15	1724571SM	1	SHAFT ASSEMBLY, Drive (Includes Ref. Nos. 16, 17, 18 & 19)
16	*	1	YOKE, Drive Shaft
17	*	2	CROSS & BEARING KIT, Includes Grease Fitting
18	*	1	YOKE & TUBE ASSEMBLY
19	*	1	YOKE & FLANGE, Drive Shaft
20	1960347SM	10	CAPSCREW, Hex Head,
21	1917356SM	6	LOCKWASHER, Spring, 5/16
22	**	1	ENGINE, 26.5HP Briggs & Stratton Diesel, Model # 582447, Type # 0224, Trim # E2
23	1921972SM	4	CAPSCREW, Hex Head, 3/8-16 x 2-1/2, G5
24	1924940SM	8	WASHER, 3/8
25	1726580ASM	1	MOUNT ASSEMBLY, Engine, L.H.
26	1917356SM	12	LOCKWASHER, Spring, 5/16
27	1701011SM	3	TIE, Self Locking, 7.31LG
28	1724813ASM	1	MOUNT, Engine, L.H.
29	1718655SM	4	MOUNT, Engine, Rear
30	1718640SM	4	WASHER, 1/2
31	1960680SM	17	NUT, Hex KEPS, 3/8-16 Conical Washer
32	1724812ASM	1	MOUNT, Engine, R.H.
33	1725598ASM	1	HOLD DOWN ASSEMBLY, Battery
34	1922755SM	7	WASHER, 3/8
35	1928727SM	2	SCREW, Hex, Whiz Lock, Flange, 3/8-16 x 1-1/4
36	1734572SM	1	CAP, Air Cleaner
37	1734571SM	1	FILTER, Air Cleaner
38	1719546SM	1	AIR CLEANER ASSEMBLY
39	1725588ASM	1	BRACKET, Air Cleaner
40	1725630SM	1	HOSE, Air Inlet, 28LG
41	1726042SM	1	HOSE, Inlet
42	1725661SM	1	FAN
43	1725746SM	5	CLAMP, Hose, Worm
44	1726581ASM	1	MOUNT ASSEMBLY, Engine R.H.

Footnotes

Note* Part number(s) not available at this time.

Note* Part number(s) not available at this time.

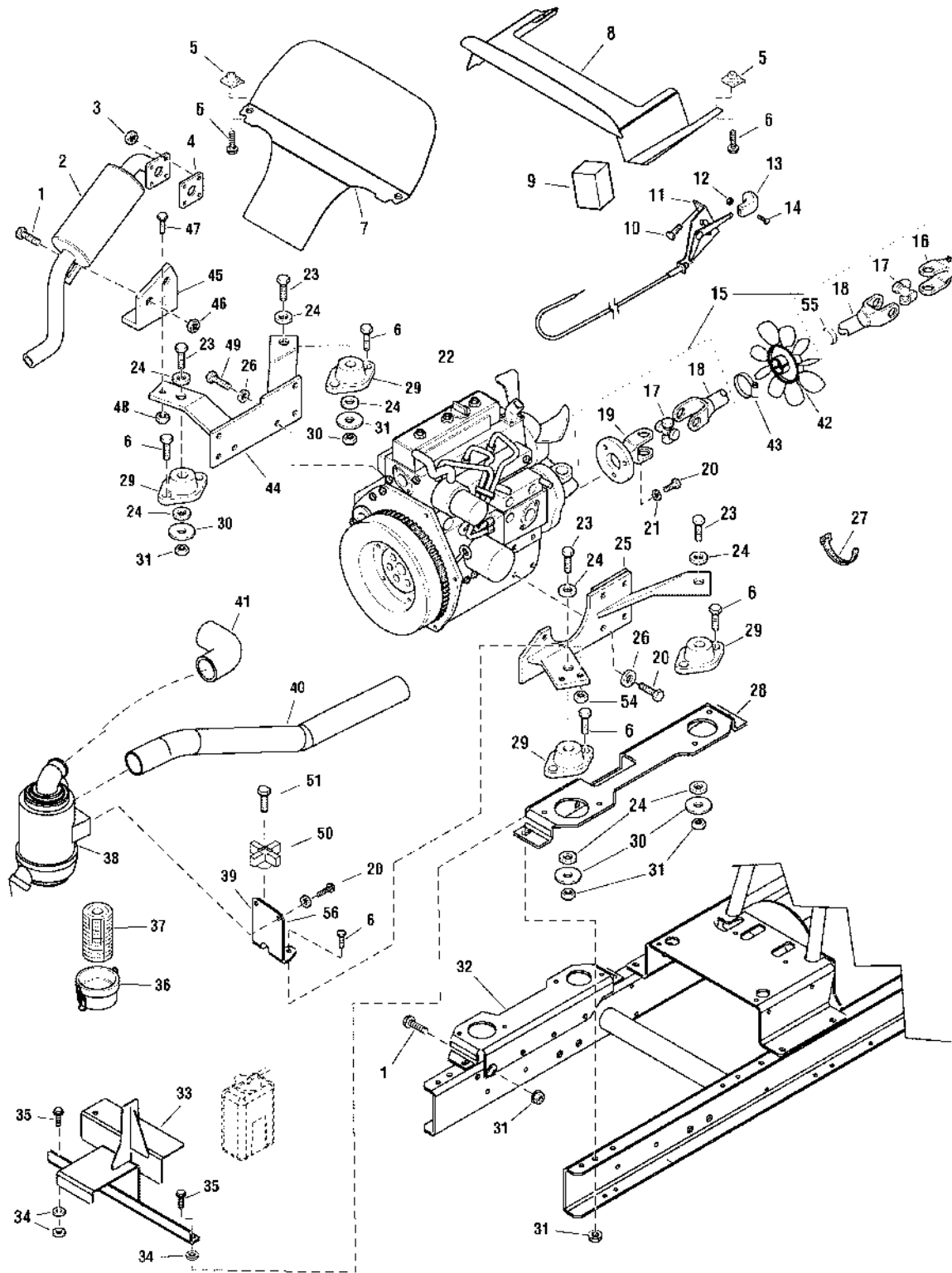
The above parts group applies to the following Mfg. Nos.:

1695229 - Legacy XL 2690663 - 2927
 1695232 - 2927 2690664 - 2927
 2690659 - Legacy XL 2690665 - 2027
 2690660 - Legacy XL 2690666 - 2027
 2690661 - Legacy XL
 2690662 - 2927

Engine Group - 27HP Briggs & Stratton Diesel Diagram 1

986320D1

NOTE: Unless noted otherwise,
use the standard hardware torque
specification chart.



The above parts group applies to the following Mfg. Nos.:

- | | |
|---------------------|----------------|
| 1695229 - Legacy XL | 2690663 - 2927 |
| 1695232 - 2927 | 2690664 - 2927 |
| 2690659 - Legacy XL | 2690665 - 2027 |
| 2690660 - Legacy XL | 2690666 - 2027 |
| 2690661 - Legacy XL | |
| 2690662 - 2927 | |

Engine Group - 27HP Briggs & Stratton Diesel Diagram 1

REF NO	PART NO.	QTY.	DESCRIPTION
45	1718639ASM	1	BRACKET, Muffler
46	1960687SM	4	NUT, Hex, Flange, 3/8-16, ESNA
47	1930591SM	4	SCREW, Hex, Whiz Lock, Flange 5/16-18 x 1-1/4
48	1960686SM	1	NUT, Hex, Flange, 5-16-18, ESNA
49	1950018SM	6	CAPSCREW, Hex Head
50	1670578SM	1	KNOB
51	1921677SM	1	CAPSCREW, Hex Head 5/16-18 x 1.500
52	1919326SM	1	WASHER, 11/32 x 3/4 x 1/16
53	1666697SM	2	SPACER
54	1917372SM	1	NUT, Hex, 5/16-18
55	17526600SM	1	TAPE, Double Sided Foam .88 x 4.71
56	1726932SM	1	DECAL, Air Cleaner

Not for
Reproduction

Footnotes

Note* Part number(s) not available at this time.

Note* Part number(s) not available at this time.

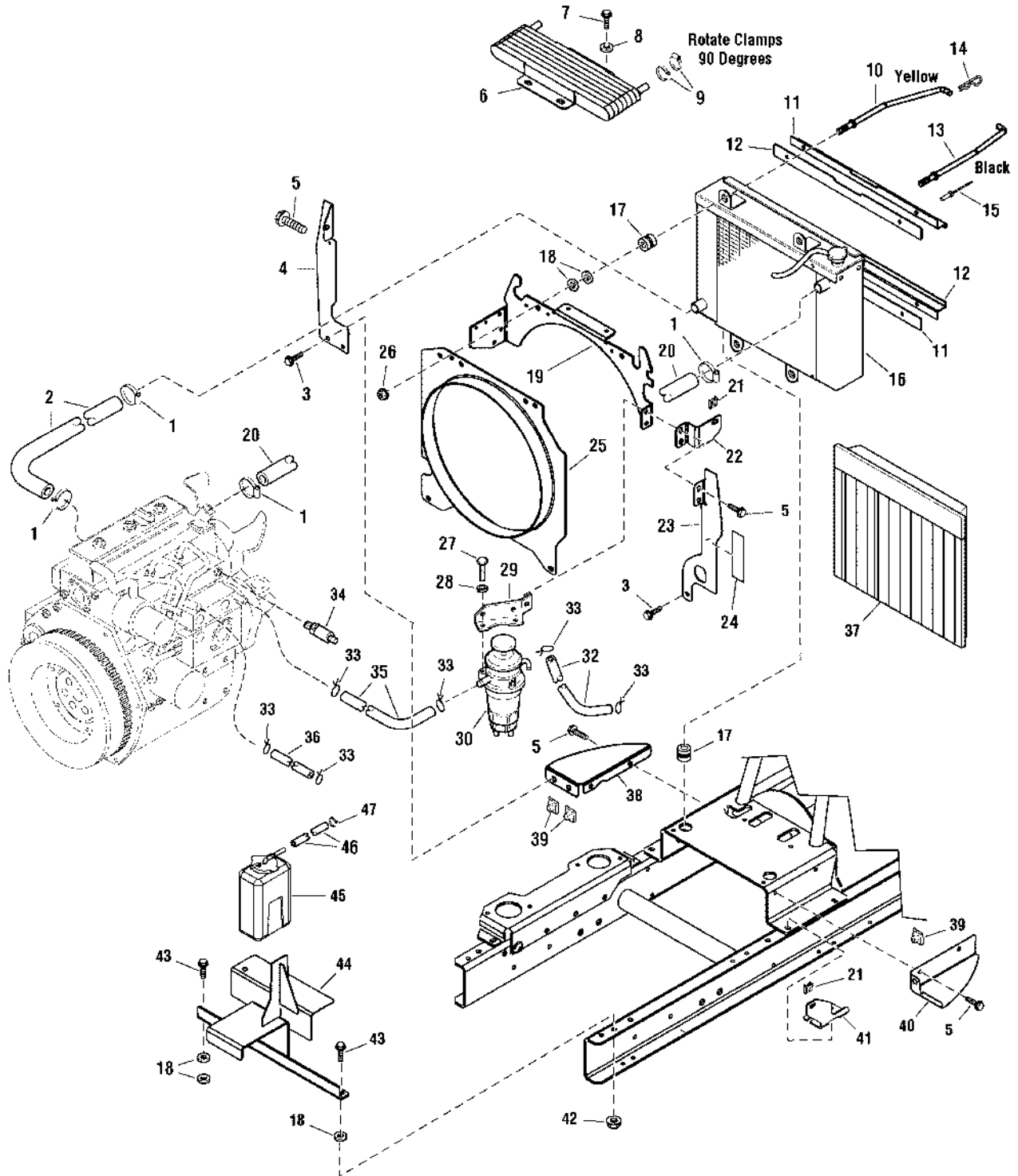
The above parts group applies to the following Mfg. Nos.:

1695229 - Legacy XL 2690663 - 2927
1695232 - 2927 2690664 - 2927
2690659 - Legacy XL 2690665 - 2027
2690660 - Legacy XL 2690666 - 2027
2690661 - Legacy XL
2690662 - 2927

Engine Group - 27HP Briggs & Stratton Diesel Diagram 2

986320D2

NOTE: Unless noted otherwise,
use the standard hardware torque
specification chart.



The above parts group applies to the following Mfg. Nos.:

- | | |
|---------------------|----------------|
| 1695229 - Legacy XL | 2690663 - 2927 |
| 1695232 - 2927 | 2690664 - 2927 |
| 2690659 - Legacy XL | 2690665 - 2027 |
| 2690660 - Legacy XL | 2690666 - 2027 |
| 2690661 - Legacy XL | |
| 2690662 - 2927 | |

Engine Group - 27HP Briggs & Stratton Diesel Diagram 2

REF NO	PART NO.	QTY.	DESCRIPTION
1	1725746SM	5	CLAMP, Hose, Worm
2	1718629SM	1	HOSE, Radiator
3	1930591SM	4	SCREW, Hex, Whiz Lock, Flange, 5/16-16 x 1-1/4
4	1725033ASM	1	SHIELD, R.H., 16GA
5	1664847SM	17	SCREW, Hex, Washer Head, Taptite, 5/16-18 x 3/4
6	1725559SM	1	COOLER ASSEMBLY, Oil
7	1925003SM	2	SCREW, Hex, Washer Head, Taptite, 1/4-20 x 1/2
8	1921319SM	2	WASHER, 1/4
9	2860266SM	4	CLAMP, Hose
10	1725098SM	1	ROD, Radiator, R.H.
11	1725363ASM	2	SLIDE, Offset, 14GA
12	1725362ASM	2	SLIDE, Screen Flat, 14GA
13	1725099SM	1	ROD, Radiator, L.H.
14	1722460SM	2	PIN, Quick
15	1675043SM	4	RIVET, Pop
16	1724906SM	1	RADIATOR
17	*	4	SPACER
18	1922755SM	7	WASHER, 3/4
19	1726813ASM	1	SUPPORT, Radiator Shroud, 10GA
20	1718630SM	1	HOSE, Radiator
21	1725711SM	2	CLIP, 1/4 Turn Push
22	1725430ASM	1	COVER, Bracket, Top, 12GA
23	1725034ASM	1	SHIELD, L.H., 16GA
24	1717596SM	1	DECAL, Clean Radiator
25	1725116SM	1	SHROUD, Radiator
26	1960687SM	4	NUT, Hex, Flange, 3/8-16 ESNA
27	1950018SM	2	CAPSCREW, Hex Head
28	1917356SM	6	LOCKWASHER, Spring, 5/16
29	1725589ASM	1	BRACKET, Fuel Filter
30	*	1	FUEL FILTER ASSEMBLY
31	*	1	FILTER, Fuel
32	1725749SM	1	HOSE, Fuel
33	2860112SM	6	CLAMP, Hose, Type E
34	1718663SM	1	SENDER, Temperature
35	1718645SM	1	HOSE, Fuel
36	1725749SM	1	HOSE, Fuel (Cut to 71.5)
37	1725623ASM	1	SCREEN, Corrugated, 20GA
38	1725026ASM	1	BAFFLE, R.H., 16GA
39	1935255SM	3	NUT, Speed, 5/16-18, Lug Type
40	1725422ASM	1	BAFFLE, L.H., 16GA
41	1725429ASM	1	COVER, Bracket, Bottom
42	1960680SM	17	NUT, Hex, KEPS, 3/8-16 Conical Washer
43	1928727SM	2	SCREW, Hex, Whiz Lock, Flange, 3/8-16 x 1-1/4
44	1725598ASM	1	HOLD DOWN ASSEMBLY, Battery

Footnotes

Note* Part number(s) not available at this time.

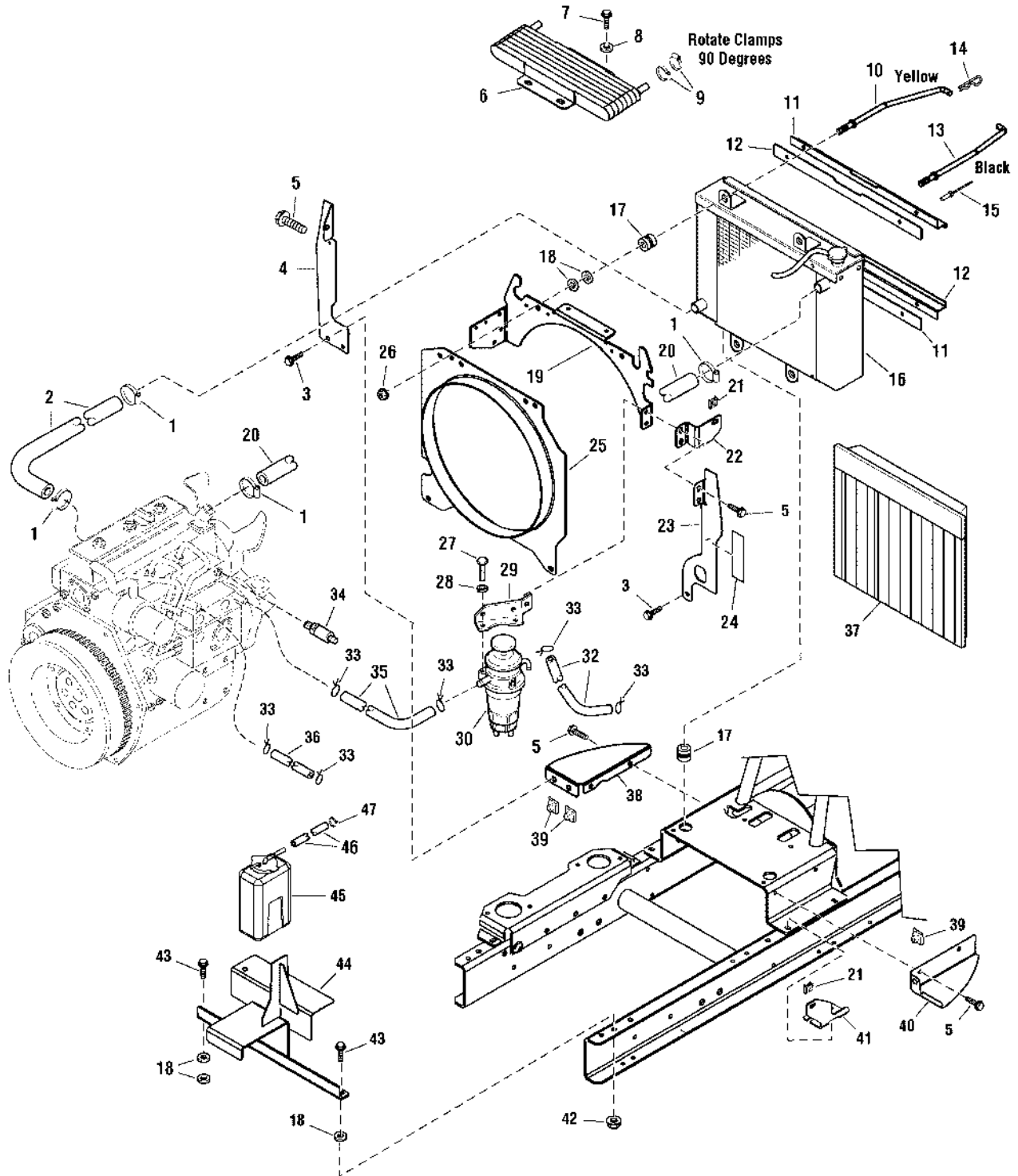
The above parts group applies to the following Mfg. Nos.:

1695229 - Legacy XL 2690663 - 2927
 1695232 - 2927 2690664 - 2927
 2690659 - Legacy XL 2690665 - 2027
 2690660 - Legacy XL 2690666 - 2027
 2690661 - Legacy XL
 2690662 - 2927

Engine Group - 27HP Briggs & Stratton Diesel Diagram 2

986320D2

NOTE: Unless noted otherwise,
use the standard hardware torque
specification chart.



The above parts group applies to the following Mfg. Nos.:

- | | |
|---------------------|----------------|
| 1695229 - Legacy XL | 2690663 - 2927 |
| 1695232 - 2927 | 2690664 - 2927 |
| 2690659 - Legacy XL | 2690665 - 2027 |
| 2690660 - Legacy XL | 2690666 - 2027 |
| 2690661 - Legacy XL | |
| 2690662 - 2927 | |

Engine Group - 27HP Briggs & Stratton Diesel Diagram 2

REF NO	PART NO.	QTY.	DESCRIPTION
45	*	1	RADIATOR, Overflow
46	*	1	HOSE, Radiator Overflow
47	1734500SM	1	CLAMP, Hose OETIKER 15/32

Not for
Reproduction

Footnotes

Note* Part number(s) not available at this time.

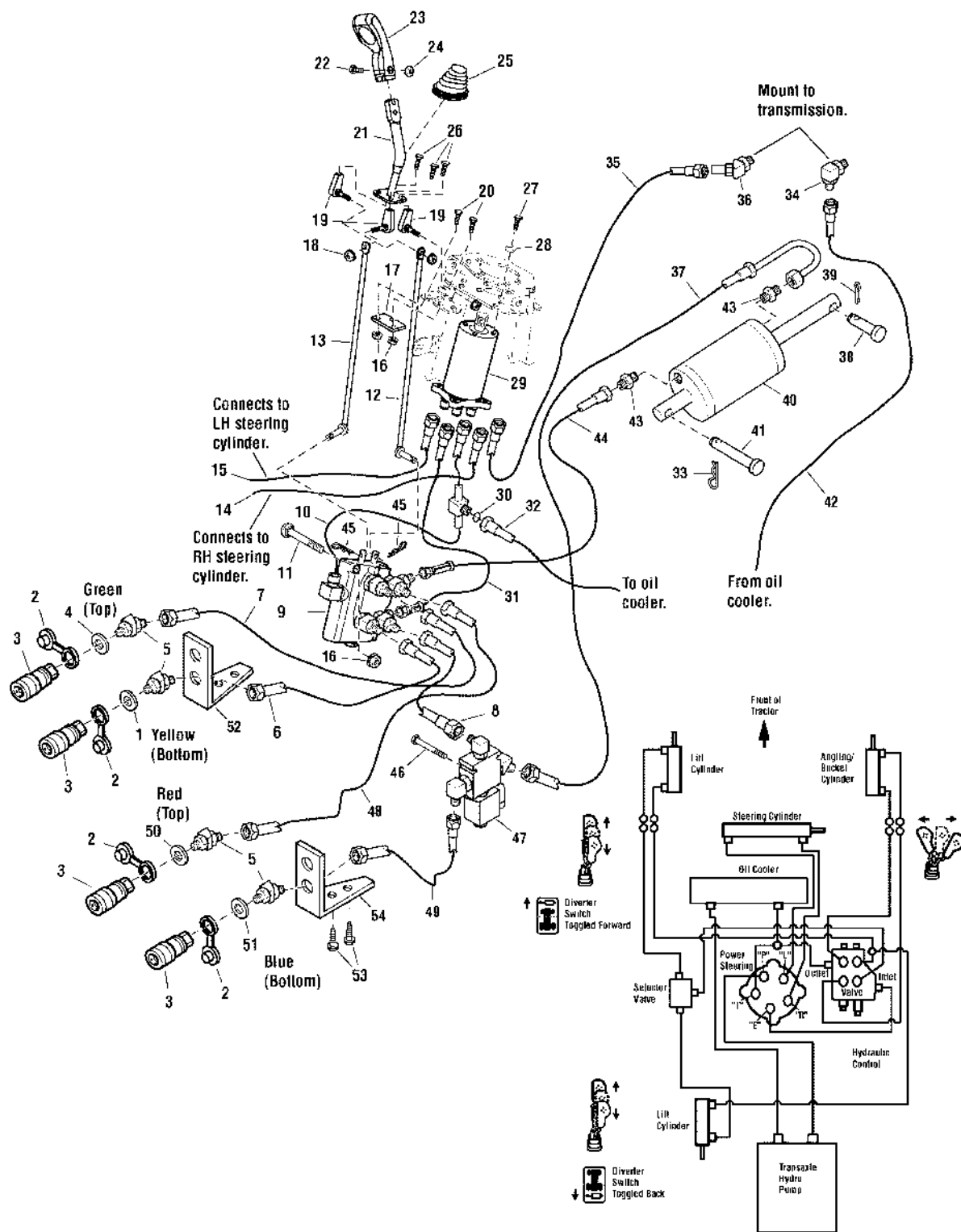
The above parts group applies to the following Mfg. Nos.:

1695229 - Legacy XL 2690663 - 2927
1695232 - 2927 2690664 - 2927
2690659 - Legacy XL 2690665 - 2027
2690660 - Legacy XL 2690666 - 2027
2690661 - Legacy XL
2690662 - 2927

Hydraulic Group

NOTE: Unless noted otherwise, use the standard hardware torque specification chart.

986315



The above parts group applies to the following Mfg. Nos.:

- | | |
|---------------------|----------------|
| 1695229 - Legacy XL | 2690663 - 2927 |
| 1695232 - 2927 | 2690664 - 2927 |
| 2690659 - Legacy XL | 2690665 - 2027 |
| 2690660 - Legacy XL | 2690666 - 2027 |
| 2690661 - Legacy XL | |
| 2690662 - 2927 | |

Hydraulic Group

REF NO	PART NO.	QTY.	DESCRIPTION
1	1726319SM	2	WASHER
2	2173360SM	4	PLUG, Plastic
3	2173358SM	4	BODY ASSEMBLY, Coupler 1/4-18 Int, 1.94 LG
4	1726321SM	2	WASHER
5	1725351SM	7	FITTING, Tube Elbow
6	1725687SM	1	TUBE, Hydraulic
7	1725686SM	1	TUBE, Hydraulic
8	1725688SM	1	TUBE, Hydraulic
9	1725080SM	1	VALVE ASSEMBLY, Control 2 Spool
10	1725690SM	1	TUBE, Hydraulic
11	1960700SM	2	CARRIAGE BOLT, 1/4-20 x 2 G5
12	1724434SM	1	ROD & PIN ASSEMBLY, Control
13	1724878SM	1	ROD & PIN ASSEMBLY, Control
14	1725012SM	1	HOSE ASSEMBLY, Hydraulics, R.H.
15	1724890SM	1	HOSE ASSEMBLY, Hydraulics, L.H.
16	1960685SM	4	NUT, Hex 1/4-20 Conical Washer
17	1724881SM	1	PAD, Hydraulic
18	2860697SM	3	NUT, Hex, Spiralock Flange 1/4-28
19	1725117SM	3	JOINT, Ball, 1/4-28 Int
20	1923341SM	2	CAPSCREW, Hex Head, 1/4-20 x 3/4 G5
21	1725100ASM	1	LEVER ASSEMBLY, Joystick
22	1960666SM	1	SCREW, TORX PLUS Socket Head, 1/4-20 x 7/8
23	1722303SM	1	HANDLE, Cruise 3/8 x 7/8 Slot
24	1920397SM	1	NUT, Hex, Lock, ESNA LIGHT, 1/4-20 NC-3B
25	1725120SM	1	BOOT, Hydraulic Control
26	2860696SM	3	SCREW, Hex SEMS Square Washer, 1/4-28 x 3/4
27	2860444SM	4	CAPSCREW, Hex Head
28	1916964SM	4	LOCKWASHER, Spring
29	1725288SM	1	POWER STEERING UNIT
30	1725485SM	1	O-RING
31	1724886SM	1	TUBE, Hydraulic
32	1725604SM	1	HOSE ASSEMBLY, Hydraulic Rubber, 29 LG, 1 Swivel
33	1960033SM	1	CLIP, Hair Pin
34	1725655SM	1	FITTING, Tube Elbow 9/16-18 13/16-16, 90 Degrees
35	1729590SM	1	TUBE, Assembly Hydraulic
36	1729591SM	1	FITTING, Tube Elbow, 9/16-18 11/16-16, 90 Degrees
37	1725111SM	1	HOSE ASSEMBLY, Hydraulic Rubber, 180 Degrees
38	1729275SM	1	PIN, Round Head Drilled, 1/2 x 2-1/2
39	1918452SM	1	PIN, Cotter, 1/4 x 1
40	1726442SM	1	CYLINDER ASSEMBLY, Hydraulic
41	1725223SM	1	PIN, Clevis
42	1725691SM	1	HOSE, Hydraulic
43	2819171SM	2	TUBE, Fitting Mail 1/8 NPT+7/16-20 .250TU
44	1725110SM	1	HOSE ASSEMBLY, Hydraulic Rubber, 13.7 LG, 30 Degrees

Footnotes

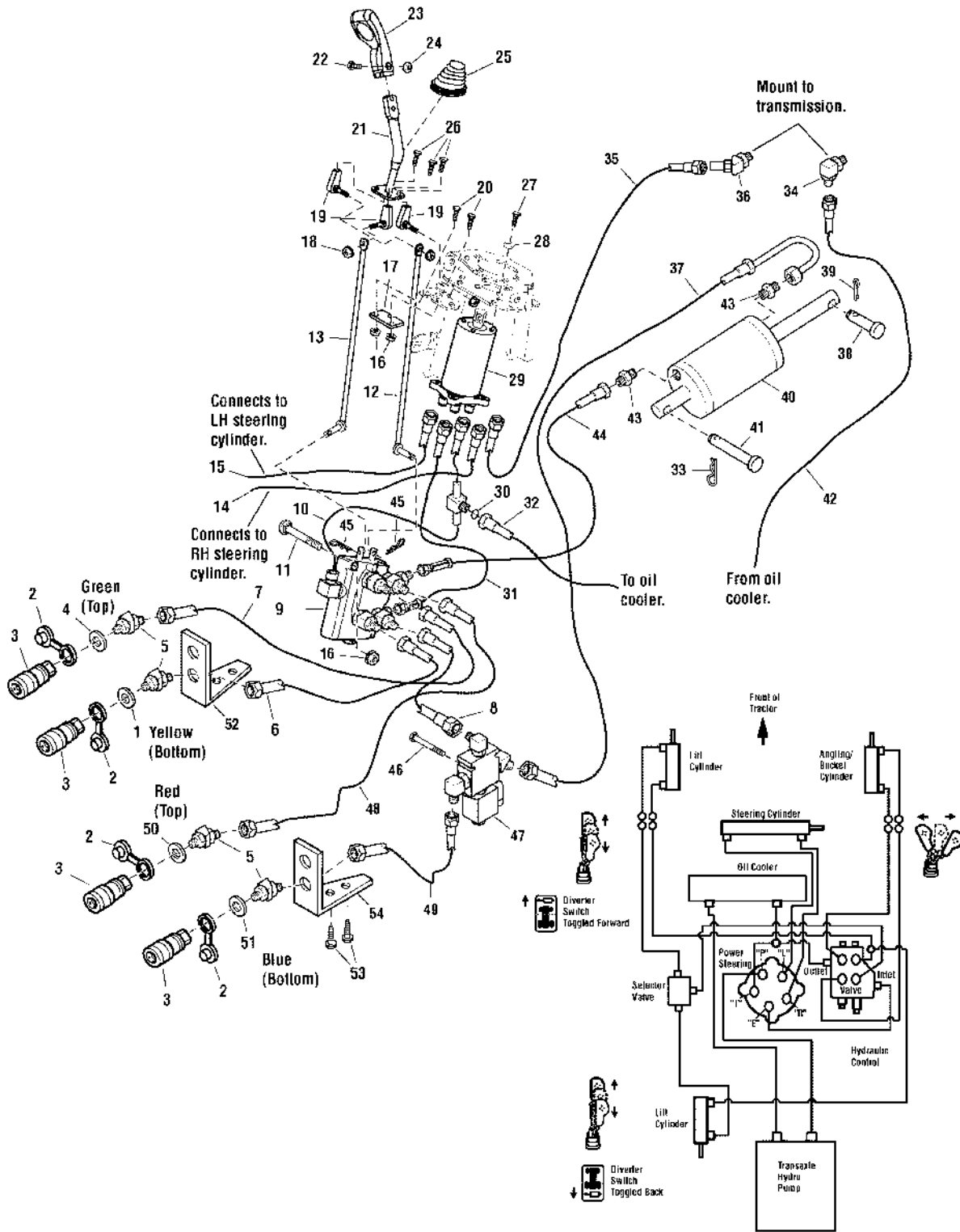
The above parts group applies to the following Mfg. Nos.:

1695229 - Legacy XL 2690663 - 2927
 1695232 - 2927 2690664 - 2927
 2690659 - Legacy XL 2690665 - 2027
 2690660 - Legacy XL 2690666 - 2027
 2690661 - Legacy XL
 2690662 - 2927

Hydraulic Group

986315

NOTE: Unless noted otherwise, use the standard hardware torque specification chart.



The above parts group applies to the following Mfg. Nos.:

- | | |
|---------------------|----------------|
| 1695229 - Legacy XL | 2690663 - 2927 |
| 1695232 - 2927 | 2690664 - 2927 |
| 2690659 - Legacy XL | 2690665 - 2027 |
| 2690660 - Legacy XL | 2690666 - 2027 |
| 2690661 - Legacy XL | |
| 2690662 - 2927 | |

Hydraulic Group

REF NO	PART NO.	QTY.	DESCRIPTION
45	1960221SM	2	CLIP, Hair Pin
46	1960571SM	2	SCREW, Hex, Washer Head Taptite, 1/4-20 x 1-3/4
47	1724857SM	1	VALVE ASSEMBLY, Selector
48	1725684SM	1	TUBE, Hydraulic
49	1725685SM	1	TUBE, Hydraulic
50	1726320SM	2	WASHER
51	1726318SM	2	WASHER
52	1725325ASM	1	SUPPORT, Quick Disc R.H.
53	1930594SM	4	SCREW, Hex Lock Flange 1/4-20 x 3/4
54	1725323ASM	1	SUPPORT, Quick Disc L.H.

Not for
Reproduction

Footnotes

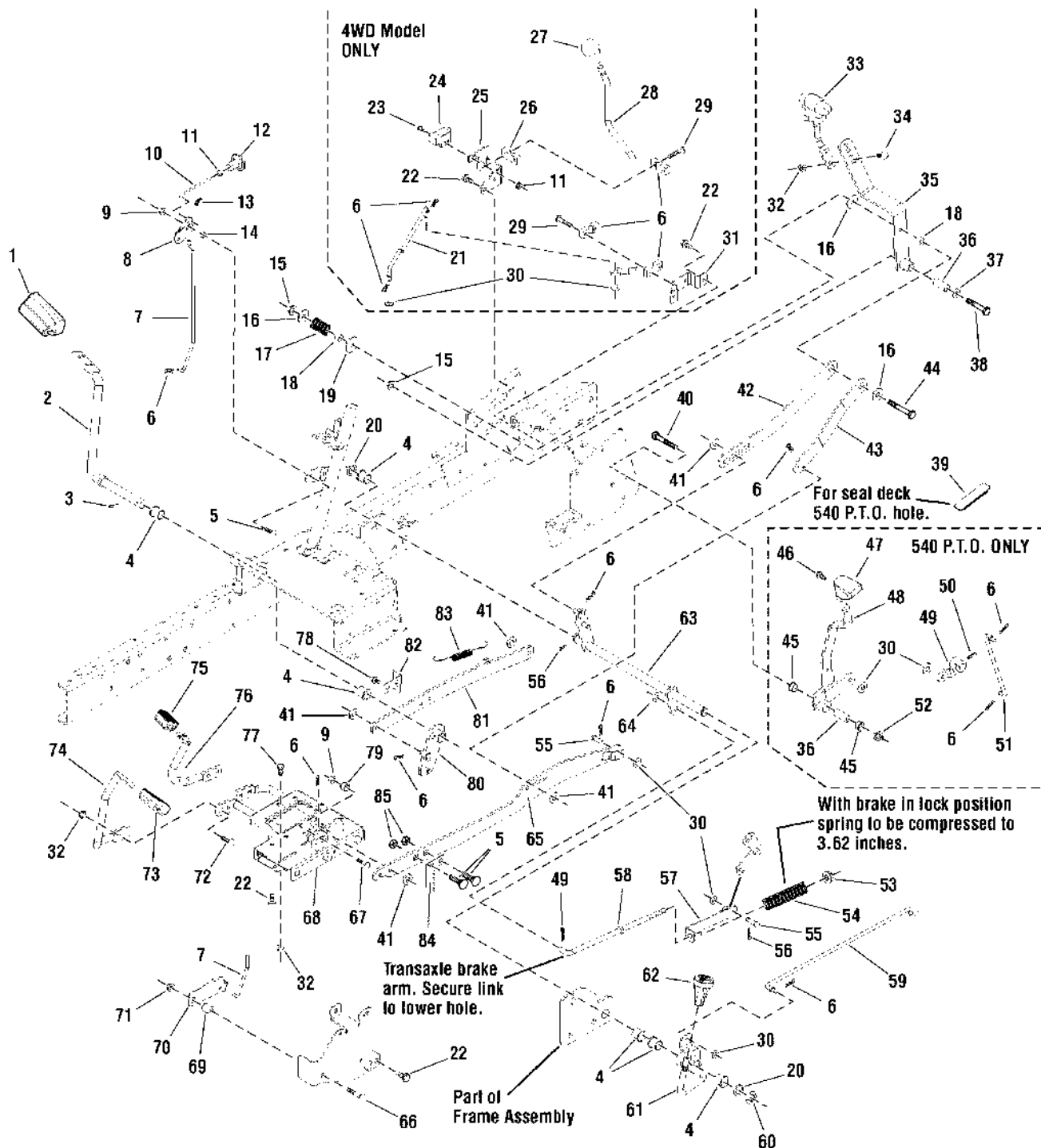
The above parts group applies to the following Mfg. Nos.:

1695229 - Legacy XL 2690663 - 2927
1695232 - 2927 2690664 - 2927
2690659 - Legacy XL 2690665 - 2027
2690660 - Legacy XL 2690666 - 2027
2690661 - Legacy XL
2690662 - 2927

Controls Group

986571

NOTE: Unless noted otherwise, use the standard hardware torque specification chart.



The above parts group applies to the following Mfg. Nos.:

- | | |
|---------------------|----------------|
| 1695229 - Legacy XL | 2690663 - 2927 |
| 1695232 - 2927 | 2690664 - 2927 |
| 2690659 - Legacy XL | 2690665 - 2027 |
| 2690660 - Legacy XL | 2690666 - 2027 |
| 2690661 - Legacy XL | |
| 2690662 - 2927 | |

Controls Group

REF NO	PART NO.	QTY.	DESCRIPTION
1	1721577SM	1	PAD, Brake Pedal
2	1724676SM	1	ROD, Brake Pedal
3	2860396SM	1	PIN, Spring
4	2176440SM	6	BUSHING
5	1931317SM	3	CARRIAGE BOLT, 1/4-20 x 3/4 G5
6	1722460SM	7/9/1	PIN, Quick
7	1725276SM	1	ROD, 4 Bends, 13.63 LG
8	1717006SM	1	BRACKET, Parking Brake Pivot
9	1960685SM	2	NUT, Hex, KEPS, 1/4-20 Conical Washer
10	1717004SM	1	ROD, 10-24 x 31/50, 3.91 LG
11	1960591SM	1/3	NUT, Hex, KEPS, #10-24
12	1725277SM	1	KNOB, Interior Thread, Parking
13	1725550SM	1	CLIP, Rod End Linkage, L.H., For .188 Rod
14	1960234SM	1	SPACER, .320 LG
15	1960687SM	2	NUT, Hex, Flange, 3/8-16, ESNA
16	1922611SM	3	WASHER, 3/4
17	1677746SM	1	SPRING, Complete
18	1713791SM	2	SPACER, 7/16 LG Powdered Metal
19	1924356SM	1	WASHER, 3/8
20	1960114SM	2	WASHER, 3/4
21	1724850SM	1	ROD, 4WD Shift, 10.74 LG
22	1664847SM	2/6	SCREW, Hex, Washer Head, Taptite, 5/16-18 x 3/4
23	1933737SM	2	SCREW, Hex Washer Head, Slot #10-24 x 5/8
24	1717050SM	1	SWITCH, Push Button, Neutral/Start
25	1724866ASM	1	BRACKET, 2 Speed Pivot
26	1674631SM	4	BEARING HALF, Outer Nylon
27	1713843SM	1	KNOB, Sphere Softer
28	1724902SM	1	ROD, Shift 2 Speed, 19-1/4 LG
29	1930600SM	4	SCREW, Hex, Washer Head, Taptite, 5/16-18 x 1-1/2
30	1919326SM	3/5/7	WASHER
31	1716994ASM	1	BRACKET, Mounting, 4.63 LG
32	1960684SM	7	NUT, Hex, KEPS 5/16-18, Conical Washer
33	1725357SM	1	KNOB, With Cruise Control Rod Molded In
34	1931335SM	2	CARRIAGE BOLT, 5/16-18 x 1 G5
35	1724669ASM	1	LEVER ASSEMBLY, Cruise
36	1669105SM	1/2	SPACER, 1-1/2 LG
37	1924940SM	1	WASHER, 3/8
38	1922130SM	1	CAPSCREW, Hex Head, 3/8-16 x 2-1/4 G5
39	1725299SM	1	COVER, Black Rubber, .98 x 3.88
40	1960615SM	1	CARRIAGE BOLT, 3/8-16 x 2-1/2
41	1922755SM	5	WASHER, 3/4
42	1724686ASM	1	ARM, Cruise Return
43	1724913SM	1	LINK & PIN ASSEMBLY, Cruise
44	1921973SM	1	CAPSCREW, Hex Head 3/8-16 x 2-3/4 G5

Footnotes

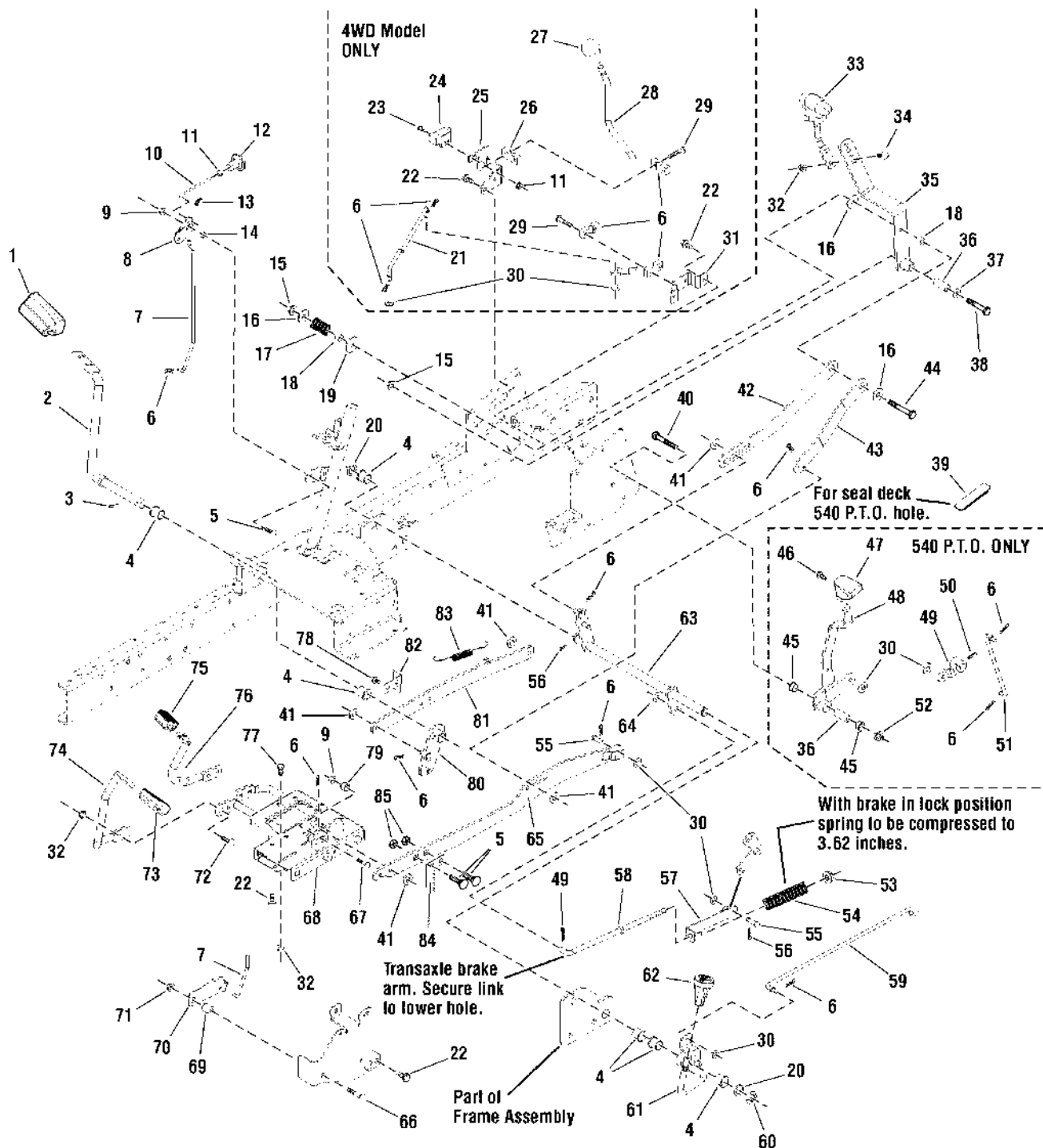
The above parts group applies to the following Mfg. Nos.:

1695229 - Legacy XL 2690663 - 2927
 1695232 - 2927 2690664 - 2927
 2690659 - Legacy XL 2690665 - 2027
 2690660 - Legacy XL 2690666 - 2027
 2690661 - Legacy XL
 2690662 - 2927

Controls Group

986571

NOTE: Unless noted otherwise, use the standard hardware torque specification chart.



The above parts group applies to the following Mfg. Nos.:

- | | |
|---------------------|----------------|
| 1695229 - Legacy XL | 2690663 - 2927 |
| 1695232 - 2927 | 2690664 - 2927 |
| 2690659 - Legacy XL | 2690665 - 2027 |
| 2690660 - Legacy XL | 2690666 - 2027 |
| 2690661 - Legacy XL | |
| 2690662 - 2927 | |

Controls Group

REF NO	PART NO.	QTY.	DESCRIPTION
45	1676148SM	2	BUSHING, 2/5 LG Powdered Metal
46	1960106SM	1	SCREW, Hex, Washer Head, PLASTITE 1/4 x 1
47	1726043SM	1	HANDLE, 540 PTO 3/8 x 7/8 Slot
48	1724225ASM	1	HANDLE ASSEMBLY, Control
49	1724216SM	1	ARM & HUB ASSEMBLY, Control
50	1725010SM	1	PIN, Spring
51	1724229SM	1	ROD, Control, 9.23 LG
52	1960680SM	1	NUT, Hex, KEPS 3/8-16 Conical Washer
53	1960692SM	1	NUT, Hex, Toplock Flange 7/16-20
54	1725278SM	1	SPRING, Complete
55	1725011SM	2	PIN, Clevis
56	1918447SM	3	PIN, Cotter .094 X 3/4
57	1724783ASM	1	LINK & BRACE ASSEMBLY, Brake
58	1724200SM	1	ROD
59	1724858SM	1	ROD, Diff Lock, 20.7 LG
60	1611710SM	2	RING, Klipping Extension, 3/4 Shaft
61	1724859SM	1	PEDAL ASSEMBLY, Diff Lock
62	1716289SM	1	KNOB, Hole
63	1724672SM	1	SHAFT ASSEMBLY, Brake
64	1925125SM	1	WASHER, 7/16
65	1726765ASM	1	ARM ASSEMBLY, Control
66	1931337SM	1	CARRIAGE BOLT, 5/16-18 x 1-1/2 G5
67	1931320SM	1	CARRIAGE BOLT, 1/4-20 x 1-1/4 G5
68	1726766SM	1	CONTROL ASSEMBLY, Foot Pedals
69	1702552SM	1	SPACER
70	1725275SM	1	ARM, Brake Lock
71	1960686SM	1	NUT, Hex Flange, 5/16-18, ESNA
72	1931334SM	4	CARRIAGE BOLT, 5/16-18 x 7.8 G5
73	1721675SM	1	PAD, Foot Pedal, Forward
74	1724266ASM	1	PEDAL, Foot, Forward
75	1721674SM	1	PAD, Foot Pedal, Reverse
76	1722071ASM	1	PEDAL, Reverse
77	1921332SM	1	CAPSCREW, Hex Head, 5/16-18 x 3/4 G5
78	1924856SM	2	SCREW, Hex Washer Head, Taptite, 5/16-18 x 1/2
79	1686612SM	1	CAM, Roller
80	1724679ASM	1	ARM ASSEMBLY, Brake
81	1724846ASM	1	LINK, Brake
82	1724844SM	1	ACTUATOR, Switch 20GA
83	1721995SM	1	SPRING, Extension
84	1727215ASM	1	ACTUATOR, Switch 20GA
85	1920397SM	2/3	NUT, Hex Nylon, 1/4 -20

Footnotes

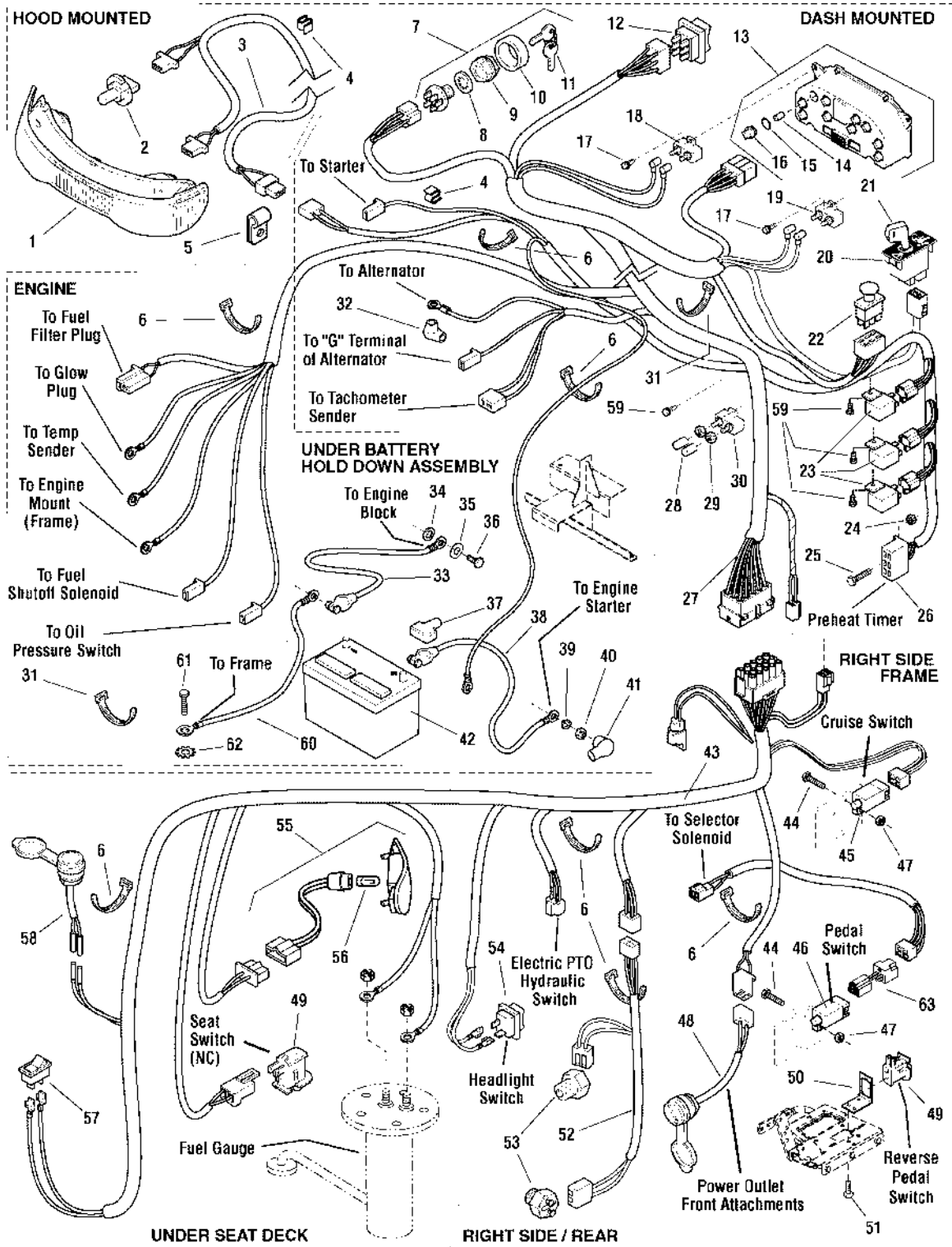
The above parts group applies to the following Mfg. Nos.:

1695229 - Legacy XL 2690663 - 2927
 1695232 - 2927 2690664 - 2927
 2690659 - Legacy XL 2690665 - 2027
 2690660 - Legacy XL 2690666 - 2027
 2690661 - Legacy XL
 2690662 - 2927

Electrical Group - 27HP Briggs & Stratton Diesel

NOTE: Unless noted otherwise, use the standard hardware torque specification chart.

986597a



The above parts group applies to the following Mfg. Nos.:

- | | |
|---------------------|----------------|
| 1695229 - Legacy XL | 2690663 - 2927 |
| 1695232 - 2927 | 2690664 - 2927 |
| 2690659 - Legacy XL | 2690665 - 2027 |
| 2690660 - Legacy XL | 2690666 - 2027 |
| 2690661 - Legacy XL | |
| 2690662 - 2927 | |

Electrical Group - 27HP Briggs & Stratton Diesel

REF NO	PART NO.	QTY.	DESCRIPTION
1	1715923SM	1	HEADLIGHT
2	1717649SM	2	BULB, Headlight, Halogen
3	1726997SM	1	HARNESS, Headlight
4	2172434SM	1	CLIP, Wire
5	1708007SM	1	CLAMP, Wire 3/8 Diameter
6	1701011SM	12	TIE, Self Locking 7 in. Long
7	1686734SM	1	SWITCH ASSEMBLY, Ignition 5/8-32, 6 Pin INDAK
8	1960547SM	1	LOCKWASHER, Internal Tooth, 5/8, Thin
9	1717549SM	1	NUT, Hex Flange 5/8-32 Ignition Switch
10	1717550SM	1	COVER, Ignition Switch, Black
11	1717163SM	1	KEYS, Set of 2
12	1716329SM	1	SWITCH, Electric Lift, 6 Terminal
13	1724967SM	1	PANEL, Instrument (Includes Ref. Nos. 14, 15 & 16)
14	1717634SM	10	BULB, Instrument Panel
15	1729948SM	10	SEAL, Lamp Socket Plug
16	1722061SM	10	HOLDER, Bulb, Instrument Panel (Includes Ref. No. 15)
17	1960578SM	4	SCREW, Hex Washer Head, Thread Cutting, #12-24 x 5/8
18	1725534SM	1	BREAKER, Circuit 12VOLT 10AMP
19	1665238SM	1	BREAKER, Circuit 12VOLT 20AMP with Tab
20	1726556SM	1	SWITCH, RMO Module Only
21	1726557SM	1	KEY, RMO Module, Plastic
22	1722887SM	1	SWITCH, PTO Push/Pull, Yellow
23	1726829SM	2	RELAY, 12VOLT 5 Blade
24	1933896SM	1	NUT, Hex Lock 10-24 with Nylock Insert, NC3B
25	1960589SM	1	SCREW, Round Head Phillips #10-24 x 3/4
26	1726829SM	1	RELAY, Glow Plug
27	1726776SM	1	HARNESS, Main Diesel
28	1719680SM	2	COVER, Wire, Black, Vinyl
29	1928919SM	2	NUT, Hex & Washer Assembly, KEPS
30	1719311SM	1	BREAKER, Circuit 30AMP 12VOLT
31	1701011SM	3	TIE, Self Locking 15 in. Long
32	2122023SM	1	COVER, Terminal Red
33	1725263SM	1	CABLE, Battery, # 4 x 10 in Long, Black
34	2820426SM	1	LOCKWASHER, External Tooth 5/16
35	1918266SM	1	WASHER, 3/8
36	2850017SM	1	CAPSCREW, Hex Head M08-1.25 x 16MM
37	1713534SM	1	INSULATOR, Battery Terminal, Red
38	1725262SM	1	CABLE, Battery, # 4 x 15 in Long, Red
39	1917356SM	1	LOCKWASHER, Spring 5/16
40	2860433SM	1	NUT, Hex Flange M08-1.25
41	1724588SM	1	BOOT, Cable Terminal
42	1686714SM	1	BATTERY, 12 Volt 6 Cell, 500 CCA
43	1727679SM	1	HARNESS, Rear
44	1933737SM	4	SCREW, Hew Washer Head Slot, #10-24 x 5/8

Footnotes

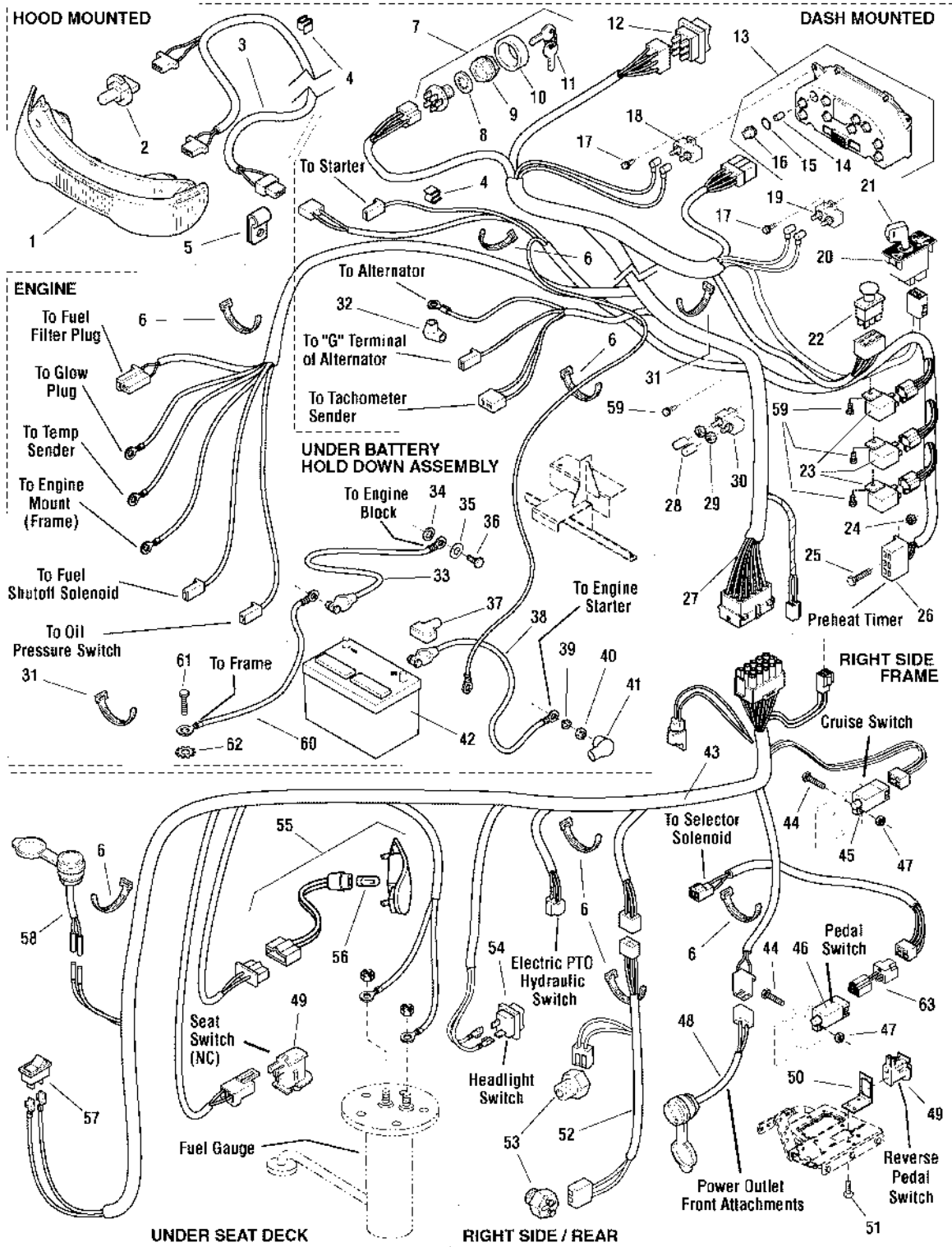
The above parts group applies to the following Mfg. Nos.:

1695229 - Legacy XL 2690663 - 2927
 1695232 - 2927 2690664 - 2927
 2690659 - Legacy XL 2690665 - 2027
 2690660 - Legacy XL 2690666 - 2027
 2690661 - Legacy XL
 2690662 - 2927

Electrical Group - 27HP Briggs & Stratton Diesel

NOTE: Unless noted otherwise, use the standard hardware torque specification chart.

986597a



The above parts group applies to the following Mfg. Nos.:

- | | |
|---------------------|----------------|
| 1695229 - Legacy XL | 2690663 - 2927 |
| 1695232 - 2927 | 2690664 - 2927 |
| 2690659 - Legacy XL | 2690665 - 2027 |
| 2690660 - Legacy XL | 2690666 - 2027 |
| 2690661 - Legacy XL | |
| 2690662 - 2927 | |

Electrical Group - 27HP Briggs & Stratton Diesel

REF NO	PART NO.	QTY.	DESCRIPTION
45	1717050SM	1	SWITCH, Push Button, Cruise Control
46	1701521SM	1	SWITCH, Push Button, Foot Pedal
47	1960591SM	4	NUT, Hex KEPS #10-24
48	1716987SM	1	HARNESS ASSEMBLY, Power Outlet
49	1732004SM	1	SWITCH, Push Button (No) Regent
50	1726810ASM	1	BRACKET, Switch Mounting, Reverse Pedal
51	1929000SM	3	CAPSCREW, Hex Head Taptite, 1/4-20 x 3/8
52	1724963SM	1	HARNESS, Transmission, PTO Lights (540 PTO Only)
53	1654634SM	2	SWITCH, Interlock Ball Check 5/16 (540 PTO Only)
54	1716951SM	1	SWITCH, Headlights, 2 Terminal
55	1715915SM	2	TAIL LIGHT ASSEMBLY
56	1717650SM	2	BULB, Tail Light
57	1725212SM	1	SWITCH, Rocker, Solenoid Select
58	1725302SM	1	POWER OUTLET, 12VOLT with Dust Cap
59	1704351SM	3	FASTENER, Panel
60	1733112SM	1	CABLE, 6 X 15 LG (2) Ring Terminals, Black
61	2827187SM	1	SCREW, Hex Washer HD, TAPTT 3/8-16 x 1
62	2820427SM	1	LOCKWASER, External Tooth, 3/8, Yellow
63	1734133SM	1	WIRING ASSEMBLY, All Conditions Shutdown (CE/Export)

Not for
Reproduction

Footnotes

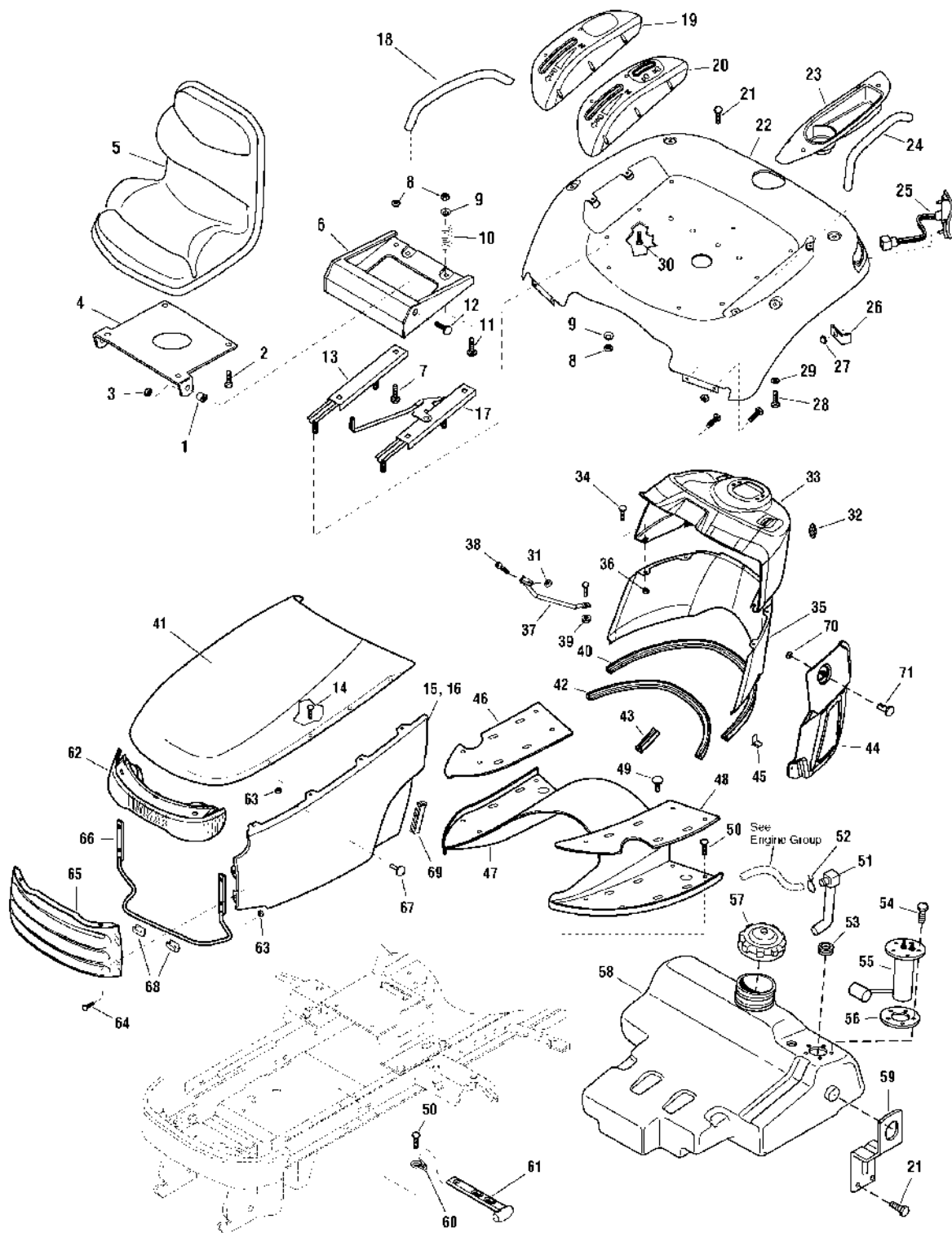
The above parts group applies to the following Mfg. Nos.:

1695229 - Legacy XL 2690663 - 2927
1695232 - 2927 2690664 - 2927
2690659 - Legacy XL 2690665 - 2027
2690660 - Legacy XL 2690666 - 2027
2690661 - Legacy XL
2690662 - 2927

Body Group

986577

NOTE: Unless noted otherwise,
use the standard hardware torque
specification chart.



The above parts group applies to the following Mfg. Nos.:

1695229 - Legacy XL	2690663 - 2927
1695232 - 2927	2690664 - 2927
2690659 - Legacy XL	2690665 - 2027
2690660 - Legacy XL	2690666 - 2027
2690661 - Legacy XL	
2690662 - 2927	

Body Group

REF NO	PART NO.	QTY.	DESCRIPTION
1	1663752SM	2	SPACER
2	1960667SM	9	SCREW, Hex, Flange Whiz Lock, Dog Point, 5/16-18 x 1
3	1960687SM	2	NUT, Hex, Flange ESNA Lock, Black 3/8-16
4	1723707ASM	1	PAN, Seat
5	1725300SM	1	SEAT, Black
6	1716977ASM	1	SUPPORT, Seat Lower
7	1931333SM	4	CARRIAGE BOLT, Black, 5/16-18 x 3/4
8	1960686SM	6	NUT, Nut, Flange Lock, ESNA, 5/16-18
9	1709256SM	6	LOCKWASHER, Black
10	1717051SM	2	SPRING, Seat
11	1931335SM	2	CARRIAGE BOLT, Black, 5/16-18 x 1
12	1931350SM	2	CARRIAGE BOLT, Black, 3/8-16 x 1
13	1717009SM	1	SLIDE, Seat
14	1960295SM	8	CAPSCREW, Hex, Head, 1/4-20x 5/8
15	1725822DSM	1	PANEL, Side RH
15	1725822CSM	1	PANEL, Side RH, Legacy XL
16	1725821DSM	1	PANEL, Side LH
16	1725821CSM	1	PANEL, Side LH, Legacy XL
17	1717068SM	1	SLIDE, Seat, LH
18	1716336SM	1	HANDLE, Grab, RH, Black
19	1687053SM	1	POD, Legacy XL, 2WD
20	1687052SM	1	POD, Legacy XL, 4WD
21	1664847SM	6	CAPSCREW, Hex, Washer Head, Taptite, Black, 5/16-18 x 3/4
22	1724581CSM	1	DECK, Seat, Legacy XL
22	1724581DSM	1	DECK, Seat
23	1725290SM	1	POD, Legacy XL, LH
24	1716335SM	1	HANDLE, Grab, LH, Black
25	1715915SM	2	TAIL LIGHT ASSEMBLY
26	1718048SM	4	CLIP, "L"
27	1933988SM	4	NUT, Push, Black, 5/16
28	1925205SM	4	CAPSCREW, Hex Head, Black, 5/16-18 x 5/8
29	1960044SM	4	WASHER, Black, 5/16
30	1960578SM	10	CAPSCREW, Hex Washer Head, #12-24 x 5/8
31	1933896SM	1	NUT, Nylock, # 10-24
32	1718611SM	1	PLUG, Dashboard, Diesel
33	1724584SM	1	DASH, Upper, Black, Diesel
33	1724171SM	1	DASH, Upper, Black, Gas
34	1960252SM	4	CARRIAGEBOLT, Black, 1/4-20 x 5/8
35	1725032ASM	1	DASH, Lower, Black, Diesel
35	1725031ASM	1	DASH, Lower, Black, Gas
36	1960685SM	4	NUT, Hex, KEPS, Black, 1/4-20
37	1724869SM	1	ROD, Dash Support
38	1960393SM	1	SCREW, Phillips, Pan Head, Black, #10-24 x 1
39	1960684SM	9	NUT, Hex, Keps, Black, 5/16-18

Footnotes

Note* Part number(s) not available at this time.

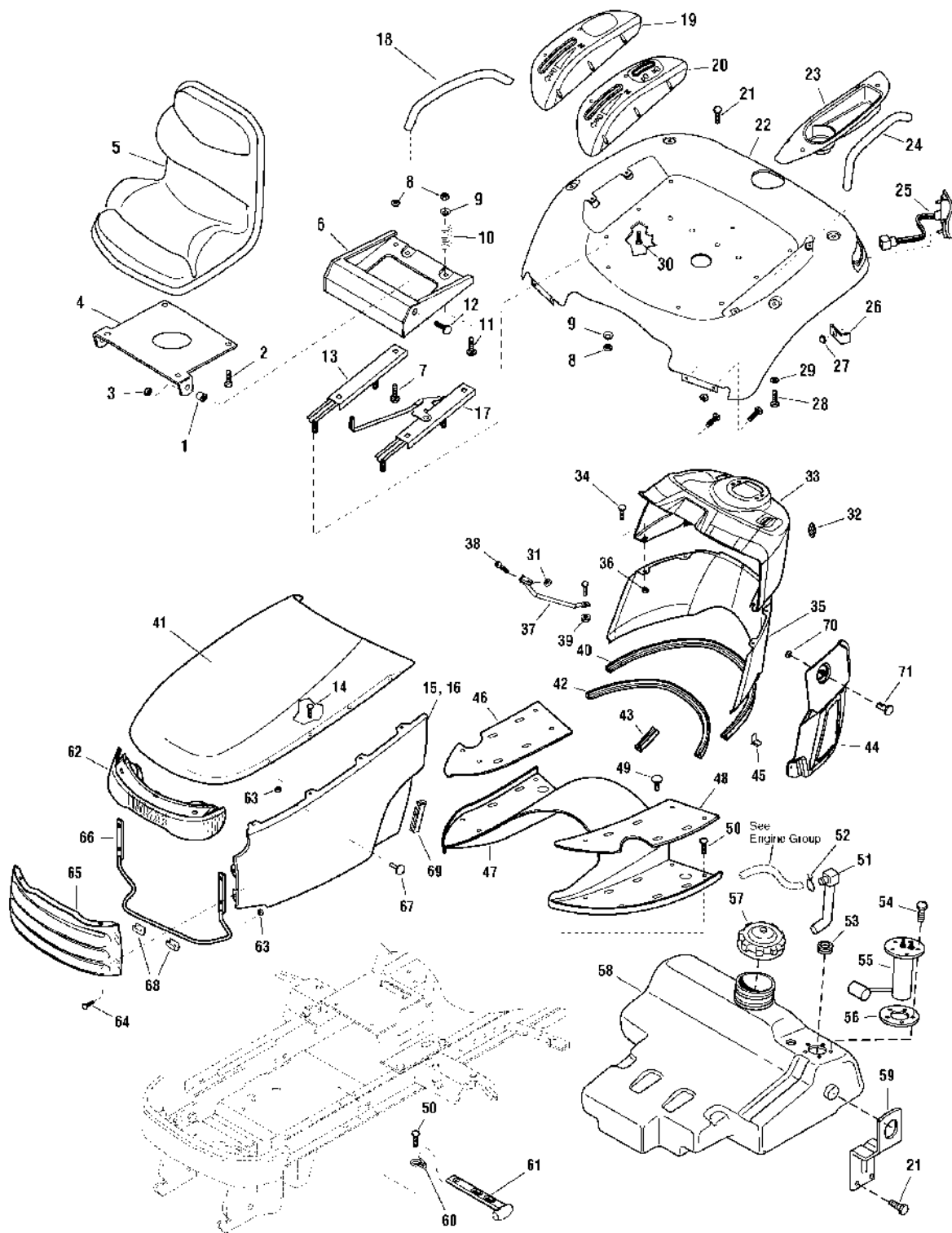
The above parts group applies to the following Mfg. Nos.:

1695229 - Legacy XL 2690663 - 2927
 1695232 - 2927 2690664 - 2927
 2690659 - Legacy XL 2690665 - 2027
 2690660 - Legacy XL 2690666 - 2027
 2690661 - Legacy XL
 2690662 - 2927

Body Group

986577

NOTE: Unless noted otherwise,
use the standard hardware torque
specification chart.



The above parts group applies to the following Mfg. Nos.:

- 1695229 - Legacy XL 2690663 - 2927
- 1695232 - 2927 2690664 - 2927
- 2690659 - Legacy XL 2690665 - 2027
- 2690660 - Legacy XL 2690666 - 2027
- 2690661 - Legacy XL
- 2690662 - 2927

Body Group

REF NO	PART NO.	QTY.	DESCRIPTION
40	1725652SM	1	EDGING, Rubber, Black, 31" Long
41	1725658CSM	1	HOOD & SCREEN ASSEMBLY
41	1725658DSM	1	HOOD & SCREEN ASSEMBLY
42	1725654SM	1	EDGING, Rubber, Black, 23" Long
43	1725653SM	1	EDGING, Rubber, Black, 2-5/8" Long
44	1725775SM	1	COVER ASSEMBLY, Dash, Black (Diesel Only)
45	1717523SM	1	CLIP, "U"
47	1724268DSM	1	TUNNEL
46	1724580SM	1	PAD, Footrest, RH
47	1724268CSM	1	TUNNEL, Legacy XL
48	1724579SM	1	PAD, Footrest, LH
49	1704351SM	19	FASTENER, Panel
50	1925003SM	7	CAPSCREW, Hex, Washer Head, Taptite, Black, 1/4-20 x 1/2
51	1717076SM	2	ELBOW & TUBE ASSEMBLY
52	*	1	CLIP
53	1654930SM	2	BUSHING
54	2860665SM	5	SCREW, Pan Head, Torx, SEMS, #10-32 x 1/2
55	1725301SM	1	SENDER, Fuel
56	1685303SM	1	GASKET
57	1718633SM	1	CAP, Fuel, Diesel
57	1715917SM	1	CAP, Fuel, Gas
58	1726783SM	1	TANK, Fuel, Diesel
58	1726780SM	1	TANK, Fuel, Gas
59	1716927ASM	2	SUPPORT, Fuel Tank
60	1723168SM	2	HOOK
61	2171600SM	2	STRAP, Hood, Black Rubber
62	1715923SM	1	HEADLIGHT ASSEMBLY
63	1930641SM	12	NUT, Hex, Flange Whiz Lock, Black, 1/4-20
64	1960611SM	4	CAPSCREW, Hex, Whiz Lock, Black, 1/4-20 x 1
65	1725631CSM	1	GRILL, Legacy XL
65	1725631DSM	1	GRILL
66	1718479SM	1	ROD, Hood Hinge
67	1726044SM	4	SCREW, Binding
68	1726454SM	2	CLIP, Hood
69	1726482SM	2	EDGING, Side Panel
70	1960518SM	2	NUT, Push (Diesel Only)
71	1725060SM	2	SCREW, Quarter Turn (Diesel Only)

Footnotes

Note* Part number(s) not available at this time.

The above parts group applies to the following Mfg. Nos.:

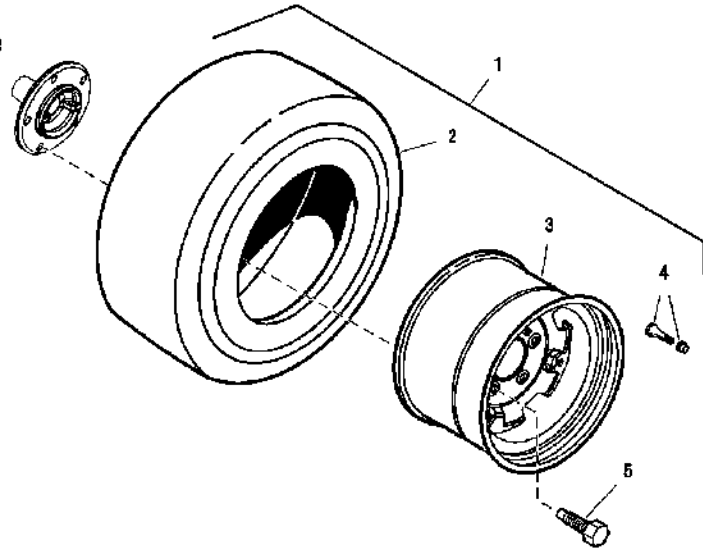
1695229 - Legacy XL 2690663 - 2927
1695232 - 2927 2690664 - 2927
2690659 - Legacy XL 2690665 - 2027
2690660 - Legacy XL 2690666 - 2027
2690661 - Legacy XL
2690662 - 2927

Wheel & Tires Group

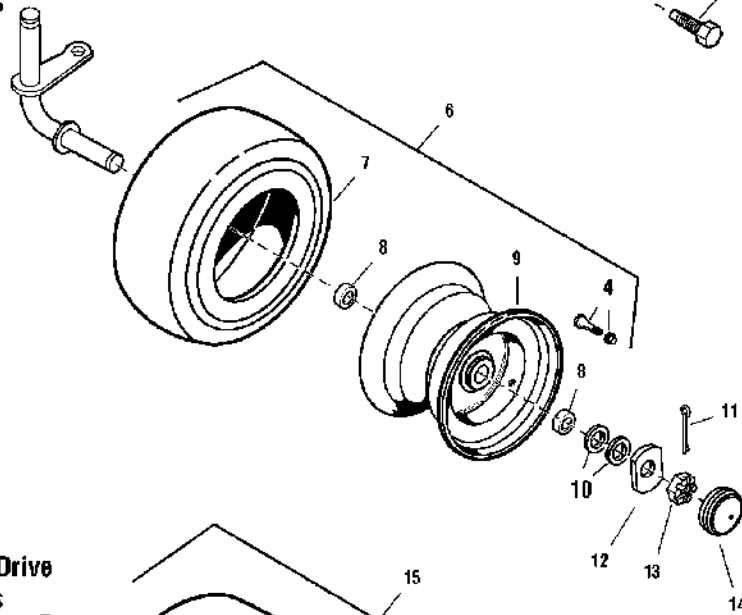
NOTE: Unless noted otherwise, use the standard hardware torque specification chart.

986335

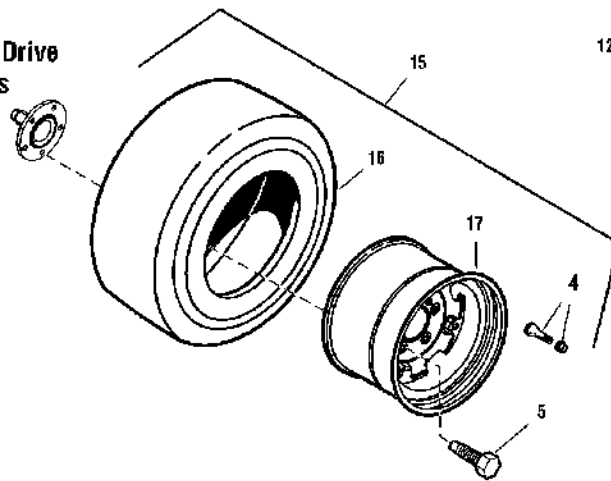
Rear 2 and 4 Wheel Drive Wheels & Tires



Front 2 Wheel Drive Wheels & Tires



Front 4 Wheel Drive Wheels & Tires



The above parts group applies to the following Mfg. Nos.:

1695229 - Legacy XL	2690663 - 2927
1695232 - 2927	2690664 - 2927
2690659 - Legacy XL	2690665 - 2027
2690660 - Legacy XL	2690666 - 2027
2690661 - Legacy XL	
2690662 - 2927	

Wheel & Tires Group

REF NO	PART NO.	QTY.	DESCRIPTION
1	1724845SM	2	WHEEL & TIRE ASSEMBLY, Rear, Turf Tires (Includes Reference Nos. 2, 3, & 4)
1	1726030SM	2	WHEEL & TIRE ASSEMBLY, Rear, HD Field Trac (Includes Reference Nos. 2, 3, & 4)
2	1726595SM	2	TIRE, Field Trac, 26 x 12-12
2	1725724SM	2	TIRE, Turf, 26 x 12-12
3	1726030SM	2	WHEEL ASSEMBLY
4	2172353SM	2	VALVE STEM & CAP
5	1729280SM	10	HUB BOLT (Quantity 20 total for 4 Wheel Drive Models)
6	1724848SM	2	WHEEL & TIRE ASSEMBLY, Front, 2 Wheel Drive Models, Turf Tires (Includes Reference Nos. 4, 7, 8, & 9)
7	1725720SM	2	TIRE, Turf, 18 x 8.5-8
8	1725722SM	4	BEARING
9	1725721SM	2	WHEEL ASSEMBLY, Front, 2 Wheel Drive
10	2860202SM	2	WASHER
11	1923500SM	2	PIN, Cotter
12	1722717SM	2	WASHER, Special
13	1960387SM	2	NUT, Hex, Slotted, 3/4-16, Black
14	1722676SM	2	CAP, Hub, Grey
15	1724849SM	2	WHEEL & TIRE ASSEMBLY, Front, 4 Wheel Drive, Turf Tires, (Includes Reference Nos. 4, 7, & 17)
15	1726032SM	2	WHEEL & TIRE ASSEMBLY, Front, 4 Wheel Drive, HD Field Trac, (Includes Reference Nos. 4, 7, & 16)
16	1726595SM	2	TIRE, Field Trac, 18 x 8.5-10
17	1725719SM	2	WHEEL ASSEMBLY, Front, 4 Wheel Drive

Not for
Reproduction

Footnotes

Note* Field Trac Tires only available as an assembly.

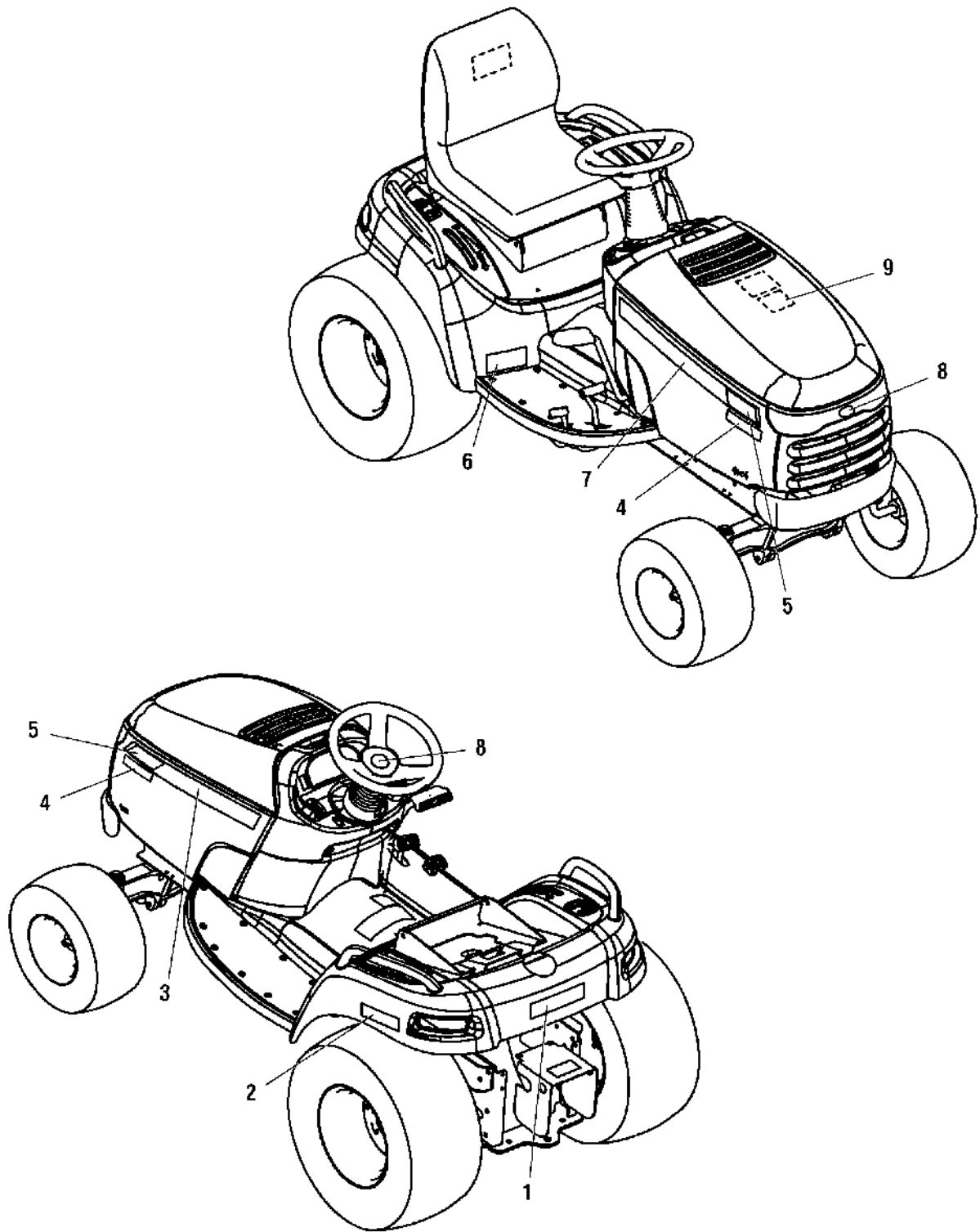
The above parts group applies to the following Mfg. Nos.:

1695229 - Legacy XL 2690663 - 2927
 1695232 - 2927 2690664 - 2927
 2690659 - Legacy XL 2690665 - 2027
 2690660 - Legacy XL 2690666 - 2027
 2690661 - Legacy XL
 2690662 - 2927

Decals Group - Brand & Model

B986581

NOTE: Unless noted otherwise,
use the standard hardware torque
specification chart.



The above parts group applies to the following Mfg. Nos.:

1695229 - Legacy XL	2690663 - 2927
1695232 - 2927	2690664 - 2927
2690659 - Legacy XL	2690665 - 2027
2690660 - Legacy XL	2690666 - 2027
2690661 - Legacy XL	
2690662 - 2927	

Decals Group - Brand & Model

REF NO	PART NO.	QTY.	DESCRIPTION
1	1722983SM	1	DECAL, Simplicity
1	1708926SM	1	DECAL, AGCO
1	1714363SM	1	DECAL, Massey Ferguson
2	1717313SM	1	DECAL, Automatic Traction Control, Orange
2	1718025SM	1	DECAL, Automatic Traction Control, Red
3	1725566SM	1	DECAL, Hood Stripe, LH (Simplicity)
3	1727971SM	1	DECAL, Hood Stripe, LH (Massey Ferguson)
3	1723119SM	1	DECAL, Hood Stripe, LH (AGCO)
4	1725805SM	2	DECAL, 27HP LC, Black (Massey Ferguson)
4	1725806SM	2	DECAL, 27HP LC, White (AGCO)
5	1728055SM	2	DECAL, 2927 (Massey Ferguson)
5	1725778SM	2	DECAL, 2027 (AGCO)
6	1725568SM	1	DECAL, Legacy XL, 27 HP
7	1725567SM	1	DECAL, Hood Stripe, RH (Simplicity)
7	1727972SM	1	DECAL, Hood Stripe, RH (Massey Ferguson)
7	1723118SM	1	DECAL, Hood Stripe, RH (AGCO)
8	1731418SM	2	DECAL, Simplicity Icon
9	1720454SM	1	DECAL, Touch Up, Orange
9	1725072SM	1	DECAL, Touch Up, Red

Not for
Reproduction

Footnotes

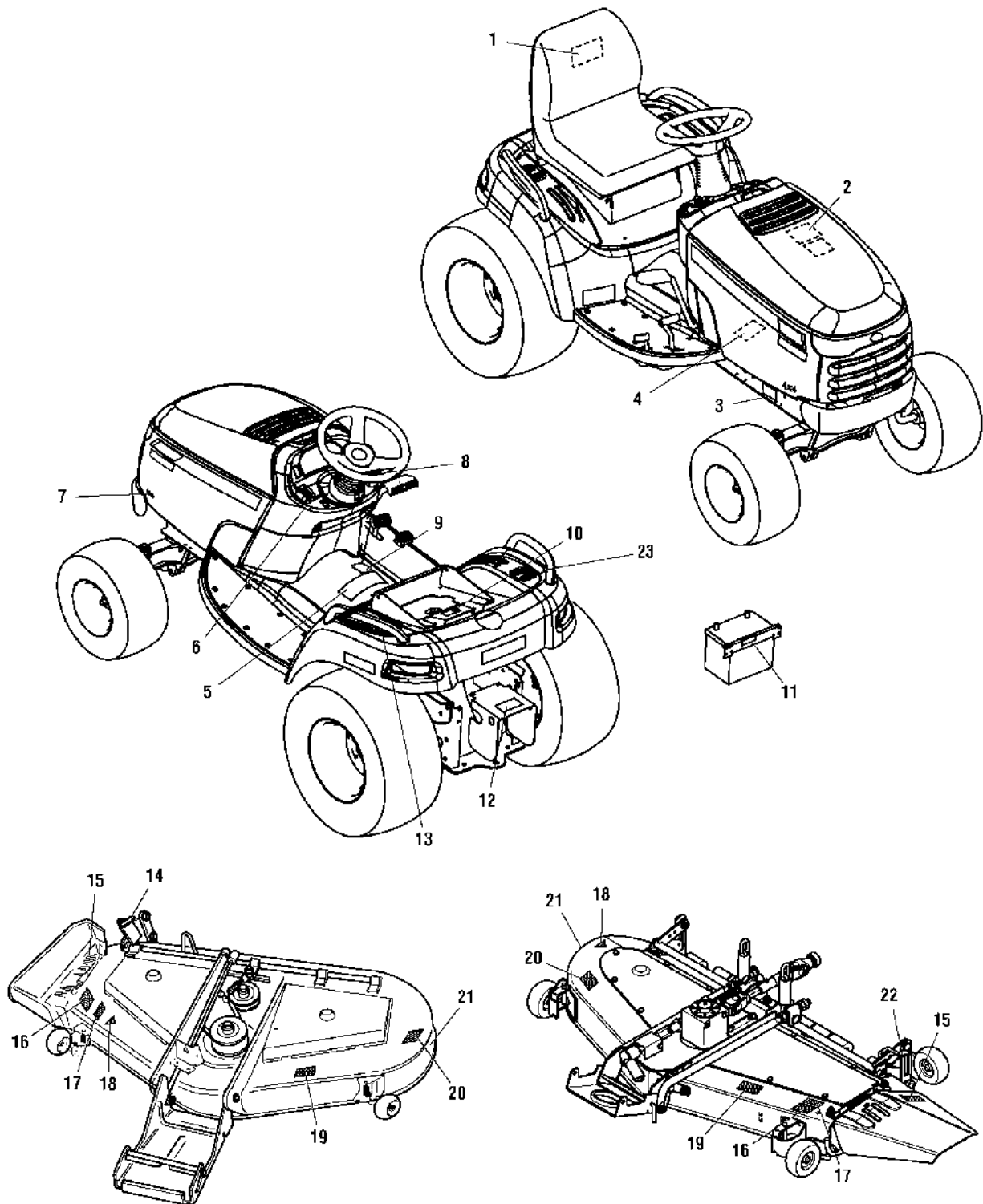
The above parts group applies to the following Mfg. Nos.:

1695229 - Legacy XL 2690663 - 2927
1695232 - 2927 2690664 - 2927
2690659 - Legacy XL 2690665 - 2027
2690660 - Legacy XL 2690666 - 2027
2690661 - Legacy XL
2690662 - 2927

Decals Group - Safety & Common

NOTE: Unless noted otherwise,
use the standard hardware torque
specification chart.

C986581



The above parts group applies to the following Mfg. Nos.:

1695229 - Legacy XL	2690663 - 2927
1695232 - 2927	2690664 - 2927
2690659 - Legacy XL	2690665 - 2027
2690660 - Legacy XL	2690666 - 2027
2690661 - Legacy XL	
2690662 - 2927	

Decals Group - Safety & Common

REF NO	PART NO.	QTY.	DESCRIPTION
1	1708927	1	DECAL, USA Logo
2	1727013SM	1	DECAL, Belts & Blades
3	*	1	DECAL, Serial Number
3	*	1	DECAL, Power Mass (Export)
4	1726045SM	1	DECAL, Rotating Fan Blades
4	1726086SM	1	DECAL, Rotating Fan Blades (Export)
5	1726923SM	1	DECAL, Operating Instructions
5	1723175SM	1	DECAL, Operating Instructions (Export)
6	1725571SM	1	DECAL, Throttle Speed
7	1726373SM	2	DECAL, 4 X 4, Simplicity
7	1726374SM	2	DECAL, 4 X 4, (Massey Ferguson & AGCO)
8	1722806SM	1	DECAL, Ignition Switch
9	1725603SM	1	DECAL, Hydraulic Lift
10	1725776SM	1	DECAL, Transmission Release Valve
11	1716539SM	1	DECAL, Warning Battery Ground
12	1725575SM	1	DECAL, Danger, Rotating Parts
12	1725618SM	1	DECAL, Danger, Rotating Parts (Export)
13	1725574SM	1	DECAL, PTO Selector Position (540 PTO Models Only)
14	1721197SM	1	DECAL, Height of Cut, 54" Deck
15	1664141SM	1	DECAL, Cutting Line
16	1704277SM	1	DECAL, Danger (Chute in Place)
17	1722791SM	1	DECAL, 54"
17	1722792SM	1	DECAL, 60"
17	1722793SM	1	DECAL, 48"
18	*	1	DECAL, OPEI Certified
19	1720911SM	1	DECAL, Belt Installation, 54"
19	1725707SM	1	DECAL, Belt Installation, 60"
19	1725710SM	1	DECAL, Belt Installation, 48"
20	1704276SM	1	DECAL, Danger, (Hands Under Deck)
21	1722771SM	1	DECAL, Free Floating Mower
22	1717583SM	1	DECAL, Height of Cut, 60" & 48" Mower Decks
23	1727089SM	1	DECAL, 4WD Rollover

Footnotes

Note* Not a Service Part.

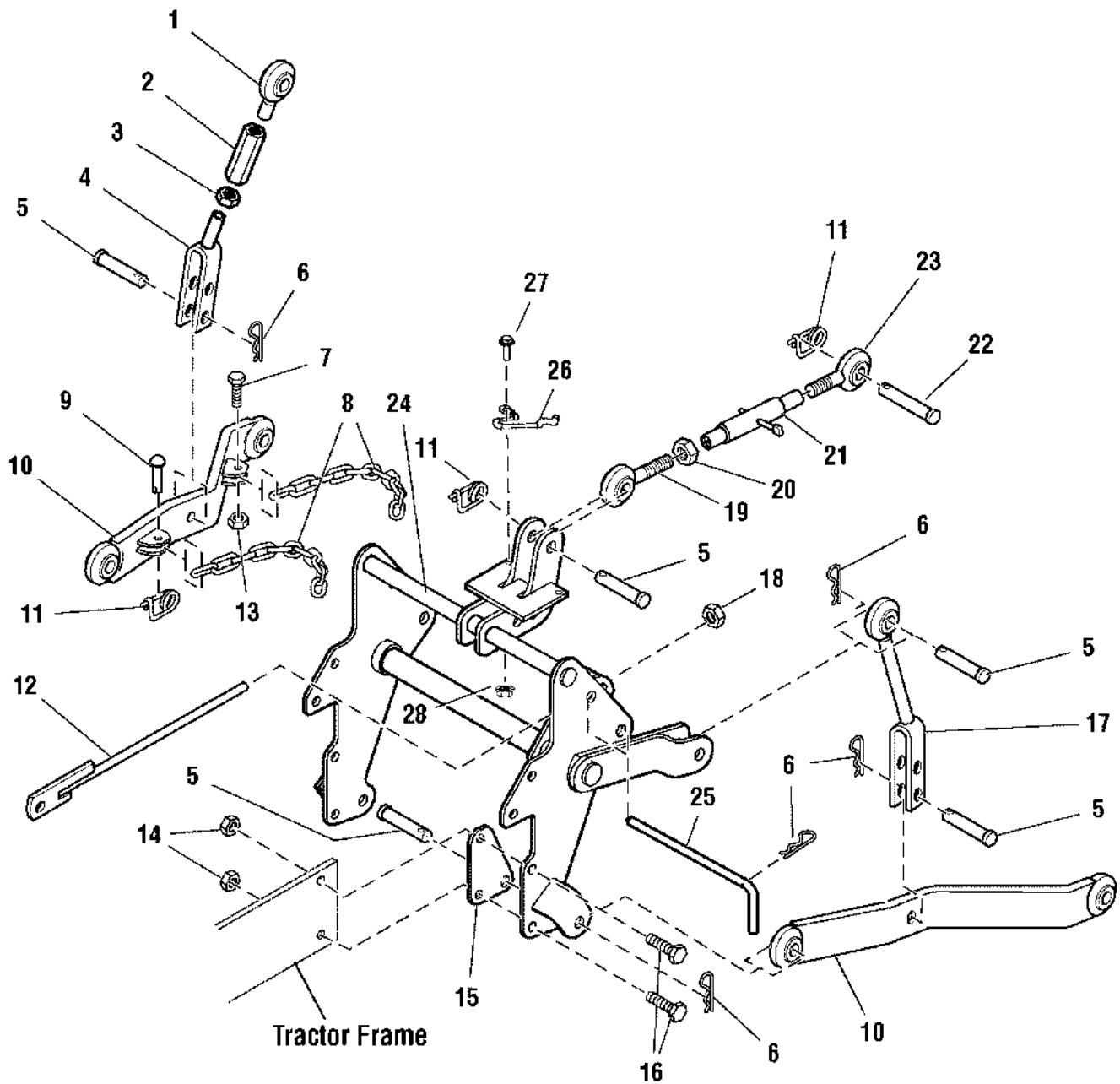
The above parts group applies to the following Mfg. Nos.:

1695229 - Legacy XL 2690663 - 2927
 1695232 - 2927 2690664 - 2927
 2690659 - Legacy XL 2690665 - 2027
 2690660 - Legacy XL 2690666 - 2027
 2690661 - Legacy XL
 2690662 - 2927

3-Point Hitch Group

986339

NOTE: Unless noted otherwise,
use the standard hardware torque
specification chart.



The above parts group applies to the following Mfg. Nos.:

- 2690660 - Legacy XL
- 2690661 - Legacy XL
- 2690663 - 2927
- 2690664 - 2927
- 2690665 - 2027
- 2690666 - 2027

3-Point Hitch Group

REF NO	PART NO.	QTY.	DESCRIPTION
1	1716422SM	1	BALL JOINT & STUD ASSEMBLY, R.H., Upper
2	1716425SM	1	TURNBUCKLE, 5/8-18 x 2-1/2
3	1922014SM	1	NUT, Hex, Jam, 5/8-18
4	1724829SM	1	CLEVIS ASSEMBLY
5	1725049SM	7	PIN, Clevis, 5/8 x 2-1/2
6	1960033SM	9	CLIP, Hair Pin
7	1921969SM	2	CAPSCREW, Hex Head, 3/8-16 x 1-1/2
8	1700312ASM	2	CHAIN, 16 Link
9	2156306SM	2	PIN, Round Head, 3/4 x 1-1/2
10	1724769SM	2	LINK & BALL JOINT ASSEMBLY
11	2176012SM	3	PIN, Spring
12	1724763SM	1	ROD ASSEMBLY, Lift
13	1919439SM	2	LOCKNUT, Hex, Nylock, 3/8-16
14	1960355SM	8	LOCKNUT, Hex, 1/2-13
15	1724826ASM	2	SUPPORT, Inner, Pin
16	1920328SM	8	CAPSCREW, Hex Head, 1/2-13 x 1-1/2
17	1724809SM	1	CLEVIS ASSEMBLY, Fixed
18	2860743SM	1	NUT, Hex Top Lock, 1/2-13, Yellow
19	1700419SM	1	STUD & BALL JOINT ASSEMBLY, R.H.
20	1960297SM	1	NUT, Jam, 3/4-10
21	1700479SM	1	TUBE & PIN ASSEMBLY, Upper
22	1725244SM	1	PIN, Clevis, Rear
23	1725235SM	1	BALL JOINT & STUD ASSEMBLY
24	1724758ASM	1	HITCH ASSEMBLY
25	1725281SM	1	ROD, Hitch
26	1726412ASM	2	CLAMP, Upper Link .162 Diameter, Stainless, Black
27	1960667SM	2	Screw, Hex Lock Flange, 5/16-18 x 1
28	1960684SM	2	NUT, Hex, Conical Washer, 5/16-18

Not for
Reproduction

Footnotes

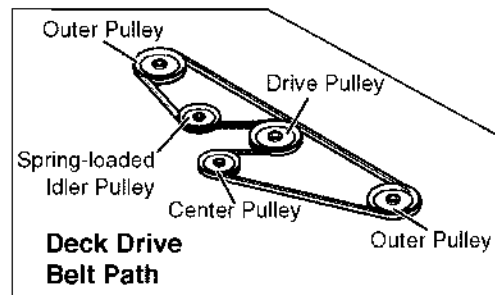
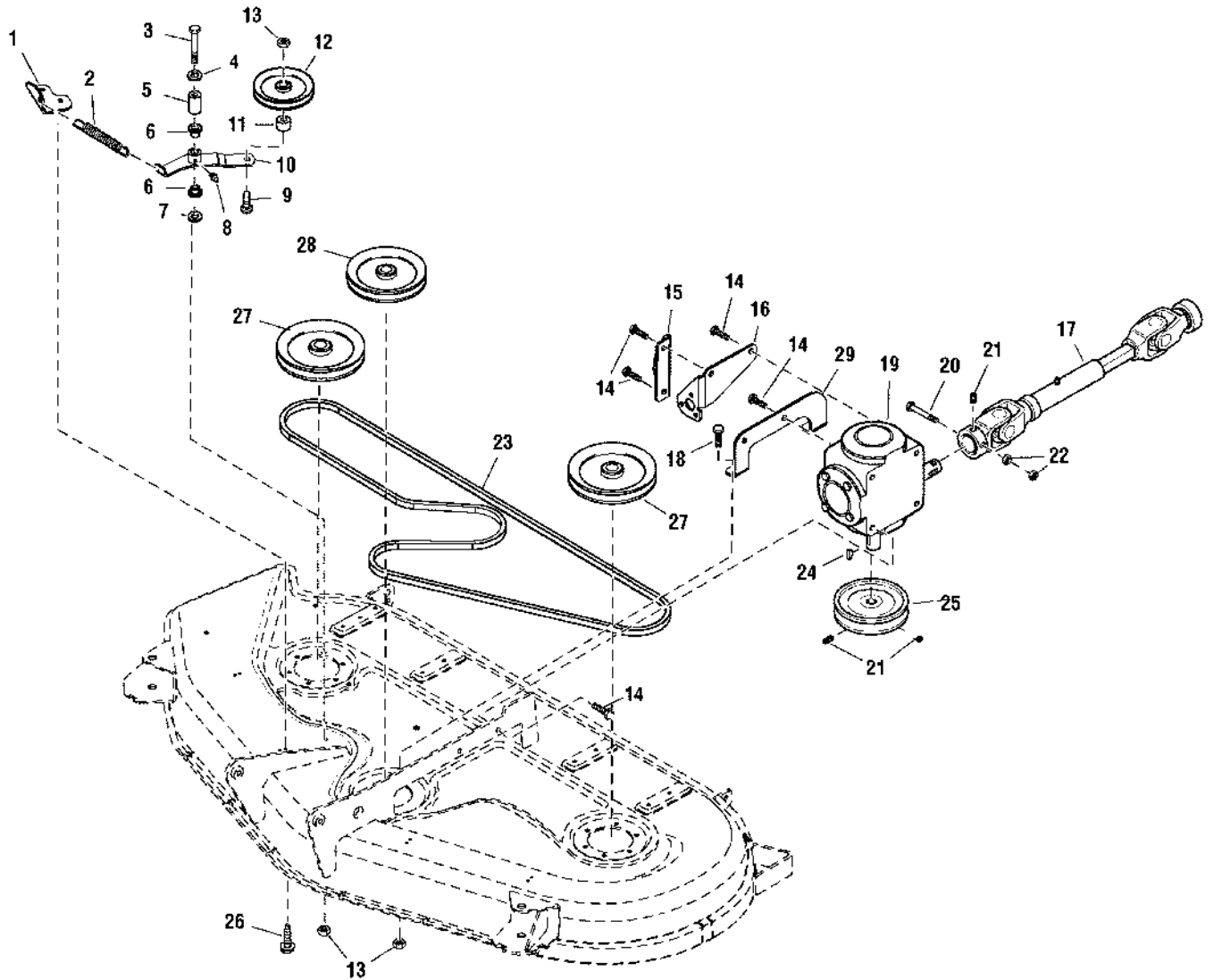
The above parts group applies to the following Mfg. Nos.:

- 2690660 - Legacy XL
- 2690661 - Legacy XL
- 2690663 - 2927
- 2690664 - 2927
- 2690665 - 2027
- 2690666 - 2027

54" Mower Deck - Drive Group

986349

NOTE: Unless noted otherwise,
use the standard hardware torque
specification chart.



The above parts group applies to the following Mfg. Nos.:

- | | |
|---------------------|----------------|
| 1694507 - 54" Mower | 2690663 - 2927 |
| 1694509 - 54" Mower | 2690664 - 2927 |
| 2690659 - Legacy XL | 2690665 - 2027 |
| 2690660 - Legacy XL | 2690666 - 2027 |
| 2690661 - Legacy XL | |
| 2690662 - 2927 | |

54" Mower Deck - Drive Group

REF NO	PART NO.	QTY.	DESCRIPTION
1	1725190SM	1	BRACKET, Spring Mounting
2	1718016SM	1	SPRING, Extension
3	1923701SM	1	CAPSCREW, Hex Head, 3/8-16 x 2, Black
4	1924940SM	1	WASHER, 3/8
5	1674669SM	1	SPACER
6	1676148SM	2	BUSHING
7	1922611SM	1	WASHER, 3/8
8	2812808SM	1	FITTING, Grease
9	1931352SM	1	CARRIAGE BOLT, 3/8-16 x 1-1/2
10	1725189ASM	1	IDLER ARM ASSEMBLY (Includes Ref. No. 6)
11	1667811SM	1	SPACER
12	1725372SM	1	PULLEY, Idler
13	1960687SM	4	NUT, Hex, Flange Lock, ESNA, 3/8-16, Black
14	1960695SM	6	CAPSCREW, Hex Washer Head, 3/8-16 x 1-1/8, Black
15	1724513ASM	1	SUPPORT, Height of Cut
16	1724514ASM	1	BRACE, Height of Cut
17	1725217SM	1	DRIVE SHAFT ASSEMBLY
18	1960702SM	2	CARRIAGE BOLT, Round Head Square Neck 3/8-16 x 1
19	1725298SM	1	GEARBOX ASSEMBLY
20	1921159SM	1	CAPSCREW, Hex Head, 1/4-20 x 2-1/4, Black
21	1928721SM	3	SCREW, Set, Square Head, Cup Point, 5/16-18 x 1/2, G8
22	1923358SM	2	NUT, Hex Center Lock, 1/4-20, Black
23	1732086SM	1	V-BELT, 54" Mower 103.50
23	1725208SM	1	V-BELT, 54" Mower 102.50 (CE/Export)
24	2822138SM	1	KEY, Hi Pro, 1/4 x 7/8
25	1731974SM	1	PULLEY & HUB ASSEMBLY
25	1725492SM	1	PULLEY & HUB ASSEMBLY (CE/Export)
26	1960568SM	2	CAPSCREW, Hex Head, 1/4-20 x 7/8, Black
27	1720182ASM	2	PULLEY ASSEMBLY, Side
28	1679161ASM	1	PULLEY ASSEMBLY, Center
29	1724537ASM	1	SUPPORT, Gearbox

Footnotes

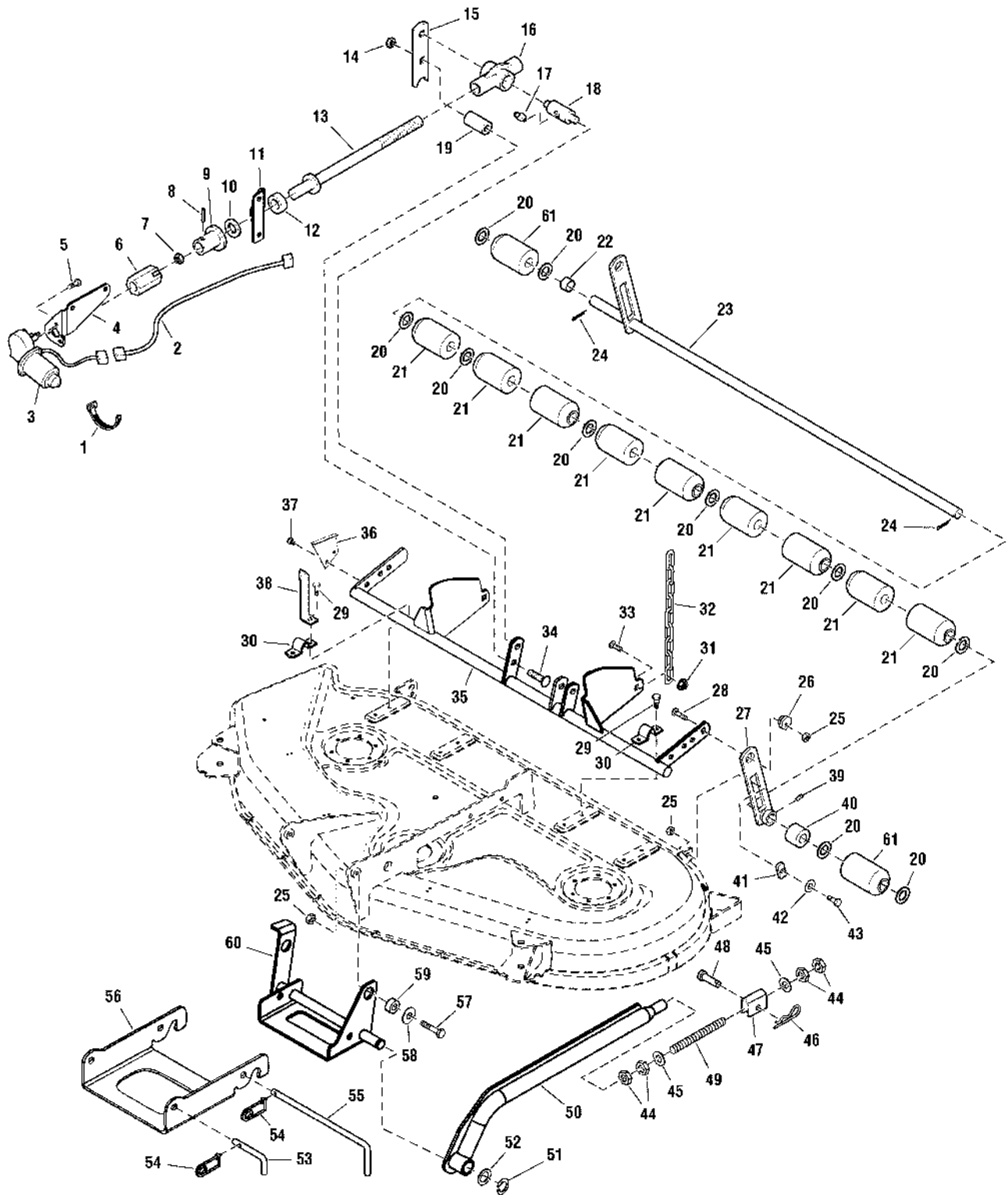
The above parts group applies to the following Mfg. Nos.:

1694507 - 54" Mower 2690663 - 2927
 1694509 - 54" Mower 2690664 - 2927
 2690659 - Legacy XL 2690665 - 2027
 2690660 - Legacy XL 2690666 - 2027
 2690661 - Legacy XL
 2690662 - 2927

54" Mower Deck - Height Adjustment & Roller Group

986348

NOTE: Unless noted otherwise,
use the standard hardware torque
specification chart.



The above parts group applies to the following Mfg. Nos.:

- | | |
|---------------------|----------------|
| 1694507 - 54" Mower | 2690663 - 2927 |
| 1694509 - 54" Mower | 2690664 - 2927 |
| 2690659 - Legacy XL | 2690665 - 2027 |
| 2690660 - Legacy XL | 2690666 - 2027 |
| 2690661 - Legacy XL | |
| 2690662 - 2927 | |

54" Mower Deck - Height Adjustment & Roller Group

REF NO	PART NO.	QTY.	DESCRIPTION
1	1701011SM	1	TIE, Self Locking, BLACK
2	1716986SM	1	HARNESS ASSEMBLY
3	1715885SM	1	MOTOR, Electric
4	1724514ASM	1	BRACE, Height of Cut
5	2860664SM	3	CAPSCREW, Hex Washer Head, Dog Point, 1/4-20 x7/8
6	1715886SM	1	ADAPTER, Motor
7	1960685SM	1	NUT, Hex, Washer, KEPS, 1/4-20
8	1960581SM	1	PIN, Spring
9	1715887SM	1	HUB
10	1716998SM	1	WASHER, Special, Nylon
11	1724513ASM	1	SUPPORT, Height of Cut
12	1715891SM	1	BEARING, Thrust
13	1724524SM	1	ROD & SPACER ASSEMBLY
14	1960689SM	1	NUT, Hex, Top Lock, 1/2-13
15	1715881ASM	1	LEVER
16	1716424SM	1	COVER, Rod
17	1704314SM	1	FITTING, Lube
18	1715892SM	1	TRUNNION
19	1679166SM	1	SPACER
20	2860626SM	7	WASHER, 1
21	1719748SM	9	ROLLER
22	1701873SM	2	SPACER
23	1720158ASM	1	SHAFT & BAR ASSEMBLY
24	1918459SM	2	PIN, Cotter
25	2860681SM	6	NUT, Hex Top Lock, 3/8-16
26	1704082SM	2	NUT, Hex Adjusting
27	1715882ASM	1	BAR & HUB ASSEMBLY
28	1931353SM	2	CARRIAGE BOLT, 3/8-16 x 1-3/4
29	1664847SM	8	CAPSCREW, Hex Washer Head, 5/16-18 x 3/4
30	1720147ASM	4	STRAP
31	1960687SM	2	NUT, Hex Flange Lock, ESNA, 3/8-16
32	1725735ASM	2	CHAIN, 9 Link, 12-1/2" Long
33	1960702SM	2	CARRIAGE BOLT, 3/8-16 x 1
34	1960489SM	1	CARRIAGE BOLT, 1/2-13 x 2-1/2
35	1724526ASM	1	SHAFT ASSEMBLY
36	1704116ASM	1	BRACKET, Height of Cut
37	1924856SM	2	CAPSCREW, Hex Washer Head, Taptite, 5/16-18 x 1/2
38	1720643ASM	1	INDICATOR, Height of Cut
39	1928721SM	1	SCREW, Set, Square Head, Cup Point, 5/16-18 x 1/2 G8
40	1714812SM	1	SPACER
41	1677507SM	2	SLIDE
42	1924361SM	2	WASHER, 1/2
43	2172622SM	2	SHOULDER BOLT, 3/8-16 x 1-11/32
44	1922014SM	4	NUT, Hex, Jam, 5/8-18

Footnotes

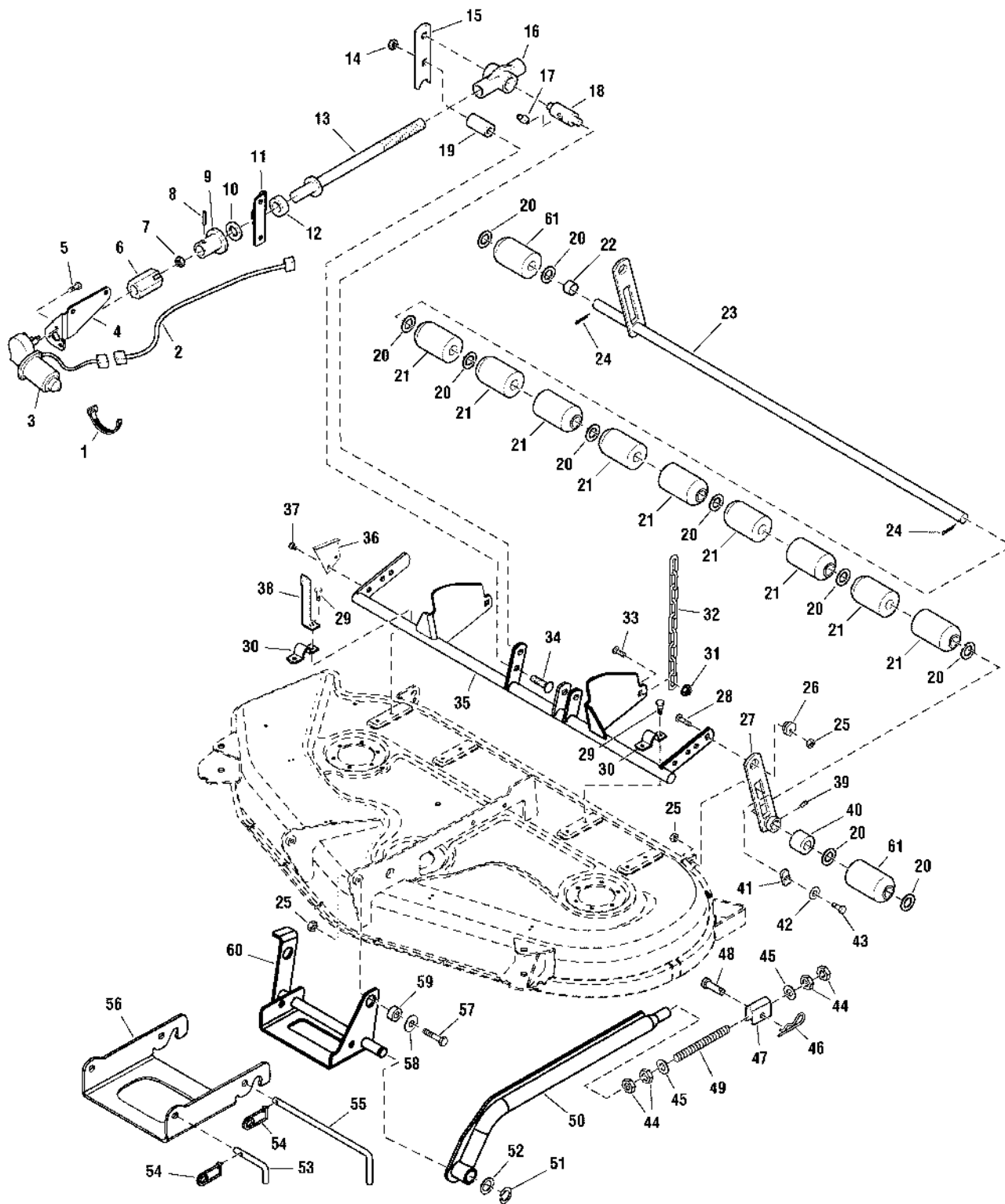
The above parts group applies to the following Mfg. Nos.:

1694507 - 54" Mower 2690663 - 2927
 1694509 - 54" Mower 2690664 - 2927
 2690659 - Legacy XL 2690665 - 2027
 2690660 - Legacy XL 2690666 - 2027
 2690661 - Legacy XL
 2690662 - 2927

54" Mower Deck - Height Adjustment & Roller Group

986348

NOTE: Unless noted otherwise,
use the standard hardware torque
specification chart.



The above parts group applies to the following Mfg. Nos.:

- | | |
|---------------------|----------------|
| 1694507 - 54" Mower | 2690663 - 2927 |
| 1694509 - 54" Mower | 2690664 - 2927 |
| 2690659 - Legacy XL | 2690665 - 2027 |
| 2690660 - Legacy XL | 2690666 - 2027 |
| 2690661 - Legacy XL | |
| 2690662 - 2927 | |

54" Mower Deck - Height Adjustment & Roller Group

REF NO	PART NO.	QTY.	DESCRIPTION
45	1924366SM	2	WASHER, 5/8
46	1960074SM	1	CLIP, Hair Pin
47	1725201ASM	1	TRUNION
48	1722819SM	1	PIN, Yoke, Drilled, 1/2 x 2
49	1722507SM	1	STUD, 5/8-18 x 8-9/16
50	1725296ASM	1	ARM & TUBE ASSEMBLY
51	1725092SM	1	RING, Retaining, External, 1
52	1919394SM	1	WASHER,1
53	1717075SM	2	PIN
54	2176012SM	3	PIN, Spring
55	1715872SM	1	ROD
56	1724528ASM	1	HITCH
57	1921971SM	2	CAPSCREW, Hex Head, 3/8-16 x 1-3/4
58	1924356SM	2	WASHER, 3/8
59	1726089SM	3	SPACER
60	1724523ASM	1	HITCH ASSEMBLY
61	1678043SM	2	ROLLER

Not for
Reproduction

Footnotes

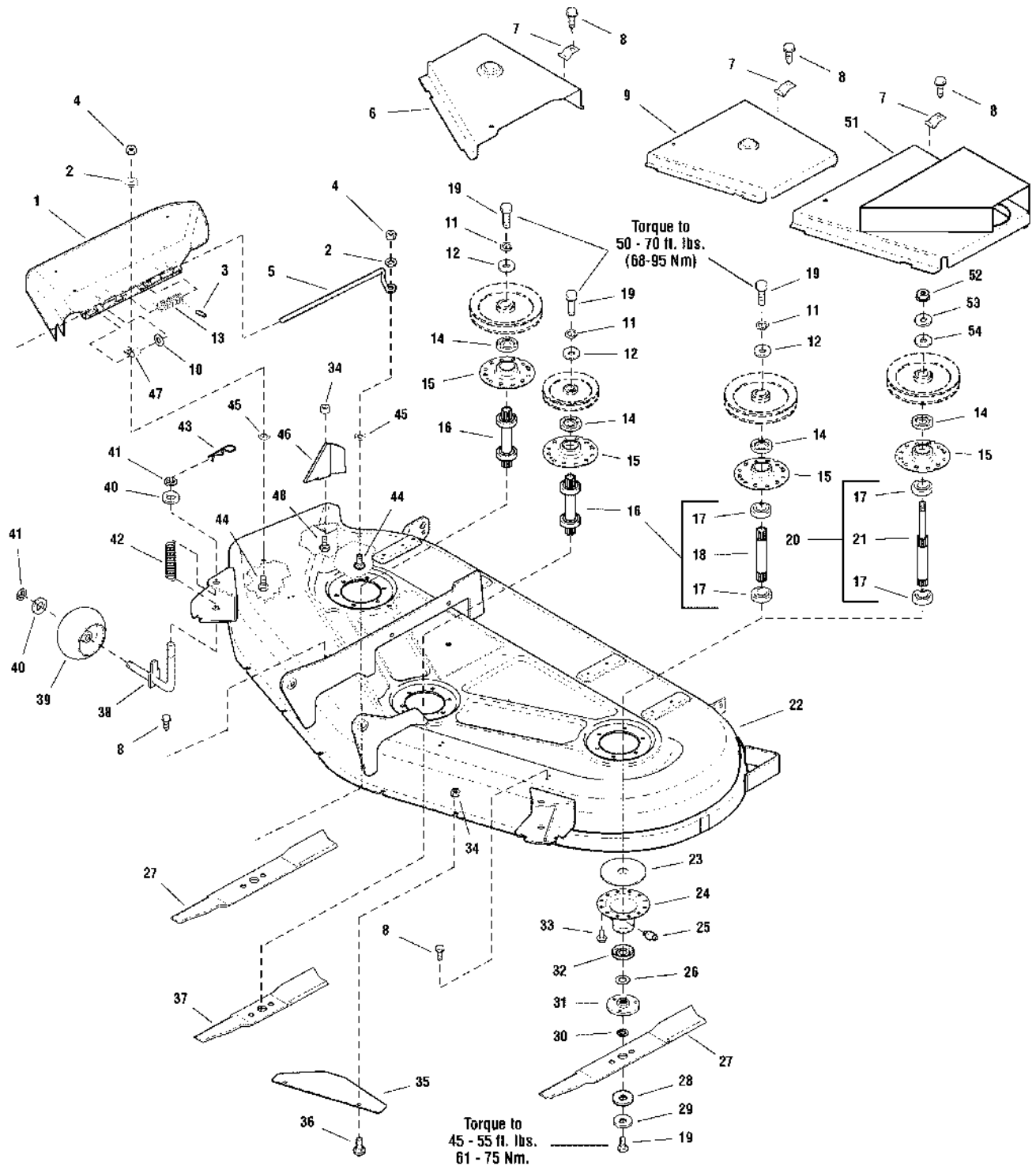
The above parts group applies to the following Mfg. Nos.:

1694507 - 54" Mower 2690663 - 2927
1694509 - 54" Mower 2690664 - 2927
2690659 - Legacy XL 2690665 - 2027
2690660 - Legacy XL 2690666 - 2027
2690661 - Legacy XL
2690662 - 2927

54" Mower Deck - Housing, Arbors & Blade Group

986275

NOTE: Unless noted otherwise, use the standard hardware torque specification chart.



The above parts group applies to the following Mfg. Nos.:

- 1694507 - 54" Mower 2690663 - 2927
- 1694509 - 54" Mower 2690664 - 2927
- 2690659 - Legacy XL 2690665 - 2027
- 2690660 - Legacy XL 2690666 - 2027
- 2690661 - Legacy XL
- 2690662 - 2927

54" Mower Deck - Housing, Arbors & Blade Group

REF NO	PART NO.	QTY.	DESCRIPTION
1	1705449SM	1	DEFLECTOR, Plastic
2	1960353SM	2	WASHER, Plain, 1/4
3	1723323SM	2	CAP, Spring End
4	1920397SM	2	NUT, Hex, Lock ESNA, 1/4-20, Black
5	1706709SM	1	ROD, Deflector, Front
6	1720184CSM	1	COVER, Arbor, RH (Orange)
6	1720184DSM	1	COVER, Arbor, RH (Red)
7	1720623SM	4	CLIP, Spring
8	1929000SM	4	SCREW Hex Head, Taptite, 1/4-20 x 3/8
9	1720621CSM	1	COVER, Arbor, LH Landlord (Orange)
9	1720186CSM	1	COVER, Arbor, LH Legacy XL (Orange)
9	1720186DSM	1	COVER, Arbor, LH (Red)
10	1919326SM	1	WASHER, Plain, 5/16
11	1918199SM	2	WASHER, Lock, 7/16
12	1933263SM	2	WASHER, 7/16
13	7101082SM	1	SPRING, Torsion
14	1657969SM	3	SHIELD, Bearing Upper, Arbor
15	1655729ASM	3	HOUSING, Arbor, Top
16	1676278SM	2	ARBOR SHAFT & BEARING ASSEMBLY (Includes Ref. Nos. 17 & 18)
17	2108202SM	6	BEARING, Ball, 3/4 x 1-3/4 x 5/8
18	1676277SM	3	ARBOR SHAFT
19	2823471SM	6	CAPSCREW, Hex Head, 7/16-14 x 1-1/4, G8
20	1726825SM	1	ARBOR SHAFT & BEARING ASSEMBLY
21	1725812SM	1	ARBOR SHAFT
22	1687001SM	1	HOUSING ASSEMBLY, 54" Legacy 4WD (Orange)
22	1687013SM	1	HOUSING ASSEMBLY, 54" Legacy XL (Orange)
22	1687177SM	1	HOUSING ASSEMBLY, 54" 2700 4WD (Red)
22	1724973ASM	1	HOUSING ASSEMBLY, 54" Landlord (Black)
23	1707335SM	3	GASKET, Foam
24	1703273ASM	3	ASSEMBLY, Housing, Bottom (Includes Ref. No. 25)
25	1704314SM	3	FITTING, Lube
26	1700230SM	3	WASHER, Shim
27	1725921SM	2	BLADE, Mower, 20-1/2
28	1679711SM	3	WASHER, Spline
29	1656916SM	3	WASHER, Spring
30	1657528SM	3	RING, Self Locking
31	1655777SM	3	ADAPTER, Blade
32	1700229SM	3	SHIELD, Grass
33	1664847SM	16	CAPSCREW, Hex Head, Taptite, 5/16-18x 3/4, Black
34	1960684SM	3	NUT, Hex, KEPS, 5/16-18, Black
35	1720962ASM	1	BAFFLE, Front, Anti-Blowout
36	1931333SM	2	CARRIAGE BOLT, 5/16-18 x 3/4
37	1725922SM	1	BLADE, Mower, 16
38	1720497SM	2	SPINDLE, Assembly

Footnotes

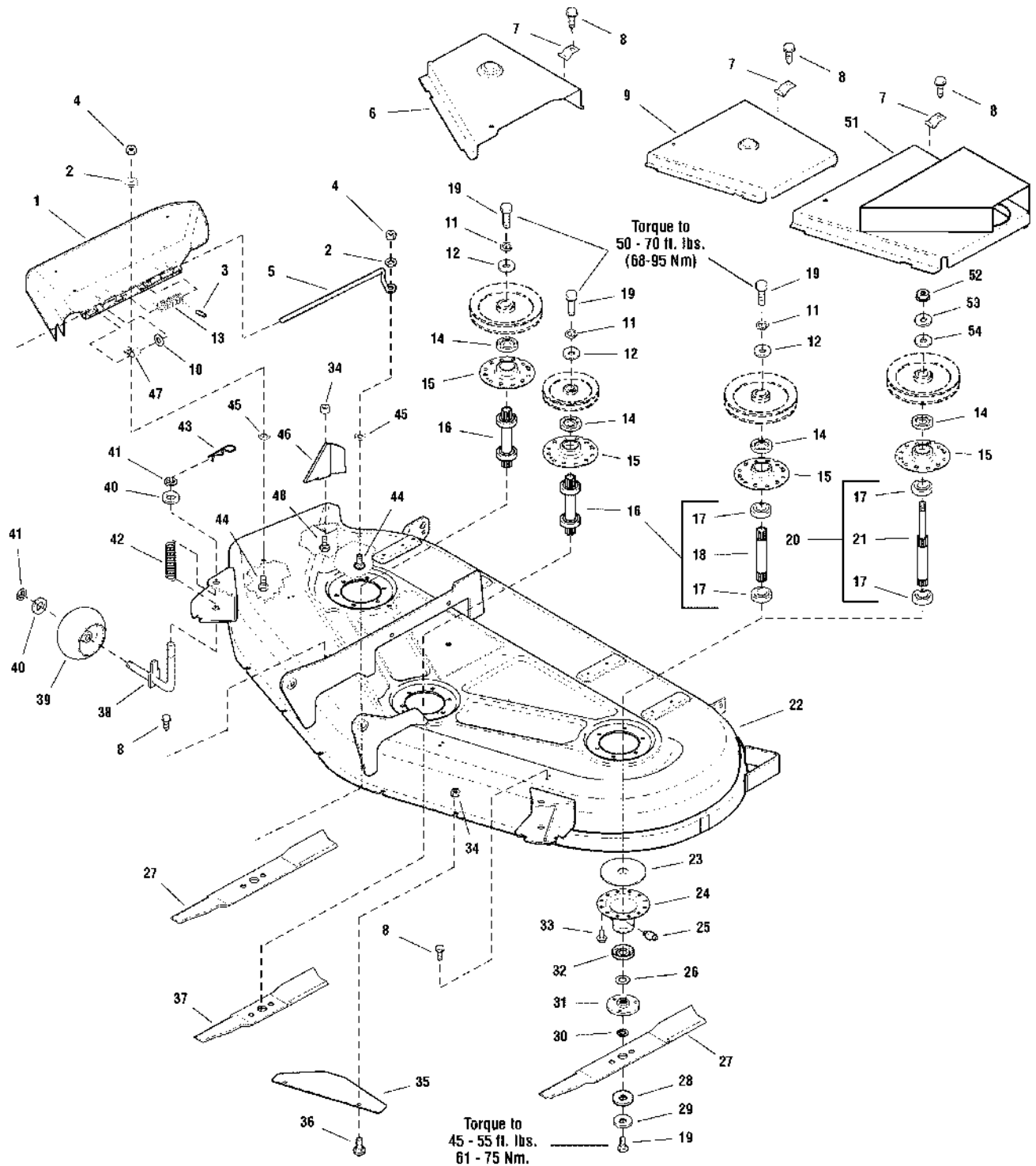
The above parts group applies to the following Mfg. Nos.:

1694507 - 54" Mower 2690663 - 2927
 1694509 - 54" Mower 2690664 - 2927
 2690659 - Legacy XL 2690665 - 2027
 2690660 - Legacy XL 2690666 - 2027
 2690661 - Legacy XL
 2690662 - 2927

54" Mower Deck - Housing, Arbors & Blade Group

986275

NOTE: Unless noted otherwise,
use the standard hardware torque
specification chart.



The above parts group applies to the following Mfg. Nos.:

- | | |
|---------------------|----------------|
| 1694507 - 54" Mower | 2690663 - 2927 |
| 1694509 - 54" Mower | 2690664 - 2927 |
| 2690659 - Legacy XL | 2690665 - 2027 |
| 2690660 - Legacy XL | 2690666 - 2027 |
| 2690661 - Legacy XL | |
| 2690662 - 2927 | |

54" Mower Deck - Housing, Arbors & Blade Group

REF NO	PART NO.	QTY.	DESCRIPTION
39	1716353SM	2	WHEEL, Gauge
40	1960020SM	2	WASHER, Plain 1/2
41	1703805SM	4	KLIP, Ring
42	1716346SM	2	SPRING
43	1960033SM	1	PIN, Hairpin
44	1960698SM	2	CARRIAGE BOLT, 1/4-20 x 1, Black
45	1960518SM	2	NUT, Push
46	1724976ASM	1	BAFFLE, Discharge
47	1704873SM	1	CLAMP, Wire
48	1925205SM	1	CAPSCREW, Hex Head, 5/16-18 x 5/8, Black
51	1720621ASM	1	ASSEMBLY, Cover, Arbor (Black)
51	1720621CSM	1	ASSEMBLY, Cover, Arbor (Orange)
52	1714419SM	1	NUT, Hex Flange 9/16-18
53	1713675SM	2	WASHER, Belleville .05 Thick
54	1918431SM	1	WASHER, 1/2

Not for
Reproduction

Footnotes

The above parts group applies to the following Mfg. Nos.:

1694507 - 54" Mower 2690663 - 2927
1694509 - 54" Mower 2690664 - 2927
2690659 - Legacy XL 2690665 - 2027
2690660 - Legacy XL 2690666 - 2027
2690661 - Legacy XL
2690662 - 2927

Not for
Reproduction

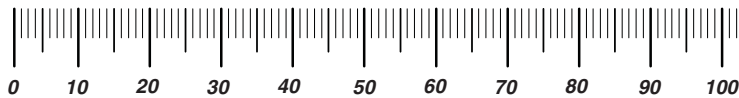
Not for
Reproduction

Not for
Reproduction

Hardware Identification & Torque Specifications

Torque Specification Chart								
FOR STANDARD METRIC MACHINE HARDWARE (Tolerance ± 20%)								
Property Class	5.6		8.8		10.9		12.9	
	Class 5.6		Class 8.8		Class 10.9		Class 12.9	
Size Of Hardware	in/lbs		in/lbs		in/lbs		in/lbs	
	ft/lbs	Nm.	ft/lbs	Nm.	ft/lbs	Nm.	ft/lbs	Nm.
M3	5.88	.56	13.44	1.28	19.2	1.80	22.92	2.15
M4	13.44	1.28	30.72	2.90	43.44	4.10	52.56	4.95
M5	26.4	2.50	60.96	5.75	5.97	8.10	7.15	9.7
M6	44.64	4.3	7.3	9.9	10.3	14	12.1	16.5
M7	5.2	7.1	12.1	16.5	16.9	23	19.9	27
M8	7.7	10.5	17.7	24	25	34	29	40
M10	15	21	35	48	50	67	59	81
M12	26	36	61	83	86.2	117	103	140
M14	42	58	101	132	136	185	162	220
M16	64	88	147	200	210	285	250	340
M18	89	121	202	275	287	390	346	470
M20	126	171	290	390	405	550	486	660
M22	169	230	390	530	559	745	656	890
M24	217	295	497	375	708	960	840	1140
M27	320	435	733	995	1032	1400	1239	1680
M30	435	590	995	1350	1401	1900	1681	2280
M33	590	800	1349	1830	1902	2580	2278	3090
M36	759	1030	1740	2360	2441	3310	2935	3980
M39	988	1340	2249	3050	3163	4290	3798	5150

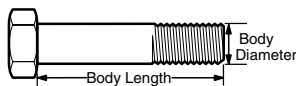
The guides and ruler furnished below are designed to help you select the appropriate hardware.



Nut, M8

Thread Diameter (mm)
Inside Diameter (in)
Threads per inch

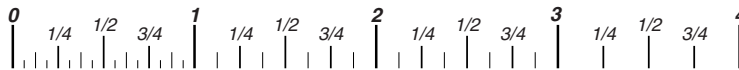
Nut, 1/2-16



Screw, M8- 1.25 x 25

Thread Diameter (mm)
Body Diameter
Distance between threads (mm)
Threads per inch
Body Length (mm)
Body Length (in)

Screw, 1/2- 16 x 2



Standard Hardware Sizing

When a washer or nut is identified as **1/2"** (M8), this is the *Nominal size*, meaning the *inside diameter* is 1/2 inch (8mm metric thread diameter); if a second number is present it represents the *threads per inch* (distance between threads).

When bolt or capscrew is identified as **1/2 - 16 x 2"** (M8 - 1.25 x 50), this means the *Nominal size*, or body diameter is 1/2 inch (8mm metric thread diameter), the second number, 16, represents the *threads per inch*, (1.25 thread diameter). The final number is the body length of the bolt or screw, 2 inches (50mm).

Torque Specification Chart						
FOR STANDARD MACHINE HARDWARE (Tolerance ± 20%)						
Hardware Grade	No Marks		SAE Grade 5		SAE Grade 8	
	SAE Grade 2		SAE Grade 5		SAE Grade 8	
Size Of Hardware	in/lbs		in/lbs		in/lbs	
	ft/lbs	Nm.	ft/lbs	Nm.	ft/lbs	Nm.
8-32	19	2.1	30	3.4	41	4.6
8-36	20	2.3	31	3.5	43	4.9
10-24	27	3.1	43	4.9	60	6.8
10-32	31	3.5	49	5.5	68	7.7
1/4-20	66	7.6	8	10.9	12	16.3
1/4-28	76	8.6	10	13.6	14	19.0
5/16-18	11	15.0	17	23.1	25	34.0
5/16-24	12	16.3	19	25.8	29	34.0
3/8-16	20	27.2	30	40.8	45	61.2
3/8-24	23	31.3	35	47.6	50	68.0
7/16-14	30	40.8	50	68.0	70	95.2
7/16-20	35	47.6	55	74.8	80	108.8
1/2-13	50	68.0	75	102.0	110	149.6
1/2-20	55	74.8	90	122.4	120	163.2
9/16-12	65	88.4	110	149.6	150	204.0
9/16-18	75	102.0	120	163.2	170	231.2
5/8-11	90	122.4	150	204.0	220	299.2
5/8-18	100	136	180	244.8	240	326.4
3/4-10	160	217.6	260	353.6	386	525.0
3/4-16	180	244.8	300	408.0	420	571.2
7/8-9	140	190.4	400	544.0	600	816.0
7/8-14	155	210.8	440	598.4	660	897.6
1-8	220	299.2	580	788.8	900	1,244.0
1-12	240	326.4	640	870.4	1,000	1,360.0

NOTES

- These torque values are to be used for all hardware excluding: locknuts, self-tapping screws, thread forming screws, sheet metal screws and socket head setscrews.
- Recommended seating torque values for locknuts:
 - for prevailing torque locknuts - use 65% of grade 5 torques.
 - for flange whizlock nuts and screws - use 135% of grade 5 torques.
- Unless otherwise noted on assembly drawings, all torque values must meet this specification.

Common Hardware Types

Hex Head Capscrew



Washer

Carriage Bolt



Lockwasher



Hex Nut

Wrench & Fastener Size Guide

1/4" Bolt or Nut Wrench—7/16"	5/16" Bolt or Nut Wrench—1/2"	3/8" Bolt or Nut Wrench—9/16"	7/16" Bolt or Nut Wrench (Bolt)—5/8" Wrench (Nut)—11/16"	1/2" Bolt or Nut Wrench—3/4"
M6 Bolt or Nut Wrench—10mm	M8 Bolt or Nut Wrench—13mm	M10 Bolt or Nut Wrench—17mm	M12 Bolt or Nut Wrench—19mm	M14 Bolt or Nut Wrench—22mm

Not for
Reproduction

**IT IS THE POLICY OF BRIGGS & STRATTON CORP. TO IMPROVE ITS PRODUCTS
WHENEVER IT IS POSSIBLE AND PRACTICAL TO DO SO. WE RESERVE THE RIGHT TO
MAKE CHANGES OR ADD IMPROVEMENTS AT ANY TIME WITHOUT INCURRING ANY
OBLIGATION TO MAKE SUCH CHANGES ON PRODUCTS.**

Briggs & Stratton Yard Power Products Group

3515 N. 124 Street / PO Box 702
Wauwatosa, WI 53222 USA

www.simplicitymfg.com

© Copyright 2010 by Briggs & Stratton Corporation
Milwaukee, WI, USA. All rights reserved