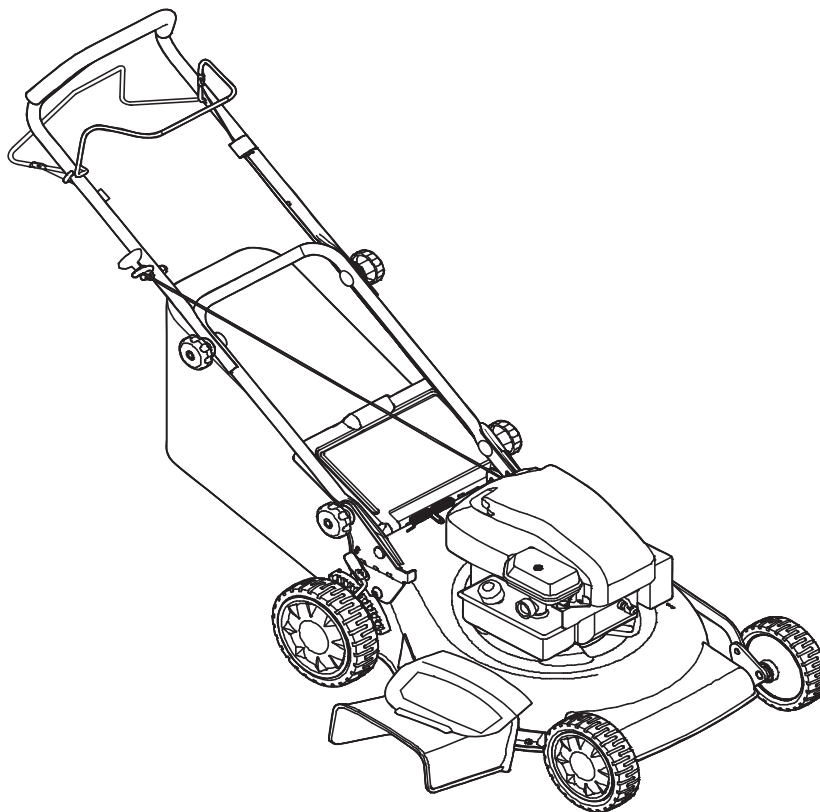




PARTS LIST



Models

| Mfg. No. | Description |
|----------|--|
| 881243 | MXTH675, 6.75TP 19" Self Propelled Mulching Mower, CE (2011) |

Manual Part No. 1751782
Revision A
Rev. Date: 6/20/2011

Not for
Reproduction

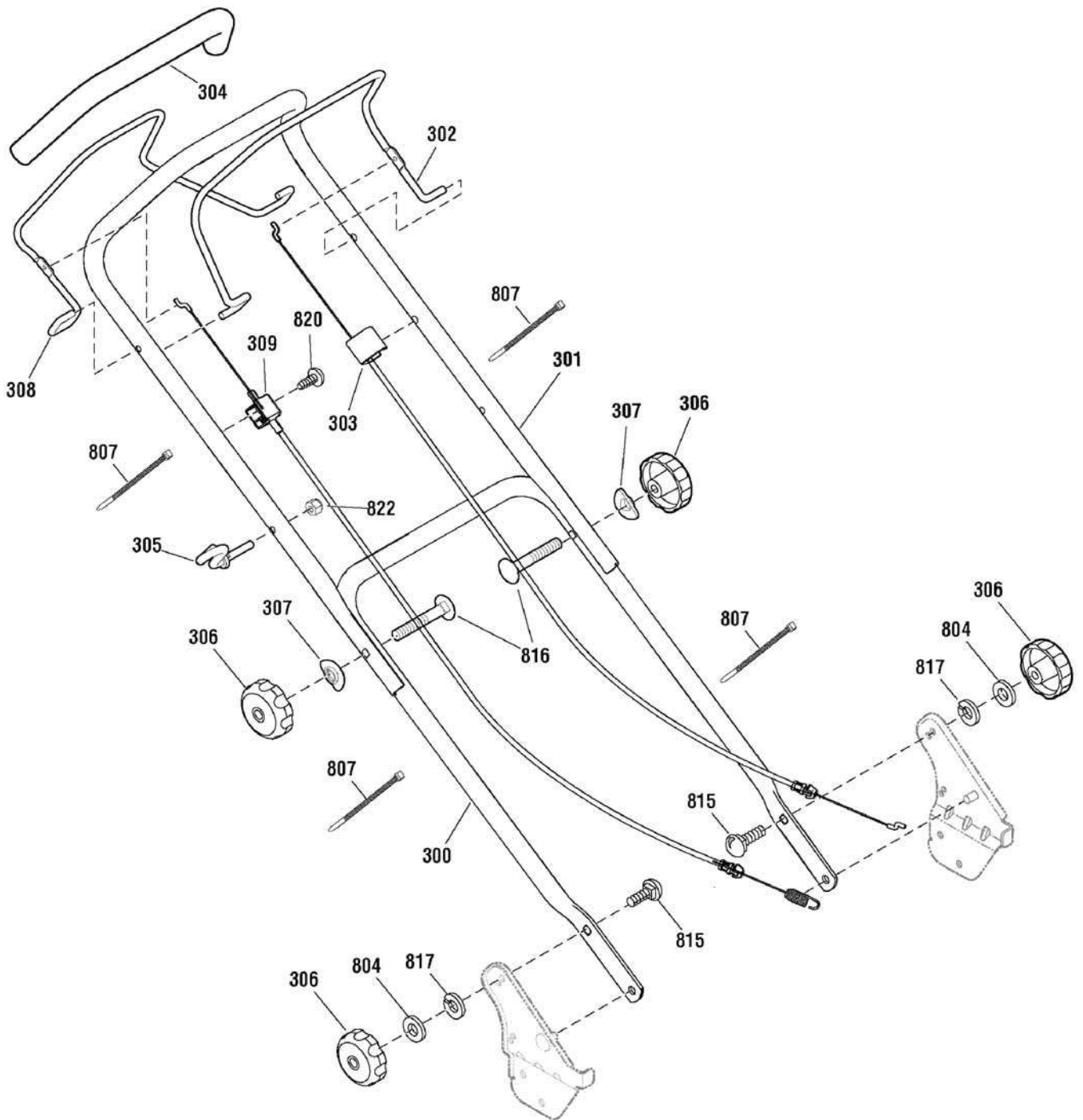
| PRODUCT COMPONENTS | PAGES |
|---|--------------------------|
| Handle Assembly | 4 |
| Deck & Engine Group | 6 |
| Drive Group | 10 |
| Torque Specification Chart | Inside Back Cover |

Not for
Reproduction

Handle Assembly

881243ha

NOTE: Unless noted otherwise,
use the standard hardware torque
specification chart.



The above parts group applies to the following Mfg. Nos.:

881243 - MXTH675

Handle Assembly

| REF NO | PART NO. | QTY. | DESCRIPTION |
|--------|-----------|------|---------------------------------|
| 300 | 880571AYP | 1 | HANDLE, Lower |
| 301 | 880210AYP | 1 | HANDLE, Upper |
| 302 | 880476ZYP | 1 | LEVER, Engine Stop |
| 303 | 880639YP | 1 | CABLE, Engine Stop |
| 304 | 880591YP | 1 | TUBING, Foam |
| 305 | 672510MA | 1 | GUIDE, Rope, 1/4-20 |
| 306 | 881056YP | 4 | KNOB, 5/16-18 |
| 307 | 880615YP | 1 | WASHER, Formed |
| 308 | 881061ZYP | 1 | LEVER, Drive |
| 309 | 880297YP | 1 | CABLE ASSEMBLY, Drive |
| 804 | 880607YP | 1 | WASHER, 5/8 |
| 807 | 880029YP | 1 | CABLE TIE |
| 815 | 880576YP | 1 | BOLT, Carriage, 5/16-18 x 1-1/8 |
| 816 | 002X77MA | 1 | BOLT, Carriage, 5/16-18 x 2 |
| 817 | 22129GS | 1 | WASHER, Lock |
| 820 | 26X256MA | 1 | SCREW, Tap, #10 x 1-1/4 |
| 822 | 15X116MA | 1 | NUT, Hex, 1/4-20 |

Not for
Reproduction

Footnotes

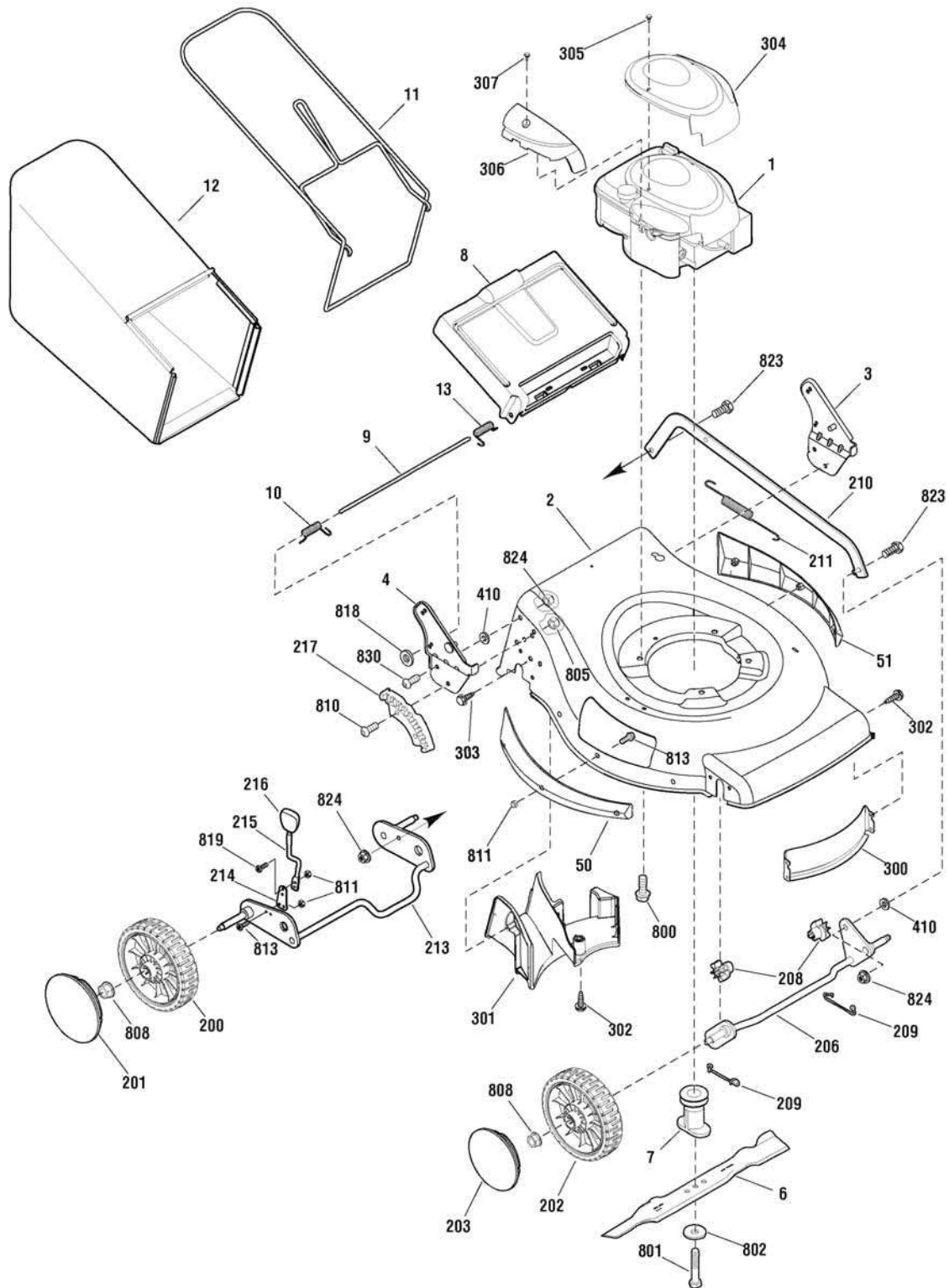
The above parts group applies to the following Mfg. Nos.:

881243 - MXTH675

Deck & Engine Group

881243dk

NOTE: Unless noted otherwise,
use the standard hardware torque
specification chart.



The above parts group applies to the following Mfg. Nos.:
881243 - MXTH675

Deck & Engine Group

| REF NO | PART NO. | QTY. | DESCRIPTION |
|--------|----------------|------|---|
| 1 | 12T020-0276-B1 | 1 | * ENGINE, 6.75GT Briggs & Stratton (Engine Model: 126T02-0276-B1) |
| 2 | ----- | 1 | * MOWER HOUSING (Includes Ref. Nos. 300 & 302) |
| 3 | 880951AYP | 1 | BRACKET ASSEMBLY, Left Handle |
| 4 | 880950AYP | 1 | BRACKET ASSEMBLY, Right Handle |
| 6 | 880638YP | 1 | BLADE, 19" |
| 7 | 880567YP | 1 | BLADE ADAPTER ASSEMBLY |
| 8 | 880671YP | 1 | DOOR, Rear |
| 9 | 880214YP | 1 | ROD, Rear Door |
| 10 | 880942YP | 1 | SPRING, Torsion Rear Door, Right |
| 11 | 880963ZYP | 1 | FRAME ASSEMBLY |
| 12 | 880965YP | 1 | BAG ASSEMBLY |
| 13 | 880943YP | 1 | SPRING, Torsion Rear Door, Right |
| 50 | 881112YP | 1 | SIDE GUARD, Right |
| 51 | 881109YP | 1 | SIDE GUARD, Left |
| 200 | 880194YP | 2 | WHEEL, Rear, Complete (Includes Bearing) |
| 201 | 880699YP | 2 | HUBCAP, Rear |
| 202 | 880703YP | 2 | WHEEL, Front |
| 203 | 880698YP | 2 | HUBCAP, Front |
| 206 | 880053YP | 1 | CROSSBAR ASSEMBLY, Front |
| 208 | 880050YP | 1 | BUSHING, Front Crossbar |
| 209 | 881163YP | 1 | SPRING, Clip Crossbar |
| 210 | 880791BJYP | 1 | LINK, Single Lever, High Wheel |
| 211 | 880052YP | 1 | SPRING, Extension |
| 213 | 880829YP | 1 | REAR CROSSBAR |
| 214 | 880642YP | 1 | SPRING, Adjuster |
| 215 | 880540YP | 1 | LEVER, Height Adjustment |
| 216 | 881059YP | 1 | KNOB, Adjuster |
| 217 | 880960YP | 1 | BRACKET, Height Adjuster |
| 300 | 880784BIYP | 1 | BAFFLE, Front |
| 301 | 880785YP | 1 | BAFFLE, Rear |
| 302 | 880664YP | 5 | SCREW, Pan Head, Taptite, 1/4-20 x 1/2 |
| 303 | 880804YP | 5 | SCREW, Pan Head, Taptite, 1/4-15 x 5/8 |
| 304 | 791511YP | 1 | COVER, Static |
| 305 | 691138 | 2 | SCREW, Hex Washer Head |
| 306 | 792418 | 1 | COVER, Control |
| 307 | 698589 | 1 | SCREW, Pan Head |
| 410 | 880607YP | 1 | WASHER, Flat, .34 |
| 800 | 7090324SM | 1 | SCREW, Hex Head, 3/8-16 x 1 |
| 801 | 880034YP | 1 | BOLT, Blade, 3/8-24 x 2 |
| 802 | 1101989MA | 1 | WASHER, Belleville |
| 805 | 880020YP | 1 | NUT, Nylock, M8 x 1-1/4 |

Footnotes

(Not a serviceable part)

NOTE: * Purchase engine parts from engine manufacturer dealer.

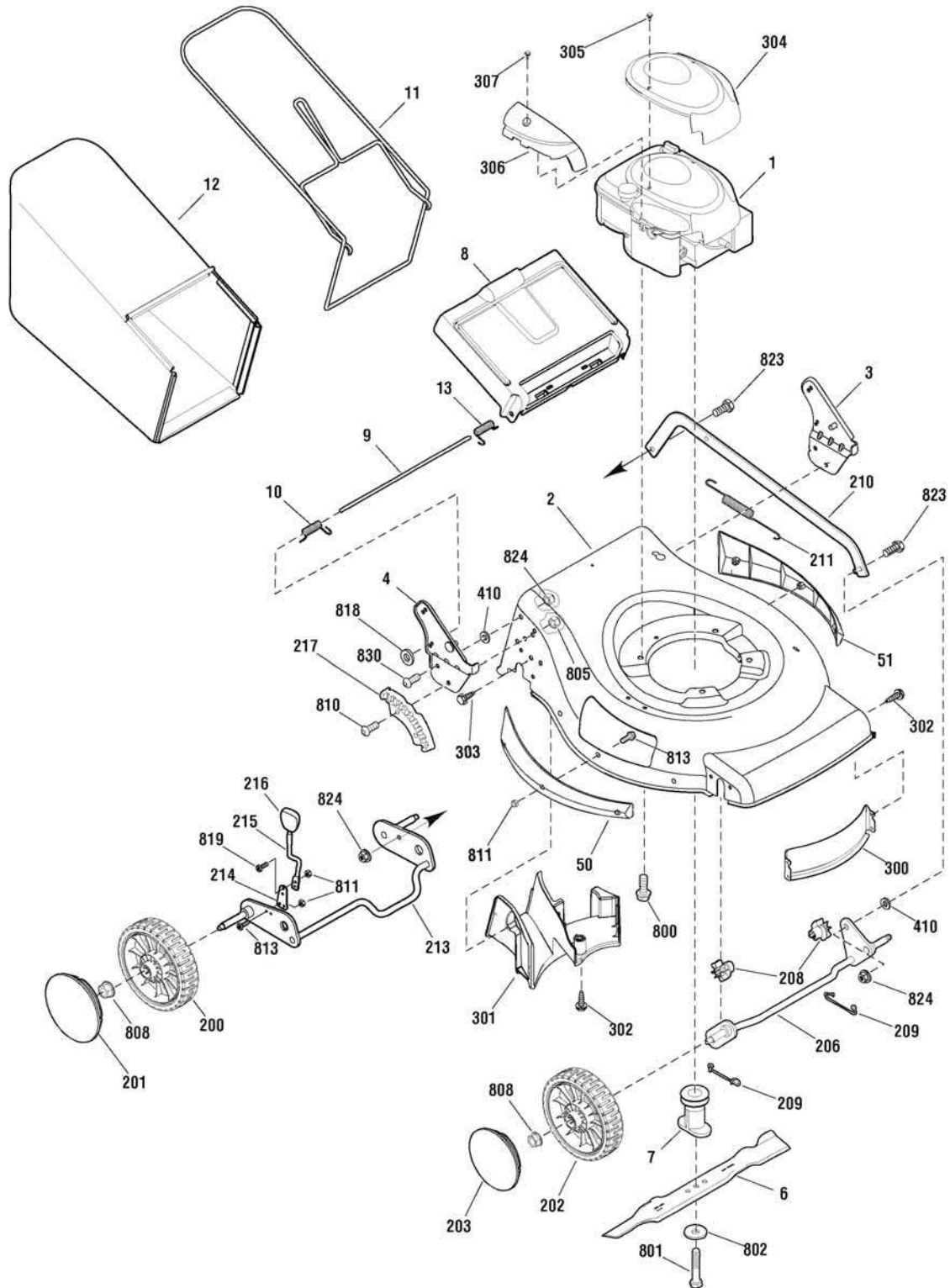
The above parts group applies to the following Mfg. Nos.:

881243 - MXTH675

Deck & Engine Group

881243dk

NOTE: Unless noted otherwise,
use the standard hardware torque
specification chart.



The above parts group applies to the following Mfg. Nos.:
881243 - MXTH675

Deck & Engine Group

| REF NO | PART NO. | QTY. | DESCRIPTION |
|--------|-----------|------|------------------------------------|
| 808 | 015X84MA | 1 | NUT, Flange, 3/8-16 |
| 810 | 880323YP | 1 | BOLT, Hex Key Head |
| 811 | 880428YP | 1 | NUT, Nylock |
| 813 | 880339YP | 1 | SCREW, Torx Head, M5 x .8 x 14mm |
| 818 | 7091020YP | 2 | PUSHNUT, 1/4 |
| 819 | 880577YP | 1 | SCREW, Torx Head, M5 x .8 x 12.5mm |
| 823 | 880651YP | 1 | BOLT, Shoulder, 5/16-18 x 1 |
| 824 | 015X88MA | 6 | Nut, Flange, 5/16-18 |
| 830 | 48901MA | 1 | CAPSCREW, 5/16-18 x 3/4 |
| 1000 | 881412YP | 1 | DECAL KIT |

Not for
Reproduction

Footnotes

(Not a serviceable part)

NOTE: * Purchase engine parts from engine manufacturer dealer.

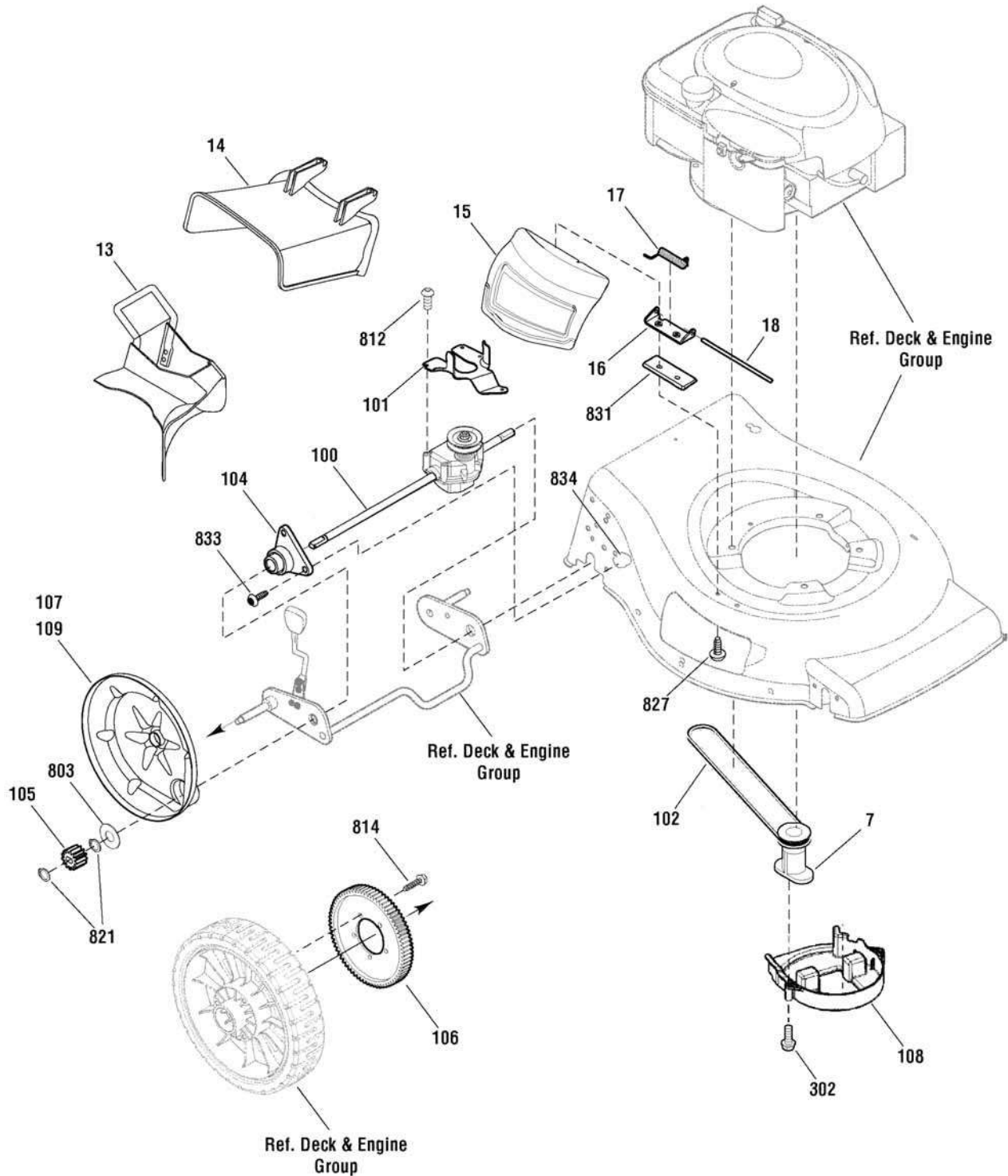
The above parts group applies to the following Mfg. Nos.:

881243 - MXTH675

Drive Group

881243dr

NOTE: Unless noted otherwise,
use the standard hardware torque
specification chart.



The above parts group applies to the following Mfg. Nos.:

881243 - MXTH675

Drive Group

| REF NO | PART NO. | QTY. | DESCRIPTION |
|--------|----------|------|--|
| 7 | 880567YP | 1 | BLADE ADAPTER ASSEMBLY |
| 13 | 880909YP | 1 | MULCH PLUG |
| 14 | 880579YP | 1 | CHUTE DEFLECTOR |
| 15 | 880580YP | 1 | MULCH COVER |
| 16 | 880584YP | 1 | BRACKET, Chute Deflector |
| 17 | 880582YP | 1 | SPRING, Chute Deflector |
| 18 | 880581YP | 1 | ROD, Chute Deflector |
| 100 | 880341YP | 1 | TRANSMISSION |
| 101 | 880282YP | 1 | BELT GUIDE, Transmission |
| 102 | 880268YP | 1 | V-BELT |
| 104 | 880787YP | 1 | SLEEVE ASSEMBLY, Rear Axle |
| 105 | 880226YP | 1 | GEAR, Pinion |
| 106 | 880225YP | 1 | GEAR, Drive |
| 107 | 880230YP | 1 | DUST COVER, RH |
| 108 | 880796YP | 1 | BELT GUIDE |
| 109 | 880640YP | 1 | DUST COVER, LH |
| 302 | 880664YP | 2 | SCREW, Pan Head, Taptite, 1/4-15 x 5/8 |
| 803 | 880324YP | 1 | WASHER, Thrust |
| 812 | 880760YP | 1 | SCREW, #10 x 1 |
| 814 | 26X296MA | 6 | SCREW, 1/4-15 x 3/4 |
| 821 | 880269YP | 1 | RING, External Retaining |
| 827 | 880664YP | 2 | SCREW, 1/4-20 x 1/2 |
| 831 | 880583YP | 1 | SPACER |
| 833 | 880845YP | 1 | SCREW, Torx, 1/4-20 x 5/8 |
| 834 | 880859YP | 1 | NUT, Flange Lock, 1/4-20 |

Not for
Reproduction

Footnotes

The above parts group applies to the following Mfg. Nos.:

881243 - MXTH675

Not for
Reproduction

Not for
Reproduction

Not for
Reproduction

Hardware Identification & Torque Specifications

| Torque Specification Chart | | | | | | | | |
|--|-----------|------|-----------|------|------------|------|------------|------|
| FOR STANDARD METRIC MACHINE HARDWARE (Tolerance ± 20%) | | | | | | | | |
| Property Class | 5.6 | | 8.8 | | 10.9 | | 12.9 | |
| | Class 5.6 | | Class 8.8 | | Class 10.9 | | Class 12.9 | |
| Size Of Hardware | in/lbs | | in/lbs | | in/lbs | | in/lbs | |
| | ft/lbs | Nm. | ft/lbs | Nm. | ft/lbs | Nm. | ft/lbs | Nm. |
| M3 | 5.88 | .56 | 13.44 | 1.28 | 19.2 | 1.80 | 22.92 | 2.15 |
| M4 | 13.44 | 1.28 | 30.72 | 2.90 | 43.44 | 4.10 | 52.56 | 4.95 |
| M5 | 26.4 | 2.50 | 60.96 | 5.75 | 5.97 | 8.10 | 7.15 | 9.7 |
| M6 | 44.64 | 4.3 | 7.3 | 9.9 | 10.3 | 14 | 12.1 | 16.5 |
| M7 | 5.2 | 7.1 | 12.1 | 16.5 | 16.9 | 23 | 19.9 | 27 |
| M8 | 7.7 | 10.5 | 17.7 | 24 | 25 | 34 | 29 | 40 |
| M10 | 15 | 21 | 35 | 48 | 50 | 67 | 59 | 81 |
| M12 | 26 | 36 | 61 | 83 | 86.2 | 117 | 103 | 140 |
| M14 | 42 | 58 | 101 | 132 | 136 | 185 | 162 | 220 |
| M16 | 64 | 88 | 147 | 200 | 210 | 285 | 250 | 340 |
| M18 | 89 | 121 | 202 | 275 | 287 | 390 | 346 | 470 |
| M20 | 126 | 171 | 290 | 390 | 405 | 550 | 486 | 660 |
| M22 | 169 | 230 | 390 | 530 | 559 | 745 | 656 | 890 |
| M24 | 217 | 295 | 497 | 375 | 708 | 960 | 840 | 1140 |
| M27 | 320 | 435 | 733 | 995 | 1032 | 1400 | 1239 | 1680 |
| M30 | 435 | 590 | 995 | 1350 | 1401 | 1900 | 1681 | 2280 |
| M33 | 590 | 800 | 1349 | 1830 | 1902 | 2580 | 2278 | 3090 |
| M36 | 759 | 1030 | 1740 | 2360 | 2441 | 3310 | 2935 | 3980 |
| M39 | 988 | 1340 | 2249 | 3050 | 3163 | 4290 | 3798 | 5150 |

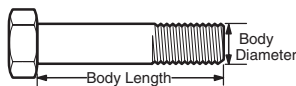
The guides and ruler furnished below are designed to help you select the appropriate hardware.



Nut, M8

Thread Diameter (mm)
Inside Diameter (in)
Threads per inch

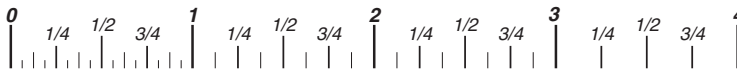
Nut, 1/2-16



Screw, M8- 1.25 x 25

Thread Diameter (mm)
Body Diameter
Distance between threads (mm)
Threads per inch
Body Length (mm)
Body Length (in)

Screw, 1/2- 16 x 2



Standard Hardware Sizing

When a washer or nut is identified as 1/2" (M8), this is the *Nominal size*, meaning the *inside diameter* is 1/2 inch (8mm metric thread diameter); if a second number is present it represents the *threads per inch* (distance between threads).

When bolt or capscrew is identified as 1/2 - 16 x 2" (M8 - 1.25 x 50), this means the *Nominal size*, or body diameter is 1/2 inch (8mm metric thread diameter), the second number, 16, represents the *threads per inch*, (1.25 thread diameter). The final number is the body length of the bolt or screw, 2 inches (50mm).

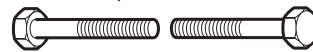
| Torque Specification Chart | | | | | | |
|---|-------------|-------|-------------|-------|-------------|---------|
| FOR STANDARD MACHINE HARDWARE (Tolerance ± 20%) | | | | | | |
| Hardware Grade | No Marks | | SAE Grade 5 | | SAE Grade 8 | |
| | SAE Grade 2 | | SAE Grade 5 | | SAE Grade 8 | |
| Size Of Hardware | in/lbs | | in/lbs | | in/lbs | |
| | ft/lbs | Nm. | ft/lbs | Nm. | ft/lbs | Nm. |
| 8-32 | 19 | 2.1 | 30 | 3.4 | 41 | 4.6 |
| 8-36 | 20 | 2.3 | 31 | 3.5 | 43 | 4.9 |
| 10-24 | 27 | 3.1 | 43 | 4.9 | 60 | 6.8 |
| 10-32 | 31 | 3.5 | 49 | 5.5 | 68 | 7.7 |
| 1/4-20 | 66 | 7.6 | 8 | 10.9 | 12 | 16.3 |
| 1/4-28 | 76 | 8.6 | 10 | 13.6 | 14 | 19.0 |
| 5/16-18 | 11 | 15.0 | 17 | 23.1 | 25 | 34.0 |
| 5/16-24 | 12 | 16.3 | 19 | 25.8 | 29 | 34.0 |
| 3/8-16 | 20 | 27.2 | 30 | 40.8 | 45 | 61.2 |
| 3/8-24 | 23 | 31.3 | 35 | 47.6 | 50 | 68.0 |
| 7/16-14 | 30 | 40.8 | 50 | 68.0 | 70 | 95.2 |
| 7/16-20 | 35 | 47.6 | 55 | 74.8 | 80 | 108.8 |
| 1/2-13 | 50 | 68.0 | 75 | 102.0 | 110 | 149.6 |
| 1/2-20 | 55 | 74.8 | 90 | 122.4 | 120 | 163.2 |
| 9/16-12 | 65 | 88.4 | 110 | 149.6 | 150 | 204.0 |
| 9/16-18 | 75 | 102.0 | 120 | 163.2 | 170 | 231.2 |
| 5/8-11 | 90 | 122.4 | 150 | 204.0 | 220 | 299.2 |
| 5/8-18 | 100 | 136 | 180 | 244.8 | 240 | 326.4 |
| 3/4-10 | 160 | 217.6 | 260 | 353.6 | 386 | 525.0 |
| 3/4-16 | 180 | 244.8 | 300 | 408.0 | 420 | 571.2 |
| 7/8-9 | 140 | 190.4 | 400 | 544.0 | 600 | 816.0 |
| 7/8-14 | 155 | 210.8 | 440 | 598.4 | 660 | 897.6 |
| 1-8 | 220 | 299.2 | 580 | 788.8 | 900 | 1,244.0 |
| 1-12 | 240 | 326.4 | 640 | 870.4 | 1,000 | 1,360.0 |

NOTES

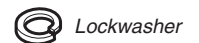
- These torque values are to be used for all hardware excluding: locknuts, self-tapping screws, thread forming screws, sheet metal screws and socket head setscrews.
- Recommended seating torque values for locknuts:
 - for prevailing torque locknuts - use 65% of grade 5 torques.
 - for flange whizlock nuts and screws - use 135% of grade 5 torques.
- Unless otherwise noted on assembly drawings, all torque values must meet this specification.

Common Hardware Types

Hex Head Capscrew



Washer



Lockwasher

Carriage Bolt



Hex Nut

Wrench & Fastener Size Guide

| | | | | |
|----------------------------------|----------------------------------|----------------------------------|--|---------------------------------|
| | | | | |
| 1/4" Bolt or Nut Wrench—7/16" | 5/16" Bolt or Nut Wrench—1/2" | 3/8" Bolt or Nut Wrench—9/16" | 7/16" Bolt or Nut Wrench (Bolt)—5/8" Wrench (Nut)—11/16" | 1/2" Bolt or Nut Wrench—3/4" |
| M6 Bolt or Nut Wrench—10mm | M8 Bolt or Nut Wrench—13mm | M10 Bolt or Nut Wrench—17mm | M12 Bolt or Nut Wrench—19mm | M14 Bolt or Nut Wrench—22mm |

Not for
Reproduction

**IT IS THE POLICY OF BRIGGS & STRATTON CORP. TO IMPROVE ITS PRODUCTS
WHENEVER IT IS POSSIBLE AND PRACTICAL TO DO SO. WE RESERVE THE RIGHT TO
MAKE CHANGES OR ADD IMPROVEMENTS AT ANY TIME WITHOUT INCURRING ANY
OBLIGATION TO MAKE SUCH CHANGES ON PRODUCTS.**

Briggs & Stratton Power Products Group

12301 W. Wirth Street
Wauwatosa, WI, 53222 USA

www.murray.com

© Copyright 2011 by Briggs & Stratton Corporation
Milwaukee, WI, USA. All rights reserved