

REPAIR PARTS MANUAL
MODEL NO. 254601
Lawn Tractor



435139

HOW TO USE THIS MANUAL

This manual is designed to provide the customer with a means to identify the parts on his/her tractor when ordering repair parts. The illustrations may or may not represent the actual assemblies; therefore, it is not recommended to use this manual as a guide to assemble or disassemble the tractor. Some hardware and parts are drawn larger in order to more readily identify them.

Each tractor has its own model number.

The model number for your tractor can be found on the fender under the seat.

When ordering parts, always give the following information:

- Product - "Tractor"
- Model Number - "254601"
- Part Number
- Part Description

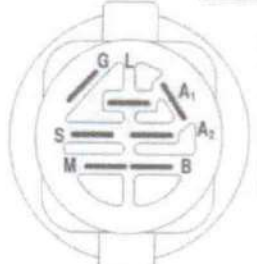
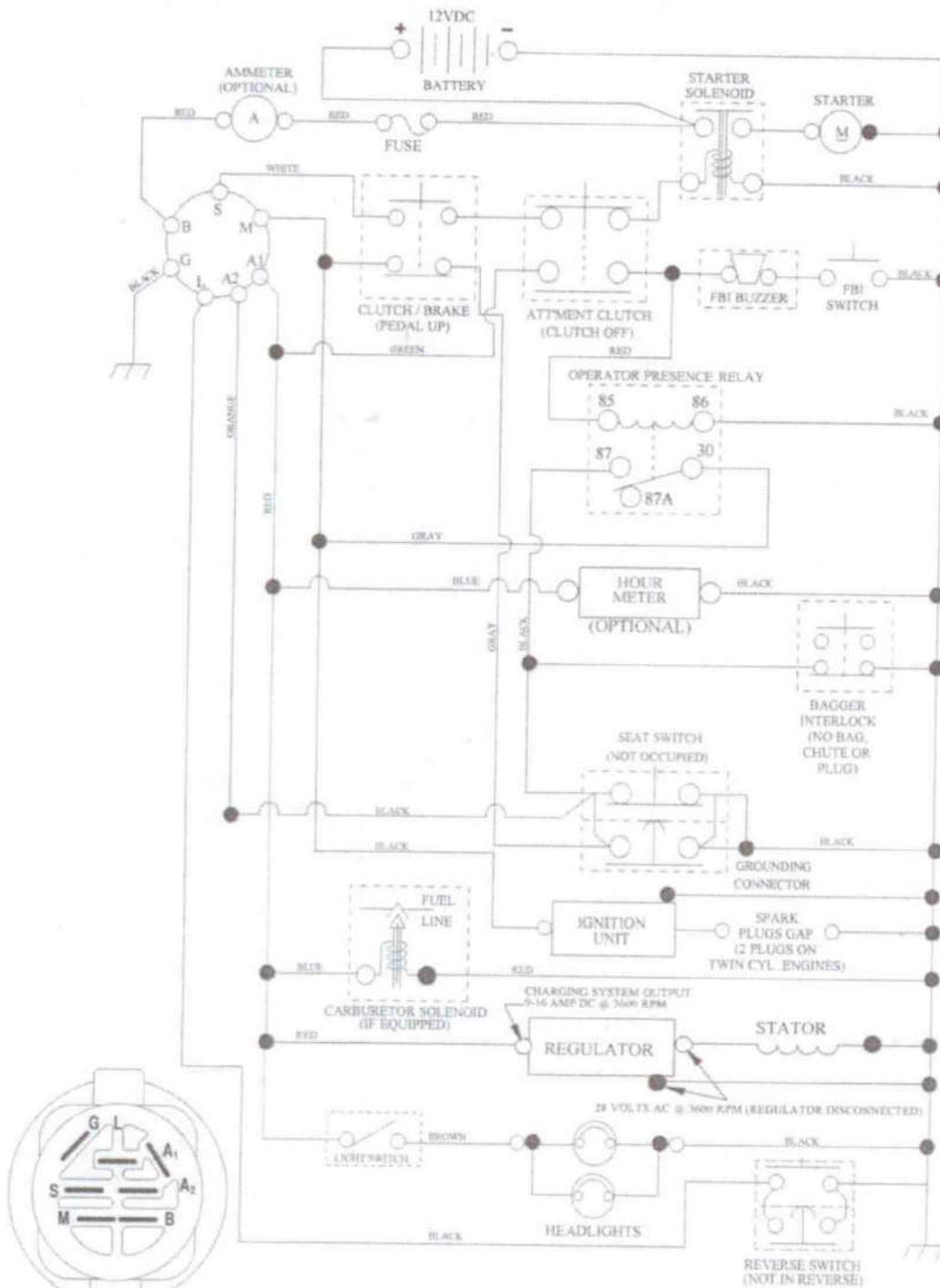
TABLE OF CONTENTS

SCHEMATIC	3
ELECTRICAL.....	4-5
CHASSIS	6-7
DRIVE.....	8-9
ENGINE.....	10-11
STEERING	12-13
SEAT	14
DECALS.....	15
MOWER DECK	16-17
MOWER LIFT.....	18
BAGGER.....	19
TRANSAXLE.....	20-21
ENGINE BREAKDOWN.....	22-25
WARRANTY.....	BACK COVER

SCHEMATIC

SCH07

TRACTOR - MODEL NO. 917.254601



IGNITION SWITCH

POSITION	CIRCUIT	"MAKE"
OFF	M+G+A1	
RUN/OVERRIDE	B+A1	
RUN	B+A1	L+A2
START	B+S+A1	

WIRING INSULATED CLIPS
 NOTE: IF WIRING INSULATED CLIPS WERE REMOVED FOR SERVICING OF UNIT, THEY SHOULD BE RE-INSTALLED TO PROPERLY SECURE YOUR WIRING.

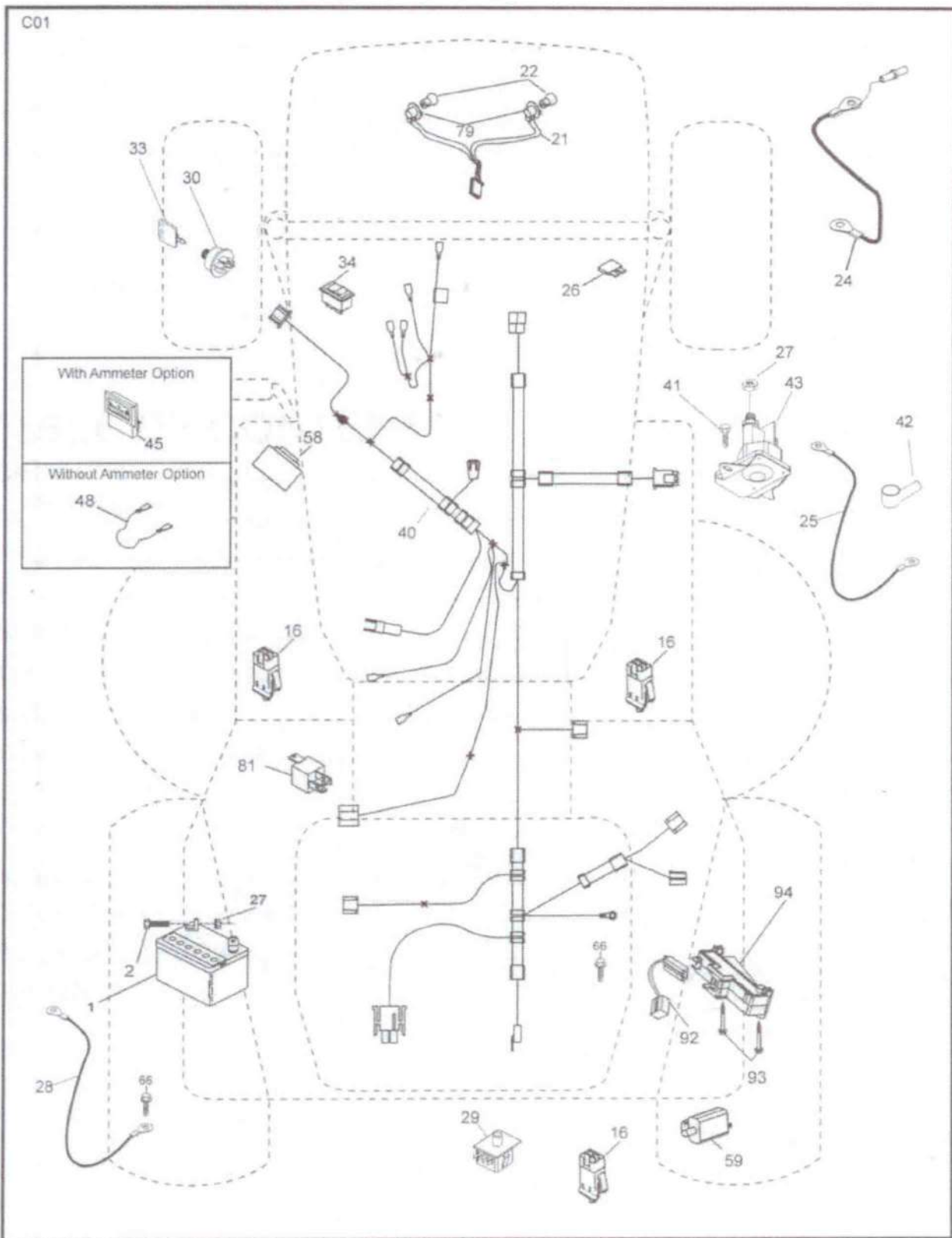
REMOVABLE CONNECTIONS
 NON-REMOVABLE CONNECTIONS



TRACTOR- -MODEL NO. 917.254601

ELECTRICAL

C01



ELECTRICAL

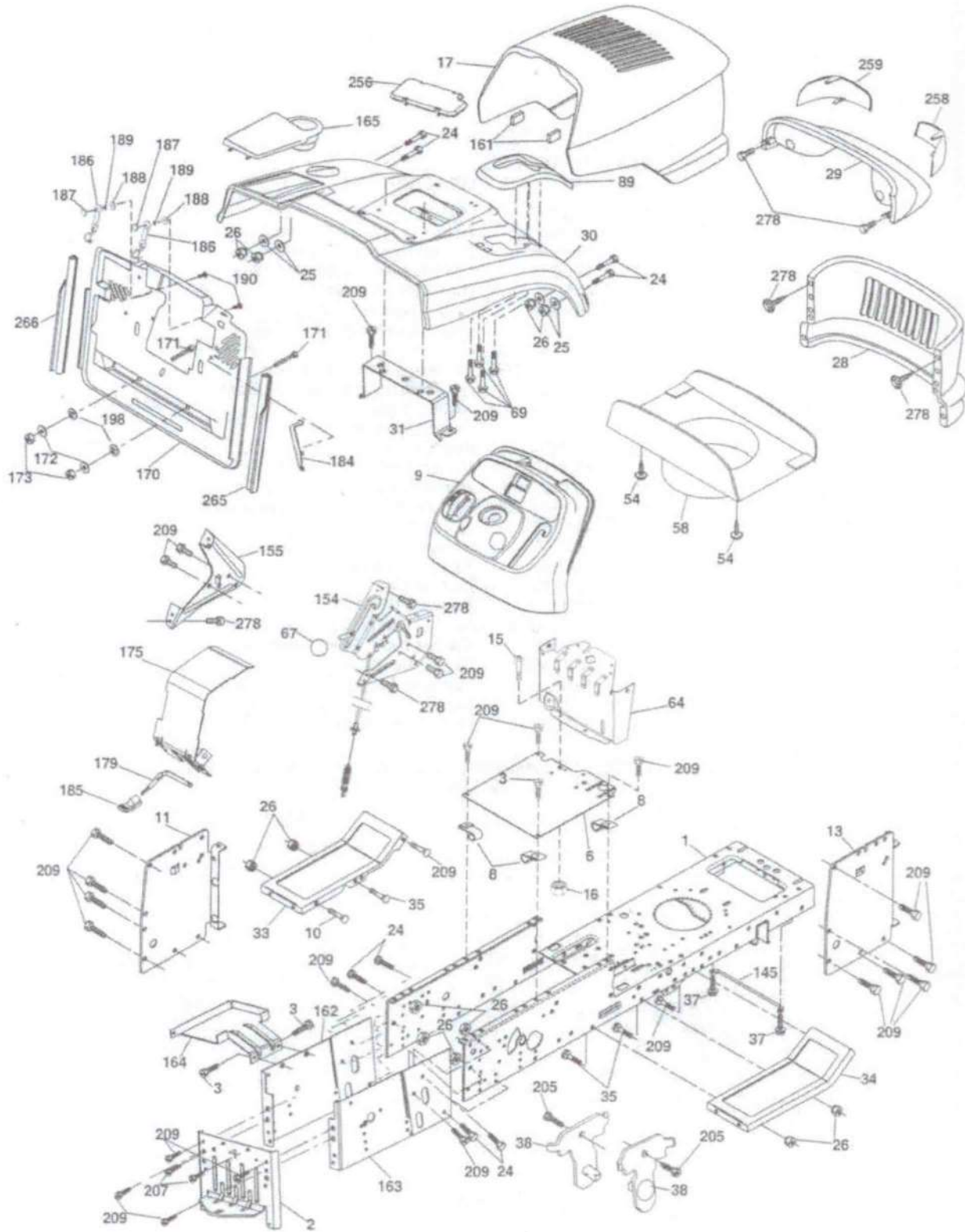
TRACTOR- -MODEL NO. 917.254601

KEY NO.	PART NO.	DESCRIPTION
1	163465	Battery
2	74760412	Bolt Hex Hd 1/4-20 unc x 3/4
16	176138	Switch Interlock Push-In
21	175688	Harness Asm Light w/4152J
22	4152J	Bulb Light #1156
24	165987	Cable Battery Crd 56" Red
25	421299	Cable Starter 6 Ga. 11" Red
26	175158	Fuse
27	STD541425	Nut Keps Hex 1/4-20 unc
28	127725X	Cable Ground 6 Ga. 18" Black
29	192749	Switch Seat
30	193350	Switch Ignition
33	411934	Key/Chain
34	110712X	Switch Light
40	197436	Harness Ign
41	71110408	Bolt Flk Fin Hex 1/4-20 unc x 1/2
42	131563	Cover Terminal Red
43	192507	Solenoid
48	140844	Adapter Ammeter
58	169419	Buzzer Crd
59	180379	Switch FBI CRD
66	17490608	Screw Thdrol 3/8-16 x 1/2 Ty-Tt
79	175242	Socket Asm. Bulb Twistlock
81	109748X	Relay Asm
92	196615	Harness Pigtail
93	192540	Screw 10-14 x 2.0
94	191834	Module Reverse

NOTE: All component dimensions given in U.S. inches.
1 inch = 25.4 mm.

TRACTOR- -MODEL NO. 917.254601

CHASSIS AND ENCLOSURES



Chassis-CRD_STEALTH SRS_1

TRACTOR- -MODEL NO. 917.254601

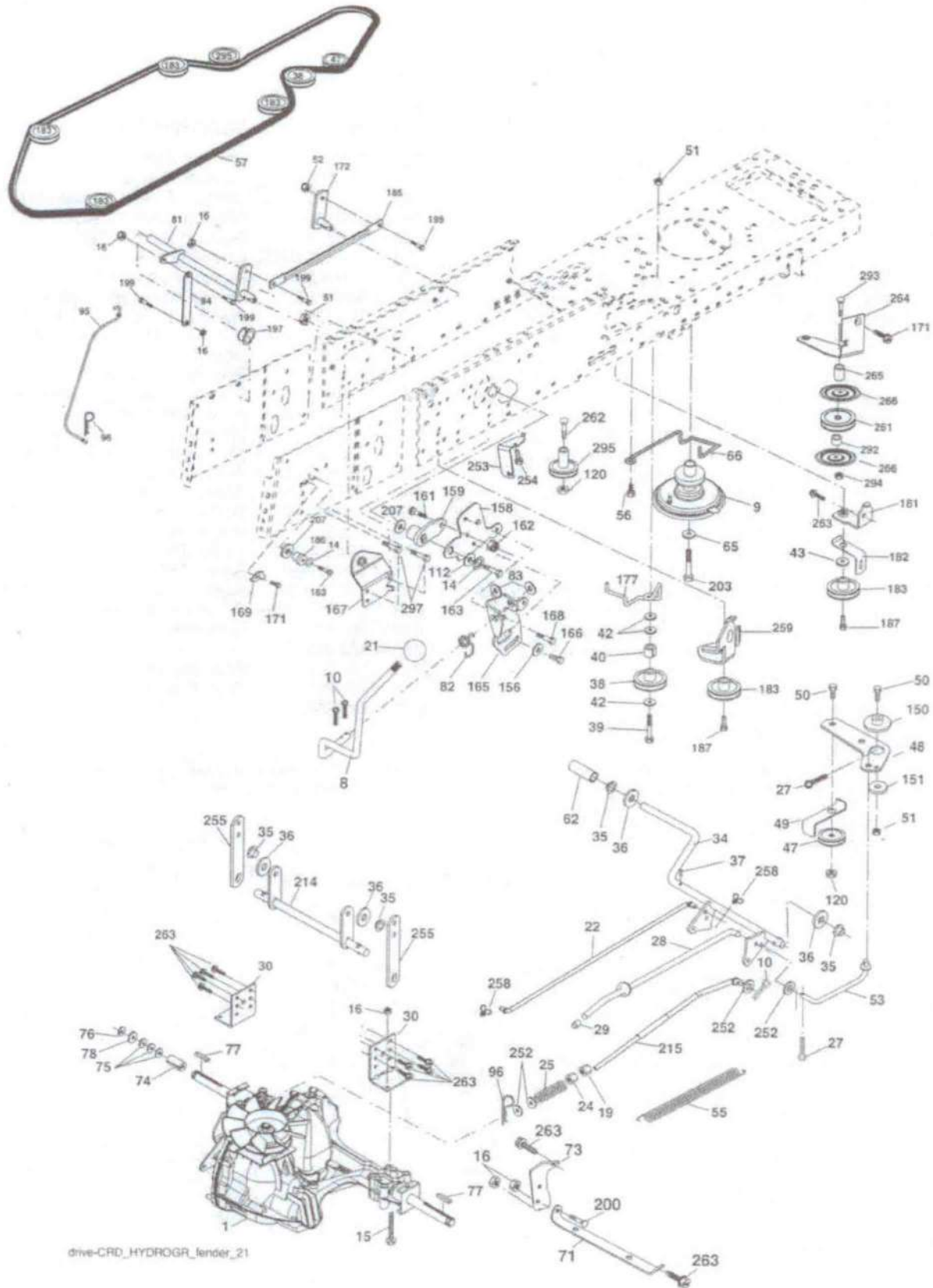
CHASSIS AND ENCLOSURES

KEY NO.	PART NO.	DESCRIPTION	KEY NO.	PART NO.	DESCRIPTION
1	174620	Chassis Assembly	155	183926	Bracket Asm.
2	180384	Drawbar	161	164655	Bumper Extrusion
3	17060612	Screw 3/8-16 x .75	162	180382	Bracket Exten Chassis LH CRD
6	184419	Saddle	163	180383	Bracket Exten Chassis RH CRD
8	126471X	Clip Insulator 13/32 Mtg. Hole	164	165605	Support Battery CRD
9	193611X428	Dash	165	179020X428	Cover Battery CRD Lt
10	STD533710	Bolt, Carriage 3/8-16 x 1	170	199488	Backplate Asm CRD
11	167203	Panel, Dash, LH	171	72140620	Bolt Rdhd Sqnk 3/8-16 x 2-1/2
13	188702X010	Panel, Asm. Dash RH	172	19132016	Washer 13/32 x 1-1/4 x 16 Ga.
15	74180512	Screw, Machine, Truss Head 5/16-18 unc x 3/4	173	STD541437	Nut, Keps Hex 3/8-16 unc
16	STD541431	Nut Keps 5/16-18 unc	175	188203	Door Trap
17	175259X615	Hood Assembly	179	188202	Rod Pivot FBI CRD
24	STD523710	Bolt Fin Hex 3/8-16 unc x 1. Gr. 5	184	174662	Bracket Actuator Bagger CRD
25	19131312	Washer 13/32 x 13/16 x 12 Ga.	185	179608X505	Knob Rod Brake Parking
26	STD541437	Nut Lock Hex w/Ins 3/8-16 unc	186	160793	Latch Asm Mulch/Bagger
28	174515X615	Grille	187	2029J	Nut Weid .327/.304 #10-24
29	179763	Lightbox Asm.	188	19061216	Washer #10
30	192533X615	Fender	189	STD551110	Washer Lock #10
31	165156	Bracket, Fender Support	190	71081010	Screw Pan Hd Phillips 10-24
33	179716X615	Footrest, LH	198	168937	Nut, Push
34	179717X615	Footrest, RH	205	17490608	Screw Thdrol 5/8-16 x 1/2
35	STD533107	Bolt RDHD SHT SQNK 3/8-16 x 3/4	207	17670508	Screw Thdrol 5/16-18 x 1/2
37	17490508	Screw Thdrol 5/16-18 x 1/2 TYT	209	17000612	Screw Hex Wsh Thdrol 3/8-16
38	181748	Pivot Bracket Assembly	256	180810X428	Cover Fender Rack
54	192512	Screw Wshd Hex 10-32 x 5/8	258	161842	Lens RH
58	190308	Duct Air Hood	259	161841	Lens LH
64	199395	Dash Lower	265	185704	Seal Side RH
67	106932X	Knob Rd. 3/8-16	266	185703	Seal Side LH
69	142432	Screw Hex 1/4-1/2 unc	278	416358	Screw #10 x 0.750 BOS THREAD
89	192391X428	Console			
145	409167	Rod Pivot Chassis/Hood			
154	194828	Clutch Asm. Noram			

NOTE: All component dimensions given in U.S. inches.
1 inch = 25.4 mm.

TRACTOR- -MODEL NO. 917.254601

DRIVE



drive-CRD_HYDROGR_fender_21

TRACTOR- -MODEL NO. 917.254601

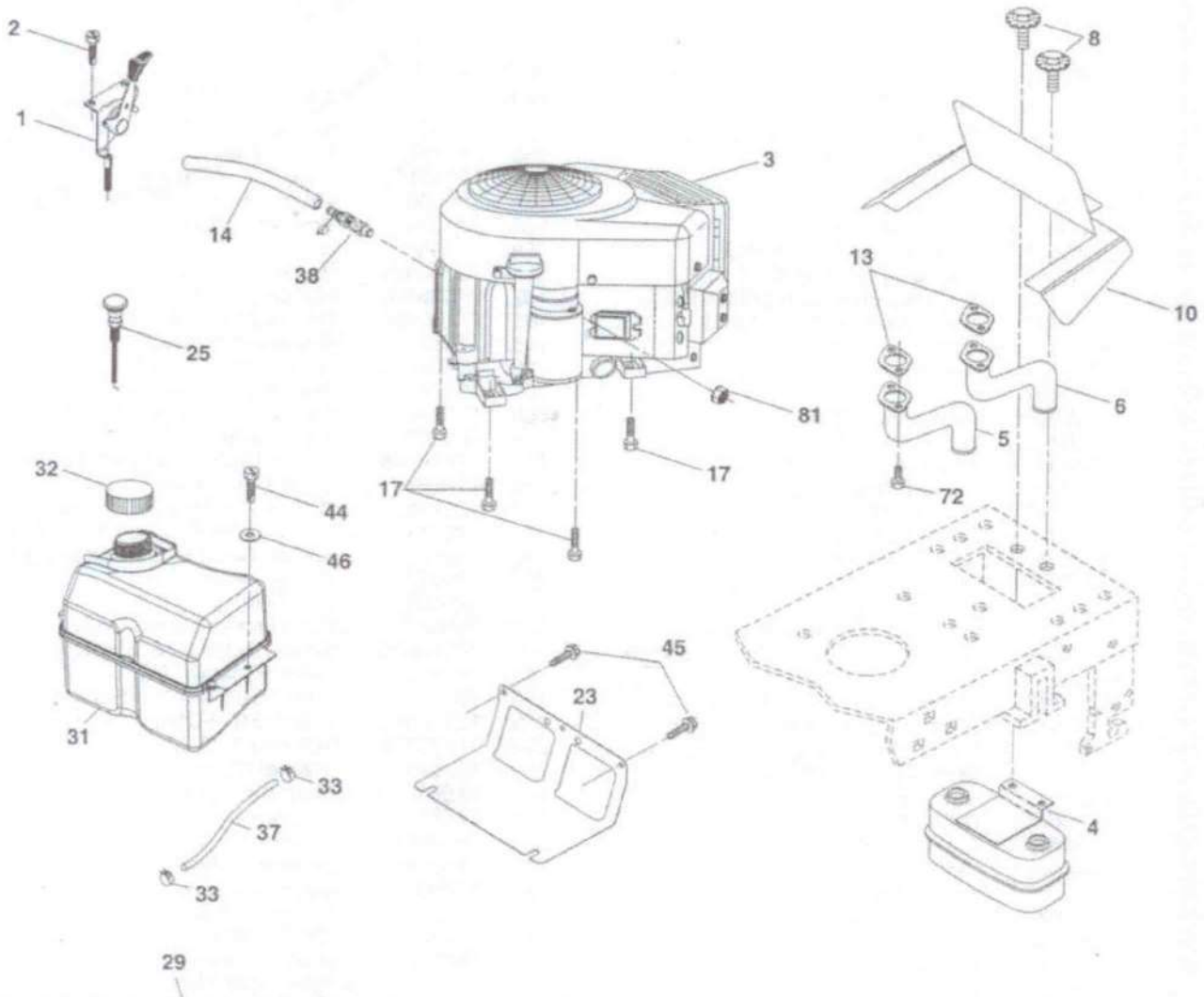
DRIVE

KEY NO.	PART NO.	DESCRIPTION	KEY NO.	PART NO.	DESCRIPTION
1	-----	Transaxle Hydro Gear 321-0510 (See Breakdown)	120	73900600	Nut Lock Fig. 3/8-16 unc
8	192706	Rod, Shift	150	165850	Bushing, Bellcrank Grnd Dr.
9	408579	Clutch	151	19133210	Washer 13/32 x 2 x 10 Ga.
10	76020416	Pin, Cotter 1/8 x 1	156	166002	Washer Srrted 5/16 ID x 1.125
14	10040400	Washer, Lock Hvy Helical	158	165589	Bracket Shift Mount
15	74490544	Bolt Hex FGHD 5/16-18 x Gr. 5	159	183900	Hub Shift
16	73800500	Nut, Lock Hex w/lms 5/16-18 unc	161	72140406	Bolt Rdhd Sqnk 1/4-20 x 3/4 Gr. 5
19	73800600	Nut, Lock Hex w/lms. 3/8-16	162	73680400	Nut Crownlock 1/4-20 unc
21	130564	Knob	163	74780416	Bolt Hex Fin 1/4-20 unc x 1 Gr. 5
22	175607	Rod, Brake	165	165623	Bracket Pivot Lever
24	73350600	Nut	166	17490510	Screw 5/16-18 x 5/8
25	192036	Spring, Rod, Brake	167	165588	Bracket Support Shift CRD
27	76020412	Pin, Cotter 1/8 x 3/4	168	165492	Bolt Shoulder 5/16-18 x .561
28	175765	Rod, Parking Brake	169	165580	Plate Fastening Lt
29	71673	Cap, Parking Brake	171	17490608	Screw Thdrol 3/8-16 x 1/2 Ty-Tt
30	169592	Bracket, Mfg. Transaxle	172	170271	Shaft Asm Shifter Frt CRD
34	175578	Shaft, Asm Pedal Foot CRD	177	165932	Keeper Flat Idler 3.06" CRD
35	120183X	Bearing, Nylon	181	180211	Bracket Idler Ground Drive CRD
36	19211616	Washer 21/32 x 1 x 16 Ga.	182	182682	Keeper Belt 2.5" Od V-Idler CRD
37	1572H	Pin, Roll 3/16 x 1"	183	199534	Pulley V-Idler
38	165936	Pulley Flat Composite 3.06"	185	170008	Link Shift
39	74760644	Bolt Fin Hex 3/8-16 unc x 2-3/4	186	165614	Hub Tapered Round CRD
40	4470J	Spacer, Split 395 x 59 Bzp	187	17580520	Screw Thdrol 5/16-18 x 1.25
42	19131312	Washer 13/32 x 13/16 x 12 Ga.	197	169613	Nyliner Snap-In 5/8
43	19111012	Washer 11/32 x 5/8 x 12 Ga.	199	169612	Bolt Shoulder 5/16-18 unc
47	127783	Pulley, Idler, V Groove Plastic	200	72140508	Bolt RDHD SQNK 5/16-18 x 1
48	154407	Bellcrank Clutch Grnd Drv	203	71170780	Bolt Hex 7/16-20 x 5
49	123205X	Retainer, Belt Style Spring	207	169845	Washer Nylon Rear
50	72110612	Bolt, Carr. 3/8-16 x 1/2 x Gr. 5	214	175609	Shaft Asm. Brake
51	73680600	Nut, Crownlock 3/8-16 unc	215	175652	Rod Brake Hydro
52	73680500	Nut, Crownlock 5/16-18	252	19131616	Washer 13/32 x 1 x 16 Ga.
53	199652	Link, Clutch 7.66	253	175028	Bracket, Cable
55	105709X	Spring, Return, Clutch	254	17000616	Screw 3/8-16 x 1
56	17060620	Screw 3/8-16 x 1-1/4	255	175608	Brace Shaft Brake Mtg.
57	170140	V-Belt Kev 112" 0650 CRD	258	178062	Clip Retainer
62	8883R	Cover, Pedal	259	180212	Bracket Pulley
65	10040700	Washer	261	131494	Pulley Idler Flat
66	154778	Keeper, Belt Engine F-Proof	262	72110622	Bolt Rdhd 3/8-16 unc x 2-3/4 Gr. 5
71	169183	Strap, Torque, LH	263	17000612	Screw 3/8-16 x 3/4
73	169182	Strap, Torque, RH	264	431174	Bracket Idler
74	137057	Spacer, Split	265	426913	Spacer, Idler
75	121749X	Washer 25/32 x 1-1/4 x 16 Ga.	266	182061	Shield, Idler
76	12000001	Ring, E	292	400271	Spacer Noram
77	123583X	Key, Square	293	72140628	Bolt 3/8-16 x 3-1/2
78	121748X	Washer 25/32 x 1-5/8 x 16 Ga.	294	197033	Nut Jam 3/8-16
81	170006	Asm, Shaft	295	179114	Pulley Idler Composite
82	165711	Spring, Torsion	297	17490610	Screw HXWSH THDR 3/8-16 x 5/8
83	19171216	Washer 17/32 x 3/4 x 16 Ga.			
84	170007	Link, Transaxle			
95	170015	Control Asm Bypass Hydro			
96	4497H	Spring, Retainer 1"			
112	19091210	Washer 9/32 x 3/4 x 10 Ga.			

NOTE: All component dimensions given in U.S. inches
1 inch = 25.4 mm

TRACTOR- -MODEL NO. 917.254601

ENGINE



OPTIONAL EQUIPMENT
Spark Arrester

engine-CRD-bs_22

ENGINE

TRACTOR- -MODEL NO. 917.254601

KEY NO.	PART NO.	DESCRIPTION
1	175437X428	Control Throttle
2	416358	Screw #10 x 0.750 BOS Thread
3	-----	Engine Briggs Model 49M777-1460-G1
4	149723	Muffler Asm.
5	160589	Exhaust Tube RH
6	159955	Exhaust Tube LH
8	171877	Bolt 5/16-18 unc x 3/4 w/Sems
10	434017	Shield Heat
13	165391	Gasket
14	148456	Tube Drain Oil Easy
17	17060620	Screw 3/8-16 x 1-1/4
23	169837	Shield Browning/Debris Guard
25	187767X428	Control Choke
29	137180	Arrester Spark
31	407551	Tank Fuel
32	430220	Cap Asm Fuel
33	123487X	Clamp Hose Bik
37	137040	Line Fuel 20"
38	428287	Oil Drain
44	17670412	Screw Hexwsh Thdrol 1/4-20 x 3/4
45	17000612	Screw Hexwsh Thdr 3/8-16 x 3/4
46	19091416	Washer 9/32 x 7/8 x 16 Ga.
72	183906	Screw Socket 5/16-18 x 1
81	STD541425	Nut Keps 1/4-20 unc

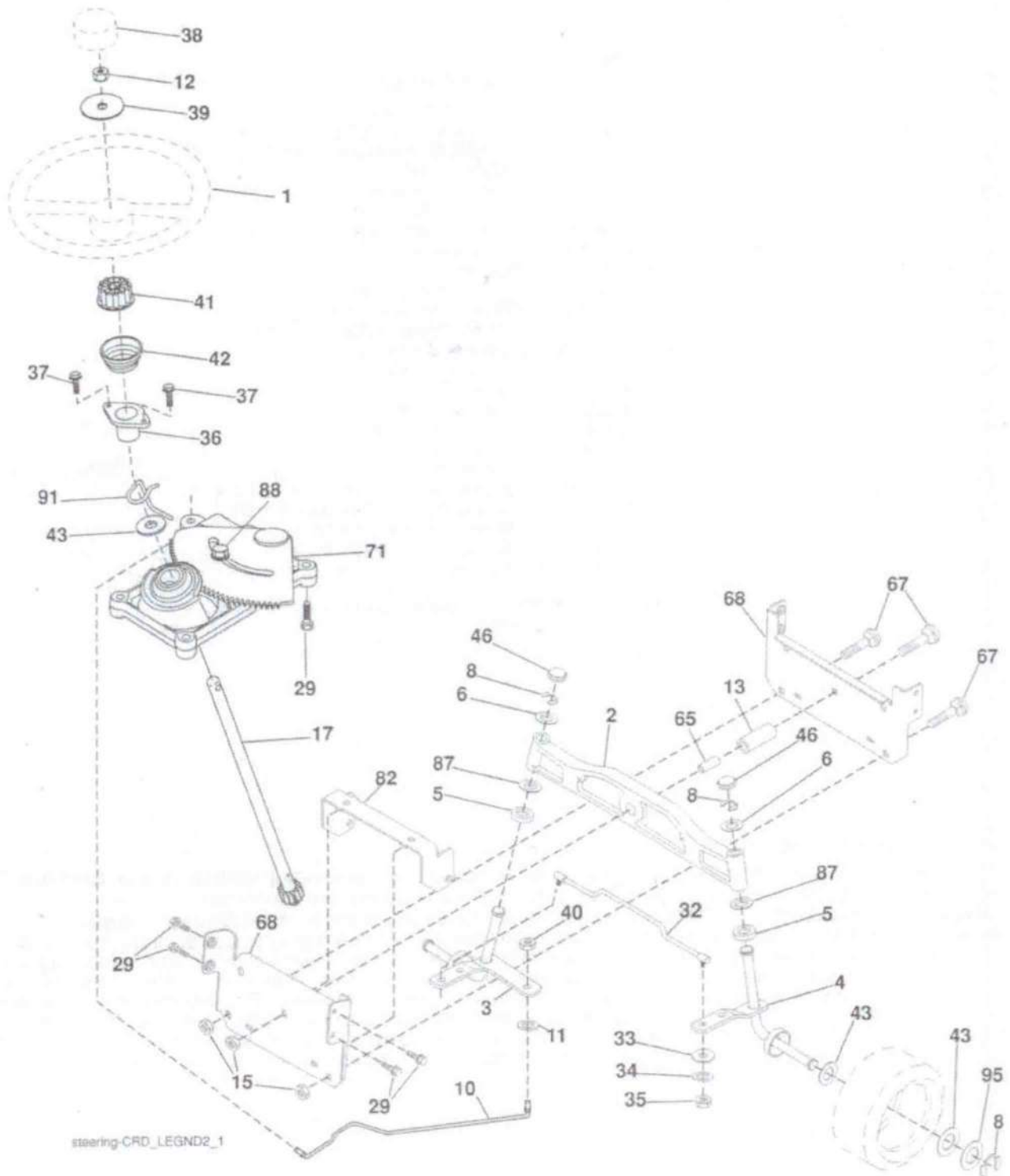
NOTE: All component dimensions given in U.S. inches
1 inch = 25.4 mm

Engine Power Rating Information

The gross power rating for individual gas engine models is labeled in accordance with SAE (Society of Automotive Engineers) code J1940 (Small Engine Power & Torque Rating Procedure), and rating performance has been obtained and corrected in accordance with SAE J1995 (Revision 2002-05). Torque values are derived at 3060 RPM; horsepower values are derived at 3600 RPM. Actual gross engine power will be lower and is affected by, among other things, ambient operating conditions and engine-to-engine variability. Given both the wide array of products on which engines are placed and the variety of environmental issues applicable to operating the equipment, the gas engine will not develop the rated gross power when used in a given piece of power equipment (actual "on-site" or net power). This difference is due to a variety of factors including, but not limited to, accessories (air cleaner, exhaust, charging, cooling, carburetor, fuel pump, etc.), application limitations, ambient operating conditions (temperature, humidity, altitude), and engine-to-engine variability. Due to manufacturing and capacity limitations, Briggs & Stratton may substitute an engine of higher rated power for this Series engine.

TRACTOR- -MODEL NO. 917.254601

STEERING ASSEMBLY



steering-CRD_LEGND2_1

STEERING ASSEMBLY

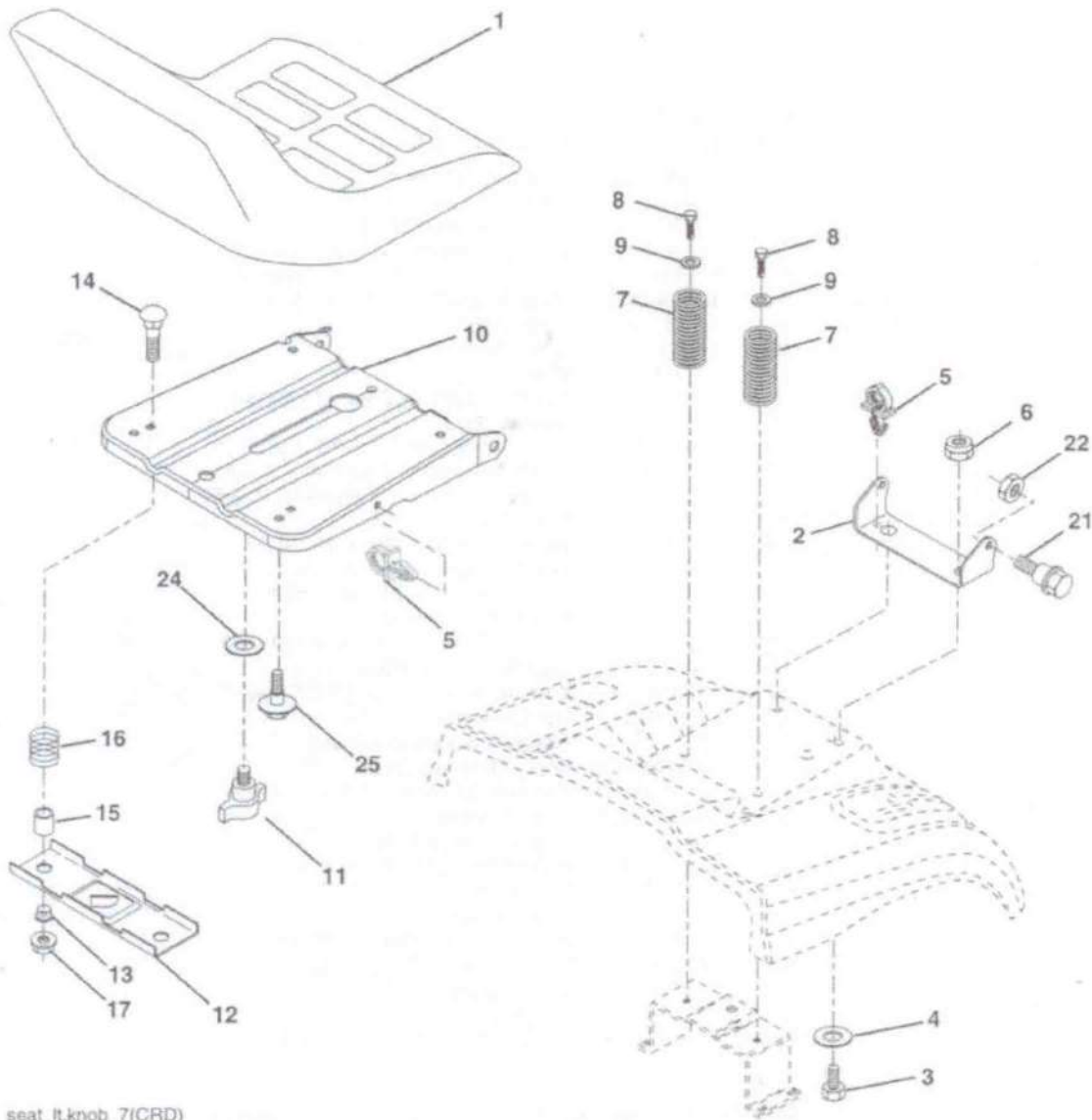
TRACTOR- -MODEL NO. 917.254601

KEY NO.	PART NO.	DESCRIPTION
1	414803X428	Steering Wheel
2	184706	Front Axle Assembly
3	169840	Spindle Assembly, LH
4	169839	Spindle Assembly, RH
5	6266H	Bearing, Race, Thrust, Hardened
6	121748X	Washer 25/32 x 1-5/8 x 16 Ga.
8	1200029	Ring, Clip
10	175121	Link, Drag
11	STD551137	Washer, Lock
12	73940800	Nut Hex Jam Toplock 1/2-20 unf
13	136518	Spacer Axle
15	73900600	Nut, Flange Lock 3/8-16 unc
17	177883	Shaft Assembly, Steering
29	17000612	Screw, 3/8-16 x 3/4 SMGML Tap/R
32	170162	Rod, Tie
33	19111216	Washer 11/32 x 3/4 x 16 Ga.
34	STD551131	Washer Lock Hvy Hlcl Spr 5/16
35	73540500	Nut Crownlock 5/16-24 unf
36	155105	Bushing, Steering
37	152927	Screw TT #10-32 x 5 x 3/8 Flange
38	414852X428	Cap Wheel Steering
39	19183812	Washer 9/16 ID x 2-3/8 OD. 12 GZIN
40	73540600	Nut Crownlock 3/8-24
41	186737	Adaptor, Steering Wheel
42	163888X428	Boot, Steering Dash
43	121749X	Washer 25/32 x 1-1/4 x 16 Ga.
46	184946X505	Cap, Spindle
65	414736	Spacer Brace Axle
67	72110618	Bolt RDHD SQ 3/8-16 x 2-1/4
68	169827	Brace Axle
71	175146	Steering Asm.
82	199978	Bracket Susp Chassis Front
87	173966	Washer Flat .781 x 1-1/2 x .14
88	175118	Bolt Shoulder
91	175553	Clip Steering
95	188967	Washer Harden .739 x 1.637 x .060

NOTE: All component dimensions given in U.S. inches.
1 inch = 25.4 mm.

TRACTOR- -MODEL NO. 917.254601

SEAT ASSEMBLY



seat_ft.knob_7(CRD)

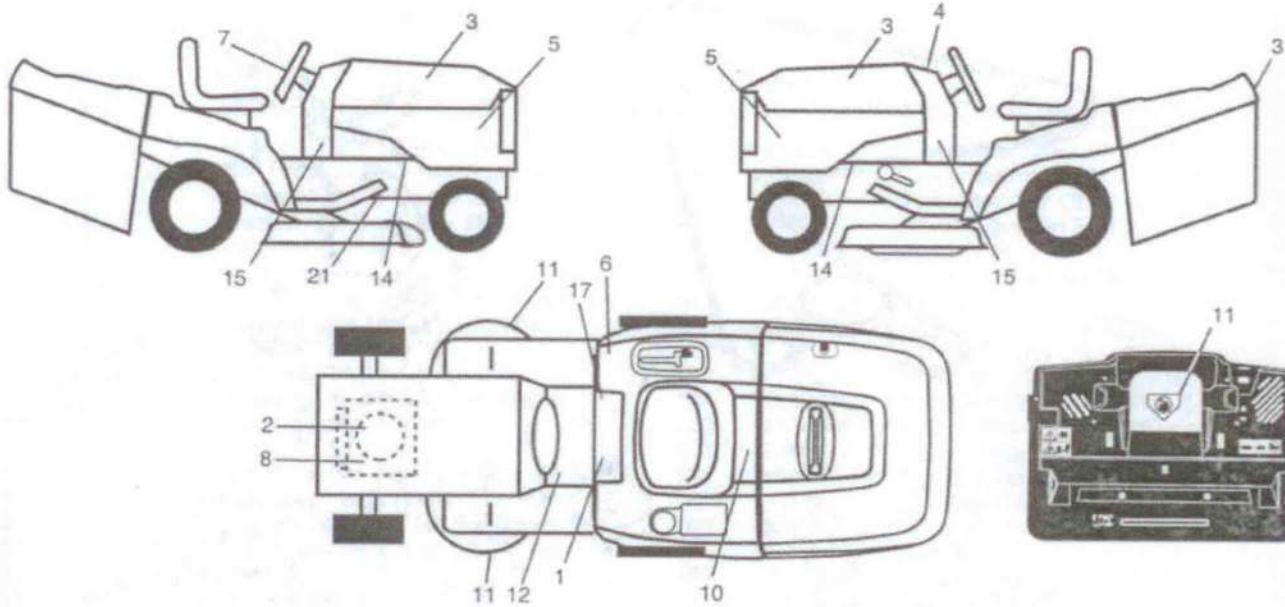
KEY NO.	PART NO.	DESCRIPTION
1	188714	Seat
2	140551	Bracket Pnt Pivot Seat (Blk)
3	71110616	Bolt Fin Hex 3/8-16 unc x 1
4	19131610	Washer Flat 13/32 x 1 x 10 Ga.
5	145006	Clip Push In Hinged
6	STD541437	Nut Lock Hex 3/8-16 unc
7	124181X	Spring Seat Cprsn 2 250 Blk Zi
8	17000616	Screw 3/8-16 x 1
9	19131614	Washer 13/32 x 1 x 14 Ga.
10	195530	Pan Pnt Seat
11	166369	Knob Seat Adj Wingnut
12	174648	Bracket Pnt Mounting Switch

KEY NO.	PART NO.	DESCRIPTION
13	121248X	Bushing Snap Blk Nyl 50 Id
14	72050412	Bolt Rdhd Sht Nk 1/4-20 x 1-1/2
15	121249X	Spacer Split .28 x .88 Zinc
16	123740X	Spring Cprsn
17	123976X	Nut Lock 1/4 Lge Flg Gr. 5 Zinc
21	171852	Bolt Shoulder 5/16-18 unc-2A
22	STD541431	Nut Hex Lock w/Ins 5/16-18
24	19171912	Washer 17/32 x 1-3/16 x 12 Ga.
25	127018X	Bolt Shoulder 5/16-18 x .62

NOTE: All component dimensions given in U.S. inches.
1 inch = 25.4 mm

TRACTOR--MODEL NO. 917.254601

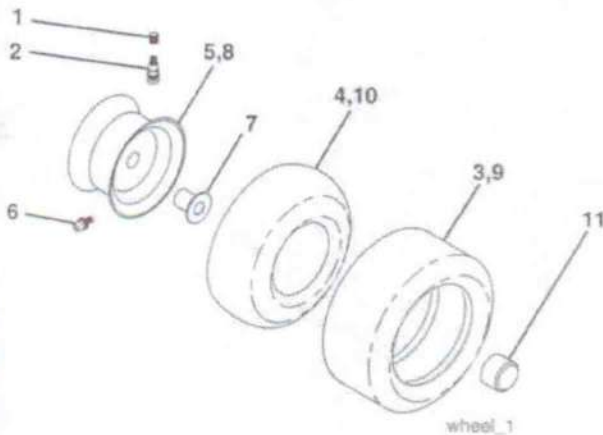
DECALS



KEY NO.	PART NO.	DESCRIPTION
1	400389	Decal, Read Owner's Manual Sym
2	435126	Decal, Hp Engine
3	425123	Decal, Hood
4	194606	Decal, Dash Ins Blank CBL
5	403415	Decal, Hood Side
6	180432	Decal, 100 DB/CE
7	422885	Decal, Steering
8	196841	Decal, Engine Warning Sym
10	145005	Decal, Bat Dan/Poi P/L Sym Wpr
11	182166	Decal, Mower Cut Finger Symbol
12	159737	Decal, Brake/Clutch Symbol Lt
14	159736	Decal, Chassis Hot Muffler

KEY NO.	PART NO.	DESCRIPTION
15	435320	Decal, Dash LWR
17	140837	Decal, Saddle Brake Parking
21	166286	Decal, Deck Sch 92 CRD
--	166960	Decal, Bypass
--	179768X428	Pad, Footrest LH
--	179769X428	Pad, Footrest RH
--	435135	Manual Operator's (Euro)
--	435136	Manual Operator's (Scan)
--	435137	Manual Operator's (E-Bloc)
--	435138	Manual Operator's (Baltic)
--	435139	Manual Parts

WHEELS & TIRES

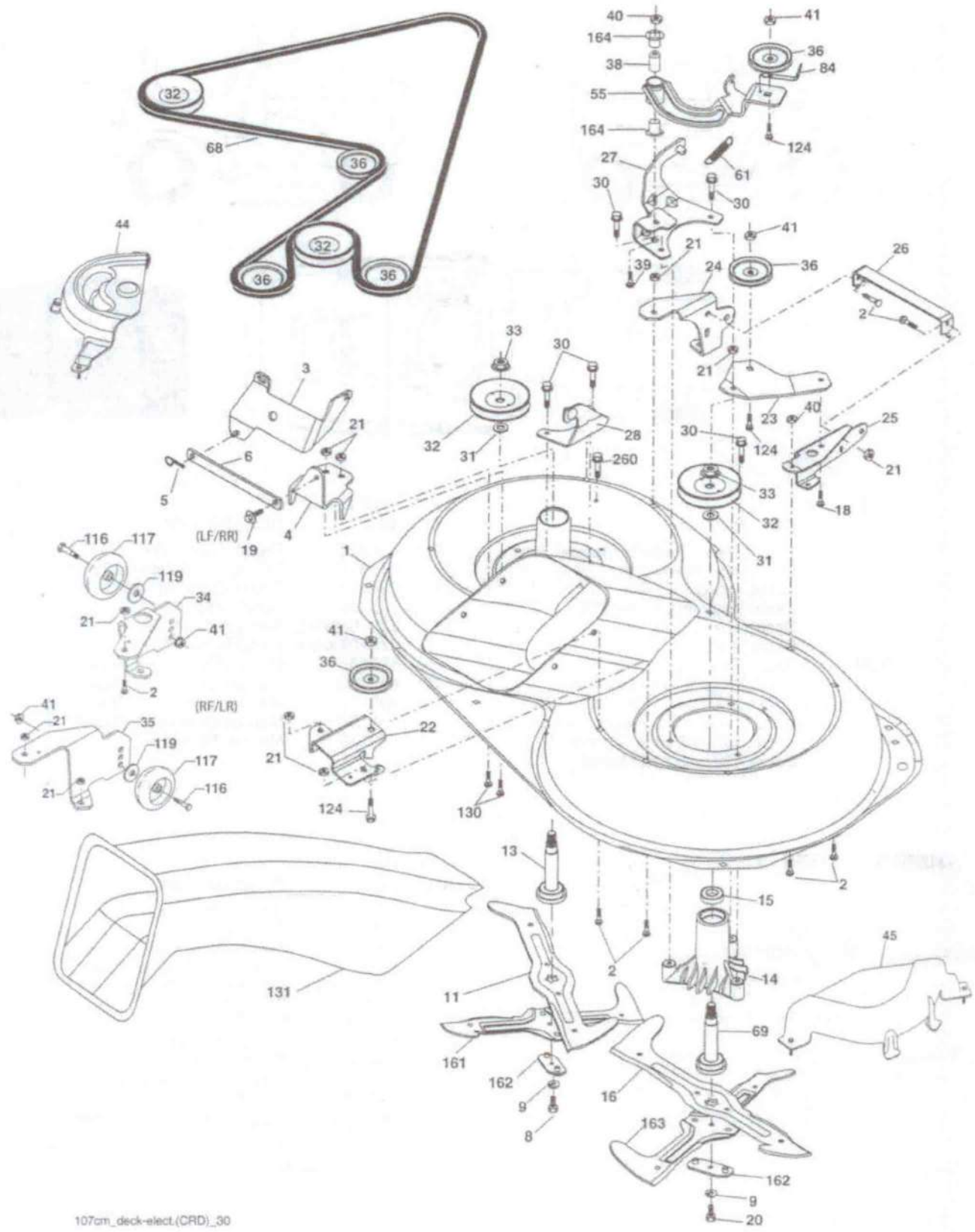


KEY NO.	PART NO.	DESCRIPTION
1	59192	Cap Valve Tire
2	65139	Stem Valve
3	106222X	Tire F Ts 15 x 6.0 - 6 Service
4	59904	Tube Inner Front #35060
5	106732X613	Rim Asm 6" Front Service
6	278H	Fitting Grease
7	9040H	Bearing Flange
8	106108X613	Rim Asm 8" Rear Service
9	138648	Tire R Ts 20 x 8-8 Service
10	7152J	Tube Rear 9.5 x 8 Service
11	104757X428	Cap Axle Blk 1 50 x 1 00
--	144334	Sealant, Tire (10 oz. tube)

NOTE: All component dimensions given in U.S. inches
1 inch = 25.4 mm

TRACTOR- -MODEL NO. 917.254601

MOWER



107cm_deck-elect.(CRD)_30

TRACTOR- -MODEL NO. 917.254601

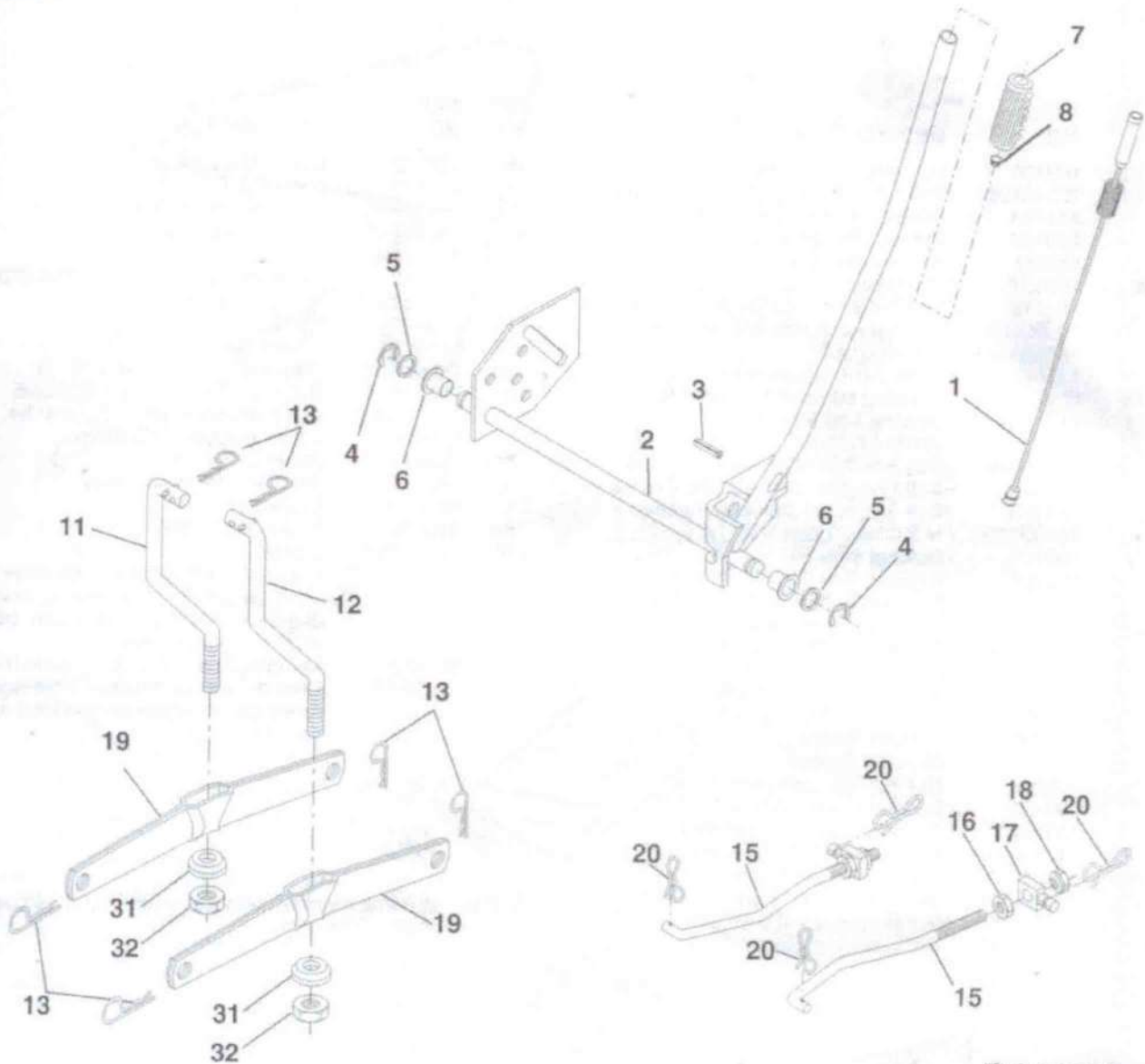
MOWER

KEY NO.	PART NO.	DESCRIPTION	KEY NO.	PART NO.	DESCRIPTION
1	169160	Housing Asm. Mower	44	432773	Cover Mandrel LH
2	72140506	Bolt Rdhd Sqnk 5/16-18 unc x 3/4	45	432772	Cover Mandrel RH
3	431864	Bracket Asm. S-Bar Chass	55	169849	Arm Idler 107 CRD
4	169167	Bracket Bar Sway Deck	61	199487	Spring Tension Belt
5	4939M	Retainer Spring	68	402009	Belt, Drive
6	165557	Bar Sway	69	165482	Shaft Asm w/Lwr Brg RH Thd CRD
8	181712	Bolt 3/8-24 x 1.25 Gr. 8 Ptch LHthd	84	156085	Keeper Belt Idler
9	10030600	Washer Lock Hvy 3/8 Unplated	116	193406	Bolt Shoulder
11	180583	Blade 3-1 LH	117	174873	Wheel Gauge
13	137645	Shaft Asm. w/Lower Bearing	119	19132012	Washer 13/32 x 1-1/4 x 12
14	128774	Housing Mandrel Vented (Machd)	124	72110612	Bolt Carr Sh 3/8-16 x 1-1/2 Gr. 5
15	110485X	Bearing Ball Mandrel	130	72110506	Bolt Rdhdsqnk 5/16-18 unc x 3/4
16	180584	Blade 3-1 RH	131	165661	Chute Bagger CRD 92cm
18	72110606	Bolt Rdhd Sht Sqnk 3/8-16 x 3/4	161	180424	Blade Cross LH
19	132827	Bolt Shoulder 5/16-18 Thd Form	162	180878	Adapter Weldment Blade
20	181713	Bolt 3/8-24 x 1.25 Gr. 8 Patched	163	180425	Blade Cross RH
21	73680500	Nut Crown Lock 5/16-18	164	3366R	Bearing Col. Strg.
22	169165	Bracket Idler RR	260	17670608	Screw Thdrol 3/8-16 x 1/2
23	169166	Bracket Idler RF	---	181857	Mandrel Assembly (Includes housing, shaft assembly, and bearing only - pulley/nut/washer and blade bolt/ washers not included)
24	413436	Bracket Suspension LH	---	181858	Mandrel Asm CRD LH Threads SVC
25	400105	Bracket Suspension RF	---	432502	Deck Mower Complete (Order separately gauge wheel components key nos. 116-119)
26	400110	Brace Support Susp Frt CRD			
27	169172	Bracket Asm. Susp RR			
28	169168	Bracket Asm. Susp LR			
30	173984	Screw Thd Rolling			
31	187690	Washer Spacer			
32	198145	Mandrel Pulleys			
33	400234	Nut Flg Top Lock			
34	400103	Bracket Gauge Wheel LF/RR			
35	400104	Bracket Gauge Wheel RF/LR			
36	146763	Pulley Idler V-Groove Dim 4.25			
38	169851	Spacer Hub Arm Idler 107 CRD			
39	72110622	Bolt Rdhd 3/8-16 unc x 2-3/4 Gr. 5			
40	73680600	Nut Crownlock 3/8-16 unc			
41	73900600	Nut 3/8-16			

NOTE: All component dimensions given in U.S. inches
1 inch = 25.4 mm

TRACTOR- -MODEL NO. 917.254601

MOWER LIFT



lift-rh.1piece_3

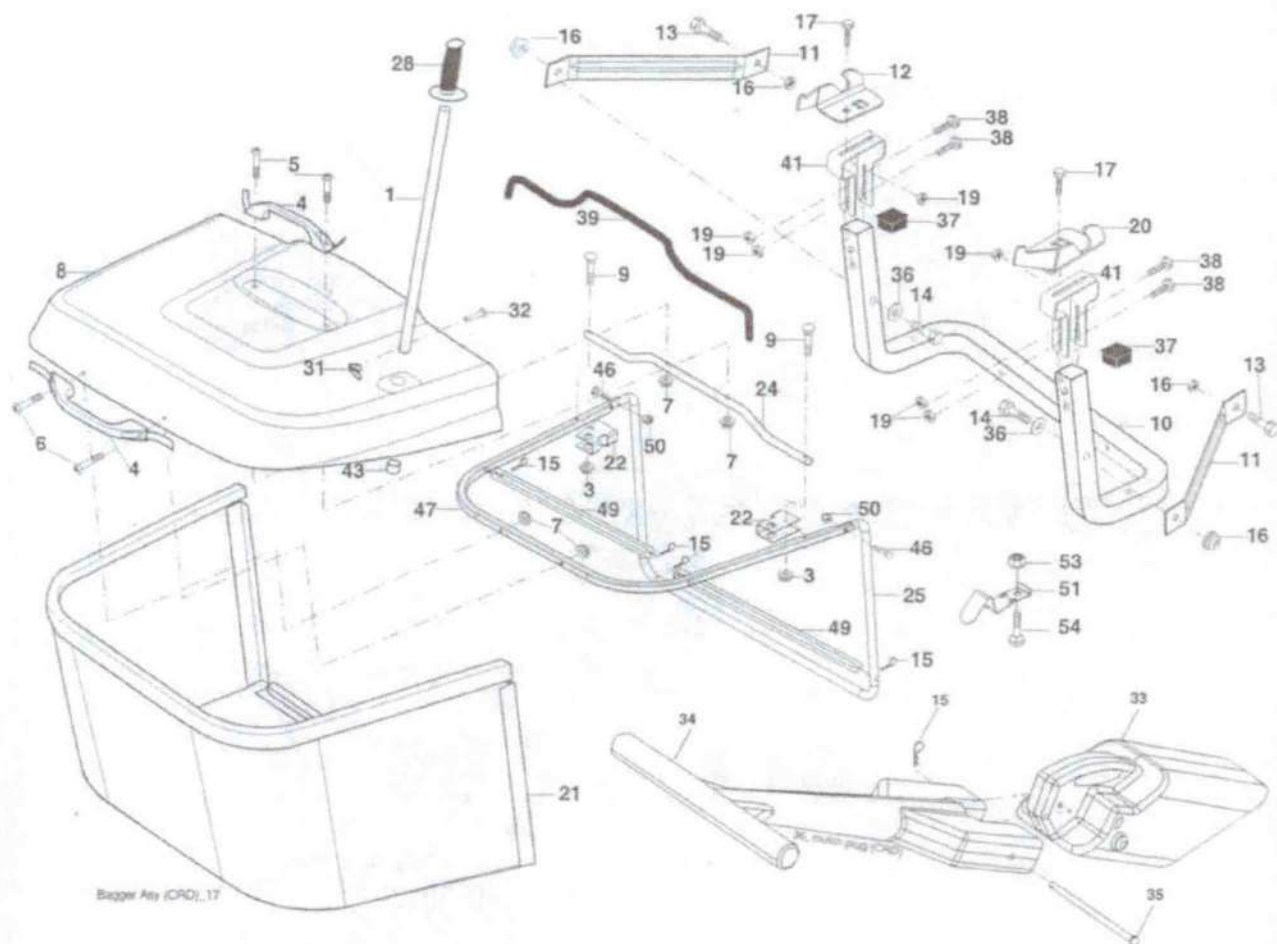
KEY NO.	PART NO.	DESCRIPTION
1	405007	Plunger Asm. Lift LVR
2	198070	Shaft Asm. Lift
3	188822	Pin Groove
4	12000002	E Ring #5133-62
5	19211621	Washer 21/32 x 1 x 21 Ga.
6	120183X	Bearing Nylon
7	125631X	Grip Handle
8	122365X	Button Plunger
11	165829	Link Asm Lift LH
12	165831	Link Asm Lift RH
13	STD624008	Retainer Spring

KEY NO.	PART NO.	DESCRIPTION
15	173288	Link Front
16	73350800	Nut Jam Hex 1/2-13 unc
17	175689	Trunnion Blk Zinc
18	73800800	Nut Lock w/Wsh 1/2-13 unc
19	139868	Arm Suspension Mower
20	194209	Pin Cotter Bow Tie Lock
31	169865	Bearing, Pvt. Lift.
32	73540600	Nut Crownlock 3/8-24

NOTE: All component dimensions given in U.S. inches
1 inch = 25.4 mm

TRACTOR- -MODEL NO. 917.254601

BAGGER

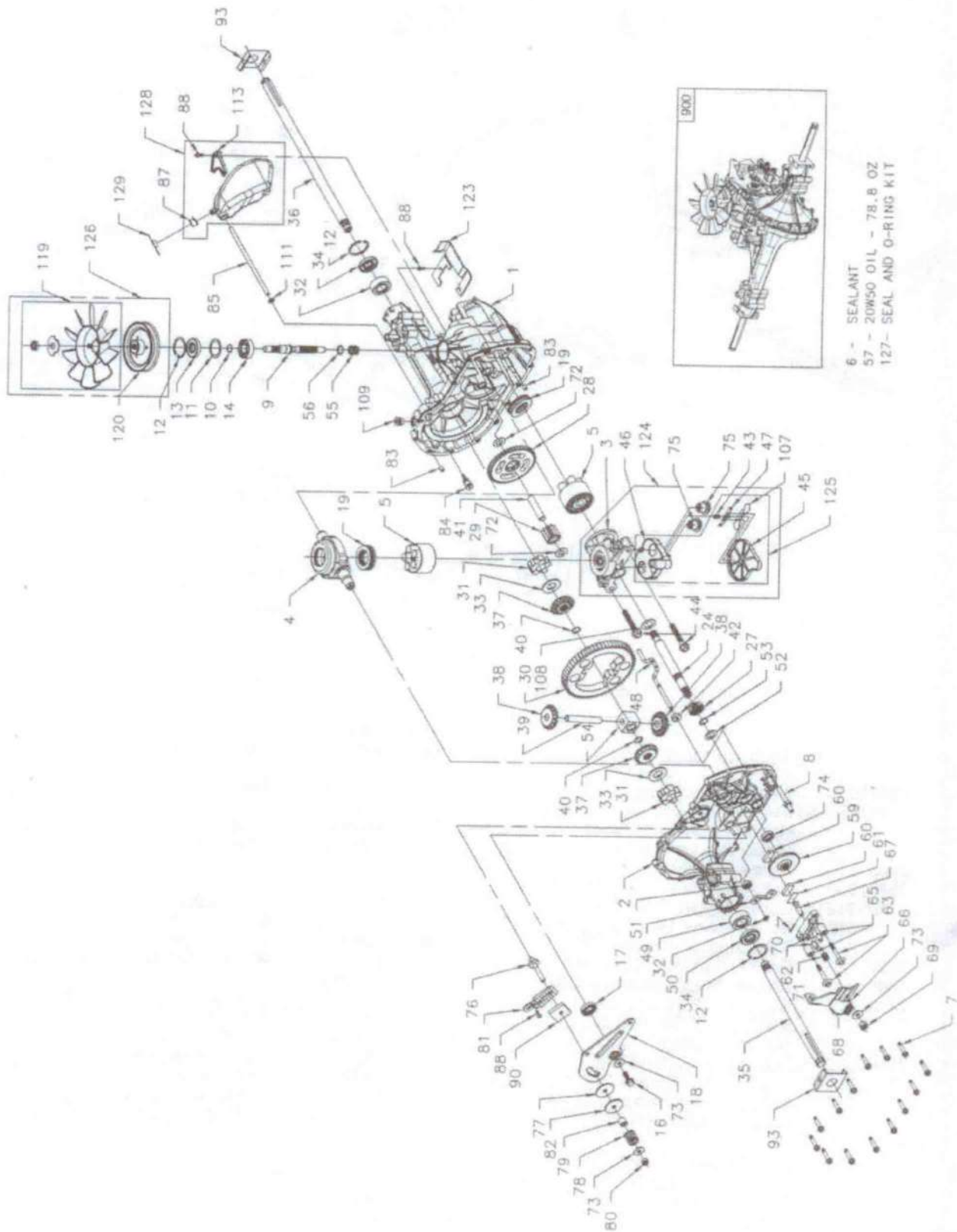


KEY NO.	PART NO.	DESCRIPTION
1	428610	Tube Handle Bagger CRD
3	123976X	Nut Lock 1/4 Lge Flg Gr. 5 Zinc
4	169916	Handle Bagger
5	74981024	Screw Pan Head #10-24 x 1.50 Blk
6	74981032	Screw Pan Hd
7	73401000	Nut Wiz Lock Hex Serr/Hd 10-24
8	169963X615	Cover Bagger Steel CRD
9	72140418	Bolt Carriage 1/4-20 x 2.25d x Gr. 5
10	181282	Tube Support Bagger CRD
11	165719	Bracket Support Upper Bag CRD
12	188848	Bracket Pivot Bagger LH CRD
13	74760612	Bolt Hex 3/8-16 unc x 3/4
14	74520636	Bolt Fin Hex 3/8-16 x 2-1/4 Gr. 5
15	4939M	Retainer Spring
16	73900600	Nut Lock Flg 3/8-16 unc
17	STD533107	Bolt Rdhd Sht Sqnk 5/16-18 unc x 3/4
19	73900500	Nut Lock Hex Flange 5/16-18
20	188847	Bracket Bagger RH CRD
21	406180	Bag Asm CRD
22	428236	Bracket Side Bagger CRD
24	165783	Tube Pivot Bagger CRD
25	193705	Tube Front Bagger CRD
28	165787	Grip Handle Black

KEY NO.	PART NO.	DESCRIPTION
31	169484	Retainer Clip
32	126875X	Rivet Rd Hd Drilled 3/8 Dia
33	428683	Plug Mulcher
34	165570	Handle Mulcher
35	165572	Pin Mulcher
36	19132012	Washer 13/32 x 1-1/4 x 12 Ga.
37	175401	Plug Support Bagger CRD
38	72010520	Bolt 5/16-18 x 5.20
39	416257	Seal Bagger
41	432755	Bracket Vert Adj Bagger CRD
43	174083	Plug Tubing End
46	72110510	Bolt Carr 5/16-18 x 1-1/4 Gr. 5
47	193704	Tube Upper
49	193305	Bar Spreader
50	73800500	Nut Lock Hx w/lns 5/16-18 unc
51	199903	Latch Spring
53	73510400	Nut Keps Hex 1/4-20 unc
54	72140406	Bolt RDHD SQNK 1/4-20 x 3/4 Gr. 5

NOTE: All component dimensions given in U.S. inches
1 inch = 25.4 mm

TRACTOR- -MODEL NO. 917.254601
HYDRO TRANSAXLE - MODEL NUMBER 321-0510



TRACTOR- -MODEL NO. 917.254601

HYDRO TRANSAXLE - MODEL NUMBER 321-0510

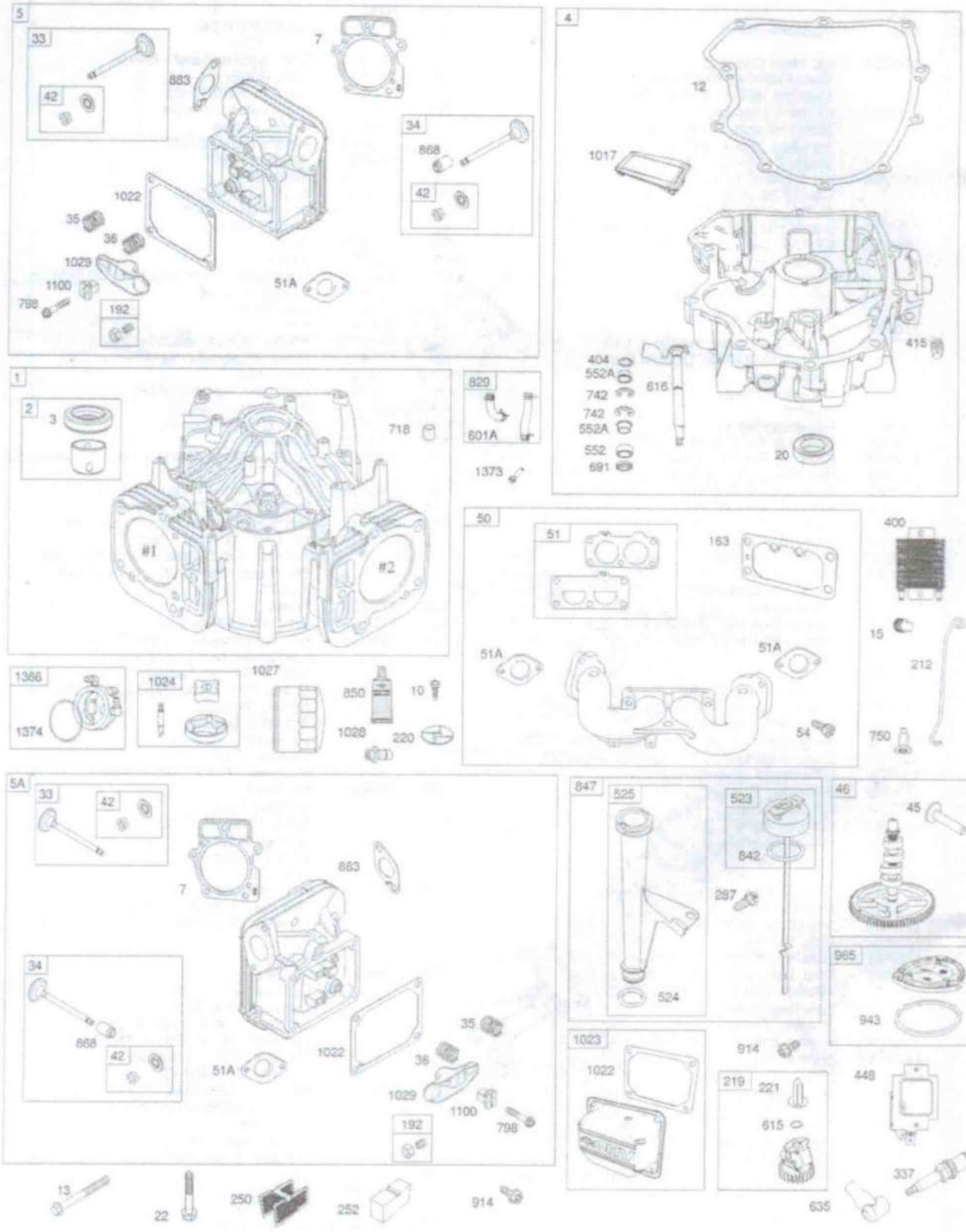
KEY NO.	PART NO.	DESCRIPTION	KEY NO.	PART NO.	DESCRIPTION
1	170351	Kit, Main Housing	67	170413	Bolt, Square Head - Brake
		Main Housing, Machined	68	178157	Arm, Brake
		Bushing .855 X .985 X .790	69	170415	Nut, Castle 5/16-24
2	170352	Kit, Side Housing	70	170416	Pin, Cotter 3/32x3/4
		Side Housing, Machined	71	170417	Brake Spring
		Bushing .865 X .985 X .790	72	170418	Washer (310-0750)
		Bushing .624 X .719 X .562	73	142884	Washer, Flat
3	170353	Kit, Center Section	74	170419	Seal, Oil
		Center Section, Machined	75	170420	Ass'y Check Plug
		Bushing .707 X .788 X .591	76	170421	Bolt, Stud 5/16-24
4	170354	Swashplate, Trunnion Machined	77	170422	Puck, Friction
5	169898	Kit, Cylinder Block (10cc)	78	142969	Spring
		Block - Cylinder	79	142980	Spacer
		Piston	80	150778	Nut, Nylon Insert Hex Lock 5/16-24
		Spring, Compression	81	170423	Wedge, Friction
		Washer - Thrust	82	170424	Clip, Washer
6	178322	Sealant Tube	83	161168	Pin
7	170356	Hexflange Screw 1/4-20 X 1.25	84	170425	Fitting, 5/16 X Sae 5/32 Tube
8	170357	Stud, 5/16-24 Hex Double End	85	170426	Hose, Expansion Tank
9	170358	Shaft, Input	87	173160	Cap, Vent
10	170359	Retaining Ring	88	178334	Bolt, Self Tapping (BDR)
11	170360	Spacer	90	170430	Puck, Inner Wedge
12	169870	Retaining Ring	91	170431	Spring Clip, Housing
13	170361	Seal, Lip .67 X 1.58 X .276	107	170432	Deflector
14	173158	Bearing, Ball 6203 (Bdr)	108	170433	Washer, Motor Shaft .71id X 1.15od X .03 Thick
16	170362	Hex Flange Head Screw 1/4-20 X 1.25	109	170434	Plug, Straight Thread 9/16-18
17	170363	Seal, Lip 18 X 32 X 7	111	170435	O-ring .7 X .301 Id
18	170364	Arm, Control	113	170437	Bracket, Support Expansion Tank
19	173159	Bearing, Thrust (10cc)	119	191031	Kit, Fan - Washer - Nut
24	170366	Shaft Motor			Washer, Od Slotted .53 X 1.63 X .06
27	170367	Gear, Pinion, 13t			Hex Lock Nut 1/2-20 (Nylon Insert)
28	170368	10t / 48t Gear			Fan 7"
29	170369	Gear, 10t Jackshaft	120	178159	Pulley
30	170370	60t Bullgear	123	178160	Bracket, Belt Keeper
31	170371	Sieve Bearing .75 X 1.75 X .625	124	191033	Kit, Centersection, Filter Bypass
32	170389	Sleeve Bearing (Outboard) .75 X 1.575 X .625			Center Section Machining
33	142991	Washer			Base Filter W/ Poppet
34	170390	Lip Seal, Axle Shaft			Check Plug Assembly, .027 Washer
35	170391	Shaft, Axle (Keyed, R.h.)			Spring, Bypass
36	170392	Shaft, Axle (Keyed, L.h.)			Actuator, Bypass
37	150792	Gear, Splined Diff. (210-1000 & 310-0750)			Deflector
38	150793	Gear, Miter Diff. (210-1000 & 310-0750)			Bottom, Filter
39	150809	Differential Shaft (310-0750)			Bushing, .707 X .788 X .591
40	170393	Retaining Ring	125	170445	Kit, Filter
41	170394	Pin, Jackshaft			Bottom, Filter
42	170395	Magnet, Ring			Base, Filter W/ Poppet
43	170396	Spring, Bypass			Spring, Bypass
44	150797	Bolt 3/8-24 X 2-1/2			Actuator, Bypass
45	170397	Filter			Deflector
46	170398	Base, Filter	126	191029	Kit, Fan/pulley
47	170399	Actuator, Bypass			Hex Jam 1/20-20 (Nylon Insert)
48	170400	Rod, Bypass Actuator			Washer, OD Slotted, .53 X 1.53 X .06
49	178156	Arm, Bypass			Fan, 7 In
50	170402	Retaining Ring .25 External			Pulley
51	170403	Seal, Lip .741 X .25 X .25	127	170447	Kit, Seal
52	170404	Washer, Flat 0.050" (210-1000)			Lip Seal .67 X 1.58 X .276
53	170405	Retaining Ring			Lip Seal 18 X 32 X 7
54	170406	Bearing, Center Block			Lip Seal .706 X 1.584 X .25
55	142977	Spring, Helical Compression			Lip Seal .741 X .250 X .250 Tc
56	142978	Washer, Block Thrust			Oil Seal .625 X 1.0 X .25
57	----	20W-50 0 1 78.80oz			O-ring .07 X .301 ID
58	142929	Kit, Brake Yoke	128	173165	Kit, Expansion Tank
59	170408	Rotor, Brake			Tank, Expansion Assembly
60	142883	Brake Puck			Cap, Vent
--	142882	Brake Puck Plate			Vsbolt, Self Tapping 10-32 X 1/2
62	170409	Pin, Brake Actuating			Bracket, Support Expansion Tank
63	170410	Hfhs 1/4-20 X 2 W/patch, Special Flange	129	191032	Cap, Expansion Tank Shipping
65	170411	Spacer, Brake Torsion Spring	900	170061	Transaxle
66	188297	Spring, Brake Arm Bias			

NOTE: All Component Dimensions Given In U.S. Inches
1 Inch = 25.4 mm

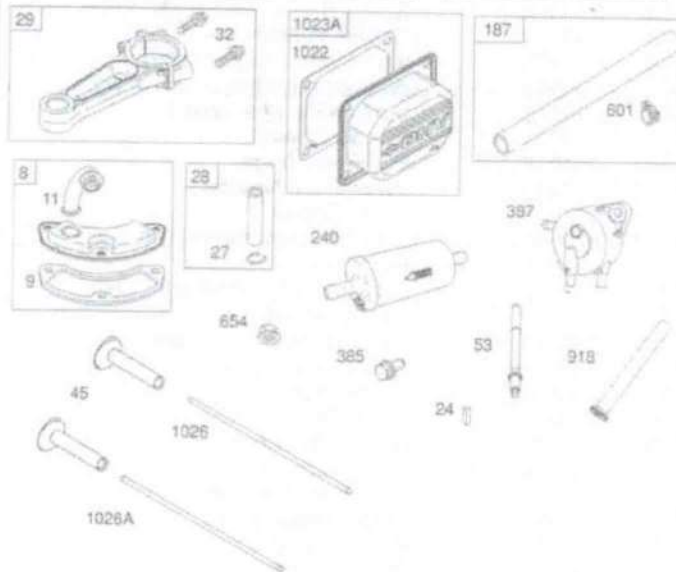
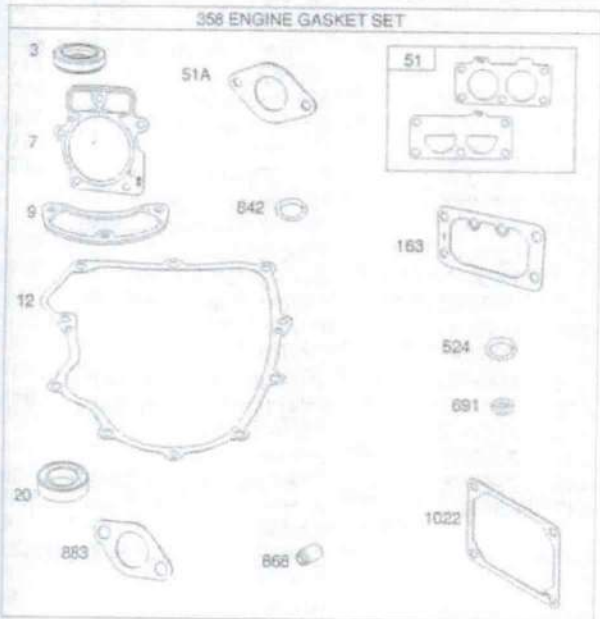
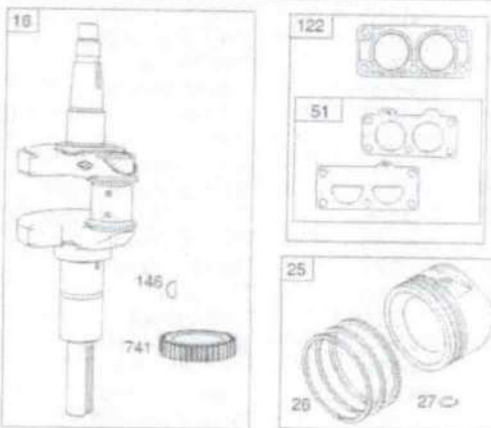
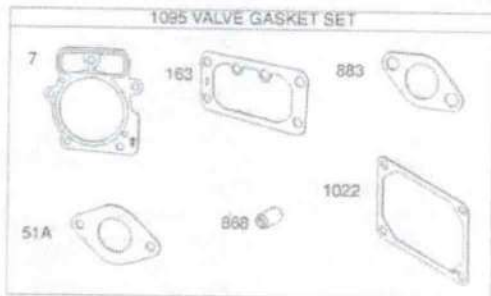
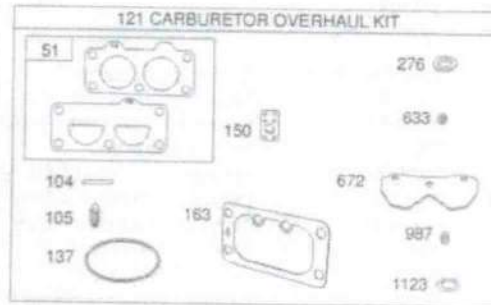
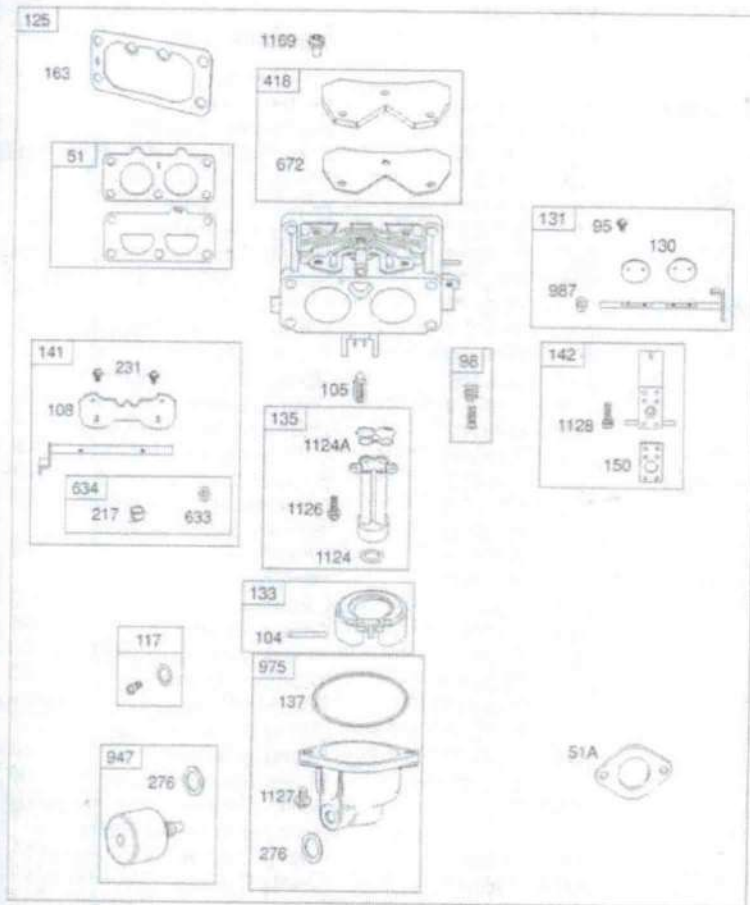
TRACTOR- -MODEL NO. 917.254601

BRIGGS & STRATTON ENGINE - - MODEL NUMBER 49M777, TYPE NUMBER 1460-G1

48 SHORT BLOCK
1058 OPERATOR'S MANUAL
1329 REPLACEMENT ENGINE
1330 REPAIR MANUAL



TRACTOR--MODEL NO. 917.254601
BRIGGS & STRATTON ENGINE -- MODEL NUMBER 49M777, TYPE NUMBER 1460-G1



TRACTOR- -MODEL NO. 917.254601

BRIGGS & STRATTON ENGINE - - MODEL NUMBER 49M777, TYPE NUMBER 1460-G1

KEY NO.	PART NO.	DESCRIPTION	KEY NO.	PART NO.	DESCRIPTION
1	796908	Cylinder Assembly	146	690979	Key-Timing
2	499585	Bushing/Seal Kit (Magneto Side)	150	690995	Gasket-Nozzle
3	391086s	Seal-Oil (Magneto Side)	163	691001	Gasket-Air Cleaner
4	797502	Sump-Engine	187	791766	Line-Fuel (Cutto Required Length)
5	796270	Head-Cylinder (Cylinder #1)	188	697551	Screw (Control Bracket)
5A	796271	Head-Cylinder (Cylinder #2)	192	690083	Adjuster-Rocker Arm
7	796851	Gasket-Cylinder Head	197	697820	Screw (Back Plate)
8	792185	Breather Assembly	209	796224	Spring-Governor (Yellow/Black)
9	690937	Gasket-Breather	211	796225	Spring-Governed Idle (Orange)
10	697551	Screw (Breather Assembly)	212	695238	Link-Throttle
11	792184	Tube-Breather	213	691021	Bracket-Choke Control
12	697227	Gasket-Crankcase	216	691022	Link-Choke
13	793988	Screw (Cylinder Head)	217	695409	Spring-Choke Return
15	690946	Plug-Oil Drain	219	793338	Gear-Governor
16	796857	Crankshaft	220	690412	Washer (Governor Gear)
20	795387	Seal-Oil (PTO Side)	221	841026	Cup-Governor
22	694966	Screw (Crankcase Cover/Sump)	222	796630	Bracket-Control
23	691053	Flywheel	227	796223	Lever-Governor Control
24	796335	Key-Flywheel	231	690718	Screw (Choke Valve)
25	796909	Piston Assembly (Standard)	240	695666	Filter-Fuel
	796910	Piston Assembly (.020" Oversize)	250	690957	Retainer-Breather
26	796911	Ring Set (Standard)	252	794389	Collector-Oil
	796912	Ring Set (.020" Oversize)	265	691024	Clamp-Casing
27	690975	Lock-Piston Pin	267	792629	Screw (Casing Clamp)
28	696581	Pin-Piston	276	695410	Washer-Sealing
29	796209	Rod-Connecting	278	792651	Washer (Governor Control Lever)
32	690976	Screw (Connecting Rod)	287	697551	Screw (Dipstick Tube)
33	793557	Valve-Exhaust	304	797407	Housing-Blower
34	793556	Valve-Intake	305	691005	Screw (Blower Housing)
35	694865	Spring-Valve (Intake)	305A	790690	Screw (Blower Housing) (Blower Housing to Intake Elbow)
36	694865	Spring-Valve (Exhaust)			Shield-Cylinder (Cylinder #1)
42	499586	Keeper-Valve	306	796852	Shield-Cylinder (Cylinder #2)
45	690977	Tappet-Valve	306A	796541	Screw (Cylinder Shield) (10-24x.43)
46	796853	Camshaft	307	691003	Screw (Cylinder Shield) (1/4-20x.62)
48	797511	Short Block			Motor-Starter
50	796878	Manifold-Intake	307A	697551	Screw (Starter Motor)
51	796876	Gasket-Intake			Brush Set
51A	690949	Gasket-Intake	309	499521	Nut (Flywheel)
53	690951	Stud (Carburetor)	310	691263	Armature-Magneto
54	699816	Screw (Intake Manifold)	311	497608	Screw (Magneto Armature)
73	494439	Screen-Rotating	332	691059	Plug-Spark
74	698425	Screw (Rotating Screen)	333	691060	Gasket Set-Engine
75	691056	Washer (Flywheel)	334	691061	Screw (Fuel Pump)
95	690718	Screw (Throttle Valve)	337	691043	Pump-Fuel
98	699721	Kit-Idle Speed	358	796917	Cooler-Oil
104	694918	Pin-Float Hinge	385	797409	Washer (Governor Crank)
105	797410	Valve-Float Needle	387	808656	Plug (Oil Pressure Switch Hole)
108	699723	Valve-Choke	400	796882	Plate-Carburetor
117	842633	Jet-Main (Standard) (Left and Right Jet)	404	690442	Elbow-Intake
		Jet-Main (High Altitude) (Left and Right Jet)	415	794903	Filter-Air Cleaner Cartridge
118	842082	Kit-Carburetor Overhaul	418	795912	Screw (Air Guide Cover) (10-24x.43)
121	796919	Spacer-Carburetor	431	792297	Screw (Air Guide Cover) (1/4-20x.62)
122	796877	Carburetor	445	792105	Bracket-Oil Cooler
125	796870	Valve-Throttle	447	691003	Knob-Air Cleaner
130	796875	Kit-Throttle Shaft	447A	697551	Alternator
131	796872	Float-Carburetor			Regulator
133	699724	Tube-Fuel Transfer	448	796865	Nut (Governor Control Lever)
135	699729	Gasket-Float Bowl	467	790697	
137	690994	Kit-Choke Shaft	474	696458	
141	796228	Nozzle-Carburetor	501	797375	
142	796871		505	691029	

TRACTOR- -MODEL NO. 917.254601

BRIGGS & STRATTON ENGINE - - MODEL NUMBER 49M777, TYPE NUMBER 1460-G1

KEY NO.	PART NO.	DESCRIPTION	KEY NO.	PART NO.	DESCRIPTION
510	696541	Drive-Starter	1022	690971	Gasket-Rocker Cover (Liquid Gasket and Rocker Cover Gasket are Interchangeable)
513	692024	Clutch-Drive			
523	691036	Dipstick	1023	793146	Cover-Rocker (Cylinder #1)
524	691032	Seal-Dipstick Tube	1023A	499600	Cover-Rocker (Cylinder #2)
525	691037	Tube-Dipstick	1024	796220	Pump-Oil
523	697551	Screw (Regulator)	1026	690981	Rod-Push (Steel) (Exhaust)
544		Armature-Starter (For Replacement, Order Starter Motor 499521, Reference 309)	1026A	690982	Rod-Push (Aluminum) (Intake)
			1027	696854	Filter-Oil
552	796638	Bushing-Governor Crank	1028	796864	Adapter-Oil Filter
552A	690553	Bushing-Governor Crank	1029	690972	Arm-Rocker
562	690311	Screw (Governor Control Lever)	1036		Label-Emissions (Available from a Briggs & Stratton Authorized Dealer)
573	790444	Plate-Back			
601	691038	Hose-Clamp (Black)	1040	791237	Plate-Trim
601A	841597	Hose-Clamp (Oil Cooler Hose)	1051	691265	Ring-Retaining
615	698290	Retainer-Governor Shaft	1054	280275	Tie-Cable
616	691045	Crank-Governor	1058	278776	Operator's Manual
633	699813	Seal-Choke/Throttle Shaft (Choke Shaft)	1059	698516	Kit-Screw/Washer (Alternator)
			1070	791680	Screw (Flywheel Fan)
634	698779	Spring/Seal Assembly (Choke Shaft)	1090	691293	Retainer-Brush
			1095	796920	Gasket Set-Valve
635	66538s	Boot-Spark Plug	1000	791959	Pivot-Rocker Arm
640	796913	Wire-Thermistor	1119	691183	Screw (Alternator)
654	690958	Nut (Carburetor)	1124	841653	Seal-O Ring (Fuel Transfer Tube)
668	691215	Spacer (Rotating Screen)	1124A	690988	Seal-O Ring (Fuel Transfer Tube)
668A	691500	Spacer (Rotating Screen)	1126	841653	Screw (Fuel Transfer Tube)
672	690234	Gasket-Carburetor Plate	1127	695407	Screw (Float Bowl)
691	790574	Seal-Governor Shaft	1128	690990	Screw (Carburetor Nozzle)
697	690372	Screw (Drive Cap)	1169	690990	Screw (Carburetor Cover Plate)
703	691010	Clip	1329	49M877-0037-E1	Replacement Engine
718	690959	Pin-Locating	1330		Repair Manual (Not Available At This Printing)
729	797454	Clip-Wire			
741	690980	Gear-Timing	1366	796866	Diverter-Oil Cooler
742	690328	Retainer-E Ring	1373	695629	Screw (Oil Cooler Bracket)
750	796208	Screw (Oil Pump Cover)	1374	796863	Seal-O Ring (Oil Cooler Diverter)
783	695708	Gear-Pinion			
789	797424	Harness-Wiring			
798	697890	Screw (Rocker Arm)			
801	691283	Cap-Drive			
802	691286	Cap-End			
803		Housing-Starter (For Replacement, Order Starter Motor 499521, Reference 309)			
829	796867	Hose-Oil Cooler			
842	691031	Seal-O Ring (Dipstick Tube)			
847	499602	Dipstick/Tube Assembly			
850	100106	Sealant-Liquid			
851	493880s	Terminal-Spark Plug			
865A	792286	Cover-Air Guide (Valley)			
868	690968	Seal-Valve			
883	690970	Gasket-Exhaust			
914	691127	Screw (Rocker Cover)			
918	797408	Hose-Vacuum			
943	796222	Seal-O Ring (Oil Pump Cover)			
947	841546	Solenoid-Fuel			
965	796221	Cover-Oil Pump			
967	792303	Filter-Pre Cleaner			
968	795120	Cover-Air Cleaner			
975	793592	Bowl-Fuel			
987	691000	Seal-Throttle Shaft			
1005	791236	Fan-Flywheel			
1017	796214	Screen-Oil Pump			

NOTE: All component dimensions given in U.S. inches
1 inch = 25.4 mm