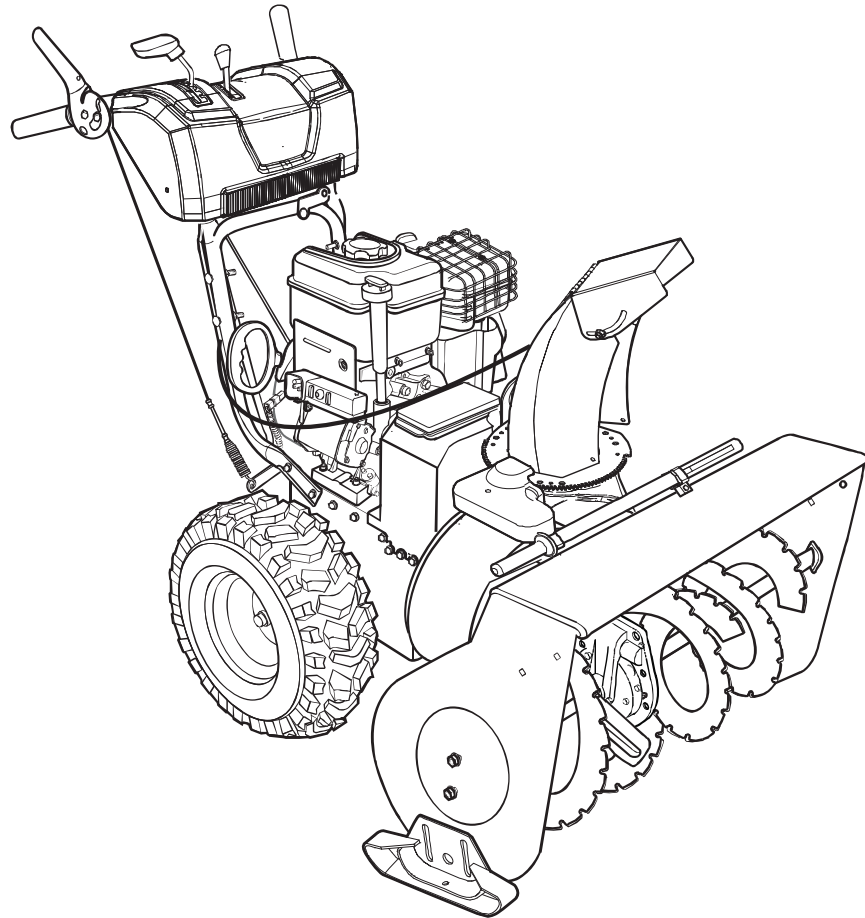


CANADIANA

Parts Manual



CM741450SE

29" Dual Stage Snowthrower

Models

Mfg. No.	Description
1696229-00	CM741450SE, Canadiana 14.5TP 29" Dual Stage Snowthrower (CE) (2012)

Manual Part No. 1755604

Revision -

Rev. Date: 7/13/2012

Not for
Reproduction

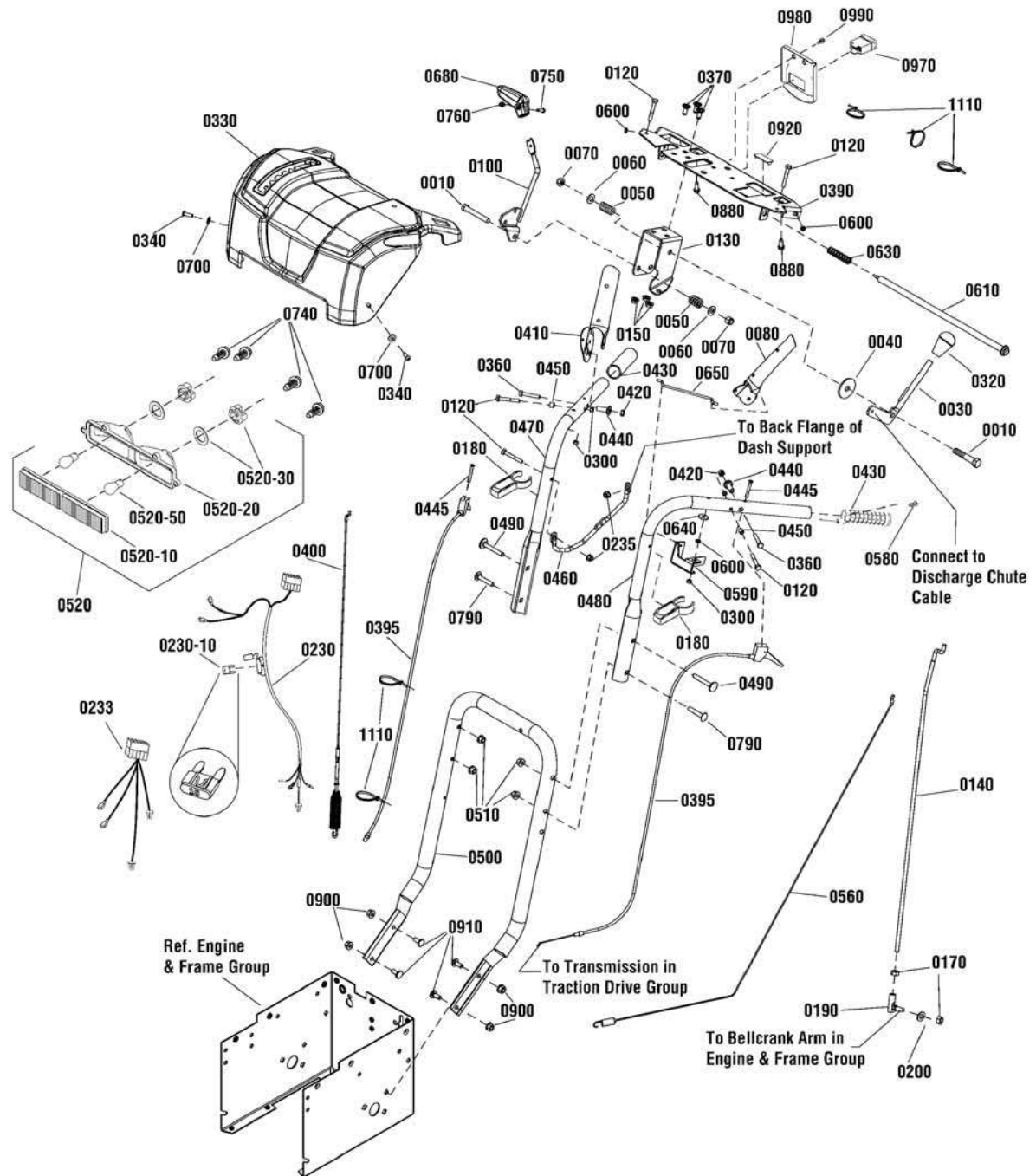
PRODUCT COMPONENTS	PAGES
Handles & Controls Group	4
Engine & Frame Group	8
Auger Drive Group	10
Auger Housing Group	12
Traction Drive Group	14
Wheels & Tires Group	16
Decals Group	18
Discharge Chute Group	20
Gear Case Assembly	22
Torque Specification Chart	Inside Back Cover

Not for
Reproduction

Handles & Controls Group

NOTE: Unless noted otherwise,
use the standard hardware torque
specification chart.

2990483



The above parts group applies to the following Mfg. Nos.:

1696229-00 - CM741450SE

Handles & Controls Group

REF NO	PART NO.	QTY.	DESCRIPTION
0010	1923701SM	2	CAPSCREW, Hex Head, 3/8-16 x 2, G5
0030	1736192YP	1	LEVER, Deflector Control
0040	1924356SM	1	WASHER, 3/8
0050	50786MA	2	SPRING, 3/4"
0060	1918266SM	2	WASHER, 3/8
0070	1919439SM	2	NUT, Hex Lock, ESNA Light, 3/8-16
0080	1739782AYP	1	LEVER, Clutch, LH
0100	1736836YP	1	LEVER, Speed
0120	1921962SM	4	CAPSCREW, Hex Head, 1/4-20 x 1-3/4, G5
0130	1737684YP	1	BRACKET, Controls
0140	1737331YP	1	ROD, Speed Control
0150	1931277SM	3	NUT, Hex Flange, Whiz Lock, 5/16-18
0170	2820263SM	1	NUT, Hex, 5/16-24
0180	1739487YP	2	BRACKET, Mounting
0190	1739290YP	1	BALLJOINT
0200	1917356SM	1	LOCKWASHER, Spring, 5/16
0230	1755059YP	1	HARNES
0230-10	----	1	* FUSE, Mini, 10 Amp (Included with Ref. No. 0230)
0233	1752164YP	1	HARNES, Heated Hand Grip, ON/OFF
0235	5025391SM	2	NUT, Hex Flange, Nylock, 1/4-20
0300	1920397SM	4	NUT, Hex Lock, ESNA Light, 1/4-20
0320	1732470SM	1	KNOB, 3/8-16
0330	1736951YP	1	DASH
0340	1960001SM	2	SCREW, Hex Washer Head, Plastite, 10-14 x 5/8
0360	1750554YP	2	BOLT, Shoulder, 10-24
0370	340720MA	3	BOLT, Carriage, 5/16-18 x 3/4
0390	1739500AYP	1	SUPPORT, Dash
0395	1737510YP	1	CABLE, Steering Control
0400	1737544YP	1	CABLE, Auger Drive
0410	1739783AYP	1	LEVER, Clutch, RH
0420	1933896SM	2	NUT, Hex Lock, Nylon Insert, 10-24
0430	1738124YP	2	HAND GRIP, Heated
0440	1736542YP	2	SPACER, Stepped
0445	7073145YP	2	BOLT, Oval Head, 10-24 x 1-1/2
0450	1678392SM	2	SPACER, 1/4 ID x 3/8 OD x 5/16"
0460	1737552YP	1	BRACE
0470	1737531AYP	1	HANDLE, Upper, RH
0480	1737532AYP	1	HANDLE, Upper, LH
0490	1960273SM	2	BOLT, Carriage, Short Neck, 5/16-18 x 2-1/4, G5
0500	1737274AYP	1	HANDLE, Lower
0510	1739305YP	2	NUT, Hex Flange, ESNA, 5/16-18
0520	1736176YP	1	HEADLIGHT ASSEMBLY
0520-10	----	1	LENS (Included in Ref. No. 0520)
0520-20	----	1	DEFLECTOR (Included in Ref. No. 0520)
0520-30	1736180YP	2	SOCKET & GASKET ASSEMBLY, Headlight (Included in Ref. No. 0520)

Footnotes

Note* See your local hardware store for replacement bulbs & fuses.

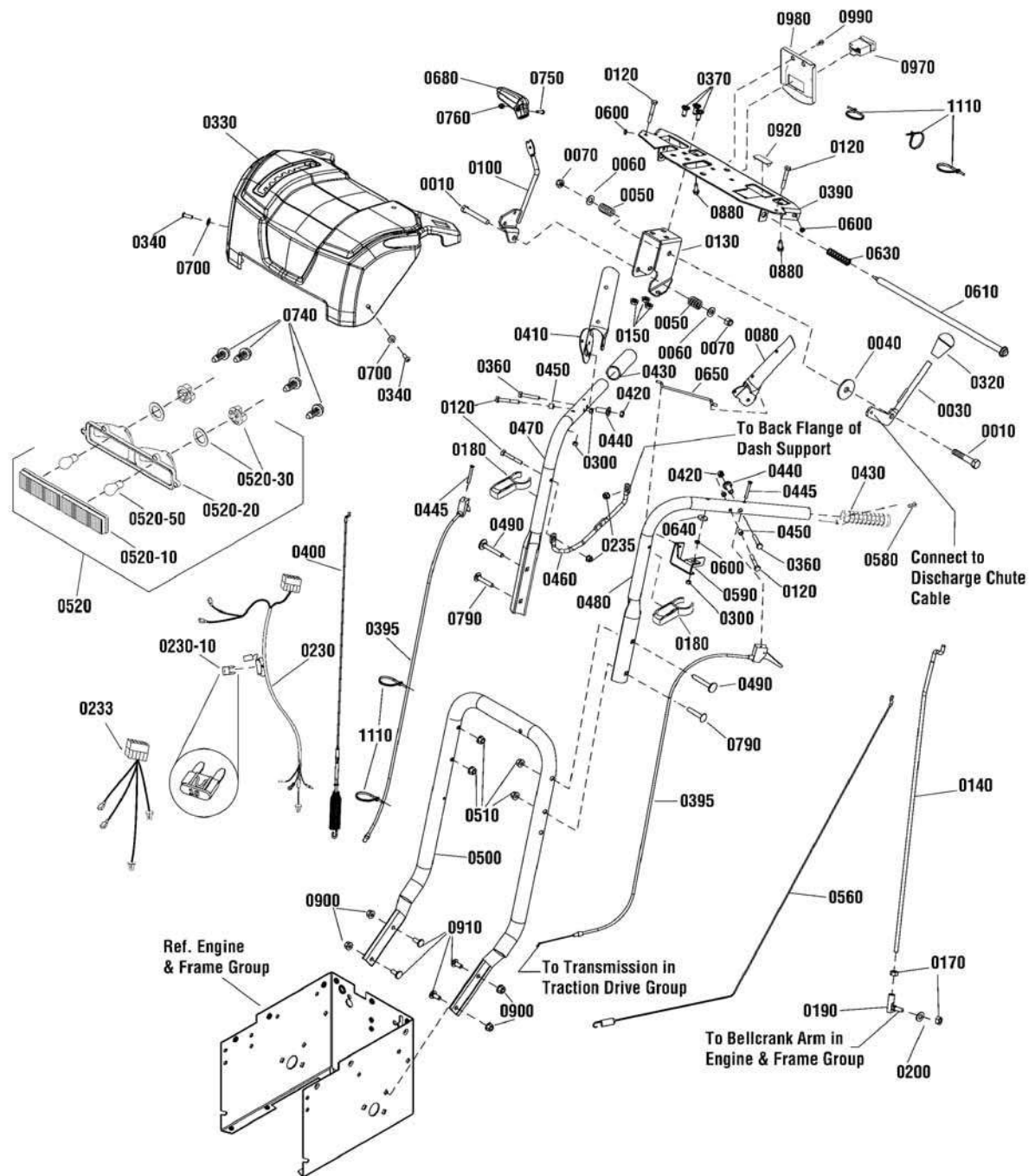
The above parts group applies to the following Mfg. Nos.:

1696229-00 - CM741450SE

Handles & Controls Group

NOTE: Unless noted otherwise,
use the standard hardware torque
specification chart.

2990483



The above parts group applies to the following Mfg. Nos.:

1696229-00 - CM741450SE

Handles & Controls Group

REF NO	PART NO.	QTY.	DESCRIPTION
0560	1737511YP	1	CABLE, Forward Drive
0580	703044	4	SCREW, 1/8-20 x 1/8
0590	1733505ASM	1	BRACKET, Pivot, Free Hand
0600	1733095SM	1	SPACER, 1/4 ID x 3/8 OD x 1/8"
0610	1733509SM	1	ROD & SPRING ASSEMBLY
0630	2108360SM	1	SPRING, Compression, 2-1/4"
0640	1960353SM	1	WASHER, 1/4
0650	1736360YP	1	ROD, Hold Down
0680	1733192SM	1	KNOB, Speed
0700	1921319SM	2	WASHER, 1/4
0740	7091105YP	4	SCREW, Hex Washer Head, #10-16 x 1/2
0750	1960589SM	1	SCREW, Phillips, #10-24 x 3/4
0760	1933896SM	1	NUT, Hex Lock, Nylon Insert, 10-24
0790	1931338SM	2	BOLT, Carriage, Short Neck, 5/16-18 x 1-3/4, G5
0880	7091081SM	2	SCREW, Hex Washer, 1/4-15 x 3/4
0900	1960684SM	4	NUT, Hex KEPS, 5/16-18
0910	340720MA	4	BOLT, Carriage, 5/16-18 x 3/4
0920	1709188SM	1	PLUG
0970	1752242YP	1	SWITCH, Heated Hand Grip
0980	1739861BMYP	1	BRACKET, Switch
0990	1960556SM	1	SCREW, Pan Head Torx, Taptite, 1/4-20 x 3/4
1110	1701011SM	3	TIE, Self Lock

Not for
Reproduction

Footnotes

Note* See your local hardware store for replacement bulbs & fuses.

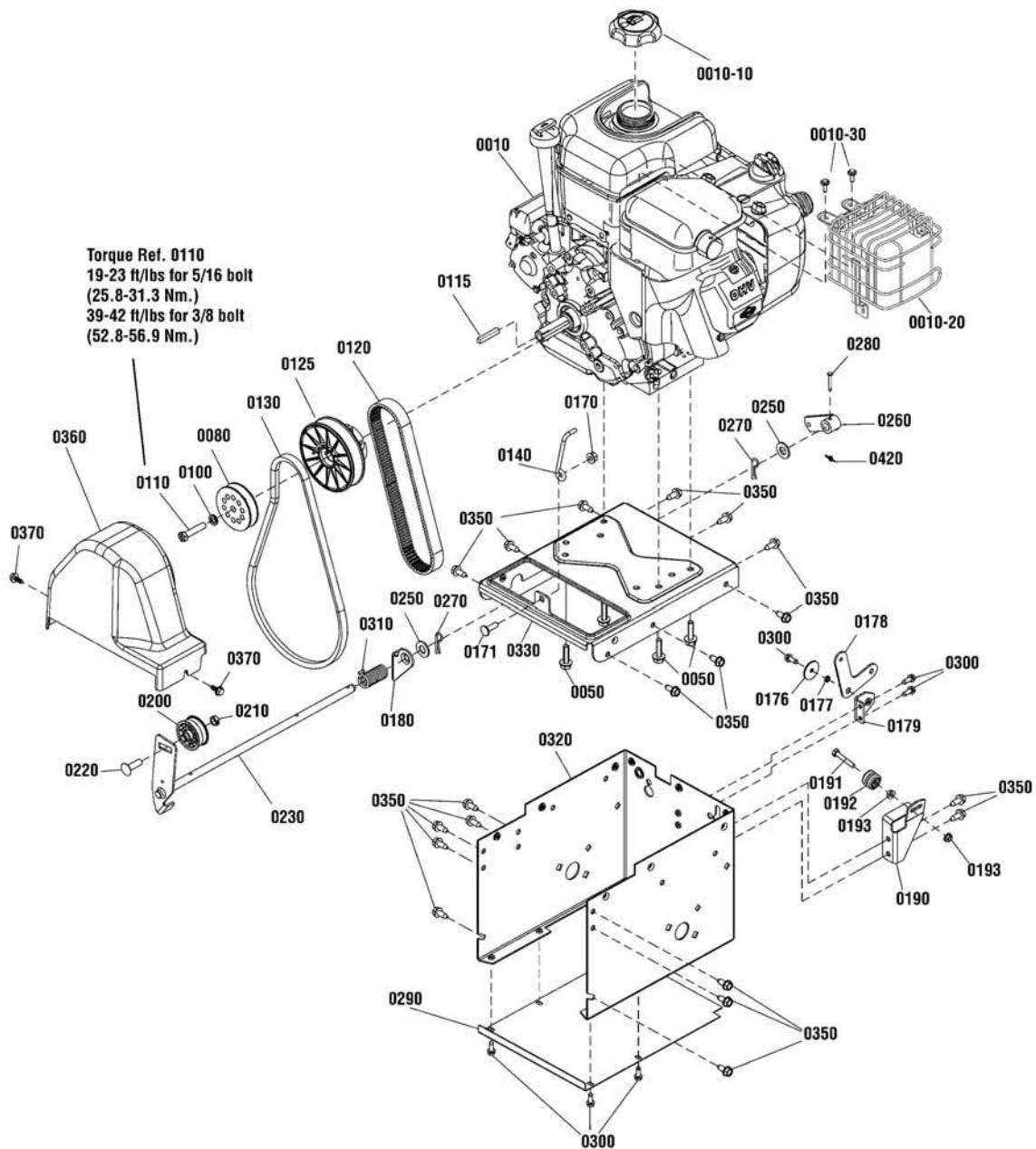
The above parts group applies to the following Mfg. Nos.:

1696229-00 - CM741450SE

Engine & Frame Group

NOTE: Unless noted otherwise,
use the standard hardware torque
specification chart.

2990628



The above parts group applies to the following Mfg. Nos.:
1696229-00 - CM741450SE

Engine & Frame Group

REF NO	PART NO.	QTY.	DESCRIPTION
0010	20M314-0141-H1	1	* ENGINE, 14.5TP Briggs & Stratton (Engine Model: 20M314-0141-H1)
0010-10	698109	1	CAP, Fuel
0010-20	796384	1	GUARD, Muffler
0010-30	699234	4	SCREW, Muffler Guard
0050	75246GS	4	CAPSCREW, Hex Head, Trilobular, 3/8-16 x 1-1/4
0080	1737509YP	1	PULLEY ASSEMBLY
0100	1916965SM	1	LOCKWASHER, Spring, 3/8
0110	2860768YP	1	CAPSCREW, Hex Head, 3/8-24 x 1-3/4, G8
0115	2157427SM	1	KEY, Parallel
0120	1737220YP	1	V-BELT, Multi Speed
0125	1733968YP	1	PULLEY ASSEMBLY
0130	585416MA	1	BELT, Auger, V4L 38.10 MF 05-10B
0140	1737377YP	1	STOP, Belt
0170	1960684SM	1	NUT, Hex KEPS, Conical Washer, 5/16-18
0171	1931335SM	1	BOLT, Carriage, 5/16-18 x 1 G5
0176	1960151SM	1	WASHER, 1/4 x 1-1/4 x 1/16
0177	1733095SM	1	SPACER, Powdered Metal
0178	1737329YP	1	BELLCRANK
0179	1737328AYP	1	BRACKET, Lower
0180	1737297YP	1	BRACKET, Support, Auger Idler
0190	1737347AYP	1	BRACKET, Guide Wheel
0191	1922837SM	1	CAPSCREW, Hex Head, 1/4-20 x 1-1/2 G5
0192	579860MA	1	SPOOL CABLE, Auger Control
0193	192432GS	2	NUT, Lock, Serrated, 1/4-20
0200	1502120MA	1	IDLER, Plastic, Ball Bearing
0210	1960251SM	1	NUT, Hex Jam, 3/8-16
0220	585781MA	1	BOLT, Carriage, 3/8-16 x 1-1/4
0230	1737296YP	1	IDLER, Auger
0250	1960027SM	2	WASHER, 1/2" Flat
0260	1733451SM	1	BRACKET & HUB ASSEMBLY, Spring
0270	0031X6MA	2	PIN, Hair
0280	1736381YP	1	PIN, Clevis
0290	1737221AYP	1	PANEL, Bottom
0300	1927429SM	7	SCREW, Hex Washer Head Taptite, 1/4-20 x 5/8
0310	1737350YP	1	SPRING, Torsional
0320	1737106BNYP	1	FRAME BOX
0330	1754138BNYP	1	PLATE, Engine Mount
0350	1664847SM	19	SCREW, Hex Washer Head Taptite, 5/16-18 x 3/4
0360	1750551YP	1	COVER, Belt
0370	1751355YP	2	SCREW, Hex Washer Head, SEMS, Taptite, 1/4-20 x 3/4
0420	7023590SM	1	COTTER PIN, 1/4" Self Locking

Footnotes

Note* To verify your specific engine model, please reference the ID Tag located on your engine. See your local Briggs & Stratton distributor for parts and service.

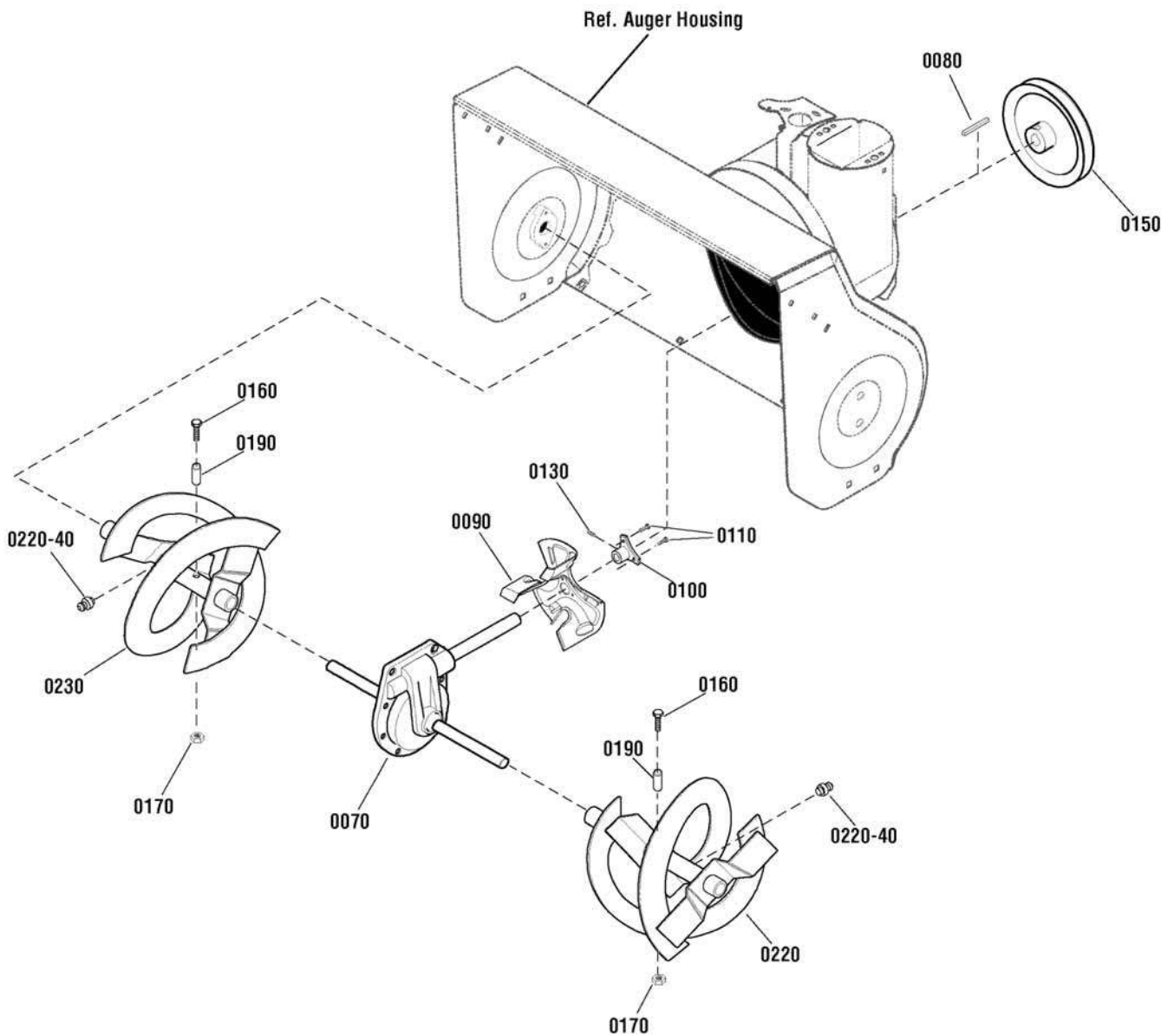
The above parts group applies to the following Mfg. Nos.:

1696229-00 - CM741450SE

Auger Drive Group

NOTE: Unless noted otherwise,
use the standard hardware torque
specification chart.

2989786



The above parts group applies to the following Mfg. Nos.:

1696229-00 - CM741450SE

Auger Drive Group

REF NO	PART NO.	QTY.	DESCRIPTION
0070	1752898YP	1	GEAR CASE ASSEMBLY, 29"
0080	2001022MA	1	KEY, Square, 3/16 x 3/4
0090	1739094AYP	1	IMPELLER
0100	1739073YP	1	HUB, Impeller
0110	1930601SM	3	SCREW, Hex Washer Head, Taptite, 5/16-18 x 5/8
0130	7090848SM	3	SET SCREW, Socket Head, 5/16-18 x 1/2
0150	1501211MA	1	PULLEY, 8.4 V4L .67 ID, Hybrid
0160	9524MA	2	CAPSCREW, Hex Head, 1/4-20 x 1-3/4
0170	73826MA	2	NUT, Hex Center Lock, 1/4-20
0190	3943MA	2	SPACER, Sleeve, 1/4 x 1/2"
0220	1738031AYP	1	AUGER, LH, 29" (Includes Ref. No. 0220-40)
0230	1738032AYP	1	AUGER, RH, 29" (Includes Ref. No. 0220-40)
0220-40	10104MA	2	FITTING, Grease
--	1501216MA	1	KIT, Shear Bolt (Includes Ref. Nos. 0160, 0170 & 0190)

Not for
Reproduction

Footnotes

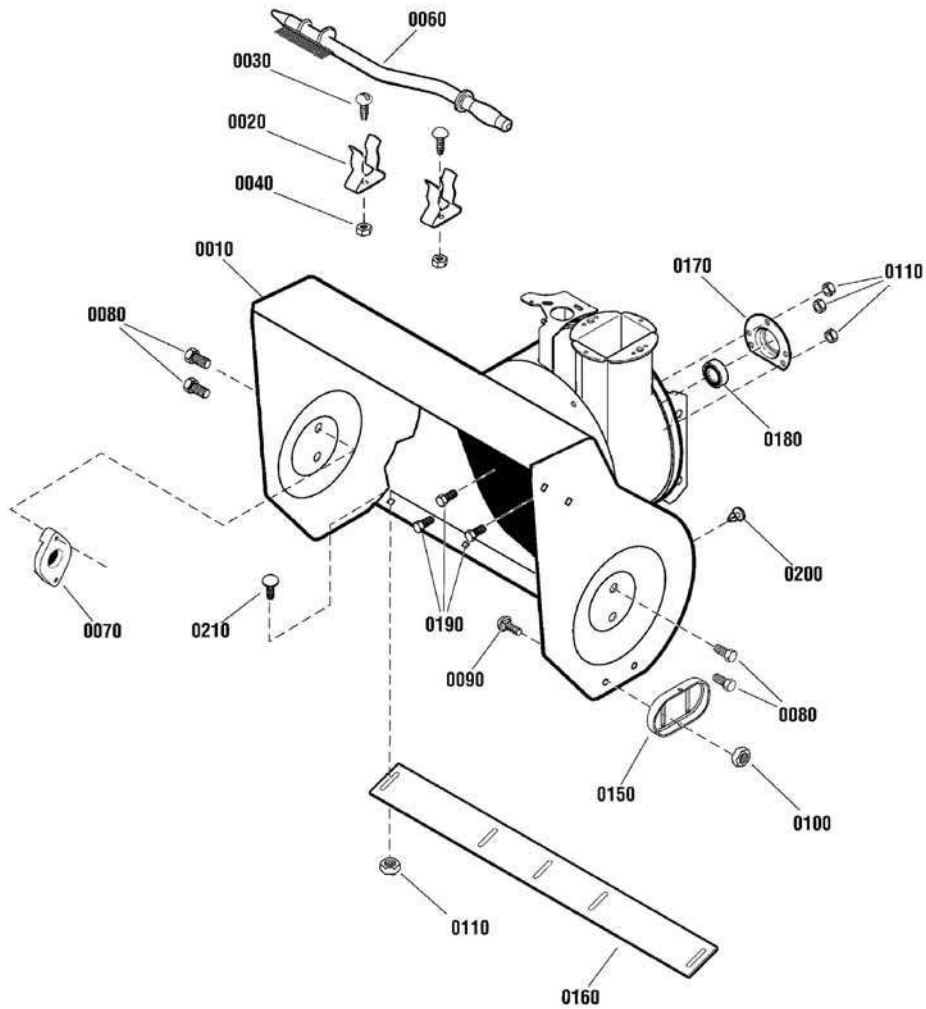
The above parts group applies to the following Mfg. Nos.:

1696229-00 - CM741450SE

Auger Housing Group

2990482

NOTE: Unless noted otherwise,
use the standard hardware torque
specification chart.



The above parts group applies to the following Mfg. Nos.:

1696229-00 - CM741450SE

Auger Housing Group

REF NO	PART NO.	QTY.	DESCRIPTION
0010	1687603YP	1	HOUSING, Auger, 29"
0020	1736620YP	2	CLIP, Retainer
0030	1960569SM	2	SCREW, Truss Head, Torx #10-24 x 3/8
0040	7091290SM	2	NUT, Hex Lock, Nylon, #10C
0060	1736094YP	1	BRUSH, Cleanout
0070	53757MA	2	BEARING, Auger
0080	25X021MA	6	CAPSCREW, Hex Head, 5/16-18 x 3/4
0090	7091790YP	4	BOLT, 3/8-16 x 1-1/4
0100	7091619SM	4	NUT, Hex Flange, 3/8-16
0110	1931277SM	7	NUT, Hex Flange, Whiz Lock, 5/16-18
0150	1750222YP	2	SKID SHOE, Reversable
0160	1740746AYP	1	BLADE, Scraper, 29
0170	582957YZMA	1	RETAINER, Ball Bearing
0180	1705897SM	1	BEARING, Ball
0190	001X45MA	3	BOLT, Hex, 5/16-18 x 5/8
0200	760040MA	2	PLUG, Panel
0210	7090799SM	4	BOLT, Carriage, 5/16-18 x 5/8, G5

Not for
Reproduction

Footnotes

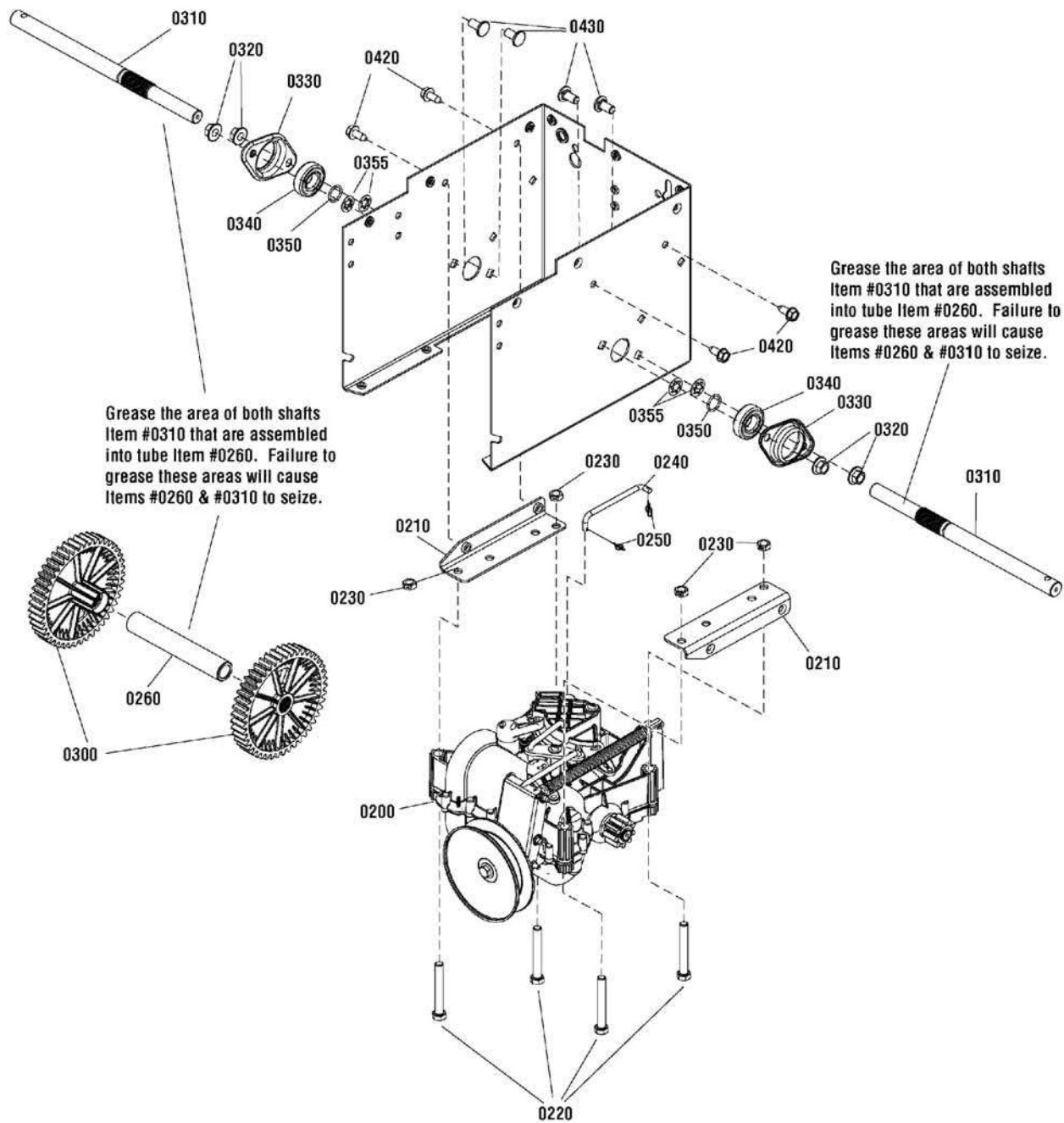
The above parts group applies to the following Mfg. Nos.:

1696229-00 - CM741450SE

Traction Drive Group

NOTE: Unless noted otherwise, use the standard hardware torque specification chart.

2987638



The above parts group applies to the following Mfg. Nos.:

1696229-00 - CM741450SE

Traction Drive Group

REF NO	PART NO.	QTY.	DESCRIPTION
0200	1733972YP	1	TRANSMISSION, General Transmission H2
0210	1737267AYP	2	BRACKET
0220	7091557SM	4	CAPSCREW, Hex Head, 3/8C x 2-3/4 GR5
0230	1960251SM	4	NUT, Hex Jam, 3/8-16
0240	1737330YP	1	ROD, Speed Select
0250	7023590SM	2	COTTER PIN, 1/4" Self Locking
0260	1737310YP	1	TUBE, Support
0300	1737311YP	2	GEAR, Drive
0310	1737309YP	2	AXLE
0320	1928352SM	4	NUT, Hex Flange, Whiz Lock Large, 3/8-16
0330	1736396YP	2	RETAINER, Bearing
0340	53263MA	2	BEARING, Ball
0350	1737742YP	2	RING, Retaining
0355	7013847YP	4	RETAINER, Bolt 3/8"
0420	1664847SM	4	SCREW, Hex Washer Head Taptite, 5/16-18 X 3/4
0430	1737686YP	4	BOLT, Carriage, FH GR 5, 3/8-16 x 3/4

Not for
Reproduction

Footnotes

Note* See Transmission Assembly Group for detailed service parts.

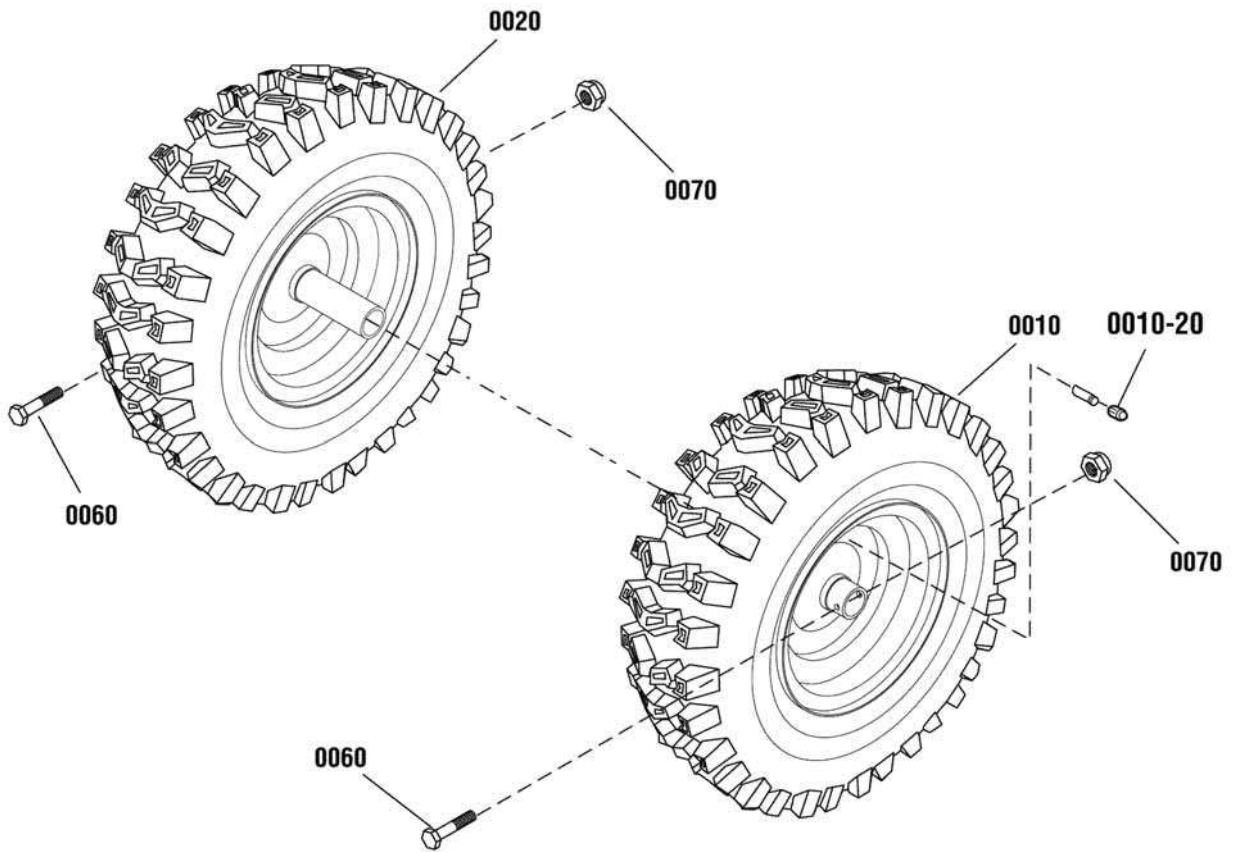
The above parts group applies to the following Mfg. Nos.:

1696229-00 - CM741450SE

Wheels & Tires Group

2990485

NOTE: Unless noted otherwise,
use the standard hardware torque
specification chart.



The above parts group applies to the following Mfg. Nos.:

1696229-00 - CM741450SE

Wheels & Tires Group

REF NO	PART NO.	QTY.	DESCRIPTION
0010	1754243YP	1	WHEEL & TIRE ASSEMBLY, 4.80-8, P2-407, LH (Includes Ref. 0010-20)
0020	1754245YP	1	WHEEL & TIRE ASSEMBLY, 4.80-8, P2-407, RH (Includes Ref. 0010-20)
0010-20	2172353SM	1	VALVE STEM & CAP
0060	577015MA	2	BOLT, Hex, 1/4-20 x 1-3/4, G5
0070	15X145MA	2	NUT, Hex, Nylock, 1/4-20

Not for
Reproduction

Footnotes

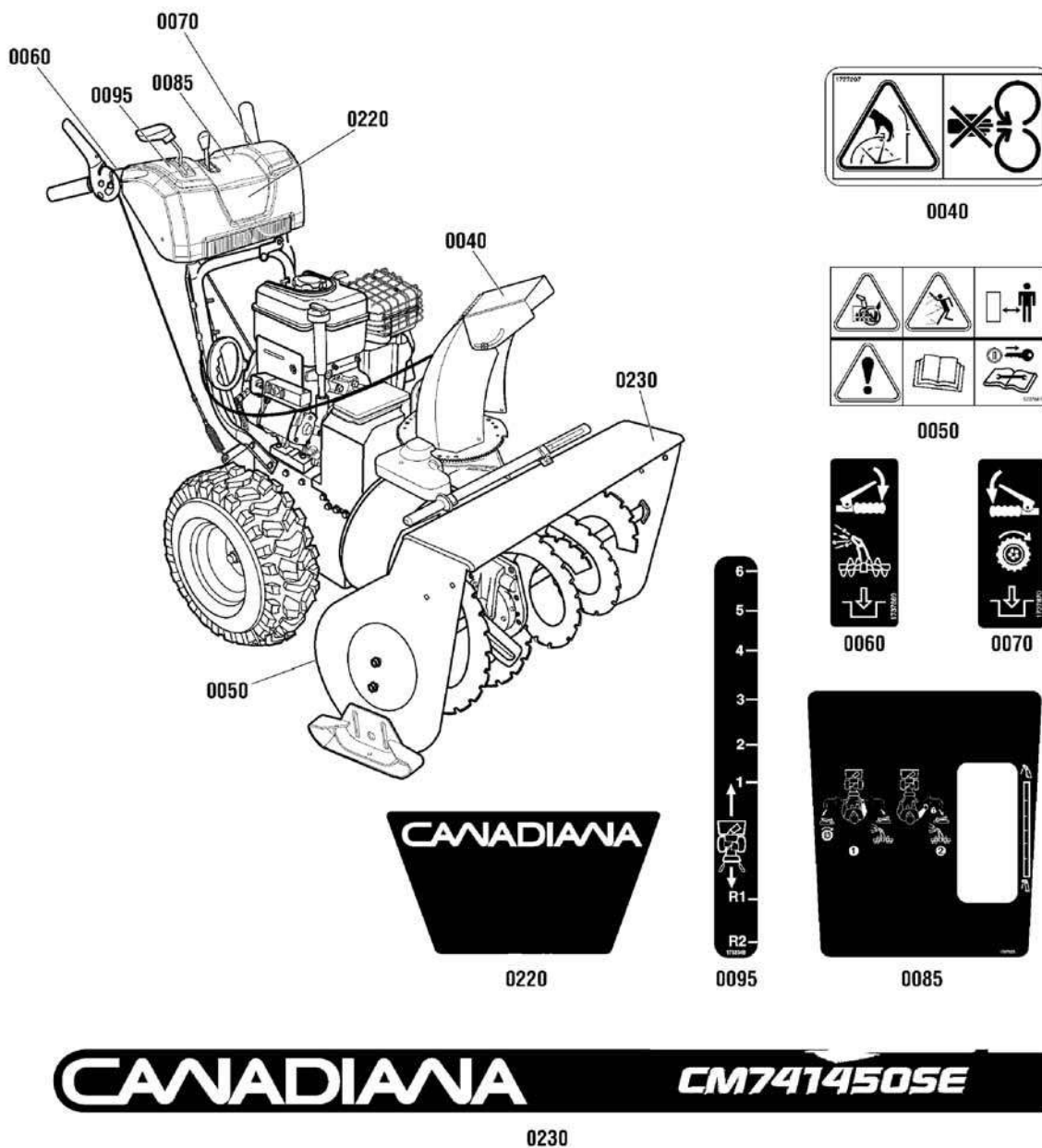
The above parts group applies to the following Mfg. Nos.:

1696229-00 - CM741450SE

Decals Group

NOTE: Unless noted otherwise, use the standard hardware torque specification chart.

2990484



The above parts group applies to the following Mfg. Nos.:
1696229-00 - CM741450SE

Decals Group

REF NO	PART NO.	QTY.	DESCRIPTION
0040	1727207SM	1	DECAL, Chute Warning
0050	1737867YP	1	DECAL, Danger Auger Icons
0060	1753133YP	1	DECAL, Auger Control Symbols
0070	1753134YP	1	DECAL, Traction Control Symbols
0085	1737875YP	1	DECAL, Controls
0095	1738349YP	1	DECAL, Speed Control
0220	1750433YP	1	DECAL, Logo, Dash
0230	1755049YP	1	DECAL, Logo, Auger

Not for
Reproduction

Footnotes

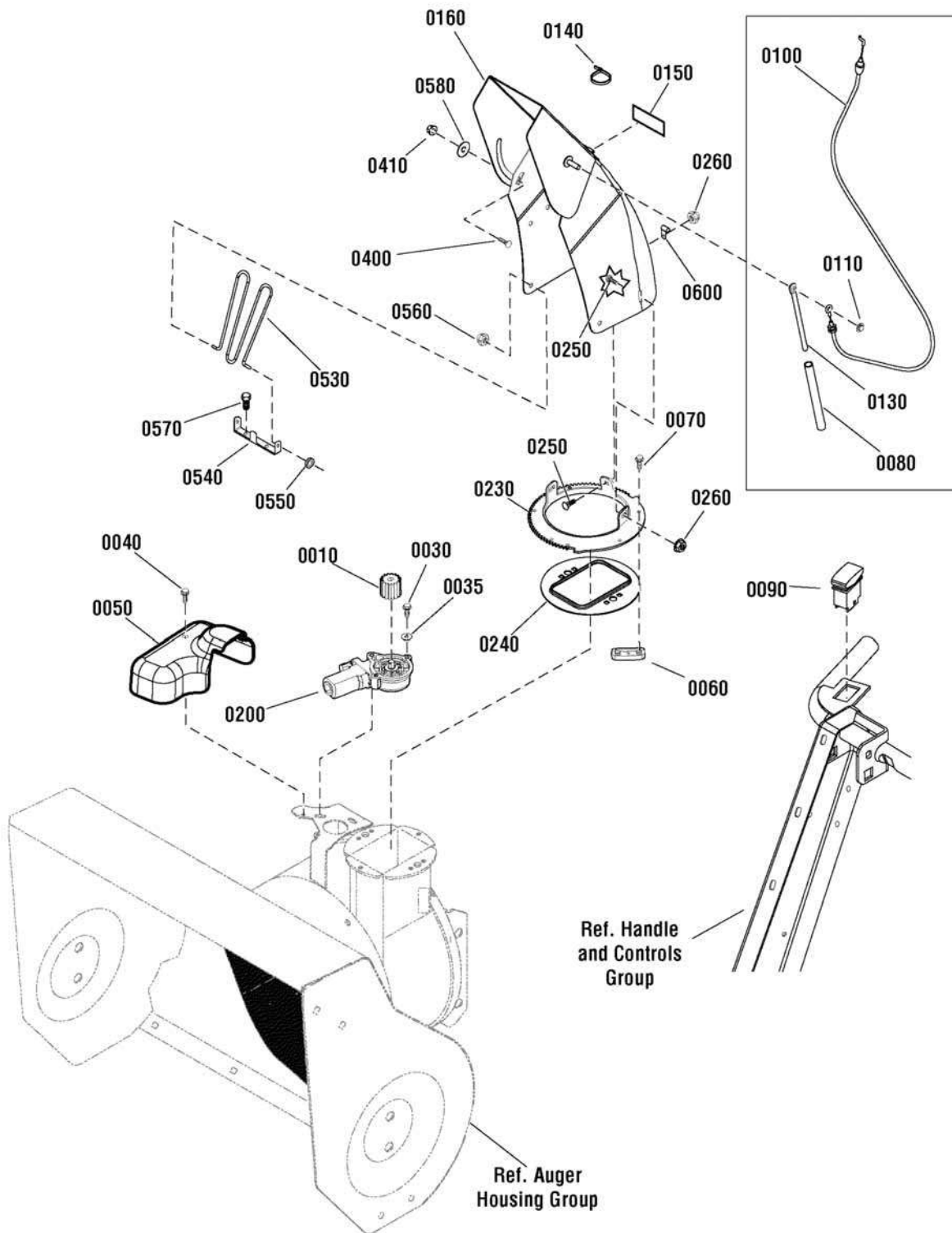
The above parts group applies to the following Mfg. Nos.:

1696229-00 - CM741450SE

Discharge Chute Group

NOTE: Unless noted otherwise,
use the standard hardware torque
specification chart.

2989787



The above parts group applies to the following Mfg. Nos.:

1696229-00 - CM741450SE

Discharge Chute Group

REF NO	PART NO.	QTY.	DESCRIPTION
0010	1728967SM	1	PINION
0030	1739621YP	3	SCREW, Button Head, Torx, M5 x .8 x 14
0035	7091552SM	3	WASHER, Flat, 1/4
0040	1925592SM	1	SCREW, Hex Washer Head, Taptite, 1/4-20 x 3/4
0050	1752877YP	1	COVER, Electric Chute Rotation
0060	7011938SM	3	RETAINER, Spout
0070	1960001SM	6	SCREW, Hex Washer Head, Plastite, 10-14 x 5/8
0080	1734647SM	1	SPRING, Compression, 6"
0090	1752240YP	1	SWITCH, Chute Rotation
0100	1750623YP	1	CABLE ASSEMBLY, Chute Deflector
0110	1932718SM	1	NUT, Push, 5/16
0130	1734708ASM	1	ROD, Spring Guide
0140	7012080SM	4	CABLE TIE
0150	1733601SM	2	DECAL, Hinge
0160	1737443AYP	1	CHUTE
0200	1739309YP	1	MOTOR, Chute Rotation
0230	1737465AYP	1	GEAR, Chute
0240	1737411YP	1	ADAPTER, Chute Ring
0250	02X101MA	4	BOLT, Carriage, 1/4-20 x 3/4
0260	1960685SM	4	NUT, Hex KEPS, 1/4-20
0400	1931333SM	1	BOLT, Carriage, Short Neck, 5/16-18 x 3/4, G5
0410	1739305YP	1	NUT, Hex Flange, ESNA, 5/16-18
0530	1733475SM	1	GUARD, Chute
0540	1737683YP	1	BRACKET, Chute Guard
0550	1738174YP	2	GROMMET
0560	1960140SM	2	NUT, Push, 3/16
0570	1925003SM	2	SCREW, Hex Washer Head, Taptite, 1/4-20 x 1/2
0580	2860210SM	1	WASHER, Nylon
0600	1739331YP	1	CLIP, Cable

Footnotes

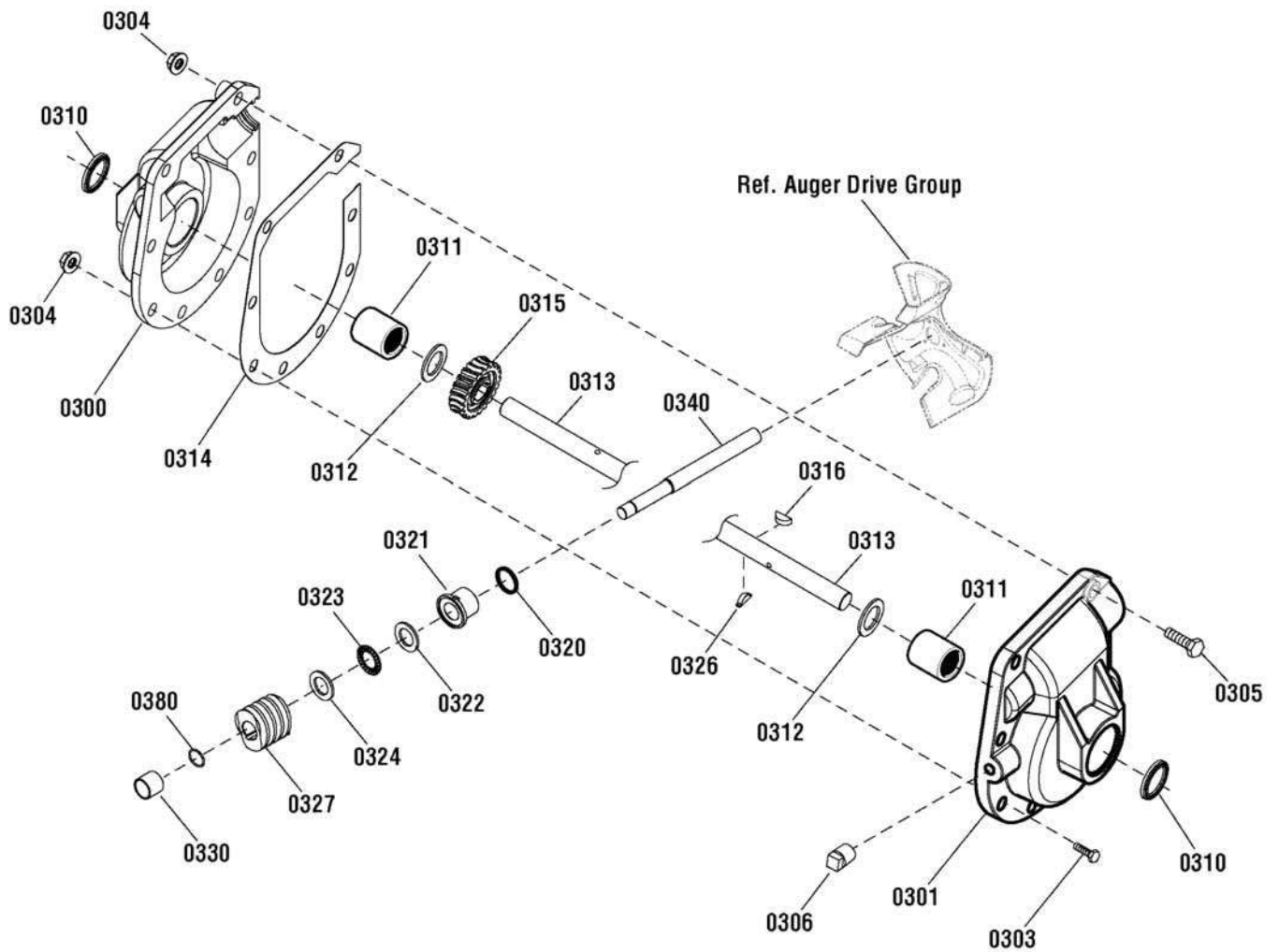
The above parts group applies to the following Mfg. Nos.:

1696229-00 - CM741450SE

Gear Case Assembly

NOTE: Unless noted otherwise,
use the standard hardware torque
specification chart.

1752897



The above parts group applies to the following Mfg. Nos.:
1696229-00 - CM741450SE

Gear Case Assembly

REF NO	PART NO.	QTY.	DESCRIPTION
0300	896MA	1	CASE, Gear, RH
0301	895MA	1	CASE, Gear, LH
0303	910828MA	7	BOLT, Hex, 5/16-24 x 1
0304	71100MA	8	NUT, Hex Flange, Serrated Lock, 5/16-24
0305	330434MA	1	CAPSCREW, Hex Head, 5/16-24
0306	53749MA	1	PLUG, Pipe
0310	780151MA	2	SEAL, Oil
0311	53743MA	2	BEARING, Sleeve, 1 x 1-1/4 x 1
0312	53748MA	2	WASHER, Flat, 1-1-1/2
0313	760528MA	1	SHAFT, Auger Out, 29"
0314	897MA	1	GASKET
0315	1752500YP	1	GEAR, Worm, 22T
0316	73905MA	1	KEY, Woodruff
0320	53737MA	1	RING, Quad
0321	583126MA	1	BEARING, Flange, 3/4 ID x 1-1/8 OD
0322	48275MA	1	WASHER, Thrust
0323	50684MA	1	BEARING, Roll Thrust, 3/4 ID x 1-1/4 OD
0324	48275MA	1	WASHER, Thrust
0326	50795MA	1	KEY, HI-PRO
0327	53732MA	1	WORMGEAR, 1-3/4 OD x 1-1/2"
0330	53731MA	1	BEARING, Sleeve, 3/4 ID x 7/8 OD
0340	1751535YP	1	SHAFT, Impeller
0380	1752515YP	1	RING, Retaining, 3/4

Not for
Reproduction

Footnotes

The above parts group applies to the following Mfg. Nos.:

1696229-00 - CM741450SE

Not for
Reproduction

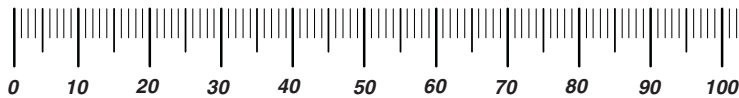
Not for
Reproduction

Not for
Reproduction

Hardware Identification & Torque Specifications

Torque Specification Chart								
FOR STANDARD METRIC MACHINE HARDWARE (Tolerance ± 20%)								
Property Class	5.6		8.8		10.9		12.9	
	Class 5.6		Class 8.8		Class 10.9		Class 12.9	
Size Of Hardware	in/lbs		in/lbs		in/lbs		in/lbs	
	ft/lbs	Nm.	ft/lbs	Nm.	ft/lbs	Nm.	ft/lbs	Nm.
M3	5.88	.56	13.44	1.28	19.2	1.80	22.92	2.15
M4	13.44	1.28	30.72	2.90	43.44	4.10	52.56	4.95
M5	26.4	2.50	60.96	5.75	5.97	8.10	7.15	9.7
M6	44.64	4.3	7.3	9.9	10.3	14	12.1	16.5
M7	5.2	7.1	12.1	16.5	16.9	23	19.9	27
M8	7.7	10.5	17.7	24	25	34	29	40
M10	15	21	35	48	50	67	59	81
M12	26	36	61	83	86.2	117	103	140
M14	42	58	101	132	136	185	162	220
M16	64	88	147	200	210	285	250	340
M18	89	121	202	275	287	390	346	470
M20	126	171	290	390	405	550	486	660
M22	169	230	390	530	559	745	656	890
M24	217	295	497	375	708	960	840	1140
M27	320	435	733	995	1032	1400	1239	1680
M30	435	590	995	1350	1401	1900	1681	2280
M33	590	800	1349	1830	1902	2580	2278	3090
M36	759	1030	1740	2360	2441	3310	2935	3980
M39	988	1340	2249	3050	3163	4290	3798	5150

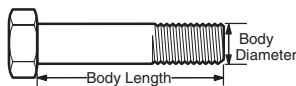
The guides and ruler furnished below are designed to help you select the appropriate hardware.



Nut, M8

Thread Diameter (mm)
Inside Diameter (in)
Threads per inch

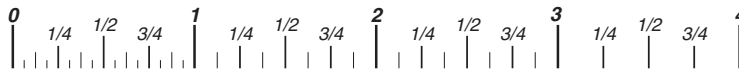
Nut, 1/2-16



Screw, M8- 1.25 x 25

Thread Diameter (mm)
Body Diameter
Distance between threads (mm)
Threads per inch
Body Length (mm)
Body Length (in)

Screw, 1/2- 16 x 2



Standard Hardware Sizing

When a washer or nut is identified as **1/2"** (M8), this is the *Nominal size*, meaning the *inside diameter* is 1/2 inch (8mm metric thread diameter); if a second number is present it represents the *threads per inch* (distance between threads).

When bolt or capscrew is identified as **1/2 - 16 x 2"** (M8 - 1.25 x 50), this means the *Nominal size*, or body diameter is 1/2 inch (8mm metric thread diameter), the second number, 16, represents the *threads per inch*, (*1.25 thread diameter*). The final number is the body length of the bolt or screw, 2 inches (50mm).

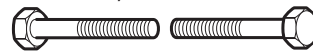
Torque Specification Chart						
FOR STANDARD MACHINE HARDWARE (Tolerance ± 20%)						
Hardware Grade	No Marks		SAE Grade 5		SAE Grade 8	
	SAE Grade 2		SAE Grade 5		SAE Grade 8	
Size Of Hardware	in/lbs		in/lbs		in/lbs	
	ft/lbs	Nm.	ft/lbs	Nm.	ft/lbs	Nm.
8-32	19	2.1	30	3.4	41	4.6
8-36	20	2.3	31	3.5	43	4.9
10-24	27	3.1	43	4.9	60	6.8
10-32	31	3.5	49	5.5	68	7.7
1/4-20	66	7.6	8	10.9	12	16.3
1/4-28	76	8.6	10	13.6	14	19.0
5/16-18	11	15.0	17	23.1	25	34.0
5/16-24	12	16.3	19	25.8	29	34.0
3/8-16	20	27.2	30	40.8	45	61.2
3/8-24	23	31.3	35	47.6	50	68.0
7/16-14	30	40.8	50	68.0	70	95.2
7/16-20	35	47.6	55	74.8	80	108.8
1/2-13	50	68.0	75	102.0	110	149.6
1/2-20	55	74.8	90	122.4	120	163.2
9/16-12	65	88.4	110	149.6	150	204.0
9/16-18	75	102.0	120	163.2	170	231.2
5/8-11	90	122.4	150	204.0	220	299.2
5/8-18	100	136	180	244.8	240	326.4
3/4-10	160	217.6	260	353.6	386	525.0
3/4-16	180	244.8	300	408.0	420	571.2
7/8-9	140	190.4	400	544.0	600	816.0
7/8-14	155	210.8	440	598.4	660	897.6
1-8	220	299.2	580	788.8	900	1,244.0
1-12	240	326.4	640	870.4	1,000	1,360.0

NOTES

- These torque values are to be used for all hardware excluding: locknuts, self-tapping screws, thread forming screws, sheet metal screws and socket head setscrews.
- Recommended seating torque values for locknuts:
 - for prevailing torque locknuts - use 65% of grade 5 torques.
 - for flange whizlock nuts and screws - use 135% of grade 5 torques.
- Unless otherwise noted on assembly drawings, all torque values must meet this specification.

Common Hardware Types

Hex Head Capscrew

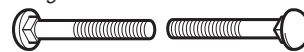


Washer



Lockwasher

Carriage Bolt



Hex Nut

Wrench & Fastener Size Guide

1/4" Bolt or Nut Wrench—7/16"	5/16" Bolt or Nut Wrench—1/2"	3/8" Bolt or Nut Wrench—9/16"	7/16" Bolt or Nut Wrench (Bolt)—5/8" Wrench (Nut)—11/16"	1/2" Bolt or Nut Wrench—3/4"
M6 Bolt or Nut Wrench—10mm	M8 Bolt or Nut Wrench—13mm	M10 Bolt or Nut Wrench—17mm	M12 Bolt or Nut Wrench—19mm	M14 Bolt or Nut Wrench—22mm

CANADIANA

Not for
Reproduction

**IT IS THE POLICY OF BRIGGS & STRATTON CORP. TO IMPROVE ITS PRODUCTS
WHENEVER IT IS POSSIBLE AND PRACTICAL TO DO SO. WE RESERVE THE RIGHT TO
MAKE CHANGES OR ADD IMPROVEMENTS AT ANY TIME WITHOUT INCURRING ANY
OBLIGATION TO MAKE SUCH CHANGES ON PRODUCTS.**

Briggs & Stratton Power Products Group

12301 W. Wirth Street
Wauwatosa, WI, 53222 USA

www.BRIGGSandSTRATTON.com
www.murray.com

© Copyright 2012 by Briggs & Stratton Corporation
Milwaukee, WI, USA. All rights reserved