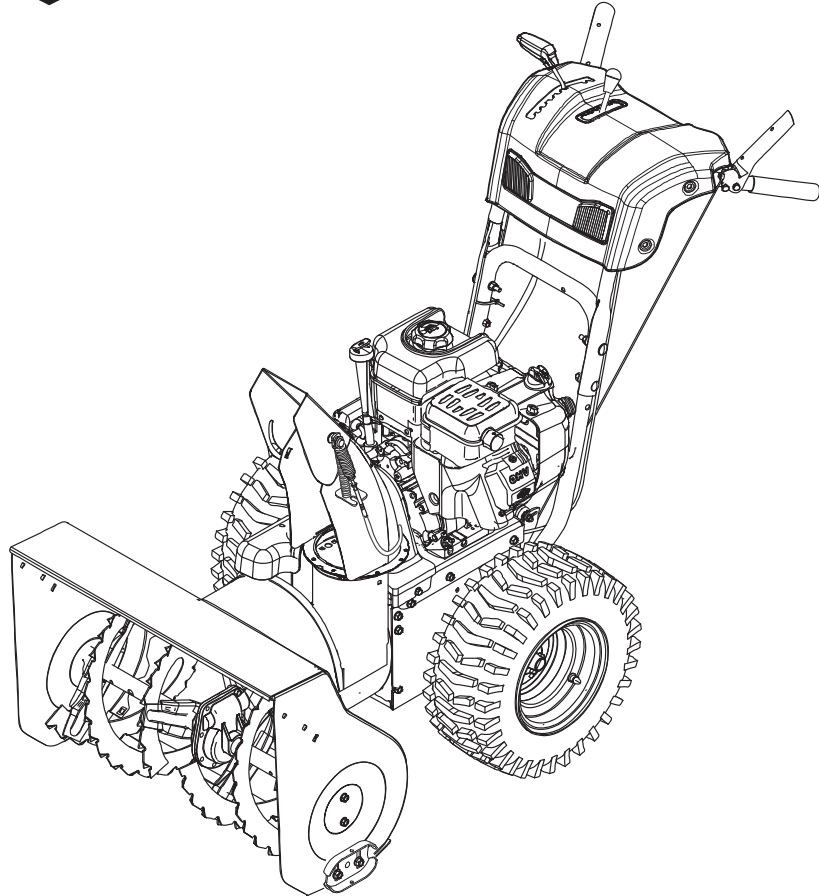




# Parts Manual



## 24" Dual Stage Snowthrowers

### Models

Mfg. No.	Description
1696155-00	924MD, 9TP 24" Dual Stage Snowthrower (2012)
1696254-00	MB924E, 9TP 24" Dual Stage Snowthrower (CE) (2012)

Manual Part No. 1755484

Revision -

Rev. Date: 6/20/2012

Not for  
Reproduction

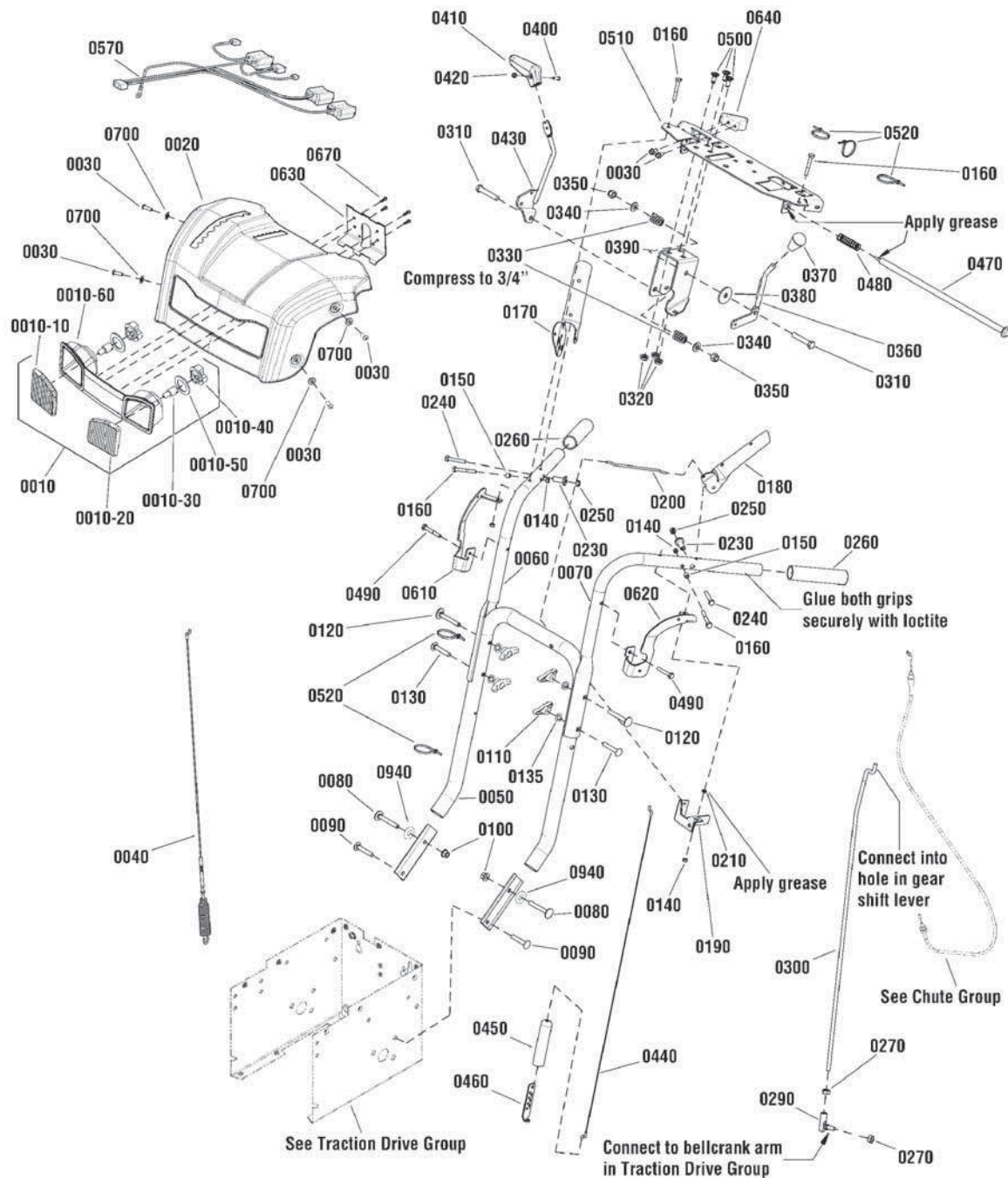
<b>PRODUCT COMPONENTS</b>	<b>PAGES</b>
Handles & Controls Group .....	4
Engine Group .....	8
Auger Housing Group .....	12
Auger Drive Group .....	14
Traction Drive Group - Standard .....	16
Wheels & Tires Group .....	18
Decals Group .....	20
Gear Case Assembly .....	22
Discharge Chute Group .....	24
<b>Torque Specification Chart .....</b>	<b>Inside Back Cover</b>

Not for  
Reproduction

## Handles & Controls Group

NOTE: Unless noted otherwise,  
use the standard hardware torque  
specification chart.

2990625



The above parts group applies to the following Mfg. Nos.:

1696155-00 - 924MD

1696254-00 - MB924E

## Handles & Controls Group

REF NO	PART NO.	QTY.	DESCRIPTION
0010	1739686YP	1	LIGHT BAR ASSEMBLY
0010-10	-----	1	LENS, RH (Not a serviceable part, included with Ref. No. 0010)
0010-20	-----	1	LENS, LH (Not a serviceable part, included with Ref. No. 0010)
0010-30	1739689YP	2	LAMP, Halogen, 12V 20W
0010-40	1736180YP	2	SOCKET & GASKET ASSEMBLY, Headlight
0010-50	-----	2	GASKET, Single, Twin Light (Not a serviceable part, included with Ref. No. 0010-40)
0010-60	-----	1	BEZEL, Light, Panel (Not a serviceable part, included with Ref. No. 0010)
0020	1739860BSYP	1	COVER, Panel, Remote Deflector
0030	1960556SM	4	SCREW, Pan Head, Torx, 1/4-20 x 3/4, Taptite
0040	1732471SM	1	CABLE & SPRING ASSEMBLY, Auger Drive, RH
0050	1737274AYP	1	HANDLE, Lower
0060	1737531AYP	1	HANDLE, Upper, R.H.
0070	1737532AYP	1	HANDLE, Upper, L.H.
0080	1921333SM	2	CAPSCREW, Hex Head, 5/16-18 x 1, G5
0090	1664847SM	2	CAPSCREW, Hex Washer Head Taptite, 5/16-18 x 3/4
0100	1935048SM	2	NUT, Hex Flange Two Way Locking, 5/16-18
0110	7035744YP	2	WINGKNOB, 5/16-18
0120	1750299YP	2	BOLT, Carriage, Locking, 5/16-18 x 2-1/4
0130	7091189YP	2	BOLT, Carriage. 5/16-18 x 2, G2
0135	7090391SM	2	Washer, Locking, Internal Teeth, 5/16
0140	1920397SM	4	NUT, Hex Lock, 1/4-20
0150	1678392SM	2	SPACER, 17/64 ID x 3/8 OD x 11/32 Lg
0160	1921962SM	4	CAPSCREW, Hex Head, 1/4-20 x 1-3/4, G5
0170	1739783BMYP	1	LEVER, Clutch, RH
0180	1739782BMYP	1	LEVER, Clutch, LH
0190	1733505BMYP	1	BRKT, Pivot, Free Hand
0200	1736360YP	1	ROD, Hold Down, 5/32 Dia., 5-5/8 Lg
0210	1733095SM	1	SPACER, 1/4 ID
0230	1736542YP	2	SPACER, Stepped
0240	1750554YP	2	BOLT, Shoulder, Hex Washer Head, 1/4 x 1-9/32
0250	1933896SM	2	NUT, Nylock, 10-24
0260	1726317SM	2	HAND GRIP
0270	2820263SM	1	NUT, Hex, 5/16-24
0290	1739290YP	1	BALL JOINT, Quick Release
0300	1734354SM	1	ROD, 9/32 Dia. X 25-3/8 Lg
0310	1923701SM	2	CAPSCREW, Hex Head, 3/8-16 x 2, G5
0320	1931277SM	3	NUT, Hex Flange Whiz Lock, 5/16-18
0330	50786MA	2	SPRING, 1/2 Dia. x 3/4
0340	1918266SM	2	WASHER, 3/8 x 13/16 OD
0350	1919439SM	2	NUT, Hex Lock, 3/8-16
0360	1736192YP	1	LEVER, Deflector Control
0370	1732470SM	1	KNOB, Deflector Control
0380	1924356SM	1	WASHER, 1/2

### Footnotes

The above parts group applies to the following Mfg. Nos.:

1696155-00 - 924MD  
1696254-00 - MB924E



## Handles & Controls Group

REF NO	PART NO.	QTY.	DESCRIPTION
0390	1737684YP	1	BRACKET, Controls
0400	1960589SM	1	SCREW, Round Head Phillips, #10-24 x 3/4
0410	1733192SM	1	KNOB, Slot Speed
0420	1933896SM	1	NUT, Nylock, 10-24
0430	1736836YP	1	SPEED LEVER ASSEMBLY
0440	1502113MA	1	CABLE, Handle
0450	308146MA	1	BOOT, Spring End Cover, 4-1/16 Lg
0460	313441MA	1	BRACKET, Cable Adjusting
0470	1736363YP	1	ROD & SPRING ASSEMBLY
0480	2108360SM	1	SPRING, Compression, 017/32 ID x 2-1/4 Lg
0490	1921962SM	2	CAPSCREW, Hex Washer Head, Taptite, 1/4-20 x 1-3/4
0500	1931333SM	3	BOLT, Carriage, 5/16-18 x 3/4
0510	1739500BMYP	1	SUPPORT, Dash
0520	1701011SM	5	TIE, SELF LOCKING, 7-5/16 Lg
0570	1750773YP	1	HARNESS
0610	1739663BMYP	1	BRACKET, Mounting, Dash, R.H.
0620	1739664BMYP	1	BRACKET, Mounting, Dash, L.H.
0630	1739666BMYP	1	BRACKET, Light Mounting
0640	1739483AYP	1	POD, Chute Rotation, RH
0670	7091105YP	4	SCREW, Hex Washer Machine, #10-16 x 1/2
0700	1921319SM	4	WASHER, 1/4 x 5/8 OD
0940	71071MA	2	WASHER, 11/32 x 11/16 OD

Not for  
Reproduction

### Footnotes

The above parts group applies to the following Mfg. Nos.:

1696155-00 - 924MD  
1696254-00 - MB924E





## Engine Group

REF NO	PART NO.	QTY.	DESCRIPTION
0010	12D107-0167-F8	1	* ENGINE, 9TP Briggs & Stratton, Export (Engine Model: 12D107-0167-F8)
0010	12D107-0163-F8	1	* ENGINE, 9TP Briggs & Stratton, Domestic (Engine Model: 12D107-0163-F8)
0010-10	793193	1	GUARD, Muffler, Wire (Export Models)
0010-10	797003	1	GUARD, Muffler, Plate (Domestic models) (Not Illustrated)
0010-20	699854	3	SCREW, Muffler Guard
0010-30	792647	1	CAP, Fuel
0050	75246GS	4	SCREW, Hex Head, Trilobular, 3/8-16 x 1-1/4
0090	1739514YP	1	PULLEY ASSEMBLY
0100	1919381SM	3	WASHER, 5/16
0110	910828MA	1	BOLT, Hex, 5/16-24 x 1
0120	1733324SM	1	V-BELT, Traction Drive, 3L 33.13
0130	585416MA	1	BELT, Auger, V4L 38.10 MF 05-10
0135	1750314YP	1	SEAL, Strip
0140	1737377YP	1	STOP, Belt
0150	1917356SM	4	LOCKWASHER, Spring
0160	1921515SM	2	CAPSCREW, Hex Head, 5/16-24 x 3/4, G5
0170	1739846YP	1	BRACKET, Idler
0171	1931335SM	1	BOLT, Carriage, 5/16-18 x 1, G5
0172	1960684SM	1	NUT, Hex KEPS, 5/16-18
0180	1501065MA	1	BUSHING, Idler Bracket
0190	165X164MA	1	SPRING, Extension, Idler
0200	1502120MA	2	IDLER, Plastic Ball Bearing
0205	7091299SM	1	NUT, Nylock, 3/8-16
0210	1960251SM	2	NUT, Hex Centerlock Jam, 3/8-16
0220	585781MA	1	BOLT, Carriage, 3/8-16 x 1-1/4, G5
0230	1739574YP	1	IDLER, Auger
0240	1739964YP	1	SPACER, Auger Bracket
0250	1960027SM	1	WASHER, 1/2
0260	1733451SM	1	ARM, Control
0270	0031X6MA	1	PIN, Hair
0280	1736381YP	1	PIN, Clevis
0290	1737221AYP	1	PANEL, Bottom
0300	1927429SM	12	SCREW, Hex Washer Head, Taptite, 1/4-20 x 5/8
0310	165X159MA	1	SPRING, Extension, Auger
0320	1739107BSYP	1	FRAME BOX
0325	1739093AYP	1	BRACKET, Auger and Traction Rod Mount
0330	1754138BSYP	1	PLATE, Engine
0350	1664847SM	19	CAPSCREW, Hex Washer Head, Taptite, 5/16-18 x 3/4
0360	1750551YP	1	COVER, Belt
0370	26X306MA	2	SCREW, Hex Washer Head, 1/4 x 3/4
0390	1733868ASM	1	WATER SHIELD
0390-10	1733898SM	1	SEAL, Foam
0410	910828MA	1	BOLT, Hex, 5/16-24 x 1

### Footnotes

Note\* To verify your specific engine model, please reference the ID Tag located on your engine. See your local Briggs & Stratton distributor for parts and service.

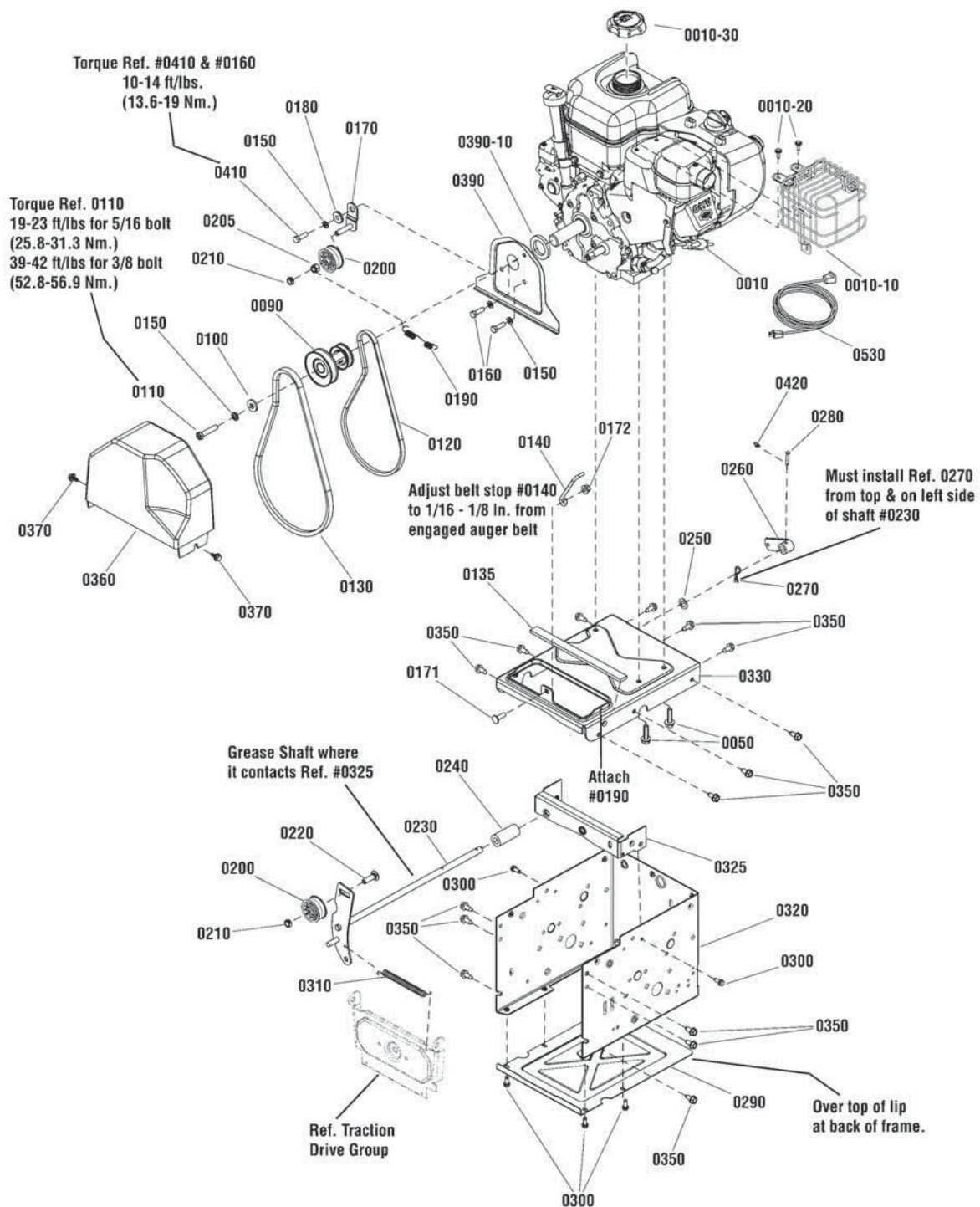
### The above parts group applies to the following Mfg. Nos.:

1696155-00 - 924MD  
1696254-00 - MB924E

## Engine Group

**NOTE:** Unless noted otherwise,  
use the standard hardware torque  
specification chart.

2990624



The above parts group applies to the following Mfg. Nos.:

1696155-00 - 924MD  
1696254-00 - MB924E

## Engine Group

---

REF NO	PART NO.	QTY.	DESCRIPTION
0420	7023590SM	1	PIN, Cotter, 1/4
0530	6219MA	1	CORD, Electric, 110V (Domestic models)

---

Not for  
Reproduction

### Footnotes

Note\* To verify your specific engine model, please reference the ID Tag located on your engine. See your local Briggs & Stratton distributor for parts and service.

---

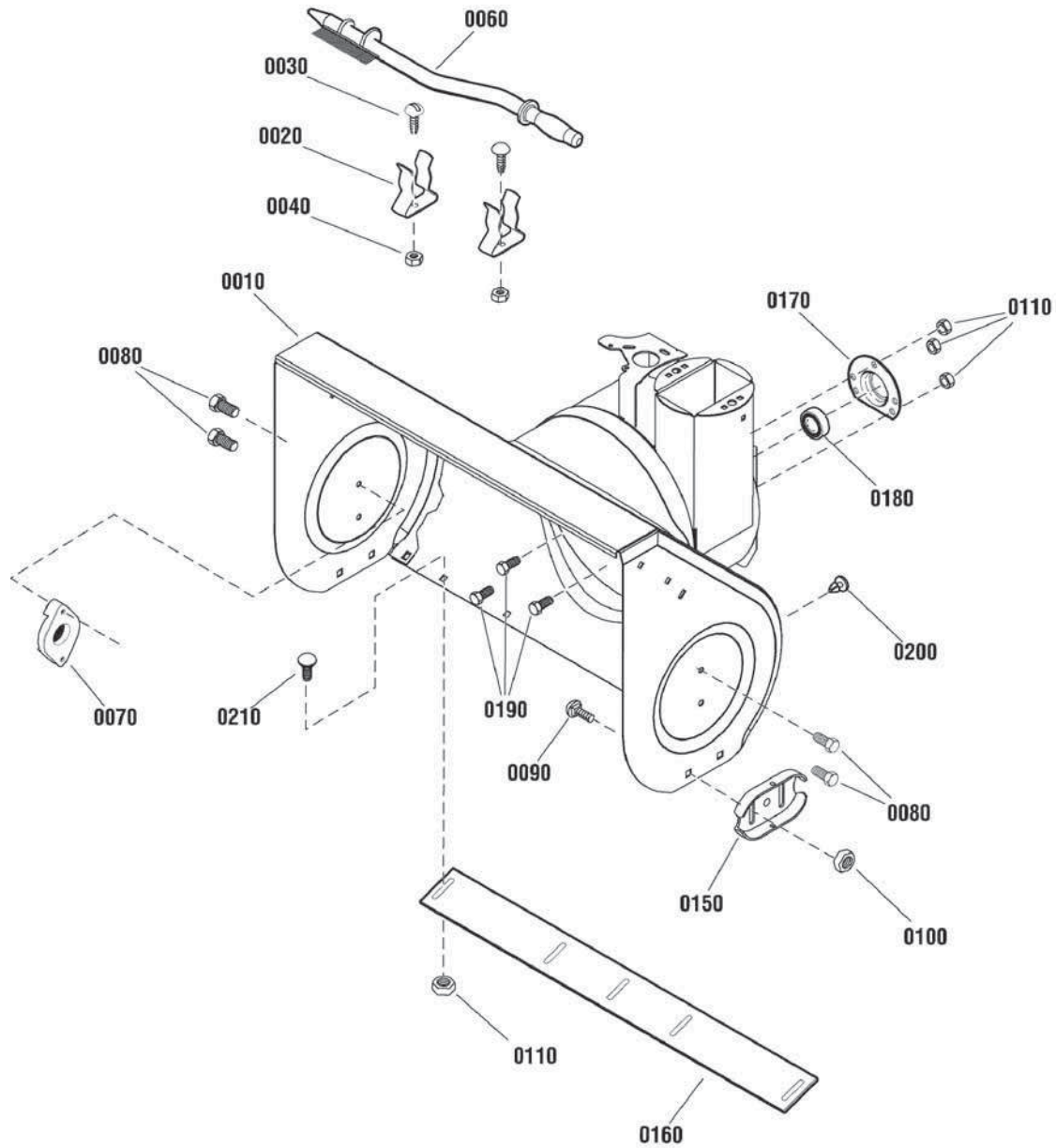
#### The above parts group applies to the following Mfg. Nos.:

1696155-00 - 924MD  
1696254-00 - MB924E

## Auger Housing Group

2990622

NOTE: Unless noted otherwise,  
use the standard hardware torque  
specification chart.



The above parts group applies to the following Mfg. Nos.:

1696155-00 - 924MD

1696254-00 - MB924E

## Auger Housing Group

REF NO	PART NO.	QTY.	DESCRIPTION
0010	1687694YP	1	AUGER HOUSING
0020	1736620YP	2	CLAMP, Spring
0030	1960569SM	2	SCREW, Truss Head, Torx #10-24 x 3/8
0040	15X146MA	2	NUT, Hex Lock, Nylon, #10C
0060	1736094YP	1	BRUSH, Cleanout
0070	9517MA	2	BEARING, Auger
0080	9357MA	6	CAPSCREW, 5/16-18 x 3/4
0090	7091547YP	4	BOLT, Carriage, 3/8-16 x 3/4, G5
0100	7091619SM	4	NUT, Hex Flange, 3/8-16
0110	710026MA	7	NUT, Hex Flange, Serrated Lock, 5/16-18
0150	1727854BMYP	2	SKID, Height Adjust
0160	1738301AYP	1	BLADE, Scraper
0170	582957YZMA	1	RETAINER, Ball Bearing
0180	1705897SM	1	BEARING, Ball
0190	001X45MA	3	CAPSCREW, Hex Head, 5/16-18 x 5/8
0200	760040MA	2	PLUG
0210	7090799SM	4	BOLT, Carriage, 5/16-18 x 5/8, G5

Not for  
Reproduction

### Footnotes

---

The above parts group applies to the following Mfg. Nos.:

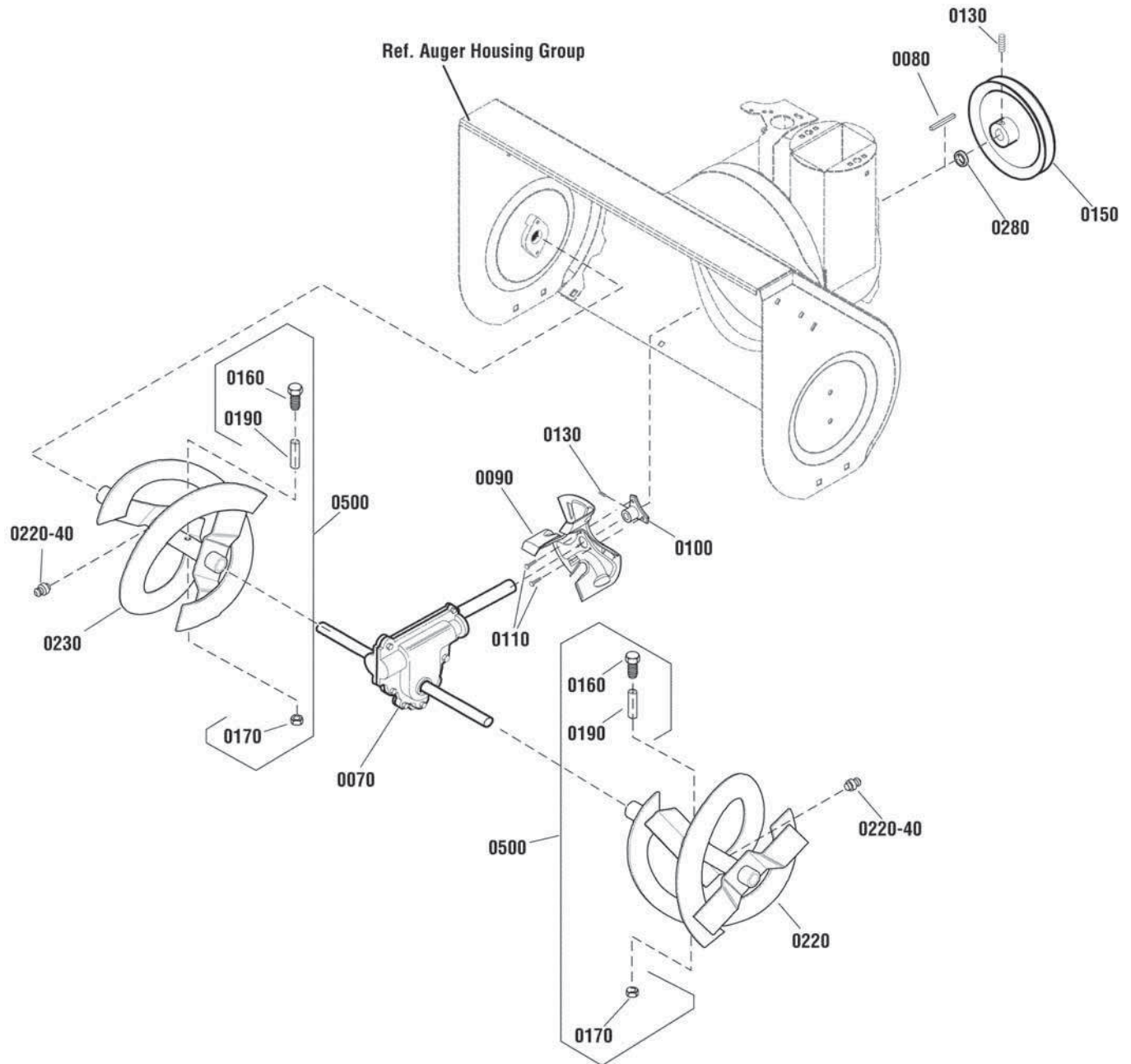
1696155-00 - 924MD

1696254-00 - MB924E

## Auger Drive Group

NOTE: Unless noted otherwise,  
use the standard hardware torque  
specification chart.

2990623



The above parts group applies to the following Mfg. Nos.:

1696155-00 - 924MD

1696254-00 - MB924E

## Auger Drive Group

REF NO	PART NO.	QTY.	DESCRIPTION
0070	1753072YP	1	GEAR CASE ASSEMBLY
0080	2001022MA	1	KEY, Square, 3/16 x 3/4
0090	1739094BJYP	1	IMPELLER
0100	1739073YP	1	HUB, Impeller
0110	1930601SM	3	SCREW, Hex Washer Head, Taptite, 5/16-18 x 5/8
0130	7090848SM	3	SET SCREW, Socket Head, 5/16-18 x 1/2
0150	1501211MA	1	PULLEY
0160	9524MA	2	CAPSCREW, Hex Head, 1/4-20 x 3/4
0170	73826MA	2	NUT, Hex Centerlock, 1/4-20
0190	3943MA	2	SPACER, Sleeve
0220	1738299BJYP	1	AUGER, 24", LH
0230	1738300BJYP	1	AUGER, 24", RH
0220-40	10104MA	1	FITTING, Grease
0280	1501158MA	1	SPACER, Pulley
0500	1501216MA	1	KIT, Shear Bolt (Includes Ref. Nos. 0160, 0170 & 0190)

Not for  
Reproduction

### Footnotes

---

The above parts group applies to the following Mfg. Nos.:

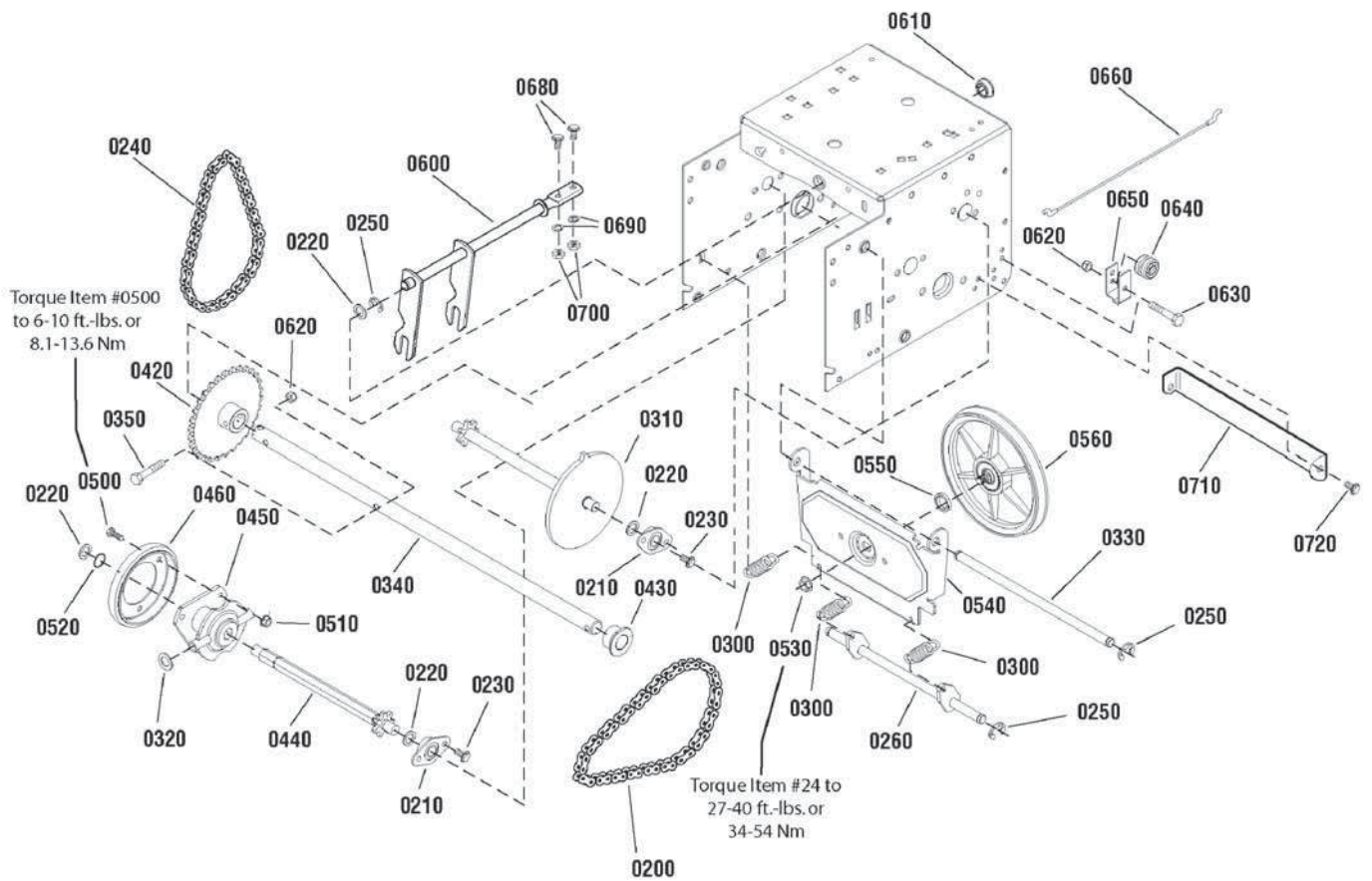
1696155-00 - 924MD

1696254-00 - MB924E

## Traction Drive Group - Standard

NOTE: Unless noted otherwise,  
use the standard hardware torque  
specification chart.

2989173



The above parts group applies to the following Mfg. Nos.:

1696155-00 - 924MD  
1696254-00 - MB924E



## Traction Drive Group - Standard

REF NO	PART NO.	QTY.	DESCRIPTION
0200	579851MA	1	CHAIN, Roller, #420 x 19.00
0210	334163MA	4	BEARING AND RETAINER ASSEMBLY
0220	579858MA	5	WASHER, Flat, 1/2
0230	1924856SM	8	SCREW, Hex Washer Head Taptite, 5/16-18 x 1/2
0240	579868MA	1	CHAIN, Roller, #420 x 18.00
0250	11X30MA	5	RETAINER, Ring, 7/16
0260	1502105YZMA	1	SPRING LINK ASSEMBLY
0300	1736469YP	3	SPRING, Extension
0310	1501090MA	1	SPROCKET, Set
0320	1960027SM	2	WASHER, 1/2
0330	1501092YZMA	1	AXLE, Swing Plate
0340	1501563YZMA	1	AXLE, 16"
0350	01X193MA	1	SCREW, 1/4 - 20 x 1-3/4
0420	1501089MA	1	SPROCKET, Axle
0430	1501114MA	2	BEARING, Axle
0440	1501100MA	1	HEX SHAFT & SPROCKET ASSEMBLY
0450	1739282YP	1	HUB, Friction Wheel & Bearing
0460	1501435MA	1	WHEEL, Friction Disc
0500	1921959SM	3	CAPSCREW, Hex Head 1/4-20 x 5/8 G5
0510	1928372SM	3	NUT, Hex KEPS 1/4-20
0520	1733326SM	1	RING, Retaining Extension
0530	15X114MA	1	NUT, Flange Lock, 3/8-24
0540	1501057YZMA	1	PLATE, Swinging
0550	1501158MA	1	SPACER, Friction Pulley
0560	1501115MA	1	FRICTION PULLEY ASSEMBLY
0600	1501110YZMA	1	ASSEMBLY, Speed Selector
0610	579944MA	1	BEARING, Flange
0620	1920397SM	2	NUT, Hex Lock ESNA Light 1/4-20
0630	1922837SM	1	CAPSCREW, Hex Head, 1/4-20 x 1-1/2 G5
0640	579860MA	1	SPOOL CABLE, Auger Control
0650	1750398YP	1	BRACKET, Cable Spool
0660	1750403YP	1	CABLE, Front Drive
0680	001X38MA	2	BOLT, Hex, 1/4-20 x 5/8
0690	1916964SM	2	LOCKWASHER, Spring, 1/4-20
0700	7091576SM	2	NUT, Hex, 1/4-20, G5
0710	1502030YZMA	1	BRACKET, Support
0720	1927429SM	2	CAPSCREW, Hex Washer Head, Taptite, 1/4-20 x 5/8

### Footnotes

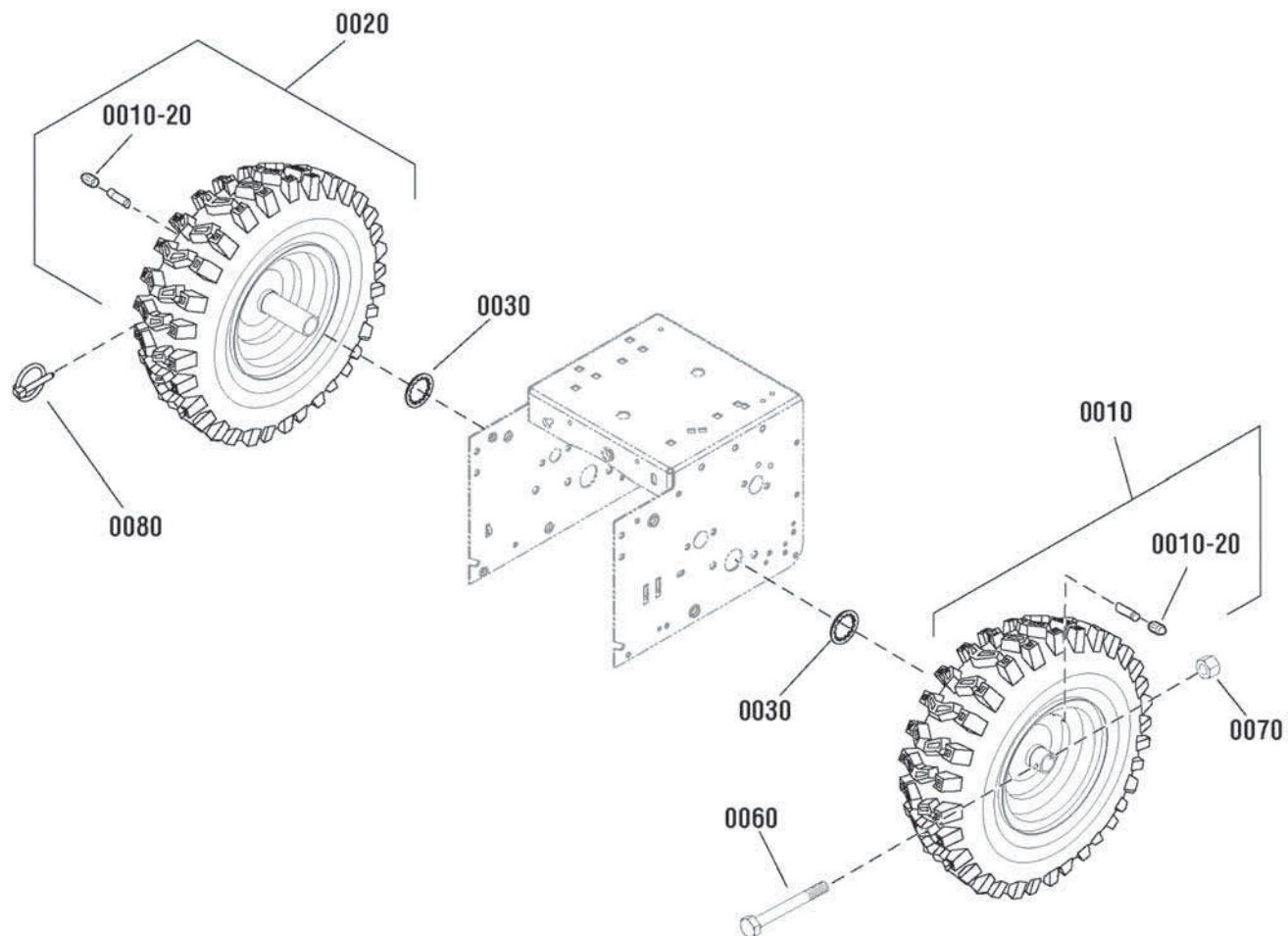
The above parts group applies to the following Mfg. Nos.:

1696155-00 - 924MD  
1696254-00 - MB924E

## Wheels & Tires Group

NOTE: Unless noted otherwise,  
use the standard hardware torque  
specification chart.

2989661



The above parts group applies to the following Mfg. Nos.:

1696155-00 - 924MD

1696254-00 - MB924E

## ***Wheels & Tires Group***

---

<b>REF NO</b>	<b>PART NO.</b>	<b>QTY.</b>	<b>DESCRIPTION</b>
0010	1754486YP	1	WHEEL & TIRE ASSEMBLY, 15 x 5, P2-407, LH
0020	1754487YP	1	WHEEL & TIRE ASSEMBLY, 15 x 5, P2-407, RH
0010-20	2172353SM	1	VALVE STEM & CAP
0030	1657528SM	2	RING, Retaining, Self Lock, 3/4
0060	577015MA	1	BOLT, Hex, 1/4-20 x 1-3/4, G5
0070	15X145MA	1	NUT, Hex, Nylock, 1/4-20
0080	73842MA	1	PIN, Klik, 1/4 x 1-3/8

Not for  
Reproduction

### **Footnotes**

---

**The above parts group applies to the following Mfg. Nos.:**

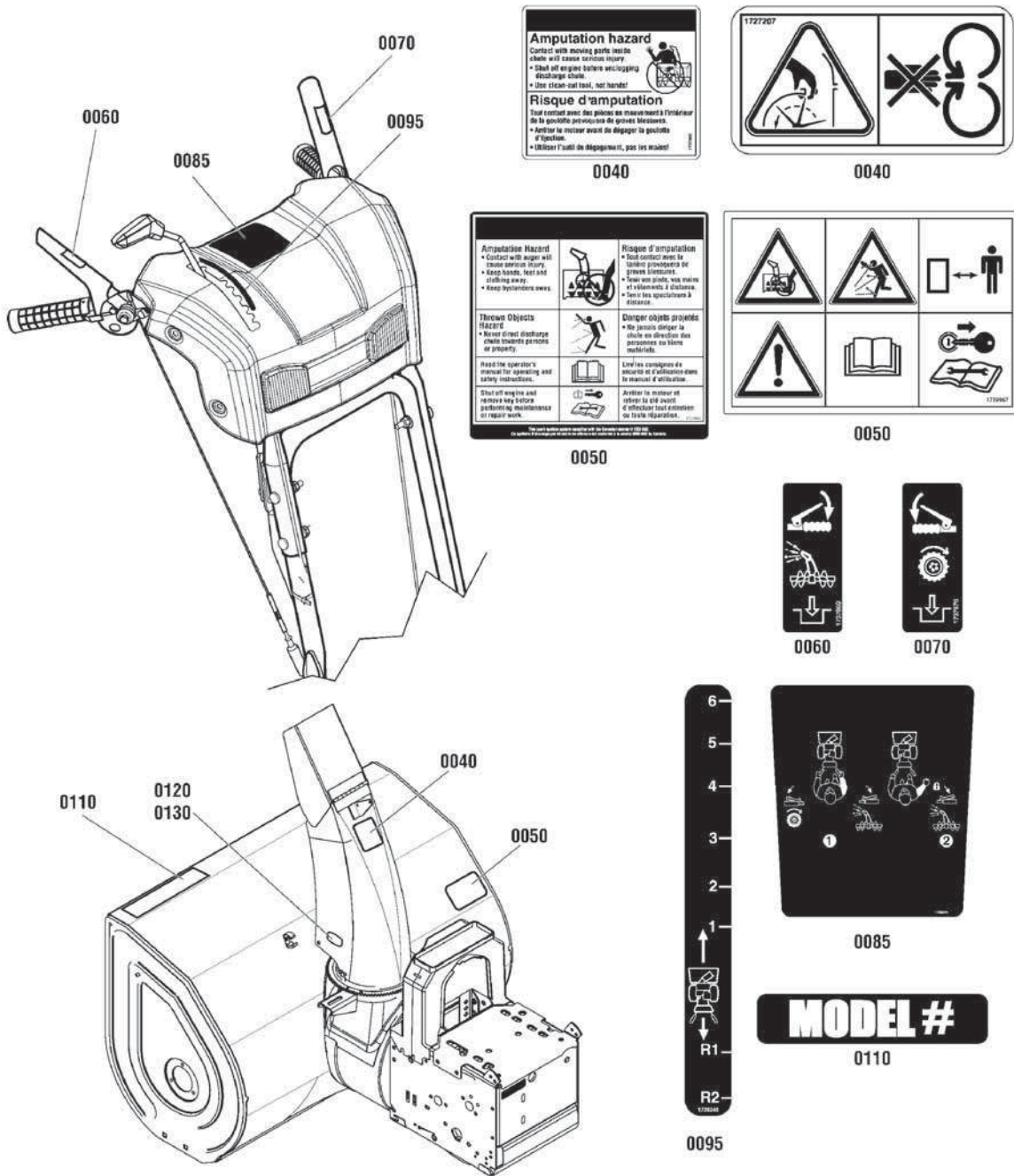
1696155-00 - 924MD

1696254-00 - MB924E

# Decals Group

NOTE: Unless noted otherwise, use the standard hardware torque specification chart.

2990626



The above parts group applies to the following Mfg. Nos.:

- 1696155-00 - 924MD
- 1696254-00 - MB924E

## Decals Group

REF NO	PART NO.	QTY.	DESCRIPTION
0040	1727207SM	1	DECAL, Chute Warning, Export, No Text (Export Models)
0040	1737865YP	1	DECAL, Chute Warning, FR/ENG (Domestic Models)
0050	1737867YP	1	DECAL, Danger Auger Icons (Export Models)
0050	1737866YP	1	DECAL, Danger Auger, FR/ENG (Domestic Models)
0060	1753133YP	1	DECAL, Auger Control Symbols
0070	1753134YP	1	DECAL, Traction Control Symbols
0085	1738344YP	1	DECAL, Free Hand Operation
0095	1738349YP	1	DECAL, Speed Control
0110	1755022YP	1	DECAL, Auger Housing, BM924E (Export Models)
0110	1754823YP	1	DECAL, Auger Housing, 924MD (Domestic Models)
0120	1754821YP	1	DECAL, Logo, Chute, LH
0130	1754718YP	1	DECAL, Logo, Chute, RH

Not for  
Reproduction

## Footnotes

---

**The above parts group applies to the following Mfg. Nos.:**

1696155-00 - 924MD

1696254-00 - MB924E



## Gear Case Assembly

REF NO	PART NO.	QTY.	DESCRIPTION
0300	896MA	1	CASE, Gear, RH
0301	895MA	1	CASE, Gear, LH
0303	910828MA	7	BOLT, Hex, 5/16-24 x 1
0304	71100MA	8	NUT, Hex Flange, Serrated Lock, 5/16-24
0305	330434MA	1	CAPSCREW, Hex Head, 5/16-24
0306	53749MA	1	PLUG, Pipe
0310	780151MA	2	SEAL, Oil
0311	53743MA	2	BEARING, Sleeve, 1 x 1-1/4 x 1
0312	53748MA	2	WASHER, Flat, 1-1-1/2
0313	1739058YP	1	SHAFT, Auger Out, 24"
0314	897MA	1	GASKET
0315	1752500YP	1	GEAR, Worm, 22T
0316	73905MA	1	KEY, Woodruff
0320	53737MA	1	RING, Quad
0321	583126MA	1	BEARING, Flange, 3/4 ID x 1-1/8 OD
0322	48275MA	1	WASHER, Thrust
0323	50684MA	1	BEARING, Roll Thrust, 3/4 ID x 1-1/4 OD
0324	48275MA	1	WASHER, Thrust
0326	50795MA	1	KEY, HI-PRO
0327	53732MA	1	WORMGEAR, 1-3/4 OD x 1-1/2"
0330	53731MA	1	BEARING, Sleeve, 3/4 ID x 7/8 OD
0340	1751535YP	1	SHAFT, Impeller
0380	1752515YP	1	RING, Retaining, 3/4

Not for  
Reproduction

### Footnotes

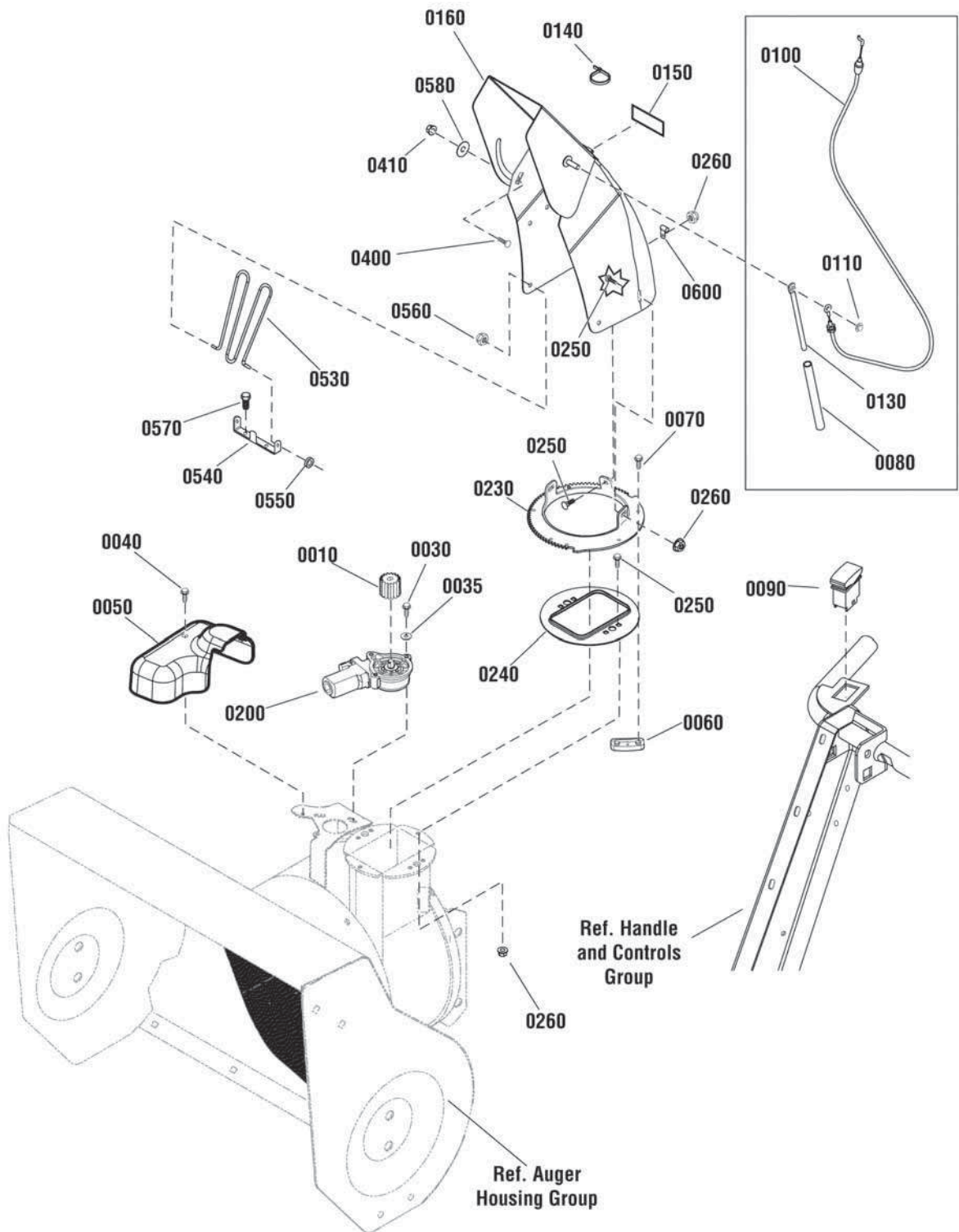
The above parts group applies to the following Mfg. Nos.:

1696155-00 - 924MD  
1696254-00 - MB924E

## Discharge Chute Group

NOTE: Unless noted otherwise,  
use the standard hardware torque  
specification chart.

2990796



The above parts group applies to the following Mfg. Nos.:

1696155-00 - 924MD

1696254-00 - MB924E



## Discharge Chute Group

REF NO	PART NO.	QTY.	DESCRIPTION
0010	1728967SM	1	PINION
0030	1739621YP	3	SCREW, Button Head, Torx, M5 x .8 x 14
0035	7091552SM	3	WASHER, Flat, 1/4
0040	1925592SM	1	SCREW, Hex Washer Head, Taptite, 1/4-20 x 3/4
0050	1752877YP	1	COVER, Electric Chute Rotation
0060	7011938SM	3	RETAINER, Spout
0070	1960001SM	6	SCREW, Hex Washer Head, Plastite, 10-14 x 5/8
0080	1734647SM	1	SPRING, Compression, 6"
0090	1737378YP	1	SWITCH, Chute Rotation
0100	1750623YP	1	CABLE ASSEMBLY, Chute Deflector
0110	1932718SM	1	NUT, Push, 5/16
0130	1734708ASM	1	ROD, Spring Guide
0140	7012080SM	4	CABLE TIE
0150	1733601SM	2	DECAL, Hinge
0160	1737443AYP	1	CHUTE
0200	1739309YP	1	MOTOR, Chute Rotation
0230	1737465AYP	1	GEAR, Chute
0240	1737411YP	1	ADAPTER, Chute Ring
0250	02X101MA	4	BOLT, Carriage, 1/4-20 x 3/4
0260	1960685SM	4	NUT, Hex KEPS, 1/4-20
0400	1931333SM	1	BOLT, Carriage, Short Neck, 5/16-18 x 3/4, G5
0410	1739305YP	1	NUT, Hex Flange, ESNA, 5/16-18
0530	1733475SM	1	GUARD, Chute (Used on export models only)
0540	1752883YP	1	BRACKET, Chute Guard (Used on export models only)
0550	1738174YP	2	GROMMET (Used on export models only)
0560	1960140SM	2	NUT, Push, 3/16 (Used on export models only)
0570	1925003SM	2	SCREW, Hex Head, Taptite, 1/4-20 x 1/2 (Used on export models only)
0580	2860210SM	1	WASHER, Nylon
0600	1739331YP	1	CLIP, Cable

## Footnotes

The above parts group applies to the following Mfg. Nos.:

1696155-00 - 924MD  
1696254-00 - MB924E

Not for  
Reproduction

# Hardware Identification & Torque Specifications

Torque Specification Chart								
FOR STANDARD METRIC MACHINE HARDWARE (Tolerance ± 20%)								
Property Class	5.6		8.8		10.9		12.9	
	Class 5.6		Class 8.8		Class 10.9		Class 12.9	
Size Of Hardware	in/lbs		in/lbs		in/lbs		in/lbs	
	ft/lbs	Nm.	ft/lbs	Nm.	ft/lbs	Nm.	ft/lbs	Nm.
M3	5.88	.56	13.44	1.28	19.2	1.80	22.92	2.15
M4	13.44	1.28	30.72	2.90	43.44	4.10	52.56	4.95
M5	26.4	2.50	60.96	5.75	5.97	8.10	7.15	9.7
M6	44.64	4.3	7.3	9.9	10.3	14	12.1	16.5
M7	5.2	7.1	12.1	16.5	16.9	23	19.9	27
M8	7.7	10.5	17.7	24	25	34	29	40
M10	15	21	35	48	50	67	59	81
M12	26	36	61	83	86.2	117	103	140
M14	42	58	101	132	136	185	162	220
M16	64	88	147	200	210	285	250	340
M18	89	121	202	275	287	390	346	470
M20	126	171	290	390	405	550	486	660
M22	169	230	390	530	559	745	656	890
M24	217	295	497	375	708	960	840	1140
M27	320	435	733	995	1032	1400	1239	1680
M30	435	590	995	1350	1401	1900	1681	2280
M33	590	800	1349	1830	1902	2580	2278	3090
M36	759	1030	1740	2360	2441	3310	2935	3980
M39	988	1340	2249	3050	3163	4290	3798	5150

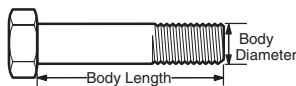
The guides and ruler furnished below are designed to help you select the appropriate hardware.



Nut, M8

Thread Diameter (mm)  
Inside Diameter (in)  
Threads per inch

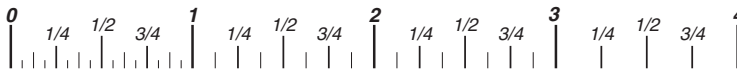
Nut, 1/2-16



Screw, M8- 1.25 x 25

Thread Diameter (mm)  
Body Diameter  
Distance between threads (mm)  
Threads per inch  
Body Length (mm)  
Body Length (in)

Screw, 1/2- 16 x 2



## Standard Hardware Sizing

When a washer or nut is identified as 1/2" (M8), this is the *Nominal size*, meaning the *inside diameter* is 1/2 inch (8mm metric thread diameter); if a second number is present it represents the *threads per inch* (distance between threads).

When bolt or capscrew is identified as 1/2 - 16 x 2" (M8 - 1.25 x 50 ), this means the *Nominal size*, or body diameter is 1/2 inch (8mm metric thread diameter), the second number, 16, represents the *threads per inch*, (1.25 thread diameter). The final number is the body length of the bolt or screw, 2 inches (50mm).

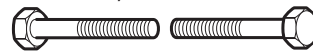
Torque Specification Chart						
FOR STANDARD MACHINE HARDWARE (Tolerance ± 20%)						
Hardware Grade	No Marks		SAE Grade 5		SAE Grade 8	
	SAE Grade 2		SAE Grade 5		SAE Grade 8	
Size Of Hardware	in/lbs		in/lbs		in/lbs	
	ft/lbs	Nm.	ft/lbs	Nm.	ft/lbs	Nm.
8-32	19	2.1	30	3.4	41	4.6
8-36	20	2.3	31	3.5	43	4.9
10-24	27	3.1	43	4.9	60	6.8
10-32	31	3.5	49	5.5	68	7.7
1/4-20	66	7.6	8	10.9	12	16.3
1/4-28	76	8.6	10	13.6	14	19.0
5/16-18	11	15.0	17	23.1	25	34.0
5/16-24	12	16.3	19	25.8	29	34.0
3/8-16	20	27.2	30	40.8	45	61.2
3/8-24	23	31.3	35	47.6	50	68.0
7/16-14	30	40.8	50	68.0	70	95.2
7/16-20	35	47.6	55	74.8	80	108.8
1/2-13	50	68.0	75	102.0	110	149.6
1/2-20	55	74.8	90	122.4	120	163.2
9/16-12	65	88.4	110	149.6	150	204.0
9/16-18	75	102.0	120	163.2	170	231.2
5/8-11	90	122.4	150	204.0	220	299.2
5/8-18	100	136	180	244.8	240	326.4
3/4-10	160	217.6	260	353.6	386	525.0
3/4-16	180	244.8	300	408.0	420	571.2
7/8-9	140	190.4	400	544.0	600	816.0
7/8-14	155	210.8	440	598.4	660	897.6
1-8	220	299.2	580	788.8	900	1,244.0
1-12	240	326.4	640	870.4	1,000	1,360.0

## NOTES

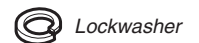
- These torque values are to be used for all hardware excluding: locknuts, self-tapping screws, thread forming screws, sheet metal screws and socket head setscrews.
- Recommended seating torque values for locknuts:
  - for prevailing torque locknuts - use 65% of grade 5 torques.
  - for flange whizlock nuts and screws - use 135% of grade 5 torques.
- Unless otherwise noted on assembly drawings, all torque values must meet this specification.

## Common Hardware Types

Hex Head Capscrew



Washer



Lockwasher

Carriage Bolt



Hex Nut

## Wrench & Fastener Size Guide

1/4" Bolt or Nut Wrench—7/16"	5/16" Bolt or Nut Wrench—1/2"	3/8" Bolt or Nut Wrench—9/16"	7/16" Bolt or Nut Wrench (Bolt)—5/8" Wrench (Nut)—11/16"	1/2" Bolt or Nut Wrench—3/4"
M6 Bolt or Nut Wrench—10mm	M8 Bolt or Nut Wrench—13mm	M10 Bolt or Nut Wrench—17mm	M12 Bolt or Nut Wrench—19mm	M14 Bolt or Nut Wrench—22mm



Not for  
Reproduction

**IT IS THE POLICY OF BRIGGS & STRATTON CORP. TO IMPROVE ITS PRODUCTS  
WHENEVER IT IS POSSIBLE AND PRACTICAL TO DO SO. WE RESERVE THE RIGHT TO  
MAKE CHANGES OR ADD IMPROVEMENTS AT ANY TIME WITHOUT INCURRING ANY  
OBLIGATION TO MAKE SUCH CHANGES ON PRODUCTS.**

**Briggs & Stratton Power Products Group**

---

12301 W. Wirth Street  
Wauwatosa, WI, 53222 USA

[www.BRIGGSandSTRATTON.com](http://www.BRIGGSandSTRATTON.com)

© Copyright 2012 by Briggs & Stratton Corporation  
Milwaukee, WI, USA. All rights reserved