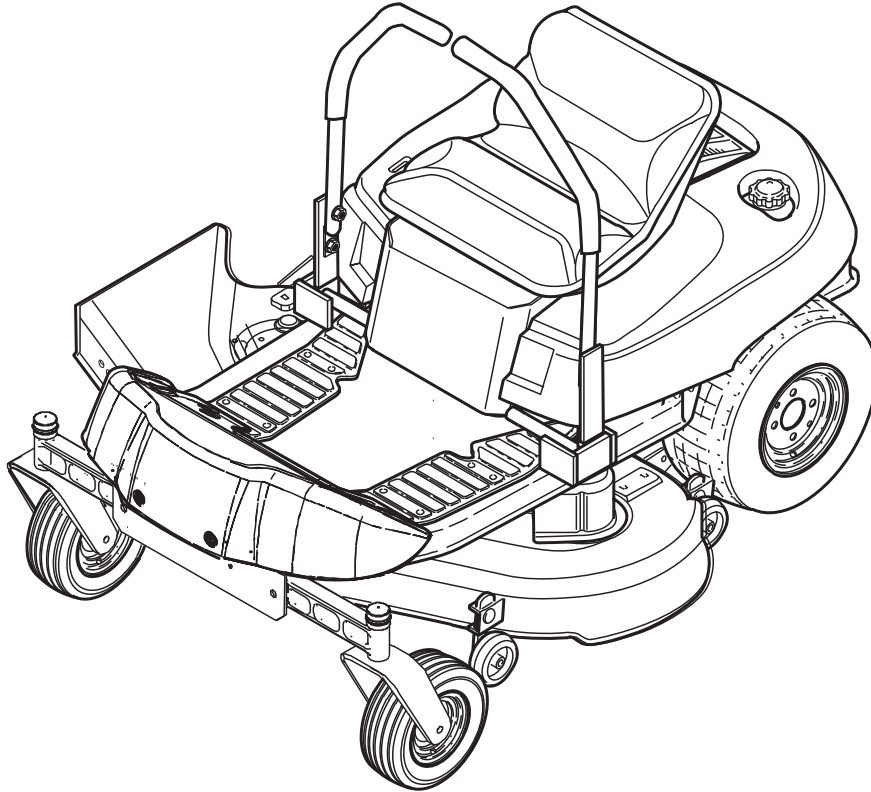




PARTS LIST



Mower Decks

Mfg. No.	Description
7800629	E20M42, 20HP B&S w/42" Mower Deck (2010)

Manual Part No. 1751601
Revision A
Rev. Date: 3/24/2011

Not for
Reproduction

PRODUCT COMPONENTS	PAGES
Frame, Body & Seat Group	4
Engine Group - 20HP	8
Transmission Group	12
Controls Group	16
Electrical Group	18
Lift Group	20
Wheel & Tire Group	22
Decals Group	24
42" Mower Deck - Clutch & Support	26
42" Mower Deck - Housing & Arbor Group, Export	28
Torque Specification Chart	Inside Back Cover

Not for
Reproduction

Frame, Body & Seat Group

REF NO	PART NO.	QTY.	DESCRIPTION
1	1733448ASM	2	CASTER ASSEMBLY
2	1960160SM	4	WASHER, 3/4 ID x 1.6 OD x .05 THK
3	1611710SM	2	RING, Klipring, 3/4
4	1734135SM	2	CAP, Hub
5	1730186SM	2	BUSHING, Axle Pivot
6	1733426ASM	1	AXLE, Casting
7	1733571SM	2	BOLT, Shoulder, G5
8	1960687SM	3	NUT, Hex Flange, 3/8-16 ESNA
9	2860744SM	1	CAPSCREW, Hex Head, 5/8-11 x 3-1/4, G5
10	1960035SM	1	WASHER, 5/8, .64 ID x 1-3/4 OD x .11 THK
11	2860646SM	1	NUT, Hex Flange Two-Way Lock, 5/8-11
12	1733304ASM	1	BRACKET, Front Footrest Support
13	1930601SM	2	SCREW, Hex Head Taptite, 5/16-18 x 5/8
14	1960368SM	2	NUT, Speed Lug Type, 1/4-20
15	1960715SM	8	SCREW, Truss Head Torx, 1/4-20 x 3/4
16	1726025ZSM	1	FRONT FOOTREST
17	1960694SM	14	NUT, Hex Flange, 1/4-20 ESNA
18	1931317SM	2	CARRIAGE BOLT, 1/4-20 x 3/4, G5
19	1726306SM	1	PAD, Footrest Panel
20	1726018SM	1	SEAT ASSEMBLY, with Armrests
21	7300752AYP	1	PANEL, Front with Slot
22	1960518SM	2	NUT, Push, 1/4
23	1935255SM	4	NUT, Speed Lug Type, 5/16-18
24	009X67MA	2	BOLT, Shoulder
25	1960223SM	2	BOLT, Carriage, 5/16-18 x 1-1/4, G5
26	1728086SM	2	PIVOT, Hood, Powdered Metal
27	1931277SM	8	NUT, Hex Flange Whiz Lock, 5/16-18
28	1716654SM	2	BOLT, Shoulder, G5
29	1960295SM	6	SCREW, Hex Whiz Lock Flange, 1/4-20 x 5/8
30	1960738SM	2	SCREW, Hex Flange Whiz Lock, 5/16-18 x 3/4 Dog PT
31	7102141SM	1	SCREEN, Seat Deck
32	1673320SM	3	RIVET, Pop
33	7400299AYP	1	FRAME ASSEMBLY
34	1733965ASM	1	SUPPORT, Seat
35	1734143SM	1	SEAT DECK, Plastic
36	7301055BM	1	PLATE, Control
37	1960715SM	6	SCREW, Truss Head Torx, 1/4-20 x 3/4
38	1930591SM	5	SCREW, Hex Whiz Lock Flange, 5/16-18 x 3/4
39	1728986SM	1	PAD, Footrest, R.H.
40	1728987SM	1	PAD, Footrest L.H.
43	7102690YP	1	ELBOW, With Tube
44	1726400SM	1	BUSHING, Fuel
45	1921221SM	1	CAPSCREW, 5/16, 18 x 1-1/2

Footnotes

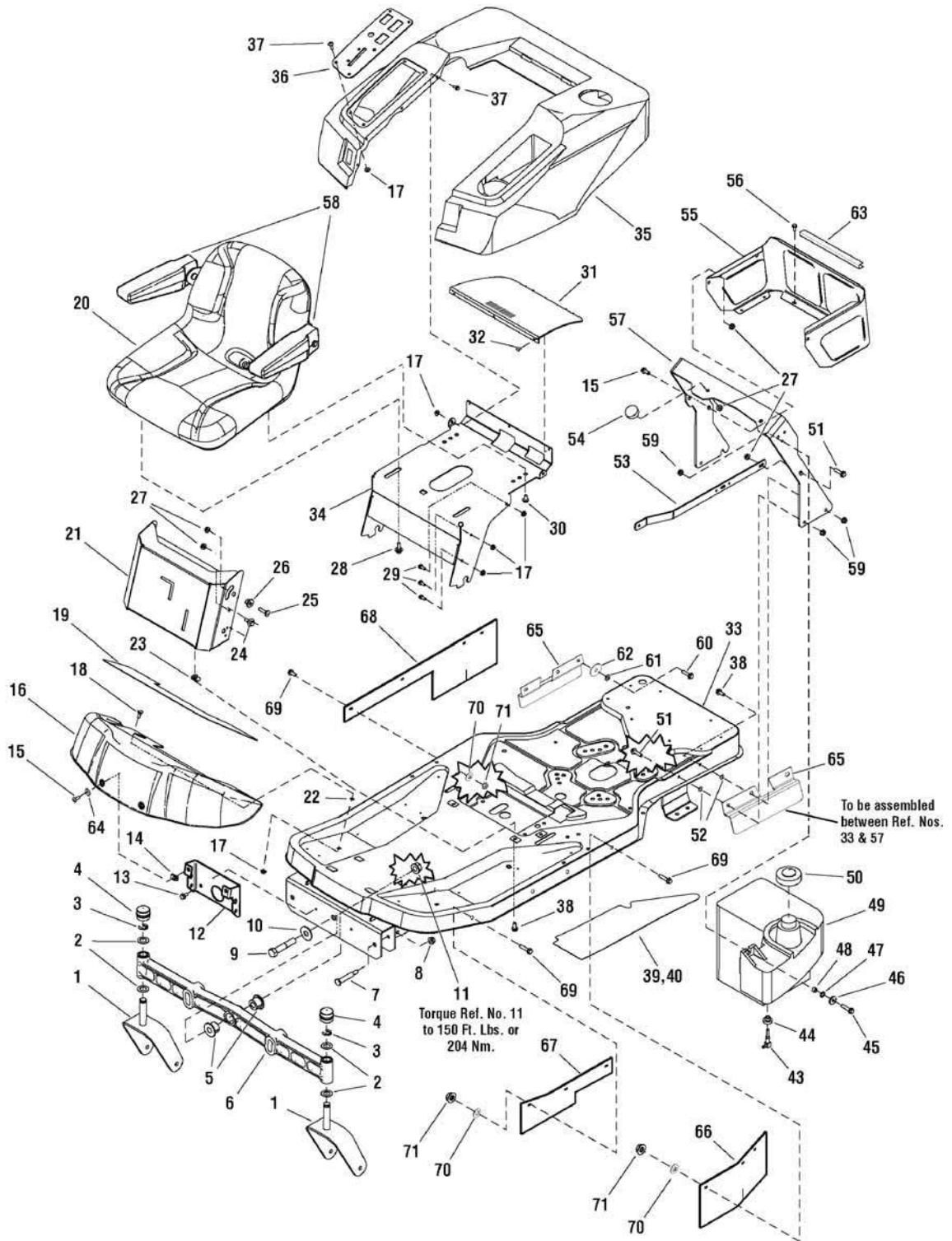
The above parts group applies to the following Mfg. Nos.:

7800629 - E20M42

Frame, Body & Seat Group

NOTE: Unless noted otherwise,
use the standard hardware torque
specification chart.

7501260



The above parts group applies to the following Mfg. Nos.:
7800629 - E20M42

Frame, Body & Seat Group

REF NO	PART NO.	QTY.	DESCRIPTION
46	1919381SM	1	WASHER, 5/16, .34 ID x 1 OD x .13 THK
47	2820427SM	1	LOCKWASHER, External Tooth, 3/8
48	1710437SM	1	SPACER, .33 ID x 1/2 OD x 5/16 LG
49	7102860YP	1	TANK, Fuel
50	1714020SM	1	CAP, Fuel Tank
51	1921977SM	5	CAPSCREW, Hex Head, 5/16-18 x 1-1/4, G5
52	1933988SM	4	NUT, Push Pal, 5/16 DIA Thread, 5/8 OD
53	1734323ASM	1	BRACE, Tank
54	1726390SM	2	BUMPER, Rubber
55	7301146AYP	1	SHROUD, Rear
56	1925003SM	6	SCREW, Hex Washer Head Taptite, 1/4-20 x 1/2
57	1733393ASM	1	SUPPORT, Seat Deck
58	1687021SM	1	ARM REST KIT, L.H & R.H.
59	1960686SM	5	NUT, Hex Flange Nylock, 5/16-18
61	1931942SM	1	NUT, Push Pal, 3/8
60	1920415SM	1	CAPSCREW, 3/8 - 16 x 1-1/4
62	1960534SM	1	WASHER, 3/8
63	7070814SM	1	TRIM, 8"
64	1921880SM	2	WASHER, External Tooth
65	1734392ASM	2	GUARD, Debris
66	7103040YP	1	GUARD, Rubber, Rear, Left
67	7103039YP	1	GUARD, Rubber, Front
68	7103041YP	1	GUARD, Rubber, Rear, Right
69	1960295SM	10	SCREW, Flange, 1/4-20 x 5/8
70	7014241YP	10	WASHER, Flat
71	7090372SM	10	NUT, 1/4-20

Footnotes

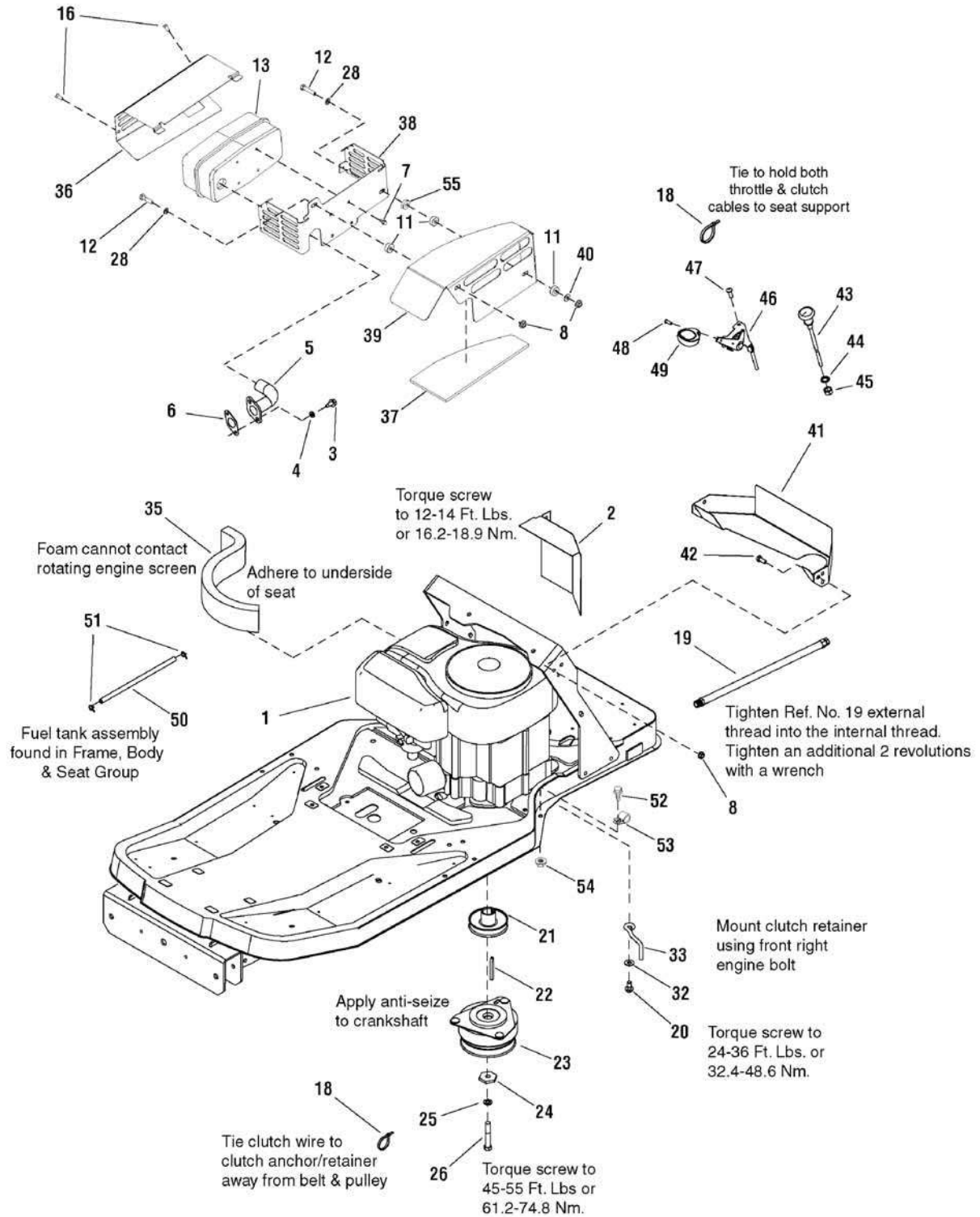
The above parts group applies to the following Mfg. Nos.:

7800629 - E20M42

Engine Group - 20HP

NOTE: Unless noted otherwise, use the standard hardware torque specification chart.

7501165



The above parts group applies to the following Mfg. Nos.:

7800629 - E20M42

Engine Group - 20HP

REF NO	PART NO.	QTY.	DESCRIPTION
1	33M777-0120-B1	1	* ENGINE, 20HP B&S (Engine Model: 33M777-0120-B1)
2	7300919ASM	1	HEAT SHIELD, Inner
3	1936228SM	2	CAPSCREW, Hex Head, 5/16-18 x 3/4, G8
4	1917356SM	2	LOCKWASHER, Spring, 5/16
5	1732259SM	1	PIPE ASSEMBLY, Exhaust
6	1731214SM	1	GASKET, Exhaust
7	1960295SM	4	SCREW, Hex Whiz Lock Flange, 1/4-20 x 5/8
8	1927557SM	4	NUT, Hex Whiz Lock Flange, 5/16-18
11	1667811SM	1	SPACER, .390 ID x .9 OD x .34 LG, Powdered Metal
12	7091908YP	2	CAPSCREW, Hex Head, 5/16-18 x 1-3/4, G5
13	1732273SM	1	MUFFLER ASSEMBLY, Single
16	1960720SM	4	CAPSCREW, Thread Cutting, # 10 x 1/2
18	2832747SM	2	TIE, Self Locking, 3-5/8 LG
19	1726498SM	1	HOSE, Oil Drain, 16-1/2 LG
20	2828635SM	3	SCREW, Taptite Washer Head, 3/8 - 16 x 1-1/4
21	7101716SM	1	PULLEY ASSEMBLY, Engine
22	2154096SM	1	KEY, Hi-Pro, 1/4 x 2-1/2
23	1686880SM	1	CLUTCH, Electric
24	1708264SM	1	WASHER, Hex, .453 ID x 1-1/2
25	1918199SM	1	LOCKWASHER, Spring, .438
26	7027266SM	1	CAPSCREW, Hex Head, 7/16-20 x 3, G5
28	1919326SM	2	WASHER, 5/16, .34 ID x 3/4 OD x .06 THK
32	1924940SM	1	WASHER, 3/8, .41 ID x .87 OD x .08 THK
33	7101717SM	1	RETAINER, Clutch
35	7102139SM	1	SEAL, Foam Air Duct, 1 x 2-1/2, 12" LG
36	1734032ASM	1	HEAT SHIELD, Single
37	1734062SM	2	INSULATION SHIELD, Top Muffler (Qty 2 used on models after Serial No. 2013365894)
38	1734017ASM	1	MUFFLER BRACKET/HEAT SHIELD
39	1734044ASM	1	GUARD, Muffler
40	1933988SM	1	NUT, Push Pal, 5/16
41	1734180BMYP	1	AIR DUCT, Inlet
42	1921332SM	2	CAPSCREW, Hex Head, 5/16-18 x 3/4, G5
46	7103123YP	1	CONTROL, Throttle
47	7090999SM	2	SCREW, Pan Head Taptite Torx, 1/4-20 x 5/8
48	7091195SM	1	SCREW, Pan Head Taptite Combo, 3/10-16 x 3/4
49	7100529SM	1	KNOB, Throttle
50	1734995SM	1	HOSE, Fuel, 19.5"
51	7029900SM	2	CLAMP, Hose
52	1930591SM	1	CAPSCREW, Hex Whiz Lock Flange, 5/16 - 18 x 3/4
53	7900020SM	1	CLIP, Harness

Footnotes

Note * See Briggs & Stratton Engine Repair Parts.

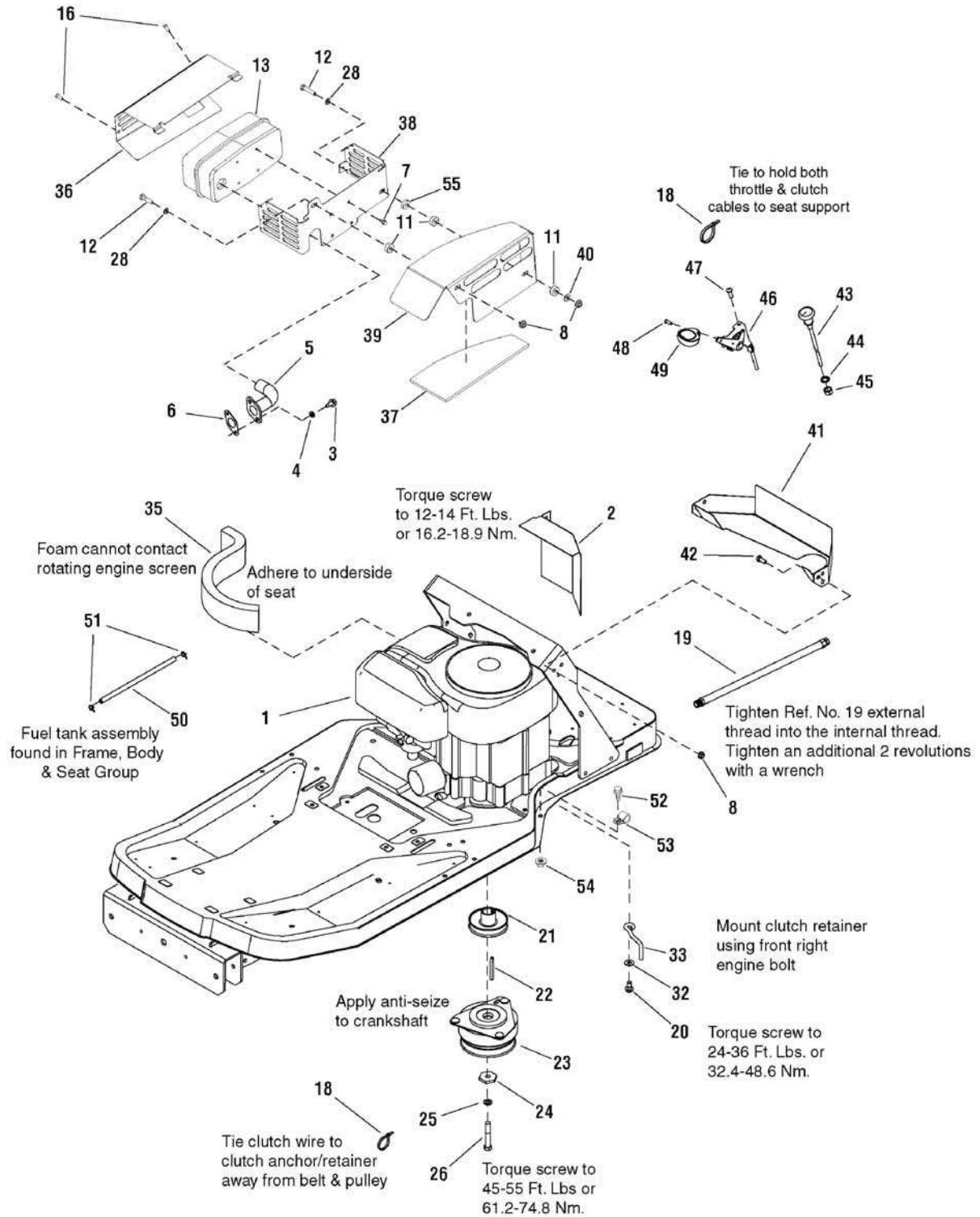
The above parts group applies to the following Mfg. Nos.:

7800629 - E20M42

Engine Group - 20HP

NOTE: Unless noted otherwise, use the standard hardware torque specification chart.

7501165



The above parts group applies to the following Mfg. Nos.:

7800629 - E20M42

Engine Group - 20HP

REF NO	PART NO.	QTY.	DESCRIPTION
54	1931277SM	1	NUT, Hex Whiz Lock Flange
55	1667812SM	1	SPACER, .390 ID x .9 OD x .70 LG

Not for
Reproduction

Footnotes

Note * See Briggs & Stratton Engine Repair Parts.

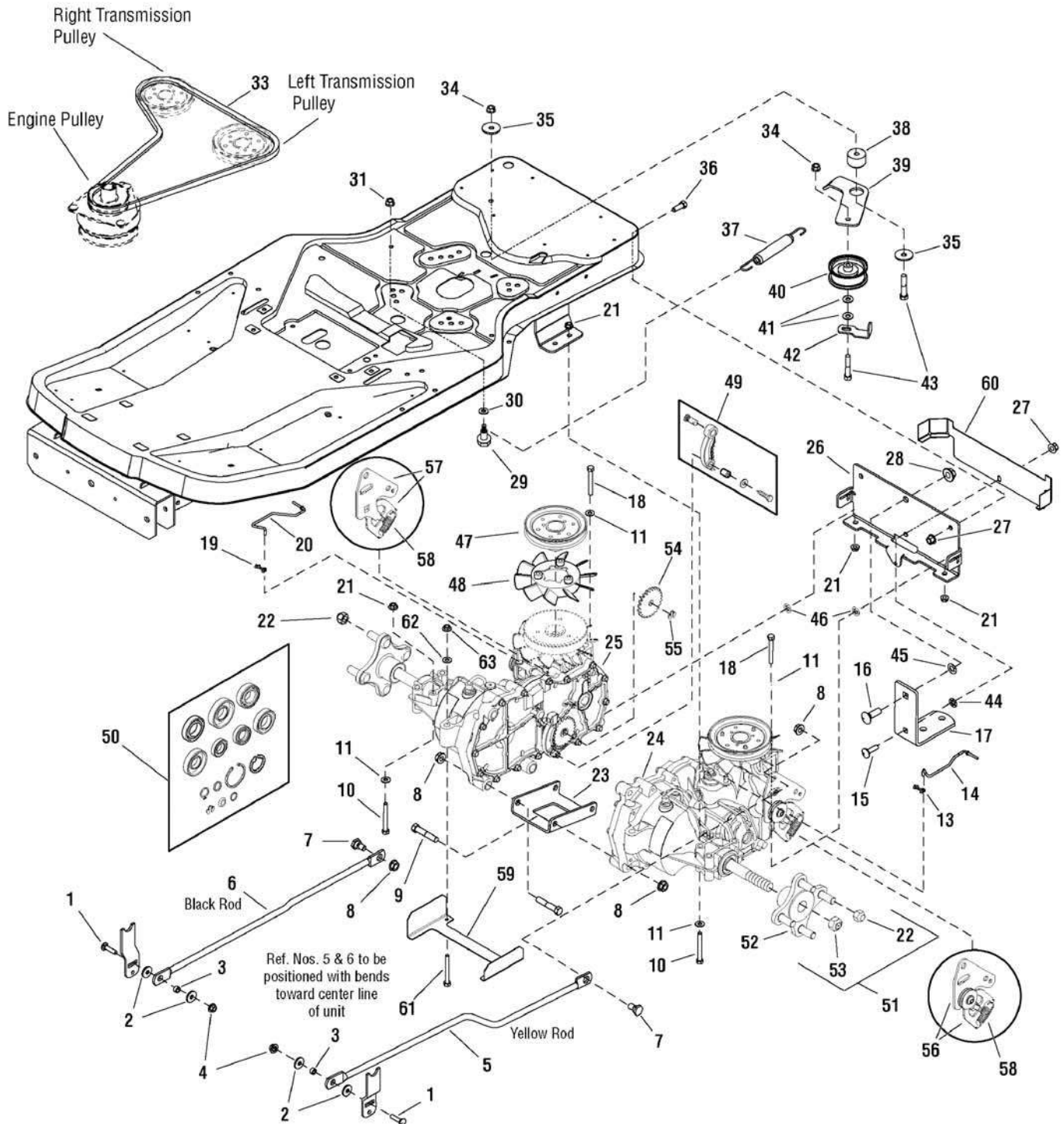
The above parts group applies to the following Mfg. Nos.:

7800629 - E20M42

Transmission Group

NOTE: Unless noted otherwise, use the standard hardware torque specification chart.

7501391



The above parts group applies to the following Mfg. Nos.:
7800629 - E20M42

Transmission Group

REF NO	PART NO.	QTY.	DESCRIPTION
1	1960223SM	2	BOLT, Carriage, 5/16-18 x 1-1/4, G5
2	1919381SM	4	WASHER, .34 ID x 1 OD x .13 THK
3	1703900SM	2	SPACER
4	1960684SM	2	NUT, Hex Keps, 5/16-18
5	1727555SM	1	ROD, Control L.H.
6	1727556SM	1	ROD, Control R.H.
7	1727831SM	2	BOLT, Shoulder
8	1930650SM	6	NUT, Hex Flange Two-Way Lock, 7/16-14
9	1927120SM	4	CAPSCREW, Hex Head, 7/16-14 x 2-1/4, G8
10	1923141SM	4	CAPSCREW, Hex Head, 5/16-18 x 2-3/4, G5
11	1919326SM	6	WASHER, .34 ID x 3/4 OD x .06 THK
13	1717024SM	1	CLIP, Rod End Linkage
14	1733913SM	1	ROD, Tow Valve L.H.
15	1960268SM	1	BOLT, Carriage, 3/8-16 x 1-1/4, G5
16	1960758SM	1	BOLT, Carriage, 1/2-13 x 1-1/2, G5
17	1733305ASM	1	DRAWBAR
18	1921719SM	2	CAPSCREW, Hex Head, 5/16-18 x 2-1/2, G5
19	1725550SM	1	CLIP, Rod End Linkage
20	1733914SM	1	ROD, Tow Valve R.H.
21	1931277SM	6	NUT, Hex Flange Whiz Lock, 5/16-18
22	5020601SM	8	NUT, Wheel Hex, 1/2-20
23	1733309ASM	1	SUPPORT, Transmission Center
24	1733351SM	1	TRANSMISSION, Hydro Gear EZT L.H.
25	1733352SM	1	TRANSMISSION, Hydro Gear EZT R.H.
26	1733302ASM	1	SUPPORT, Transmission Rear
27	1960687SM	3	NUT, Hex Flange, 3/8-16 ESNA
28	5025396SM	1	NUT, Hex Flange, 1/2-13
29	1728976SM	1	BOLT, Shoulder
30	1924874SM	1	WASHER, .34 ID x .87 OD x .06 THK
31	1927557SM	1	NUT, Hex Flange, 5/16-18
33	1732224SM	1	V-BELT, Transmission Drive, 54.4
34	1930645SM	3	NUT, Hex Flange Two-Way Lock, 3/8-16
35	1924356SM	3	WASHER, .41 ID x 1-1/2 OD x .12 THK
36	1921210SM	2	CAPSCREW, Hex Head, 3/8-16 x 1, G5
37	1734316SM	1	SPRING, Extension
38	1729007SM	1	SPACER, Powdered Metal
39	1733303ASM	1	ARM, Idler
40	1721133SM	1	PULLEY, Idler Flat
41	1924940SM	4	WASHER, .41 ID x .87 OD x .08 THK
42	1708352ASM	1	BELT GUIDE
43	1923701SM	2	CAPSCREW, Hex Head, 3/8-16 x 2, G5
44	1931942SM	1	NUT, Push Pal, 3/8
45	1960759SM	1	NUT, Push Pal, 1/2

Footnotes

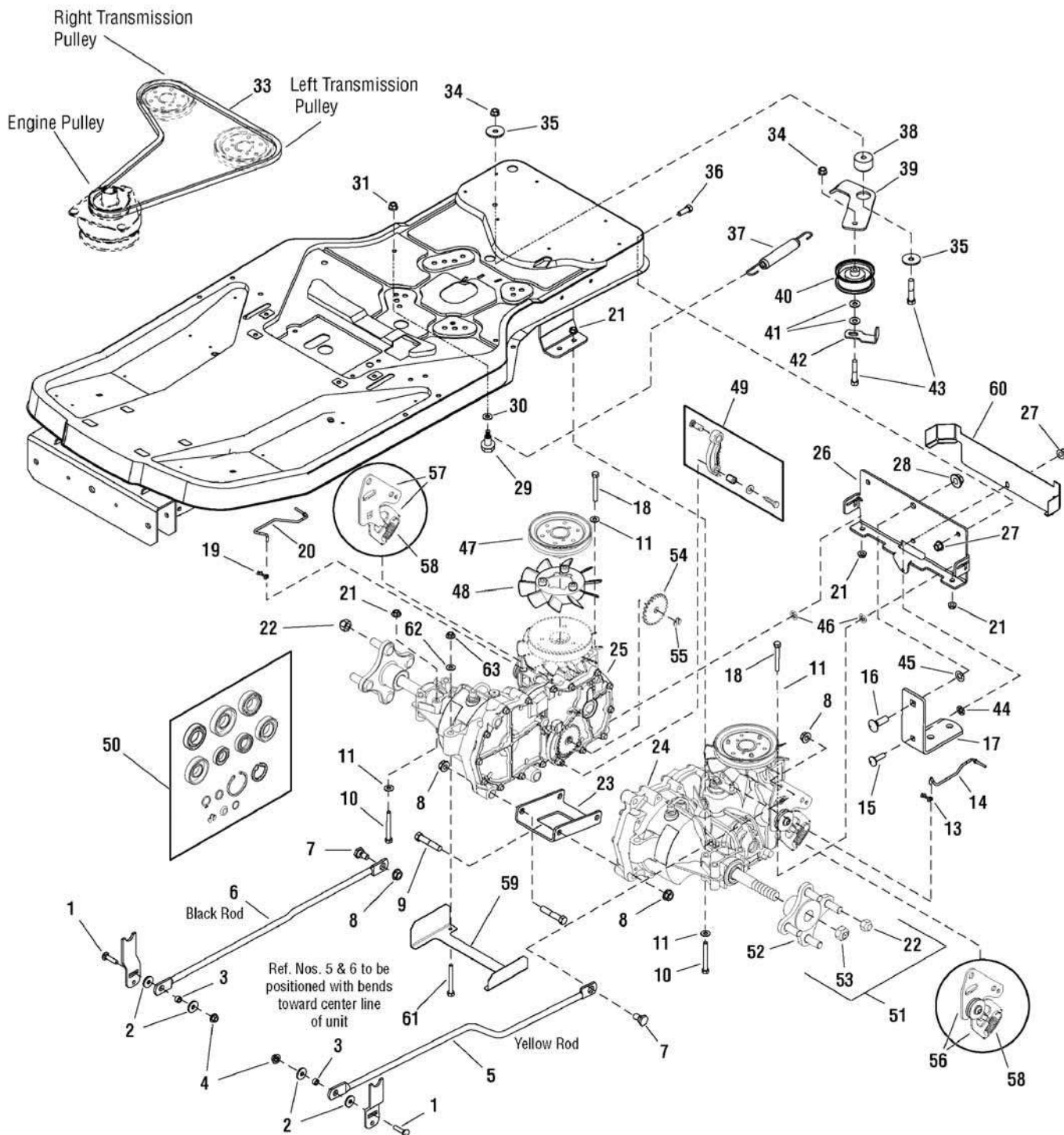
The above parts group applies to the following Mfg. Nos.:

7800629 - E20M42

Transmission Group

NOTE: Unless noted otherwise, use the standard hardware torque specification chart.

7501391



The above parts group applies to the following Mfg. Nos.:

7800629 - E20M42

Transmission Group

REF NO	PART NO.	QTY.	DESCRIPTION
46	1933988SM	2	NUT, Push Pal, 5/16
47	1728073SM	2	PULLEY, 4-1/2" Transmission
48	1728074SM	2	FAN, 6" Transmission
49	1728075SM	1	PARKING BRAKE ARM ASSEMBLY, Transmission
50	1728060SM	1	HYDRO SEAL KIT
51	1687329SM	2	HUB REPLACEMENT KIT
52	--	2	HUB, EZT Transmission
53	--	2	NUT, EZT Transmission
54	1728076SM	1	GEAR, Parking Brake, Transmission
55	1716622SM	1	CLIP, E Transmission Parking Brake
56	1735490SM	1	ARM, Control Kit L.H.
57	1735491SM	1	ARM, Control Kit R.H.
58	1735483SM	2	SPRING, Extension
58	1735482SM	2	SPRING, Extension
59	7301044BMYP	1	BRACKET, Clutch Guard
60	7301043BMYP	1	BRACKET, Rear Fan
61	7100671YP	2	CAPSCREW, Hex Head, 5/16-18 x 2-1/4
62	7090188SM	2	WASHER, Flat, 3/4
63	1935048SM	2	NUT, Hex Flange, 5/16/18

Not for
Reproduction

Footnotes

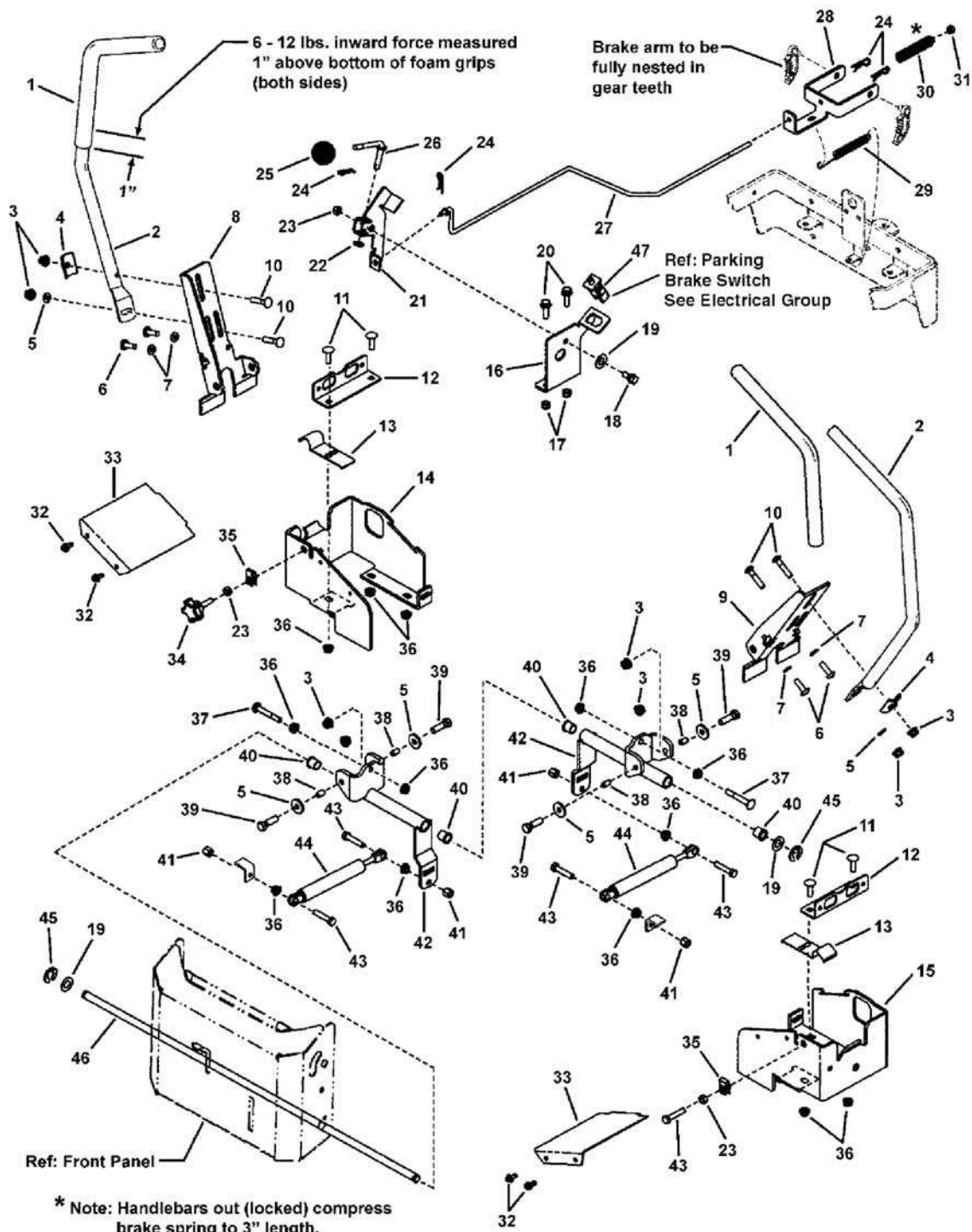
The above parts group applies to the following Mfg. Nos.:

7800629 - E20M42

Controls Group

NOTE: Unless noted otherwise,
use the standard hardware torque
specification chart.

7501106



The above parts group applies to the following Mfg. Nos.:
7800629 - E20M42

Controls Group

REF NO	PART NO.	QTY.	DESCRIPTION
1	1726410SM	2	GRIP, Foam Handle Bar
2	1727796ASM	2	TUBE, Handle
3	1960686SM	10	NUT, Hex Flange, Nylock, 5/16-18
4	1720452SM	2	CLAMP, Tube, Saddle
5	1919381SM	6	WASHER, Flat, 5/16
6	1960086SM	4	SCREW, Truss Head Torx, 5/16-18 x 7/8
7	1917356SM	4	LOCKWASHER, Spring 5/16
8	1727926ASM	1	BRACKET, Tube Mount LH
9	1727927ASM	1	BRACKET, Tube Mount RH
10	1931338SM	4	BOLT, Carriage, 5/16-18 x 1-3/4
11	1931335SM	4	BOLT, Carriage, 5/16-18 x 1, GR5
12	1727663ASM	2	BRACKET, "L" Switch
13	1727919SM	2	CLIP, Brake
14	1728010ASM	1	BRACKET, Mounting Handle Pivot, RH
15	1728009ASM	1	BRACKET, Mounting Handle Pivot, LH
16	7300992AYP	1	BRACKET, Brake Pivot- ZT
17	7091298YP	3	NUT, Hex Nylock, 5/16-18-3B
18	7015761YP	1	BOLT, Shoulder, 5/16-18
19	1960027SM	3	WASHER, Flat, 1/2
20	7091591SM	2	BOLT, Hex Flange Lock, 5/16-18 x 1
21	7300993AYP	1	ARM, Brake Pivot- ZT
22	7090188SM	1	WASHER, Flat, .34 x .69 x .08
23	1920161SM	7	NUT, Hex Jam, 5/16-18
24	1722460SM	4	HAIR PIN
25	7072403YP	1	KNOB, w/5/16-18 NILN (Brake/Clutch)
26	7102567YP	1	ROD, Park Brake- ZT (5/16-18 thread)
27	7102551YP	1	ROD, Manual Parking Brake (1/4-20 threads)
28	1727814ASM	1	BRACKET, Dual Brake
29	1709314SM	1	SPRING, Extension
30	1729277SM	1	SPRING, Compression
31	1960694SM	1	NUT, Hex Flange Nylock, 1/4-20
32	1925003SM	4	CASCREW, Hex Washer Head, Taptite, 1/4-20 x 1/2
33	1727933ASM	2	COVER, Lower Handle
34	1726839SM	1	KNOB, 5/16-18 x 1-1/4" Extension Thread
35	1960717SM	2	NUT, 5/16-18 Speed (Lug Type .050/.200, Black)
36	1931277SM	8	NUT, 5/16-18 Hex Flange Lock, Small - Black
37	1960723SM	2	BOLT, Carriage, 5/16-18 x 2-1/4, GR5
38	1666697SM	4	SPACER, Powdered Metal
39	1921977SM	5	CAPSCREW, Hex Head, 5/16-18 x 1-1/4, GR5
40	1715025SM	4	BUSHING
41	1919438SM	4	NUT, Hex Lock, ESNA Light, 5/16-18
42	1727603ASM	2	PIVOT CONTROL
43	1921221SM	4	CAPSCREW, Hex Head, 5/16-18 x 1-1/2, GR5

Footnotes

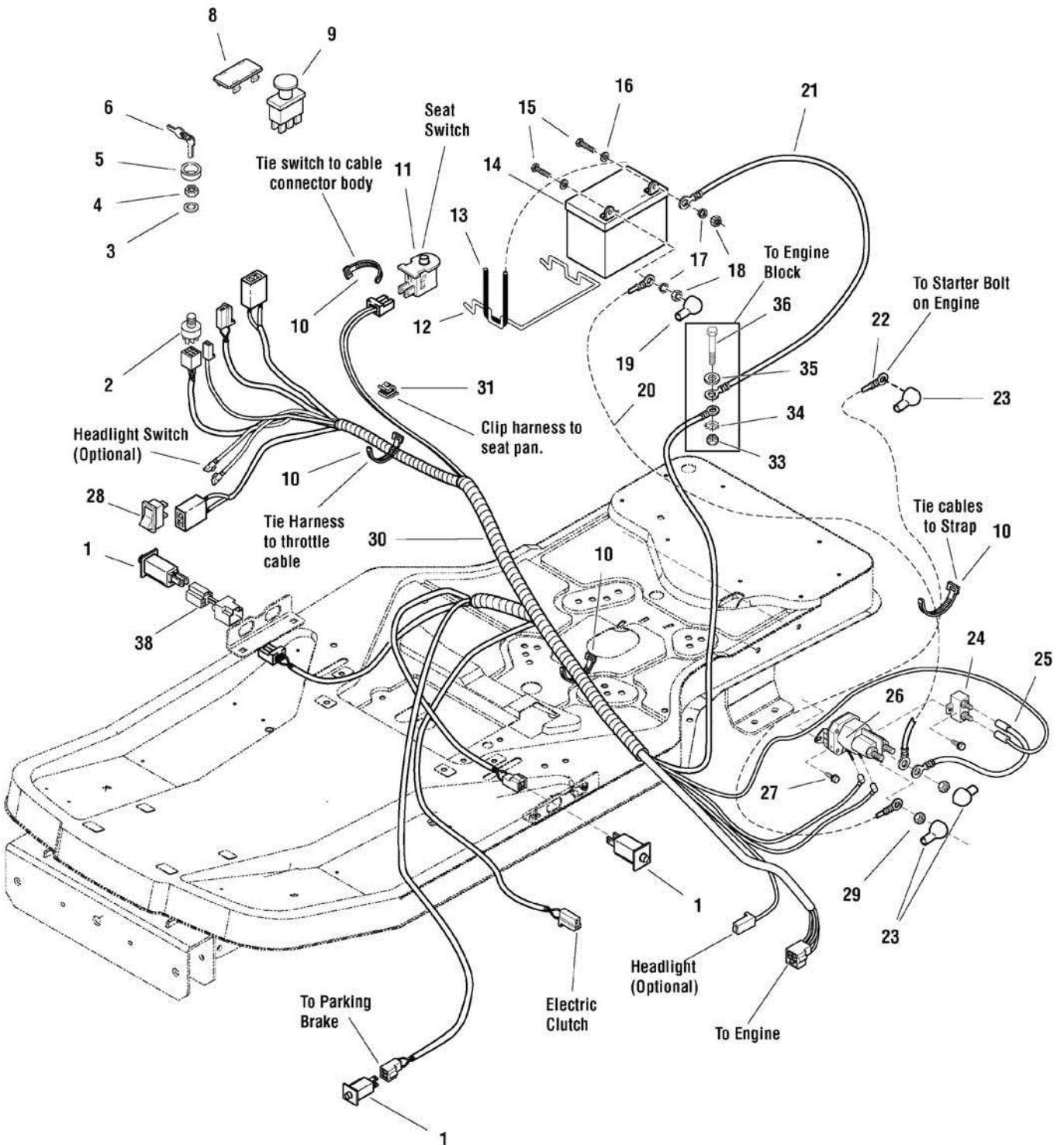
The above parts group applies to the following Mfg. Nos.:

7800629 - E20M42

Electrical Group

NOTE: Unless noted otherwise, use the standard hardware torque specification chart.

7501733



The above parts group applies to the following Mfg. Nos.:
7800629 - E20M42

Electrical Group

REF NO	PART NO.	QTY.	DESCRIPTION
1	7022886YP	3	SWITCH, Push Button
2	1686734SM	1	SWITCH ASSEMBLY, Ignition, 5/8-32 6 Pin Indak
3	1960547SM	1	LOCKWASHER, Internal Tooth, 5/8 Thin
4	1717549SM	1	NUT, Hex Flange, 5/8-32 IGN SW Die Cast
5	1717550SM	1	COVER, Ignition Switch
6	1717163SM	2	KEYS
8	1722611SM	1	PLUG, Hole
9	1722887SM	1	SWITCH, PTO Push/Pull Symbols
10	1701011SM	4	TIE, Self Locking, .184 WD 7.31 LG
11	7023354YP	1	SWITCH, Seat
12	1667805SM	1	BRACE, Battery, .19 DIA Wire
13	1665872SM	1	STRAP, Black Rubber, .19 SQ 7.88 OD Battery
14	1685215SM	1	BATTERY, 12 Volt 6 Cell 230 CCA
15	2823341SM	2	CAPSCREW, Hex Head, 1/4-20 x 3/4, G5
16	2821319SM	2	WASHER, 1/4, .27 ID x .62 OD x .05 THK
17	2816964SM	2	LOCKWASHER, Spring, 1/4
18	2816622SM	2	NUT, Hex, 1/4-20 NC-2B
19	1677296SM	1	BOOT, Insulator, Red PVC Warning
20	1716549SM	1	CABLE, # 6 x 10 LG, Red Two-Ring Terminals
21	1713163SM	1	CABLE, # 6 X 26 LG, Two-Ring Terminals
22	1727668SM	1	CABLE, # 6 x 15 LG, Two-Ring Terminals
23	1724588SM	3	COVER, Terminal Red PVC
24	1665238SM	1	BREAKER, Circuit, 12 Volt 20 AMP
25	1665237SM	1	WIRE, 12 Gauge, 7.9 LG
26	7075622SM	1	SOLENOID, Two Terminals, Trombetta
27	1925003SM	2	SCREW, Hex Washer Head Taptite, 1/4-20 x 1/2
28	1734141SM	1	SWITCH, Electric Height of Cut
29	2860750SM	2	NUT, Hex Keps, 5/16-24
30	7103103YP	1	HARNESS, Wiring
31	2172434SM	1	CABLE, Clip
33	1931277SM	1	NUT, Hex Whiz Lock Flange, 5/16-18
34	2820427SM	1	LOCKWASHER, External Tooth, 3/8
35	1919326SM	1	WASHER, 5/16, .34 ID x 3/4 OD x .06 THK
36	7027174SM	1	CAPSCREW, Hex Head, 5/16-18 x 2, G5
38	1734025SM	1	WIRING ASSEMBLY, Jumper All Conditions Shutdown

Footnotes

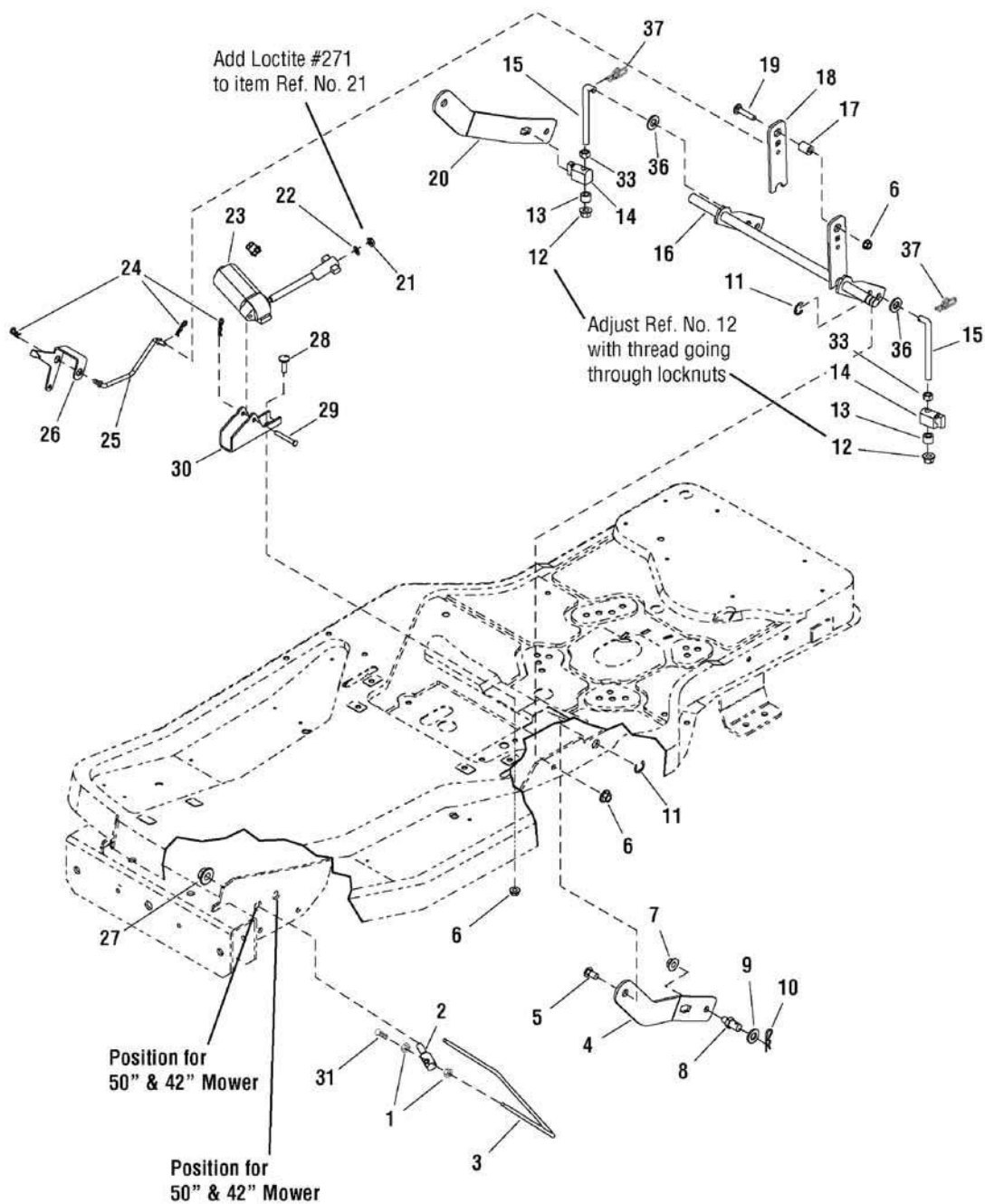
The above parts group applies to the following Mfg. Nos.:

7800629 - E20M42

Lift Group

NOTE: Unless noted otherwise,
use the standard hardware torque
specification chart.

7501112



The above parts group applies to the following Mfg. Nos.:

7800629 - E20M42

Lift Group

REF NO	PART NO.	QTY.	DESCRIPTION
1	1922007SM	4	NUT, Hex Jam, 7/16-14, NC-2B
2	1734042SM	2	TRUNNION
3	1733381SM	1	ROD, Bail
4	1733535ASM	1	ARM, Mower Lift L.H.
5	009X67MA	2	BOLT, Shoulder
6	1931277SM	5	NUT, Hex Whiz Lock Flange, 5/16-18
7	1931211SM	4	NUT, Hex Whiz Lock Flange, 3/8-16
8	094067MA	2	PIN, Threaded Shoulder
9	1960170SM	2	WASHER, 1/2"
10	1960074SM	2	CLIP, Hair Pin
11	1704420SM	2	RING, Klipring, 5/8"
12	1960687SM	2	NUT, Hex Flange, 3/8-16 ESNA
13	1666294SM	2	SPACER
14	1731894SM	2	TRUNNION
15	1734217SM	2	ROD, Mower Lift 3/8-16 x 1 LG Thread
16	1733356ASM	1	LIFT SHAFT ASSEMBLY
17	1673796SM	1	SPACER, Powdered Metal
18	1734336ASM	1	ARM, Lift Trunnion
19	1931337SM	1	CARRIAGE BOLT, 5/16-18 x 1-1/2, G5
20	1733536ASM	1	ARM, Mower Lift R.H.
21	1960757SM	1	NUT, Hex, 1/4-20 L.H. Thread
22	1921319SM	1	WASHER, 1/4"
23	1733513SM	1	MOTOR, Mini Actuator (Used on Models Before S/N 2013960660)
23	1738294YP	1	MOTOR, Mini Actuator (Used on Models After S/N 2013960660)
24	1722460SM	3	PIN, Quick
25	1733572SM	1	ROD, Height of Cut Indicator (Used on Models Before S/N 2013960660)
25	7104286YP	1	ROD, Height of Cut Indicator (Used on Models After S/N 2013960660)
26	1733454SM	1	INDICATOR, Height of Cut
27	1930644SM	2	NUT, Hex Two-Way Lock, 1/2-13
28	1931335SM	1	BOLT, Carriage, 5/16-18 x 1, G5
29	1668344SM	1	PIN, Shear
30	1733533ASM	1	BRACKET, Electric Motor Mount (Used on Models Before S/N 2013960660)
30	7301148BZYP	1	BRACKET, Electric Motor Mount (Used on Models After S/N 2013960660)
31	1960711SM	2	BOLT, Carriage, 3/8-16 x 3/4, G5
33	1916950SM	2	NUT, Hex 3/8 - 16
36	1924940SM	2	WASHER, 3/8
37	7091593SM	2	PIN, Cotter, Self Lock, 3/8

Footnotes

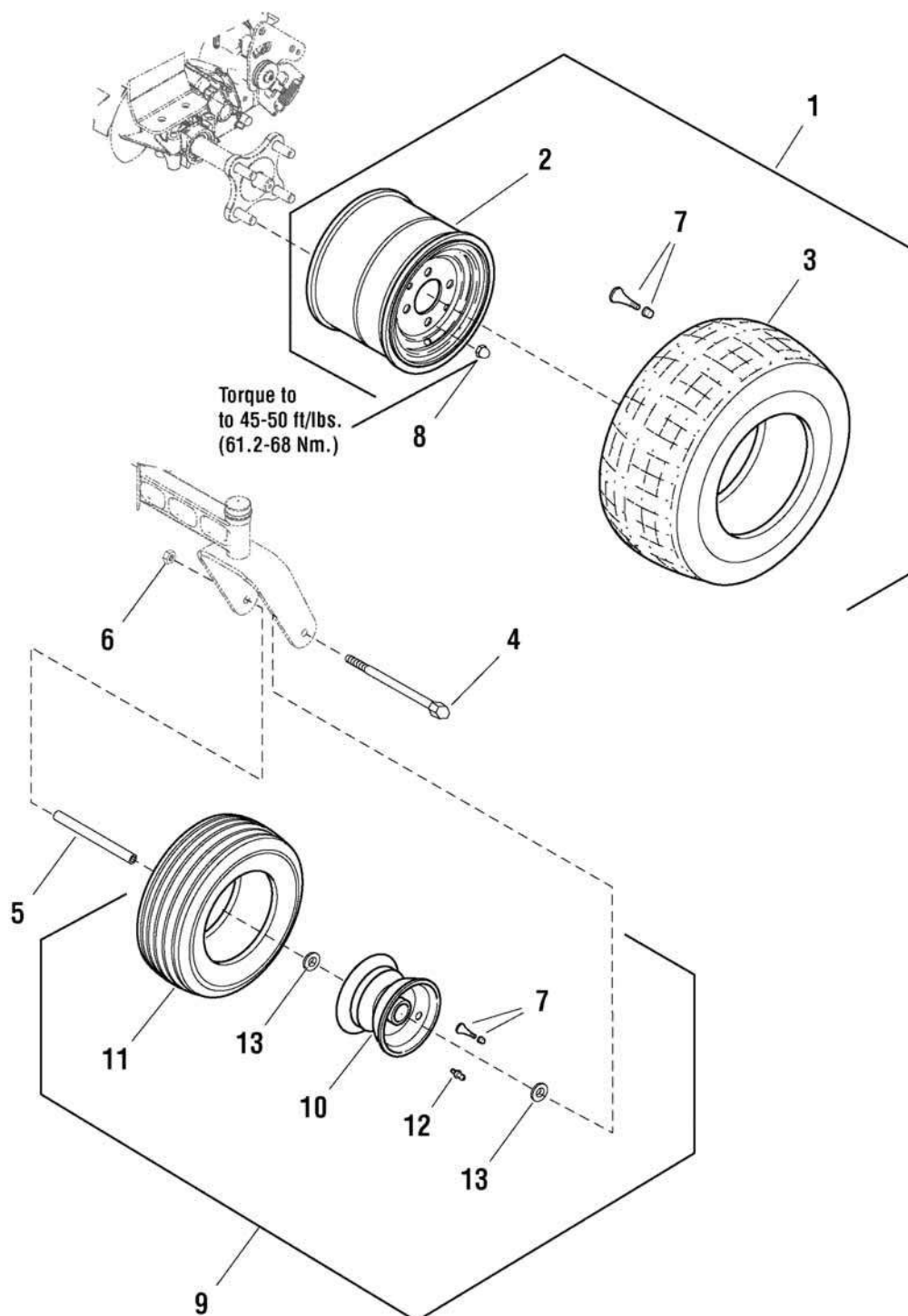
The above parts group applies to the following Mfg. Nos.:

7800629 - E20M42

Wheel & Tire Group

W7501728

NOTE: Unless noted otherwise,
use the standard hardware torque
specification chart.



The above parts group applies to the following Mfg. Nos.:

7800629 - E20M42

Wheel & Tire Group

REF NO	PART NO.	QTY.	DESCRIPTION
1	1726383SM	2	WHEEL & TIRE ASSEMBLY, 18 x 8-1/2-8
2	1734878SM	2	WHEEL, 18 x 8-1/2 - 8 (Included with Ref. 1)
3	1734877SM	2	TIRE, 18 x 8-1/2 - 8 (Included with Ref. 1)
4	7091772SM	2	CAPSCREW, Hex Head
5	1734841SM	2	TUBE, Caster Wheel Spacer
6	7090839SM	2	NUT, Hex Center Lock
7	2172353SM	2	VALVE STEM & CAP (Included with Ref. 1 & 9)
8	2177725SM	8	NUT, Hex Lug, 7/16-20
9	1734013SM	2	WHEEL & TIRE ASSEMBLY, 11 x 4-5
10	1734876SM	2	WHEEL, 11 x 4 - 5 (Included with Ref. 9)
11	1734875SM	2	TIRE, 11 x 4 - 5 (Included with Ref. 9)
12	7104428YP	2	FITTING, Lube
13	1739281YP	2	BUSHING, Wheel (Included with Ref. 9)

Not for
Reproduction

Footnotes

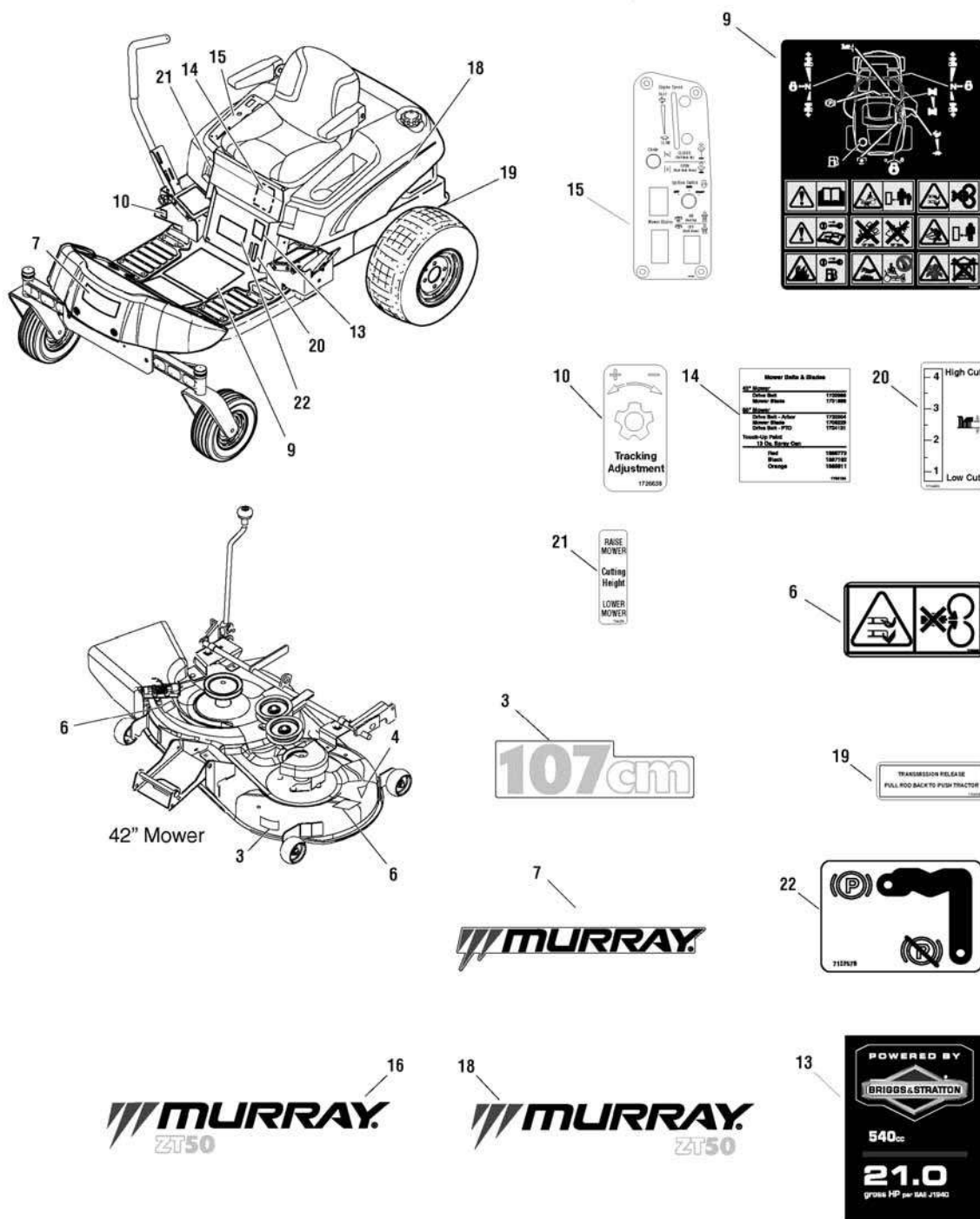
The above parts group applies to the following Mfg. Nos.:

7800629 - E20M42

Decals Group

D7501728

NOTE: Unless noted otherwise, use the standard hardware torque specification chart.



The above parts group applies to the following Mfg. Nos.:
7800629 - E20M42

Decals Group

REF NO	PART NO.	QTY.	DESCRIPTION
3	7102763YP	1	DECAL, Cut Width
4	-----	1	* DECAL, OPEI Certified ANSI
6	1720389SM	2	DECAL, Danger Rotating Blades
7	1742246YP	1	DECAL, Murray
9	7103832YP	1	DECAL, Operation
10	1726638SM	1	DECAL, Tracking Adjustment
13	7103172YP	1	DECAL, Engine/HP
14	1734184SM	1	DECAL, Belt & Blade
15	7103831YP	1	DECAL, Instrument Panel
16	7102707YP	1	DECAL, Murray Strip, Right
18	7102706YP	1	DECAL, Murray Strip, Left
19	1734532SM	1	DECAL, Transmission Release Instructions
20	1734539SM	1	DECAL, Height of Cut without Best Cut
21	1734538SM	1	DECAL, Switch for Height of Cut
22	7102578YP	1	DECAL, ZT, Brake, Parking

Not for
Reproduction

Footnotes

* Not a servicable part.

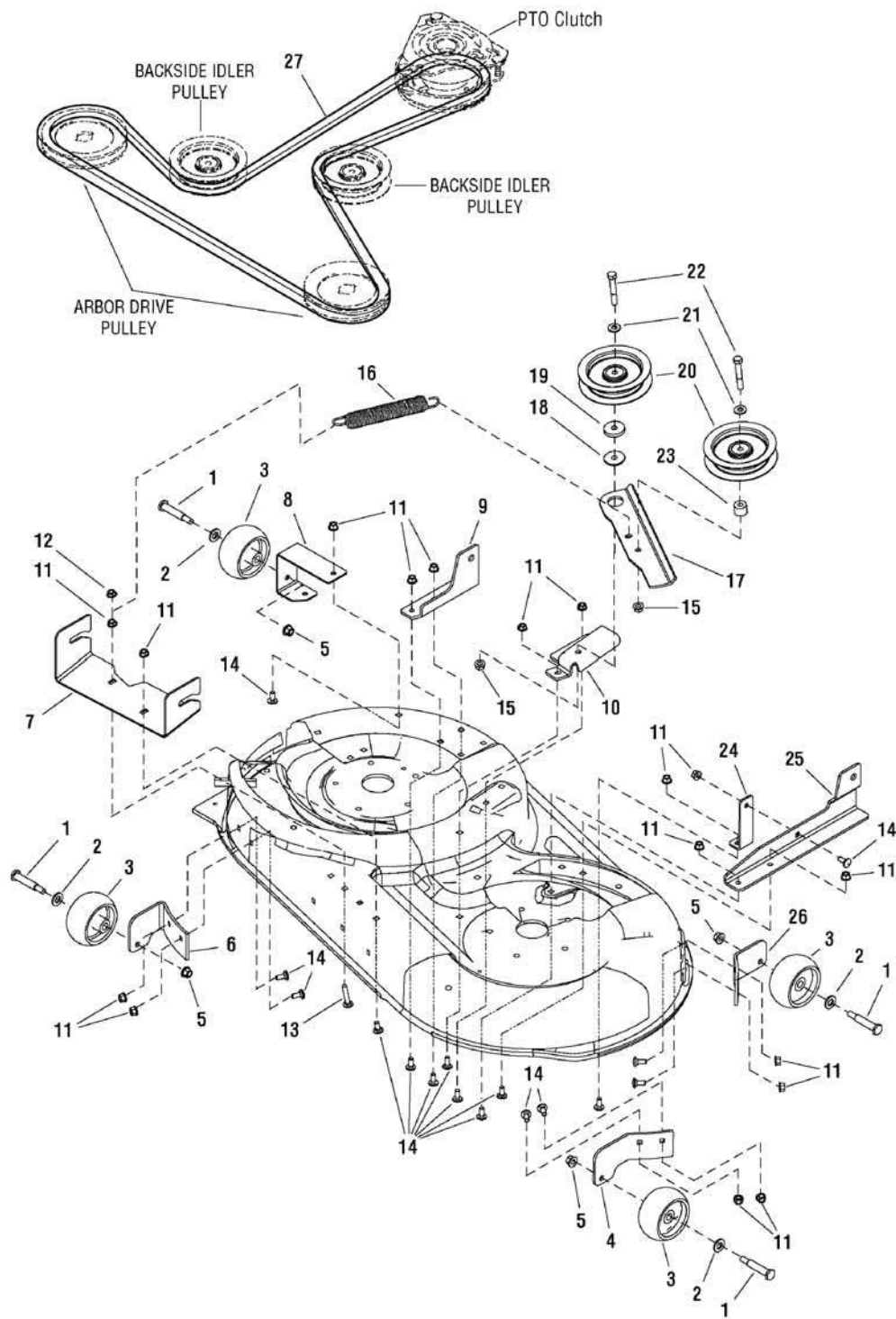
The above parts group applies to the following Mfg. Nos.:

7800629 - E20M42

42" Mower Deck - Clutch & Support

NOTE: Unless noted otherwise,
use the standard hardware torque
specification chart.

7501167



The above parts group applies to the following Mfg. Nos.:

7800629 - E20M42

42" Mower Deck - Clutch & Support

REF NO	PART NO.	QTY.	DESCRIPTION
1	2108765SM	4	BOLT, Shoulder (Gauge Wheel) 3/8-16 x 2.781 x 3/4
2	1960170SM	4	WASHER, .51 ID x 1 OD x 1/10 THK
3	1714760SM	4	GAUGE WHEEL
4	1732258BMYP	1	BRACKET, Gauge Wheel, Front, Left
5	1960687SM	4	NUT, Hex Flange, 3/8-16 ESNA
6	1734344BMYP	2	BRACKET, Gauge Wheel R.H. Front
7	1733578BMYP	1	HITCH, Mower Front
8	1734185BMYP	1	BRACKET, Gauge Wheel, Rear, Right
9	1733576BMYP	1	SUPPORT, Mower Rear, Right
10	1734242ASM	1	BRACKET, Fixed Idler
11	1931277SM	17	NUT, Hex Flange Whiz Lock, 5/16-18
12	1935048SM	1	NUT, Hex Two-Way Lock, 5/16-18
13	1931338SM	1	BOLT, Carriage, 5/16-18 x 1-3/4, G5
14	1931333SM	16	BOLT, Carriage, 5/16-18 x 3/4, G5
15	1931211SM	2	NUT, Hex Flange Whiz Lock, 3/8-16
16	1733844SM	1	SPRING, Extension
17	1734243ASM	1	ARM, Idler
18	1714255SM	1	SPACER, Powdered Metal
19	1960534SM	1	WASHER, 3/8, .41 ID x 1-1/2 OD x 1/4 THK
20	1732360SM	2	PULLEY, Idler, 4 OD x .378 ID x 1
21	1924940SM	2	WASHER, 3/8
22	1922130SM	2	CAPSCREW, Hex Head, 3/8-16 x 2-1/4, G5
23	1667812SM	1	SPACER
24	1733577ASM	1	BRACE, Mower Support
25	1733575ASM	1	SUPPORT, Mower Rear Left
26	1731403ASM	1	SUPPORT, Gauge Wheel, Rear, Left
27	1734048SM	1	V-BELT, A-Wedge

Footnotes

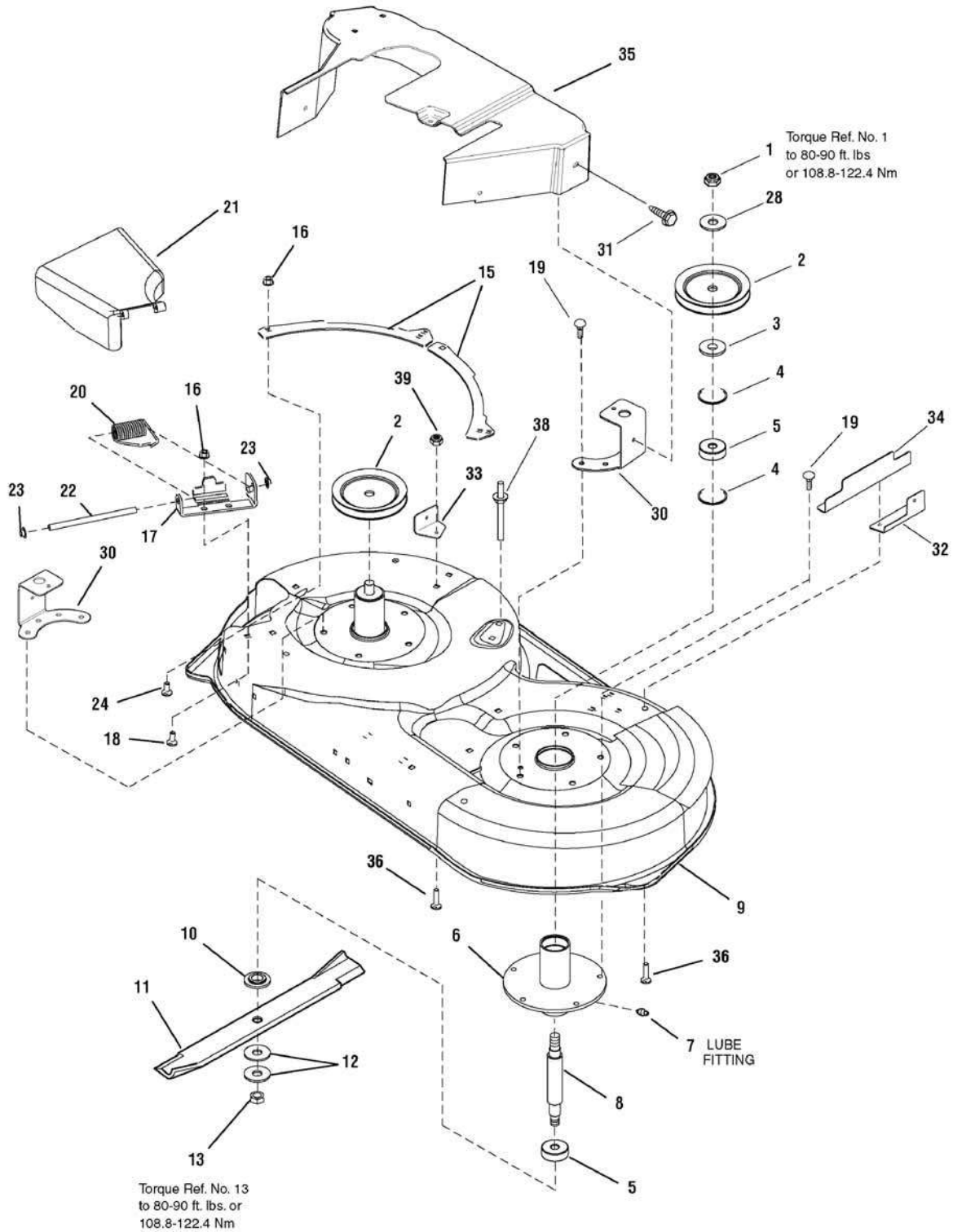
The above parts group applies to the following Mfg. Nos.:

7800629 - E20M42

42" Mower Deck - Housing & Arbor Group, Export

NOTE: Unless noted otherwise,
use the standard hardware torque
specification chart.

7501262



The above parts group applies to the following Mfg. Nos.:

7800629 - E20M42

42" Mower Deck - Housing & Arbor Group, Export

REF NO	PART NO.	QTY.	DESCRIPTION
1	1922014SM	2	NUT, Hex Nylock, 5/8
2	1734064SM	2	PULLEY, Drive
3	7072440SM	2	SPACER, Pulley
4	7012491SM	4	RING, Retaining
5	7013313SM	4	BEARING, Spindle
6	1731372ASM	2	TUBE & PLATE ASSEMBLY, Spindle
7	1704314SM	2	LUBE, Fitting
8	7072537SM	2	SHAFT, Spindle
9	1730100ZSM	1	HOUSING, 42"
10	1731917SM	2	WASHER, Spidle Blade
11	1731898ASM	2	BLADE
12	7024467SM	4	WASHER, Belleville
13	7091633SM	2	NUT, Hex, 9/16
15	092426E701MA	2	PLATE, Rear
16	1960686SM	6	NUT, ESNA, 5/16
17	094956E701MA	1	BRACKET, Hinge
18	1931333SM	5	BOLT, Carriage, 5/16 - 18 x 3/4
19	1923683SM	10	SCREW, Taptite, 3/8 - 16 x 3/4
20	0166x4MA	1	SPRING, Torsion
21	094707MA	1	DEFLECTOR
22	094957ZMA	1	ROD, Deflector
23	1960093SM	2	PUSHNUT
24	1921333SM	1	CAPSCREW, 5/16 - 18 x 1
28	7091546SM	2	LOCKWASHER, Internal Tooth, 5/8
30	1734039ASM	2	SUPPORT, Pulley Cover
31	1924856SM	6	SCREW, Taptite, 5/16 - 18 x 1/2
32	7301040BMYP	1	BRACKET, Cover, Mounting, Left
33	7301041BMYP	1	BRACKET, Cover, Mounting, Right
34	7301045BMYP	1	BRACKET, Guard, Left
35	7102967YP	1	COVER, 42in Deck
36	7090799SM	2	BOLT, Shoulder, 5/16-18 x 5/8
38	7029303YP	1	STANDOFF
39	1930645SM	1	NUT, Hex Flange, Two Way Lock, 3/8-16

Footnotes

The above parts group applies to the following Mfg. Nos.:

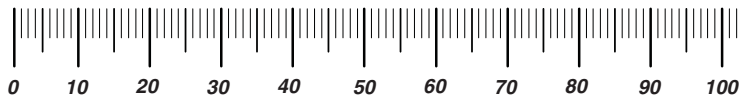
7800629 - E20M42

Not for
Reproduction

Hardware Identification & Torque Specifications

Torque Specification Chart								
FOR STANDARD METRIC MACHINE HARDWARE (Tolerance ± 20%)								
Property Class	5.6 Class 5.6		8.8 Class 8.8		10.9 Class 10.9		12.9 Class 12.9	
	in/lbs ft/lbs	Nm.	in/lbs ft/lbs	Nm.	in/lbs ft/lbs	Nm.	in/lbs ft/lbs	Nm.
M3	5.88	.56	13.44	1.28	19.2	1.80	22.92	2.15
M4	13.44	1.28	30.72	2.90	43.44	4.10	52.56	4.95
M5	26.4	2.50	60.96	5.75	5.97	8.10	7.15	9.7
M6	44.64	4.3	7.3	9.9	10.3	14	12.1	16.5
M7	5.2	7.1	12.1	16.5	16.9	23	19.9	27
M8	7.7	10.5	17.7	24	25	34	29	40
M10	15	21	35	48	50	67	59	81
M12	26	36	61	83	86.2	117	103	140
M14	42	58	101	132	136	185	162	220
M16	64	88	147	200	210	285	250	340
M18	89	121	202	275	287	390	346	470
M20	126	171	290	390	405	550	486	660
M22	169	230	390	530	559	745	656	890
M24	217	295	497	375	708	960	840	1140
M27	320	435	733	995	1032	1400	1239	1680
M30	435	590	995	1350	1401	1900	1681	2280
M33	590	800	1349	1830	1902	2580	2278	3090
M36	759	1030	1740	2360	2441	3310	2935	3980
M39	988	1340	2249	3050	3163	4290	3798	5150

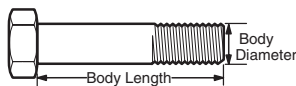
The guides and ruler furnished below are designed to help you select the appropriate hardware.



Nut, M8

Thread Diameter (mm)
Inside Diameter (in)
Threads per inch

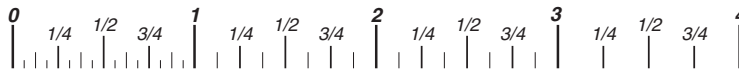
Nut, 1/2-16



Screw, M8- 1.25 x 25

Thread Diameter (mm)
Body Diameter
Distance between threads (mm)
Threads per inch
Body Length (mm)
Body Length (in)

Screw, 1/2- 16 x 2



Standard Hardware Sizing

When a washer or nut is identified as 1/2" (M8), this is the *Nominal size*, meaning the *inside diameter* is 1/2 inch (8mm metric thread diameter); if a second number is present it represents the *threads per inch* (distance between threads).

When bolt or capscrew is identified as 1/2 - 16 x 2" (M8 - 1.25 x 50), this means the *Nominal size*, or body diameter is 1/2 inch (8mm metric thread diameter), the second number, 16, represents the *threads per inch*, (1.25 thread diameter). The final number is the body length of the bolt or screw, 2 inches (50mm).

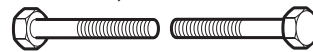
Torque Specification Chart						
FOR STANDARD MACHINE HARDWARE (Tolerance ± 20%)						
Hardware Grade	No Marks SAE Grade 2		SAE Grade 5		SAE Grade 8	
	in/lbs ft/lbs	Nm.	in/lbs ft/lbs	Nm.	in/lbs ft/lbs	Nm.
8-32	19	2.1	30	3.4	41	4.6
8-36	20	2.3	31	3.5	43	4.9
10-24	27	3.1	43	4.9	60	6.8
10-32	31	3.5	49	5.5	68	7.7
1/4-20	66	7.6	8	10.9	12	16.3
1/4-28	76	8.6	10	13.6	14	19.0
5/16-18	11	15.0	17	23.1	25	34.0
5/16-24	12	16.3	19	25.8	29	34.0
3/8-16	20	27.2	30	40.8	45	61.2
3/8-24	23	31.3	35	47.6	50	68.0
7/16-14	30	40.8	50	68.0	70	95.2
7/16-20	35	47.6	55	74.8	80	108.8
1/2-13	50	68.0	75	102.0	110	149.6
1/2-20	55	74.8	90	122.4	120	163.2
9/16-12	65	88.4	110	149.6	150	204.0
9/16-18	75	102.0	120	163.2	170	231.2
5/8-11	90	122.4	150	204.0	220	299.2
5/8-18	100	136	180	244.8	240	326.4
3/4-10	160	217.6	260	353.6	386	525.0
3/4-16	180	244.8	300	408.0	420	571.2
7/8-9	140	190.4	400	544.0	600	816.0
7/8-14	155	210.8	440	598.4	660	897.6
1-8	220	299.2	580	788.8	900	1,244.0
1-12	240	326.4	640	870.4	1,000	1,360.0

NOTES

- These torque values are to be used for all hardware excluding: locknuts, self-tapping screws, thread forming screws, sheet metal screws and socket head setscrews.
- Recommended seating torque values for locknuts:
 - for prevailing torque locknuts - use 65% of grade 5 torques.
 - for flange whizlock nuts and screws - use 135% of grade 5 torques.
- Unless otherwise noted on assembly drawings, all torque values must meet this specification.

Common Hardware Types

Hex Head Capscrew



Washer



Lockwasher

Carriage Bolt



Hex Nut

Wrench & Fastener Size Guide

1/4" Bolt or Nut Wrench—7/16"	5/16" Bolt or Nut Wrench—1/2"	3/8" Bolt or Nut Wrench—9/16"	7/16" Bolt or Nut Wrench (Bolt)—5/8" Wrench (Nut)—11/16"	1/2" Bolt or Nut Wrench—3/4"
M6 Bolt or Nut Wrench—10mm	M8 Bolt or Nut Wrench—13mm	M10 Bolt or Nut Wrench—17mm	M12 Bolt or Nut Wrench—19mm	M14 Bolt or Nut Wrench—22mm

Not for
Reproduction

**IT IS THE POLICY OF BRIGGS & STRATTON CORP. TO IMPROVE ITS PRODUCTS
WHENEVER IT IS POSSIBLE AND PRACTICAL TO DO SO. WE RESERVE THE RIGHT TO
MAKE CHANGES OR ADD IMPROVEMENTS AT ANY TIME WITHOUT INCURRING ANY
OBLIGATION TO MAKE SUCH CHANGES ON PRODUCTS.**

Briggs & Stratton Yard Power Products Group

3515 N. 124 Street / PO Box 702
Wauwatosa, WI 53222 USA

www.murray.com

© Copyright 2011 by Briggs & Stratton Corporation
Milwaukee, WI, USA. All rights reserved