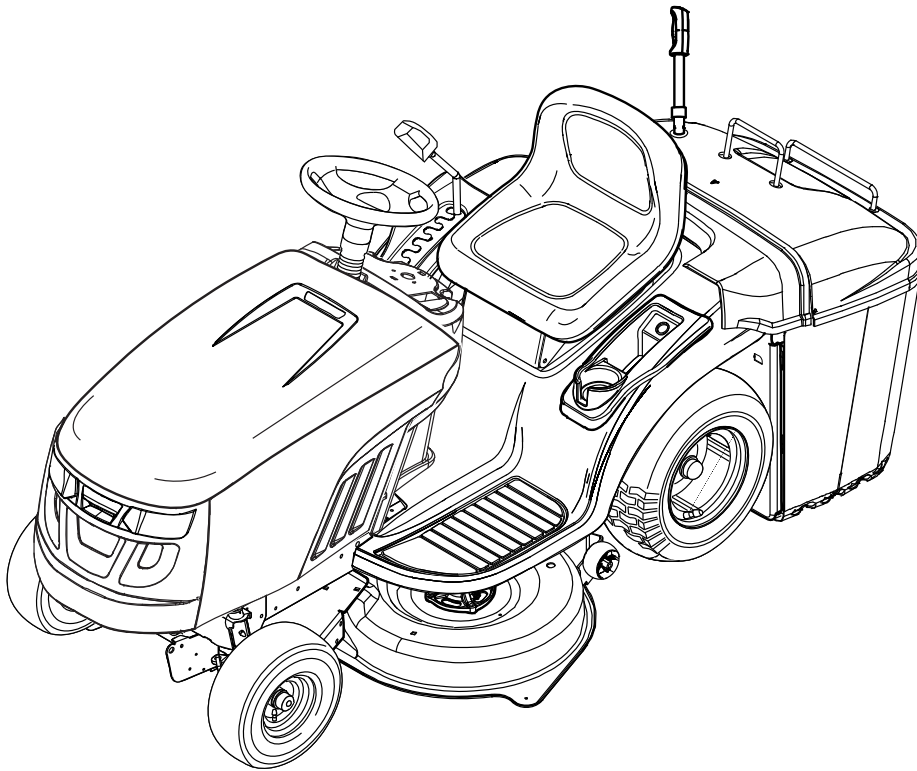


*Parts Manual for*

# **SNAPPER®**

## **17.5, 18, 22 & 26 HP 96cm & 107cm Rear Discharge European Tractor RD Series**

| <i>Model No.</i> | <i>Description</i> |
|------------------|--------------------|
| 2691113-00       | ERPX17538RDF       |
| 2691114-00       | ERPX1838RDF        |
| 2691107-00       | ERTX2242RDF        |
| 2691108-00       | ERTX2642RDF        |



**Briggs & Stratton Yard Power Products Group**

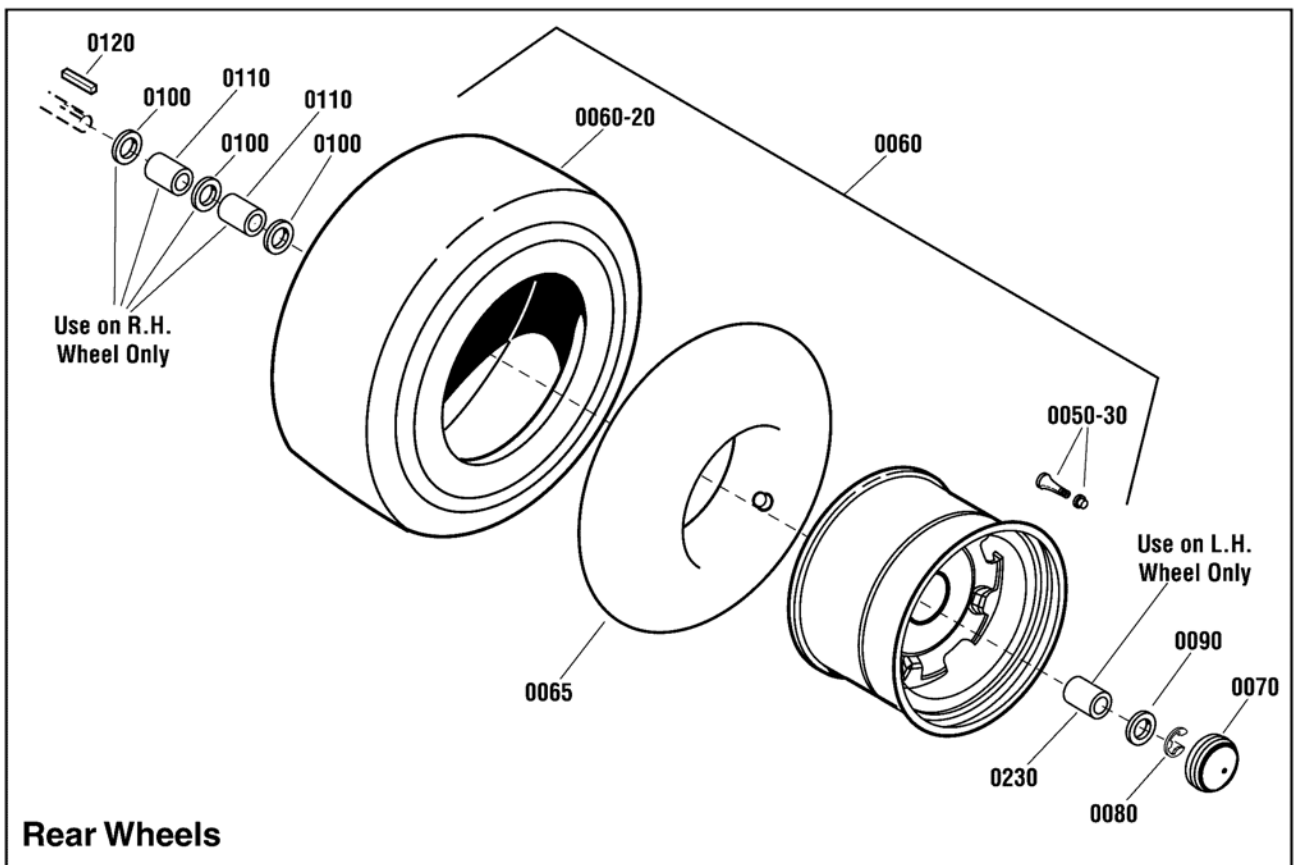
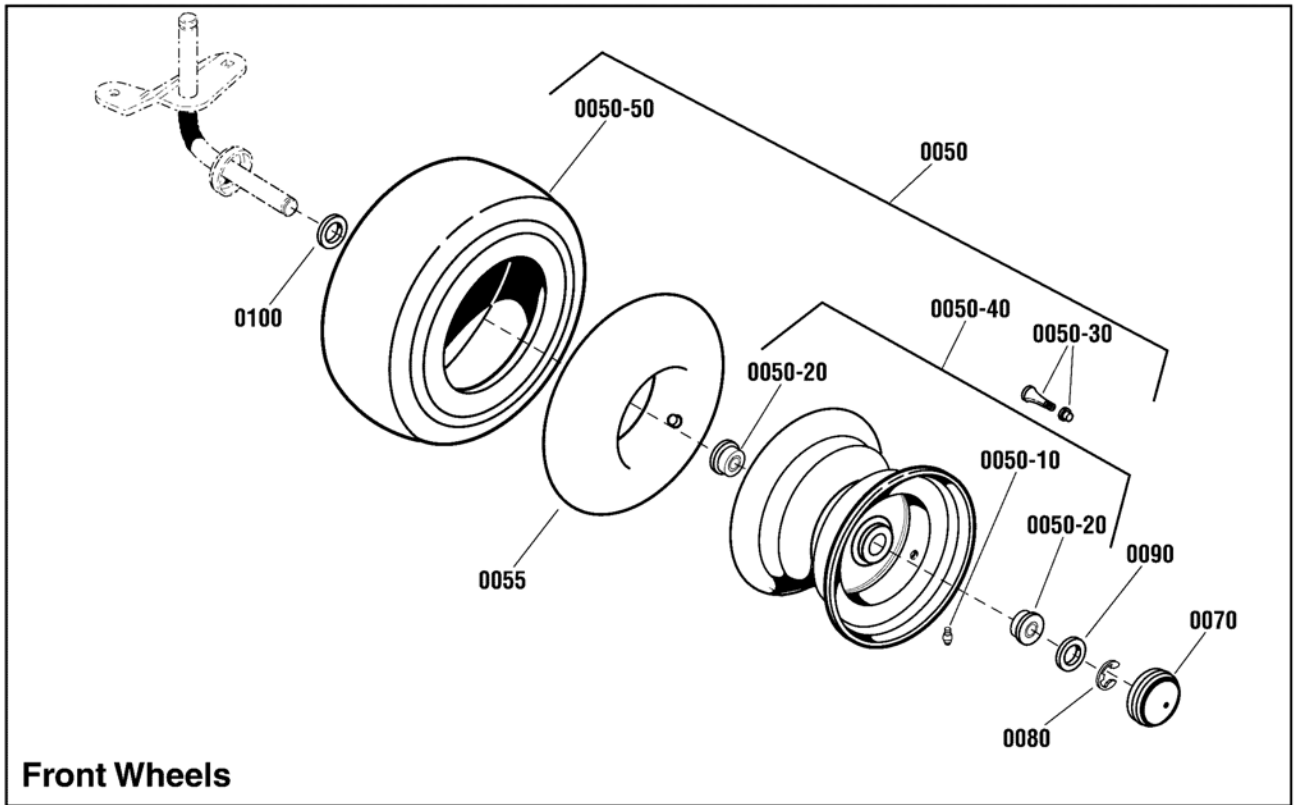
535 Macon Road  
McDonough, GA, 30253 U.S.A.  
800-935-2967

**Manual No.** 7106020  
**Revision:** C 9/5/2013



| <b>PAGE</b> | <b>GROUP</b>                                     |
|-------------|--|
| 4           | Wheel & Tire Group                               |
| 6           | Hood, Grille & Dash Group                        |
| 8           | Seat Deck & Fuel Tank Group                      |
| 10          | Steering Group                                   |
| 12          | Frame & Front Axle Group                         |
| 16          | Controls Group                                   |
| 18          | Engine Group                                     |
| 20          | Transmission Group - Hydro Gear 324-0610         |
| 22          | Transmission SERVICE PARTS - Hydro Gear 324-0610 |
| 28          | Lift Group                                       |
| 30          | 96cm Mower Deck - Housing, Arbors & Blade        |
| 32          | 96cm Mower Deck - Clutch Group                   |
| 34          | 96cm Mower Deck - Support Group                  |
| 36          | 107cm Mower Deck                                 |
| 40          | Guard Group                                      |
| 42          | Collector Group - 280 Liter                      |
| 46          | Collector Group - 350 Liter                      |
| 50          | Decal Group                                      |
| 52          | Electrical Group                                 |

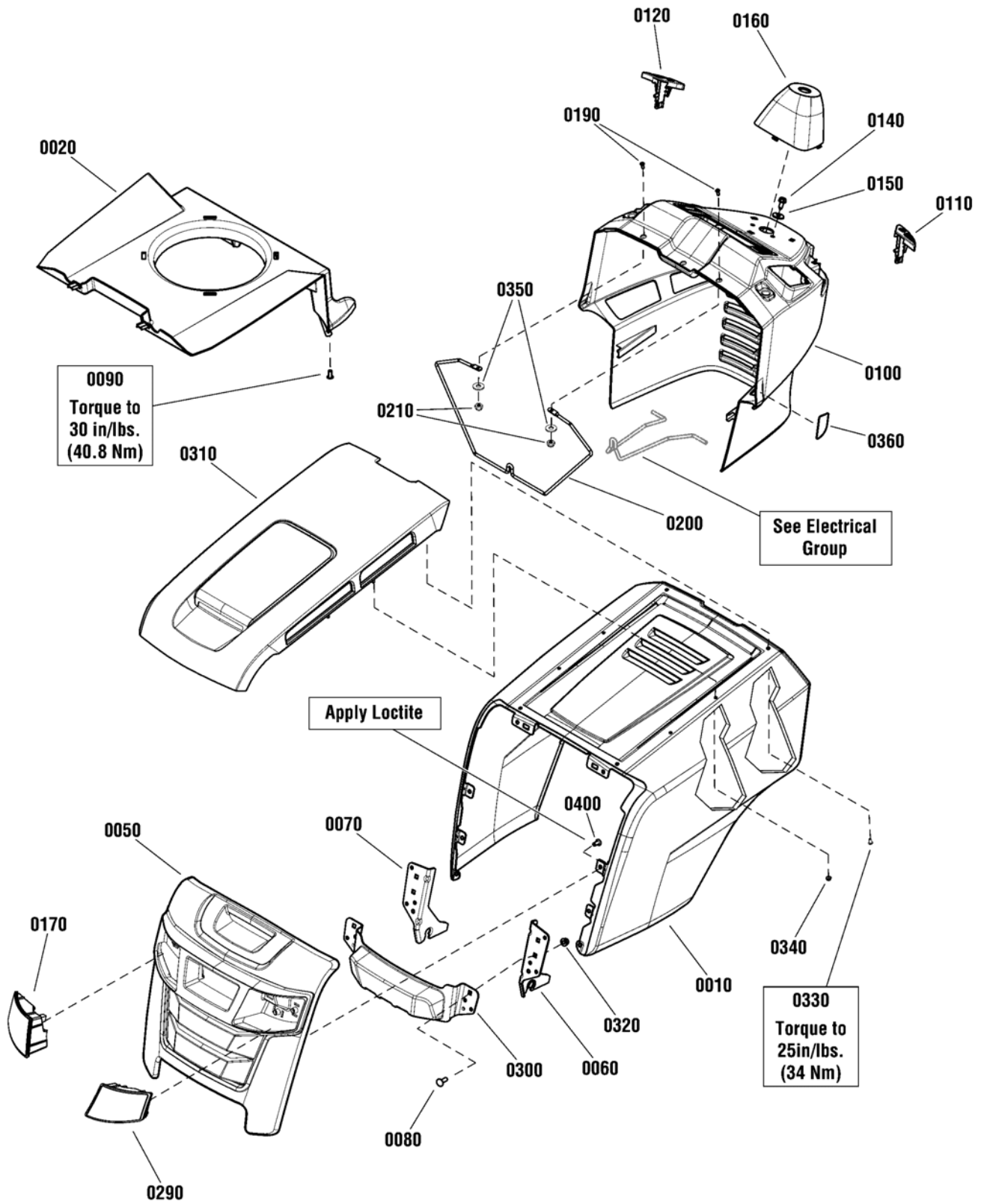
**Wheel & Tire Group**



| <b>Item</b> | <b>Part No</b> | <b>Qty</b> | <b>Description</b>  |
|-------------|----------------|------------|---|
| 0050        | 1729708SM      | 2          | WHEEL& TIRE ASSEMBLY, Front (Includes Ref. Nos. 0050-10, 0050-20, 0050-30, 0050-40 & 0050-50)                   |
| 0050-10     | 2812808SM      | 1          | FITTING, Lube   |
| 0050-20     | 1713167SM      | 2          | BEARING, 3/4  |
| 0050-30     | 2172353SM      | 4          | VALVE STEM & CAP  |
| 0050-40     | 1726301SM      | 1          | WHEEL & BUSHINGS ASSEMBLY, Front (Includes Ref. Nos. 0050-10 & 0050-30)   |
| 0050-50     | 1731951SM      | 1          | TIRE, Kenda, Turf Rider, Front, 15 x 6.00 - 6   |
| 0055        | 1664090SM      | 2          | TUBE, Tire, Front   |
| 0060        | 885457YP       | 2          | WHEEL & TIRE ASSEMBLY, Rear, 20 X 8-8 (Use on 17.5 & 18 Gross HP Models) (Includes Ref. Nos. 0050-30 & 0060-20) |
| 0060        | 1732324        | 1          | WHEEL & TIRE ASSEMBLY, Rear, 22 x 10-8 (Use on 22 & 26 Gross HP Models) (Includes Ref. Nos. 0050-30 & 0060-20)  |
| 0060-20     | -----          | 1          | TIRE, Rear, K358 x 20 x 8.94-8 (Not a serviceable part, order Ref. 0060)  |
| 0060-20     | -----          | 2          | TIRE, Rear, K358 x 22 x 10-8 (Not a serviceable part, order Ref. 0060)  |
| 0065        | 2164247SM      | 2          | TUBE, Tire, Rear  |
| 0070        | 094618MA       | 4          | HUB CAP   |
| 0080        | 0011X3MA       | 4          | E-RING  |
| 0090        | 17X195MA       | 4          | WASHER, Flat  |
| 0100        | 17X160MA       | 6          | WASHER, Flat, 3/4 x 1-1/4   |
| 0110        | 1730181SM      | 2          | SPACER, 3/4 ID x 1-1/4 OD x 1-5/8, RH (Use on R.H. Side Only)   |
| 0120        | 021553MA       | 2          | KEY, Square, 3/16   |
| 0230        | 885578YP       | 1          | SPACER, Wheel, LH (Use on L.H. Side Only)   |

**Footnotes:**

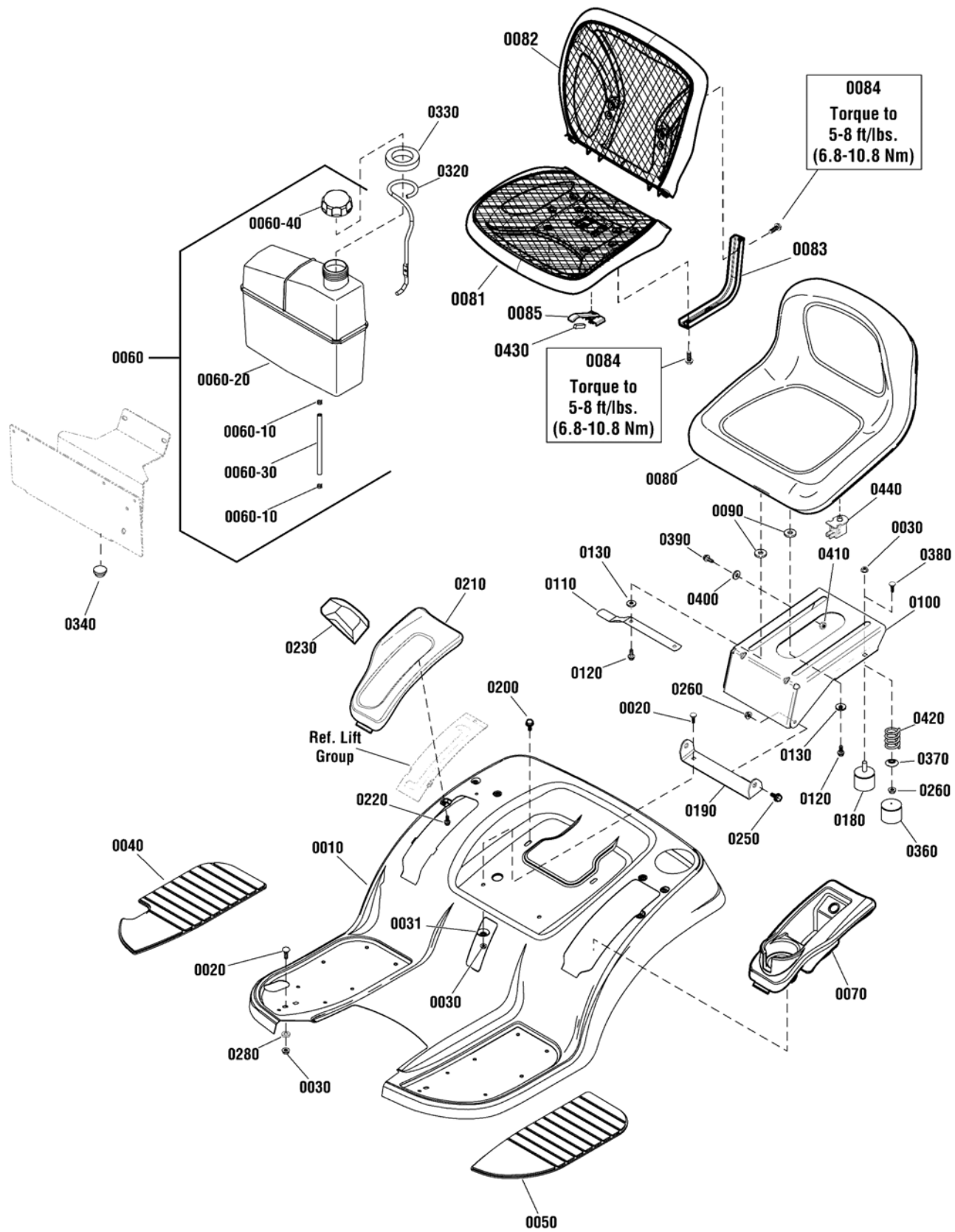
# Hood, Grille & Dash Group



| <b>Item</b> | <b>Part No</b> | <b>Qty</b> | <b>Description</b>   |
|-------------|----------------|------------|--|
| 0010        | 1753164DYP     | 1          | HOOD, One Piece (Use on 17.5 & 18 Gross HP Models)           |
| 0010        | 1752930DYP     | 1          | HOOD, One Piece, Vent Holes (Use on 22 & 26 Gross HP Models) |
| 0020        | 1738734YP      | 1          | AIR DUCT   |
| 0050        | 1752929YP      | 1          | GRILLE, Front  |
| 0060        | 1738566AYP     | 1          | HINGE, Hood, LH  |
| 0070        | 1738565AYP     | 1          | HINGE, Hood, RH  |
| 0080        | 7091714YP      | 2          | BOLT, Carriage, 5/16 x 1, G5                                 |
| 0090        | 1754203YP      | 2          | SCREW, 7mm x 16mm  |
| 0100        | 885842YP       | 1          | DASH   |
| 0110        | 1738789YP      | 1          | KNOB, Parking Brake  |
| 0120        | 1738788YP      | 1          | KNOB, Cruise   |
| 0140        | 1664847SM      | 2          | SCREW, Hex Washer Head Taptite, 5/16-18 x 3/4                |
| 0150        | 1919381SM      | 2          | WASHER, 5/16 x 1   |
| 0160        | 1738790YP      | 1          | COVER, Steering Shaft  |
| 0170        | 1753167YP      | 1          | HEADLIGHT, Led, LH (Use on 17.5 & 18 Gross HP Models)        |
| 0170        | 1753171YP      | 1          | HEADLIGHT, Led, LH (Use on 22 & 26 Gross HP Models)          |
| 0190        | 1739942YP      | 2          | SCREW, Pan Head Phillips, #10-24 x 7/8                       |
| 0200        | 885843YP       | 1          | ROD, Dash Support, 1/4 Dia. x 10"                            |
| 0210        | 1933896SM      | 2          | NUT, Ny-Lock 10-24   |
| 0290        | 1753168YP      | 1          | HEADLIGHT, Led, RH (Use on 17.5 & 18 Gross HP Models)        |
| 0290        | 1753172YP      | 1          | HEADLIGHT, Led, RH   |
| 0300        | 1753169BMYP    | 1          | BUMPER, Front  |
| 0310        | 1752925YP      | 1          | TRIM, Hood   |
| 0320        | 1960686SM      | 2          | NUT, Hex Flange, 5/16-18, ESNA                               |
| 0330        | 1739329YP      | 4          | SCREW, PT5   |
| 0340        | 189164GS       | 4          | PALNUT, 3/16   |
| 0350        | 1960353SM      | 2          | WASHER, 1/4 x 27/32 OD                                       |
| 0360        | 1753895YP      | 1          | TRIM, Protective   |
| 0400        | 1754203YP      | 8          | SCREW, 7mm x 16mm  |

**Footnotes:**

# Seat Deck & Fuel Tank Group



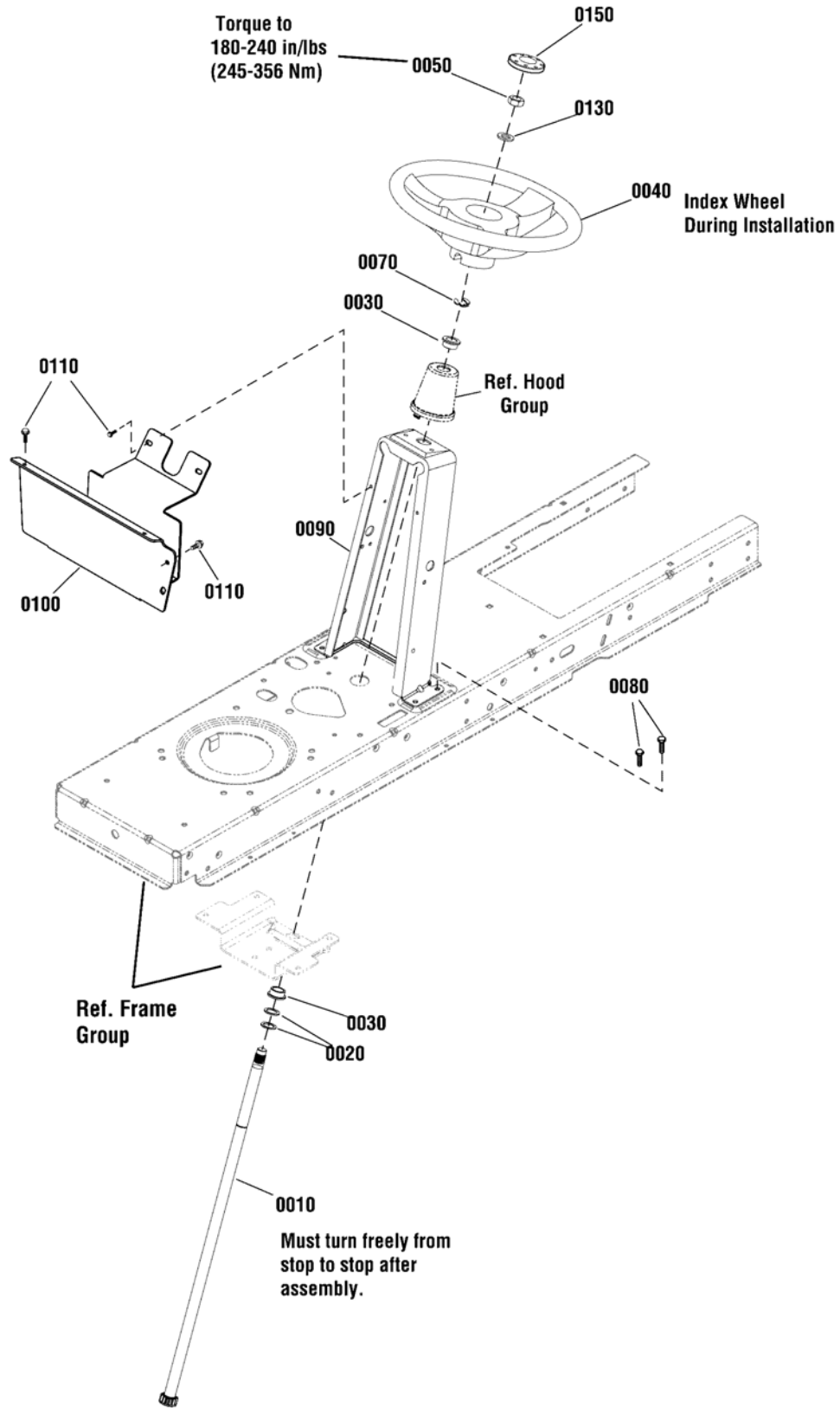


## Seat Deck & Fuel Tank Group

| Item    | Part No     | Qty | Description  |
|---------|-------------|-----|--|
| 0010    | 885687DYP   | 1   | SEAT DECK, Red   |
| 0020    | 703185      | 4   | BOLT, Carriage, 5/16-18 x 3/4, G5                                    |
| 0030    | 1931277SM   | 4   | NUT, 5/16-18, G5 (Use on 22 & 26 Gross HP Models)                    |
| 0031    | 1709256SM   | 2   | WASHER, Spring, 5/16   |
| 0040    | 1728007SM   | 1   | PAD, Footrest, RH  |
| 0050    | 1728006SM   | 1   | PAD, Footrest, LH  |
| 0060    | 885896YP    | 1   | FUEL TANK ASSEMBLY   |
| 0060-10 | 095197MA    | 2   | CLAMP, Hose  |
| 0060-20 | -----       | 1   | FUEL TANK, 6L  |
| 0060-30 | 1734981SM   | 1   | HOSE, Fuel, 15.0"  |
| 0060-40 | 795027      | 1   | CAP, Fuel  |
| 0070    | 1739015YP   | 1   | POD, LH  |
| 0080    | 1754214YP   | 1   | SEAT, 11"  |
| 0081    | 1738013YP   | 1   | SEAT, Bottom, Mesh (Use on 22 & 26 Gross HP Models)                  |
| 0082    | 1753182YP   | 1   | SEAT, Back, Mesh (Use on 22 & 26 Gross HP Models)                    |
| 0083    | 1737848AYP  | 2   | SUPPORT, Mesh Seat (Use on 22 & 26 Gross HP Models)                  |
| 0084    | 703354      | 8   | SCREW, 5/16-18 x 3/4 (Use on 22 & 26 Gross HP Models)                |
| 0085    | 1738015YP   | 1   | SWITCH, Seat (Use with Mesh Seat)                                    |
| 0090    | 1731300SM   | 4   | SPACER, 5/16 ID x 1-1/4 OD x 5/16"                                   |
| 0100    | 1727265BMYP | 1   | SUPPORT, Seat  |
| 0110    | 1727268BMYP | 1   | LATCH, Seat  |
| 0120    | 1930595SM   | 4   | SCREW, Hex Flange, Whiz Lock, 5/16-1-1/4                             |
| 0130    | 703298      | 4   | WASHER, 5/16   |
| 0180    | 1739934YP   | 2   | BUMPER, Rubber (Use on 22 & 26 Gross HP Models)                      |
| 0190    | 885538AYP   | 1   | PIVOT, Seat  |
| 0200    | 1930601SM   | 2   | SCREW, Hex Washer Head, Taptite, 5/16-18 x 5/8                       |
| 0210    | 1739016YP   | 1   | POD, RH  |
| 0220    | 1960536SM   | 6   | SCREW, Hex Washer Head, Plastite, 1/4 x 1/2                          |
| 0230    | 1722302SM   | 1   | GRIP   |
| 0250    | 1729576SM   | 2   | BOLT, Shoulder, 5/16-18 x 1  |
| 0260    | 703115      | 4   | NUT, Flange Nylock, 5/16-18 (Use on 17.5 & 18 Gross HP Models)       |
| 0280    | 885382YP    | 2   | WASHER, Rubber   |
| 0320    | 885834YP    | 1   | ROD, Fuel Tank   |
| 0330    | 1001963MA   | 1   | RING, Foam   |
| 0340    | 1401377MA   | 2   | BUMPER, Front  |
| 0360    | 1704724SM   | 2   | COVER, Spring (Use on 17.5 & 18 Gross HP Models)                     |
| 0370    | 1709256SM   | 2   | WASHER, Spring, 5/16 (Use on 17.5 & 18 Gross HP Models)              |
| 0380    | 1960282SM   | 2   | BOLT, Carriage, 5/16-18 x 3/4, G5 (Use on 17.5 & 18 Gross HP Models) |
| 0390    | 1923114SM   | 1   | CAPSCREW, Hex Head, 1/2-13 x 1, G5                                   |
| 0400    | 1960170SM   | 1   | WASHER, 1/2  |
| 0410    | 5025038SM   | 1   | NUT, Hex, 1/2-13   |
| 0420    | 1704728SM   | 2   | SPRING, Compression (Use on 17.5 & 18 Gross HP Models)               |
| 0430    | 1750296YP   | 1   | FOAM STRIP (Use with Mesh Seat)                                      |
| 0440    | 7023354YP   | 1   | SWITCH, Seat, Push Button (Use with 11" Seat)                        |

### Footnotes:

# Steering Group

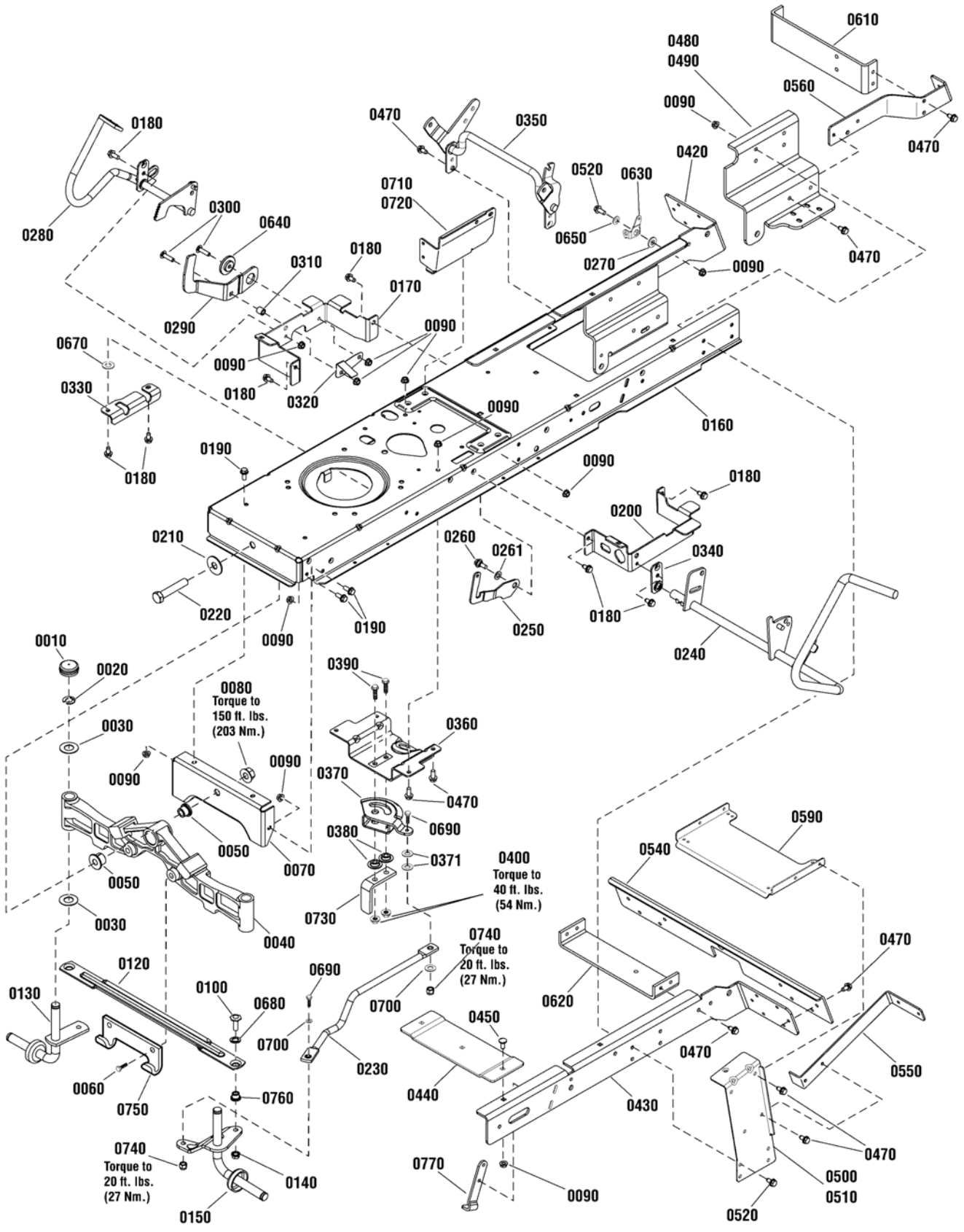


---

| <b>Item</b> | <b>Part No</b> | <b>Qty</b> | <b>Description</b>                                |
|-------------|----------------|------------|---|
| 0010        | 1727813SM      | 1          | SHAFT, Steering Gear & Spline                     |
| 0020        | 1960114SM      | 2          | WASHER, 3/4 x 1                                   |
| 0030        | 1729665SM      | 2          | BUSHING, Steering                                 |
| 0040        | 1728069SM      | 1          | STEERING WHEEL (Use on 17.5 & 18 Gross HP Models) |
| 0040        | 7078088YP      | 1          | STEERING WHEEL (Use on 22 & 26 Gross HP Models)   |
| 0050        | 1960576SM      | 1          | NUT, Hex Lock, ESNA Light, 5/8-18, Thin           |
| 0070        | 1611710SM      | 1          | RING, Klipring Extension                          |
| 0080        | 1930601SM      | 4          | SCREW, Hex Washer Head, Taptite, 5/16-18 x 5/8    |
| 0090        | 885835BMYP     | 1          | TOWER   |
| 0100        | 885839BMYP     | 1          | BRACKET, Tank                                     |
| 0110        | 1925003SM      | 5          | CAPSCREW, Hex Head, Taptite, 1/4-20 x 1/2         |
| 0130        | 1924366SM      | 1          | WASHER, 5/8 x 1-1/8                               |
| 0150        | 1725024SM      | 1          | CAP, Steering Wheel, Plain                        |

**Footnotes:**

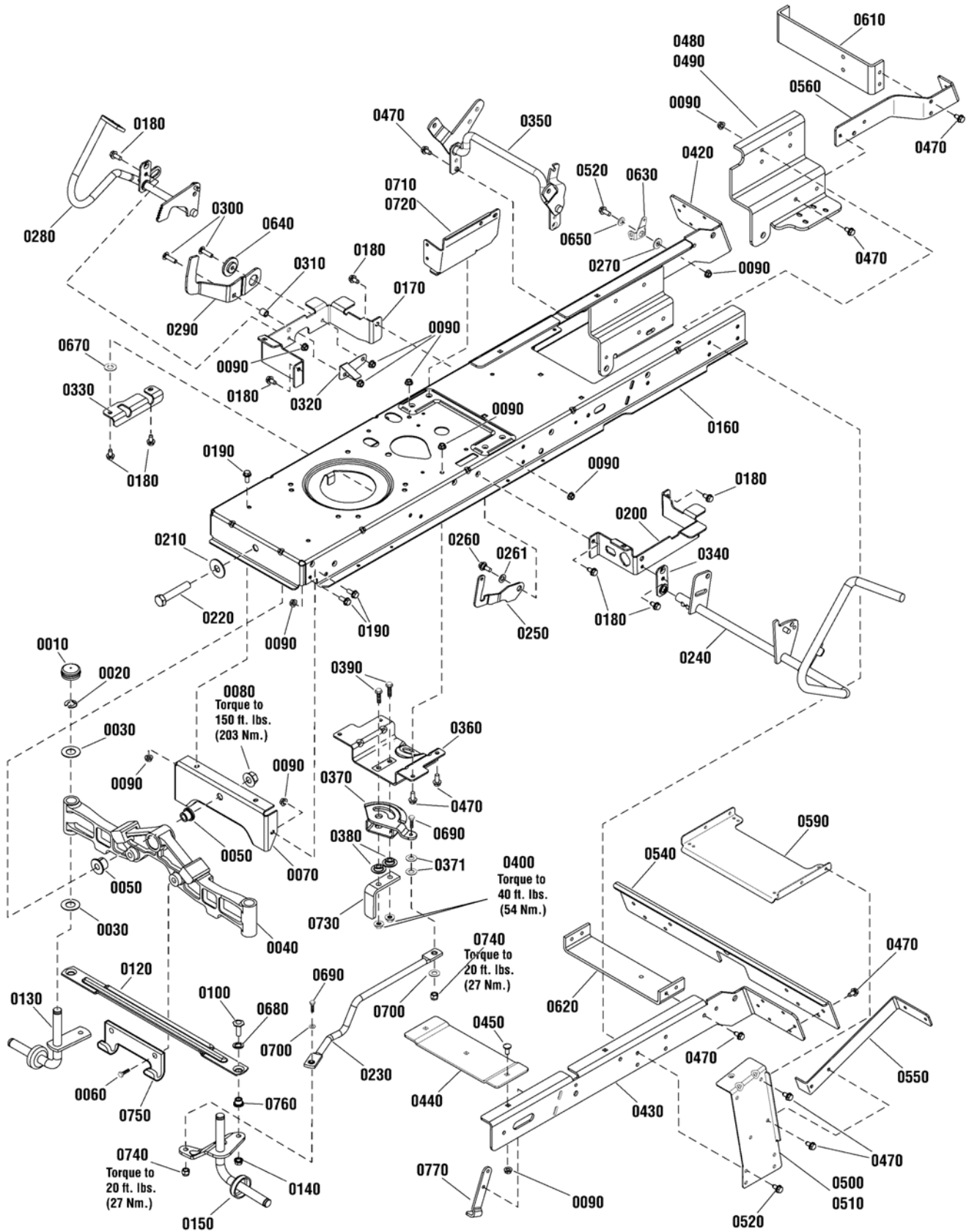
**Frame & Front Axle Group**



| <b>Item</b> | <b>Part No</b> | <b>Qty</b> | <b>Description</b>                                  |
|-------------|----------------|------------|---|
| 0010        | 1734135SM      | 2          | CAP, Hub  |
| 0020        | 1611710SM      | 2          | E-RING, 3/4   |
| 0030        | 2860183SM      | 4          | WASHER, Flat, 3/4                                   |
| 0040        | 1728018SM      | 1          | AXLE, Front   |
| 0050        | 1730186SM      | 2          | BUSHING   |
| 0060        | 1960652SM      | 2          | SCREW, Hex Flange, Whiz Lock, 7/16-14 x 1-1/2       |
| 0070        | 1727902SM      | 1          | PLATE, Axle Support                                 |
| 0080        | 2860646SM      | 1          | NUT, Hex Flange Two-Way Lock, 5/8-11                |
| 0090        | 1931277SM      | 28         | NUT, Hex Flange, Whiz Lock, 5/16-18                 |
| 0100        | 1960032SM      | 2          | CAPSCREW, Hex Head, 3/8-16 x 1-1/4, .141 Thread G5  |
| 0120        | 1751964YP      | 1          | TIE ROD   |
| 0130        | 1727872ASM     | 1          | SPINDLE & CUP ASSEMBLY, R.H.                        |
| 0140        | 1930645SM      | 2          | NUT, Hex, Flange, Locking, 3/8-16                   |
| 0150        | 1751922YP      | 1          | SPINDLE & ARM ASSEMBLY, L.H.                        |
| 0160        | 885656BMYP     | 1          | FRAME   |
| 0170        | 1727904SM      | 1          | SUPPORT, Front Footrest R.H.                        |
| 0180        | 1930601SM      | 8          | SCREW, Taptite, 5/16-18 x 5/8                       |
| 0190        | 93571MA        | 6          | CAPSCREW, Hex Head, Flange Whiz Lock, 5/16-18 x 3/4 |
| 0200        | 885536AYP      | 1          | SUPPORT, Front Footrest L.H.                        |
| 0210        | 1960035SM      | 1          | WASHER, Flat, 5/8                                   |
| 0220        | 2860744SM      | 1          | CAPSCREW, Hex Head, 5/8-11 x 3-1/4 G5               |
| 0230        | 1738051YP      | 1          | LINK, Drag  |
| 0240        | 885694YP       | 1          | PEDAL ASSEMBLY, Brake                               |
| 0250        | 1735595YP      | 1          | LATCH, Brake Lock                                   |
| 0260        | 1729576SM      | 1          | BOLT, Shoulder, 5/16-18 x 1-1/8                     |
| 0261        | 7014296YP      | 1          | WASHER  |
| 0270        | 1727935SM      | 1          | SPACER, Pivot                                       |
| 0280        | 1736714AYP     | 1          | PEDAL ASSEMBLY, Forward                             |
| 0290        | 1727246SM      | 1          | PEDAL, Reverse                                      |
| 0300        | 1960223SM      | 2          | BOLT, Carriage, 5/16-18 x 1-1/4                     |
| 0310        | 1728024SM      | 1          | SPACER, Foot Pedal                                  |
| 0320        | 1728025BMYP    | 1          | ACTUATOR, RMO Switch                                |
| 0330        | 885591AYP      | 1          | BRACKET, Pedal Pivot                                |
| 0340        | 1727911ASM     | 1          | PLATE, Bearing                                      |
| 0350        | 885579AYP      | 1          | LIFT SHAFT ASSEMBLY                                 |
| 0360        | 1727940SM      | 1          | BRACKET, Sector Support                             |
| 0370        | 1751110YP      | 1          | GEAR, Steering                                      |
| 0371        | 703298         | 2          | WASHER, 5/16  |
| 0380        | 1728122SM      | 2          | SPACER, Sector Gear                                 |
| 0390        | 1960032SM      | 2          | SCREW, Hex Head, 3/8-16 x 1-1/4, G5                 |
| 0400        | 1930645SM      | 2          | NUT, Hex Flange, Two Way Lock, 3/8-16               |
| 0420        | 885508AYP      | 1          | BRACKET, Rear Frame, RH                             |
| 0430        | 885509AYP      | 1          | BRACKET, Rear Frame, LH                             |
| 0440        | 885532AYP      | 1          | BRACE, Middle Cross                                 |

**Footnotes:**

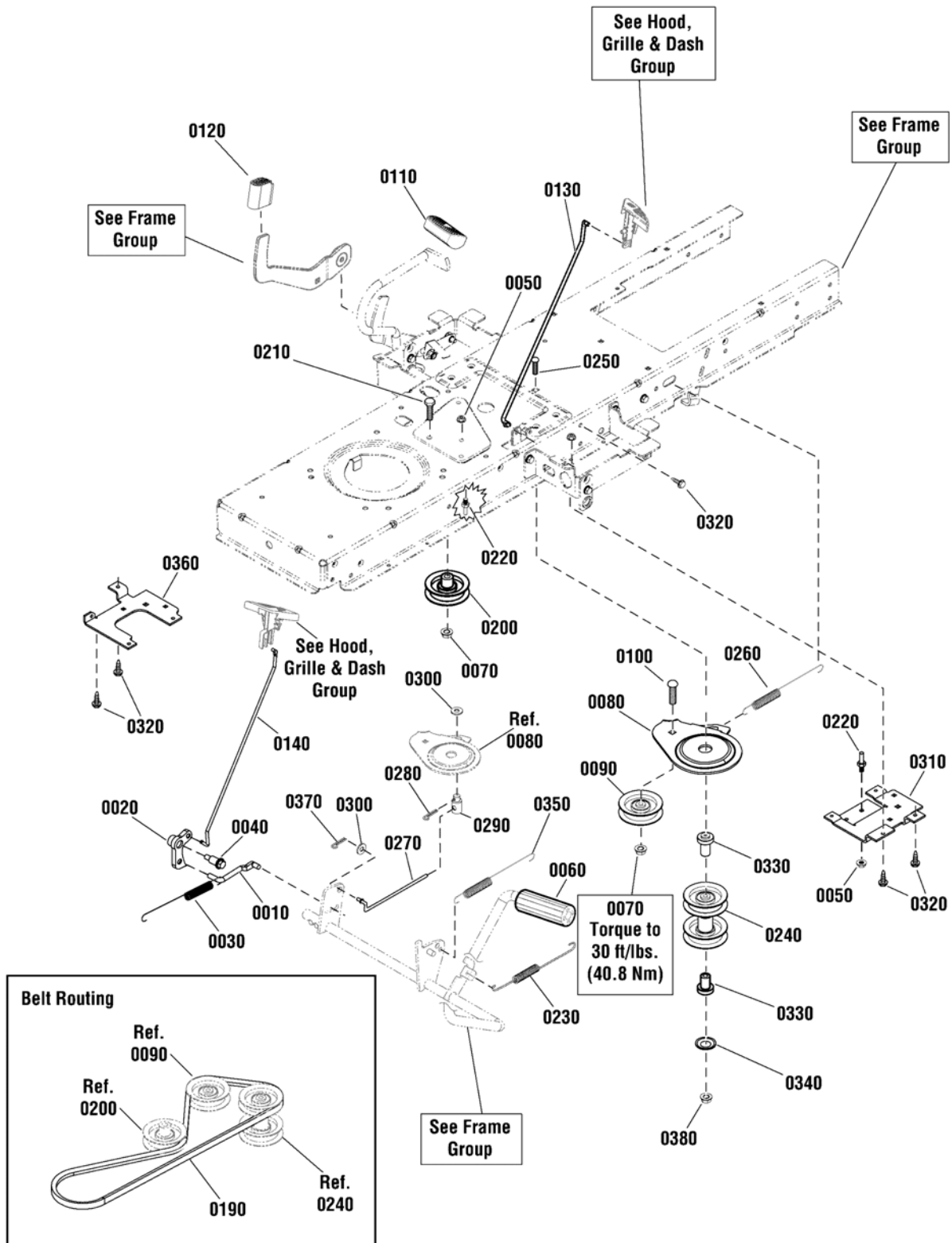
# Frame & Front Axle Group



| <b>Item</b> | <b>Part No</b> | <b>Qty</b> | <b>Description</b>                                |
|-------------|----------------|------------|---|
| 0450        | 703185         | 5          | BOLT, Carriage, Short Neck, 5/16-18 x 3/4, G5     |
| 0470        | 703228         | 33         | CAPSCREW, Hex Washer Head, Taptite, 5/16-18 x 3/4 |
| 0480        | 885474AYP      | 1          | BRACKET, Transaxle, RH                            |
| 0490        | 885475AYP      | 1          | BRACKET, Transaxle, LH                            |
| 0500        | 885411AYP      | 1          | SUPPORT, Deck, R.H.                               |
| 0510        | 885412AYP      | 1          | SUPPORT, Deck, L.H.                               |
| 0520        | 001X84MA       | 9          | CAPSCREW, Hex Head, 5/16-18 x 1, G5               |
| 0540        | 885469AYP      | 1          | BRACKET, Middle Back Plate                        |
| 0550        | 885466AYP      | 2          | SUPPORT, Upper, Back Plate                        |
| 0560        | 885467AYP      | 2          | SUPPORT, Lower, Back Plate                        |
| 0590        | 885503AYP      | 1          | BRACE, Cross Deck Support                         |
| 0610        | 885890YP       | 1          | BRACKET, Torque                                   |
| 0620        | 885486AYP      | 1          | BRACKET, Idler Mount                              |
| 0630        | 1728990ASM     | 1          | CLEVIS, Lift                                      |
| 0640        | 1727935SM      | 1          | SPACER, Pivot                                     |
| 0650        | 1960044SM      | 1          | WASHER, 5/16                                      |
| 0670        | 1919326SM      | 2          | WASHER, 5/16                                      |
| 0680        | 1960703SM      | 2          | WASHER, 5/8                                       |
| 0690        | 1921977SM      | 2          | CAPSCREW, Hex Head, 5/16-18 x 1-1/4, G5           |
| 0700        | 703302         | 2          | WASHER, 5/16                                      |
| 0710        | 885695BMYP     | 1          | BRACKET, Tower Support, LH                        |
| 0720        | 885696BMYP     | 1          | BRACKET, Tower Support, RH                        |
| 0730        | 885791YP       | 1          | UPSTOP  |
| 0740        | 1935048SM      | 2          | NUT, Hex Flange, Two Way Lock, 5/16-18            |
| 0750        | 1721918ASM     | 1          | HOOK, Mower, Hitch                                |
| 0760        | 1731912SM      | 2          | BUSHING, 3/8 ID x 5/8 OD x 1/2"                   |
| 0770        | 885527AYP      | 2          | UPSTOP  |

**Footnotes:**

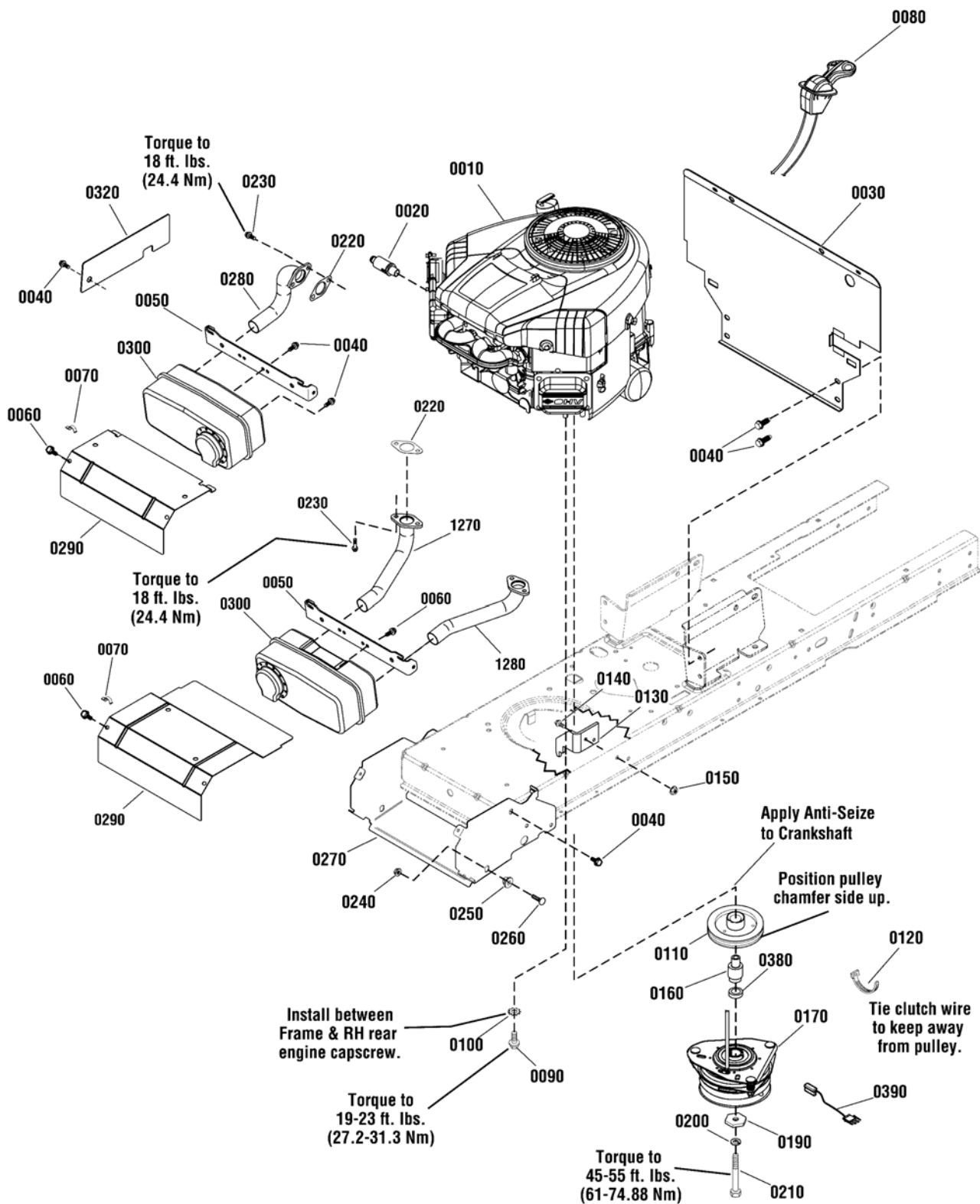
# Controls Group





| <b>Item</b> | <b>Part No</b> | <b>Qty</b> | <b>Description</b>                             |
|-------------|----------------|------------|--|
| 0010        | 1727899SM      | 1          | ROD, Cruise Latch, 2.83"                       |
| 0020        | 1727897SM      | 1          | LATCH, Cruise                                  |
| 0030        | 2159181SM      | 1          | SPRING, Extension 7-3/4                        |
| 0040        | 1728976SM      | 1          | BOLT, Shoulder, 5/16-18 x 1-5/8                |
| 0050        | 015X79MA       | 3          | NUT, Flange, 5/16-18, G5                       |
| 0060        | 1727261SM      | 1          | PEDAL, Brake Rubber                            |
| 0070        | 703158         | 2          | NUT, Hex Flange, ESNA, 3/8-16                  |
| 0080        | 885410AYP      | 1          | BRACKET, Idler Front Movable                   |
| 0090        | 885645YP       | 1          | PULLEY, 3 OD Plastic                           |
| 0100        | 703227         | 1          | BOLT, Carriage, 3/8-16 x 1-1/4                 |
| 0110        | 1721675SM      | 1          | PAD, Foot Pedal, Forward                       |
| 0120        | 1727259SM      | 1          | PAD, Foot Pedal, Reverse                       |
| 0130        | 1727267SM      | 1          | ROD, Parking Brake                             |
| 0140        | 1738760YP      | 1          | ROD, Cruise Latch                              |
| 0190        | 885895YP       | 1          | BELT, Primary, M/D (47.89" EL, HA Section)     |
| 0200        | 885894YP       | 1          | IDLER, Backside                                |
| 0210        | 1921971SM      | 1          | CAPSCREW, Hex Head, 3/8-16 x 1-3/4, G5         |
| 0220        | 885534YP       | 2          | BELT GUIDE                                     |
| 0230        | 885421YP       | 1          | SPRING, Extension                              |
| 0240        | 885426YP       | 1          | PULLEY, Secondary Stack                        |
| 0250        | 885577YP       | 1          | BOLT, Carriage, 3/8-16 x 5                     |
| 0260        | 1729620SM      | 1          | SPRING, Extension 7-1/2"                       |
| 0270        | 885683YP       | 1          | ROD, Clutch                                    |
| 0280        | 7091809YP      | 1          | PIN, Cotter                                    |
| 0290        | 021920ZMA      | 1          | NUT, Adjusting                                 |
| 0300        | 71072MA        | 2          | WASHER, Flat, 3/8                              |
| 0310        | 885684BMYP     | 1          | BRACKET, Stack Pulley, Left                    |
| 0320        | 703228         | 4          | SCREW, Hex Washer Head, Taptite, 5/16-18 x 3/4 |
| 0330        | 885575YP       | 2          | SPACER   |
| 0340        | 1931942SM      | 1          | NUT, Push Pal, 3/8                             |
| 0350        | 1721995SM      | 1          | SPRING, Extension                              |
| 0360        | 885685BMYP     | 1          | BRACKET, Stack Pulley, Right                   |
| 0370        | 703312         | 1          | PIN, Cotter                                    |
| 0380        | 015X84MA       | 1          | NUT, Hex Flange, Centerlock, 3/8-16            |

**Footnotes:**



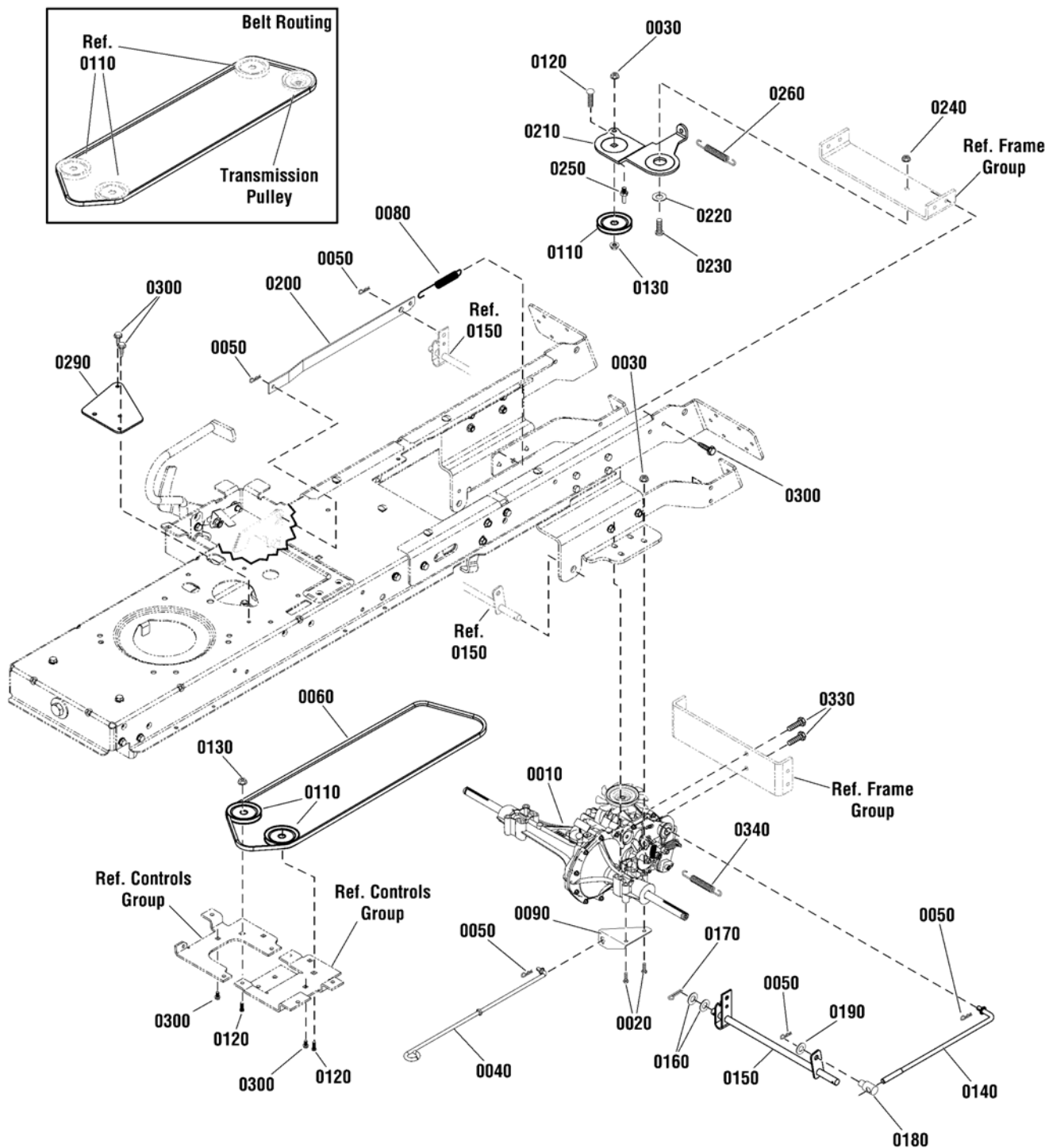
| <b>Item</b> | <b>Part No</b> | <b>Qty</b> | <b>Description</b>   |
|-------------|----------------|------------|--|
| 0010        | 31G777-0204-B1 | 1          | * ENGINE, 17.5 Gross HP Briggs & Stratton, Model 31G777-0204-B1                  |
| 0010        | 405577-3804-B1 | 1          | * ENGINE, 18 Gross HP Briggs & Stratton, Model 405577-3804-B1                    |
| 0010        | 407777-0001-B1 | 1          | * ENGINE, 22 Gross HP Briggs & Stratton, Model 407777-0001-B1                    |
| 0010        | 405577-3804-B1 | 1          | * ENGINE, 26 Gross HP Briggs & Stratton, Model 405577-3804-B1                    |
| 0020        | 1750159YP      | 1          | VALVE, Shut Off Oil Drain  |
| 0030        | 885840BMYP     | 1          | HEAT SHIELD  |
| 0040        | 1930601SM      | 10         | SCREW, Hex Washer Head, Taptite, 5/16-18 x 5/8                                   |
| 0050        | 1727976ASM     | 1          | SUPPORT, Muffler   |
| 0060        | 1925003SM      | 2          | SCREW, Hex Washer Head, Taptite, 1/4-20 x 1/2 (Qty 4 used on 18 Gross HP Models) |
| 0070        | 2834683SM      | 1          | WIRE CLIP  |
| 0080        | 1751734YP      | 1          | THROTTLE CONTROL, Choke-A-Matic (Single)   |
| 0080        | 1750217YP      | 1          | THROTTLE CONTROL, Choke-A-Matic (Twin)   |
| 0090        | 2827187SM      | 4          | SCREW, Hex Washer, Taptit, 3/8-16 x 1  |
| 0100        | 2820427SM      | 1          | LOCKWASHER, External Tooth   |
| 0110        | 1732576SM      | 1          | PULLEY & HUB ASSEMBLY, Engine  |
| 0120        | 1701011SM      | 2          | TIE, Self Locking  |
| 0130        | 885535AYP      | 1          | BRACKET, Electric Clutch Torque  |
| 0140        | 1921332SM      | 2          | CAPSCREW, Hex Head, 5/16-18 x 3/4, G5  |
| 0150        | 1931277SM      | 2          | NUT, Hex Flange, Whiz Lock, 5/16-18  |
| 0160        | 885679YP       | 1          | SPACER, Electric Clutch  |
| 0170        | 885680YP       | 1          | CLUTCH, Electric, GT1A-EH07  |
| 0190        | 1708264SM      | 1          | WASHER, 7/16   |
| 0200        | 1918199SM      | 1          | LOCKWASHER, Spring   |
| 0210        | 7102075YP      | 1          | CAPSCREW, Hex Head, 7/16-20 x 5  |
| 0220        | 1731214SM      | 1          | GASKET, Exhaust (Qty 2 used on Twin)   |
| 0230        | 690341         | 2          | ** SCREW, Hex SEMS Lock Washer 5/16-18 x 7/8 (Qty 4 used on Twin)                |
| 0240        | 1931277SM      | 2          | NUT, Hex Flange, Whiz Lock, 5/16-18  |
| 0250        | 1728086SM      | 2          | PIVOT, Hood  |
| 0260        | 1931335SM      | 2          | BOLT, Carriage, 5/16-18 x 1  |
| 0270        | 1738265AYP     | 1          | BRACKET, Muffler   |
| 0280        | 1728959SM      | 1          | EXHAUST PIPE, Single   |
| 0290        | 1727996ASM     | 1          | HEAT SHIELD, Single  |
| 0290        | 1727997ASM     | 1          | HEAT SHIELD, Twin  |
| 0300        | 885615YP       | 1          | MUFFLER, Single (Used on 17.5 Gross HP Models)                                   |
| 0300        | 1727994SM      | 1          | MUFFLER, Twin (Used on 18 Gross HP Models)                                       |
| 0300        | 885954YP       | 1          | MUFFLER, Twin (Use on 22 & 26 Gross HP Models)                                   |
| 0320        | 1736025BMYP    | 1          | GUARD, Pulley  |
| 0380        | 885810YP       | 1          | SPACER, Electric Clutch  |
| 0390        | 885815YP       | 1          | HARNESS, Ogura   |
| 1270        | 1727979SM      | 1          | EXHAUST PIPE, RH (Twin)  |
| 1280        | 1727980SM      | 1          | EXHAUST PIPE, LH (Twin)  |

**Footnotes:**

Note\* To verify your specific engine model, please reference the ID Tag located on your engine. See your local Briggs & Stratton distributor for parts and service.

Note: \*\* Purchase engine parts from engine manufacture dealer.

# Transmission Group - Hydro Gear 324-0610

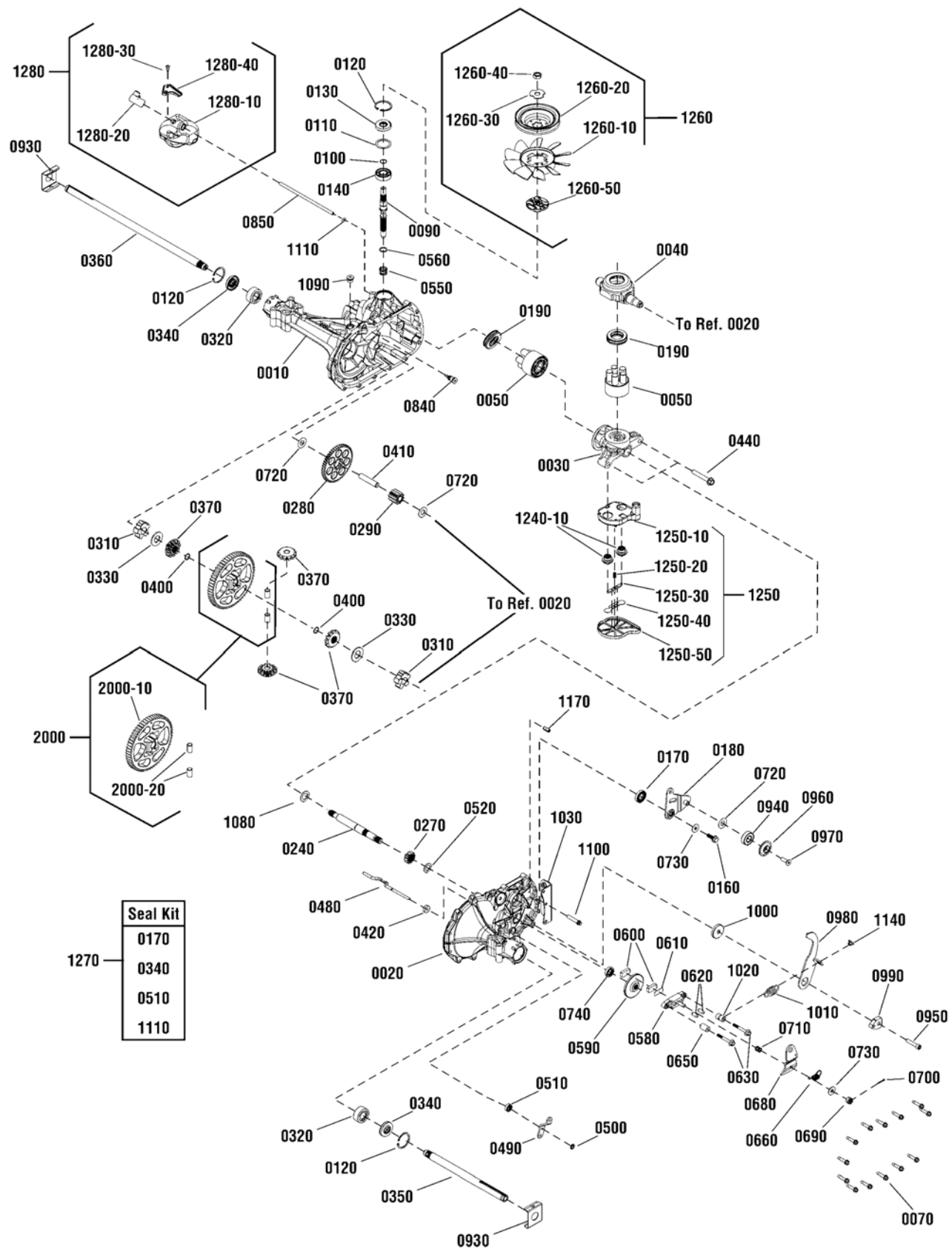


| <b>Item</b> | <b>Part No</b> | <b>Qty</b> | <b>Description</b>                                |
|-------------|----------------|------------|---|
| 0010        | 885528YP       | 1          | * TRANSMISSION, Hydro Gear, 610                   |
| 0020        | 1923141SM      | 8          | SCREW, Hex Head Flange Lock, 5/16-18 x 2-3/4, G5  |
| 0030        | 1931277SM      | 8          | NUT, Hex Flange, Whiz Lock, 5/16-18               |
| 0040        | 885436YP       | 1          | LEVER, Roll Release                               |
| 0050        | 1722460SM      | 5          | PIN, Quick  |
| 0060        | 885495YP       | 1          | BELT, Secondary (81.37" EL, HA section)           |
| 0080        | 165X75MA       | 1          | SPRING, Extension                                 |
| 0090        | 885868BMYP     | 1          | BRACKET, Roll Release                             |
| 0110        | 885645YP       | 3          | PULLEY, Idler                                     |
| 0120        | 1931352SM      | 3          | BOLT, Carriage, Short Neck, 3/8-16 x 1-1/2, G5    |
| 0130        | 015X84MA       | 3          | NUT, Hex Flange, Centerlock, 3/8-16               |
| 0140        | 885476YP       | 1          | SPEED CONTROL, Short Link                         |
| 0150        | 885477AYP      | 1          | SPEED CONTROL ASSEMBLY                            |
| 0160        | 017X91MA       | 2          | WASHER, Flat, 13/16                               |
| 0170        | 1960074SM      | 1          | PIN, Cotter                                       |
| 0180        | 021920ZMA      | 1          | NUT, Adjusting                                    |
| 0190        | 017X53MA       | 1          | WASHER, Flat, .41                                 |
| 0200        | 885480AYP      | 1          | LINK, Speed Control                               |
| 0210        | 885409AYP      | 1          | BRACKET, Idler, Rear                              |
| 0220        | 1727935SM      | 1          | SPACER, Pivot                                     |
| 0230        | 1931335SM      | 1          | BOLT, Carriage, Short Neck, 5/16-18 x 1, G5       |
| 0240        | 1931277SM      | 2          | NUT, Hex Flange, Whiz Lock, 5/16-18               |
| 0250        | 885077YP       | 1          | BELT GUIDE  |
| 0260        | 1731939SM      | 1          | SPRING, Extension                                 |
| 0290        | 885953BMYP     | 1          | PLATE, Front Fixed Idler                          |
| 0300        | 703228         | 4          | CAPSCREW, Hex Washer Head, Taptite, 5/16-18 x 3/4 |
| 0330        | 703228         | 2          | CAPSCREW, Hex Washer Head, Taptite, 5/16-18 x 3/4 |
| 0340        | 165X92MA       | 1          | SPRING, Extension                                 |

**Footnotes:**

Note\* See your local authorized dealership for parts and warranty or contact Hydro Gear at [www.hydro-gear.com/Support/NorthAmerica.aspx](http://www.hydro-gear.com/Support/NorthAmerica.aspx) (U.S. 1-877-728-7410 Int'l 32 (0) 12 670 631)

# Transmission SERVICE PARTS - Hydro Gear 324-0610



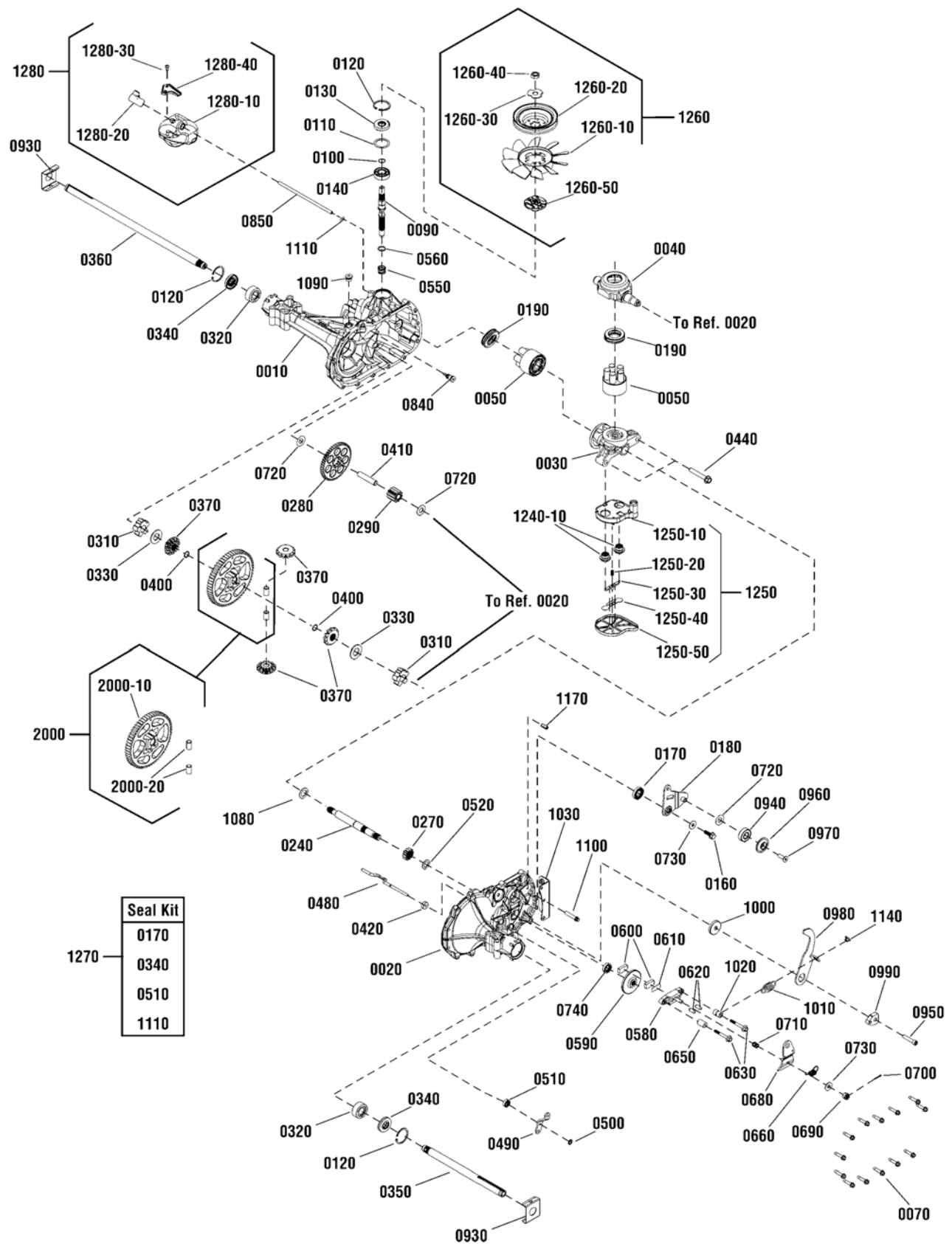
## Transmission SERVICE PARTS - Hydro Gear 324-0610

| Item | Part No | Qty | Description   |
|------|---------|-----|---|
| 0010 | ----    | 1   | * MAIN HOUSING ASSEMBLY   |
| 0020 | ----    | 1   | * SIDE HOUSING ASSEMBLY   |
| 0030 | ----    | 1   | * CENTERSECTION ASSEMBLY  |
| 0040 | ----    | 1   | * TRUNNION, Swashplate  |
| 0050 | ----    | 2   | * BLOCK ASSEMBLY  |
| 0060 | ----    | 1   | * SEALANT, 10.1 oz. (Not Illustrated)                                     |
| 0070 | ----    | 14  | * SCREW, Hex Washer, 1/4-20 x 1-1/8                                       |
| 0090 | 1752461 | 1   | SHAFT, Input  |
| 0100 | 1715270 | 1   | RING, Retaining   |
| 0110 | 1752462 | 1   | WASHER, Flat, 1.23 x 1.57 x .04   |
| 0120 | 1752463 | 3   | RING, RETAINING   |
| 0130 | 1752464 | 1   | SEAL, LIP 17 x 40 x 12  |
| 0140 | 1752465 | 1   | BEARING, BALL 17 x 40 x 12  |
| 0160 | ----    | 1   | * SCREW, Hex Flange, With Patch, 5/16-24 x 15/16                          |
| 0170 | ----    | 1   | * SEAL, Lip, 18 x 32 x 7 (Not a servicable part, order kit # 1270)        |
| 0180 | ----    | 1   | * ARM, Control  |
| 0190 | 1715144 | 2   | * BEARING, Thrust, 30 x 52 x 13   |
| 0240 | ----    | 1   | * SHAFT, Motor  |
| 0270 | ----    | 1   | * GEAR, Pinion, 12T   |
| 0280 | ----    | 1   | * GEAR, 10T/49T   |
| 0290 | ----    | 1   | * GEAR, Jackshaft, 10T  |
| 0310 | ----    | 2   | * BUSHING, Sleeve (Inboard)   |
| 0320 | ----    | 2   | * BUSHING, Sleeve, 3/4 x 1-1.571 x 5/8                                    |
| 0330 | ----    | 2   | * WASHER, Flat, 3/4 x 1-1/2 x 7/64  |
| 0340 | ----    | 2   | * SEAL, Lip, 3/4 x 1.577 x 1/4 (Not a servicable part, order kit # 1270)  |
| 0350 | ----    | 1   | * SHAFT, Axle, 3/4 x 11.39 (Key, RH)                                      |
| 0360 | ----    | 1   | * SHAFT, AXLE, 3/4 x 16.99 (Key, LH)                                      |
| 0370 | ----    | 1   | * KIT, Miter Gear   |
| 0400 | ----    | 2   | * RING, Retaining Spiral  |
| 0410 | ----    | 1   | * PIN, Jackshaft, 1/2 x 2.43  |
| 0420 | ----    | 1   | * MAGNET, Ring  |
| 0440 | 1717965 | 2   | SCREW, Hex Flange, 3/8-24 x 2-1/2   |
| 0480 | ----    | 1   | * ROD, Actuator Bypass  |
| 0490 | ----    | 1   | * ARM, Bypass   |
| 0500 | ----    | 1   | * RING, Retaining, External, 1/4  |
| 0510 | ----    | 1   | * SEAL, Lip, 1/4 x 3/4 x 1/4 TC (Not a servicable part, order kit # 1270) |
| 0520 | ----    | 1   | * WASHER, Flat, 5/8 x 1 x 1/2   |
| 0530 | ----    | 1   | * RING, Retaining   |
| 0540 | ----    | 1   | * BUSHING, Center Block   |
| 0550 | ----    | 1   | * SPRING, Block   |
| 0560 | ----    | 1   | * WASHER, Thrust, .59 x .79 x .04   |
| 0580 | ----    | 1   | * BRAKE YOKE KIT  |
| 0590 | ----    | 1   | * DISK, Brake   |
| 0600 | ----    | 2   | * PUCK, Brake   |

### Footnotes:

Note\* See your local authorized dealership for parts and warranty or contact Hydro Gear at [www.hydro-gear.com/Support/NorthAmerica.aspx](http://www.hydro-gear.com/Support/NorthAmerica.aspx) (U.S. 1-877-728-7410 Int'l 32 (0) 12 670 631)

# Transmission SERVICE PARTS - Hydro Gear 324-0610





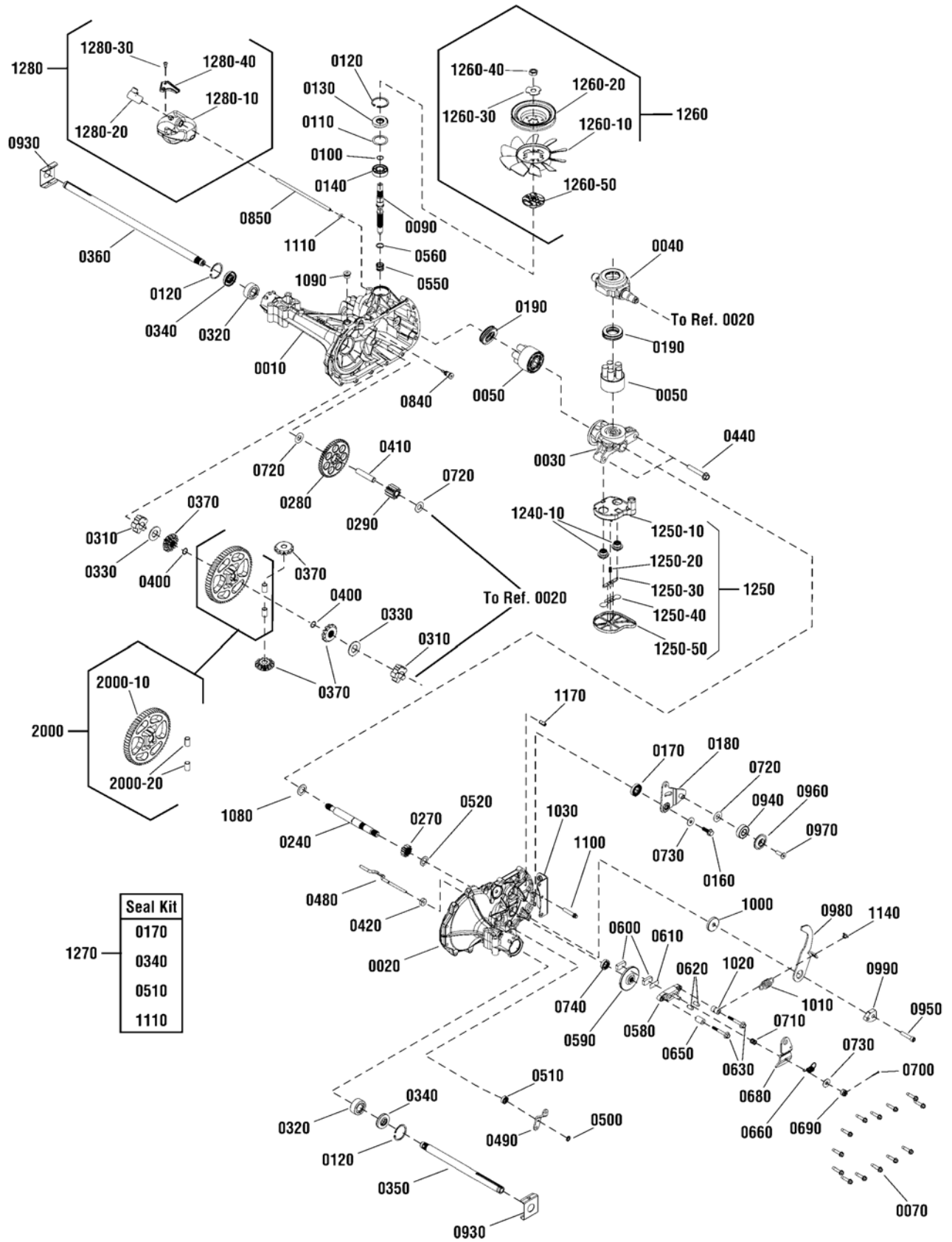
## Transmission SERVICE PARTS - Hydro Gear 324-0610

| Item    | Part No | Qty | Description  |
|---------|---------|-----|--|
| 0610    | ----    | 1   | * PLATE, Puck  |
| 0620    | ----    | 2   | * PIN, Brake Actuating   |
| 0630    | ----    | 2   | * SCREW, Hex Head, With Patch, 1/4-20 x 2  |
| 0650    | 1715199 | 1   | SPACER, .26 x .57 x .87  |
| 0660    | ----    | 1   | * SPRING, Brake arm Bias   |
| 0670    | 1706160 | 1   | SCREW, Square Head, Ribbed, 5/16-24  |
| 0680    | ----    | 1   | * ARM, Brake   |
| 0690    | ----    | 1   | * NUT, Castle, 5/16-24   |
| 0700    | ----    | 1   | * PIN, Cotter, 3/32 x 3/4  |
| 0710    | ----    | 1   | * SPRING, Compression Brake, Anti-Drag   |
| 0720    | ----    | 3   | * WASHER, Flat, .51 x 1.0 x .03  |
| 0730    | ----    | 2   | * WASHER, Flat, .34 x .88 x .06  |
| 0740    | ----    | 1   | * KIT, Seal  |
| 0840    | ----    | 1   | * FITTING, 5/16 SAE 5/32 TUBE  |
| 0850    | ----    | 1   | * HOSE, Expansion Tank, 7.56 In.   |
| 0930    | 1752466 | 2   | SPRING CLIP, Housing Thrust (3/4" Axle)  |
| 0940    | ----    | 1   | * BEARING, Ball, .62 x 1.38 x .44  |
| 0950    | ----    | 1   | * CAPSCREW, Socket Head, 5/16-24 x 1-1/2   |
| 0960    | ----    | 1   | * SPACER, Locating   |
| 0970    | ----    | 1   | * SCREW, Countersunk, 5/16-18 x 1  |
| 0980    | ----    | 1   | * ARM, Return  |
| 0990    | ----    | 1   | * PUCK, Adjusting  |
| 1000    | ----    | 1   | * WASHER, Flat, .32 x 1.60 x .24   |
| 1010    | ----    | 1   | * SPRING, Extension, Double Loop   |
| 1020    | ----    | 1   | * SPACER, .26 x .56 x .87  |
| 1030    | ----    | 1   | * BRACKET, Torque  |
| 1080    | ----    | 1   | * WASHER, Flat, .71 x 1.16 x .04   |
| 1090    | ----    | 1   | * PLUG, 9/16-18 (METAL)  |
| 1100    | ----    | 1   | * SCREW, Torx Head, 5/16-18 x 1-1/2  |
| 1110    | ----    | 1   | * O-RING, .299 x .505 x .103 (Not a serviceable part, order kit # 1270)                              |
| 1140    | ----    | 1   | * SPRING, Guide  |
| 1170    | ----    | 1   | * PIN, Spring, .304 x .75  |
| 1240    | ----    | 1   | * CENTERSECTION ASSEMBLY, Filter, Bypass (Not Illustrated) (Includes Ref. Nos. 0030, 1240-10 & 1250) |
| 1240-10 | ----    | 1   | * CENTERSECTION (5-Piston) (Not a serviceable part, order kit #1240)                                 |
| 1250    | ----    | 1   | * FILTER ASSEMBLY (Includes Ref. Nos. 1250-10, 1250-20, 1250-30, 1250-40 & 1250-50)                  |
| 1250-10 | ----    | 1   | * BASE, Filter, With Poppet (Not a serviceable part, order kit #1250)                                |
| 1250-20 | ----    | 1   | * SPRING, Bypass, 1/2" (Not a serviceable part, order kit #1250)                                     |
| 1250-30 | ----    | 1   | * ACTUATOR, Bypass (Not a serviceable part, order kit #1250)   |
| 1250-40 | ----    | 1   | * DEFLECTOR (Not a serviceable part, order kit #1250)  |
| 1250-50 | ----    | 1   | * BOTTOM, Filter (Not a serviceable part, order kit #1250)   |
| 1260    | 1752467 | 1   | FAN & PULLEY KIT (Includes Ref. Nos. 1260-10, 1260-20, 1260-30, 1260-40 & 1260-50)                   |
| 1260-10 | ----    | 1   | * FAN, 7" (10 BLADE) (Not a serviceable part, order kit #1260)                                       |
| 1260-20 | ----    | 1   | * PULLEY, Cupped, 4-1/2" (Not a serviceable part, order kit #1260)                                   |

### Footnotes:

Note\* See your local authorized dealership for parts and warranty or contact Hydro Gear at [www.hydro-gear.com/Support/NorthAmerica.aspx](http://www.hydro-gear.com/Support/NorthAmerica.aspx) (U.S. 1-877-728-7410 Int'l 32 (0) 12 670 631)

**Transmission SERVICE PARTS - Hydro Gear 324-0610**



## Transmission SERVICE PARTS - Hydro Gear 324-0610

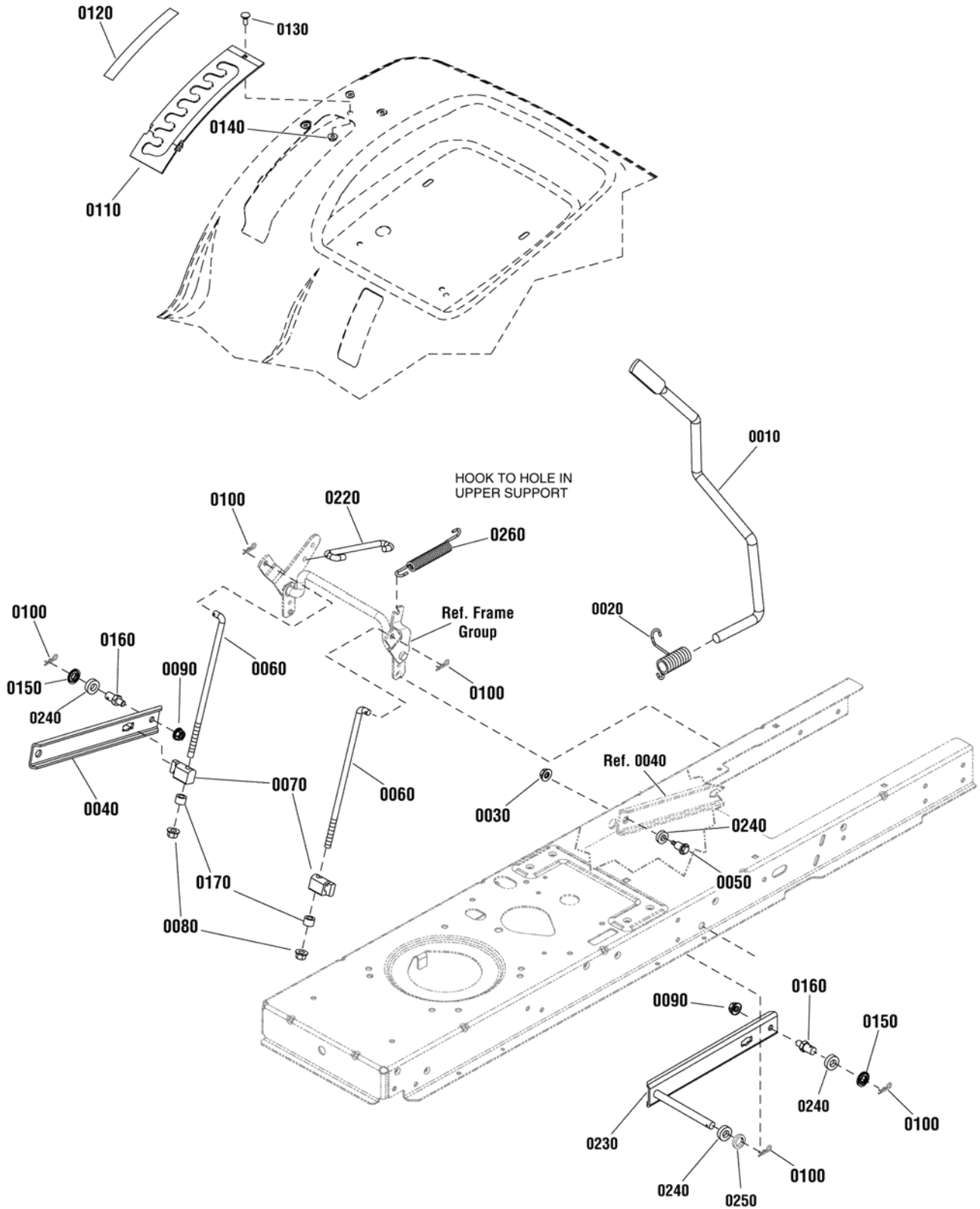
---

| Item    | Part No | Qty | Description   |
|---------|---------|-----|---|
| 1260-30 | -----   | 1   | * NUT, Hex Jam, With Patch, 1/2-20 (Not a serviceable part, order kit #1260)  |
| 1260-40 | -----   | 1   | * WASHER, Slotted, .53 x 1.63 x .06 (Not a serviceable part, order kit #1260) |
| 1260-50 | -----   | 1   | * HUB, Pulley (Not a serviceable part, order kit #1260)                       |
| 1270    | 1752468 | 1   | SEAL & O-RING KIT (Includes Ref. Nos. 0170, 0340, 0510 & 1110)                |
| 1280    | 1752469 | 1   | EXPANSION TANK KIT (Includes Ref. Nos. 1280-10, 1280-20, 1280-30 & 1280-40)   |
| 1280-10 | -----   | 1   | * TANK, Expansion (Not a serviceable part, order kit #1280)                   |
| 1280-20 | -----   | 1   | * CAP, Expansion Tank (Not a serviceable part, order kit #1280)               |
| 1280-30 | -----   | 1   | * BOLT, Self Tapping, 10-32 x 1/2 (Not a serviceable part, order kit #1280)   |
| 1280-40 | -----   | 1   | * BRACKET, Expansion Tank (Not a serviceable part, order kit #1280)           |
| 2000    | -----   | 1   | * KIT, 60T Bull Gear Diff Pins (Includes Ref. Nos. 2000-10 & 2000-20)         |
| 2000-10 | -----   | 1   | * GEAR, 60T   |
| 2000-20 | -----   | 2   | * PIN, 1/2  |

### Footnotes:

Note\* See your local authorized dealership for parts and warranty or contact Hydro Gear at [www.hydro-gear.com/Support/NorthAmerica.aspx](http://www.hydro-gear.com/Support/NorthAmerica.aspx) (U.S. 1-877-728-7410 Int'l 32 (0) 12 670 631)

# Lift Group

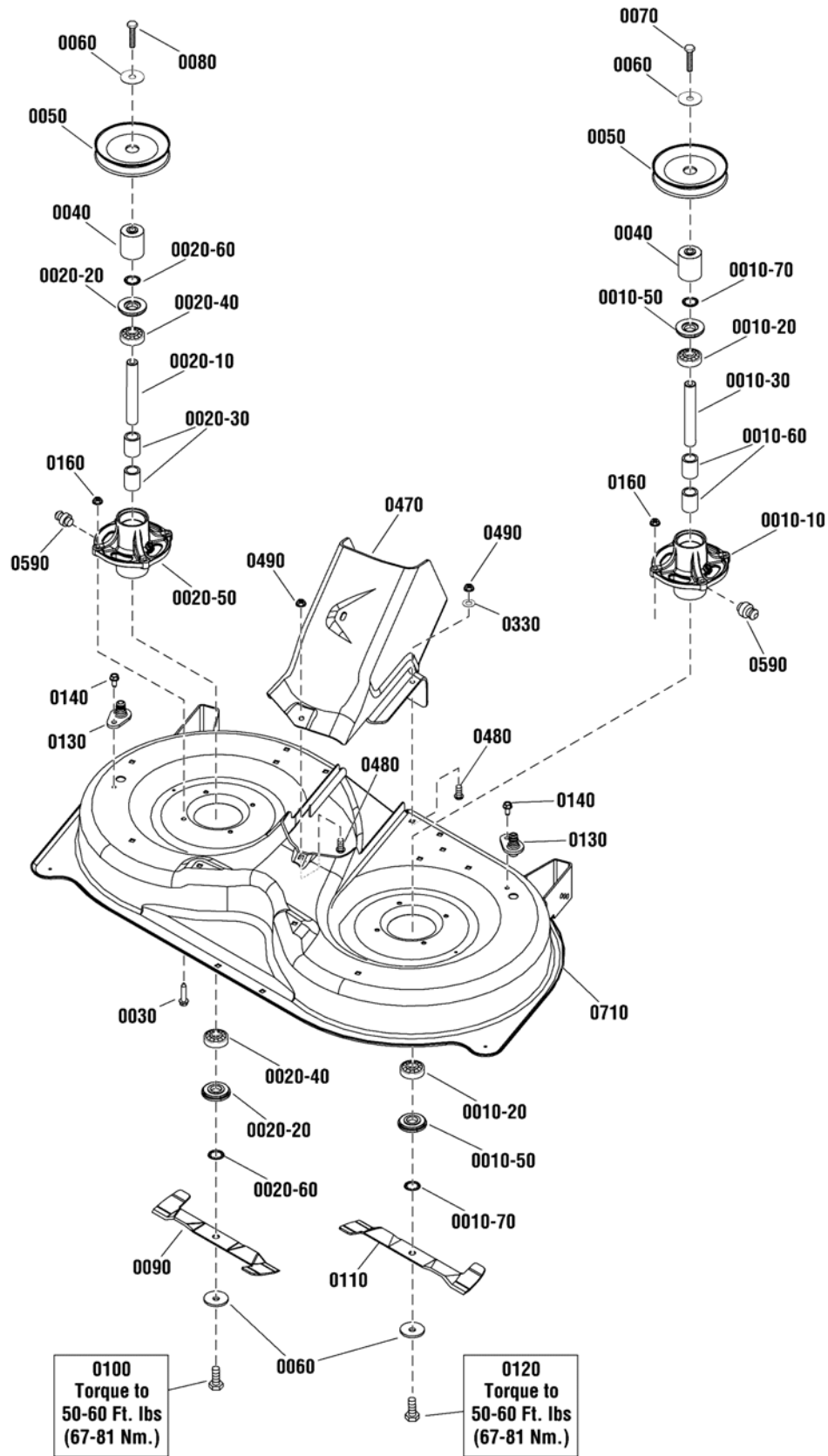


---

| <b>Item</b> | <b>Part No</b> | <b>Qty</b> | <b>Description</b>                 |
|-------------|----------------|------------|------------------------------------|
| 0010        | 1728070        | 1          | ROD, Lift Handle, 17.7"            |
| 0020        | 1729652        | 1          | SPRING, Torsion, 2.12 Inch         |
| 0030        | 1931277        | 1          | NUT, Hex, Flange Whizlock, 5/16-18 |
| 0040        | 1731417BM      | 1          | ARM, Rear Lift, RH                 |
| 0050        | 1732426        | 1          | BOLT, Shoulder                     |
| 0060        | 1727955        | 2          | ROD, Lower Life, 10.00 LG          |
| 0070        | 1731894        | 2          | TRUNNION                           |
| 0080        | 1960687        | 2          | NUT, Hex Flange, 3/8-16 ESNA       |
| 0090        | 1931211        | 2          | NUT, Hex, Flange Lock, 3/8-16      |
| 0100        | 1960074        | 5          | CLIP, Spring                       |
| 0110        | 1727985A       | 1          | QUADRANT, Lift Height              |
| 0120        | 1730264        | 1          | DECAL, Height Of Cut               |
| 0130        | 1960252        | 1          | BOLT, Carriage, 1/4-20 x 5/8 G5    |
| 0140        | 1930641        | 1          | NUT, Hex Flange Whiz, 1/4-20       |
| 0150        | 1960170        | 2          | WASHER, 1/2                        |
| 0160        | 721221         | 2          | PIN, Threaded Shoulder             |
| 0170        | 1666294        | 2          | SPACER                             |
| 0220        | 1727954        | 1          | ROD, Lift, 5.43 LG                 |
| 0230        | 885523BM       | 1          | ARM, Rear Lift, LH                 |
| 0240        | 885382         | 4          | WASHER, Rubber                     |
| 0250        | 720173         | 1          | WASHER, Flat, .81                  |
| 0260        | 722453         | 1          | SPRING, Extension                  |

**Footnotes:**

# 96cm Mower Deck - Housing, Arbors & Blade

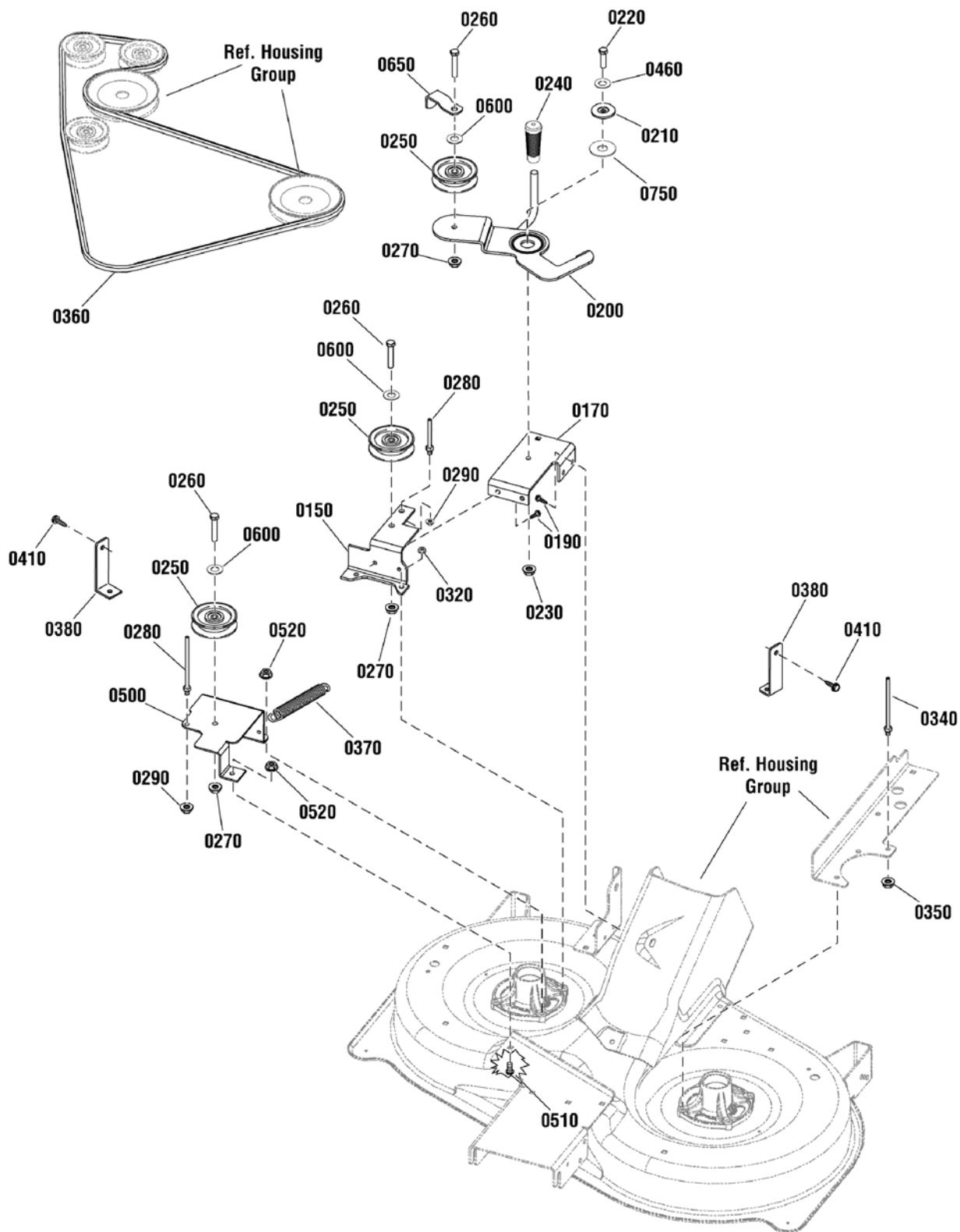


## 96cm Mower Deck - Housing, Arbors & Blade

| Item    | Part No  | Qty | Description   |
|---------|----------|-----|---|
| 0010-10 | 1735573  | 2   | HOUSING, Spindle                                    |
| 0010-20 | 1735399  | 4   | BEARING, Ball, 20mm                                 |
| 0010-30 | 1735326  | 1   | SHAFT, Spindle, LH                                  |
| 0010-50 | 1735323  | 4   | SHIELD, Arbor                                       |
| 0010-60 | 1735328  | 4   | SPACER, Bearing                                     |
| 0010-70 | 1960766  | 4   | RING, Self Locking                                  |
| 0020-10 | 885420   | 1   | SHAFT, Spindle, RH (LH Thread)                      |
| 0020-20 | 1735323  | 4   | SHIELD, Arbor                                       |
| 0020-30 | 1735328  | 4   | SPACER, Bearing                                     |
| 0020-40 | 1735399  | 4   | BEARING, Ball, 20mm                                 |
| 0020-50 | 1735573  | 2   | HOUSING, Spindle                                    |
| 0020-60 | 1960766  | 4   | RING, Self Locking                                  |
| 0030    | 1930600  | 8   | CAPSCREW, Hex Washer Head, Taptite, 5/16-18 x 1-1/2 |
| 0040    | 1750338  | 2   | SPACER, Mower Drive                                 |
| 0050    | 1737835  | 2   | PULLEY, Deep Groove                                 |
| 0060    | 1656916  | 4   | WASHER, Spring, 0.475ID x 1-3/4 OD                  |
| 0070    | 1926110  | 1   | CAPSCREW, Hex Head, 7/16-14 x 2-3/4, G5             |
| 0080    | 885456   | 1   | CAPSCREW, Socket Head, 7/16-14 x 2-3/4, LH          |
| 0090    | 885418BM | 1   | BLADE, RH, 19.5"                                    |
| 0100    | 885455   | 1   | CAPSCREW, Socket Head, 7/16-14 x 1, LH              |
| 0110    | 885419BM | 1   | BLADE, LH, 19.5"                                    |
| 0120    | 1920676  | 1   | CAPSCREW, Hex Head, 7/16-14 x 1, G5                 |
| 0130    | 1735716  | 2   | ADAPTER, Washout Port                               |
| 0140    | 1664847  | 2   | CAPSCREW, Hex Washer Head, Taptite, 5/16-18 x 3/4   |
| 0160    | 1931277  | 6   | NUT, Hex Flange, Whiz Lock, 5/16-18                 |
| 0330    | 1919326  | 3   | WASHER, 5/16  |
| 0470    | 885460   | 1   | DECK, CENTER CAP                                    |
| 0480    | 1931333  | 3   | BOLT, Carriage, Short Neck, 5/16-18 x 3/4, G5       |
| 0490    | 1931277  | 3   | NUT, Hex Flange, Whiz Lock, 5/16-18                 |
| 0590    | 1704314  | 2   | FITTING, Grease                                     |
| 0710    | 885557BM | 1   | DECK ASSEMBLY                                       |

### Footnotes:

# 96cm Mower Deck - Clutch Group



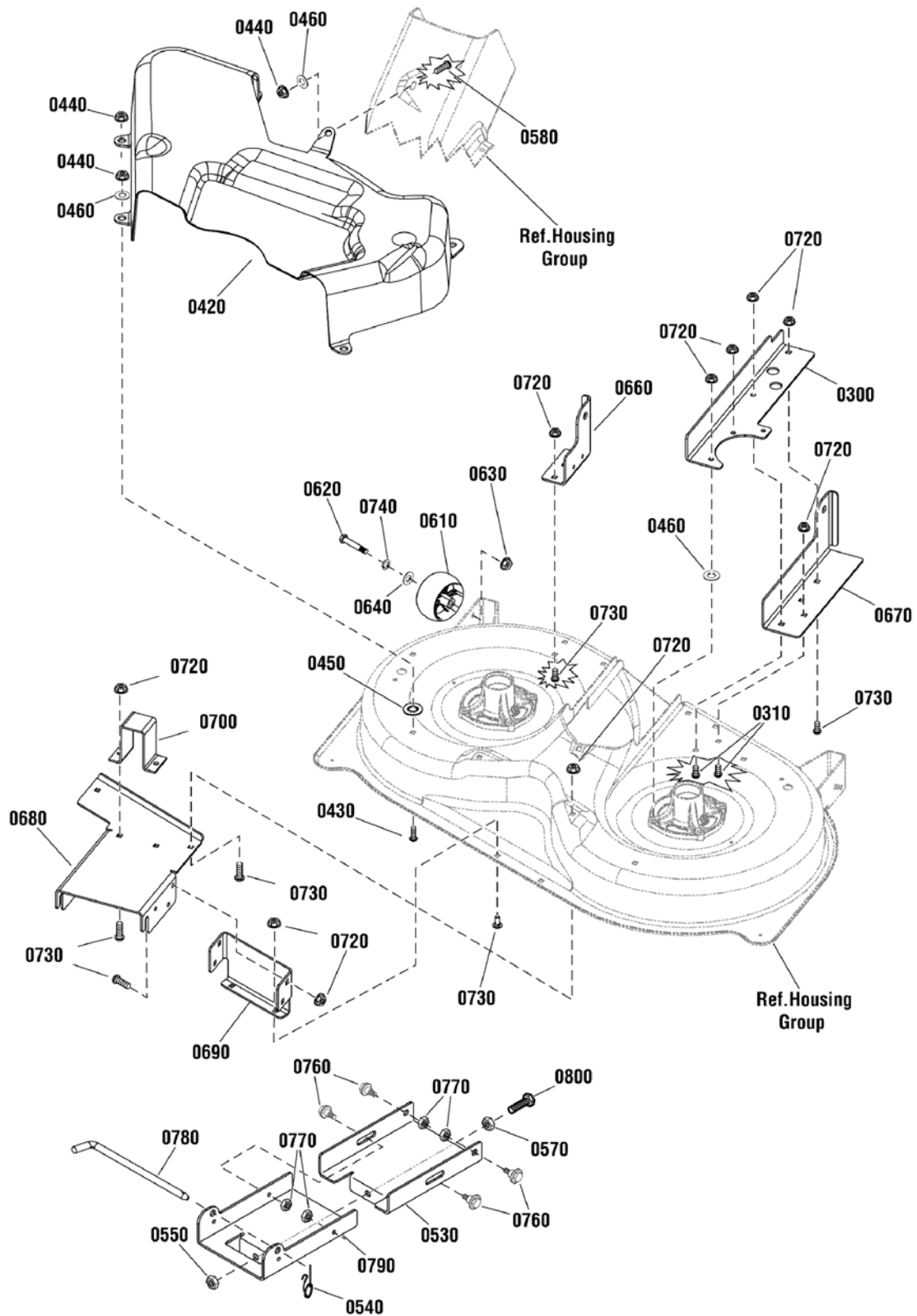


## 96cm Mower Deck - Clutch Group

| Item | Part No   | Qty | Description                                       |
|------|-----------|-----|---|
| 0150 | 885481BM  | 1   | BRACKET, Idler, RH                                |
| 0170 | 885516BM  | 1   | SUPPORT, Idler Arm                                |
| 0190 | 1664847   | 4   | CAPSCREW, Hex Washer Head, Taptite, 5/16-18 x 3/4 |
| 0200 | 885559BM  | 1   | DECK IDLER ASSEMBLY                               |
| 0210 | 1727935   | 1   | SPACER, Pivot, 0.330ID 1.76OD                     |
| 0220 | 1921333   | 1   | CAPSCREW, Hex Head, 5/16-18 x 1, G5               |
| 0230 | 720145    | 1   | NUT, Hex Flange, Center Lock, 5/16-18             |
| 0240 | 721120    | 1   | GRIP  |
| 0250 | 885482    | 3   | PULLEY, Deck Idler                                |
| 0260 | 1923701   | 3   | CAPSCREW, Hex Head, 3/8-16 x 2, G5                |
| 0270 | 1931211   | 3   | NUT, Hex Flange, Whiz Lock, 3/8-16                |
| 0280 | 885534    | 2   | BELT GUIDE  |
| 0290 | 1931277   | 2   | NUT, Hex Flange, Whiz Lock, 5/16-18               |
| 0320 | 1931277   | 2   | NUT, Hex Flange, Whiz Lock, 5/16-18               |
| 0340 | 721974    | 1   | BELT GUIDE, Long                                  |
| 0350 | 1931277   | 1   | NUT, Hex Flange, Whiz Lock, 5/16-18               |
| 0360 | 885483    | 1   | BELT, Deck (91.35" EL, HAA section)               |
| 0370 | 1715435   | 1   | SPRING, Extension, 1                              |
| 0380 | 885527BM  | 2   | UPSTOP  |
| 0410 | 1664847   | 4   | CAPSCREW, Hex Washer Head, 5/16-18 x 3/4          |
| 0460 | 1919326   | 1   | WASHER, 5/16                                      |
| 0500 | 885556BM  | 1   | BRACKET, Idler, Fixed                             |
| 0510 | 1921333   | 1   | CAPSCREW, Hex Head, 5/16-18 x 1, G5               |
| 0520 | 1931277   | 3   | NUT, Hex Flange, Whiz Lock, 5/16-18               |
| 0600 | 1922755   | 3   | WASHER, Flat, 3/8                                 |
| 0650 | 1677135BM | 1   | GUARD, Spring                                     |
| 0750 | 885649    | 1   | SHIM  |

### Footnotes:

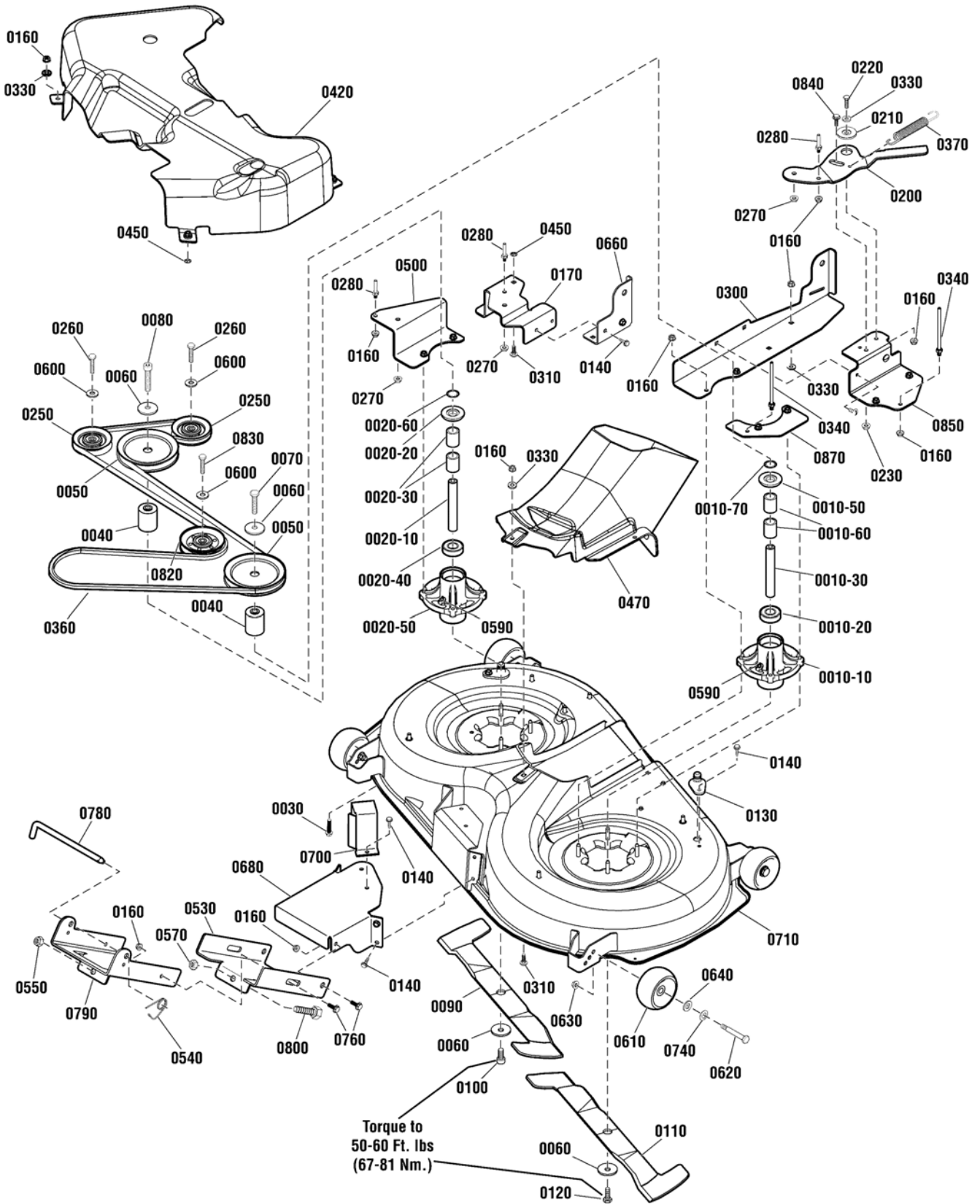
# 96cm Mower Deck - Support Group



| <b>Item</b> | <b>Part No</b> | <b>Qty</b> | <b>Description</b>                                   |
|-------------|----------------|------------|--|
| 0300        | 885526BM       | 1          | BRACKET, Rear Lift, LH                               |
| 0310        | 1931333        | 2          | BOLT, Carriage, Short Square Neck, 5/16-18 x 3/4, G5 |
| 0420        | 885543         | 1          | COVER, Pulley  |
| 0430        | 1931333        | 5          | BOLT, Carriage, Short Neck, 5/16-18 x 3/4, G5        |
| 0440        | 1931277        | 6          | NUT, Hex Flange, Whiz Lock, 5/16-18                  |
| 0450        | 5025498        | 6          | NUT, Push On, 5/16                                   |
| 0460        | 1919326        | 6          | WASHER, 5/16   |
| 0530        | 885734BM       | 1          | BRACKET, Front Connector                             |
| 0540        | 2176012        | 1          | RETAINER, Pin Spring                                 |
| 0550        | 1960379        | 1          | NUT, Hex Lock, ESNA LIGHT, 1/2-13                    |
| 0570        | 1913744        | 1          | NUT, Hex Jam, 1/2-13                                 |
| 0580        | 720049         | 1          | BOLT, Carriage, 5/16-18 x 5/8                        |
| 0610        | 1714760        | 2          | WHEEL, Gauge   |
| 0620        | 2108765        | 2          | BOLT, 3/8-16 x 2-3/4                                 |
| 0630        | 1960687        | 2          | NUT, Hex Flange, ESNA, 3/8-16                        |
| 0640        | 1960170        | 2          | WASHER, 1/2  |
| 0660        | 885462BM       | 1          | BRACKET, Deck, Rear                                  |
| 0670        | 885463BM       | 1          | BRACKET, Rear Lift, LH                               |
| 0680        | 885738BM       | 1          | SUPPORT, Deck Front                                  |
| 0690        | 885740BM       | 1          | BRACKET, Front Support                               |
| 0700        | 885519BM       | 1          | BRACKET, Front Upstop                                |
| 0720        | 1931277        | 14         | NUT, Hex Flange, Whiz Lock, 5/16-18                  |
| 0730        | 1931333        | 14         | BOLT, Carriage, Short Neck, 5/16-18 x 3/4, G5        |
| 0740        | 720035         | 2          | WASHER, Spring, .30" ID                              |
| 0760        | 1732426        | 4          | BOLT, Shoulder, 5/16-18 x .13/16, 1/2" Thread Length |
| 0770        | 1931277        | 4          | NUT, Hex Flange, Whiz Lock, 5/16-18                  |
| 0780        | 1731414        | 1          | ROD, Latch   |
| 0790        | 885699BM       | 1          | BRACKET, Front Hanger                                |
| 0800        | 885710         | 1          | BOLT, 1/2 x 3  |

**Footnotes:**

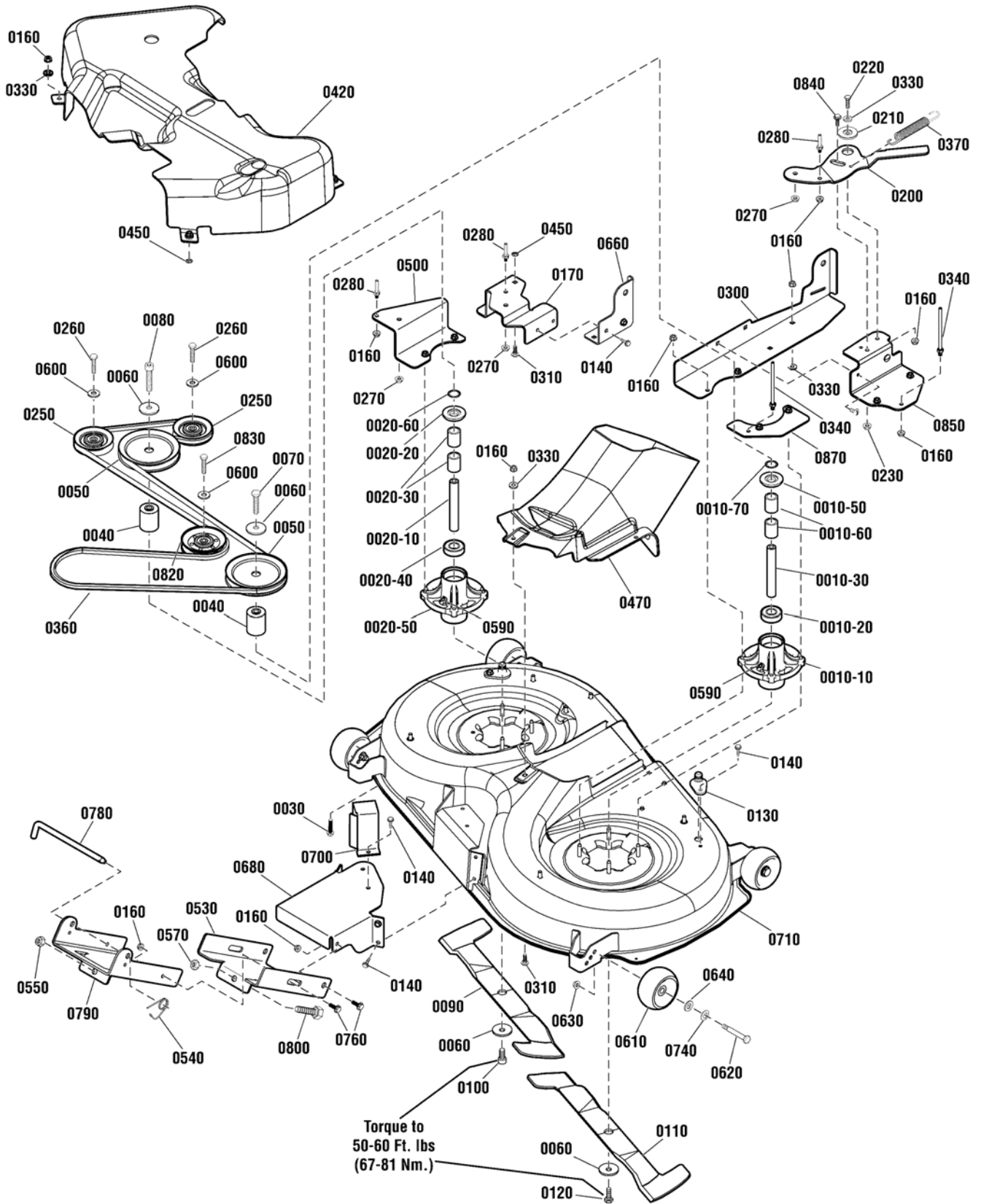
# 107cm Mower Deck



| Item    | Part No    | Qty | Description                                      |
|---------|------------|-----|--|
| 0010-10 | 1735573YP  | 1   | HOUSING, Spindle                                 |
| 0010-20 | 1735399YP  | 2   | BEARING, Ball                                    |
| 0010-30 | 1735326YP  | 1   | SHAFT, Spindle                                   |
| 0010-50 | 1735323YP  | 2   | SHIELD, Arbor                                    |
| 0010-60 | 1735328YP  | 2   | SPACER, Bearing                                  |
| 0010-70 | 1960766YP  | 2   | RING, Self Lock                                  |
| 0020-10 | 885420YP   | 1   | SHAFT, Spindle, RH (LH Thread)                   |
| 0020-20 | 1735323YP  | 2   | SHIELD, Arbor                                    |
| 0020-30 | 1735328YP  | 2   | SPACER, Bearing                                  |
| 0020-40 | 1735399YP  | 2   | BEARING, Ball                                    |
| 0020-50 | 1735573YP  | 1   | HOUSING, Spindle                                 |
| 0020-60 | 1960766YP  | 2   | RING, Self Lock                                  |
| 0030    | 1930600SM  | 8   | SCREW, Hex Washer Head, Taptite, 5/16-18 x 1-1/2 |
| 0040    | 1750338YP  | 2   | SPACER, Mower Drive                              |
| 0050    | 1737835YP  | 2   | PULLEY, V, Deep Groove                           |
| 0060    | 1656916SM  | 4   | WASHER, Spring, 0.475                            |
| 0070    | 1926110SM  | 1   | CAPSCREW, Hex Head, 7/16-14 x 2-3/4, GR5         |
| 0080    | 885456YP   | 1   | CAPSCREW, Socket Head, 7/16-14 x 2-3/4           |
| 0090    | 885715BMYP | 1   | BLADE, RH, 21"                                   |
| 0100    | 885455YP   | 1   | CAPSCREW, Socket Head, 7/16-14 x 1               |
| 0110    | 885716BMYP | 1   | BLADE, LH, 21"                                   |
| 0120    | 1920676SM  | 1   | CAPSCREW, Hex Head, 7/16-14 x 1, GR5             |
| 0130    | 1735716YP  | 2   | ADAPTER, Washout Port                            |
| 0140    | 703228     | 6   | SCREW, Thread Roll, 5/16-18 x 3/4                |
| 0160    | 1931277SM  | 40  | NUT, Flange, 5/16-18, GR5                        |
| 0170    | 885723BMYP | 1   | SUPPORT, Idler Arm                               |
| 0200    | 885848BMYP | 1   | IDLER ARM  |
| 0210    | 1727935SM  | 1   | SPACER, Pivot, 5/16 ID x 1-3/4 OD                |
| 0220    | 001X84MA   | 1   | CAPSCREW, Hex Head, 5/16-18 x 1, GR5             |
| 0230    | 015X88MA   | 1   | NUT, Hex Flange, Center Lock, 5/16-18            |
| 0250    | 885482YP   | 2   | PULLEY, Deck Idler                               |
| 0260    | 1923701SM  | 2   | CAPSCREW, Hex Head, 3/8-16 x 2, GR5              |
| 0270    | 703333     | 3   | NUT, Hex Flange, 3/8-16                          |
| 0280    | 885534YP   | 2   | BELT GUIDE                                       |
| 0300    | 885724BMYP | 1   | BRACKET, Deck, Rear Lift, LH                     |
| 0310    | 703185     | 15  | BOLT, Carriage, 5/16-18 x 3/4, GR5               |
| 0330    | 1919326SM  | 10  | WASHER, Flat, 5/16                               |
| 0340    | 1401105MA  | 1   | BELT GUIDE, LONG                                 |
| 0360    | 885714YP   | 1   | BELT, 112.48" EL, HAA Section                    |
| 0370    | 1715435SM  | 1   | SPRING, Extension                                |
| 0420    | 885730YP   | 1   | COVER, Pulley                                    |
| 0450    | 703297     | 6   | RETAINER, 5/16, GR5                              |
| 0470    | 885719YP   | 1   | CENTER CAP                                       |
| 0500    | 885845BMYP | 1   | BRACKET, Idler, Fixed                            |

**Footnotes:**

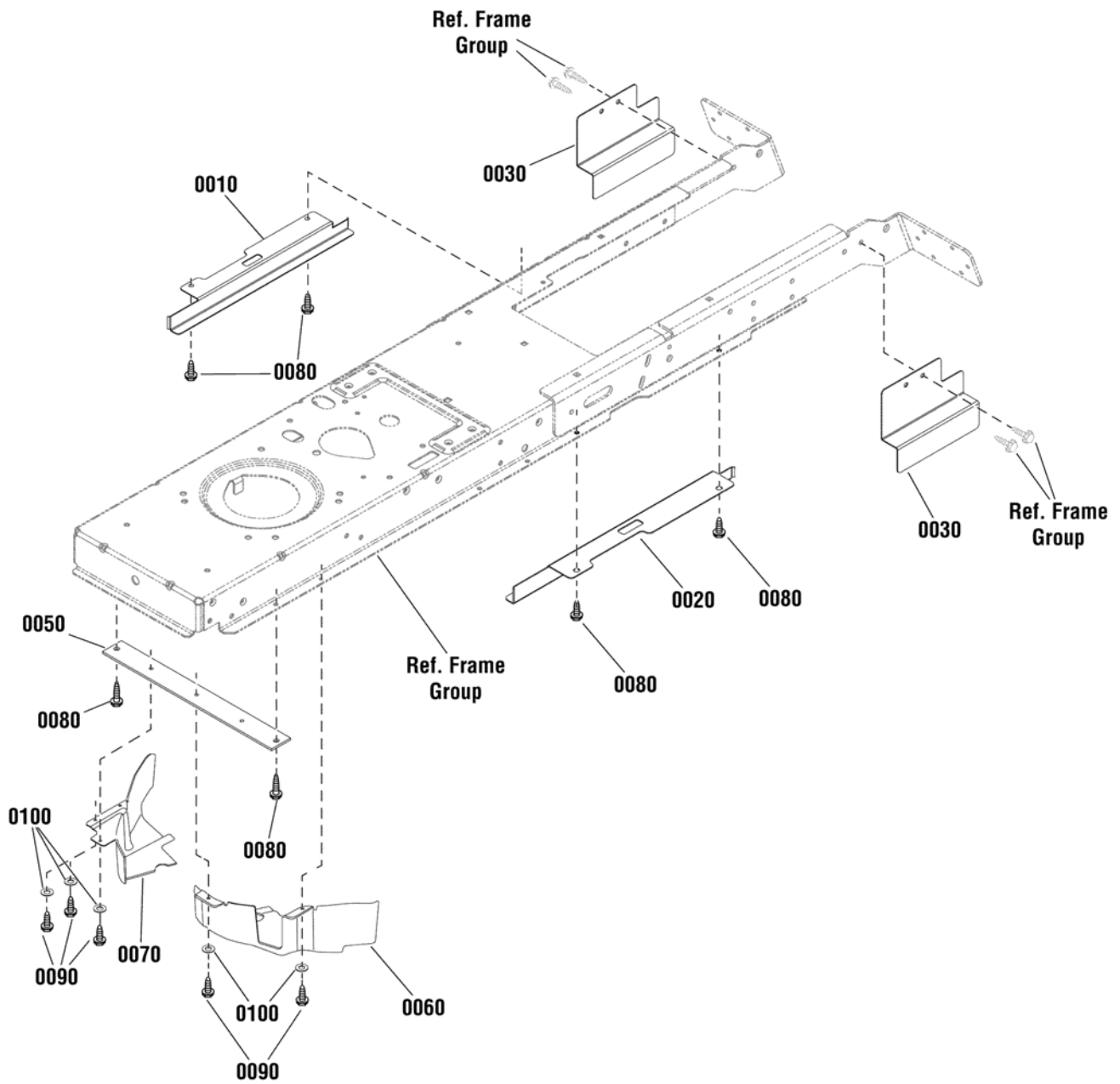
# 107cm Mower Deck



---

| <b>Item</b> | <b>Part No</b> | <b>Qty</b> | <b>Description</b>                       |
|-------------|----------------|------------|--|
| 0530        | 885734BMYP     | 1          | BRACKET, Front Connector                 |
| 0540        | 2176012SM      | 1          | RETAINER, Pin Spring                     |
| 0550        | 1960379SM      | 1          | NUT, Hex Lock, ESNA Light, 1/2-13        |
| 0570        | 1913744SM      | 1          | NUT, Hex Jam, 1/2-13                     |
| 0590        | 1704314SM      | 2          | FITTING, Lube                            |
| 0600        | 1922755SM      | 2          | WASHER, Flat, 3/8                        |
| 0610        | 1714760SM      | 2          | WHEEL                                    |
| 0620        | 2108765SM      | 2          | BOLT, Wheel, 3/8-16 x 2-3/4, 3/4" Thread |
| 0630        | 703158         | 2          | NUT, Hex Flange, ESNA, 3/8-16            |
| 0640        | 1960170SM      | 2          | WASHER, 1/2                              |
| 0660        | 885720BMYP     | 1          | BRACKET, Deck, Rear, RH                  |
| 0680        | 885727BMYP     | 1          | SUPPORT, Front                           |
| 0700        | 885728BMYP     | 1          | BRACKET, Front Upstop                    |
| 0710        | 885827BMYP     | 1          | DECK, 42"                                |
| 0740        | 0020X3MA       | 2          | WASHER, Spring, 1/2                      |
| 0760        | 1732426SM      | 4          | BOLT, Shoulder, 5/16-18 x 1/2            |
| 0780        | 1731414SM      | 1          | ROD, Latch                               |
| 0790        | 885699BMYP     | 1          | BRACKET, Front Hanger                    |
| 0800        | 885710YP       | 1          | BOLT, 1/2 x 3                            |
| 0820        | 885937YP       | 1          | PULLEY, Idler                            |
| 0830        | 703406         | 1          | CAPSCREW, Hex Head, 3/8-16 x 1-1/2, G5   |
| 0840        | 1752802        | 1          | BOLT, Shoulder, 5/16-18 x 1              |
| 0850        | 885846BMYP     | 1          | BRACKET, Idler Mount                     |
| 0870        | 885729BM       | 1          | PLATE, Belt Guide Mount                  |

**Footnotes:**



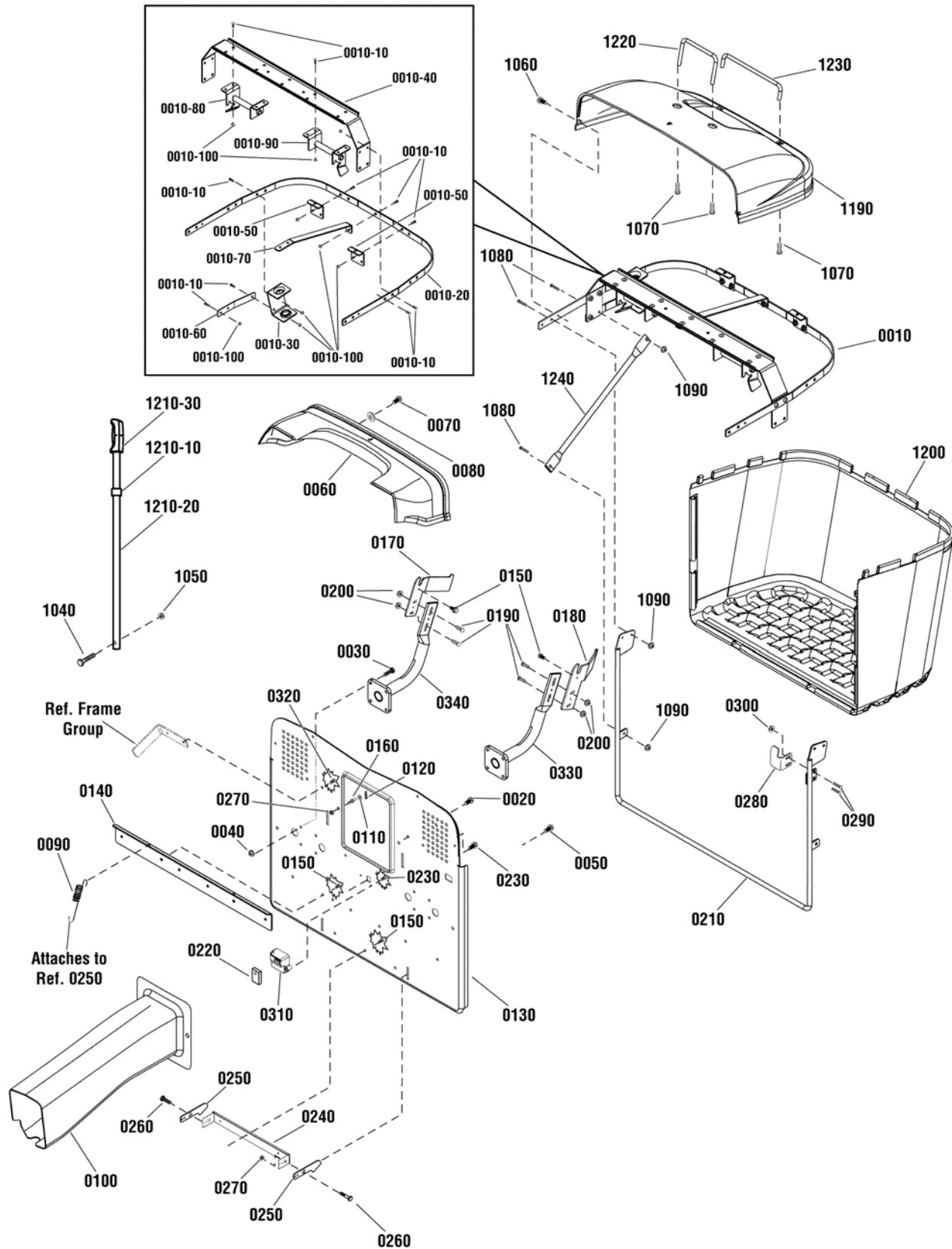


---

| <b>Item</b> | <b>Part No</b> | <b>Qty</b> | <b>Description</b>                                |
|-------------|----------------|------------|---|
| 0010        | 885598AYP      | 1          | GUARD, Middle Right                               |
| 0020        | 885599AYP      | 1          | GUARD, Middle Left                                |
| 0030        | 885892YP       | 2          | GUARD, Rear                                       |
| 0050        | 885602AYP      | 1          | BRACE, Guard                                      |
| 0060        | 885604YP       | 1          | GUARD, Front, LH                                  |
| 0070        | 885605YP       | 1          | GUARD, Front, RH                                  |
| 0080        | 703228         | 6          | CAPSCREW, Hex Washer Head, Taptite, 5/16-18 x 3/4 |
| 0090        | 1925003SM      | 5          | CAPSCREW, Hex Washer Head, Taptite, 1/4-20 x 1/2  |
| 0100        | 2821319SM      | 5          | WASHER, 1/4                                       |

**Footnotes:**

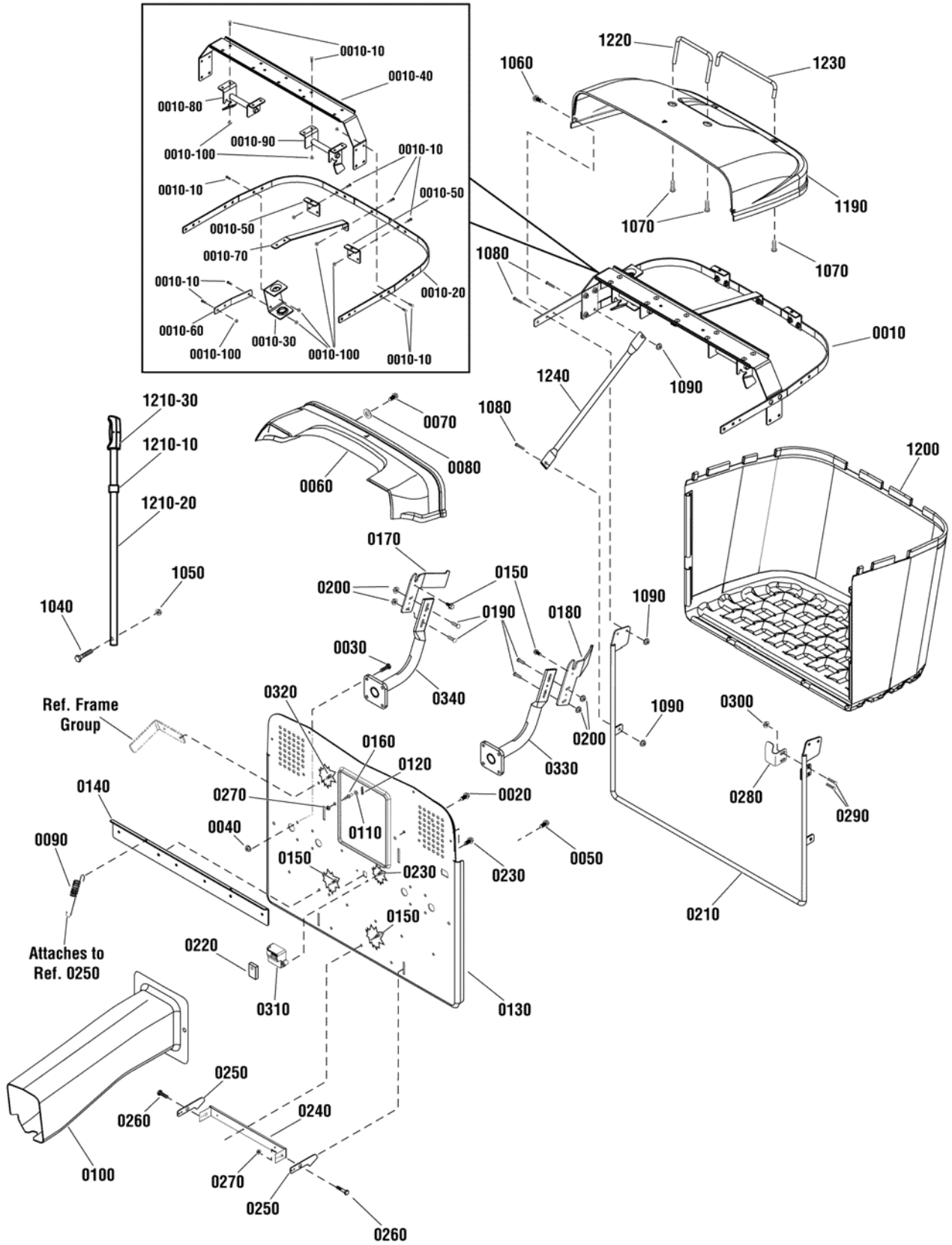
# Collector Group - 280 Liter



| <b>Item</b> | <b>Part No</b> | <b>Qty</b> | <b>Description</b>                                   |
|-------------|----------------|------------|--|
| 0010        | 885560         | 1          | FRAME ASSEMBLY                                       |
| 0010-10     | 720057         | 23         | BOLT, Carriage, 1/4-20 X 5/8 (Included in Ref. 0010) |
| 0010-20     | 885413A        | 1          | FRAME, Upper (Included in Ref. 0010)                 |
| 0010-30     | 885416A        | 1          | SUPPORT, Dump Handle (Included in Ref. 0010)         |
| 0010-40     | 885507A        | 1          | CROSS BRACE (Included in Ref. 0010)                  |
| 0010-50     | 885514A        | 2          | BRACKET, Mounting, Long (Included in Ref. 0010)      |
| 0010-60     | 885520A        | 1          | SUPPORT STRAP, Dump Handle (Included in Ref. 0010)   |
| 0010-70     | 885525A        | 1          | SUPPORT, Back, Frame (Included in Ref. 0010)         |
| 0010-80     | 885561A        | 1          | BAGGER LOCATOR ASSEMBLY, LH (Included in Ref. 0010)  |
| 0010-90     | 885562A        | 1          | BAGGER LOCATOR ASSEMBLY, RH (Included in Ref. 0010)  |
| 0010-100    | 1930641        | 23         | NUT, Hex Flange, 1/4-20 (Included in Ref. 0010)      |
| 0020        | 1664847        | 4          | CAPSCREW, Hex Washer Head, Taptite, 5/16-18 x 3/4    |
| 0030        | 1931202        | 8          | CAPSCREW, Hex Washer Head, Taptite, 5/16-18 x 1-1/4  |
| 0040        | 720139         | 10         | NUT, Hex Flange, Serrated, 5/16-18                   |
| 0050        | 1664847        | 2          | CAPSCREW, Hex Washer Head, Taptite, 5/16-18 x 3/4    |
| 0060        | 885400         | 1          | COVER, Transition                                    |
| 0070        | 1664847        | 4          | CAPSCREW, Hex Washer Head, Taptite, 5/16-18 x 3/4    |
| 0080        | 1919326        | 4          | WASHER, 5/16   |
| 0090        | 722494         | 2          | SPRING, Extension                                    |
| 0100        | 885461         | 1          | CHUTE  |
| 0110        | 1960170        | 2          | WASHER, 1/2  |
| 0120        | 1960074        | 2          | CLIP, Hair Pin                                       |
| 0130        | 885651A        | 1          | BACK PLATE   |
| 0140        | 885470A        | 1          | BRACE, Lower Back Plate                              |
| 0150        | 1664847        | 7          | CAPSCREW, Hex Washer Head, Taptite, 5/16-18 x 3/4    |
| 0160        | 721221         | 2          | PIN, Threaded Shoulder                               |
| 0170        | 885494A        | 1          | PLATE, Rotation, RH                                  |
| 0180        | 885473A        | 1          | PLATE, Rotation, LH                                  |
| 0190        | 1931333        | 4          | BOLT, Carriage, Short Neck, 5/16-18 x 3/4, G5        |
| 0200        | 720139         | 4          | NUT, Hex Flange, Serrated, 5/16-18                   |
| 0210        | 885566A        | 1          | FRAME, Bagger  |
| 0220        | 885573         | 1          | SWITCH, Bag Full                                     |
| 0230        | 880760         | 2          | SCREW, Plastite, #10-14 x 7/8                        |
| 0240        | 885497A        | 1          | BRACKET, Bagger Latch                                |
| 0250        | 885496A        | 2          | LATCH, Bagger  |
| 0260        | 720091         | 2          | BOLT, Shoulder                                       |
| 0270        | 720142         | 4          | NUT, Hex Flange, Center Lock, 3/8-16                 |
| 0280        | 885489A        | 1          | PLATE, Switch  |
| 0290        | 720057         | 2          | BOLT, Carriage, 1/4-20 x 5/8                         |
| 0300        | 1930641        | 2          | NUT, Hex Flange, Whiz Lock, 1/4-20                   |
| 0310        | 885618         | 1          | COVER, Bag Full Switch                               |
| 0320        | 722858         | 4          | CAPSCREW, 5/16-18 x 3/4                              |
| 0330        | 885652A        | 1          | SUPPORT, Bagger, LH                                  |
| 0340        | 885653A        | 1          | SUPPORT, Bagger, RH                                  |

**Footnotes:**

**Collector Group - 280 Liter**

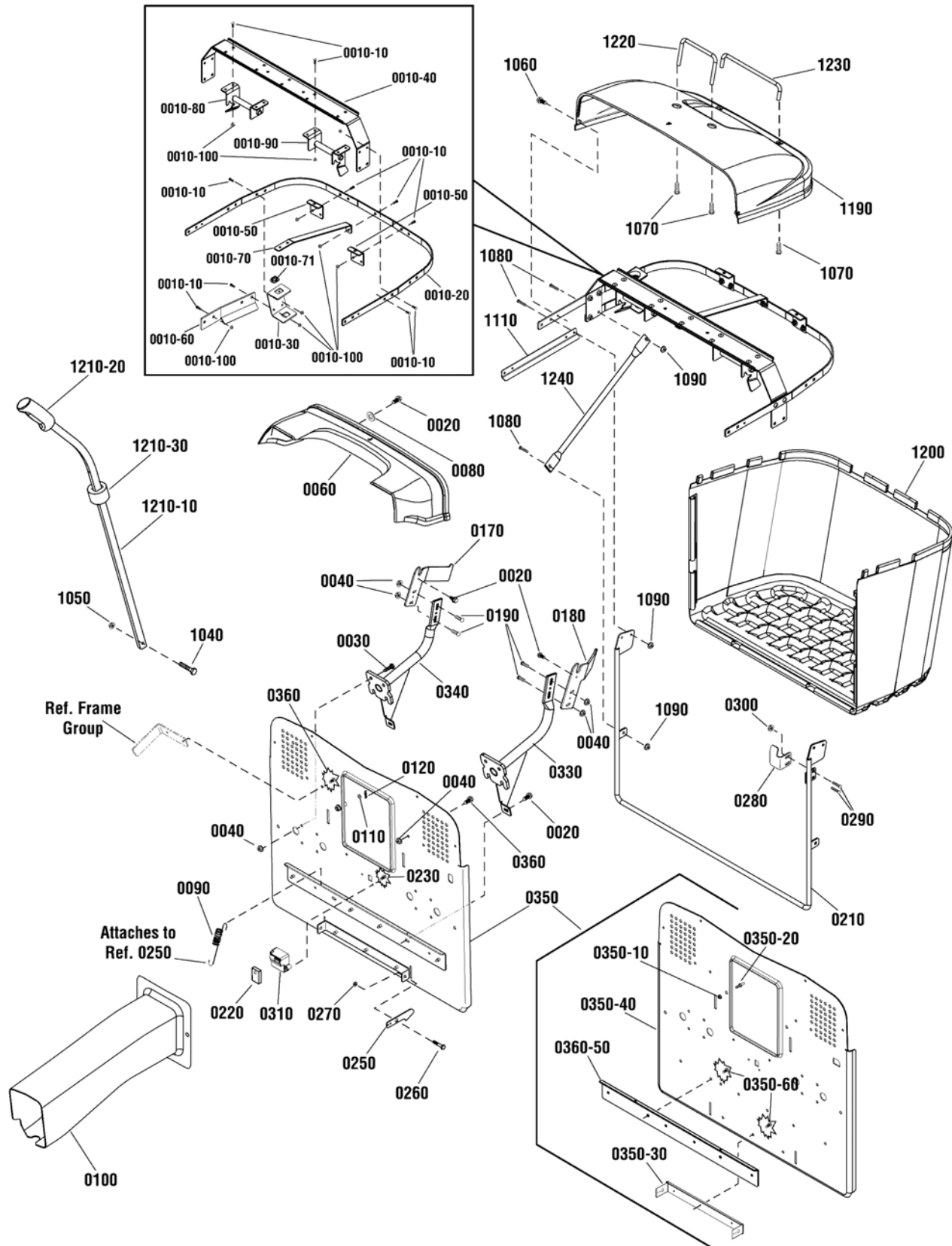


---

| <b>Item</b> | <b>Part No</b> | <b>Qty</b> | <b>Description</b>                             |
|-------------|----------------|------------|--|
| 1040        | 720033         | 1          | CAPSCREW, Hex Flange Lock, 1/4-20 x 1-1/4      |
| 1050        | 720146         | 1          | NUT, Hex Flange, Lock, 1/4-20                  |
| 1060        | 885564         | 2          | SCREW, Torx, 1/4-20                            |
| 1070        | 7091016        | 4          | SCREW, Hex Washer Head, Self Tap, 1/4-20 x 5/8 |
| 1080        | 1960593        | 8          | BOLT, Carriage, 1/4-20 x 5/8                   |
| 1090        | 1930641        | 8          | NUT, Hex Flange, Whiz Lock, 1/4-20             |
| 1190        | 885401         | 1          | COVER, Collector, Red                          |
| 1200        | 885510         | 1          | BAG, Collector                                 |
| 1210-10     | 885433         | 1          | ADJUSTER, Bagger Handle                        |
| 1210-20     | 885518A        | 1          | HANDLE, Bagger                                 |
| 1210-30     | 1723359        | 1          | GRIP, Lift Rod                                 |
| 1220        | 885425A        | 1          | HANDLE, Front                                  |
| 1230        | 885430A        | 1          | HANDLE, Back                                   |
| 1240        | 885429A        | 2          | STIFFENER                                      |

**Footnotes:**

**Collector Group - 350 Liter**



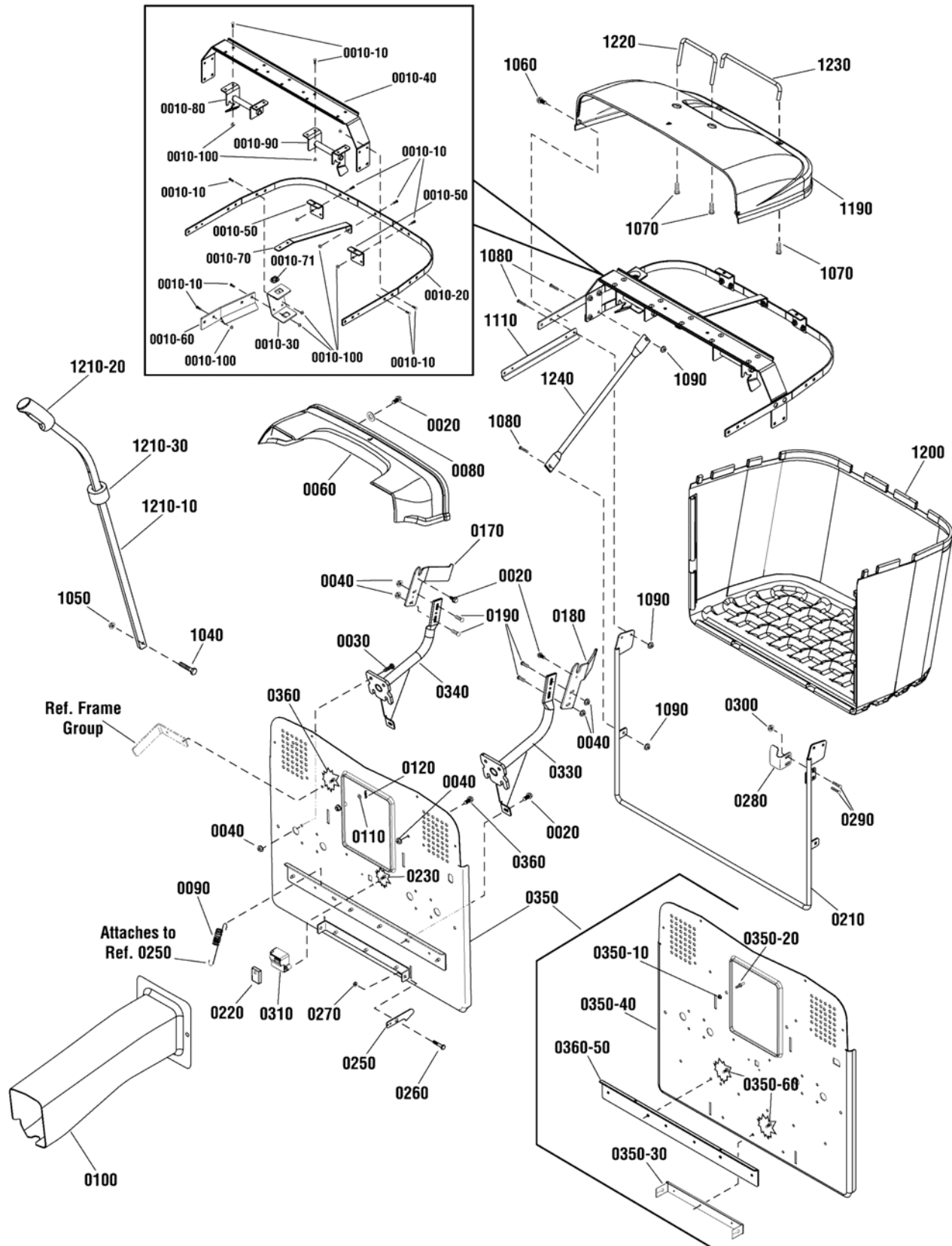
| Item     | Part No    | Qty | Description   |
|----------|------------|-----|---|
| 0010-10  | 002X82MA   | 25  | BOLT, Carriage, 1/4-20 X 5/8                        |
| 0010-20  | 885759BMYP | 1   | FRAME, Upper  |
| 0010-30  | 885858BMYP | 1   | SUPPORT, Dump Handle                                |
| 0010-40  | 885507AYP  | 1   | CROSS BRACE   |
| 0010-50  | 885514AYP  | 2   | BRACKET, Mounting, Long                             |
| 0010-60  | 885889BMYP | 1   | SUPPORT STRAP, Dump Handle                          |
| 0010-70  | 885525AYP  | 1   | SUPPORT, Back, Frame                                |
| 0010-71  | 885864YP   | 1   | BUSHING, Handle                                     |
| 0010-80  | 885866BMYP | 1   | BAGGER LOCATOR ASSEMBLY, LH                         |
| 0010-90  | 885867BMYP | 1   | BAGGER LOCATOR ASSEMBLY, RH                         |
| 0010-100 | 1930641SM  | 25  | NUT, Hex Flange, 1/4-20                             |
| 0020     | 703228     | 8   | CAPSCREW, Hex Washer Head, Taptite, 5/16-18 x 3/4   |
| 0030     | 703167     | 8   | CAPSCREW, Hex Washer Head, Taptite, 5/16-18 x 1-1/4 |
| 0040     | 1931277SM  | 10  | NUT, Hex Flange, 5/16-18                            |
| 0060     | 885755YP   | 1   | COVER, Transition                                   |
| 0080     | 1919326SM  | 4   | WASHER, 5/16  |
| 0090     | 165X75MA   | 2   | SPRING, Extension                                   |
| 0100     | 885769YP   | 1   | CHUTE   |
| 0110     | 1960170SM  | 2   | WASHER, 1/2   |
| 0120     | 1960074SM  | 2   | CLIP, Hair Pin                                      |
| 0170     | 885853BMYP | 1   | PLATE, Rotation, RH                                 |
| 0180     | 885852BMYP | 1   | PLATE, Rotation, LH                                 |
| 0190     | 703185     | 4   | BOLT, Carriage, Short Neck, 5/16-18 x 3/4, G5       |
| 0210     | 885566AYP  | 1   | FRAME, Bagger                                       |
| 0220     | 885573YP   | 1   | SWITCH, Bag Full                                    |
| 0230     | 880760YP   | 2   | SCREW, Plastite, #10-14 x 7/8                       |
| 0250     | 885496AYP  | 2   | LATCH, Bagger                                       |
| 0260     | 009X39MA   | 2   | BOLT, Shoulder                                      |
| 0270     | 015X84MA   | 2   | NUT, Hex Flange, Center Lock, 3/8-16                |
| 0280     | 885489AYP  | 1   | PLATE, Switch                                       |
| 0290     | 002X82MA   | 2   | BOLT, Carriage, 1/4-20 x 5/8                        |
| 0300     | 1930641SM  | 2   | NUT, Hex Flange, Whiz Lock, 1/4-20                  |
| 0310     | 885618YP   | 1   | COVER, Bag Full Switch                              |
| 0330     | 885825BMYP | 1   | SUPPORT, Bagger, LH                                 |
| 0340     | 885826BMYP | 1   | SUPPORT, Bagger, RH                                 |
| 0350     | 885893BMYP | 1   | BACK PLATE ASSEMBLY                                 |
| 0350-10  | 015X84MA   | 2   | NUT, Hex Flange, Center Lock, 3/8-16                |
| 0350-20  | 094067MA   | 2   | PIN, Threaded Shoulder                              |
| 0350-30  | 885497AYP  | 1   | BRACKET, Bagger Latch                               |
| 0350-40  | -----      | 1   | BACKPLATE   |
| 0350-50  | -----      | 1   | BRACE, Lower Back Plate                             |
| 0350-60  | 703228     | 7   | CAPSCREW, Hex Washer Head, Taptite, 5/16-18 x 3/4   |
| 0360     | 703410     | 6   | BOLT, 5/16-18 x 1                                   |
| 1040     | 001X94MA   | 1   | CAPSCREW, Hex Flange Lock, 1/4-20 x 1-1/4           |

**Footnotes:**

(Includes Ref. Nos. 0350-10, 0350-20, 0350-30, 0350-40, 0350-50 & 0350-60)

(Not a serviceable part. Order Ref. No. 0350)

**Collector Group - 350 Liter**





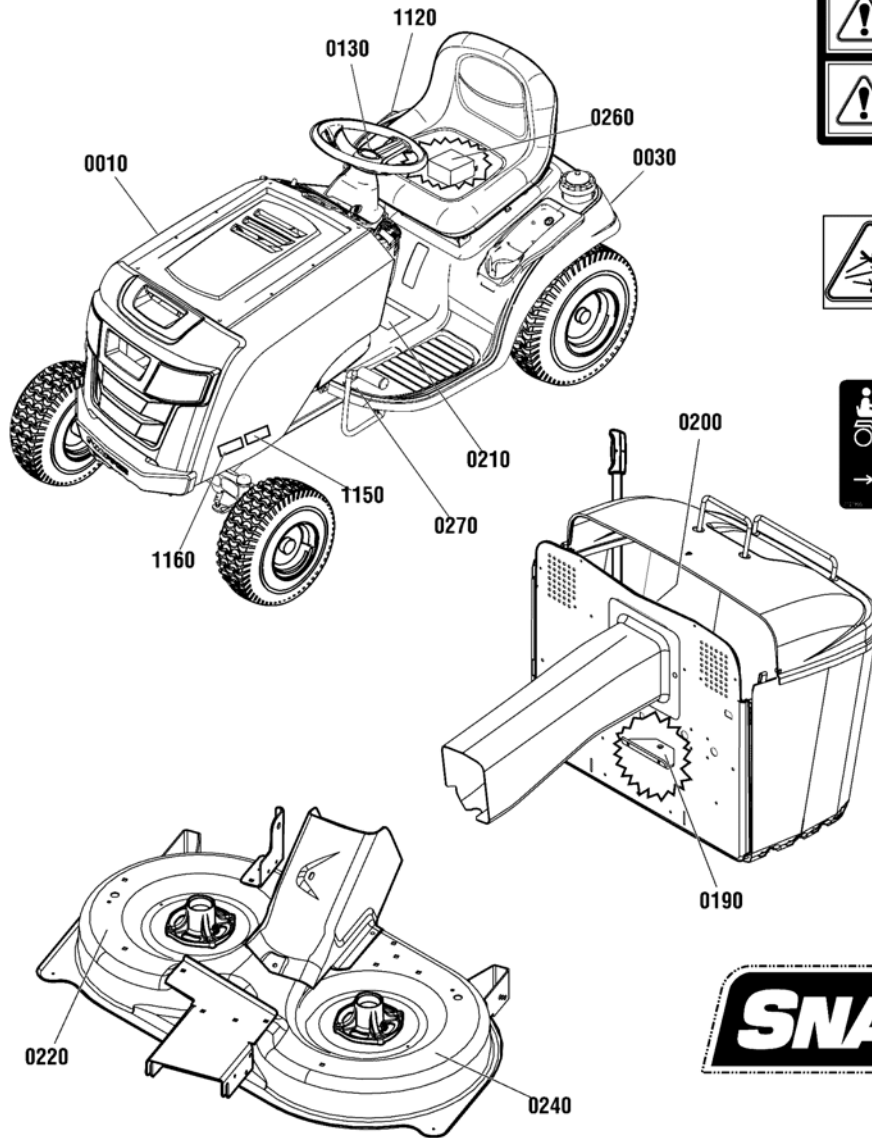
---

| <b>Item</b> | <b>Part No</b> | <b>Qty</b> | <b>Description</b>                             |
|-------------|----------------|------------|--|
| 1050        | 015X89MA       | 1          | NUT, Hex Flange, Lock, 1/4-20                  |
| 1060        | 885564YP       | 2          | SCREW, Torx, 1/4-20                            |
| 1070        | 7091016YP      | 4          | SCREW, Hex Washer Head, Self Tap, 1/4-20 x 5/8 |
| 1080        | 002X82MA       | 8          | BOLT, Carriage, 1/4-20 x 5/8                   |
| 1090        | 1930641SM      | 12         | NUT, Hex Flange, Whiz Lock, 1/4-20             |
| 1110        | 885758BMYP     | 2          | GUSSET   |
| 1190        | 885401YP       | 1          | COVER, Collector, Red                          |
| 1200        | 885761YP       | 1          | BAG, Collector, 350L                           |
| 1210-10     | 885859BMYP     | 1          | HANDLE, Bagger                                 |
| 1210-20     | 885886YP       | 1          | GRIP, Lift Rod                                 |
| 1210-30     | 885888YP       | 1          | ADJUSTER, Bagger Handle                        |
| 1220        | 885425AYP      | 1          | HANDLE, Front                                  |
| 1230        | 885430AYP      | 1          | HANDLE, Back                                   |
| 1240        | 885773BMYP     | 2          | STIFFENER                                      |

**Footnotes:**

(Includes Ref. Nos. 0350-10, 0350-20, 0350-30, 0350-40, 0350-50 & 0350-60)

(Not a serviceable part. Order Ref. No. 0350)



0210



0200



0220



0030



0190



0260



0130



0270



0010



0240



1150



1160

---

| <b>Item</b> | <b>Part No</b> | <b>Qty</b> | <b>Description</b>                   |
|-------------|----------------|------------|--------------------------------------|
| 0010        | 1751632YP      | 2          | DECAL, Logo, Hood                    |
| 0030        | 7101935YP      | 1          | DECAL, Roll Release                  |
| 0130        | 1739085YP      | 1          | DECAL, Steering Wheel                |
| 0190        | 48X511MA       | 1          | DECAL, Drawbar Warning Symbol        |
| 0200        | 1721107SM      | 1          | DECAL, Discharge Tube Symbols        |
| 0210        | 1723175SM      | 1          | DECAL, Tunnel                        |
| 0220        | 1720389SM      | 2          | DECAL, Danger Rotation Blade Symbols |
| 0240        | 885625YP       | 1          | DECAL, Cutting Width, 38" (96cm)     |
| 0240        | 1753467YP      | 2          | DECAL, Cutting Width, 42" (107cm)    |
| 0260        | 885627YP       | 1          | DECAL, Battery                       |
| 0270        | 48X736MA       | 1          | DECAL, Clutch/Brake                  |
| 1120        | 1730264SM      | 1          | DECAL, Height of Cut                 |
| 1150        | 885900YP       | 2          | DECAL, RPX Series                    |
| 1150        | 885902YP       | 2          | DECAL, RXT Series                    |
| 1160        | 885873YP       | 1          | DECAL, Model, ERPX17538RDF           |
| 1160        | 885874YP       | 1          | DECAL, Model, ERPX1838RDF            |
| 1160        | 885897YP       | 1          | DECAL, Model, ERXT2242RDF            |
| 1160        | 885898YP       | 1          | DECAL, Model, ERXT2642RDF            |

**Footnotes:**



| <b>Item</b> | <b>Part No</b> | <b>Qty</b> | <b>Description</b>                                 |
|-------------|----------------|------------|--|
| 0010        | 885904YP       | 1          | WIRING HARNESS                                     |
| 0010-10     | -----          | 1          | * FUSE, 20 Amp                                     |
| 0030        | 1930601        | 5          | CAPSCREW, Hex Washer Head, Taptite, 5/16-18 x 5/8  |
| 0040        | -----          | 1          | BATTERY, 12 Volt                                   |
| 0041        | 885428YP       | 1          | CONTAINER, Battery                                 |
| 0042        | 885511BMYP     | 1          | HOLD DOWN, Battery                                 |
| 0043        | 1720117SM      | 1          | BUZZER, Bag Full                                   |
| 0044        | 1001845MA      | 1          | SWITCH, Bagger                                     |
| 0045        | 885692YP       | 1          | HARNESS, Bag Full                                  |
| 0046        | 703228         | 2          | SCREW, Hex Washer Head, Thread Roll, 5/16-18 x 3/4 |
| 0047        | 7091811SM      | 1          | BOLT, Hex Flange, 5/16-18 x 5/8                    |
| 0100        | 1728963SM      | 1          | SOLENOID   |
| 0110        | B4300GS        | 2          | CAPSCREW, Hex Head, 1/4-20 x 1/2                   |
| 0135        | 1722611SM      | 1          | PLUG, Hole   |
| 0160        | 1750464YP      | 1          | KEY, Ingition, Blister Pack                        |
| 0180        | 1738982YP      | 1          | SWITCH, PTO  |
| 0190        | 1726556SM      | 1          | SWITCH, Reverse Mow                                |
| 0210        | 1738983YP      | 1          | SWITCH, Light                                      |
| 0230        | 1728026BMYP    | 1          | SUPPORT, RMO Switch                                |
| 0240        | 703185         | 2          | BOLT, Carriage, 5/16-18 x 3/4, GR5                 |
| 0250        | 1931277SM      | 3          | NUT, Flange, 5/16-18, GR5                          |
| 0260        | 1732006YP      | 1          | SWITCH, Push Button (NO/NC)                        |
| 0280        | 885616YP       | 1          | BATTERY CABLE                                      |
| 0290        | 1721830SM      | 1          | CABLE, #6 x 25                                     |
| 0300        | 1713163SM      | 1          | CABLE, # 6 x 26.0                                  |
| 0320        | 2860750SM      | 2          | NUT, Hex Lock, KEPS, 5/16-24                       |
| 0370        | 1701011SM      | 14         | TIE, Self Lock                                     |
| 0390        | 1732004SM      | 1          | SWITCH, Push Button (NO)                           |
| 0410        | 703233         | 1          | NUT, Flange, Serarated, 1/4-20, GR5                |
| 0420        | 1726557SM      | 2          | KEY, No Mow  |
| 0430        | 2172434SM      | 1          | CLIP, Wire   |
| 0560        | 1752934YP      | 1          | PLUG, Dash   |
| 0620        | 1732007SM      | 1          | PLUG, Hole   |
| 0630        | 1737959YP      | 1          | SWITCH, Ingition                                   |
| 0650        | 1751941YP      | 1          | HARNESS, Headlight                                 |
| 0690        | 1753240YP      | 1          | PLUG, Starter Insert                               |
| 1270        | 51716          | 2          | NUT, M5 x 0.8                                      |
| 1271        | 52618          | 2          | SCREW, M5 x 0.8 x 12                               |
| 1272        | 51713          | 4          | WASHER, M5   |

**Footnotes:**

Note\* See your local hardware store for replacement fuses.

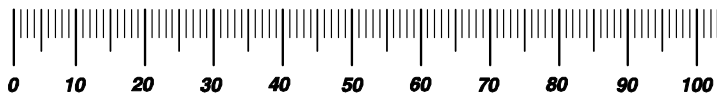


# Hardware Identification & Torque Specifications

| Torque Specification Chart                             |           |      |           |      |            |      |            |      |
|--|-----------|------|-----------|------|------------|------|------------|------|
| FOR STANDARD METRIC MACHINE HARDWARE (Tolerance ± 20%) |           |      |           |      |            |      |            |      |
| Property Class   | 5.6       |      | 8.8       |      | 10.9       |      | 12.9       |      |
|  | Class 5.6 |      | Class 8.8 |      | Class 10.9 |      | Class 12.9 |      |
| Size Of Hardware                                       | in/lbs    |      | in/lbs    |      | in/lbs     |      | in/lbs     |      |
|  | ft/lbs    | Nm.  | ft/lbs    | Nm.  | ft/lbs     | Nm.  | ft/lbs     | Nm.  |
| M3   | 5.88      | .56  | 13.44     | 1.28 | 19.2       | 1.80 | 22.92      | 2.15 |
| M4   | 13.44     | 1.28 | 30.72     | 2.90 | 43.44      | 4.10 | 52.56      | 4.95 |
| M5   | 26.4      | 2.50 | 60.96     | 5.75 | 5.97       | 8.10 | 7.15       | 9.7  |
| M6   | 44.64     | 4.3  | 7.3       | 9.9  | 10.3       | 14   | 12.1       | 16.5 |
| M7   | 5.2       | 7.1  | 12.1      | 16.5 | 16.9       | 23   | 19.9       | 27   |
| M8   | 7.7       | 10.5 | 17.7      | 24   | 25         | 34   | 29         | 40   |
| M10  | 15        | 21   | 35        | 48   | 50         | 67   | 59         | 81   |
| M12  | 26        | 36   | 61        | 83   | 86.2       | 117  | 103        | 140  |
| M14  | 42        | 58   | 101       | 132  | 136        | 185  | 162        | 220  |
| M16  | 64        | 88   | 147       | 200  | 210        | 285  | 250        | 340  |
| M18  | 89        | 121  | 202       | 275  | 287        | 390  | 346        | 470  |
| M20  | 126       | 171  | 290       | 390  | 405        | 550  | 486        | 660  |
| M22  | 169       | 230  | 390       | 530  | 559        | 745  | 656        | 890  |
| M24  | 217       | 295  | 497       | 375  | 708        | 960  | 840        | 1140 |
| M27  | 320       | 435  | 733       | 995  | 1032       | 1400 | 1239       | 1680 |
| M30  | 435       | 590  | 995       | 1350 | 1401       | 1900 | 1681       | 2280 |
| M33  | 590       | 800  | 1349      | 1830 | 1902       | 2580 | 2278       | 3090 |
| M36  | 759       | 1030 | 1740      | 2360 | 2441       | 3310 | 2935       | 3980 |
| M39  | 988       | 1340 | 2249      | 3050 | 3163       | 4290 | 3798       | 5150 |

| Torque Specification Chart                      |             |       |             |       |             |         |
|---|-------------|-------|-------------|-------|-------------|---------|
| FOR STANDARD MACHINE HARDWARE (Tolerance ± 20%) |             |       |             |       |             |         |
| Hardware Grade                                  | No Marks    |       | SAE Grade 5 |       | SAE Grade 8 |         |
|   | SAE Grade 2 |       | SAE Grade 5 |       | SAE Grade 8 |         |
| Size Of Hardware                                | in/lbs      |       | in/lbs      |       | in/lbs      |         |
|   | ft/lbs      | Nm.   | ft/lbs      | Nm.   | ft/lbs      | Nm.     |
| 8-32  | 19          | 2.1   | 30          | 3.4   | 41          | 4.6     |
| 8-36  | 20          | 2.3   | 31          | 3.5   | 43          | 4.9     |
| 10-24   | 27          | 3.1   | 43          | 4.9   | 60          | 6.8     |
| 10-32   | 31          | 3.5   | 49          | 5.5   | 68          | 7.7     |
| 1/4-20  | 66          | 7.6   | 8           | 10.9  | 12          | 16.3    |
| 1/4-28  | 76          | 8.6   | 10          | 13.6  | 14          | 19.0    |
| 5/16-18   | 11          | 15.0  | 17          | 23.1  | 25          | 34.0    |
| 5/16-24   | 12          | 16.3  | 19          | 25.8  | 29          | 34.0    |
| 3/8-16  | 20          | 27.2  | 30          | 40.8  | 45          | 61.2    |
| 3/8-24  | 23          | 31.3  | 35          | 47.6  | 50          | 68.0    |
| 7/16-14   | 30          | 40.8  | 50          | 68.0  | 70          | 95.2    |
| 7/16-20   | 35          | 47.6  | 55          | 74.8  | 80          | 108.8   |
| 1/2-13  | 50          | 68.0  | 75          | 102.0 | 110         | 149.6   |
| 1/2-20  | 55          | 74.8  | 90          | 122.4 | 120         | 163.2   |
| 9/16-12   | 65          | 88.4  | 110         | 149.6 | 150         | 204.0   |
| 9/16-18   | 75          | 102.0 | 120         | 163.2 | 170         | 231.2   |
| 5/8-11  | 90          | 122.4 | 150         | 204.0 | 220         | 299.2   |
| 5/8-18  | 100         | 136   | 180         | 244.8 | 240         | 326.4   |
| 3/4-10  | 160         | 217.6 | 260         | 353.6 | 386         | 525.0   |
| 3/4-16  | 180         | 244.8 | 300         | 408.0 | 420         | 571.2   |
| 7/8-9   | 140         | 190.4 | 400         | 544.0 | 600         | 816.0   |
| 7/8-14  | 155         | 210.8 | 440         | 598.4 | 660         | 897.6   |
| 1-8   | 220         | 299.2 | 580         | 788.8 | 900         | 1,244.0 |
| 1-12  | 240         | 326.4 | 640         | 870.4 | 1,000       | 1,360.0 |

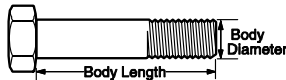
The guides and ruler furnished below are designed to help you select the appropriate hardware.



Nut, M8

Thread Diameter (mm)  
Inside Diameter (in)    Threads per inch

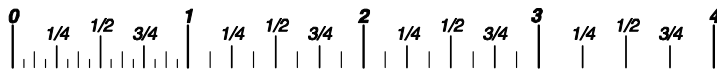
Nut, 1/2-16



Screw, M8- 1.25 x 25

Thread Diameter (mm)    Distance between threads (mm)    Body Length (mm)  
Body Diameter    Threads per inch    Body Length (in)

Screw, 1/2- 16 x 2



## Standard Hardware Sizing

When a washer or nut is identified as 1/2" (M8), this is the *Nominal size*, meaning the *inside diameter* is 1/2 inch (8mm metric thread diameter); if a second number is present it represents the *threads per inch* (distance between threads).

When bolt or capscrew is identified as 1/2 - 16 x 2" (M8 - 1.25 x 50), this means the *Nominal size*, or body diameter is 1/2 inch (8mm metric thread diameter), the second number, 16, represents the *threads per inch*, (1.25 thread diameter). The final number is the body length of the bolt or screw, 2 inches (50mm).

## NOTES

- These torque values are to be used for all hardware excluding: locknuts, self-tapping screws, thread forming screws, sheet metal screws and socket head setscrews.
- Recommended seating torque values for locknuts:
  - for prevailing torque locknuts - use 65% of grade 5 torques.
  - for flange whizlock nuts and screws - use 135% of grade 5 torques.
- Unless otherwise noted on assembly drawings, all torque values must meet this specification.

## Common Hardware Types

Hex Head Capscrew



Washer



Carriage Bolt



Lockwasher



Hex Nut



## Wrench & Fastener Size Guide

|                                  |                                  |                                  |  |                                 |
|----------------------------------|----------------------------------|----------------------------------|--|---------------------------------|
| 1/4" Bolt or Nut<br>Wrench—7/16" | 5/16" Bolt or Nut<br>Wrench—1/2" | 3/8" Bolt or Nut<br>Wrench—9/16" | 7/16" Bolt or Nut<br>Wrench (Bolt)—5/8"<br>Wrench (Nut)—11/16" | 1/2" Bolt or Nut<br>Wrench—3/4" |
| M6 Bolt or Nut<br>Wrench—10mm    | M8 Bolt or Nut<br>Wrench—13mm    | M10 Bolt or Nut<br>Wrench—17mm   | M12 Bolt or Nut<br>Wrench—19mm                                 | M14 Bolt or Nut<br>Wrench—22mm  |

*Parts Manual for*

# **SNAPPER®**

***17.5, 18, 22 & 26 HP 96cm & 107cm  
Rear Discharge European Tractor  
RD Series***

IT IS THE POLICY OF BRIGGS & STRATTON CORP TO IMPROVE ITS PRODUCTS WHENEVER IT IS POSSIBLE AND PRACTICAL TO DO SO. WE RESERVE THE RIGHT TO MAKE CHANGES OR ADD IMPROVEMENTS AT ANY TIME WITHOUT INCURRING ANY OBLIGATION TO MAKE SUCH CHANGES ON PRODUCTS

**Briggs & Stratton Yard Power Products Group**

535 Macon Road  
McDonough, GA, 30253 U.S.A.  
800-935-2967

[www.snapper.com](http://www.snapper.com)

Copyright © 2013 Briggs & Stratton Corporation  
Milwaukee, WI USA. All Rights Reserved

**Manual No. 7106020**

**Revision: C 9/5/2013**