

SRM-3610T/U

Serial Number

38000001-38999999

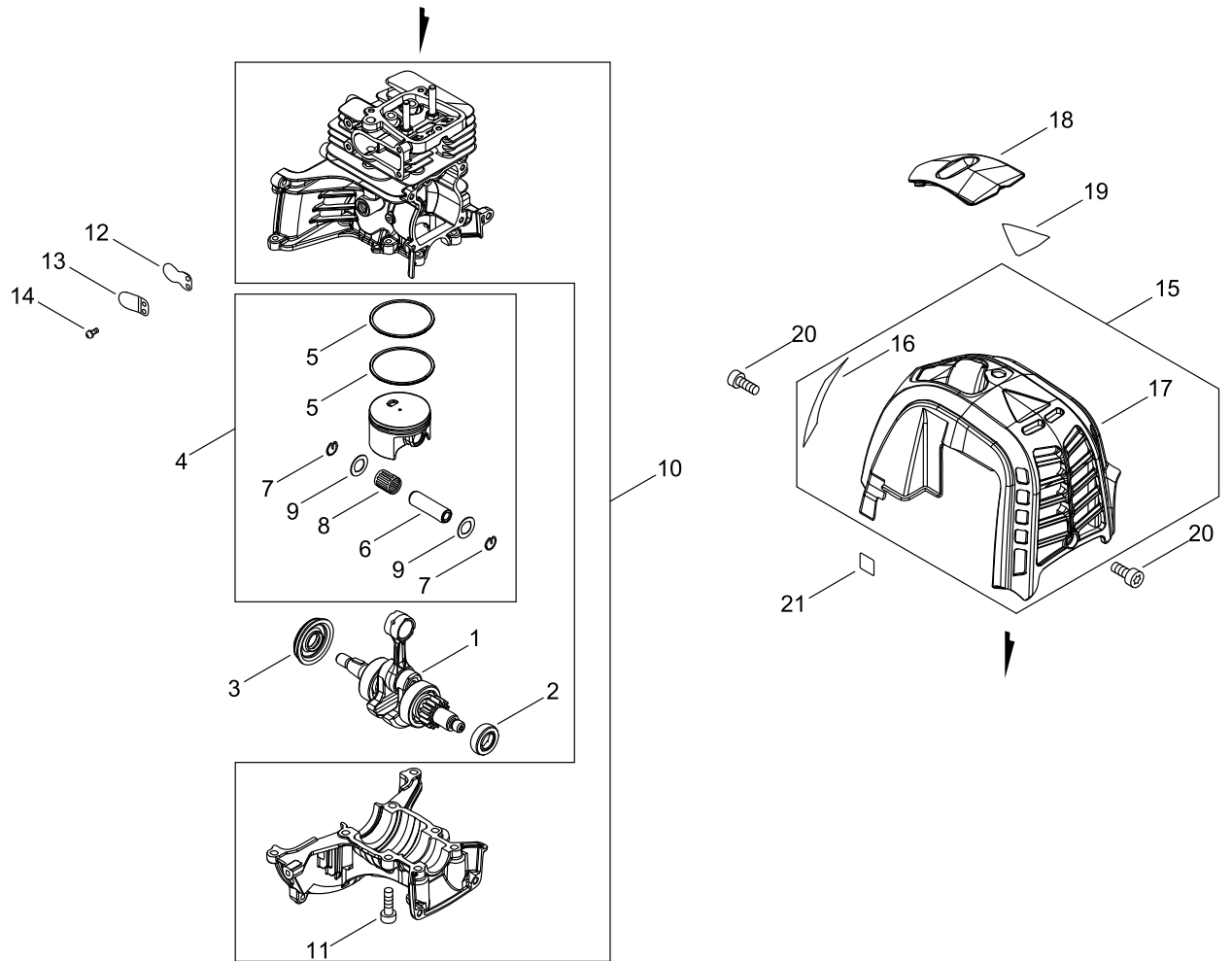
Last updated date

26/Dec/2020

TABLE OF CONTENTS

CYLINDER, PISTON, CRANKSHAFT	1
VALVE, CAM	3
MAGNETO.....	5
CLUTCH.....	7
AIR CLEANER, CARBURETOR.....	9
CARBURETOR.....	11
FUEL TANK	13
MUFFLER.....	15
RECOIL STARTER, PULLY	17
GEAR CASE, SHIELD	19
MAIN PIPE, HANDLE.....	21
THROTTLE.....	23
ACCESSORIES	25
NYLON LINE CUTTER	27

CYLINDER, PISTON, CRANKSHAFT



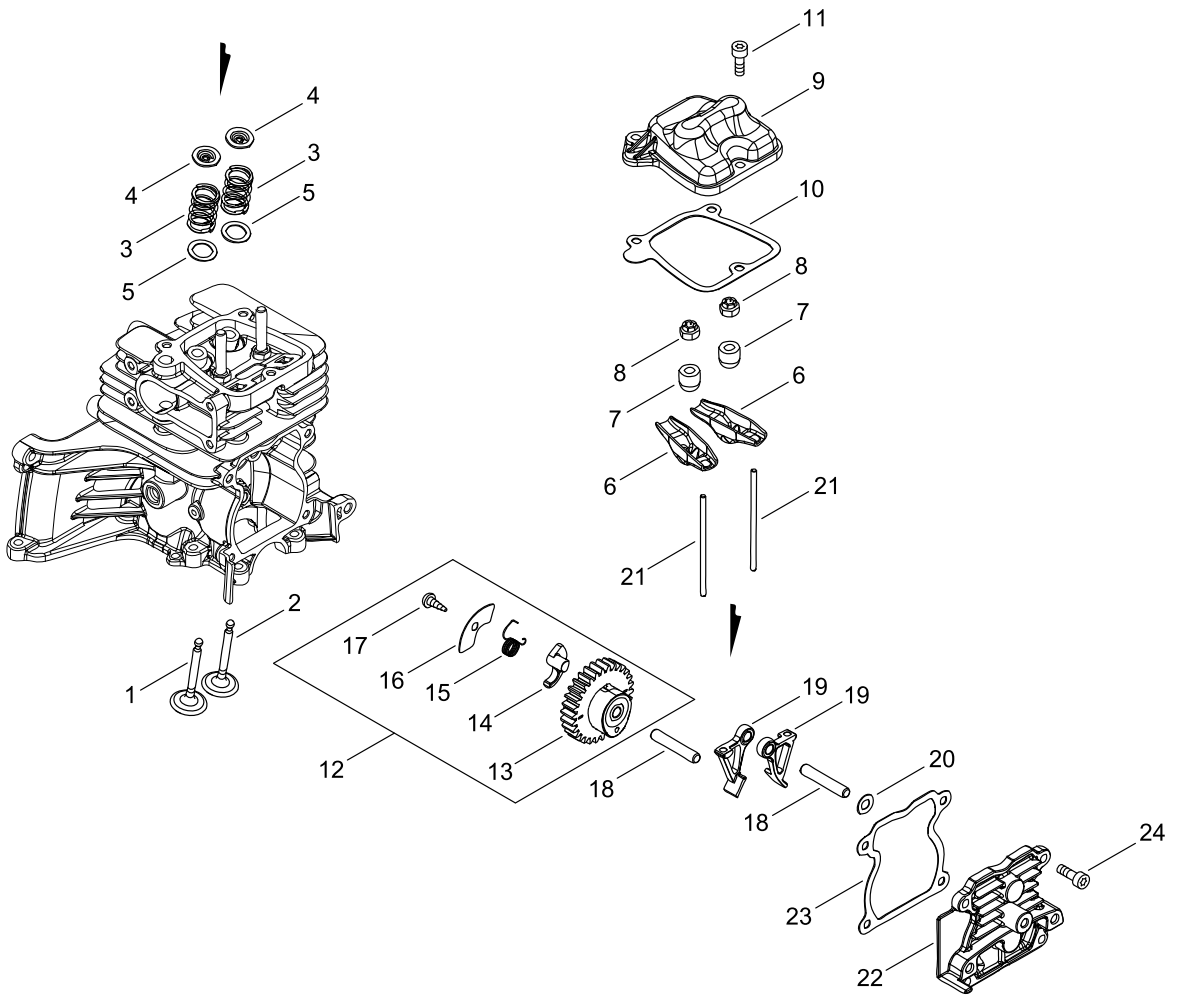
CYLINDER, PISTON, CRANKSHAFT

Key No.	LV (+)	Parts Number	Parts Description	Qty	Standard	Class
1		A011-001530	CRANKSHAFT,ASY	1		D
2		V505-000020	SEAL,OIL 12	1	12*22*7	C
3		V505-000011	SEAL,OIL 12	1	12*32*5.5	C
4		P100-004740	PISTON KIT	1		
5	+	A101-000730	RING, PISTON	2		B
6	+	V608-000000	PIN,ENG 10	1		D
7	+	V580-000010	RING,END	2	10	C
8	+	V555-000010	BEARING,NEEDLE 10	1		B
9	+	V307-000580	WASHER,CIRCULAR 10	2	10.2*16*0.5	C
10		P100-004730	CYL. CRANKCASE SET	1		
11	+	V805-000250	BOLT, TORX 5	8	TB-5*16 12.9	C
12		A211-000021	VALVE, REED	1		C
13		A212-000021	GUIDE, VALVE	1		C
14		91341-03006	SCREW	2	3*6	
15		A160-003390	COVER,CYLINDER	1		C
16	+	X502-000390	LABEL,ECHO	1	ECHO 72.5*15	D
17	+	A160-003410	COVER,CYLINDER	1		C
18		A429-000220	COVER,CAP	1		C
19		X530-000590	LABEL,EYE CATCHER	1	X SERIES 3610T	D
20		V805-000140	BOLT, TORX 5	3	TB-5*12 10.9	C
21		X524-001901	LABEL	1		D

Class : Consumable class

A:Fast moving parts B:Semi-fast moving parts C:Slow moving parts D:Order only as needed

VALVE, CAM



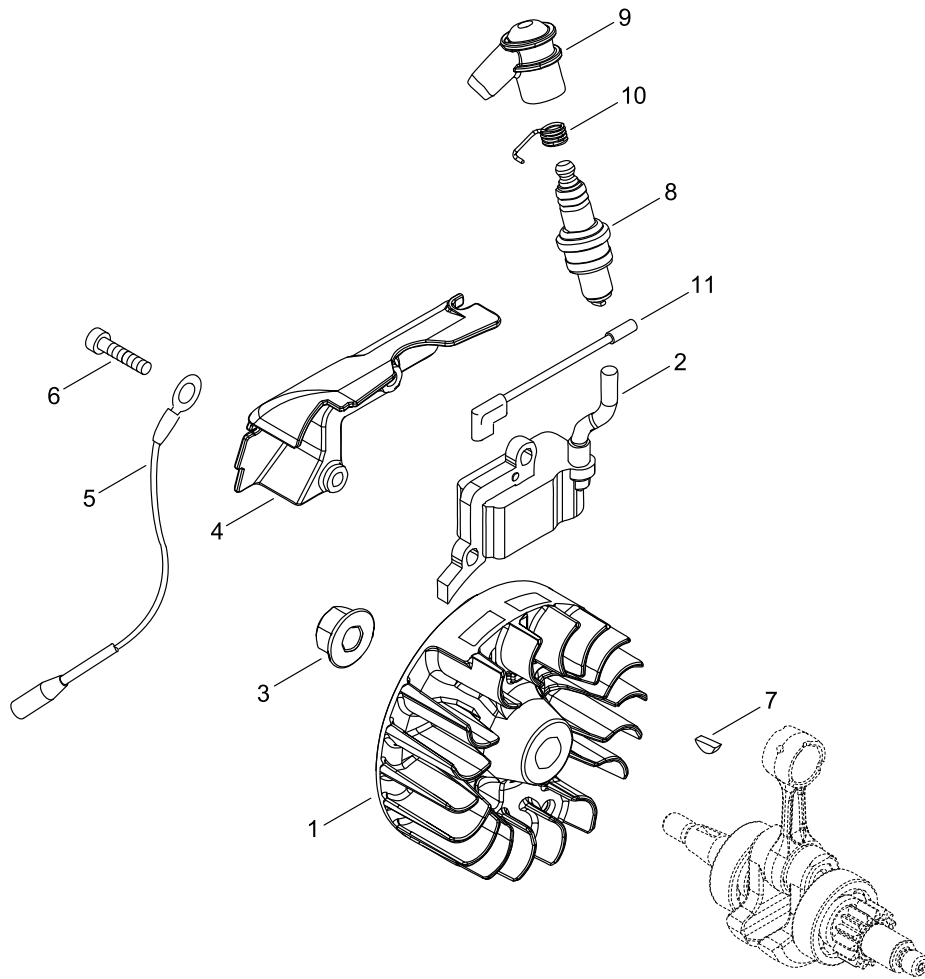
VALVE, CAM

Key No.	LV (+)	Parts Number	Parts Description	Qty	Standard	Class
1		A603-000090	VALVE	1		D
2		A603-000100	VALVE	1		D
3		A604-000030	SPRING,VALVE	2		D
4		A606-000040	RETAINER	2		D
5		V392-000030	PLATE	2		C
6		A610-000090	ARM,ROCKER	2		D
7		V353-000720	COLLAR,5	2		C
8		V263-000500	NUT,5	2	M5X0.8	C
9		A137-000040	COVER,ROCKER ARM	1		C
10		V109-000340	GASKET	1		A
11		V804-000040	BOLT, TORX 4	3	TB-4*10 10.9	C
12		P100-004750	CAM GEAR ASY	1		
13	+	A622-000020	GEAR,CAM	1		C
14	+	A146-000020	WEIGHT,DECOMP	1		C
15	+	V452-001800	SPRING,TORSION	1		B
16	+	C603-000240	PLATE	1		C
17	+	V252-000930	SCREW,4	1	4XL6	C
18		900330-50280	ROLLER	2	5*28	
19		A600-000020	LIFTER	2		D
20		V303-000220	WASHER	1	T0.3	C
21		A607-000030	ROD,PUSH	2		C
22		P100-004760	COVER,CAM GEAR	1		
23		V109-000040	GASKET	1		A
24		V804-000050	BOLT, TORX 4	4	TB-4*12 10.9	C

Class : Consumable class

A:Fast moving parts B:Semi-fast moving parts C:Slow moving parts D:Order only as needed

MAGNETO



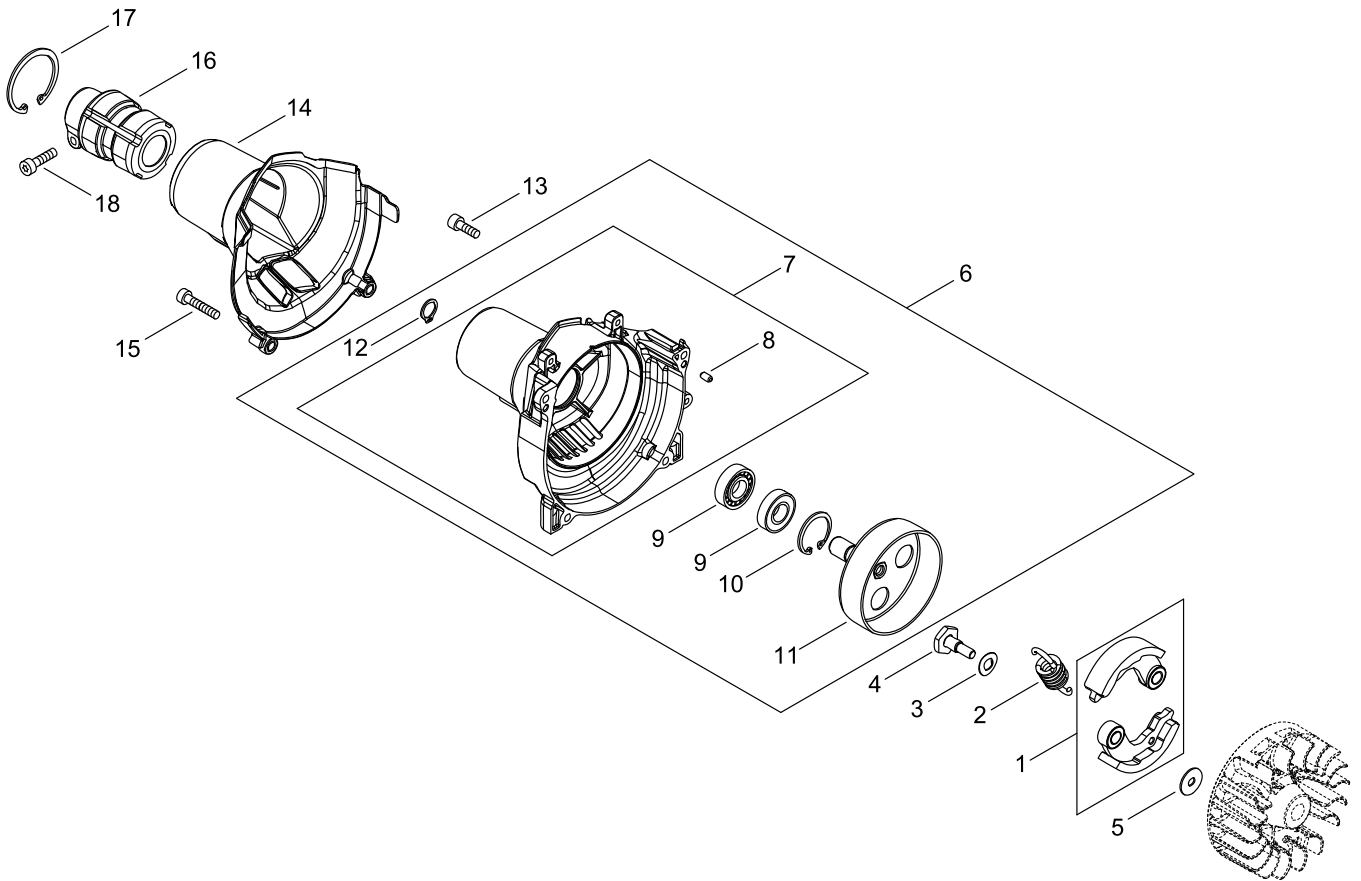
MAGNETO

Key No.	LV (+)	Parts Number	Parts Description	Qty	Standard	Class
1		A409-001340	ROTOR, MAGNETO	1	ID#R10033	C
2		A411-001770	COIL, IGNITION	1	ID#A10065	C
3		900515-00008	NUT, FLANGE	1	8	
4		E106-000240	GUIDE,AIR	1		C
5		V485-003020	LEAD	1	L275 LA105/CB104	C
6		V203-002400	BOLT,5	2	5*20-12.9	C
7		93115-03010	KEY, WOODRUFF	1	3*10	
8		A425-000040	SPARKPLUG	1	NGK CMR5H	A
9		A427-000190	CAP,SPARK PLUG	1		C
10		A426-000010	TERMINAL,SPARKPLUG	1		C
11		V485-003010	LEAD	1	L265 CB104	C

Class : Consumable class

A:Fast moving parts B:Semi-fast moving parts C:Slow moving parts D:Order only as needed

CLUTCH



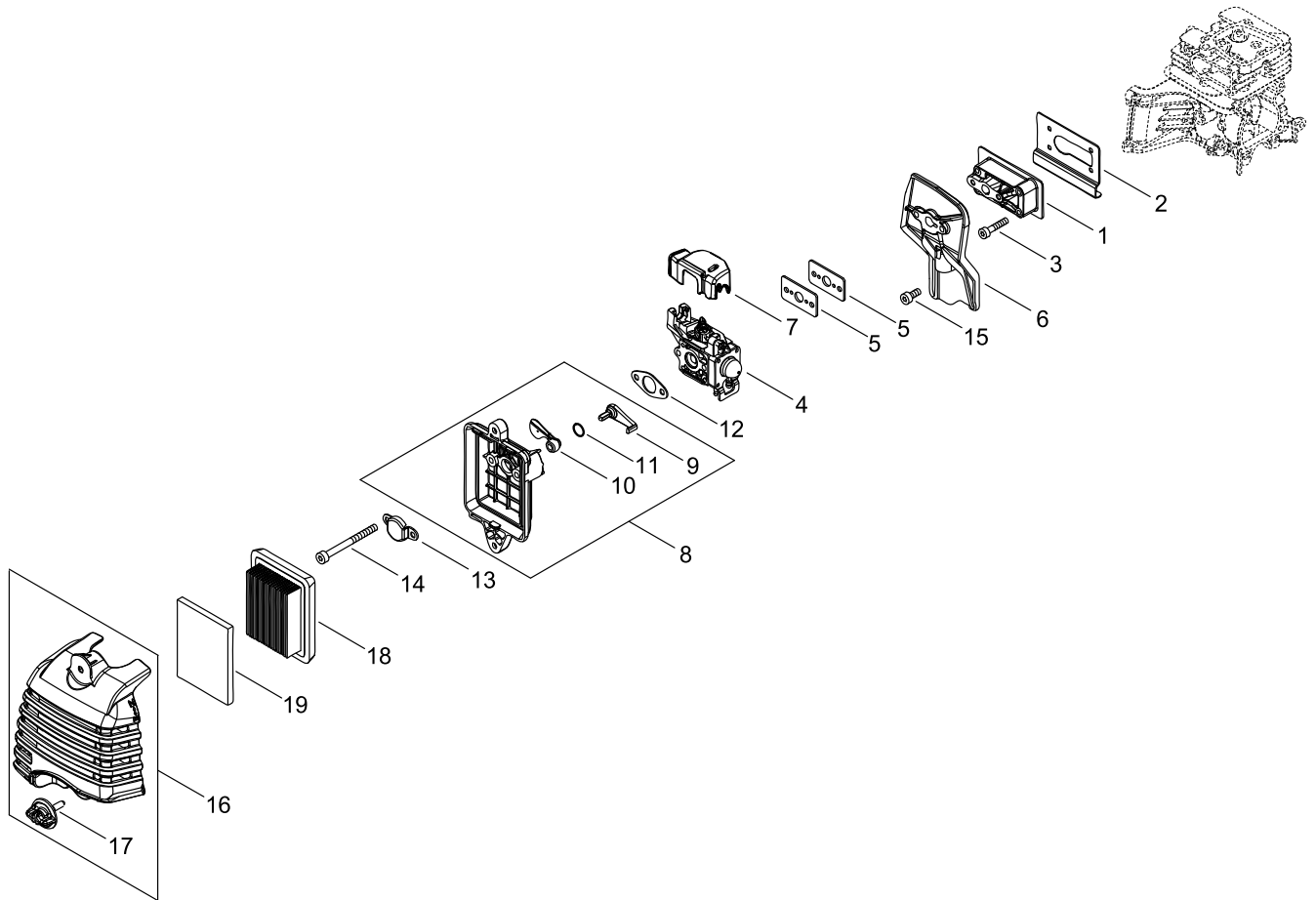
CLUTCH

Key No.	LV (+)	Parts Number	Parts Description	Qty	Standard	Class
1		P021-046970	CLUTCH SHOE SET	1		
2		A566-000320	SPRING, CLUTCH	1	3.2 311N	B
3		175049-56030	WASHER	2	8.5*16*0.5	C
4		A557-000150	SHAFT, CLUTCH	2		B
5		175048-05530	WASHER (I)	2	6.2*19*1.0	C
6		P100-004780	COVER ASY, FAN	1		
7	+	P100-010620	COVER,FAN	1		
8	++	900330-40080	ROLLER	2	4*8	
9	+	94018-46001	BEARING, BALL	2	6001LB	
10	+	92419-28000	RETAINING RING, INTERNAL	1	IRTW-28	
11	+	A556-001810	DRUM, CLUTCH	1		B
12	+	900701-00012	RETAINING RING, EXTERNAL	1	CS-12	
13		V805-000150	BOLT, TORX 5	2	TB-5*16 10.9	C
14		A413-000100	BOOT	1		C
15		V805-000170	BOLT, TORX 5	2	TB-5*25 10.9	C
16		A575-000640	FIXTURE, MAIN PIPE	1		C
17		92424-42000	RETAINING RING, INTERNAL	1	CR-42	
18		V805-000170	BOLT, TORX 5	1	TB-5*25 10.9	C

Class : Consumable class

A:Fast moving parts B:Semi-fast moving parts C:Slow moving parts D:Order only as needed

AIR CLEANER, CARBURETOR



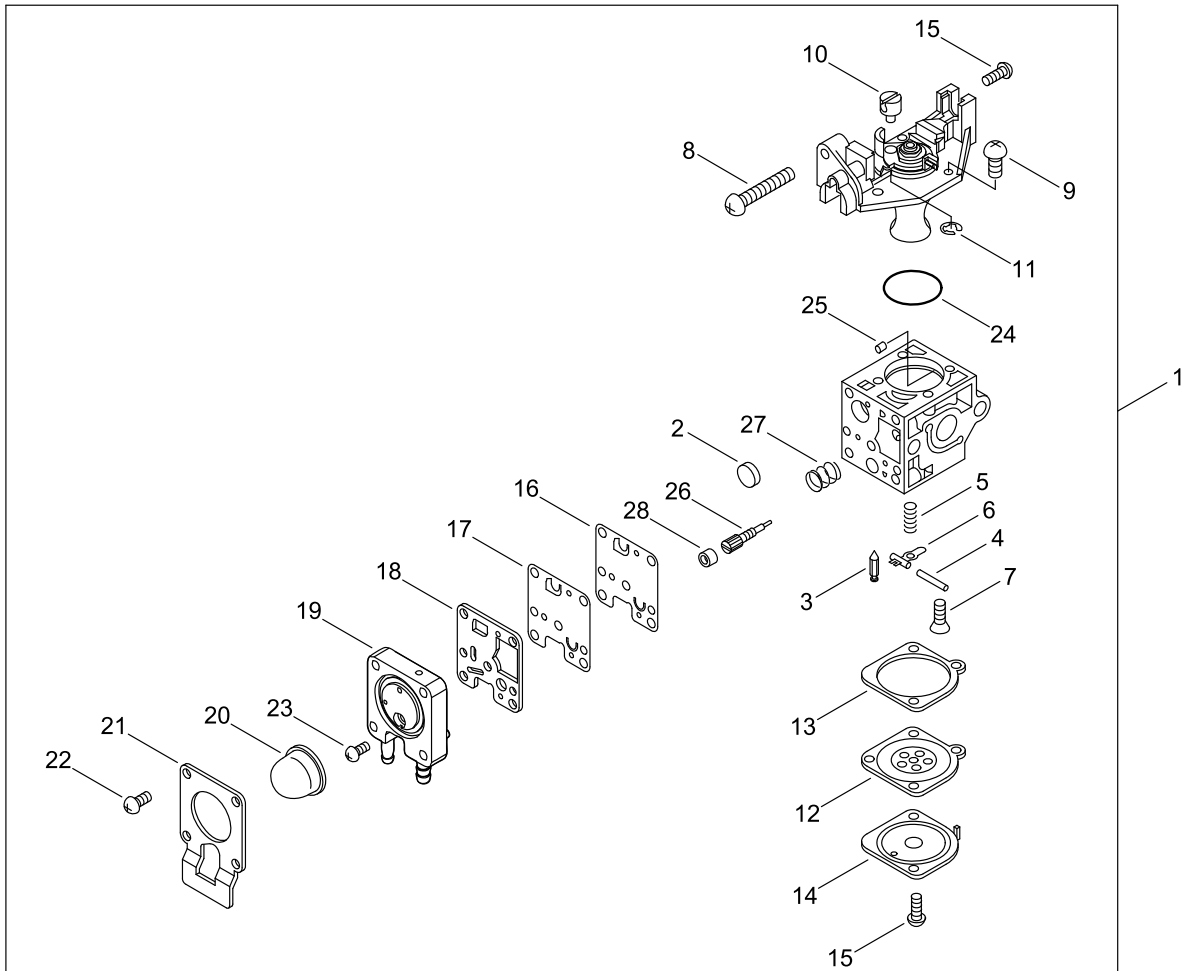
AIR CLEANER, CARBURETOR

Key No.	LV (+)	Parts Number	Parts Description	Qty	Standard	Class
1		A200-001190	INSULATOR, INTAKE	1		C
2		V103-001980	GASKET,INTAKE	1		A
3		V804-000120	BOLT, TORX 4	4	TB-4*25 10.9	C
4		A021-004820	CARBURETOR,DIAPHRAGM	1	IDYZ0004 110137A	B
5		V103-001990	GASKET,INTAKE	2		A
6		A209-001070	PLATE, INSULATOR	1		C
7		A127-000440	COVER,DUST	1		C
8		A023-000360	CASE,CLEANER	1		C
9	+	A242-000280	LEVER, CHOKE	1		C
10	+	A243-000380	SHUTTER, CHOKE	1		C
11	+	V581-000790	RING,O	1		A
12		V103-001970	GASKET,INTAKE	1		A
13		A244-000330	PLATE, PREVENT	1		C
14		V805-000100	BOLT, TORX 5	2	TB-5*65 10.9	C
15		V805-000140	BOLT, TORX 5	1	TB-5*12 10.9	C
16		P100-004790	CLEANER COVER ASY	1		
17	+	A235-000450	KNOB,CLEANER LID	2		C
18		A226-000361	ELEMENT, AIR FILTER	1	AFP-2010K-300	A
19		A226-002200	ELEMENT, AIR FILTER	1		A

Class : Consumable class

A:Fast moving parts B:Semi-fast moving parts C:Slow moving parts D:Order only as needed

CARBURETOR



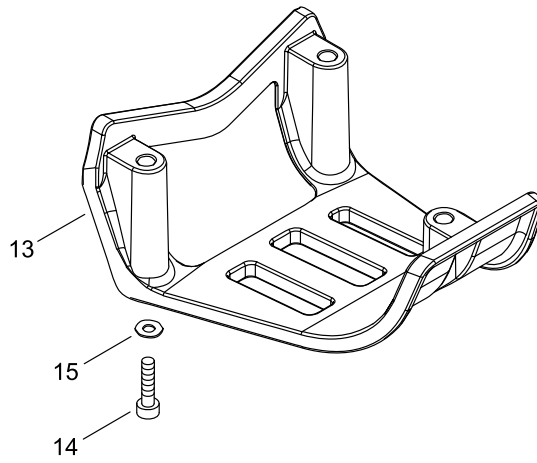
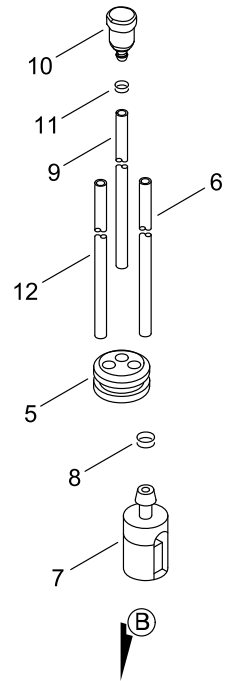
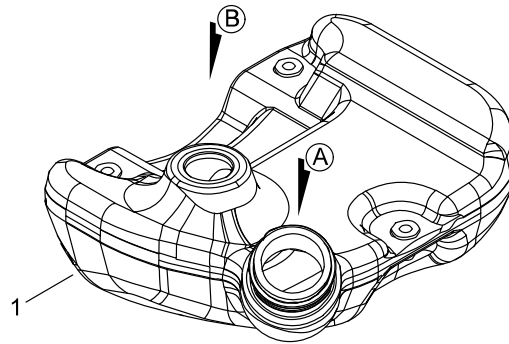
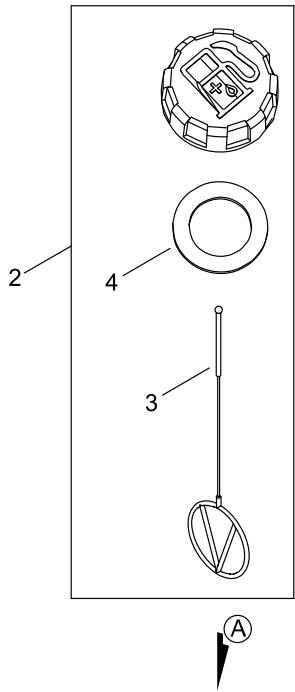
CARBURETOR

Key No.	LV (+)	Parts Number	Parts Description	Qty	Standard	Class
1		A021-004820	CARBURETOR,DIAPHRAGM	1	IDYZ0004 110137A	B
2	+	P005-000010	STRAINER	1		
3	+	125337-08260	VALVE, INLET NEEDLE	1		
4	+	125338-13930	PIN, METERING ARM	1		
5	+	125322-13930	SPRING, COIL	1		
6	+	125323-08260	ARM, VALVE	1		
7	+	125339-42030	SCREW	1		
8	+	P005-000100	SCREW,THROTTLEADJUST	1		
9	+	125344-13931	SCREW	3		
10	+	P005-001240	POST	1		
11	+	P005-000190	E-RING	1		
12	+	P005-003760	DIAPHRAGM ,METERING	1		
13	+	P005-000200	GASKET, METERING	1		A
14	+	125342-52130	COVER, DIAPHRAGM	1		
15	+	125344-52130	SCREW	3		
16	+	P005-003930	DIAPHRAGM, PUMP	1		
17	+	P005-003940	DIAPHRAGM, PUMP	1		
18	+	P005-000520	GASKET, PUMP	1		A
19	+	P005-004240	BASE, ASY PRIMER	1		
20	+	P005-003110	PUMP, PRIMER	1		
21	+	P005-000250	RETAINER	1		
22	+	P005-001900	SCREW	4		
23	+	P005-000270	SCREW	1		
24	+	P005-000280	O-RING	1		
25	+	P005-001000	ROLLER, GUIDE	1		
26	+	P005-003950	SCREW,MAIN MIXTURE	1		
27	+	P005-003960	SPRING, PUMP	1		
28	+	P005-001270	PLUG, AJUST SCREW	1		

Class : Consumable class

A:Fast moving parts B:Semi-fast moving parts C:Slow moving parts D:Order only as needed

FUEL TANK



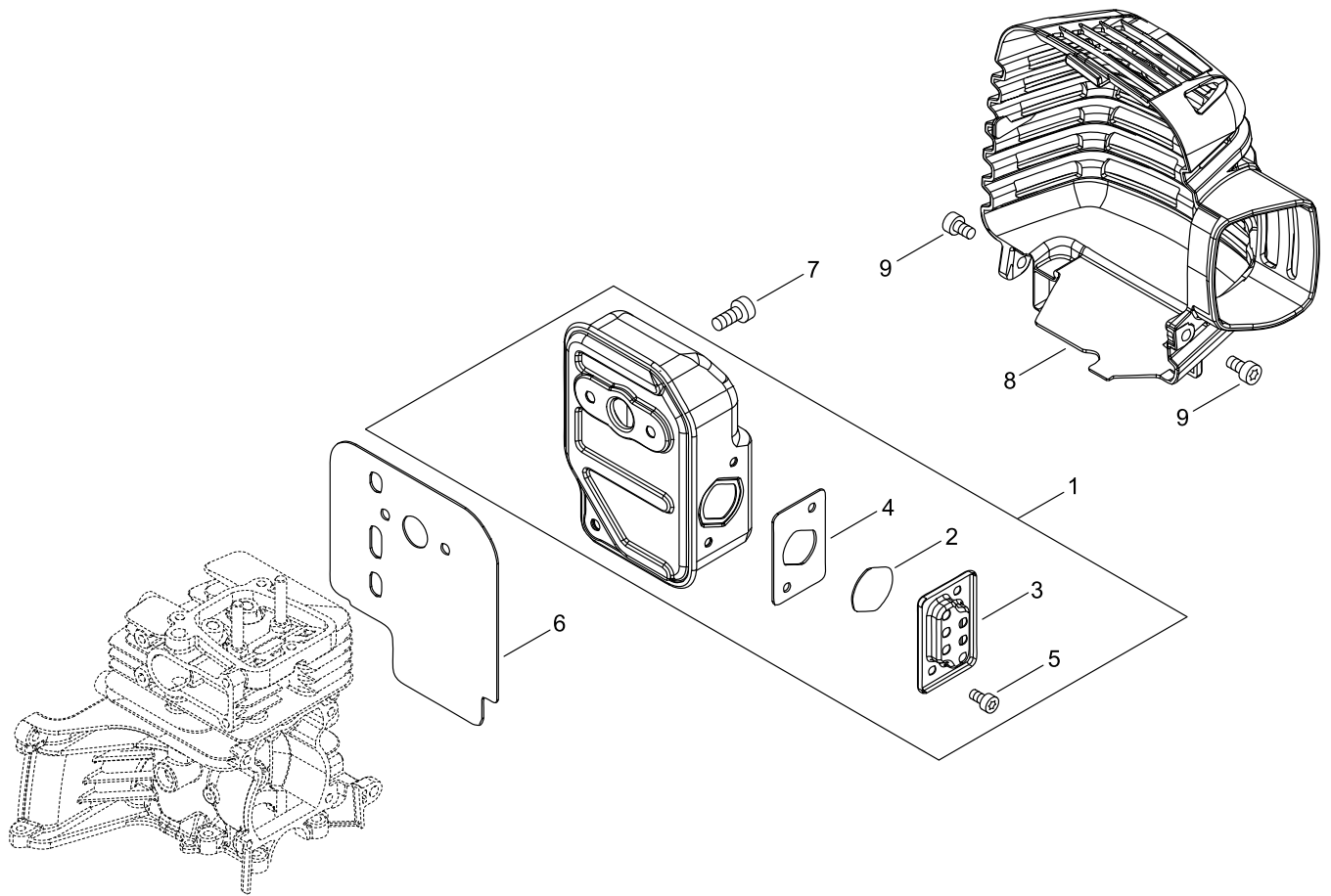
FUEL TANK

Key No.	LV (+)	Parts Number	Parts Description	Qty	Standard	Class
1		A350-002460	TANK, FUEL	1		C
2		P021-012211	CAP,FUEL ASY	1		
3	+	A365-000060	CONNECTOR,CAP	1	L=123	B
4	+	V107-000190	GASKET,FUEL CAP	1	37.9* T 2.2	A
5		132115-55931	GROMMET, FUEL	1	3 φ5	C
6		V471-004171	PIPE	1	3*5*235	C
7		A369-000420	STRAINER, FUEL	1	ES-16499	A
8		V490-000500	CLIP	1		C
9		V471-001501	PIPE	1	3*6*80	C
10		A356-000050	VALVE,CHECK	1		B
11		V490-000500	CLIP	1		C
12		V471-005290	PIPE	1	3*6*130	C
13		A175-000390	STAND	1		C
14		V805-000170	BOLT, TORX 5	3	TB-5*25 10.9	C
15		900603-00005	WASHER	3	5	

Class : Consumable class

A:Fast moving parts B:Semi-fast moving parts C:Slow moving parts D:Order only as needed

MUFFLER



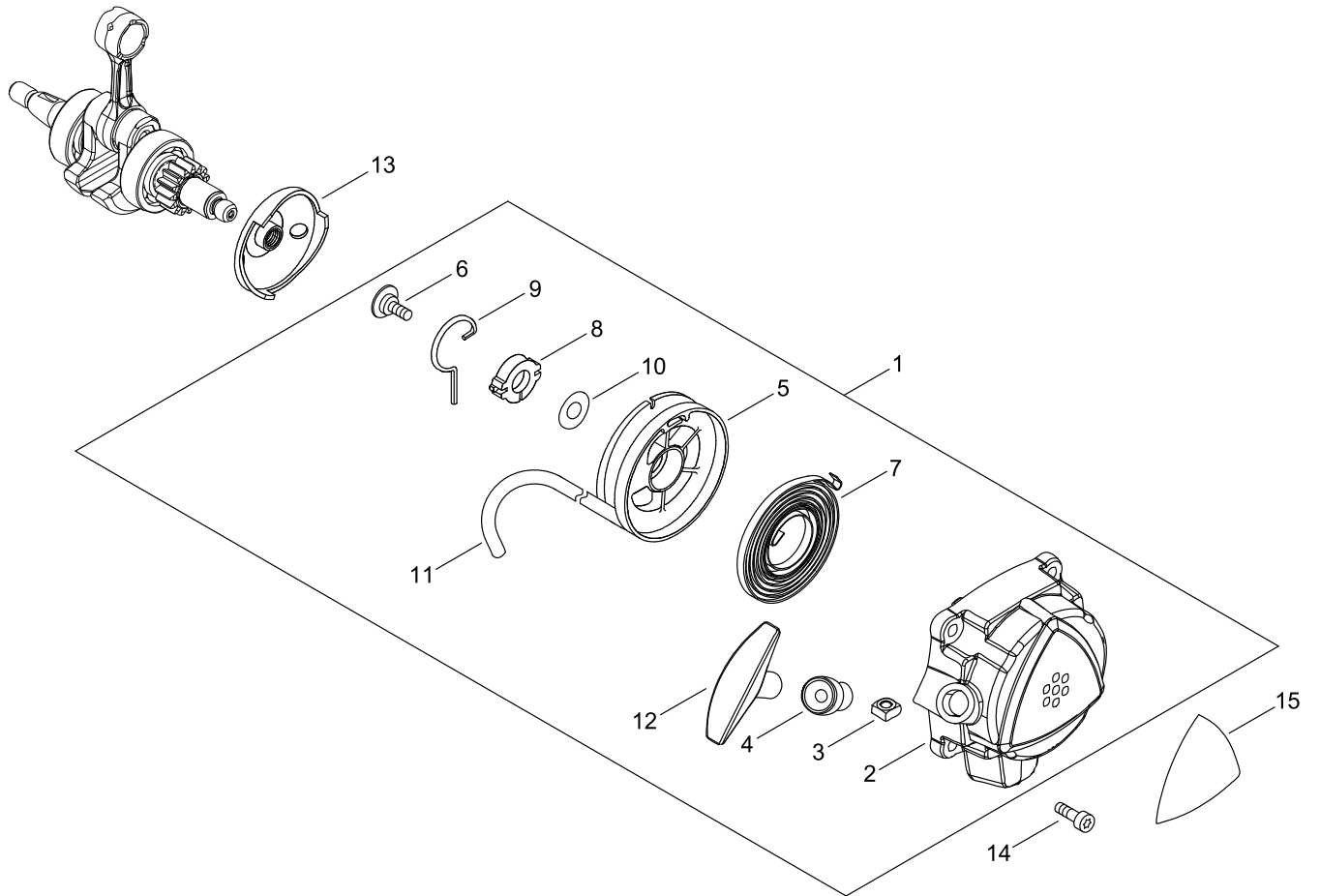
MUFFLER

Key No.	LV (+)	Parts Number	Parts Description	Qty	Standard	Class
1		P100-004810	MUFFLER ASY	1		
2	+	A310-000520	SCREEN, ARRESTOR	1		B
3	+	A313-002070	GUIDE, EXHAUST	1	ID#2240	C
4	+	V104-002360	GASKET,EXHAUST	1		A
5	+	V804-000030	BOLT, TORX 4	2	TB-4*8 10.9	C
6		V104-002370	GASKET,EXHAUST	1	T1.0	A
7		V805-000250	BOLT, TORX 5	3	TB-5*16 12.9	C
8		A320-001280	COVER,MUFFLER	1		C
9		V805-000140	BOLT, TORX 5	2	TB-5*12 10.9	C

Class : Consumable class

A:Fast moving parts B:Semi-fast moving parts C:Slow moving parts D:Order only as needed

RECOIL STARTER, PULLY



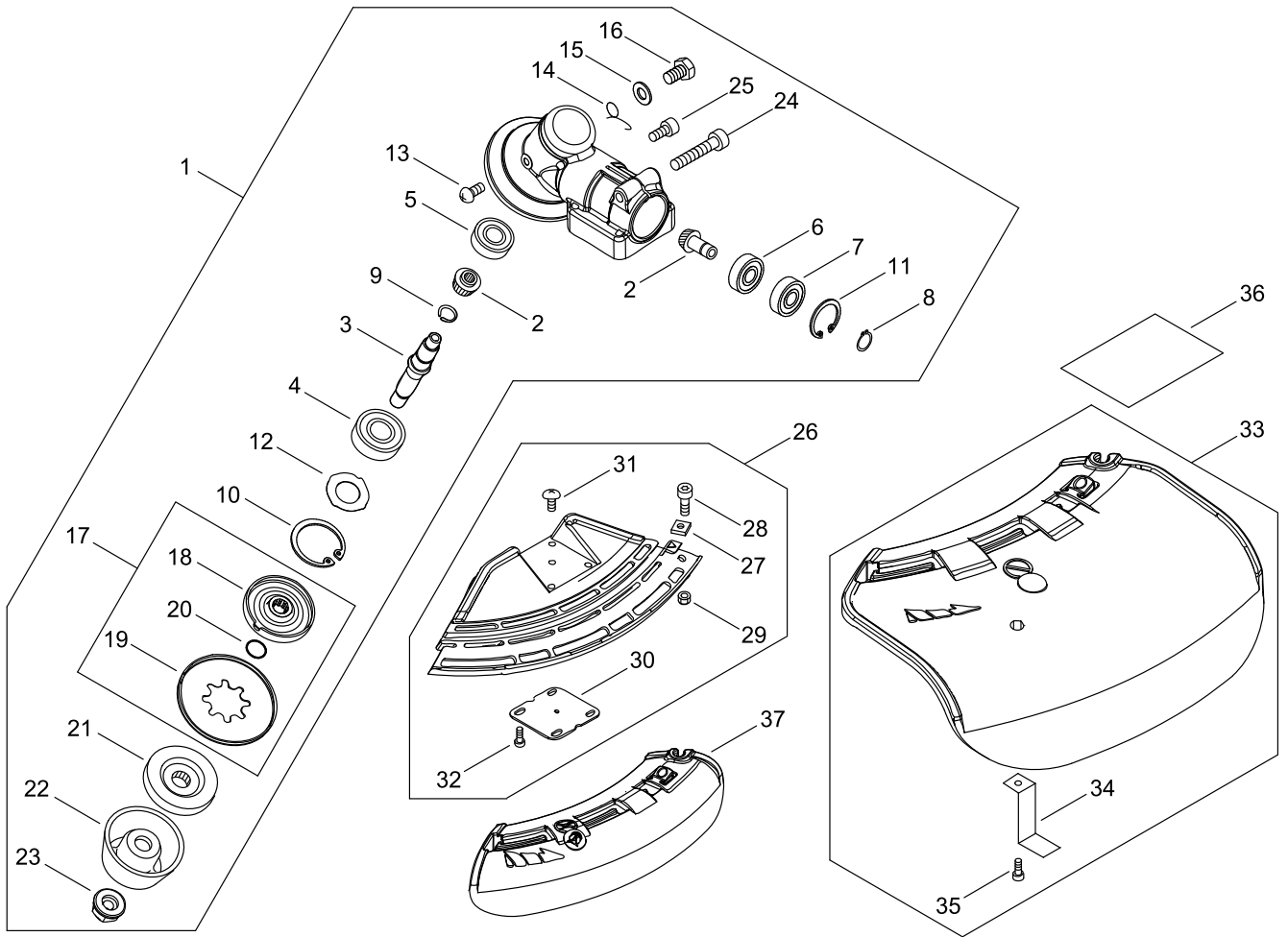
RECOIL STARTER, PULLY

Key No.	LV (+)	Parts Number	Parts Description	Qty	Standard	Class
1		A051-003330	STARTER,RECOIL ASY	1		B
2	+	P022-049760	CASE, STARTER	1		
3	+	P022-022010	NUT	1		
4	+	P022-045770	GUIDE, ROPE	1		
5	+	P022-049770	DRUM, STARTER	1		
6	+	177236-61830	SCREW	1		
7	+	177220-42030	SPRING, REWIND	1		
8	+	P022-049780	COLLAR	1		
9	+	P022-049790	SWING ARM	1		
10	+	177214-41030	WASHER	1		
11	+	P022-049800	ROPE, STARTER	1		
12	+	177228-44330	GRIP, STARTER	1		
13		A052-000300	STARTER PULLEY	1		C
14		V805-000140	BOLT, TORX 5	4	TB-5*12 10.9	C
15		X547-003280	LABEL,ECHO	1	ECHO+SRM-3610T	D

Class : Consumable class

A:Fast moving parts B:Semi-fast moving parts C:Slow moving parts D:Order only as needed

GEAR CASE, SHIELD



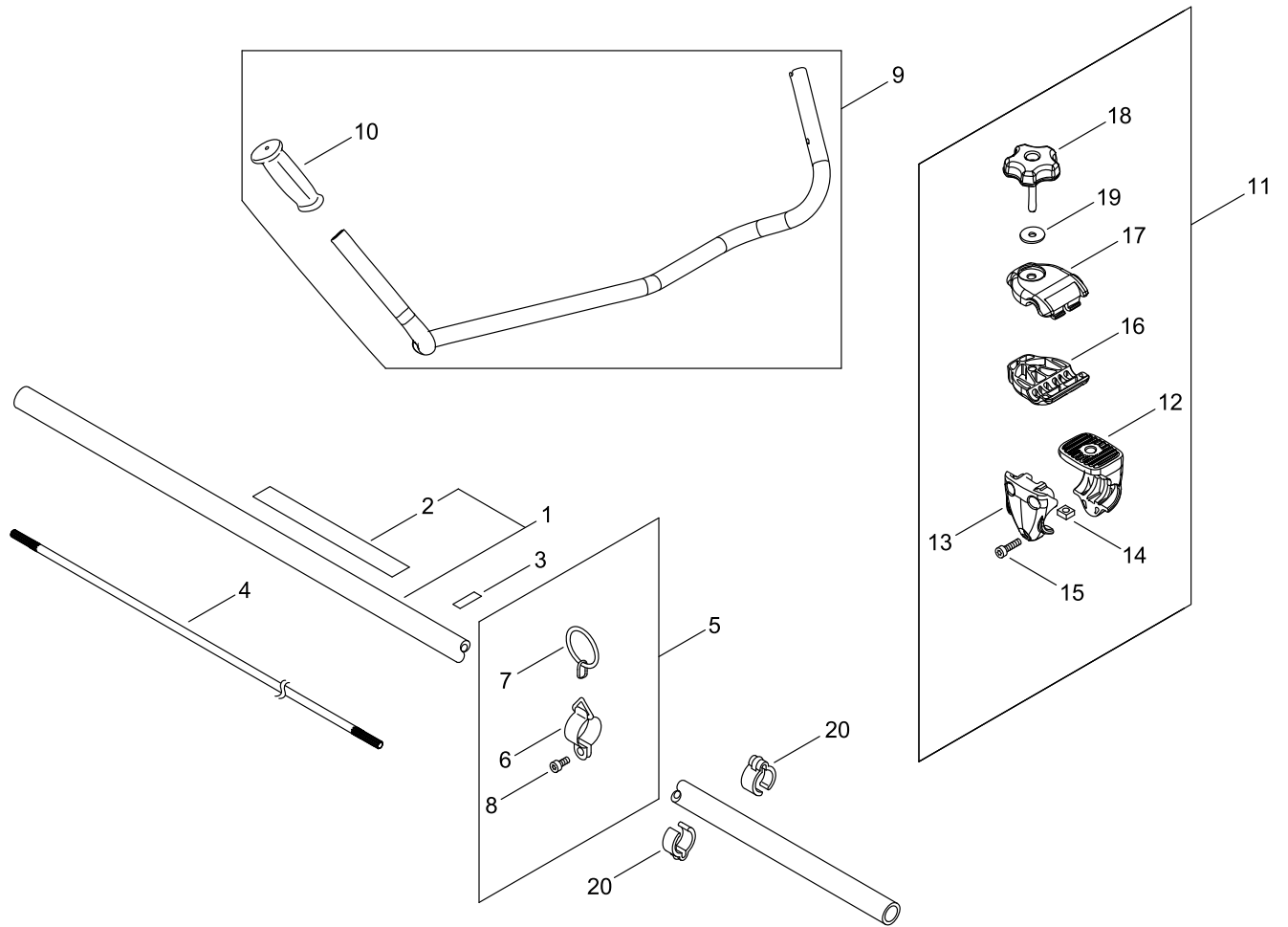
GEAR CASE, SHIELD

Key No.	LV (+)	Parts Number	Parts Description	Qty	Standard	Class
1		P100-004840	CASE,GEAR ASY	1		
2	+	V000-000260	GEAR SET, BEVEL	1		D
3	+	C534-001080	SHAFT, GEAR	1		D
4	+	900812-06201	BEARING, BALL	1	6201LLU(DDU)	
5	+	900810-00629	BEARING, BALL	1	629	
6	+	900800-00609	BEARING, BALL	1	609	
7	+	900803-00609	BEARING, BALL	1	609Z	
8	+	900701-00009	RETAINING RING, EXTERNAL	1	CS-9	
9	+	900706-00012	RETAINING RING, EXTERNAL	1	WR-12	
10	+	900702-00032	RETAINING RING, INTERNAL	1	CR-32	
11	+	900702-00025	RETAINING RING, INTERNAL	1	CR-25	
12	+	V340-000180	WASHER	1		C
13	+	900220-04006	SCREW	1	4*6	
14	+	V452-001310	SPRING,TORSION	1		B
15	+	900603-50008	WASHER	1	8.5*18*0.8T	C
16	+	610434-50031	BOLT 8* 8	1	M8*8	C
17	+	610313-52932	FIXTURE,BLADE	1		C
18	++	610313-52132	FIXTURE,BLADE	1		C
19	++	610352-56830	PLATE, CUP	1		C
20	++	900720-00012	O-RING	1	P-12	
21	+	610314-52130	PLATE, ADAPTER (L)	1		C
22	+	699229-56830	PLATE, COVER	1		C
23	+	610320-52130	NUT 10	1		C
24	+	V806-000020	BOLT, TORX 6	1	TB-6*25 10.9	C
25	+	V805-000130	BOLT, TORX 5	1	TB-5*10 10.9	C
26		P021-050810	SHIELD BLADE ASY	1		
27	+	900565-00005	NUT, SQUARE	1	5	
28	+	V805-000170	BOLT, TORX 5	1	TB-5*25 10.9	C
29	+	900562-00005	NUT, LOCK	1	5	
30	+	C552-000200	PLATE, SHIELD	1		D
31	+	91316-04010	SCREW	1	4*10	
32	+	V805-000260	BOLT, TORX 5	4	TB5*25 10.9	C
33		P021-043981	SHIELD ASY, BLADE	1		
34	+	C554-000001	KNIFE,CORD	1		B
35	+	V805-000150	BOLT, TORX 5	1	TB-5*16 10.9	C
36		X530-000560	LABEL,EYE CATCHER	1	HIGH TORQUE	D
37		C550-000541	SHIELD, BLADE	1		B

Class : Consumable class

A:Fast moving parts B:Semi-fast moving parts C:Slow moving parts D:Order only as needed

MAIN PIPE, HANDLE



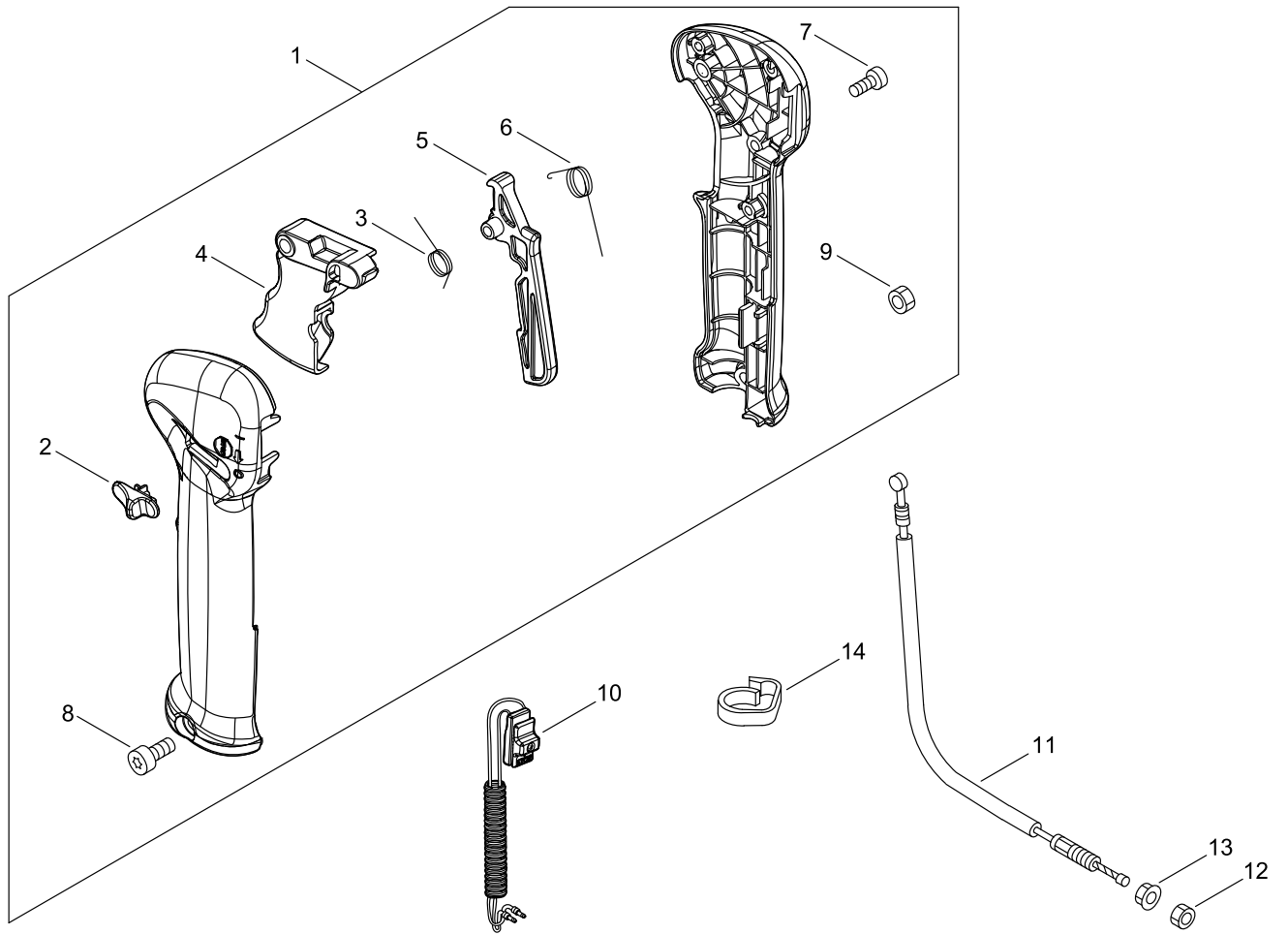
MAIN PIPE, HANDLE

Key No.	LV (+)	Parts Number	Parts Description	Qty	Standard	Class
1		P021-049000	MAIN PIPE ASY	1		
2	+	890617-43130	LABEL,CAUTION	1		D
3		890152-04930	LABEL, CAUTION	1		D
4		610011-25530	SHAFT, DRIVE	1		C
5		P021-016221	HOOK ASS'Y	1		
6	+	301205-21331	HOOK	1		C
7	+	301015-05330	HOOK, BAND	1		C
8	+	V805-000140	BOLT, TORX 5	1	TB-5*12 10.9	C
9		P100-003860	HANDLE ASY	1		
10	+	C403-000031	GRIP,HANDLE	1		C
11		P021-016232	FIXTURE,ASY HANDLE	1		
12	+	351312-52131	BRACKET, HANDLE (U)	1		D
13	+	351313-52130	BRACKET, HANDLE (C)	1		D
14	+	900565-50008	NUT	1	8*1.25	
15	+	V805-000170	BOLT, TORX 5	3	TB-5*25 10.9	C
16	+	C423-000043	FIXTURE,HANDLE	1		D
17	+	C423-000030	FIXTURE,HANDLE	1		D
18	+	V299-000110	KNOB,FASTENER	1		C
19	+	605014-54230	WASHER	1		C
20		224924-52130	CLIP	2	25MM	C

Class : Consumable class

A:Fast moving parts B:Semi-fast moving parts C:Slow moving parts D:Order only as needed

THROTTLE



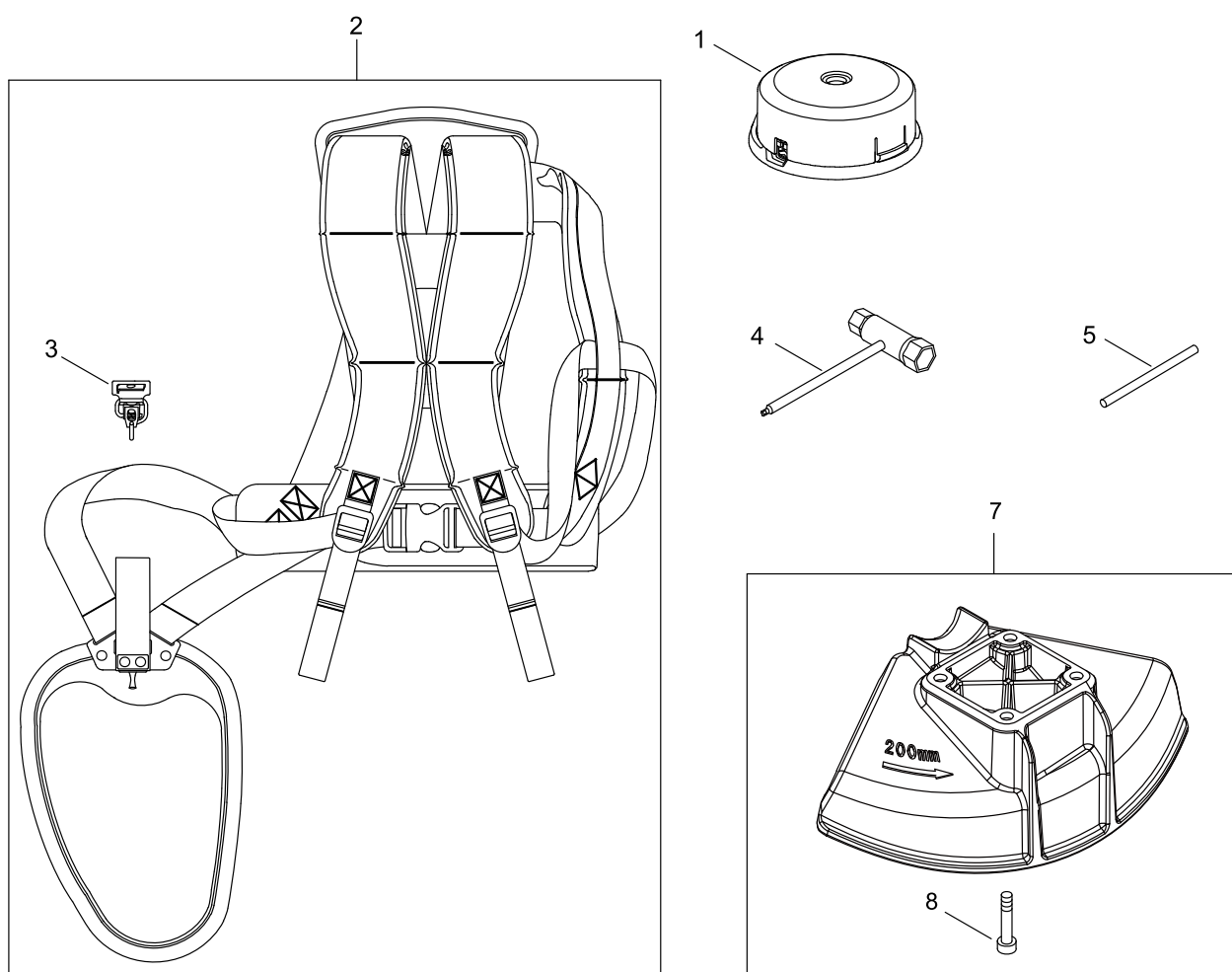
THROTTLE

Key No.	LV (+)	Parts Number	Parts Description	Qty	Standard	Class
1		P100-004010	THROTTLE ASY	1		
2	+	C463-000020	KNOB, LATCH	1		C
3	+	V452-000360	SPRING,TORSION	1		B
4	+	C450-000270	CONTROL, THROTTLE	1		C
5	+	C460-000111	LOCKOUT, THROTTLE	1	70MM	C
6	+	V452-000350	SPRING,TORSION	1		B
7	+	V804-000010	BOLT, TORX 4	3	TT-4*16 DG 10.9	C
8	+	V805-000050	BOLT, TORX 5	1	TB-5*30 10.9	C
9	+	900500-00005	NUT	1	5	
10		P100-004830	SWITCH,ON OFF	1		
11		V430-005140	CABLE,BOWDEN	1	OUT:960 IN:87	B
12		900502-00006	NUT	1	6	
13		900518-00006	NUT, FLANGE	1	6	
14		159112-09961	CLIP	1		C

Class : Consumable class

A:Fast moving parts B:Semi-fast moving parts C:Slow moving parts D:Order only as needed

ACCESSORIES



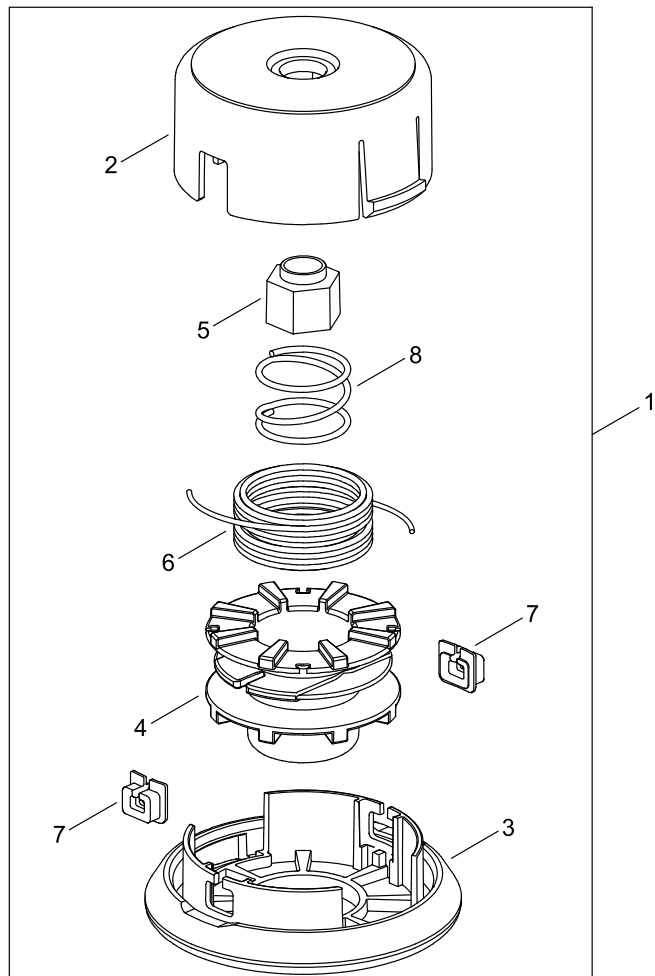
ACCESSORIES

Key No.	LV (+)	Parts Number	Parts Description	Qty	Standard	Class
1		X047-001180	CUTTER,ASM LINE	1	Z-5/M10L	A
2		C062-000511	HARNESS, SHOULDER	1		B
3	+	P021-042910	HOOK ASSY	1		
4		X601-000020	TOOL,BOX SPANNER	1	19*16 L200	D
5		X606-000080	TOOL,BAR	1	5*120	D
7		P100-008860	SAW BLADE SHIELD	1		
8	+	V805-000410	BOLT, TORX 5	4	TB-5*20 10.9	C

Class : Consumable class

A:Fast moving parts B:Semi-fast moving parts C:Slow moving parts D:Order only as needed

NYLON LINE CUTTER



NYLON LINE CUTTER

Key No.	LV (+)	Parts Number	Parts Description	Qty	Standard	Class
1		X047-001180	CUTTER,ASM LINE	1	Z-5/M10L	A
2	+	P022-035000	HOUSING	1		
3	+	P022-010410	COVER	1		
4	+	P022-010400	BOBBIN	1		
5	+	P022-023180	NUT	1		
6	+	P022-010380	NYLON CODE	1		
7	+	P022-000710	EYELET	2	T4	
8	+	P022-010370	SPRING	1		

Class : Consumable class

A:Fast moving parts B:Semi-fast moving parts C:Slow moving parts D:Order only as needed

NUMERICAL PARTS INDEX

Part No	Part description	Page	Part No	Part description	Page	Part No	Part description	Page
125322-13930	SPRING, COIL	12	900701-00009	RETAINING RING, EXTERNAL	20	A320-001280	COVER,MUFFLER	16
125323-08260	ARM, VALVE	12	900701-00012	RETAINING RING, EXTERNAL	8	A350-002460	TANK, FUEL	14
125337-08260	VALVE, INLET NEEDLE	12		A356-000050		VALVE,CHECK	14	
125338-13930	PIN, METERING ARM	12	900702-00025	RETAINING RING, INTERNAL	20	A365-000060	CONNECTOR,CAP	14
125339-42030	SCREW	12	900702-00032	RETAINING RING, INTERNAL	20	A369-000420	STRAINER, FUEL	14
125342-52130	COVER, DIAPHRAGM	12		A409-001340		ROTOR, MAGNETO	6	
125344-13931	SCREW	12	900706-00012	RETAINING RING, EXTERNAL	20	A411-001770	COIL, IGNITION	6
125344-52130	SCREW	12	900720-00012	O-RING	20	A413-000100	BOOT	8
132115-55931	GROMMET, FUEL	14		900800-00609		BEARING, BALL	20	A425-000040
159112-09961	CLIP	24	900803-00609	BEARING, BALL	20	A426-000010	TERMINAL,SPARKPLUG	6
175048-05530	WASHER (I)	8	900810-00629	BEARING, BALL	20	A427-000190	CAP,SPARK PLUG	6
175049-56030	WASHER	8	900812-06201	BEARING, BALL	20	A429-000220	COVER,CAP	2
177214-41030	WASHER	18	91316-04010	SCREW	20	A556-001810	DRUM, CLUTCH	8
177220-42030	SPRING, REWIND	18	91341-03006	SCREW	2	A557-000150	SHAFT, CLUTCH	8
177228-44330	GRIP, STARTER	18	92419-28000	RETAINING RING, INTERNAL	8	A566-000320	SPRING, CLUTCH	8
177236-61830	SCREW	18		92424-42000		RETAINING RING, INTERNAL	8	A575-000640
224924-52130	CLIP	22	93115-03010	KEY, WOODRUFF	6	A600-000020	LIFTER	4
301015-05330	HOOK, BAND	22		94018-46001		BEARING, BALL	8	A603-000090
301205-21331	HOOK	22	A011-001530	CRANKSHAFT,ASY	2	A603-000100	VALVE	4
351312-52131	BRACKET, HANDLE (U)	22	A021-004820	CARBURETOR, DIAPHRAGM	10	A604-000030	SPRING,VALVE	4
351313-52130	BRACKET, HANDLE (C)	22		A021-004820		CARBURETOR, DIAPHRAGM	12	A606-000040
605014-54230	WASHER	22	A023-000360	CASE,CLEANER	10	A607-000030	ROD,PUSH	4
610011-25530	SHAFT, DRIVE	22	A051-003330	STARTER,RECOIL ASY	18	A610-000090	ARM,ROCKER	4
610313-52132	FIXTURE,BLADE	20	A052-000300	STARTER PULLEY	18	A622-000020	GEAR,CAM	4
610313-52932	FIXTURE,BLADE	20	A101-000730	RING, PISTON	2	C062-000511	HARNESS, SHOULDER	26
610314-52130	PLATE, ADAPTER (L)	20	A127-000440	COVER,DUST	10	C403-000031	GRIP,HANDLE	22
610320-52130	NUT 10	20	A137-000040	COVER,ROCKER ARM	4	C423-000030	FIXTURE,HANDLE	22
610352-56830	PLATE, CUP	20	A146-000020	WEIGHT,DECOMP	4	C423-000043	FIXTURE,HANDLE	22
610434-50031	BOLT 8* 8	20	A160-003390	COVER,CYLINDER	2	C450-000270	CONTROL, THROTTLE	24
699229-56830	PLATE, COVER	20	A160-003410	COVER,CYLINDER	2	C460-000111	LOCKOUT, THROTTLE	24
890152-04930	LABEL, CAUTION	22	A175-000390	STAND	14	C463-000020	KNOB, LATCH	24
890617-43130	LABEL,CAUTION	22	A200-001190	INSULATOR, INTAKE	10	C534-001080	SHAFT, GEAR	20
900220-04006	SCREW	20	A209-001070	PLATE, INSULATOR	10	C550-000541	SHIELD, BLADE	20
900330-40080	ROLLER	8	A211-000021	VALVE, REED	2	C552-000200	PLATE, SHIELD	20
900330-50280	ROLLER	4	A212-000021	GUIDE, VALVE	2	C554-000001	KNIFE,CORD	20
900500-00005	NUT	24	A226-000361	ELEMENT, AIR FILTER	10	C603-000240	PLATE	4
900502-00006	NUT	24	A226-002200	ELEMENT, AIR FILTER	10	E106-000240	GUIDE,AIR	6
900515-00008	NUT, FLANGE	6	A235-000450	KNOB,CLEANER LID	10	P005-000010	STRAINER	12
900518-00006	NUT, FLANGE	24	A242-000280	LEVER, CHOKE	10	P005-000100	SCREW, THROTTLEADJUST	12
900562-00005	NUT, LOCK	20	A243-000380	SHUTTER, CHOKE	10	P005-000190	E-RING	12
900565-00005	NUT, SQUARE	20	A244-000330	PLATE, PREVENT	10	P005-000200	GASKET, METERING	12
900565-50008	NUT	22	A310-000520	SCREEN, ARRESTOR	16	P005-000250	RETAINER	12
900603-00005	WASHER	14	A313-002070	GUIDE, EXHAUST	16	P005-000270	SCREW	12
900603-50008	WASHER	20				P005-000280	O-RING	12

NUMERICAL PARTS INDEX

Part No	Part description	Page	Part No	Part description	Page	Part No	Part description	Page
P005-000520	GASKET, PUMP	12	P100-008860	SAW BLADE SHIELD	26	V805-000140	BOLT, TORX 5	2
P005-001000	ROLLER, GUIDE	12	P100-010620	COVER,FAN	8	V805-000140	BOLT, TORX 5	10
P005-001240	POST	12	V000-000260	GEAR SET, BEVEL	20	V805-000140	BOLT, TORX 5	16
P005-001270	PLUG, AJUST SCREW	12	V103-001970	GASKET,INTAKE	10	V805-000140	BOLT, TORX 5	18
P005-001900	SCREW	12	V103-001980	GASKET,INTAKE	10	V805-000140	BOLT, TORX 5	22
P005-003110	PUMP, PRIMER	12	V103-001990	GASKET,INTAKE	10	V805-000150	BOLT, TORX 5	8
P005-003760	DIAPHRAGM ,METERING	12	V104-002360	GASKET,EXHAUST	16	V805-000150	BOLT, TORX 5	20
P005-003930	DIAPHRAGM, PUMP	12	V104-002370	GASKET,EXHAUST	16	V805-000170	BOLT, TORX 5	8
P005-003940	DIAPHRAGM, PUMP	12	V107-000190	GASKET,FUEL CAP	14	V805-000170	BOLT, TORX 5	14
P005-003950	SCREW,MAIN MIXTURE	12	V109-000040	GASKET	4	V805-000170	BOLT, TORX 5	20
P005-003960	SPRING, PUMP	12	V109-000340	GASKET	4	V805-000170	BOLT, TORX 5	22
P005-004240	BASE, ASY PRIMER	12	V203-002400	BOLT,5	6	V805-000250	BOLT, TORX 5	2
P021-012211	CAP,FUEL ASY	14	V252-000930	SCREW,4	4	V805-000250	BOLT, TORX 5	16
P021-016221	HOOK ASS'Y	22	V263-000500	NUT,5	4	V805-000260	BOLT, TORX 5	20
P021-016232	FIXTURE,ASY HANDLE	22	V299-000110	KNOB,FASTENER	22	V805-000410	BOLT, TORX 5	26
P021-042910	HOOK ASSY	26	V303-000220	WASHER	4	V806-000020	BOLT, TORX 6	20
P021-043981	SHIELD ASY, BLADE	20	V307-000580	WASHER,CIRCULAR 10	2	X047-001180	CUTTER,ASM LINE	26
P021-046970	CLUTCH SHOE SET	8	V340-000180	WASHER	20	X047-001180	CUTTER,ASM LINE	28
P021-049000	MAIN PIPE ASY	22	V353-000720	COLLAR,5	4	X502-000390	LABEL,ECHO	2
P021-050810	SHIELD BLADE ASY	20	V392-000030	PLATE	4	X524-001901	LABEL	2
P022-000710	EYELET	28	V430-005140	CABLE,BOWDEN	24	X530-000560	LABEL,EYE CATCHER	20
P022-010370	SPRING	28	V452-000350	SPRING,TORSION	24	X530-000590	LABEL,EYE CATCHER	2
P022-010380	NYLON CODE	28	V452-000360	SPRING,TORSION	24	X547-003280	LABEL,ECHO	18
P022-010400	BOBBIN	28	V452-001310	SPRING,TORSION	20	X601-000020	TOOL,BOX SPANNER	26
P022-010410	COVER	28	V452-001800	SPRING,TORSION	4	X606-000080	TOOL,BAR	26
P022-022010	NUT	18	V471-001501	PIPE	14			
P022-023180	NUT	28	V471-004171	PIPE	14			
P022-035000	HOUSING	28	V471-005290	PIPE	14			
P022-045770	GUIDE, ROPE	18	V485-003010	LEAD	6			
P022-049760	CASE, STARTER	18	V485-003020	LEAD	6			
P022-049770	DRUM, STARTER	18	V490-000500	CLIP	14			
P022-049780	COLLAR	18	V505-000011	SEAL,OIL 12	2			
P022-049790	SWING ARM	18	V505-000020	SEAL,OIL 12	2			
P022-049800	ROPE, STARTER	18	V555-000010	BEARING,NEEDLE 10	2			
P100-003860	HANDLE ASY	22	V580-000010	RING,END	2			
P100-004010	THROTTLE ASY	24	V581-000790	RING,O	10			
P100-004730	CYL. CRANKCASE SET	2	V608-000000	PIN,ENG 10	2			
P100-004740	PISTON KIT	2	V804-000010	BOLT, TORX 4	24			
P100-004750	CAM GEAR ASY	4	V804-000030	BOLT, TORX 4	16			
P100-004760	COVER,CAM GEAR	4	V804-000040	BOLT, TORX 4	4			
P100-004780	COVER ASY, FAN	8	V804-000050	BOLT, TORX 4	4			
P100-004790	CLEANER COVER ASY	10	V804-000120	BOLT, TORX 4	10			
P100-004810	MUFFLER ASY	16	V805-000050	BOLT, TORX 5	24			
P100-004830	SWITCH,ON OFF	24	V805-000100	BOLT, TORX 5	10			
P100-004840	CASE,GEAR ASY	20	V805-000130	BOLT, TORX 5	20			