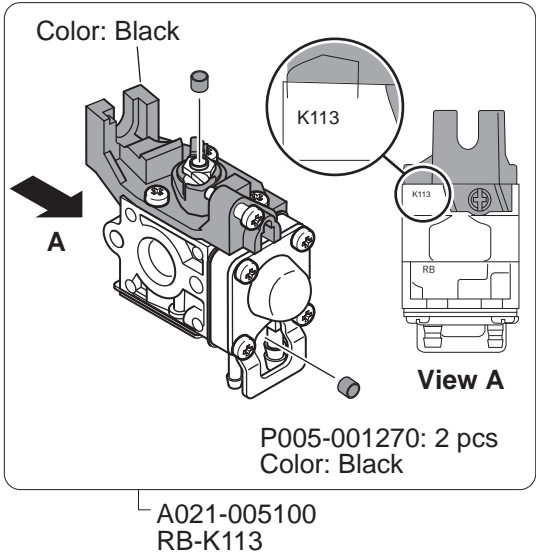
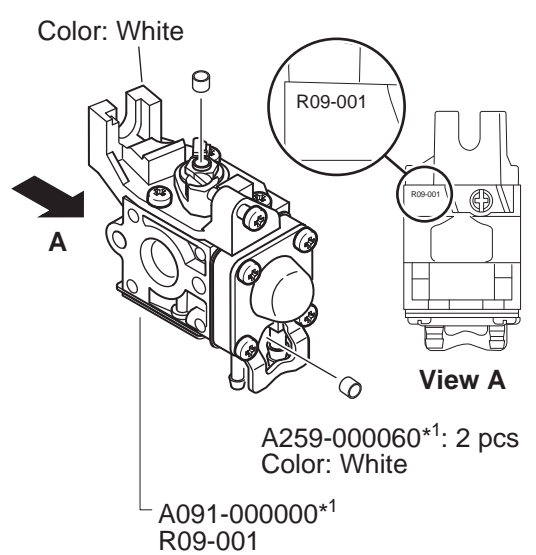


TECHNICAL INFORMATION

SUBJECT: Carburetor on ECHO GT-222ES, SRM-222ES, shindaiwa C226S, F226S and T226S

Number: Y2019-674(1/2)
Issued: Oct. 31, 2019
Revised: Nov. 30, 2020

Changed carburetor assembly.		
GT-222ES	Serial Number 38005957 and before	Serial Number 38005958 and after
SRM-222ES	Serial Number 38007977 and before	Serial Number 38007978 and after
C226S	Serial Number 38001100 and before	Serial Number 38001101 and after
F226S	Serial Number 38001670 and before	Serial Number 38001671 and after
T226S	Serial Number 38001650 and before	Serial Number 38001651 and after
Limiter plug Carburetor assembly	 <p>Color: Black</p> <p>K113</p> <p>View A</p> <p>P005-001270: 2 pcs Color: Black</p> <p>A021-005100 RB-K113</p>	 <p>Color: White</p> <p>R09-001</p> <p>View A</p> <p>A259-000060*1: 2 pcs Color: White</p> <p>A091-000000*1 R09-001</p>
Carburetor assembly A091-000000*1 can be used on the unit before this change.		

*1 Install limiter plug A259-000060 (2 pcs) in carburetor assembly A091-000000 when using carburetor assembly on unit.

Carburetor adjustment initial setting

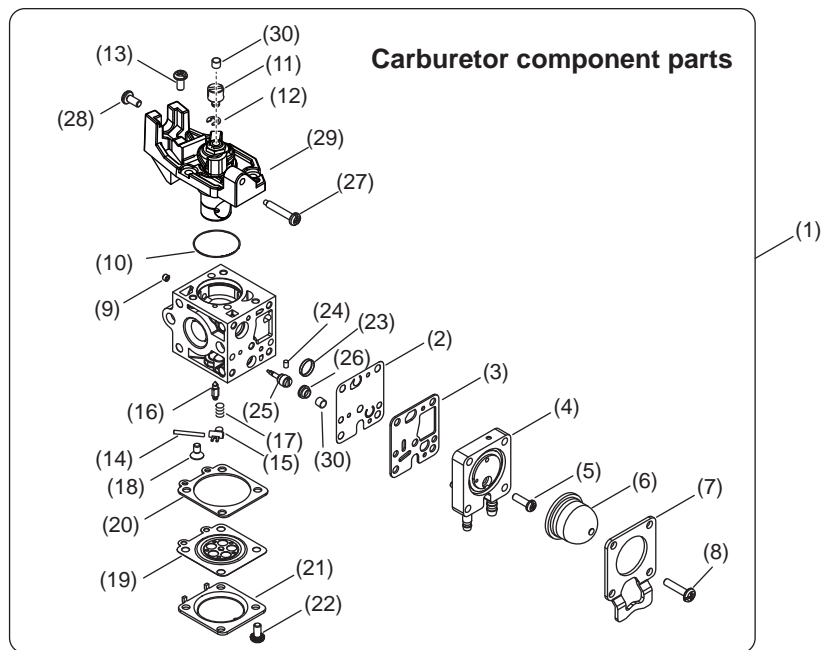
Carburetor type		A021-005100 (RB-K113)	A091-000000 (R09-001)
H mixture needle	turn out	1 1/8	3/4
L mixture needle	turn out	3 7/8	3 1/4
Throttle adjust screw	turn in*2	7 3/4	6 1/4

*2 Turn TAS(Throttle adjust screw) clockwise until its head touches boss. Then turn TAS counterclockwise.

NOTE: For detailed carburetor adjustment, refer to SERVICE DATA.
 Carburetor adjustment procedures except for initial setting are the same.

(Continued)

TECHNICAL INFORMATION Number: Y2019-674 (2/2)



Before change (Carburetor assembly: RB-K113)			
	Description	Part Number	Qty
(1)	Carburetor assembly	A021-005100	1
(2)	Pump diaphragm	P005-000510	1
(3)	Pump gasket	P005-000520	1
(4)	Base primer assy	P005-004240	1
(5)	Screw	P005-000270	1
(6)	Primer pump	P005-003110	1
(7)	Syringe retainer	P005-000250	1
(8)	Screw	P005-001900	4
(9)	Guide rotor	P005-001000	1
(10)	O-ring	P005-000280	1
(11)	Post	P005-001240	1
(12)	E-ring	P005-000190	1
(13)	Screw	125344-13931	3
(14)	Pin	125338-13930	1
(15)	Metering lever	125323-08260	1
(16)	Inlet needle valve	125337-08260	1
(17)	Metering spring	P005-002430	1
(18)	Screw	125339-42030	1
(19)	Metering diaphragm assy	P005-002230	1
(20)	Metering gasket	P005-000200	1
(21)	Metering cover	125342-52130	1
(22)	Screw	125344-52130	2
(23)	Strainer	P005-000010	1
(24)	Nil		
(25)	H mixture needle	P005-001260	1
(26)	Ball plug retainer	P005-001250	1
(27)	Throttle adjust screw	P005-000100	1
(28)	Screw	125344-52130	1
(29)	Rotor cover assy	P005-002460	1
(30)	Limiting plug	P005-001270	2

After change (Carburetor assembly: R09-001)			
	Description	Part Number	Qty
(1)	Carburetor assembly	A091-000000	1
(2)	Pump diaphragm	A909-000000	1
(3)	Pump gasket	A910-000000	1
(4)	Assembly base	A944-000000	1
(5)	Screw	A913-000000	1
(6)	Primer pump	A914-000000	1
(7)	Syringe plate	A915-000000	1
(8)	Screw	A913-000010	4
(9)	Rotor bearing	A916-000000	1
(10)	O-ring	A937-000000	1
(11)	Swivel	A927-000000	1
(12)	E-ring	A928-000000	1
(13)	Screw	A913-000020	3
(14)	Pin	A949-000000	1
(15)	Metering lever	A929-000000	1
(16)	Inlet needle valve	A930-000000	1
(17)	Metering spring	A931-000000	1
(18)	Screw	A913-000030	1
(19)	Metering diaphragm assy	A947-000000	1
(20)	Metering gasket	A935-000000	1
(21)	Metering cover	A936-000000	1
(22)	Screw	A913-000040	2
(23)	Strainer	A938-000000	1
(24)	Friction	A921-000000	1
(25)	H mixture needle	A939-000000	1
(26)	Plug bush	A940-000000	1
(27)	Throttle adjust screw	A941-000000	1
(28)	Screw	A913-000020	1
(29)	Not supplied separately		
(30)	Not included in carburetor assembly		

Carburetor component parts of before change and after change are not interchangeable independently.