

DPAS-PP

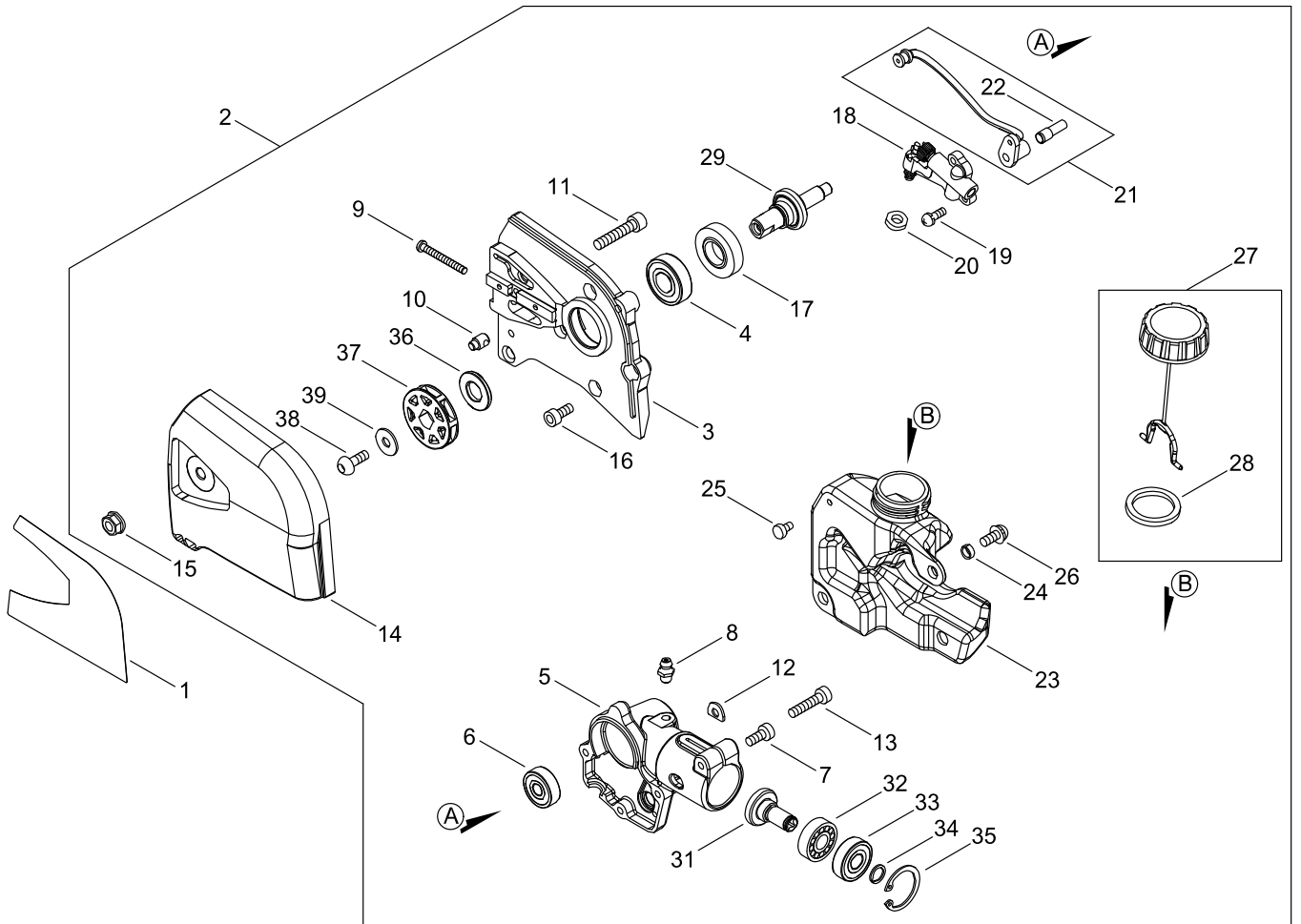
Serial number: 35001001-99999999

Last update date: 01/28/2020

TABLE OF CONTENTS

GEAR CASE.....	1
MAIN PIPE.....	3
ACCESSORIES.....	5

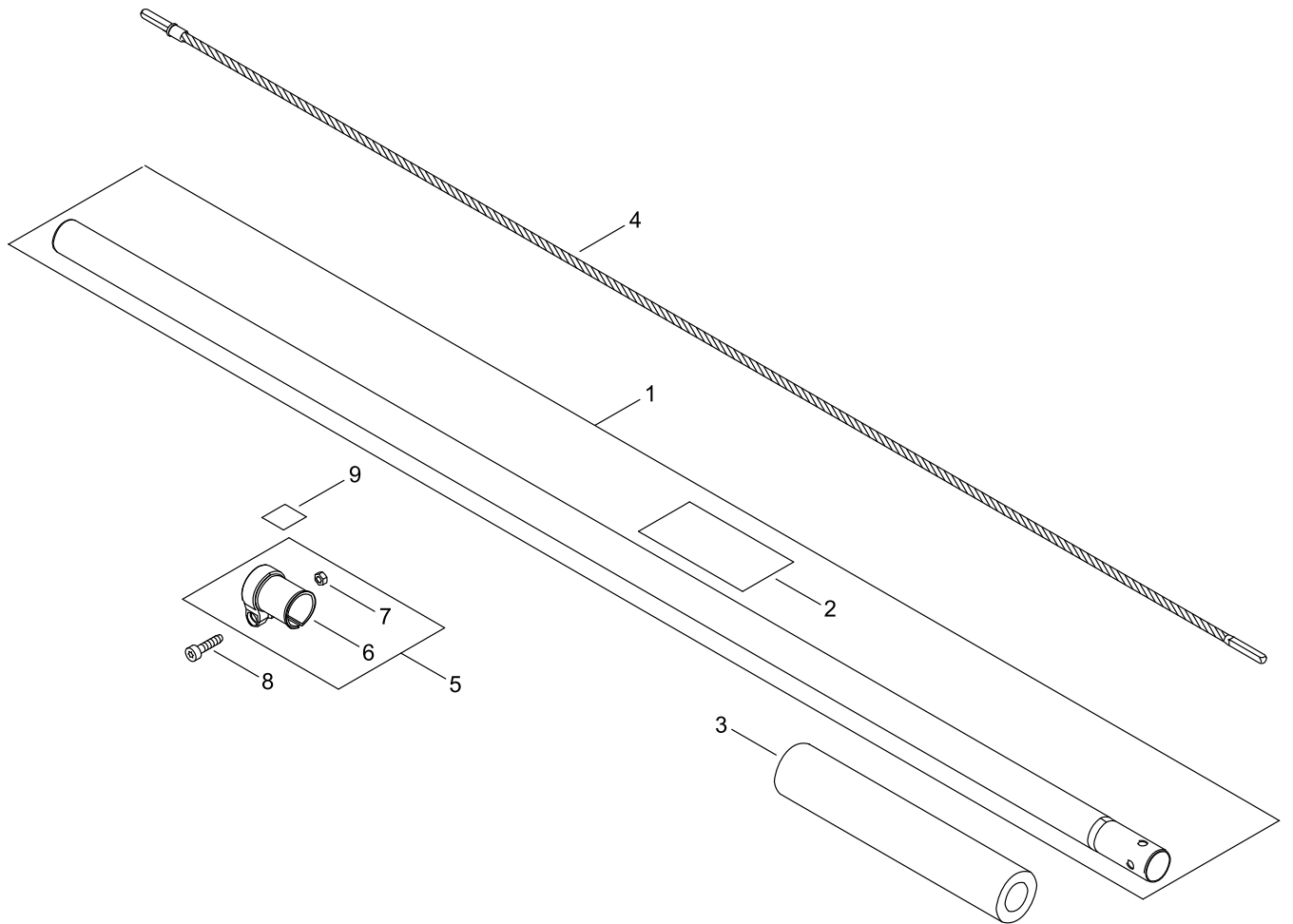
GEAR CASE



GEAR CASE

Key No.	LV (+)	Part No	Description	Qty	Standard
1		X505-010280	LABEL,CAUTION	1	
2		P100-005700	CASE,GEAR ASY	1	
3	+	C531-000530	GEAR CASE LEFT	1	
4	+	900802-06001	BEARING, BALL 6001	1	6001DDU(LLU)
5	+	C531-001130	CASE,GEAR	1	
6	+	900814-00627	BEARING, BALL 627	1	627ZZ
7	+	V805-000140	BOLT, TORX 5	1	TB-5*12 10.9
8	+	V187-000080	GREASE NIPPLE	1	
9	+	V252-000110	SCREW ADHESIVE	1	
10	+	C309-000080	SLIDE PIECE	1	
11	+	91100-06030	BOLT HSH	1	CB-6*30
12	+	V340-000300	SHIM	1	
13	+	V805-000170	BOLT, TORX 5	1	TB-5*25 10.9
14	+	C300-000941	GUARD,SPROCKET	1	
15	+	V264-000270	NUT FLANGE	1	
16	+	900105-05012	BOLT, H.S. 5*12	4	5*12
17	+	V652-000090	WORM GEAR	1	
18	+	C022-000121	AUTO-OILER ASSEMBLY	1	
19	+	91573-04010	SCREW PM PW	2	
20	+	V111-000050	GASKET PUMP	1	
21	+	P021-028850	OIL PIPE ASSY	1	
22	++	C209-000040	FILTER	1	
23	+	C200-000120	OIL TANK	1	
24	+	V354-000250	COLLAR	2	
25	+	A356-000130	VALVE,CHECK	1	
26	+	91577-05012	SCREW PM SLPW	2	
27	+	C020-000010	OIL CAP ASSY	1	
28	++	V107-000020	GASKET CAP	1	
29	+	C053-000000	GEAR SHAFT	1	
31	+	V651-001120	GEAR,BEVEL	1	
32	+	900800-00609	BEARING, BALL 609	1	609
33	+	900804-00609	BEARING, BALL 609	1	609ZZ
34	+	900706-00009	CIRCLIP 9	1	WR-9
35	+	900702-00025	CIRCLIP 25	1	CR-25
36	+	V357-000190	COLLAR	1	
37	+	C580-000570	SPROCKET	1	91XVL(3/8") 771ハ
38	+	91142-06014	BOLT HS BUTTON	1	
39	+	V304-000240	WASHER	1	

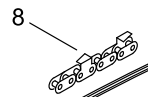
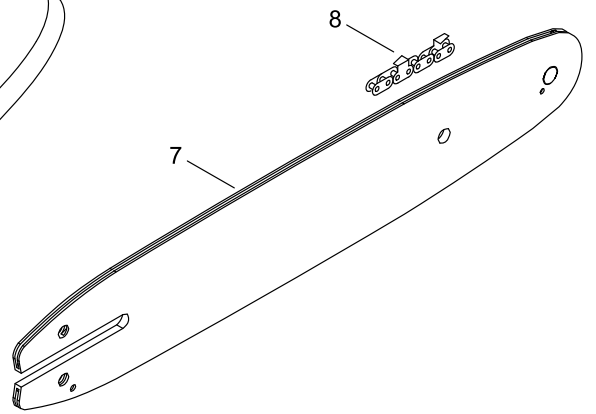
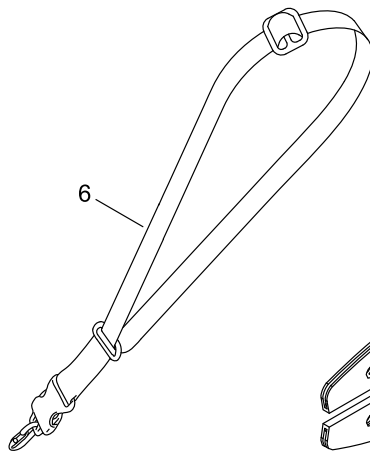
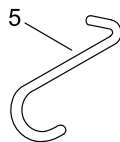
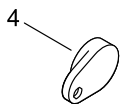
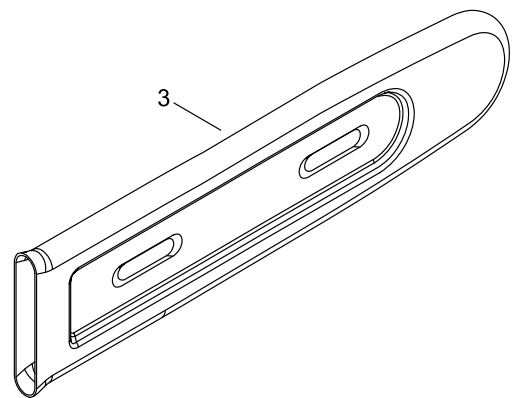
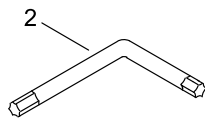
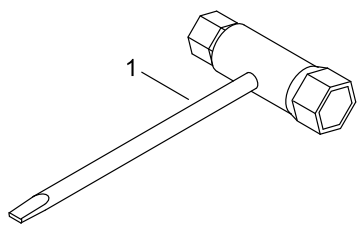
MAIN PIPE



MAIN PIPE

Key No.	LV (+)	Part No	Description	Qty	Standard
1		P100-005690	MAIN PIPE ASY	1	
2	+	X505-010380	LABEL,CAUTION	1	
3		351012-21560	GRIP, HANDLE	1	
4		C506-000530	SHAFT, FLEXIBLE	1	L:43.58"/ 1107MM
5		V495-003650	BAND	1	
6	+	V495-001060	BAND	1	
7	+	900500-00005	NUT 5	1	5
8		V805-000160	BOLT, TORX 5	1	TB-5*20 10.9
9		X505-003510	LABEL CAUTION	1	

ACCESSORIES



ACCESSORIES

Key No.	LV (+)	Part No	Description	Qty	Standard
1		X602-000190	PLUG WRENCH	1	
2		X605-000170	TOOL,L WRENCH	1	
3		X490-000920	SCABBARD,CHAIN	1	
4		C525-000012	CAP,MAIN PIPE	1	25MM PIPE
5		C649-000121	HOOK	1	8 DEGREE BEND
6		C062-000700	HARNESS, SHOULDER	1	SINGLE SLING
7		X121-000220	BAR,GUIDE 25	1	T25S90-39SA-EB
8		X221-000130	CHAIN,SAW	1	90PX-39E

NUMERICAL PARTS INDEX

Part No	Part description	Page	Part No	Part description	Page
351012-21560	GRIP, HANDLE	4	V805-000160	BOLT, TORX 5	4
900105-05012	BOLT, H.S. 5*12	2	V805-000170	BOLT, TORX 5	2
900500-00005	NUT 5	4	X121-000220	BAR,GUIDE 25	6
900702-00025	CIRCLIP 25	2	X221-000130	CHAIN,SAW	6
900706-00009	CIRCLIP 9	2	X490-000920	SCABBARD,CHAIN	6
900800-00609	BEARING, BALL 609	2	X505-003510	LABEL CAUTION	4
900802-06001	BEARING, BALL 6001	2	X505-010280	LABEL,CAUTION	2
900804-00609	BEARING, BALL 609	2	X505-010380	LABEL,CAUTION	4
900814-00627	BEARING, BALL 627	2	X602-000190	PLUG WRENCH	6
91100-06030	BOLT HSH	2	X605-000170	TOOL,L WRENCH	6
91142-06014	BOLT HS BUTTON	2			
91573-04010	SCREW PM PW	2			
91577-05012	SCREW PM SLPW	2			
A356-000130	VALVE,CHECK	2			
C020-000010	OIL CAP ASSY	2			
C022-000121	AUTO-OILER ASSEMBLY	2			
C053-000000	GEAR SHAFT	2			
C062-000700	HARNESS, SHOULDER	6			
C200-000120	OIL TANK	2			
C209-000040	FILTER	2			
C300-000941	GUARD,SPROCKET	2			
C309-000080	SLIDE PIECE	2			
C506-000530	SHAFT, FLEXIBLE	4			
C525-000012	CAP,MAIN PIPE	6			
C531-000530	GEAR CASE LEFT	2			
C531-001130	CASE,GEAR	2			
C580-000570	SPROCKET	2			
C649-000121	HOOK	6			
P021-028850	OIL PIPE ASSY	2			
P100-005690	MAIN PIPE ASY	4			
P100-005700	CASE,GEAR ASY	2			
V107-000020	GASKET CAP	2			
V111-000050	GASKET PUMP	2			
V187-000080	GREASE NIPPLE	2			
V252-000110	SCREW ADHESIVE	2			
V264-000270	NUT FLANGE	2			
V304-000240	WASHER	2			
V340-000300	SHIM	2			
V354-000250	COLLAR	2			
V357-000190	COLLAR	2			
V495-001060	BAND	4			
V495-003650	BAND	4			
V651-001120	GEAR,BEVEL	2			
V652-000090	WORM GEAR	2			
V805-000140	BOLT, TORX 5	2			