

# HCR-1501

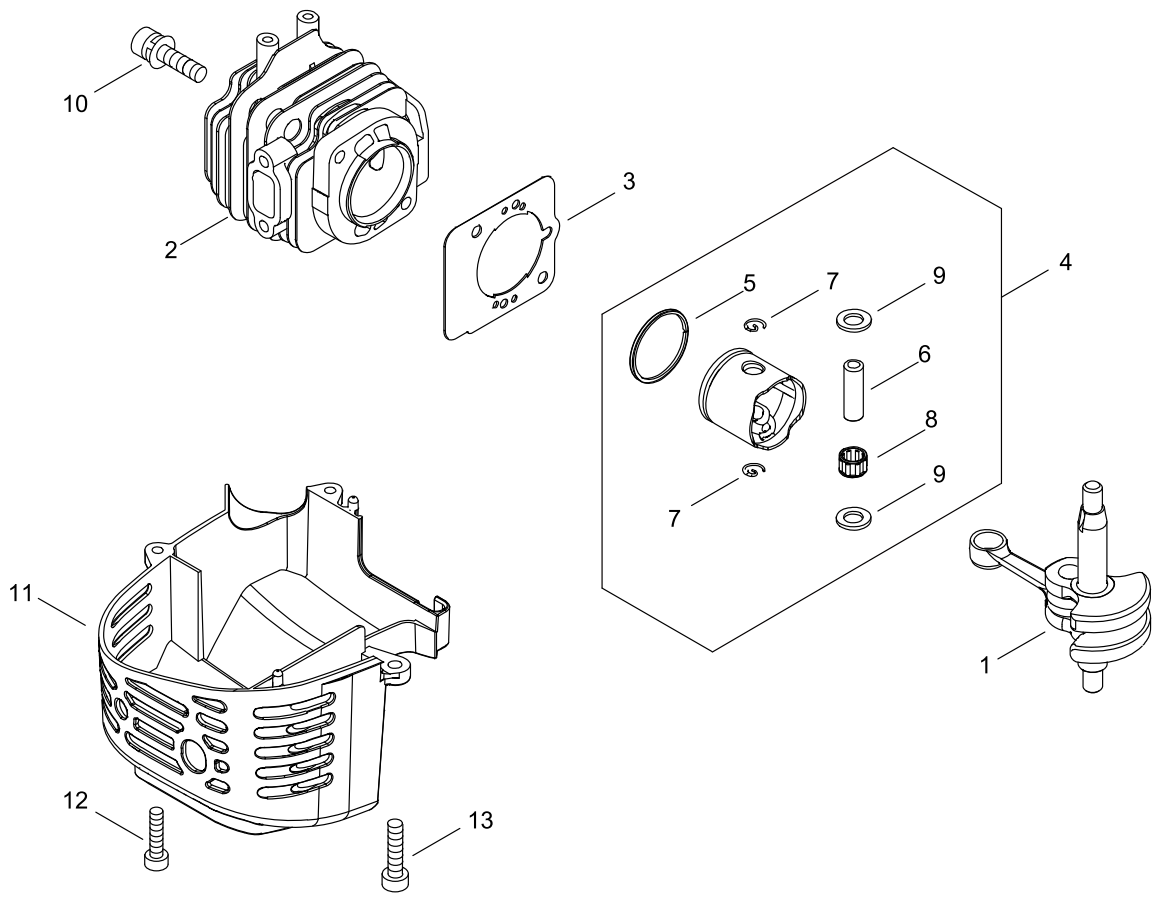
Published:04/05/2019

## TABLE OF CONTENTS

---

CYLINDER, PISTON, CRANKSHAFT.....	1
CRANKCASE .....	3
MAGNETO.....	5
AIR CLEANER, CARBURETOR.....	7
CARBURETOR.....	9
FUEL TANK.....	11
MUFFLER .....	13
RECOIL STARTER.....	15
GEAR CASE .....	17
BLADE .....	19
HANDLE.....	21
ACCESSORIES .....	23

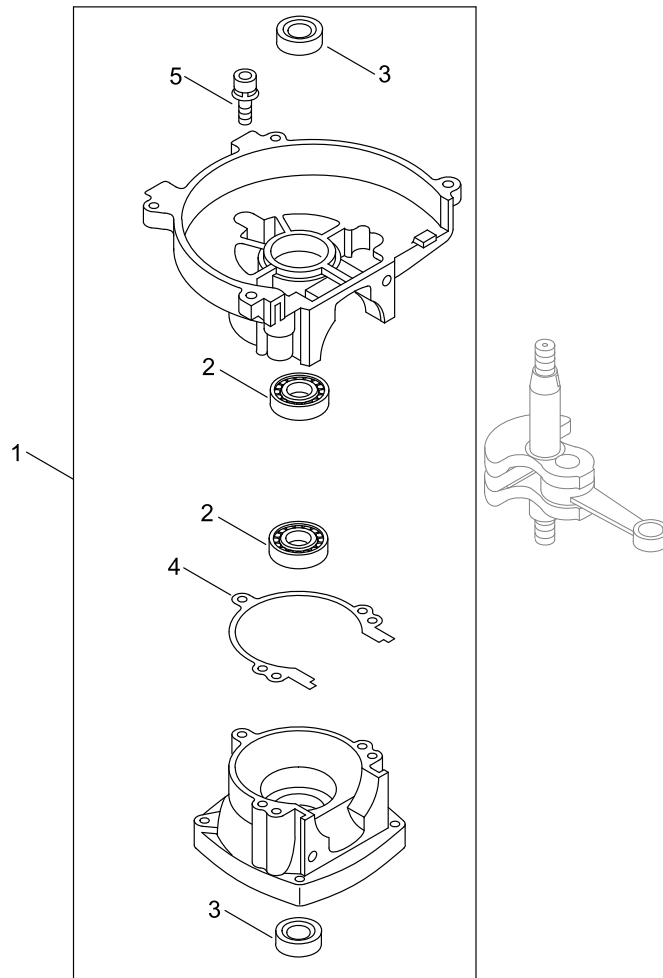
# CYLINDER, PISTON, CRANKSHAFT



## CYLINDER, PISTON, CRANKSHAFT

KEY NO	LV(+)	Part No	Description	Qty	Standard	Comment
1		A011-000313	CRANKSHAFT,ASM	1		
2		A130-000550	CYLINDER	1		
3		V100-000160	GASKET,CYL	1		
4		P021-007772	PISTON KIT	1		
5	+	A101-000090	RING,PISTON	1		
6	+	100013-11520	PIN, PISTON	1		
7	+	100015-04630	CIRCLIP, PISTON PIN	2		
8	+	100113-05930	BEARING, NEEDLE	1	8*12*8	
9	+	100014-08960	SPACER, PISTON PIN	2		
10		900162-05022	BOLT, H.S. 5*22	2	5*22 W,SW	
11		A160-002590	COVER,CYLINDER	1		
12		V804-000010	BOLT, TORX 4	2	TT-4*16 DG 10.9	
13		V805-000150	BOLT, TORX 5	1	TB-5*16 10.9	

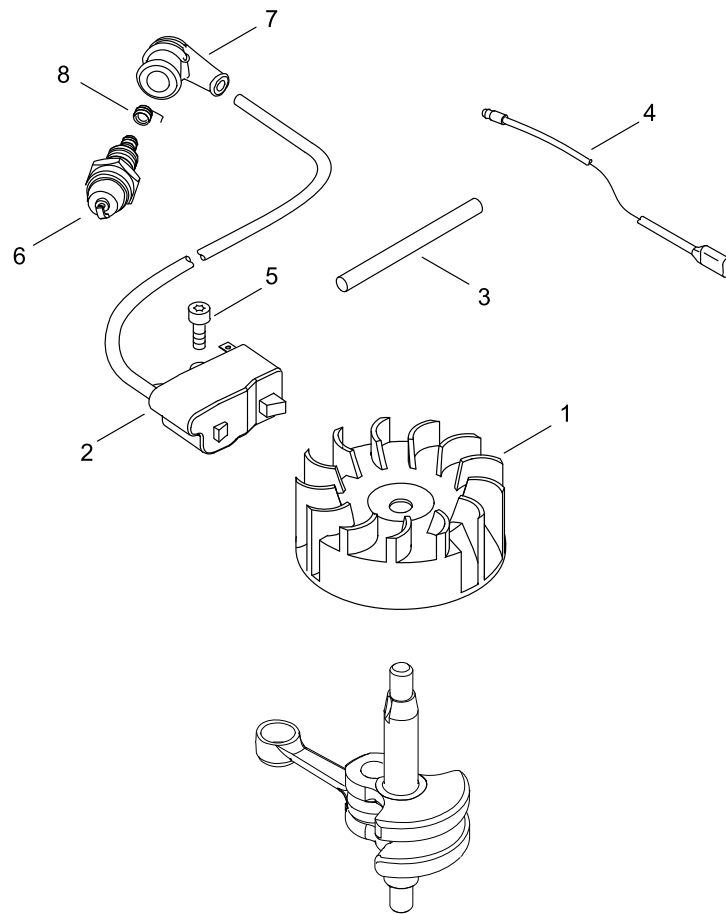
# CRANKCASE



## CRANKCASE

KEY NO	LV(+)	Part No	Description	Qty	Standard	Comment
1		P100-003510	CRANKCASE SET	1		
2	+	94035-36201	BEARING BALL	2	6201X3JR2C3	
3	+	100212-42031	OILSEAL	2	ISCD 12*22*4.5	
4	+	100242-42030	GASKET, CRANKCASE	1		
5	+	900162-05028	BOLT, H.S. 5*28	3	5*28 W,SW	

# MAGNETO

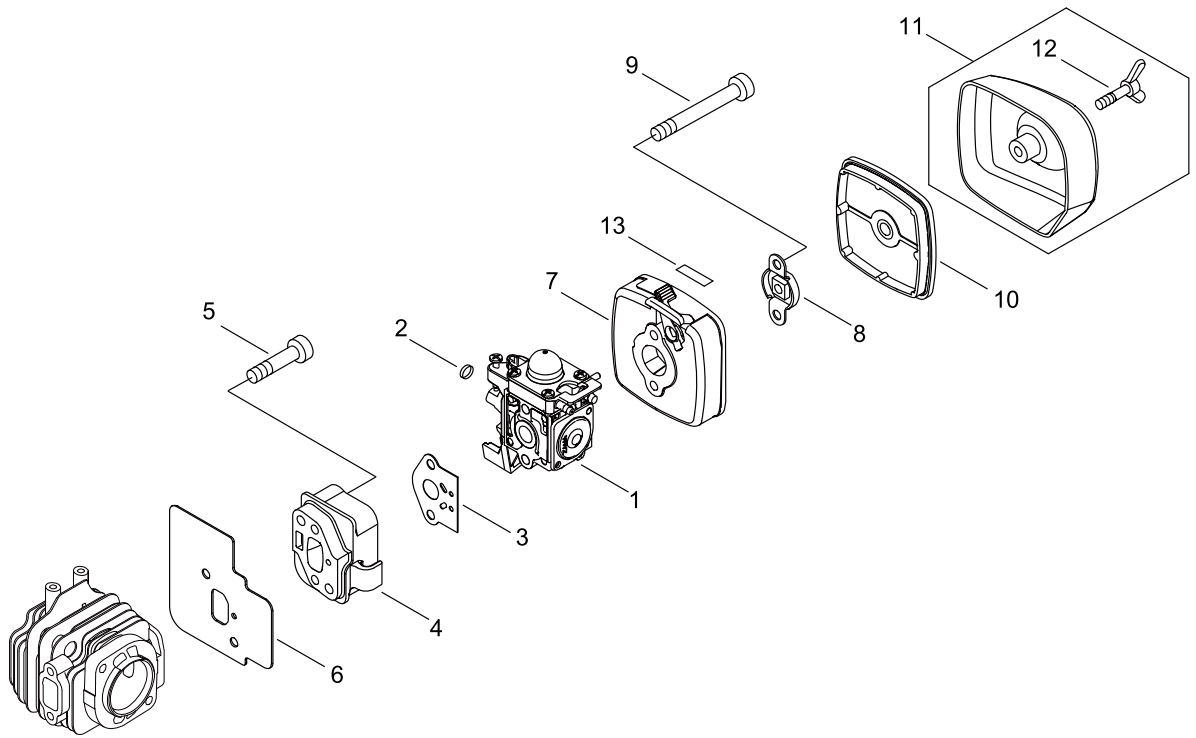


## MAGNETO

KEY NO	LV(+)	Part No	Description	Qty	Standard	Comment
1		A409-000150	ROTOR,MAGNETO	1		
2		A411-000211	COIL,IGNITION	1	EMG-60D ID#C9822	
3		V475-007510	TUBE	1		
4		V485-000870	LEAD	1	L=190,#187, CA104	
5		V804-000070	BOLT, TORX 4	2	TB-4*20 12.9	
6		A425-000000	SPARKPLUG	1	BPMR8Y	
7		A427-000013	CAP,SPARK PLUG	1		
8		A426-000010	TERMINAL,SPARKPLUG	1		



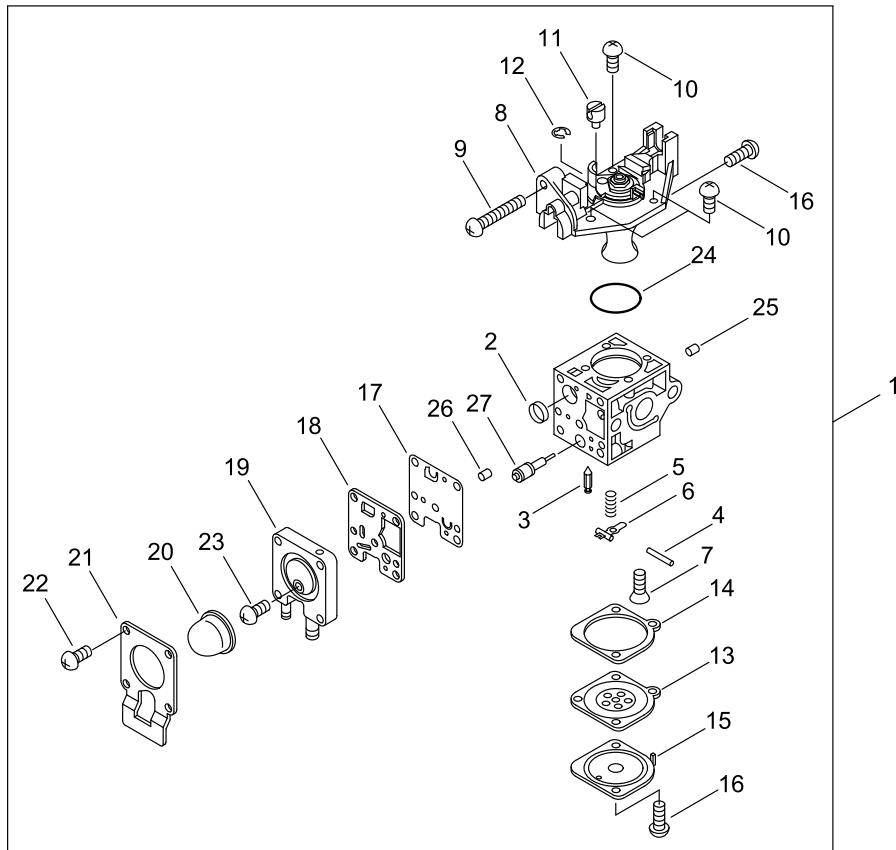
# AIR CLEANER, CARBURETOR



## AIR CLEANER, CARBURETOR

KEY NO	LV(+)	Part No	Description	Qty	Standard	Comment
1		A021-004740	CARBURETOR, DIAPHRAGM	1	ZAMA RB-K92A	
2		V490-001100	CLIP	1		
3		V103-001580	GASKET,INTAKE	1		
4		A200-000300	INSULATOR, INTAKE	1		
5		V805-000170	BOLT, TORX 5	2	TB-5*25 10.9	
6		V103-001591	GASKET,INTAKE	1	T0.5	
7		P021-049010	CASE,CLEANER	1		
8		129011-52730	PLATE, PREVENT	1		
9		V805-000100	BOLT, TORX 5	2	TB-5*65 10.9	
10		A226-001410	ELEMENT,AIR FILTER	1		
11		P100-000110	CLEANER LID ASY	1		
12	+	210417-52730	BOLT, WING	1	5*20	
13		890332-52730	LABEL, CHOKE	1		

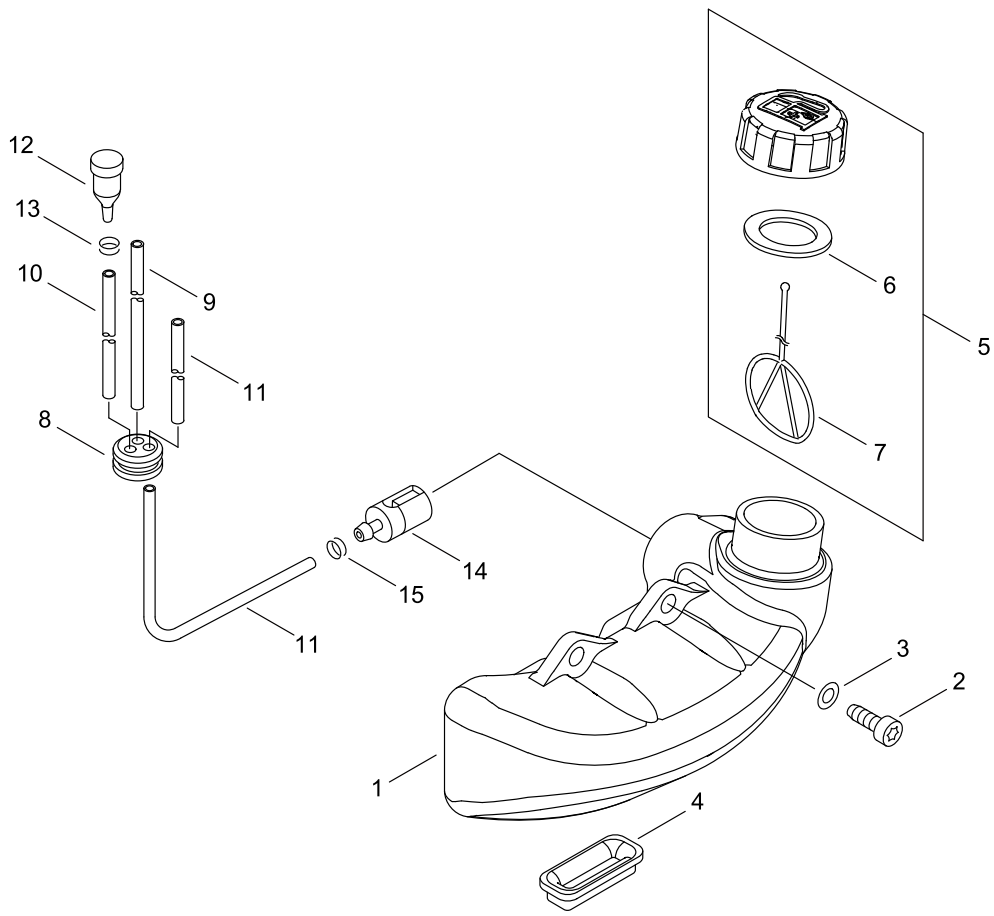
# CARBURETOR



## CARBURETOR

KEY NO	LV(+)	Part No	Description	Qty	Standard	Comment
1		A021-004740	CARBURETOR, DIAPHRAGM	1	ZAMA RB-K92A	
2	+	P005-000010	STRAINER	1		
3	+	125337-08260	VALVE, INLET NEEDLE	1		
4	+	125338-13930	PIN, METERING ARM	1		
5	+	P005-000940	SPRING, METER. LEVER	1		
6	+	125323-08260	ARM, VALVE	1		
7	+	125339-42030	SCREW	1		
8	+	P005-002050	COVER ASY, ROTOR	1		
9	+	P005-000100	SCREW, THROTTLEADJUST	1		
10	+	125344-13931	SCREW	3		
11	+	P005-002200	POST	1		
12	+	P005-000190	E-RING	1		
13	+	P005-002230	DIAPHRAGM ,METERING	1		
14	+	P005-000200	GASKET, METERING	1		
15	+	125342-52130	COVER, DIAPHRAGM	1		
16	+	125344-52130	SCREW	3		
17	+	P005-000510	DIAPHRAGM, PUMP	1		
18	+	P005-000520	GASKET, PUMP	1		
19	+	P005-002480	BASE ASY,PRIMER	1		
20	+	P005-003110	PUMP, PRIMER	1		
21	+	P005-000250	RETAINER	1		
22	+	P005-001900	SCREW	4		
23	+	P005-000270	SCREW	1		
24	+	P005-000280	O-RING	1		
25	+	P005-001000	ROLLER, GUIDE	1		
26	+	P005-001250	RETAINER,PLUG BALL	1		
27	+	P005-001260	SCREW,MAINN MIXTURE	1		

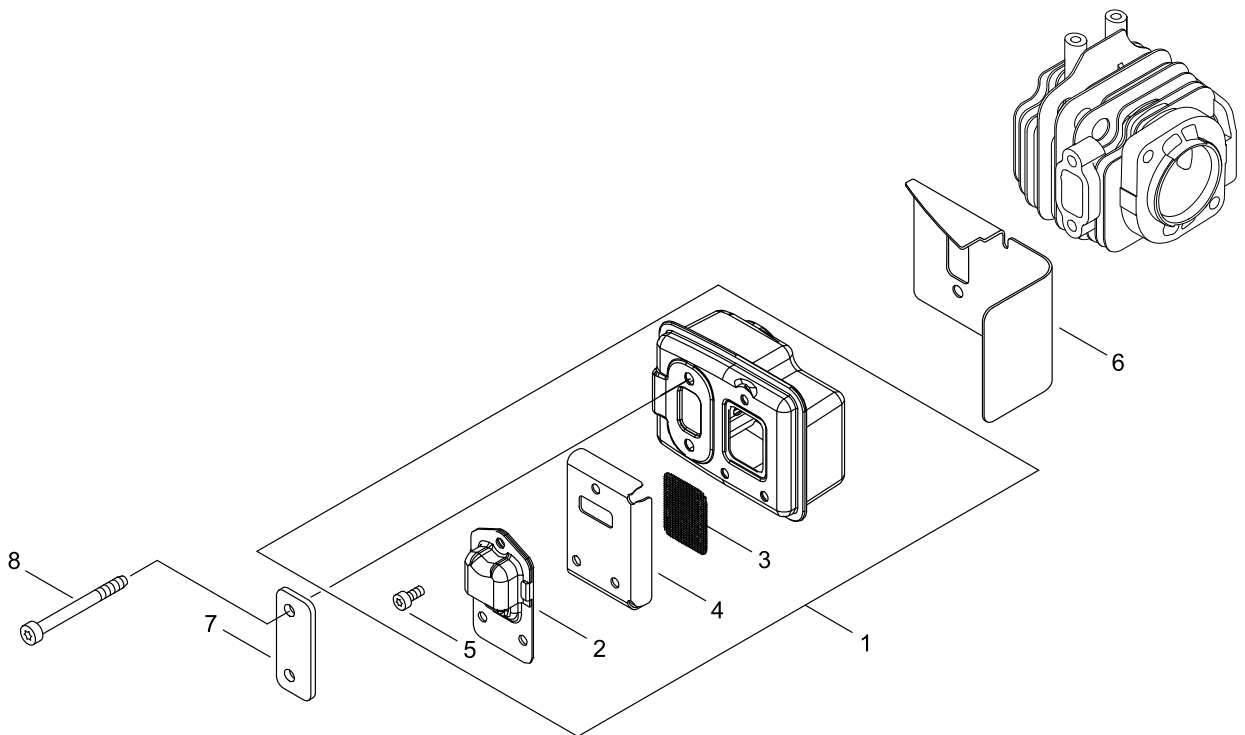
# FUEL TANK



## FUEL TANK

KEY NO	LV(+)	Part No	Description	Qty	Standard	Comment
1		A350-000041	TANK,FUEL	1		
2		V805-000000	BOLT, TORX 5	2	TT-5*16 DG 10.9	
3		900603-00005	WASHER 5	2	5.5*12*0.8	
4		131920-61830	CUSHION, FUEL TANK	1		
5		P021-012211	CAP,FUEL ASY	1		
6	+	V107-000190	GASKET,FUEL CAP	1	37.9*T2.2	
7	+	A365-000060	CONNECTOR,CAP	1	L=123	
8		132115-46730	GROMMET, FUEL	1		
9		V470-000581	PIPE	1	3*5*195	
10		V471-001201	PIPE	1	3*5*70	
11		132010-40830	PIPE 3* 6* 75	1	3*6*75 YL	
12		A356-000031	VALVE,CHECK	1		
13		V490-001240	CLIP	1		
14		A369-000480	STRAINER, FUEL	1	125-959	
15		V490-001240	CLIP	1		

# MUFFLER

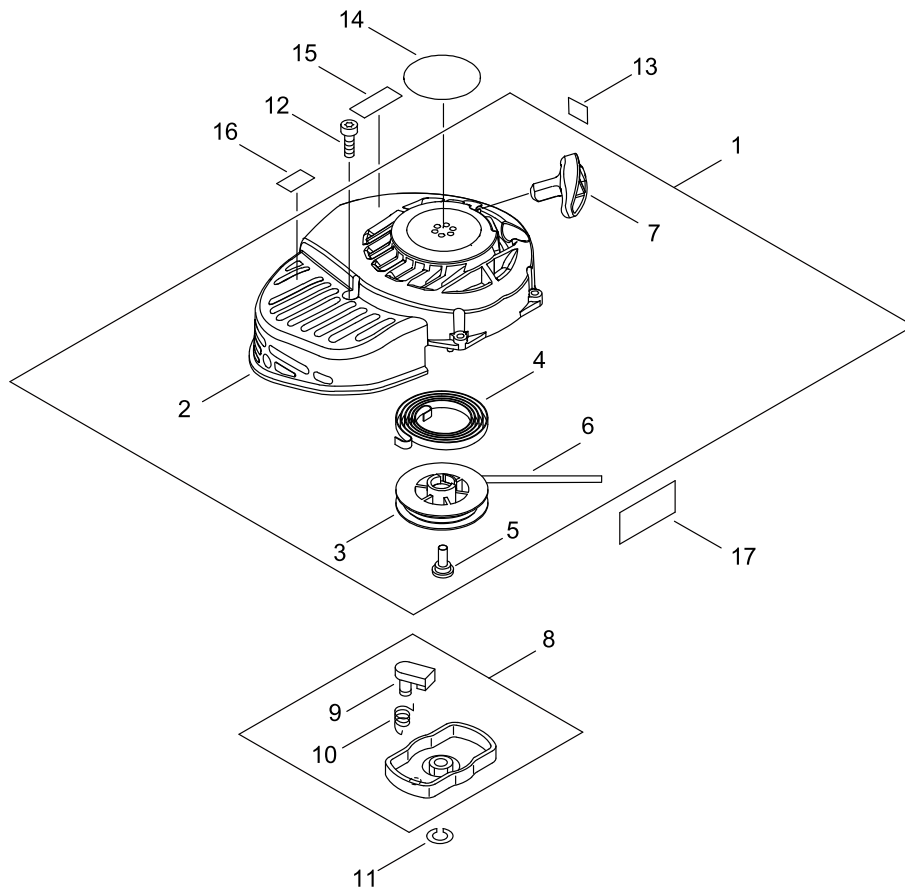


## MUFFLER

KEY NO	LV(+)	Part No	Description	Qty	Standard	Comment
1		P021-045640	MUFFLER ASY	1		
2	+	A313-000700	GUIDE,EXH	1	ID#1090	
3	+	145862-40630	SCREEN, MUFFLER	1		
4	+	V104-000072	GASKET,EXHAUST	1		
5	+	V804-000030	BOLT, TORX 4	3	TB-4*8 10.9	
6		V104-001990	GASKET,EXHAUST	1		
7		V150-000371	PLATE,EYE	1		
8		V805-000190	BOLT, TORX 5	2	TB-5*55 12.9	



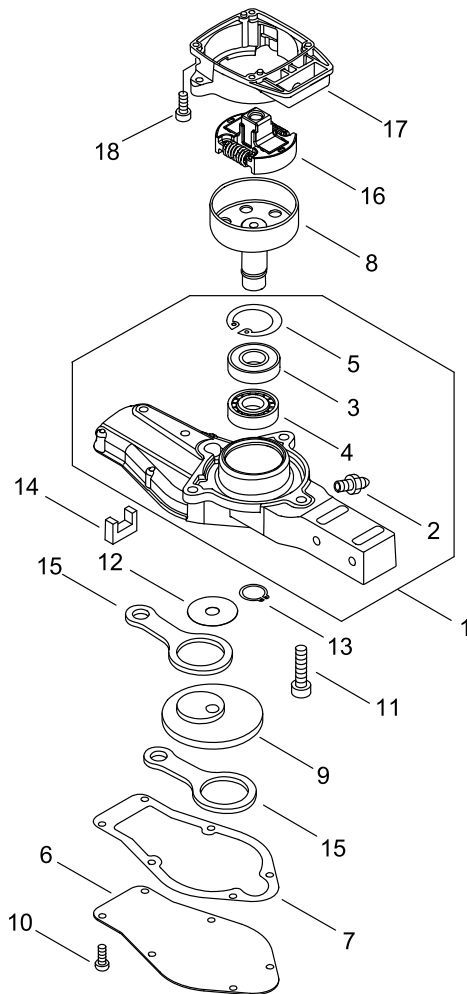
# RECOIL STARTER



## RECOIL STARTER

KEY NO	LV(+)	Part No	Description	Qty	Standard	Comment
1		A051-002590	STARTER,RECOIL ASY	1		
2	+	P022-039610	CASE, STARTER	1		
3	+	177215-44430	DRUM, STARTER	1		
4	+	177220-42030	SPRING, REWIND	1		
5	+	177236-44330	SCREW	1		
6	+	P022-006231	ROPE	1		
7	+	P022-023170	GRIP, STARTER	1		
8		A052-000160	PULLEY,ASM STARTER	1		
9	+	177218-44330	PAWL, STARTER	2	BLACK	
10	+	177234-12220	SPRING, PAWL	2		
11		900605-00008	WASHER, SPRING 8	1	8	
12		V804-000060	BOLT, TORX 4	4	TB-4*16 10.9	
13		X524-001901	LABEL	1		
14		X502-000890	LABEL,ECHO	1		
15		X503-012660	LABEL,MODEL	1		
16		X505-002310	LABEL,CAUTION	1	HOT CAUTION	
17		890123-13360	LABEL, CAUTION	1		

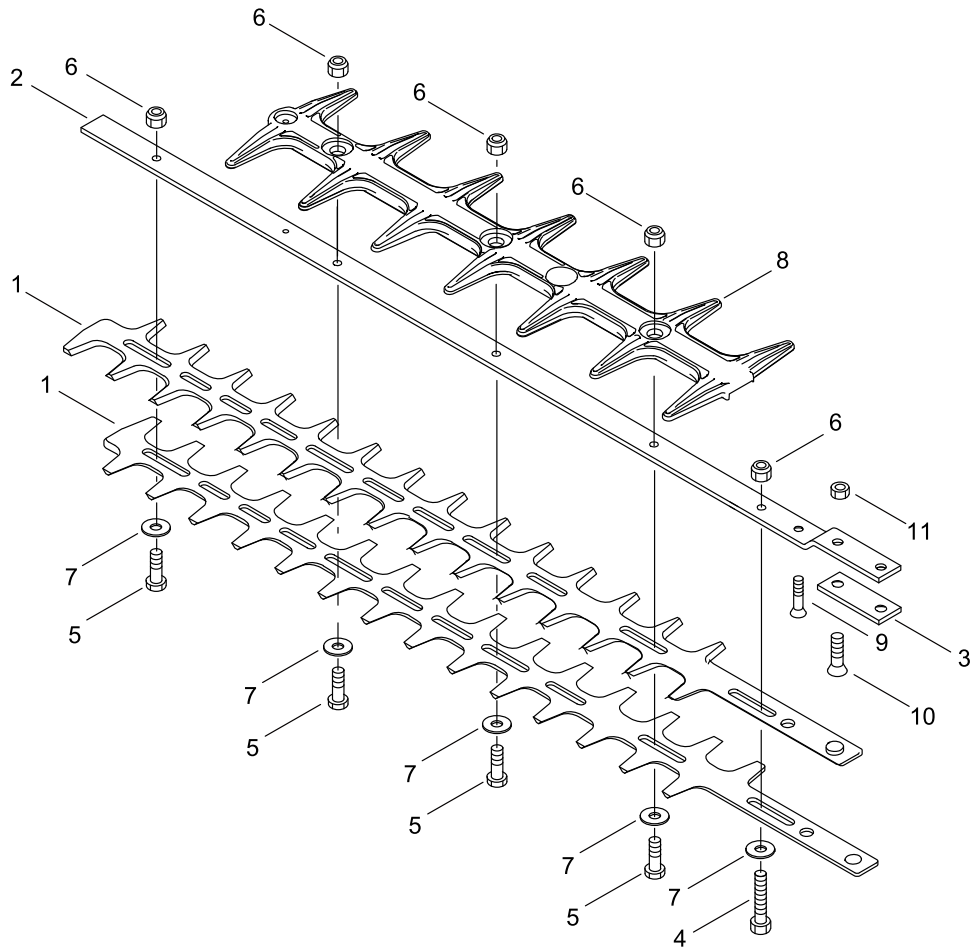
# GEAR CASE



## GEAR CASE

KEY NO	LV(+)	Part No	Description	Qty	Standard	Comment
1		P100-007510	CASE ASY, GEAR	1		
2	+	880110-10860	NIPPLE, GREASE	1		
3	+	900812-06202	BEARING, BALL 6202	1	6202DDU(LLU)	
4	+	900810-36202	BEARING, BALL 6202	1	6202/C3	
5	+	900702-00035	CIRCLIP 35	1	CR-35	
6		610411-05361	LID, GEARCASE	1		
7		610414-05360	GASKET, GEAR HOUSING	1		
8		A556-001620	DRUM, CLUTCH	1	50 T:1.4	
9		610312-04560	GEAR	1		
10		V804-000040	BOLT, TORX 4	6	TB-4*10 10.9	
11		V806-000130	BOLT, TORX 6	3		
12		610350-04560	WASHER	1		
13		900701-00014	CIRCLIP 14	1	CS-14	
14		610425-04560	SEAL	1		
15		C532-000121	ROD, CONNECTING	2		
16		A056-000740	CLUTCH ASY	1		
17		A570-000310	CASE,CLUTCH	1		
18		V804-000060	BOLT, TORX 4	4	TB-4*16 10.9	

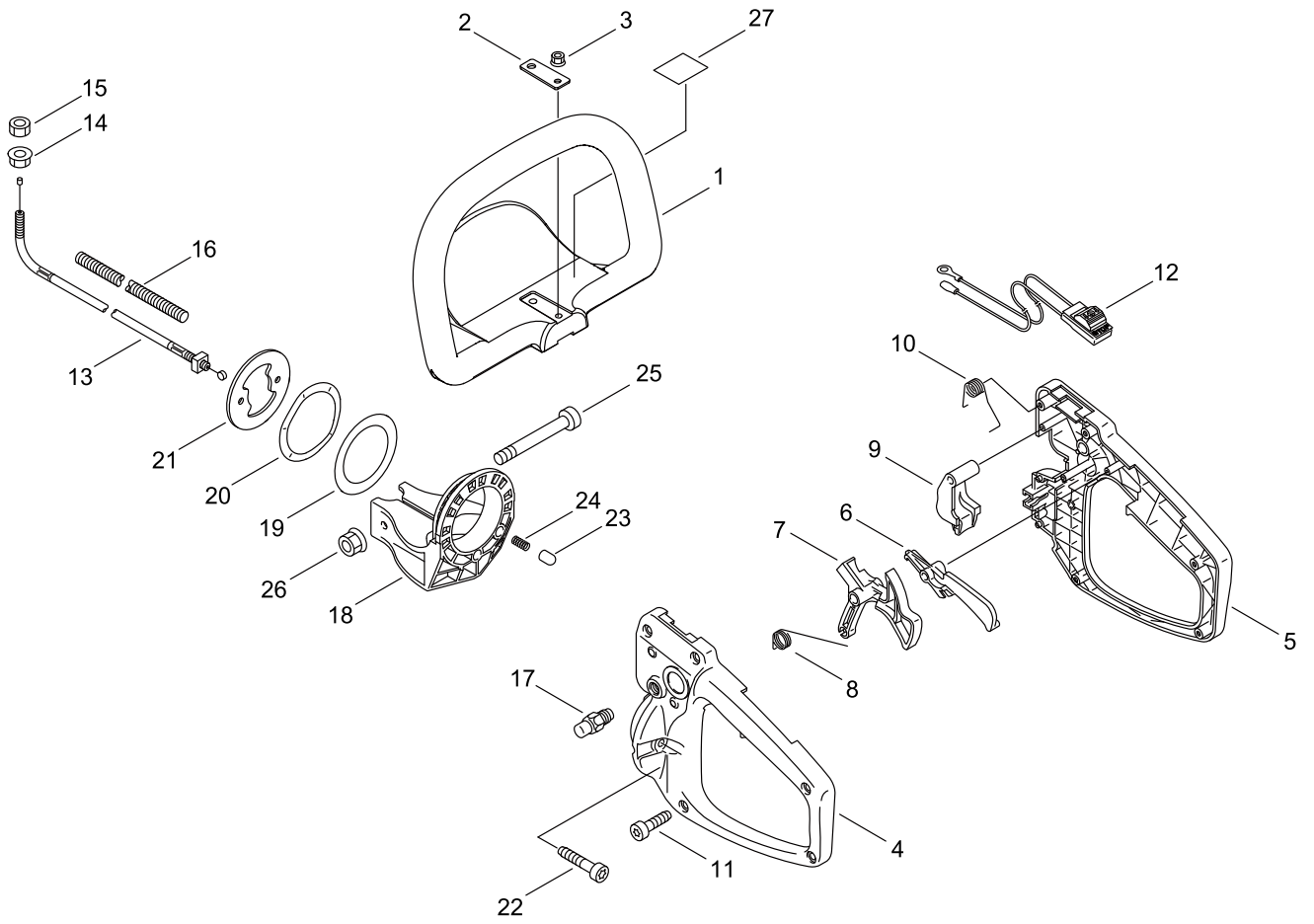
# BLADE



## BLADE

KEY NO	LV(+)	Part No	Description	Qty	Standard	Comment
1		X412-000630	CUTTER	2		
2		X425-000890	SUPPORT,CUTTER	1		
3		610440-04560	HOLDER, FRAME	1		
4		699115-05360	BOLT	1		
5		V204-000570	BOLT	4		
6		433022-06460	NUT	5		
7		V304-000240	WASHER	5		
8		X431-000200	BLUNT	1		
9		900212-05030	SCREW (5*30*P0.8)	1	+SF5*30	
10		900212-06025	SCREW 6*25	2	+SF6*25	
11		900500-00006	NUT 6	2	6	

# HANDLE

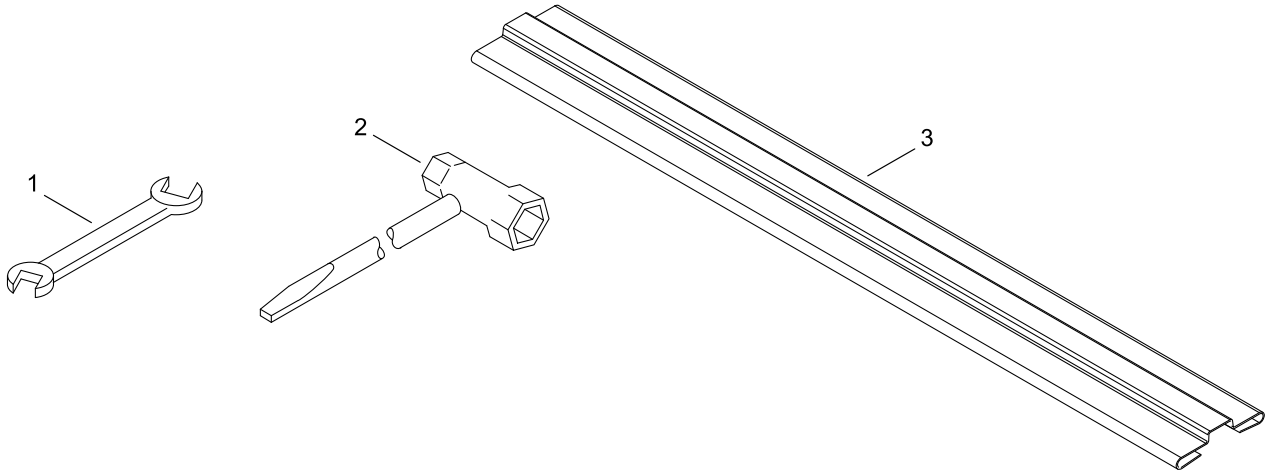


## HANDLE

KEY NO	LV(+)	Part No	Description	Qty	Standard	Comment
1		C400-000533	HANDLE, FRONT	1		
2		351611-05360	WASHER	1		
3		92108-05000	NUT, FLANGE	1		
4		351010-13361	HANDLE, REAR	1		
5		351210-13361	HANDLE	1		
6		178012-13360	LOCKOUT, THROTTLE	1		
7		178010-13361	TRIGGER, THROTTLE	1		
8		178013-13660	SPRING, TORSION	1		
9		351648-13360	STOPPER, HANDLE	1		
10		178043-13660	SPRING,TORSION	1		
11		V804-000010	BOLT, TORX 4	5	TT-4*16 DG 10.9	
12		A440-002550	SWITCH, ON OFF	1	LA104 CB104	
13		V430-004680	CABLE,BOWDEN	1		
14		900515-00006	NUT, FLANGE 6	1	6	
15		900502-00006	NUT 6 (3N)	1	3N6	
16		V475-001280	TUBE	1	7*140 コルゲート	
17		P100-007520	LATCH ASY	1		
18		351312-13361	BRACKET, HANDLE	1		
19		689025-13361	WASHER,CIRCUAR	1		
20		178129-13361	WASHER	1		
21		351313-13361	BRACKET, HANDLE	1		
22		V805-000050	BOLT, TORX 5	2	TB-5*30 10.9	
23		605611-13360	PIN	2		
24		178043-13360	SPRING	2		
25		V805-000280	BOLT, TORX 5	2	TB-5*45 10.9	
26		92108-05000	NUT, FLANGE	2		
27		X505-002030	LABEL,CAUTION	1	37*35	



# ACCESSORIES



## ACCESSORIES

KEY NO	LV(+)	Part No	Description	Qty	Standard	Comment
1		895112-00330	SPANNER 8*10	1		
2		895410-03930	WRENCH, W/S. DRIVER	1		
3		X495-000810	SCABBARD, BLADE	1	L560MM	

# NUMERICAL PARTS INDEX

Part No	Part description	Page	Part No	Part description	Page	Part No	Part description	Page
100013-1-1520	PIN, PISTON	2	178012-1-3360	LOCKOUT, THROTTLE	22	890332-5-2730	LABEL, CHOKE	8
100014-0-8960	SPACER, PISTON PIN	2	178013-1-3660	SPRING, TORSION	22	895112-0-0330	SPANNER 8*10	24
100015-0-4630	CIRCLIP, PISTON PIN	2	178043-1-3360	SPRING	22	895410-0-3930	WRENCH, W/S. DRIVER	24
100113-0-5930	BEARING, NEEDLE	2	178043-1-3660	SPRING, TORSION	22	900162-0-5022	BOLT, H.S. 5*22	2
100212-4-2031	OILSEAL	4	178129-1-3361	WASHER	22	900162-0-5028	BOLT, H.S. 5*28	4
100242-4-2030	GASKET, CRANKCASE	4	210417-5-2730	BOLT, WING	8	900212-0-5030	SCREW (5*30*P0.8)	20
125323-0-8260	ARM, VALVE	10	351010-1-3361	HANDLE, REAR	22	900212-0-6025	SCREW 6*25	20
125337-0-8260	VALVE, INLET NEEDLE	10	351210-1-3361	HANDLE	22	900500-0-0006	NUT 6	20
125338-1-3930	PIN, METERING ARM	10	351312-1-3361	BRACKET, HANDLE	22	900502-0-0006	NUT 6 (3N)	22
125339-4-2030	SCREW	10	351313-1-3361	BRACKET, HANDLE	22	900515-0-0006	NUT, FLANGE 6	22
125342-5-2130	COVER, DIAPHRAGM	10	351611-0-5360	WASHER	22	900603-0-0005	WASHER 5	12
125344-1-3931	SCREW	10	351648-1-3360	STOPPER, HANDLE	22	900605-0-0008	WASHER, SPRING 8	16
125344-5-2130	SCREW	10	433022-0-6460	NUT	20	900701-0-0014	CIRCLIP 14	18
129011-5-2730	PLATE, PREVENT	8	605611-1-3360	PIN	22	900702-0-0035	CIRCLIP 35	18
131920-6-1830	CUSHION, FUEL TANK	12	610312-0-4560	GEAR	18	900810-3-6202	BEARING, BALL 6202	18
132010-4-0830	PIPE 3* 6* 75	12	610350-0-4560	WASHER	18	900812-0-6202	BEARING, BALL 6202	18
132115-4-6730	GROMMET, FUEL	12	610411-0-5361	LID, GEARCASE	18	92108-05-000	NUT, FLANGE	22
145862-4-0630	SCREEN, MUFFLER	14	610414-0-5360	GASKET, GEAR HOUSING	18	94035-36-201	BEARING BALL	4
177215-4-4430	DRUM, STARTER	16	610425-0-4560	SEAL	18	A011-00-0313	CRANKSHAFT,ASM	2
177218-4-4330	PAWL, STARTER	16	610440-0-4560	HOLDER, FRAME	20	A021-00-4740	CARBURETOR, DIAPHRAGM	8
177220-4-2030	SPRING, REWIND	16	689025-1-3361	WASHER, CIRCULAR	22	A021-00-4740	CARBURETOR, DIAPHRAGM	10
177234-1-2220	SPRING, PAWL	16	699115-0-5360	BOLT	20	A051-00-2590	STARTER, RECOIL ASY	16
177236-4-4330	SCREW	16	880110-1-0860	NIPPLE, GREASE	18	A052-00-0160	PULLEY, ASM STARTER	16
178010-1-3361	TRIGGER, THROTTLE	22	890123-1-3360	LABEL, CAUTION	16	A056-00-0740	CLUTCH ASY	18

# NUMERICAL PARTS INDEX

Part No	Part description	Page	Part No	Part description	Page	Part No	Part description	Page
A101-00-0090	RING,PISTON	2	P005-00-0250	RETAINER	10	P100-00-7510	CASE ASY, GEAR	18
A130-00-0550	CYLINDER	2	P005-00-0270	SCREW	10	P100-00-7520	LATCH ASY	22
A160-00-2590	COVER,CYLINDER	2	P005-00-0280	O-RING	10	V100-00-0160	GASKET,CYL	2
A200-00-0300	INSULATOR, INTAKE	8	P005-00-0510	DIAPHRAGM, PUMP	10	V103-00-1580	GASKET,INTAKE	8
A226-00-1410	ELEMENT,AIR FILTER	8	P005-00-0520	GASKET, PUMP	10	V103-00-1591	GASKET,INTAKE	8
A313-00-0700	GUIDE,EXH	14	P005-00-0940	SPRING, METER. LEVER	10	V104-00-0072	GASKET,EXHAUST	14
A350-00-0041	TANK,FUEL	12	P005-00-1000	ROLLER, GUIDE	10	V104-00-1990	GASKET,EXHAUST	14
A356-00-0031	VALVE,CHECK	12	P005-00-1250	RETAINER,PLUG BALL	10	V107-00-0190	GASKET,FUEL CAP	12
A365-00-0060	CONNECTOR,CAP	12	P005-00-1260	SCREW,MAINN MIXTURE	10	V150-00-0371	PLATE,EYE	14
A369-00-0480	STRAINER, FUEL	12	P005-00-1900	SCREW	10	V204-00-0570	BOLT	20
A409-00-0150	ROTOR,MAGNETO	6	P005-00-2050	COVER ASY, ROTOR	10	V304-00-0240	WASHER	20
A411-00-0211	COIL,IGNITION	6	P005-00-2200	POST	10	V430-00-4680	CABLE,BOWDEN	22
A425-00-0000	SPARKPLUG	6	P005-00-2230	DIAPHRAGM , METERING	10	V470-00-0581	PIPE	12
A426-00-0010	TERMINAL, SPARKPLUG	6	P005-00-2480	BASE ASY,PRIMER	10	V471-00-1201	PIPE	12
A427-00-0013	CAP,SPARK PLUG	6	P005-00-3110	PUMP, PRIMER	10	V475-00-1280	TUBE	22
A440-00-2550	SWITCH, ON OFF	22	P021-00-7772	PISTON KIT	2	V475-00-7510	TUBE	6
A556-00-1620	DRUM, CLUTCH	18	P021-01-2211	CAP,FUEL ASY	12	V485-00-0870	LEAD	6
A570-00-0310	CASE,CLUTCH	18	P021-04-5640	MUFFLER ASY	14	V490-00-1100	CLIP	8
C400-00-0533	HANDLE, FRONT	22	P021-04-9010	CASE,CLEANER	8	V490-00-1240	CLIP	12
C532-00-0121	ROD, CONNECTING	18	P022-00-6231	ROPE	16	V804-00-0010	BOLT, TORX 4	2
P005-00-0010	STRAINER	10	P022-02-3170	GRIP, STARTER	16	V804-00-0010	BOLT, TORX 4	22
P005-00-0100	SCREW, THROTTLEADJUST	10	P022-03-9610	CASE, STARTER	16	V804-00-0030	BOLT, TORX 4	14
P005-00-0190	E-RING	10	P100-00-0110	CLEANER LID ASY	8	V804-00-0040	BOLT, TORX 4	18
P005-00-0200	GASKET, METERING	10	P100-00-3510	CRANKCASE SET	4	V804-00-0060	BOLT, TORX 4	16

## NUMERICAL PARTS INDEX

Part No	Part description	Page
V804-00-0060	BOLT, TORX 4	18
V804-00-0070	BOLT, TORX 4	6
V805-00-0000	BOLT, TORX 5	12
V805-00-0050	BOLT, TORX 5	22
V805-00-0100	BOLT, TORX 5	8
V805-00-0150	BOLT, TORX 5	2
V805-00-0170	BOLT, TORX 5	8
V805-00-0190	BOLT, TORX 5	14
V805-00-0280	BOLT, TORX 5	22
V806-00-0130	BOLT, TORX 6	18
X412-00-0630	CUTTER	20
X425-00-0890	SUPPORT,CUTTER	20
X431-00-0200	BLUNT	20
X495-00-0810	SCABBARD,BLADE	24
X502-00-0890	LABEL,ECHO	16
X503-01-2660	LABEL,MODEL	16
X505-00-2030	LABEL,CAUTION	22
X505-00-2310	LABEL,CAUTION	16
X524-00-1901	LABEL	16