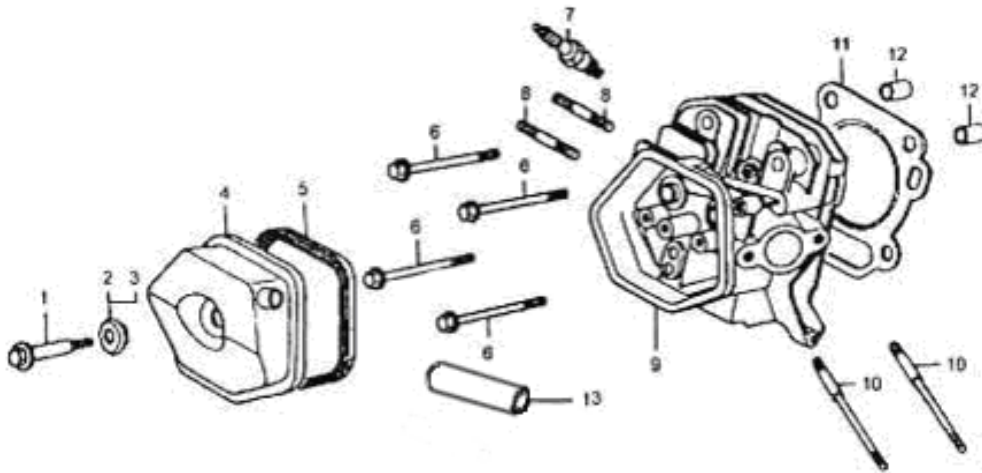


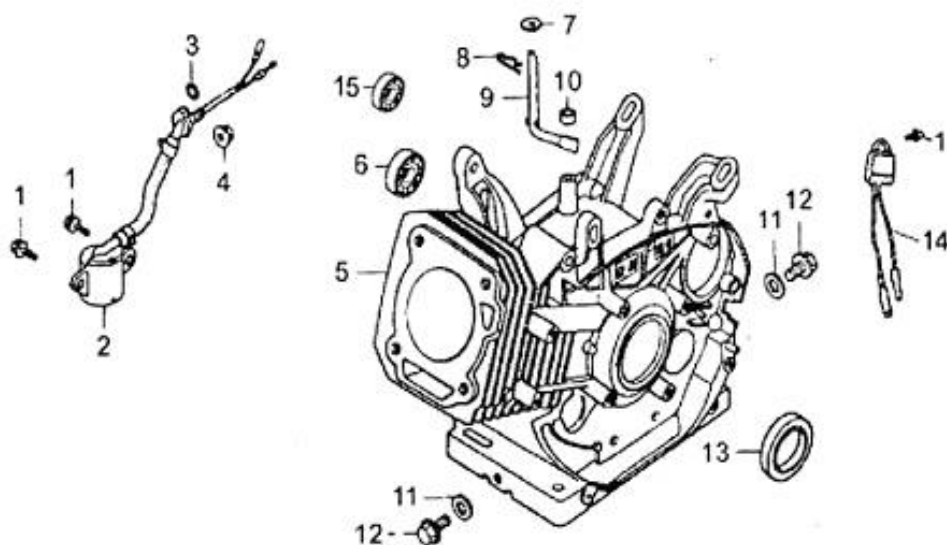
Cylinder head system assy.



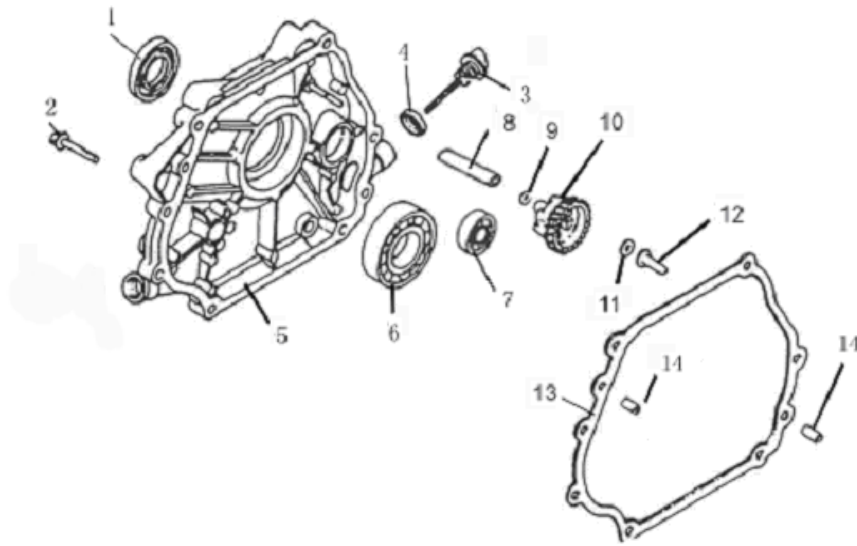
| SN | DESCRIPTION               | CODE NO.    |            | QTY/UNIT |       | REMARK   |
|----|---------------------------|-------------|------------|----------|-------|----------|
|    |                           | JF340       | JF390      | JF340    | JF390 |          |
| 1  | HEAD COVER COMP. BOLT     | JF340-A-01  |            | 1        | 1     |          |
| 2  | HEAD COVER WASHER COMP.   | JF340-A-02  |            | 1        | 1     |          |
| 3  | WASHER COVER PACKING      | JF340-A-03  |            | 1        | 1     |          |
| 4  | HEAD COVER COMP.          | JF340-A-04  |            | 1        | 1     | ASSEMBLY |
| 5  | HEAD COVER PACKING        | JF340-A-05  |            | 1        | 1     |          |
| 6  | FLANGE BOLT (M10×80)      | JF340-A-06  |            | 4        | 4     |          |
| 7  | SPARK PLUG                | JF340-A-07  |            | 1        | 1     |          |
| 8  | EXHAUST PIPE STUD BOLT    | JF340-A-08A |            | 2        | 2     |          |
| 9  | CYLINDER HEAD COMP.       | JF340-A-09  |            | 1        | 1     | ASSEMBLY |
| 10 | CARBURETOR STUD BOLT      | JF340-A-10A |            | 2        | 2     |          |
| 11 | CYLINDER HEAD SEALING PAD | JF340-A-11  | JF390-A-11 | 1        | 1     |          |
| 12 | DOWEL PIN (φ 10×φ 12×20)  | JF340-A-12  |            | 2        | 2     |          |
| 13 | BREATHER TUBE             | JF340-A-13A |            | 1        | 1     |          |

## Cylinder barrel

2

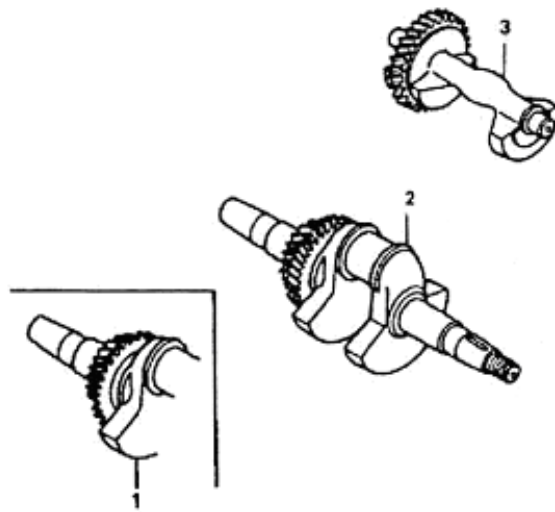


| SN | DESCRIPTION               | CODE NO.   |            | QTY/UNIT |       | REMARK   |
|----|---------------------------|------------|------------|----------|-------|----------|
|    |                           | JF340      | JF390      | JF340    | JF390 |          |
| 1  | FLANGE BOLT (M6×14)       | JF340-B-01 |            | 3        | 3     |          |
| 2  | OIL LEVEL SWITCH ASSY.    | JF240-B-02 |            | 1        | 1     | ASSEMBLY |
| 3  | O-RING (14mm)             | JF240-B-03 |            | 1        | 1     |          |
| 4  | FLANGE NUT (10 mm)        | JF340-B-02 |            | 1        | 1     |          |
| 5  | CRANK CASE                | JF340-B-03 | JF390-B-03 | 1        | 1     |          |
| 6  | BALL BEARING (6207)       | JF340-B-04 |            | 1        | 1     |          |
| 7  | WASHER ( φ 8.3× φ 17×1)   | JF340-B-05 |            | 1        | 1     |          |
| 8  | LOCK PIN (10 mm)          | JF340-B-06 |            | 1        | 1     |          |
| 9  | GOVERNOR ARM SHAFT        | JF340-B-07 |            | 1        | 1     |          |
| 10 | OIL SEAL ( φ 8× φ 14×5)   | JF340-B-08 |            | 1        | 1     |          |
| 11 | DRAIN PLUG WASHER (12 mm) | JF340-B-09 |            | 2        | 2     |          |
| 12 | DRAIN PLUG BOLT           | JF340-B-10 |            | 2        | 2     |          |
| 13 | OIL SEAL ( φ 35× φ 52×8)  | JF340-B-11 |            | 1        | 1     |          |
| 14 | OIL PROTECTOR             | JF340-B-12 |            | 1        | 1     |          |
| 15 | BALL BEARING (6202)       | JF340-B-13 |            | 1        | 1     |          |



| SN | DESCRIPTION                                    | CODE NO. |             | QTY/UNIT |       | REMARK |
|----|--|----------|-------------|----------|-------|--------|
|    |  | JF340    | JF390       | JF340    | JF390 |        |
| 1  | OIL SEAL ( $\phi 35 \times \phi 52 \times 8$ ) |          | JF340-B-11  | 1        | 1     |        |
| 2  | FLANGE BOLT (M8 $\times$ 35)                   |          | JF340-C-01  | 7        | 7     |        |
| 3  | OIL SCALE                                      |          | JF340-C-02A | 2        | 2     |        |
| 4  | OIL SCALE SEAL RING                            |          | JF340-C-03  | 2        | 2     |        |
| 5  | CRANKCASE COVER                                |          | JF340-C-04A | 1        | 1     |        |
| 6  | BALL BEARING (6207)                            |          | JF340-B-04  | 1        | 1     |        |
| 7  | BALL BEARING (6202)                            |          | JF340-B-13  | 1        | 1     |        |
| 8  | SLIDER SHAFT                                   |          | JF340-C-05  | 1        | 1     |        |
| 9  | GOVERNOR GEAR WASHER (6 mm)                    |          | JF340-C-06  | 1        | 1     |        |
| 10 | GOVERNOR GEAR                                  |          | JF340-C-07  | 1        | 1     |        |
| 11 | SLIDER WASHER (6 mm)                           |          | JF340-C-08  | 1        | 1     |        |
| 12 | GOVERNOR SLIDER                                |          | JF340-C-09  | 1        | 1     |        |
| 13 | CRANKCASE COVER PAD                            |          | JF340-C-10  | 1        | 1     |        |
| 14 | DOWEL PIN (8 $\times$ 12)                      |          | JF240-C-11  | 2        | 2     |        |

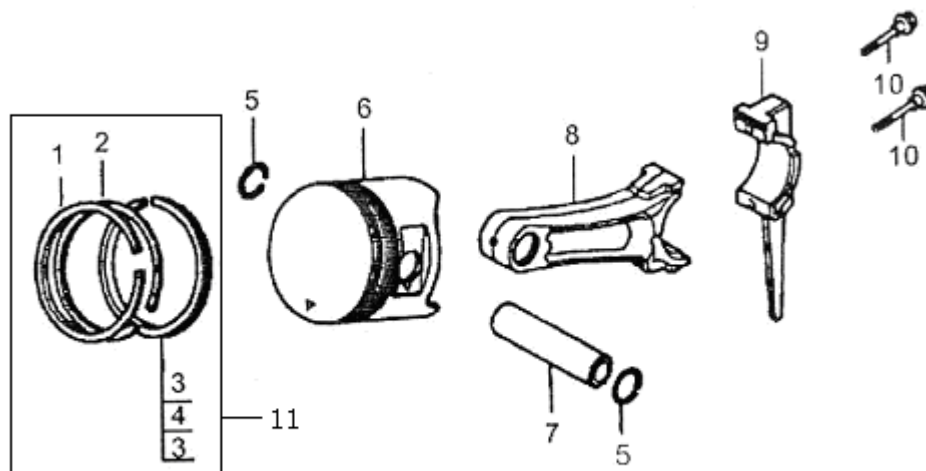
Crankshaft system assy.



| SN | DESCRIPTION      | CODE NO.   |       | QTY/UNIT |       | REMARK     |
|----|------------------|------------|-------|----------|-------|------------|
|    |                  | JF340      | JF390 | JF340    | JF390 |            |
| 1  | CRANK            | JF340-D-01 |       | 1        | 1     |            |
| 2  | CRANKSHAFT COMP. | JF340-D-02 |       | 1        | 1     | AS REQUEST |
| 3  | BALANCE SHAFT    | JF340-D-03 |       | 1        | 1     |            |

Piston and connecting rod system assy.

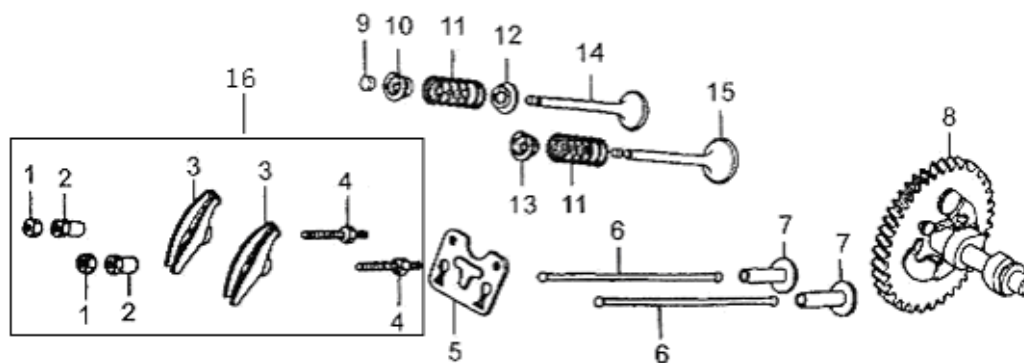
5



| SN | DESCRIPTION             | CODE NO.   |            | QTY/UNIT |       | REMARK |
|----|-------------------------|------------|------------|----------|-------|--------|
|    |                         | JF340      | JF390      | JF340    | JF390 |        |
| 1  | COMPRESSION RING A      | JF340-E-01 | JF390-E-01 | 1        | 1     |        |
| 2  | COMPRESSION RING B      | JF340-E-02 | JF390-E-02 | 1        | 1     |        |
| 3  | OIL RING A              | JF340-E-03 | JF390-E-03 | 2        | 2     |        |
| 4  | OIL RING B              | JF340-E-04 | JF390-E-04 | 1        | 1     |        |
| 5  | PISTON PIN CLIP (20 mm) | JF240-E-05 |            | 2        | 2     |        |
| 6  | PISTON                  | JF340-E-05 | JF390-E-05 | 1        | 1     |        |
| 7  | PISTON PIN              | JF340-E-06 | JF390-E-06 | 1        | 1     |        |
| 8  | CONNECTING ROD          | JF340-E-07 |            | 1        | 1     |        |
| 9  | CONNECTING COVER        | JF340-E-08 |            | 1        | 1     |        |
| 10 | CONNECTING ROD BOLT     | JF340-E-09 |            | 2        | 2     |        |
| 11 | PISTON RING SET         | JF340-E-10 | JF390-E-10 | 1        | 1     |        |

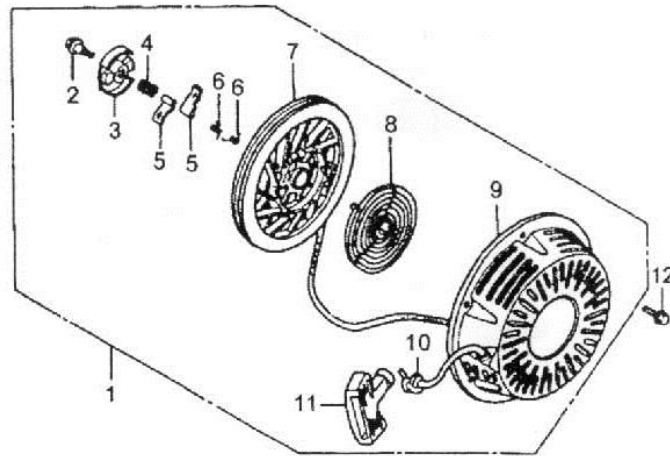
## Camshaft system assy.

6

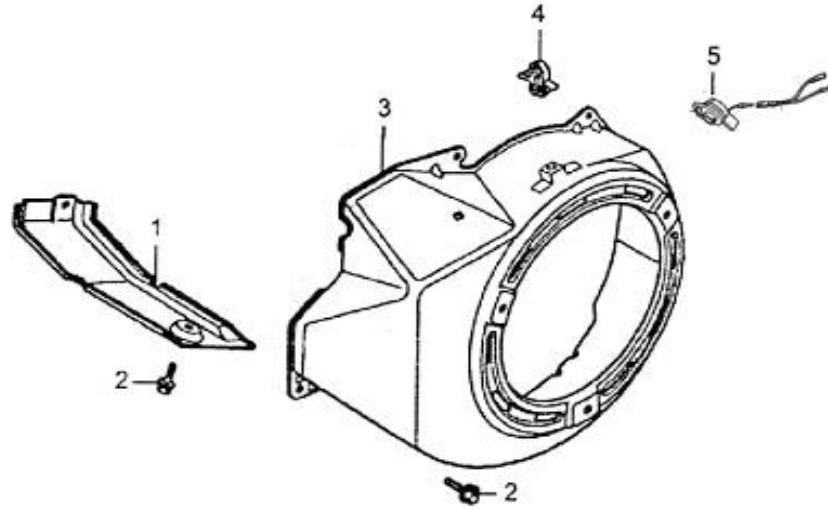


| SN | DESCRIPTION               | CODE NO.   |            | QTY/UNIT |       | REMARK   |
|----|---------------------------|------------|------------|----------|-------|----------|
|    |                           | JF340      | JF390      | JF340    | JF390 |          |
| 1  | LOCKNUT                   | JF340-F-01 |            | 2        | 2     |          |
| 2  | ADJUSTING NUT             | JF340-F-02 |            | 2        | 2     |          |
| 3  | ROCKER ARM                | JF340-F-03 |            | 2        | 2     |          |
| 4  | ROCKER BOLT (8 mm)        | JF340-F-04 |            | 2        | 2     |          |
| 5  | PUSH ROD GUIDE PLATE      | JF340-F-05 |            | 1        | 1     |          |
| 6  | ROD PUSH                  | JF240-F-06 |            | 2        | 2     |          |
| 7  | CAM FOLLOWER              | JF240-F-07 |            | 2        | 2     |          |
| 8  | CAMSHAFT                  | JF270-F-08 | JF390-F-08 | 1        | 1     |          |
| 9  | EX. VALVE HELMET          | JF340-F-06 |            | 1        | 1     |          |
| 10 | EX. VALVE SPRING RETAINER | JF340-F-07 |            | 1        | 1     |          |
| 11 | VALVE SPRING              | JF340-F-08 |            | 2        | 2     |          |
| 12 | VALVE SPRING SEAT         | JF340-F-09 |            | 2        | 2     |          |
| 13 | IN. VALVE SPRING RETAINER | JF340-F-10 |            | 1        | 1     |          |
| 14 | EX. VALVE                 | JF340-F-11 |            | 1        | 1     |          |
| 15 | IN. VALVE                 | JF340-F-12 |            | 1        | 1     |          |
| 16 | ROCKER ASSY.              | JF340-F-13 |            | 1        | 1     | ASSEMBLY |

Recoil starter system assy.



| SN | DESCRIPTION                 | CODE NO.          |       | QTY/UNIT |          | REMARK          |
|----|-----------------------------|-------------------|-------|----------|----------|-----------------|
|    |                             | JF340             | JF390 | JF340    | JF390    |                 |
| 1  | <b>RECOIL STARTER ASSY.</b> | <b>JF340-G-01</b> |       | <b>1</b> | <b>1</b> | <b>ASSEMBLY</b> |
| 2  | CENTER SCREW                | JF340-G-02        |       | 1        | 1        |                 |
| 3  | SPRING RETAINER             | JF340-G-03        |       | 1        | 1        |                 |
| 4  | FRICITION SPRING            | JF340-G-04        |       | 1        | 1        |                 |
| 5  | STARTER RATCHET             | JF340-G-05        |       | 2        | 2        |                 |
| 6  | RATCHET SPRING              | JF340-G-06        |       | 2        | 2        |                 |
| 7  | RECOIL STARTER REEL         | JF340-G-07        |       | 1        | 1        |                 |
| 8  | START RETURN SPRING         | JF340-G-08        |       | 1        | 1        |                 |
| 9  | RECOIL STARTER CASE COMP.   | JF340-G-09        |       | 1        | 1        |                 |
| 10 | RECOIL STARTER ROPE         | JF340-G-10        |       | 1        | 1        |                 |
| 11 | STARTER GRIP                | JF340-G-11        |       | 1        | 1        |                 |
| 12 | FLANGE BOLT (M6×8)          | JF340-G-12        |       | 3        | 3        |                 |

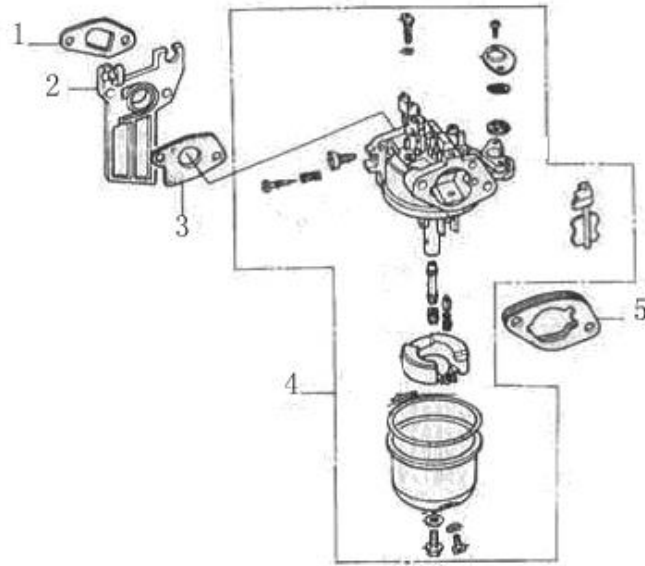


| SN | DESCRIPTION              | CODE NO.   |       | QTY/UNIT |       | REMARK |
|----|--------------------------|------------|-------|----------|-------|--------|
|    |                          | JF340      | JF390 | JF340    | JF390 |        |
| 1  | SHROUD                   | JF340-H-01 |       | 1        | 1     |        |
| 2  | FLANGE BOLT (M6×14)      | JF340-H-02 |       | 6        | 6     |        |
| 3  | FAN COVER COMP.          | JF340-H-03 |       | 1        | 1     |        |
| 4  | CORD CLAMPER             | JF340-H-04 |       | 1        | 1     |        |
| 5  | ENGINE STOP SWITCH ASSY. | JF340-H-05 |       | 1        | 1     |        |

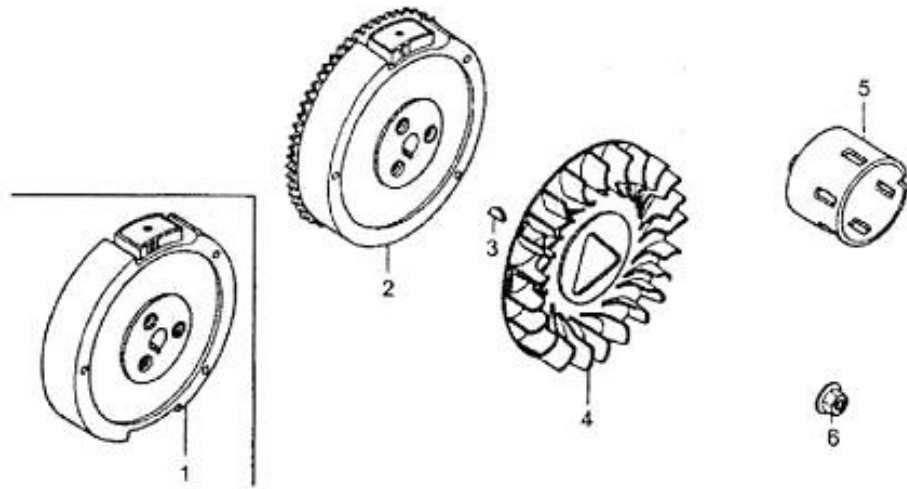


## Carburetor system assy.

9

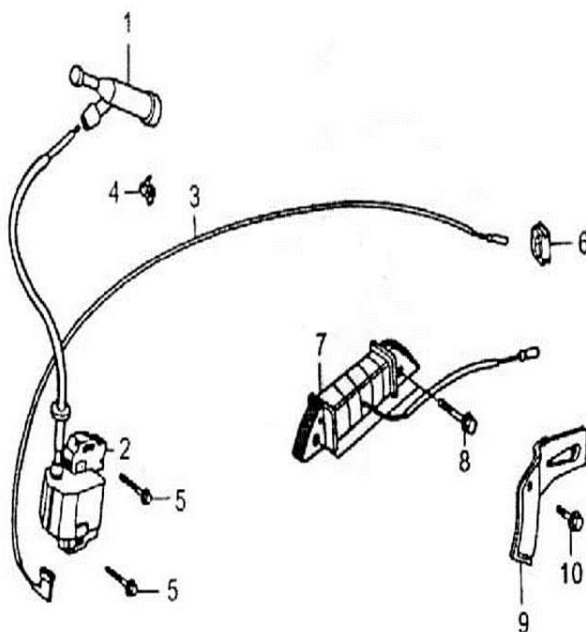


| SN | DESCRIPTION                 | CODE NO.           |                    | QTY/UNIT |          | REMARK          |
|----|-----------------------------|--------------------|--------------------|----------|----------|-----------------|
|    |                             | JF340              | JF390              | JF340    | JF390    |                 |
| 1  | INTAKE PIPE GASKET          | JF340-I-01         |                    | 1        | 1        |                 |
| 2  | CARBURETOR INSULATING PLATE | JF340-I-02         |                    | 1        | 1        |                 |
| 3  | CARBURETOR PAPER GASKET     | JF340-I-03         |                    | 1        | 1        |                 |
| 4  | <b>CARBURETOR ASSY.</b>     | <b>JF340-I-04A</b> | <b>JF390-I-04A</b> | <b>1</b> | <b>1</b> | <b>ASSEMBLY</b> |
| 5  | CARBURETOR IRON GASKET      | JF340-I-05         |                    | 1        | 1        |                 |

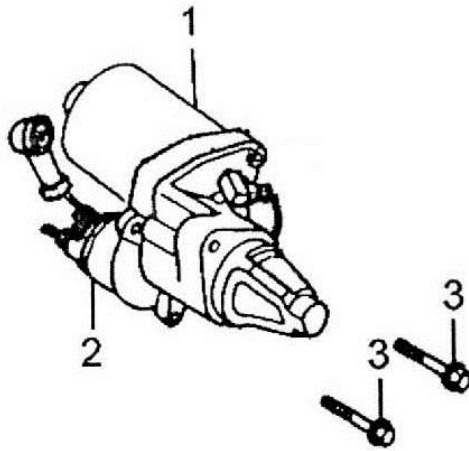


| SN | DESCRIPTION          | CODE NO.    |       | QTY/UNIT |       | REMARK             |
|----|----------------------|-------------|-------|----------|-------|--------------------|
|    |                      | JF340       | JF390 | JF340    | JF390 |                    |
| 1  | FLYWHEEL             | JF340-J-01A |       | 1        | 1     |                    |
| 2  | FLYWHEEL             | JF340-J-01B |       | 1        | 1     | FOR ELECTRIC START |
| 3  | SPECIAL WOODRUFF KEY | JF340-J-02  |       | 1        | 1     |                    |
| 4  | COOLING FAN          | JF340-J-03  |       | 1        | 1     |                    |
| 5  | STARTER PULLEY       | JF340-J-04  |       | 1        | 1     |                    |
| 6  | FLYWHEEL NUT (M16)   | JF340-J-05  |       | 1        | 1     |                    |

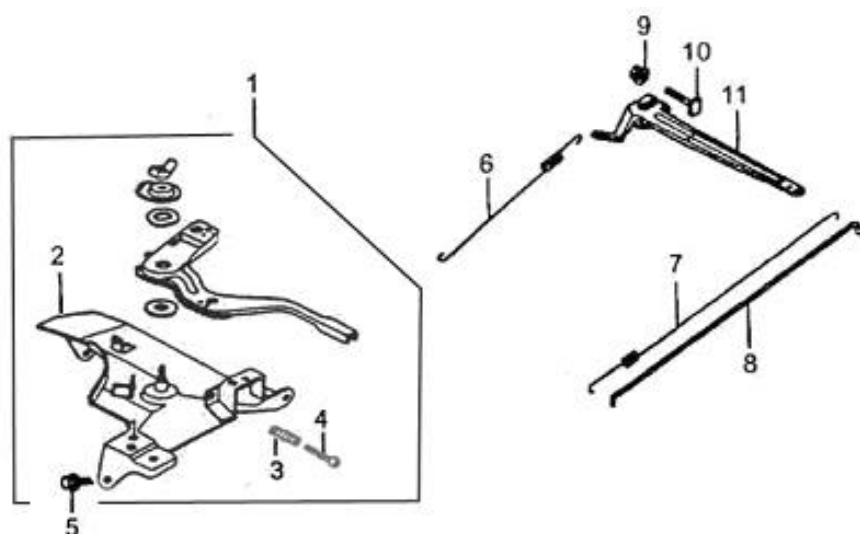
## Ignition System Assy.



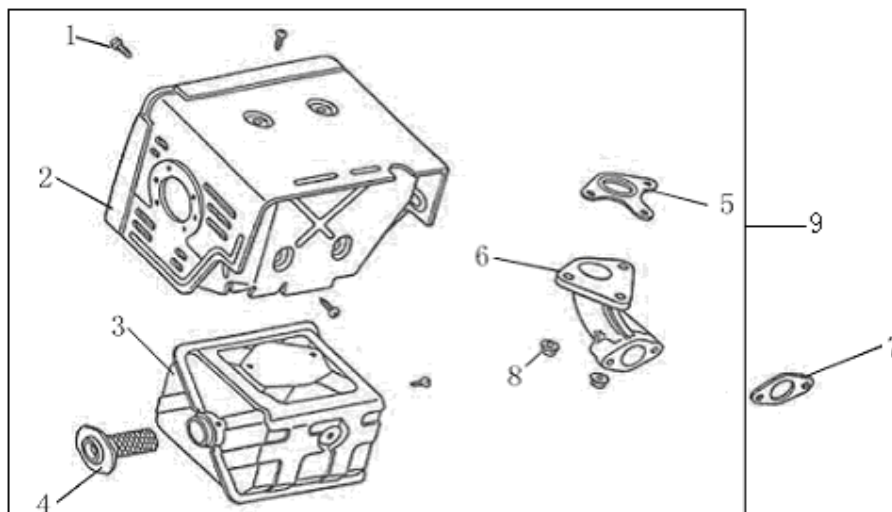
| SN | DESCRIPTION             | CODE NO.   |       | QTY/UNIT |       | REMARK                |
|----|-------------------------|------------|-------|----------|-------|-----------------------|
|    |                         | JF340      | JF390 | JF340    | JF390 |                       |
| 1  | PLENUM CAP              | JF340-K-01 |       | 1        | 1     |                       |
| 2  | IGNITION COIL ASSY.     | JF340-K-02 |       | 1        | 1     |                       |
| 3  | STOP SWITCH CORD        | JF340-K-03 |       | 1        | 1     |                       |
| 4  | STOP SWITCH CORD HOLDER | JF340-K-04 |       | 1        | 1     |                       |
| 5  | FLANGE BOLT (M6×25)     | JF340-K-05 |       | 2        | 2     |                       |
| 6  | CORD GROMMET            | JF340-K-06 |       | 1        | 1     |                       |
| 7  | CHARGE COIL ASSY.       | JF340-K-07 |       | 1        | 1     | FOR ELECTRIC<br>START |
| 8  | FLANGE BOLT (M6×40)     | JF340-K-08 |       | 2        | 2     |                       |
| 9  | CORD CLAMPER            | JF340-K-09 |       | 1        | 1     |                       |
| 10 | FLANGE BOLT (M6×20)     | JF340-K-10 |       | 1        | 1     |                       |



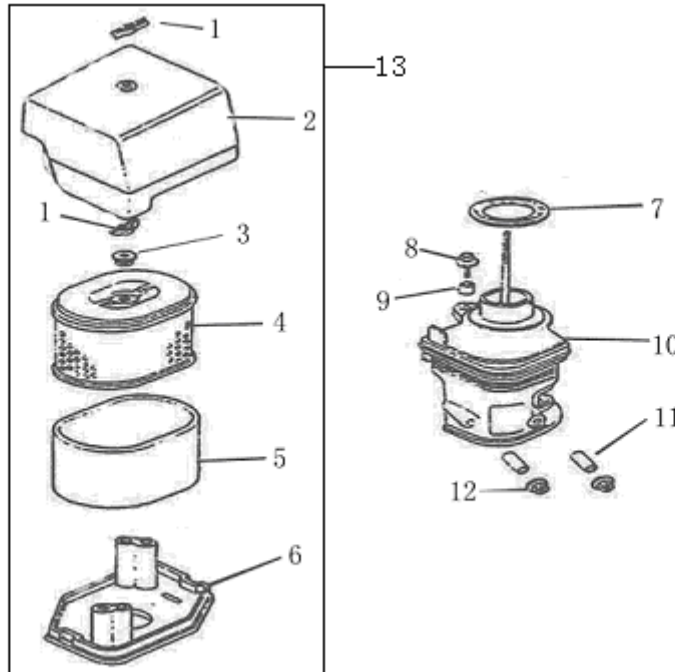
| SN | DESCRIPTION         | CODE NO.   |       | QTY/UNIT |       | REMARK             |
|----|---------------------|------------|-------|----------|-------|--------------------|
|    |                     | JF340      | JF390 | JF340    | JF390 |                    |
| 1  | UNIT STARTER MOTOR  | JF340-L-01 |       | 1        | 1     | FOR ELECTRIC START |
| 2  | CONTACTOR ASSY.     | JF340-L-02 |       | 1        | 1     |                    |
| 3  | FLANGE BOLT (M8×35) | JF340-L-03 |       | 2        | 2     |                    |



| SN | DESCRIPTION              | CODE NO.    |       | QTY/UNIT |       | REMARK |
|----|--------------------------|-------------|-------|----------|-------|--------|
|    |                          | JF340       | JF390 | JF340    | JF390 |        |
| 1  | CONTROL ASSY.            | JF340-M-01A |       | 1        | 1     |        |
| 2  | CONTROL BASE COMP.       | JF340-M-02A |       | 1        | 1     |        |
| 3  | CONTROL ADJUSTING SPRING | JF340-M-03  |       | 1        | 1     |        |
| 4  | CROSS POND SCREW (M5×34) | JF340-M-04  |       | 1        | 1     |        |
| 5  | FLANGE BOLT (M6×14)      | JF340-M-05  |       | 1        | 1     |        |
| 6  | GOVERNOR SPRING          | JF340-M-06  |       | 1        | 1     |        |
| 7  | THROTTLE RETURN SPRING   | JF340-M-07  |       | 1        | 1     |        |
| 8  | GOVERNOR ROD             | JF340-M-08  |       | 1        | 1     |        |
| 9  | FLANGE NUT (M6)          | JF340-M-09  |       | 1        | 1     |        |
| 10 | GOVERNOR ARM BOLT (M6)   | JF340-M-10  |       | 1        | 1     |        |
| 11 | CONTROL ARM              | JF340-M-11  |       | 1        | 1     |        |

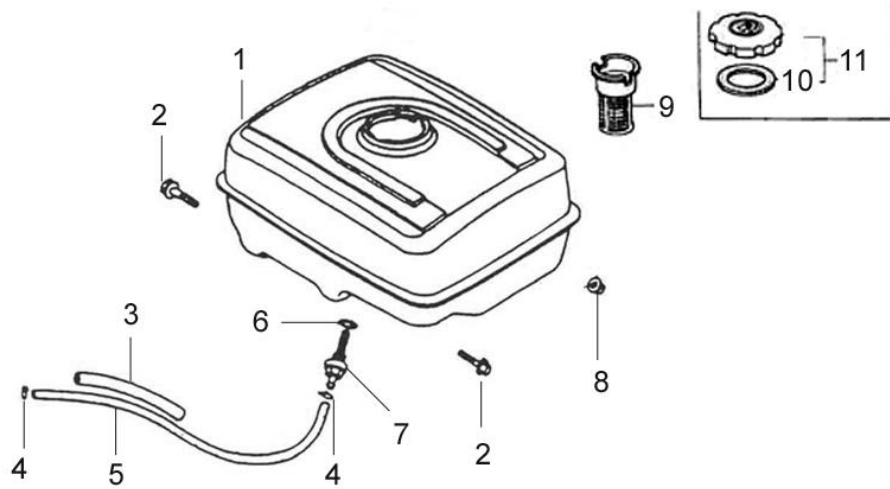


| SN | DESCRIPTION             | CODE NO.   |       | QTY/UNIT |       | REMARK   |
|----|-------------------------|------------|-------|----------|-------|----------|
|    |                         | JF340      | JF390 | JF340    | JF390 |          |
| 1  | TAPPING SCREW (M5×8)    | JF340-N-01 |       | 4        | 4     | Q235A    |
| 2  | MUFFLER PROTECTOR COMP. | JF340-N-02 |       | 1        | 1     |          |
| 3  | MUFFLER COMP.           | JF340-N-03 |       | 1        | 1     |          |
| 4  | SPARK ARRESTER (SILENT) | JF340-N-04 |       | 1        | 1     |          |
| 5  | EX. PIPE GASKET         | JF340-N-05 |       | 1        | 1     |          |
| 6  | EX. PIPE COMP.          | JF340-N-06 |       | 1        | 1     |          |
| 7  | MUFFLER GASKET          | JF340-N-07 |       | 1        | 1     |          |
| 8  | FLANGE NUT (M8)         | JF340-N-08 |       | 2        | 2     |          |
| 9  | MUFFLER ASSY.           | JF240-N-09 |       | 1        | 1     | ASSEMBLY |



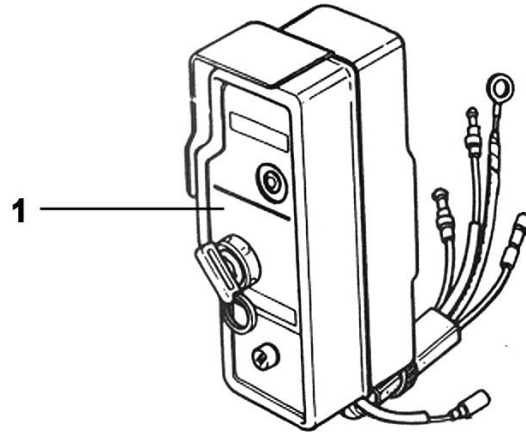
| SN | DESCRIPTION             | CODE NO.   |       | QTY/UNIT |       | REMARK   |
|----|-------------------------|------------|-------|----------|-------|----------|
|    |                         | JF340      | JF390 | JF340    | JF390 |          |
| 1  | AIR CLEANER COVER NUT   | JF340-O-01 |       | 2        | 2     |          |
| 2  | AIR CLEANER COVER       | JF340-O-02 |       | 1        | 1     |          |
| 3  | AIR CLEANER GROMMER     | JF340-O-03 |       | 1        | 1     |          |
| 4  | AIR CLEANER ELEMENT     | JF340-O-04 |       | 1        | 1     |          |
| 5  | OUTER FILTER            | JF340-O-05 |       | 1        | 1     |          |
| 6  | SILENCER NOSE           | JF340-O-06 |       | 1        | 1     |          |
| 7  | ELBOW PACKING           | JF340-O-07 |       | 1        | 1     |          |
| 8  | FLANGE BOLT (M6×20)     | JF340-O-08 |       | 1        | 1     |          |
| 9  | AIR CLEANER COLLAR      | JF340-O-09 |       | 1        | 1     |          |
| 10 | AIR CLEANER ELBOW COMP. | JF340-O-10 |       | 1        | 1     |          |
| 11 | AIR CLEANER COLLAR      | JF340-O-11 |       | 1        | 1     |          |
| 12 | FLANGE NUT (M8)         | JF340-O-12 |       | 2        | 2     |          |
| 13 | AIR CLEANER ASSY.       | JF340-O-13 |       | 1        | 1     | ASSEMBLY |

Fuel tank system assy.



| SN | DESCRIPTION             | CODE NO.   |       | QTY/UNIT |       | REMARK |
|----|-------------------------|------------|-------|----------|-------|--------|
|    |                         | JF340      | JF390 | JF340    | JF390 |        |
| 1  | FUEL TANK ASSY.         | JF340-P-01 |       | 1        | 1     |        |
| 2  | FLANGE BOLT (M8×25)     | JF340-P-02 |       | 1        | 2     |        |
| 3  | SUPPORTER RUBBER        | JF340-P-03 |       | 1        | 1     |        |
| 4  | TUBE CLIP               | JF340-P-04 |       | 2        | 2     |        |
| 5  | FUEL TUBE               | JF340-P-05 |       | 1        | 1     |        |
| 6  | O-RING (14mm)           | JF340-P-06 |       | 1        | 1     |        |
| 7  | FUEL TANK JOINT         | JF340-P-07 |       | 1        | 1     |        |
| 8  | FLANGE NUT (M6)         | JF340-P-08 |       | 1        | 1     |        |
| 9  | FUEL FILTER             | JF340-P-09 |       | 1        | 1     |        |
| 10 | FUEL FILLER CAP PACKING | JF168-N-11 |       | 1        | 1     |        |
| 11 | FUEL FILLER CAP COMP.   | JF340-P-10 |       | 1        | 1     |        |





| SN | DESCRIPTION       | CODE NO.   |       | QTY/UNIT |       | REMARK |
|----|-------------------|------------|-------|----------|-------|--------|
|    |                   | JF340      | JF390 | JF340    | JF390 |        |
| 1  | CONTROL BOX ASSY. | JF390-Q-01 |       | 1        | 1     |        |