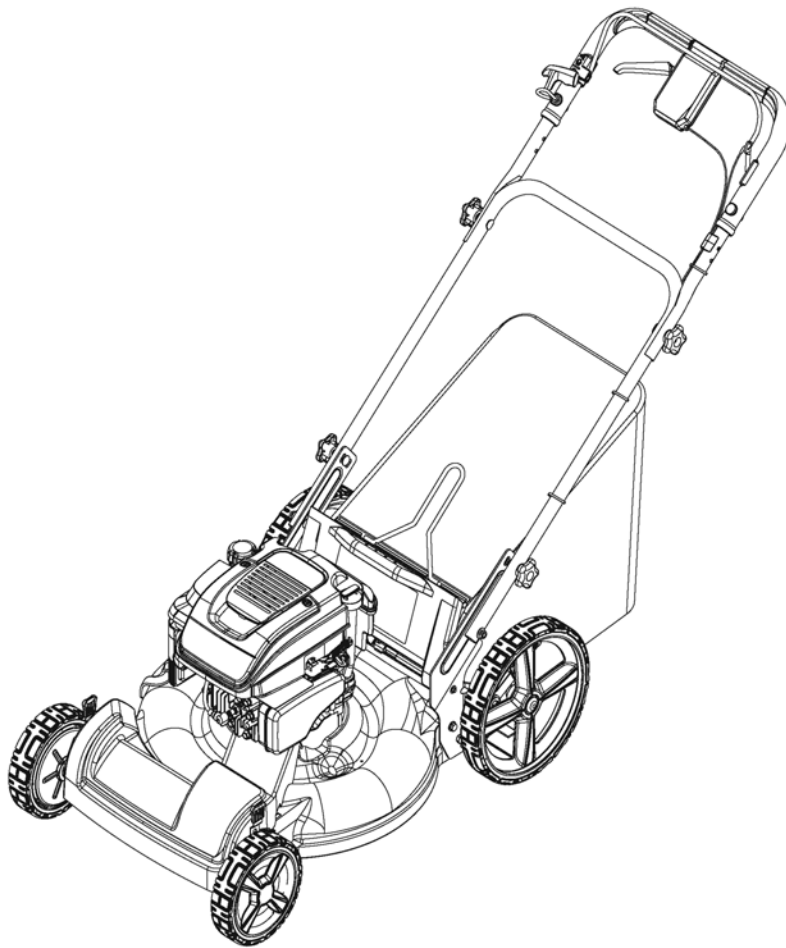


Parts Manual for

SNAPPER®

22" VARIABLE SPEED HIGH WHEEL WALK BEHIND MOWERS

<i>Model No.</i>	<i>Description</i>
7800872	ESPV22675HW

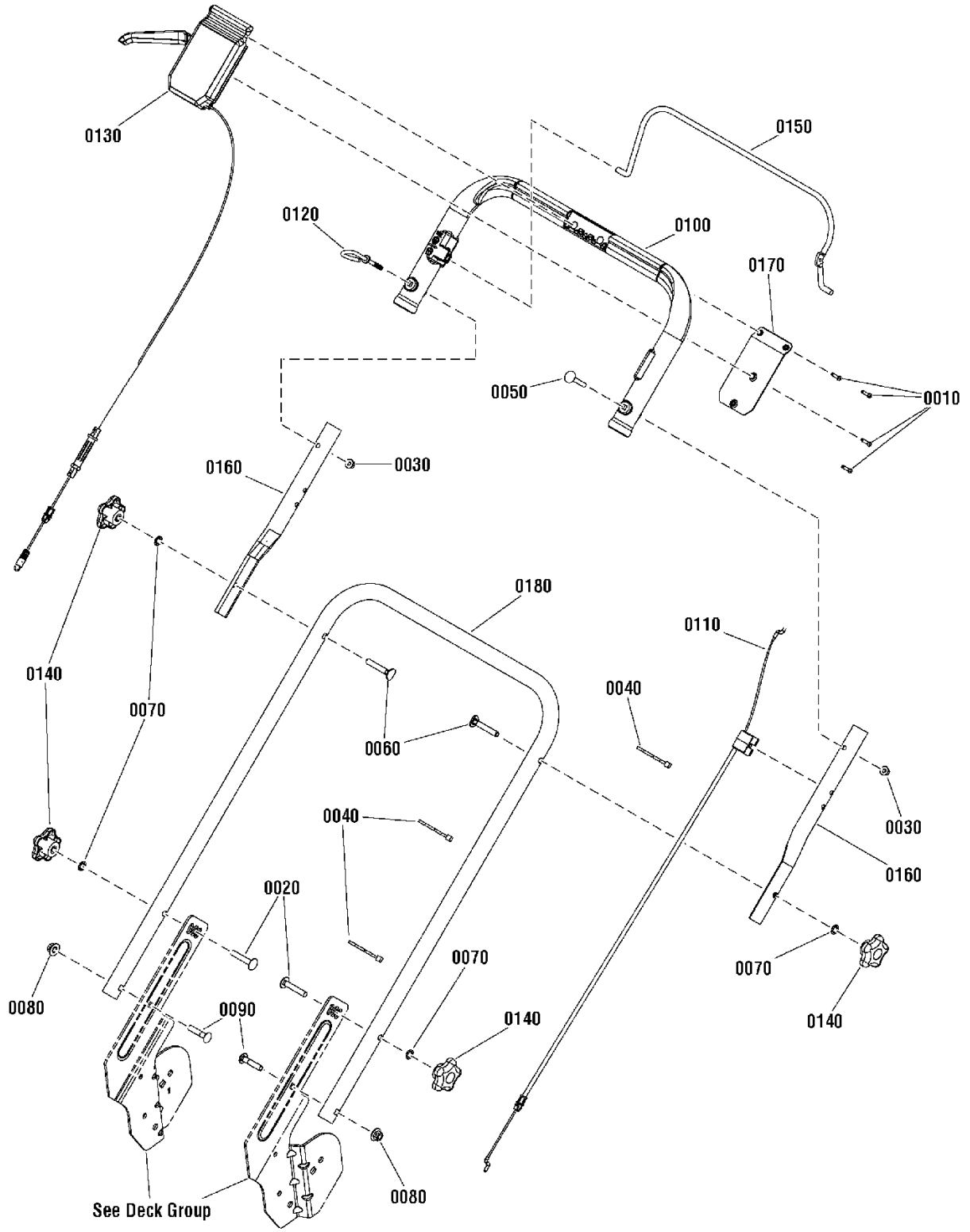


Briggs & Stratton Yard Power Products Group

535 Macon Road
McDonough, GA, 30253 U.S.A.
800-935-2967

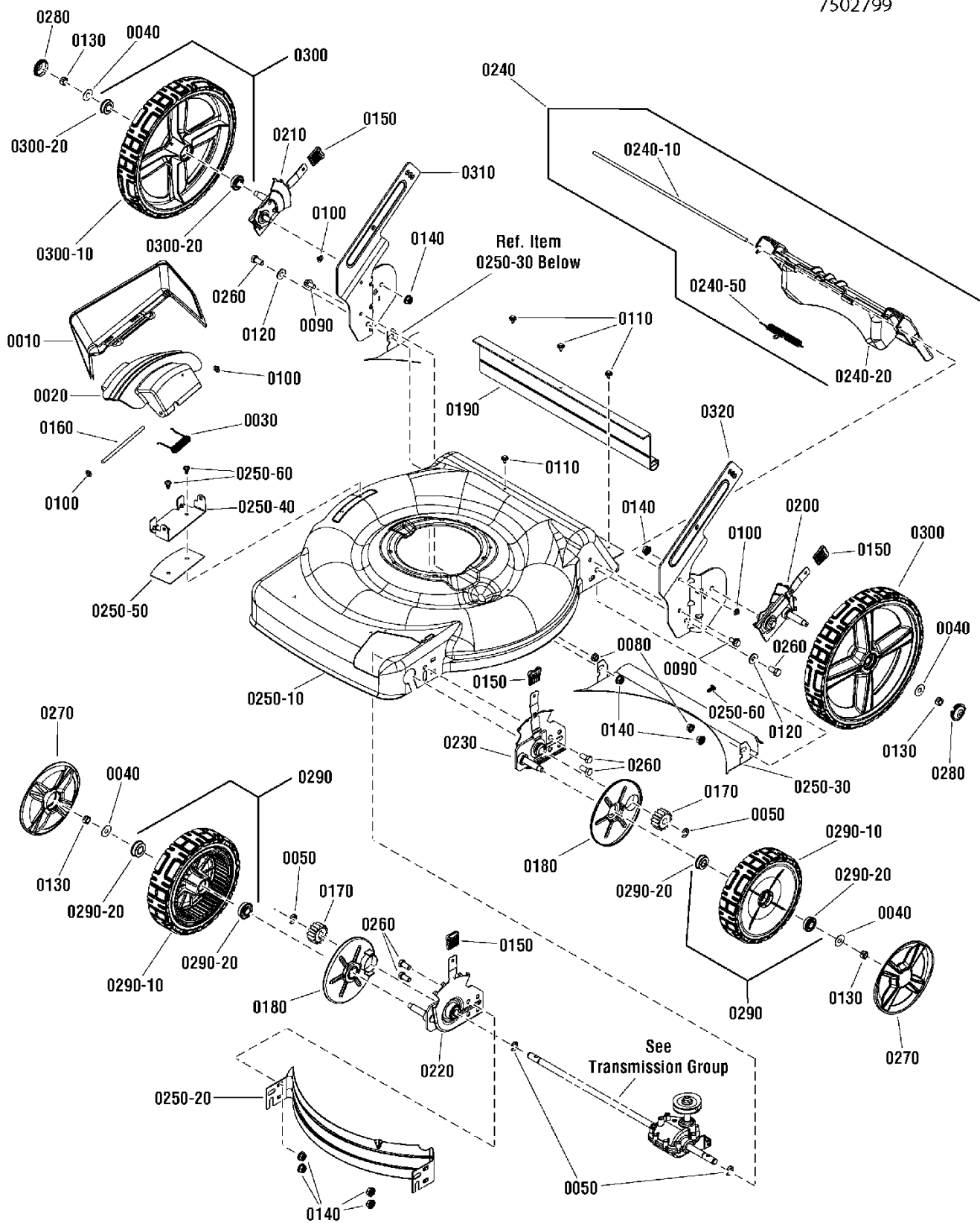
Manual No.	7105681
Revision: -	4/9/2012

PAGE	GROUP
4	Handles Group
6	Deck Group
8	Engine & Blade Group
10	Transmission Assembly
12	Grass Catcher Assembly
14	Decals Group



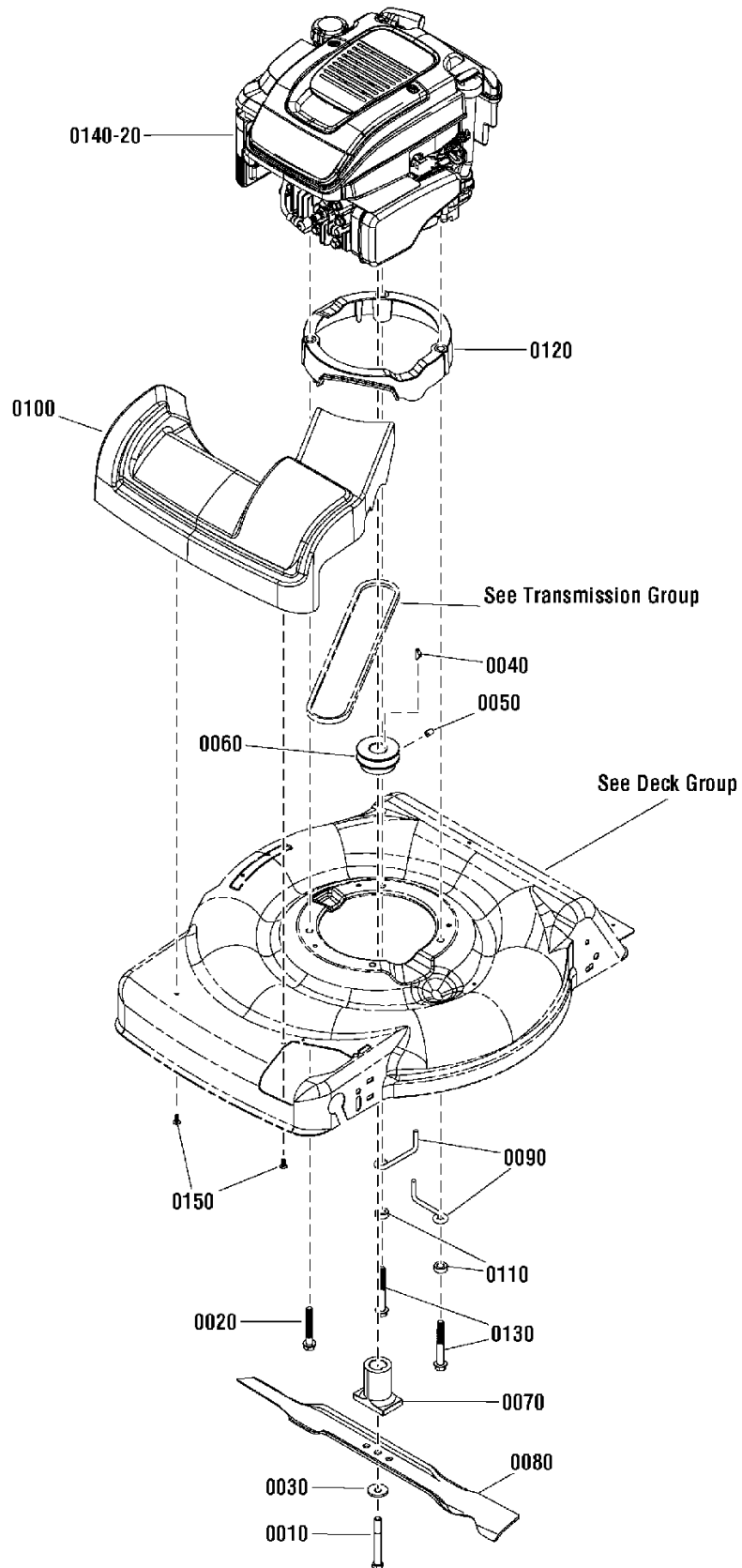
Item	Part No	Qty	Description
0010	95050	4	SCREW, Pan Head, Thread Rolling
0020	1931338	2	BOLT, 5/16-18 x 1-3/4" Round Head Square Neck Carriage
0030	2860694	2	NUT, 1/4-20, Hex Flange Nyloc, YZ
0040	7024649	3	WIRE TIE, 11 Inch Standard Black Nylon
0050	7090015	1	BOLT, 1/4-20 x 1-3/4 Round Head Square Neck, GR 2
0060	7091189	2	BOLT, 5/16-18 x 2 Curved Head Square Neck, GR 2
0070	7090391	4	WASHER, 5/16" Internal Tooth Lock
0080	7090951	2	NUT, 5/16-18 Large Head Center Lock, Black
0090	7090958	2	BOLT, 5/16-18 x 1-1/2" Round Head Short Square Neck, GR 5
0100	7101312	1	HANDLE, Plastic Upper, WBM
0110	7101395	1	CABLE, Bail, 22" Walk-Behind-Mower
0120	7101410	1	GUIDE, Rope (1/4-20 threads)
0130	7101415	1	ASSEMBLY, Control Head, 22" WBM, Variable Speed, Hi-Wheel
0140	7105085	4	KNOB, Handle, 5 Prong (5/16-18 threads)
0150	7101321BH	1	BAIL, Plastic Handle, WBM
0160	7300649BH	2	HANDLE, Connecting, 21" / 22" WBM
0170	7300670A	1	PLATE, Control Panel, Plastic Handle
0180	7301190BH	1	HANDLE, Lower, 1", 22" WBM, HW

Footnotes:



Item	Part No	Qty	Description
0010	721681	1	CHUTE, Side, Plastic, Black
0020	721682	1	COVER, Mulch, Plastic, Black
0030	722507	1	SPRING, Torsion
0040	722604	4	WASHER, 1" OD x .387 ID, Flat
0050	7014341	4	RETAINING RING, (.392" ID x .042" wide) (Waldes 5133-50 or equivalent)
0080	7090585	2	NUT, 5/16-18 Hex Flange Lock, GR 5
0090	7090606	2	BOLT, 5/16-18 x 5/8" Hex Flange Lock, ZP
0100	7091020	4	PUSHNUT, 1/4"
0110	7091286	4	SCREW, #10-24 x 1/2" Hex Washer Sems, BZ
0120	7091528	2	WASHER, 3/8 x 7/8 x .083, Flat, YZ
0130	7091585	4	NUT, 3/8-16 Hex Center Lock, YZ
0140	7091619	8	NUT, 3/8-16 Hex Flange Lock, YZ
0150	7103793	4	GRIP, Height Latch, Black
0160	7101067	1	ROD, Pivot
0170	7101207	2	GEAR, Pinion, 22" WBM, FWD
0180	7101402	2	SHIELD, Dust, 22" WBM, Front Wheel Drive
0190	7102422	1	GUARD, Rear, 22" Hi-Wheel
0200	7501055	1	ASSEMBLY, Height-of-Cut, Left Rear, 22" WBM
0210	7501056	1	ASSEMBLY, Height-of-Cut, Right Rear, 22" WBM
0220	7501057	1	ASSEMBLY, Height-of-Cut, Right Front, 22" WBM, Propelled
0230	7501058	1	ASSEMBLY, Height-of-Cut, Left Front, 22" WBM, Propelled
0240	7500416	1	ASSEMBLY, Door, 22"
0240-10	7101070	1	ROD, Pivot, Rear Door
0240-20	7101243	1	DOOR, Rear, 22"
0240-50	7101461	1	SPRING, Torsion, Rear Door, 22" WBM
0250-10	7300400	1	DECK, 22" Walk, 3-N-1
0250-20	7300440	1	BAFFLE, Front, 22" WBM
0250-30	7300854	1	BAFFLE, Rear, 22" Deck
0250-40	7300855	1	BRACKET, Chute
0250-50	7300856	1	PLATE, Mulch, 22 RB, Scotts
0250-60	7900067	2	SCREW, 1/4-20 x .550 Pan Head Torx (T-30)
0260	7091086	6	SCREW, 3/8-16 x 3/4" Hex Head Cap, GR 5 ZP
0270	7101350	2	HUBCAP, 8" & 9" Spoked Wheel, Snapper Cool Gray
0280	7101393	2	HUBCAP, 12" Wheel, Snapper Cool Gray
0290	7500542	2	ASSEMBLY, Drive Wheel, 8 x 2, BB, Snapper Charcoal Gray
0290-10	7101383	1	WHEEL, 8" x 2" Drive, Snapper Tread, Charcoal Gray
0290-20	7101380	2	BALL BEARING, 1-1/8" OD Flange
0300	7500546	2	ASSEMBLY, Wheel, 12 x 2" Idler, BB, Snapper Cool Gray
0300-10	7101378	1	WHEEL, 12" x 2", Snapper Tread, Charcoal Gray
0300-20	7101380	2	BALL BEARING, 1-1/8" OD Flange
0310	7301196BH	1	BRACKET, Lower Handle, 22" Hi-Wheel, RH
0320	7301197BH	1	BRACKET, Lower Handle, 22" Hi-Wheel, LH

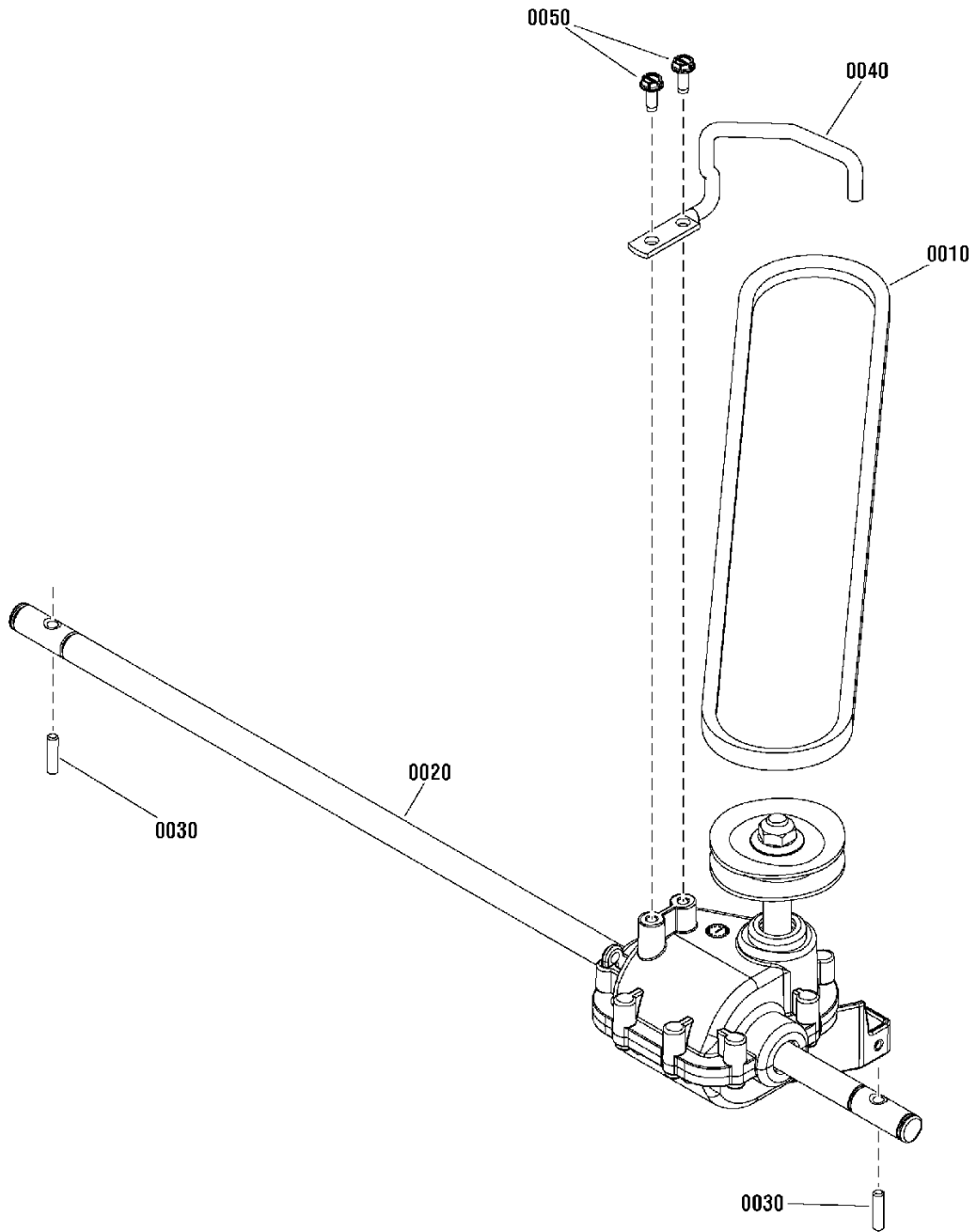
Footnotes:



Item	Part No	Qty	Description
0010	720209	1	BOLT, 3/8-24 x 3-1/4" Hex Head Cap, Gr 8
0020	720351	1	BOLT, 3/8-16 x 2-1/2" Hex Washer Taptite
0030	721890	1	WASHER, .38" ID. X 1.183" OD. Belleville
0040	7091214	1	KEY, Hi-Pro, #605
0050	7092086	1	SET SCREW, 5/16-18 x 1/2 Hex Recess
0060	7105122	1	PULLEY, Engine PM, WBM
0070	7100740	1	BLADE HUB, 22" Deck
0080	7100851	1	BLADE, 22" Walk Mower
0090	7101024	2	BELT GUIDE, Engine, 22" Variable Speed
0100	7101195	1	COVER, Front Deck, 22" Front Wheel Drive
0110	7101302	2	SPACER, Belt Guide, 22" VS
0120	7101449	1	ASSEMBLY, Engine Spacer, 22" WBM, Propelled
0130	7101451	2	SCREW, 3/8-16 x 3" Hex Washer Head Thread Rolling
0140-20	126T02-7268-H1	1	* ENGINE, 675 Series Quantum, Euro, 126T02-7268-H1
0150	7900018	2	SCREW, Round, Washer Head, Torx, Hi-Lo

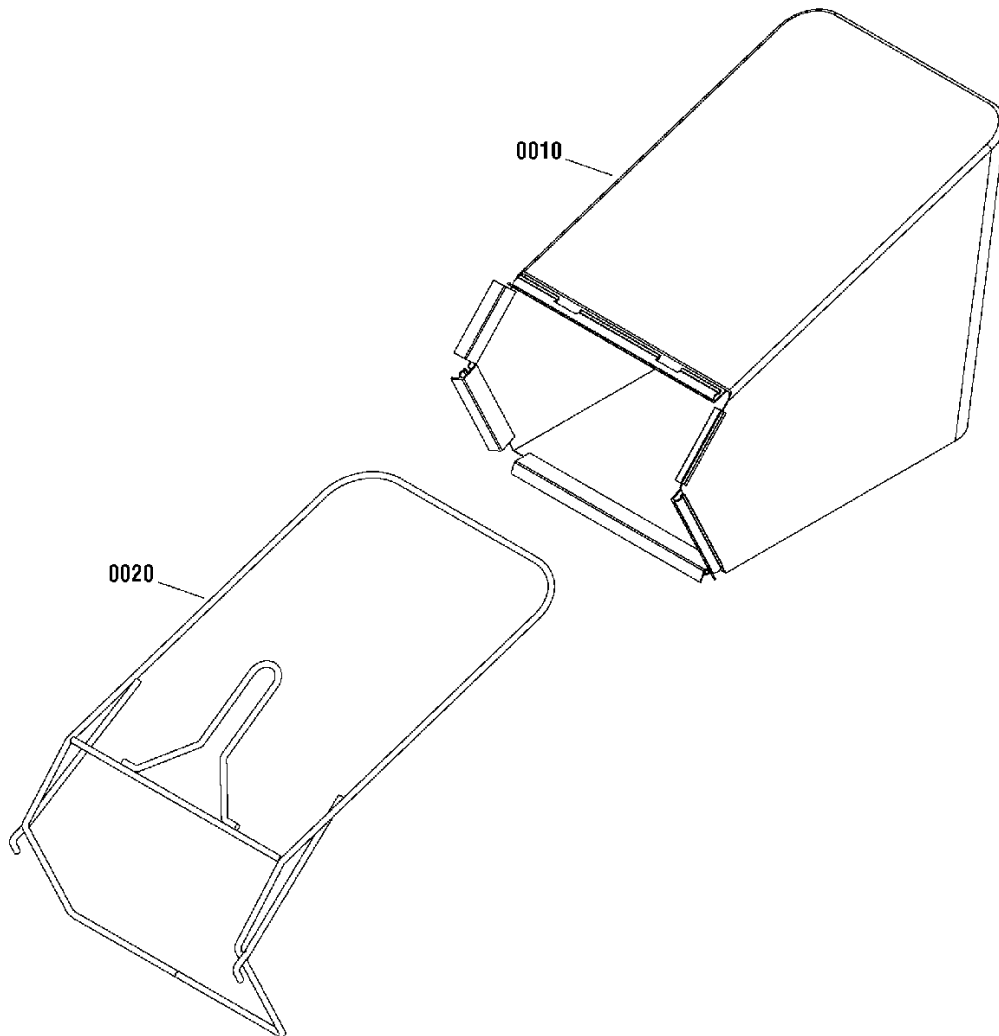
Footnotes:

NOTE: * Purchase engine parts from engine manufacturer dealer.



Item	Part No	Qty	Description
0010	7100913	1	BELT, 3L, Traction Drive, 22" Pivot Handle 3L Section; 31.94 Effective Length
0020	7100857	1	TRANSMISSION, Rocker, 22" WBM
0030	7101270	2	PIN, Drive, 22" WBM, Front Wheel Drive
0040	7101009	1	BELT GUIDE, Transmission, 22" WBM
0050	7900055	2	SCREW, #10-14 x 1/2" Hex Washer Plastite

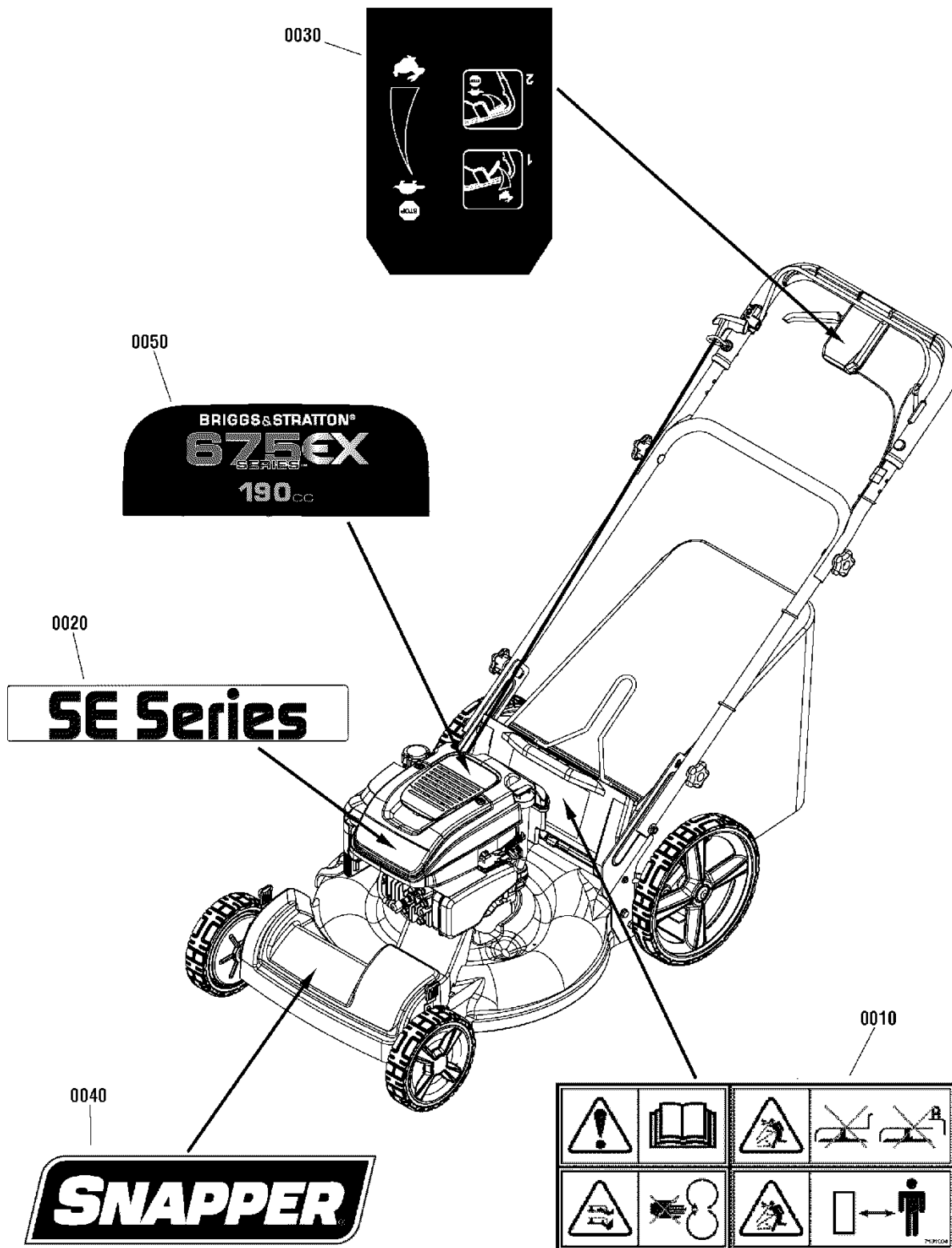
Footnotes:



Grass Catcher Assembly

Item	Part No	Qty	Description
0010	7102573	1	GRASS BAG, 22" Rear Discharge
0020	7101230A	1	BAG FRAME, 22" WBM

Footnotes:



Item	Part No	Qty	Description
0010	7101084	1	DECAL, Warning, Euro, Multi-Panel
0020	7104899	1	DECAL, Snapper "SE" Series
0030	7105307	1	DECAL, Control, Euro
0040	7103963	1	DECAL, Front Shroud, Snapper Logo
0050	881644	1	DECAL, 675 Snapper

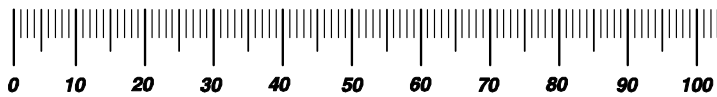
Footnotes:

Hardware Identification & Torque Specifications

Torque Specification Chart								
FOR STANDARD METRIC MACHINE HARDWARE (Tolerance ± 20%)								
Property Class	5.6		8.8		10.9		12.9	
	Class 5.6		Class 8.8		Class 10.9		Class 12.9	
Size Of Hardware	in/lbs		in/lbs		in/lbs		in/lbs	
	ft/lbs	Nm.	ft/lbs	Nm.	ft/lbs	Nm.	ft/lbs	Nm.
M3	5.88	.56	13.44	1.28	19.2	1.80	22.92	2.15
M4	13.44	1.28	30.72	2.90	43.44	4.10	52.56	4.95
M5	26.4	2.50	60.96	5.75	5.97	8.10	7.15	9.7
M6	44.64	4.3	7.3	9.9	10.3	14	12.1	16.5
M7	5.2	7.1	12.1	16.5	16.9	23	19.9	27
M8	7.7	10.5	17.7	24	25	34	29	40
M10	15	21	35	48	50	67	59	81
M12	26	36	61	83	86.2	117	103	140
M14	42	58	101	132	136	185	162	220
M16	64	88	147	200	210	285	250	340
M18	89	121	202	275	287	390	346	470
M20	126	171	290	390	405	550	486	660
M22	169	230	390	530	559	745	656	890
M24	217	295	497	375	708	960	840	1140
M27	320	435	733	995	1032	1400	1239	1680
M30	435	590	995	1350	1401	1900	1681	2280
M33	590	800	1349	1830	1902	2580	2278	3090
M36	759	1030	1740	2360	2441	3310	2935	3980
M39	988	1340	2249	3050	3163	4290	3798	5150

Torque Specification Chart						
FOR STANDARD MACHINE HARDWARE (Tolerance ± 20%)						
Hardware Grade	No Marks		SAE Grade 5		SAE Grade 8	
	SAE Grade 2		SAE Grade 5		SAE Grade 8	
Size Of Hardware	in/lbs		in/lbs		in/lbs	
	ft/lbs	Nm.	ft/lbs	Nm.	ft/lbs	Nm.
8-32	19	2.1	30	3.4	41	4.6
8-36	20	2.3	31	3.5	43	4.9
10-24	27	3.1	43	4.9	60	6.8
10-32	31	3.5	49	5.5	68	7.7
1/4-20	66	7.6	8	10.9	12	16.3
1/4-28	76	8.6	10	13.6	14	19.0
5/16-18	11	15.0	17	23.1	25	34.0
5/16-24	12	16.3	19	25.8	29	34.0
3/8-16	20	27.2	30	40.8	45	61.2
3/8-24	23	31.3	35	47.6	50	68.0
7/16-14	30	40.8	50	68.0	70	95.2
7/16-20	35	47.6	55	74.8	80	108.8
1/2-13	50	68.0	75	102.0	110	149.6
1/2-20	55	74.8	90	122.4	120	163.2
9/16-12	65	88.4	110	149.6	150	204.0
9/16-18	75	102.0	120	163.2	170	231.2
5/8-11	90	122.4	150	204.0	220	299.2
5/8-18	100	136	180	244.8	240	326.4
3/4-10	160	217.6	260	353.6	386	525.0
3/4-16	180	244.8	300	408.0	420	571.2
7/8-9	140	190.4	400	544.0	600	816.0
7/8-14	155	210.8	440	598.4	660	897.6
1-8	220	299.2	580	788.8	900	1,244.0
1-12	240	326.4	640	870.4	1,000	1,360.0

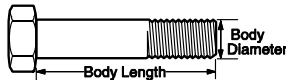
The guides and ruler furnished below are designed to help you select the appropriate hardware.



Nut, M8

Thread Diameter (mm)
Inside Diameter (in) Threads per inch

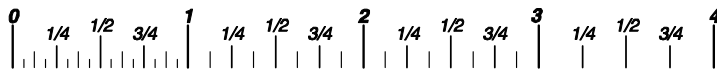
Nut, 1/2-16



Screw, M8-1.25 x 25

Thread Diameter (mm) Distance between threads (mm) Body Length (mm)
Body Diameter Threads per inch Body Length (in)

Screw, 1/2-16 x 2



Standard Hardware Sizing

When a washer or nut is identified as 1/2" (M8), this is the *Nominal size*, meaning the *inside diameter* is 1/2 inch (8mm metric thread diameter); if a second number is present it represents the *threads per inch* (distance between threads).

When bolt or capscrew is identified as 1/2 - 16 x 2" (M8 - 1.25 x 50), this means the *Nominal size*, or body diameter is 1/2 inch (8mm metric thread diameter), the second number, 16, represents the *threads per inch*, (1.25 thread diameter). The final number is the body length of the bolt or screw, 2 inches (50mm).

NOTES

- These torque values are to be used for all hardware excluding: locknuts, self-tapping screws, thread forming screws, sheet metal screws and socket head setscrews.
- Recommended seating torque values for locknuts:
 - for prevailing torque locknuts - use 65% of grade 5 torques.
 - for flange whizlock nuts and screws - use 135% of grade 5 torques.
- Unless otherwise noted on assembly drawings, all torque values must meet this specification.

Common Hardware Types

Hex Head Capscrew



Washer

Lockwasher

Carriage Bolt



Hex Nut

Wrench & Fastener Size Guide

1/4" Bolt or Nut Wrench—7/16"	5/16" Bolt or Nut Wrench—1/2"	3/8" Bolt or Nut Wrench—9/16"	7/16" Bolt or Nut Wrench (Bolt)—5/8" Wrench (Nut)—11/16"	1/2" Bolt or Nut Wrench—3/4"
M6 Bolt or Nut Wrench—10mm	M8 Bolt or Nut Wrench—13mm	M10 Bolt or Nut Wrench—17mm	M12 Bolt or Nut Wrench—19mm	M14 Bolt or Nut Wrench—22mm

Parts Manual for

SNAPPER®

22" VARIABLE SPEED HIGH WHEEL WALK BEHIND MOWERS

IT IS THE POLICY OF BRIGGS & STRATTON CORP TO IMPROVE ITS PRODUCTS WHENEVER IT IS POSSIBLE AND PRACTICAL TO DO SO. WE RESERVE THE RIGHT TO MAKE CHANGES OR ADD IMPROVEMENTS AT ANY TIME WITHOUT INCURRING ANY OBLIGATION TO MAKE SUCH CHANGES ON PRODUCTS

Briggs & Stratton Yard Power Products Group

535 Macon Road
McDonough, GA, 30253 U.S.A.
800-935-2967

www.snapper.com

Copyright © 2012 Briggs & Stratton Corporation
Milwaukee, WI USA. All Rights Reserved

Manual No. 7105681

Revision: - 4/9/2012