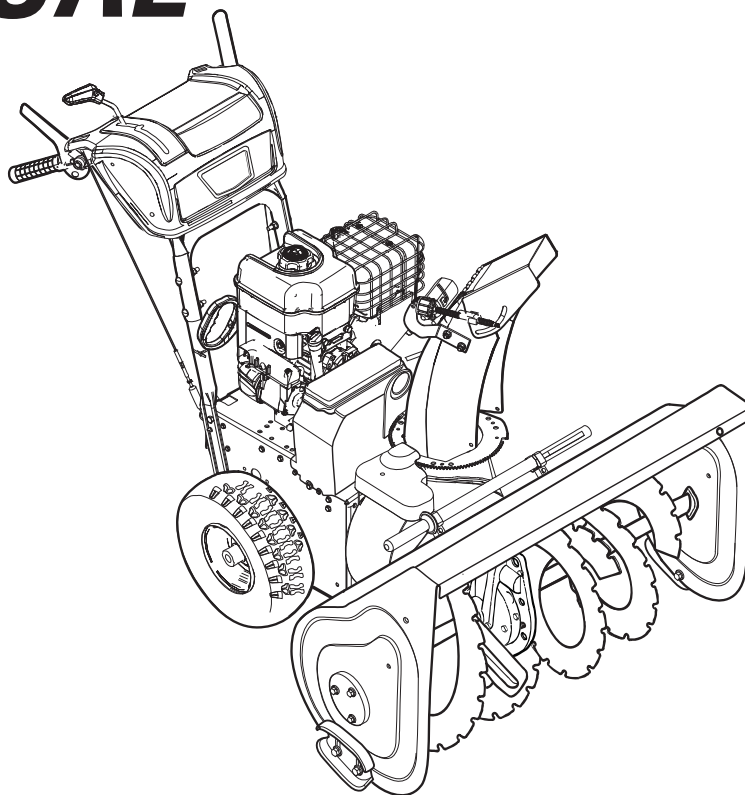




# ***PARTS MANUAL***



## **Models**

<b>Mfg. No.</b>	<b>Description</b>
1696201-00	MH761650SE, Murray 16.5TP 30" Dual Stage Snowthrower (CE) (2012)

**Manual Part No.** 1755613

Revision -

Rev. Date: 7/13/2012

Not for  
Reproduction

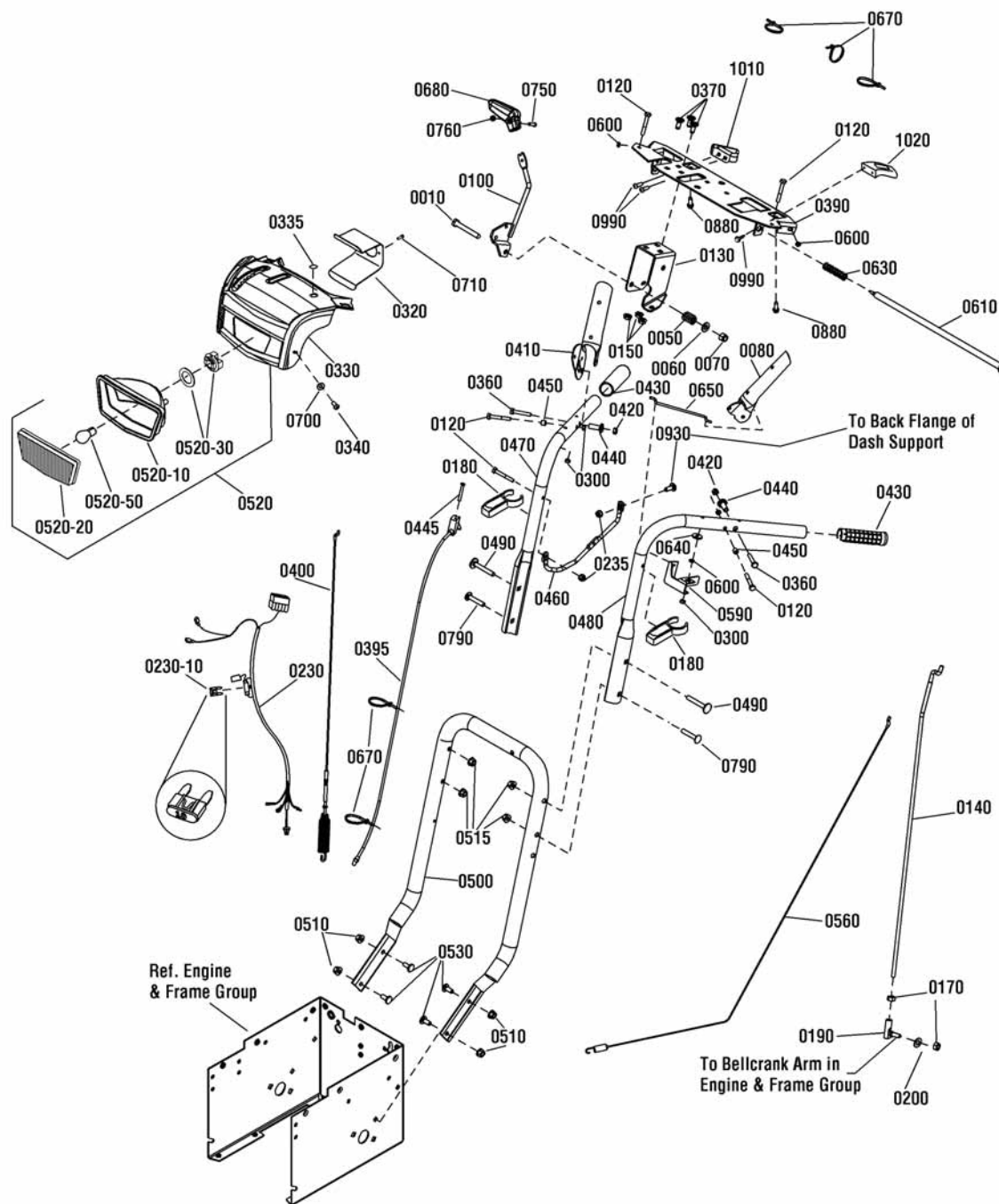
<b>PRODUCT COMPONENTS</b>	<b>PAGES</b>
Handles & Controls Group .....	4
Engine & Frame Group .....	8
Auger Housing Group .....	10
Auger Drive Group .....	12
Traction Drive Group .....	14
Wheels and Tires Group .....	16
Decals .....	18
Gear Case Assembly .....	20
Discharge Chute Group .....	22
<b>Torque Specification Chart .....</b>	<b>Inside Back Cover</b>

Not for  
Reproduction

## Handles & Controls Group

NOTE: Unless noted otherwise, use the standard hardware torque specification chart.

2990543



The above parts group applies to the following Mfg. Nos.:  
1696201-00 - MH761650SE

**Handles & Controls Group**

REF NO	PART NO.	QTY.	DESCRIPTION
0010	1923701SM	2	CAPSCREW, Hex Head, 3/8-16 x 2, G5
0050	50786MA	1	SPRING, 3/4"
0060	1918266SM	1	WASHER, 3/8
0070	1919439SM	1	NUT, Hex Lock, ESNA Light, 3/8-16
0080	1739782AYP	1	LEVER, Clutch, LH
0100	1736836YP	1	LEVER, Speed
0120	1921962SM	5	CAPSCREW, Hex Head, 1/4-20 x 1-3/4, G5
0130	1737684YP	1	BRACKET, Controls
0140	1737331YP	1	ROD, Speed Control
0150	1931277SM	3	NUT, Hex Flange, Whiz Lock, 5/16-18
0170	2820263SM	2	NUT, Hex, 5/16-24
0180	1739510YP	2	BRACKET, Mounting
0190	1739290YP	1	BALLJOINT
0200	1917356SM	1	LOCKWASHER, Spring, 5/16
0230	1750773YP	1	HARNESS
0230-10	----	1	* FUSE, Mini, 10 Amp (Included with Ref. No. 0230)
0235	5025391SM	2	NUT, Hex Flange, Nylock, 1/4-20
0300	1920397SM	4	NUT, Hex Lock, ESNA Light, 1/4-20
0320	1736305AYP	1	BRACKET, Light Mount
0330	1753097YP	1	DASH
0335	1752273YP	1	PLUG
0340	1960001SM	3	SCREW, Hex Washer Head, Plastite, 10-14 x 5/8
0360	1753529YP	3	BOLT, Shoulder
0370	340720MA	3	BOLT, Carriage, 5/16-18 x 3/4
0390	1739500AYP	1	SUPPORT, Dash
0395	1737510YP	1	CABLE, Steering Control
0400	1737544YP	1	CABLE, Auger Drive
0410	1739783AYP	1	LEVER, Clutch, RH
0420	1933896SM	2	NUT, Hex Lock, Nylon Insert, 10-24
0430	1726317SM	2	HAND GRIP
0440	1736542YP	2	SPACER, Stepped
0445	7073145YP	1	BOLT, Oval Head, 10-24 x 1-1/2
0450	1678392SM	2	SPACER, 1/4 ID x 3/8 OD x 5/16"
0460	1737552YP	1	BRACE
0470	1737531AYP	1	HANDLE, Upper, RH
0480	1737532AYP	1	HANDLE, Upper, LH
0490	1960273SM	2	BOLT, Carriage, Short Neck, 5/16-18 x 2-1/4, G5
0500	1737274AYP	1	HANDLE, Lower
0510	1739305YP	4	NUT, Hex Flange, ESNA, 5/16-18
0515	1960684SM	4	NUT, Hex KEPS, 5/16-18
0520	1736208YP	1	HEADLIGHT ASSEMBLY
0520-10	----	1	DEFLECTOR (Included in Ref. No. 0520)
0520-20	----	1	LENSE (Included in Ref. No. 0520)

**Footnotes**

Note\* See your local hardware store for replacement bulbs & fuses.

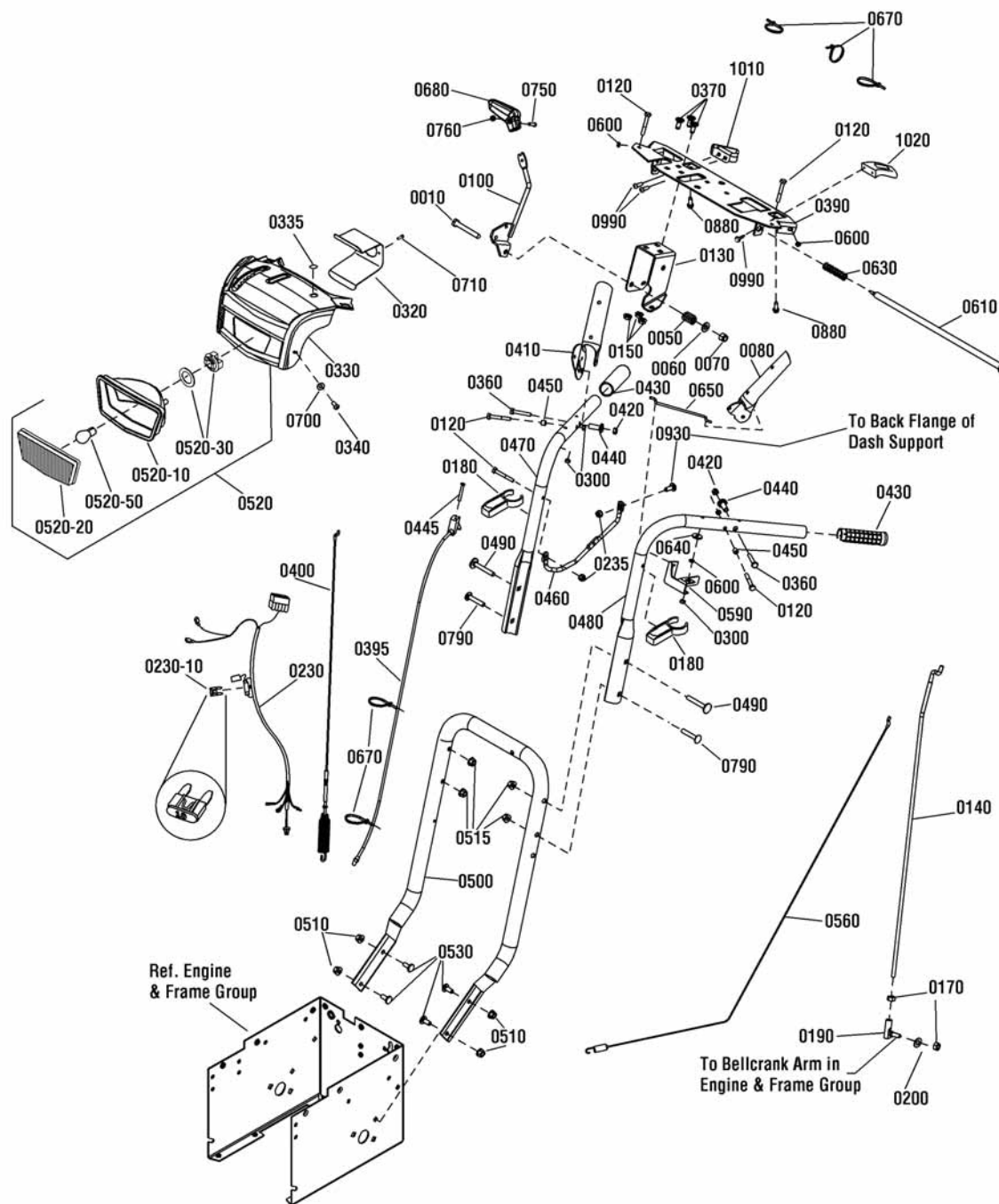
**The above parts group applies to the following Mfg. Nos.:**

1696201-00 - MH761650SE

## Handles & Controls Group

NOTE: Unless noted otherwise,  
use the standard hardware torque  
specification chart.

2990543



The above parts group applies to the following Mfg. Nos.:  
1696201-00 - MH761650SE

**Handles & Controls Group**

REF NO	PART NO.	QTY.	DESCRIPTION
0520-30	1736180YP	1	SOCKET & GASKET ASSEMBLY, Headlight (Included in Ref. No. 0520)
0520-50	-----	1	* BULB, Light, 12V 15W, 1156 (Included in Ref. No. 0520)
0530	1737687YP	4	BOLT, Carriage, 5/16-18 x 3/4
0560	1737511YP	1	CABLE, Forward Drive
0590	1733505ASM	1	BRACKET, Pivot, Free Hand
0600	1733095SM	1	SPACER, 1/4 ID x 3/8 OD x 1/8"
0610	1736363YP	1	ROD & SPRING ASSEMBLY
0630	2108360SM	1	SPRING, Compression, 2-1/4"
0640	1960353SM	1	WASHER, 1/4
0650	1736360YP	1	ROD, Hold Down
0670	1701011SM	5	TIE, Self Lock
0680	1733192SM	1	KNOB, Speed
0700	1921319SM	2	WASHER, 1/4
0710	316042MA	2	SCREW, Hex Washer Head, #10 Hi-Lo x 5/8
0750	1960589SM	1	SCREW, Phillips, #10-24 x 3/4
0760	1933896SM	1	NUT, Hex Lock, Nylon Insert, 10-24
0790	1931338SM	2	BOLT, Carriage, Short Neck, 5/16-18 x 1-3/4, G5
0880	7091081SM	2	SCREW, Hex Washer, 1/4-15 x 3/4
0930	7091530SM	1	BOLT, Carriage, Short Neck, 1/4-20 x 3/4, G5
0990	1960556SM	4	SCREW, Pan Head Torx, Tapitite, 1/4-20 x 3/4
1010	1739483AYP	1	POD, Chute Rotation, RH
1020	1739484AYP	1	POD, Deflector Control, LH

Not for  
Reproduction

**Footnotes**

Note\* See your local hardware store for replacement bulbs & fuses.

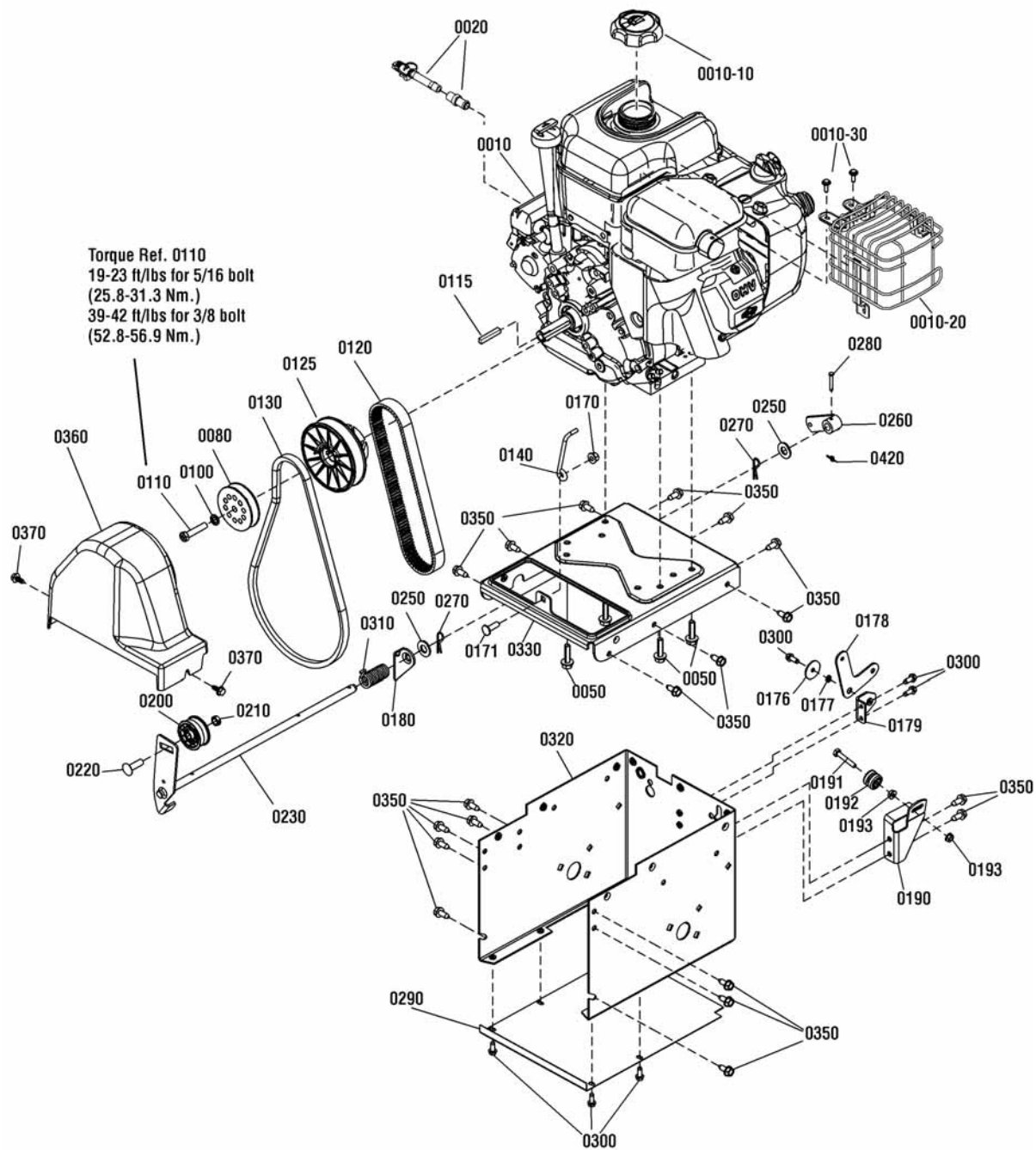
**The above parts group applies to the following Mfg. Nos.:**

1696201-00 - MH761650SE

## Engine & Frame Group

NOTE: Unless noted otherwise,  
use the standard hardware torque  
specification chart.

2990542



The above parts group applies to the following Mfg. Nos.:  
1696201-00 - MH761650SE



**Engine & Frame Group**

REF NO	PART NO.	QTY.	DESCRIPTION
0010	21M314-0129-H1	1	* ENGINE, 14.5TP Briggs & Stratton (Engine Model: 21M314-0129-H1)
0010-10	795027	1	CAP, Fuel
0010-20	796384	1	GUARD, Muffler (Includes Ref. No. 0010-30)
0010-30	699234	4	SCREW, Muffler Guard
0020	798980	1	OIL DRAIN
0050	75246GS	4	CAPSCREW, Hex Head, Trilobular, 3/8-16 x 1-1/4
0080	1737509YP	1	PULLEY ASSEMBLY
0100	1916965SM	1	LOCKWASHER, Spring, 3/8
0110	2860768YP	1	CAPSCREW, Hex Head, 3/8-24 x 1-3/4, G8
0115	2157427SM	1	KEY, Parallel
0120	1733324SM		V-BELT, Multi Speed
0125	1733968YP	1	PULLEY ASSEMBLY
0130	585416MA	1	BELT, Auger, V4L 38.10 MF 05-10B
0140	1737377YP	1	STOP, Belt
0170	1960684SM	1	NUT, Hex KEPS, Conical Washer, 5/16-18
0171	1931335SM	1	BOLT, Carriage, 5/16-18 x 1 G5
0176	1960151SM	1	WASHER, 1/4 x 1-1/4 x 1/16
0177	1733095SM	1	SPACER, Powdered Metal
0178	1737329YP	1	BELLCRANK
0179	1737328AYP	1	BRACKET, Lower
0180	1737297YP	1	BRACKET, Support, Auger Idler
0190	1737347AYP	1	BRACKET, Guide Wheel
0191	1922837SM	1	CAPSCREW, Hex Head, 1/4-20 x 1-1/2 G5
0192	579860MA	1	SPOOL CABLE, Auger Control
0193	192432GS	2	NUT, Lock, Serrated, 1/4-20
0200	1502120MA	1	IDLER, Plastic, Ball Bearing
0210	1960251SM	1	NUT, Hex Jam, 3/8-16
0220	585781MA	1	BOLT, Carriage, 3/8-16 x 1-1/4
0230	1737296YP	1	IDLER, Auger
0250	1960027SM	2	WASHER, 1/2" Flat
0260	1733451SM	1	BRACKET & HUB ASSEMBLY, Spring
0270	0031X6MA	2	PIN, Hair
0280	1736381YP	1	PIN, Clevis
0290	1737221AYP	1	PANEL, Bottom
0300	1927429SM	7	SCREW, Hex Washer Head Taptite, 1/4-20 x 5/8
0310	1737350YP	1	SPRING, Torsional
0320	1737106BIYP	1	FRAME BOX
0330	1754136BIYP	1	PLATE, Engine Mount
0350	1664847SM	19	SCREW, Hex Washer Head Taptite, 5/16-18 x 3/4
0360	1750551YP	1	COVER, Belt
0370	1751355YP	2	SCREW, Hex Washer Head, SEMS, Taptite, 1/4-20 x 3/4
0420	7023590SM	1	COTTER PIN, 1/4" Self Locking

**Footnotes**

Note\* To verify your specific engine model, please reference the ID Tag located on your engine. See your local Briggs & Stratton distributor for parts and service.

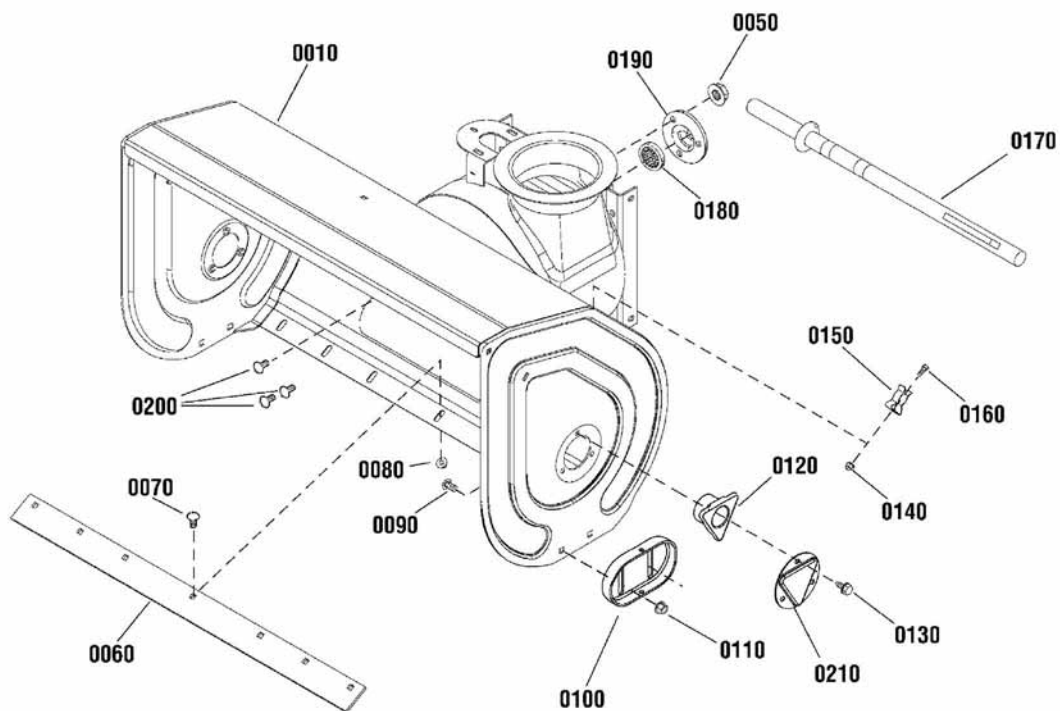
**The above parts group applies to the following Mfg. Nos.:**

1696201-00 - MH761650SE

## Auger Housing Group

NOTE: Unless noted otherwise,  
use the standard hardware torque  
specification chart.

2990540



The above parts group applies to the following Mfg. Nos.:

1696201-00 - MH761650SE

**Auger Housing Group**

REF NO	PART NO.	QTY.	DESCRIPTION
0010	1687604YP	1	AUGER HOUSING, 30
0050	1739305YP	3	NUT, Hex Flange, ESNA, 5/16-18
0060	1732385BMYP	1	BLADE, Scraper, 30
0070	1960699SM	7	BOLT, Carriage, Short Neck, 5/16-18 x 5/8, G5
0080	1935048SM	7	NUT, Hex Flange, Two Way Lock, 5/16-18
0090	7091790YP	4	BOLT, Carriage, 3/8-16 x 1-1/4
0100	1750222YP	2	SKID SHOE
0110	1960687SM	4	NUT, Hex Flange, ESNA, 3/8-16
0120	1733103SM	2	BEARING, Flange, 1.3/8 ID x 3-3/4 OD
0130	1931202SM	6	SCREW, Hex Washer Head, Taptite, 5/16-18 x 1-1/4
0140	15X146MA	2	NUT, Nylock, 10 x 24
0150	1736620YP	2	CLAMP
0160	1960569SM	2	SCREW, Truss Head Torx, #10-24 x 3/8
0170	1736094YP	1	BRUSH, Cleanout
0180	2108202SM	1	BEARING, Ball, 3/4 ID x 1-3/4 OD
0190	1665982SM	1	RETAINER, Bearing
0200	1931333SM	3	BOLT, Carriage, Short Neck, 5/16-18 x 3/4, G5
0210	1734932BMYP	2	COVER, Bushing

Not for  
Reproduction

**Footnotes**


---

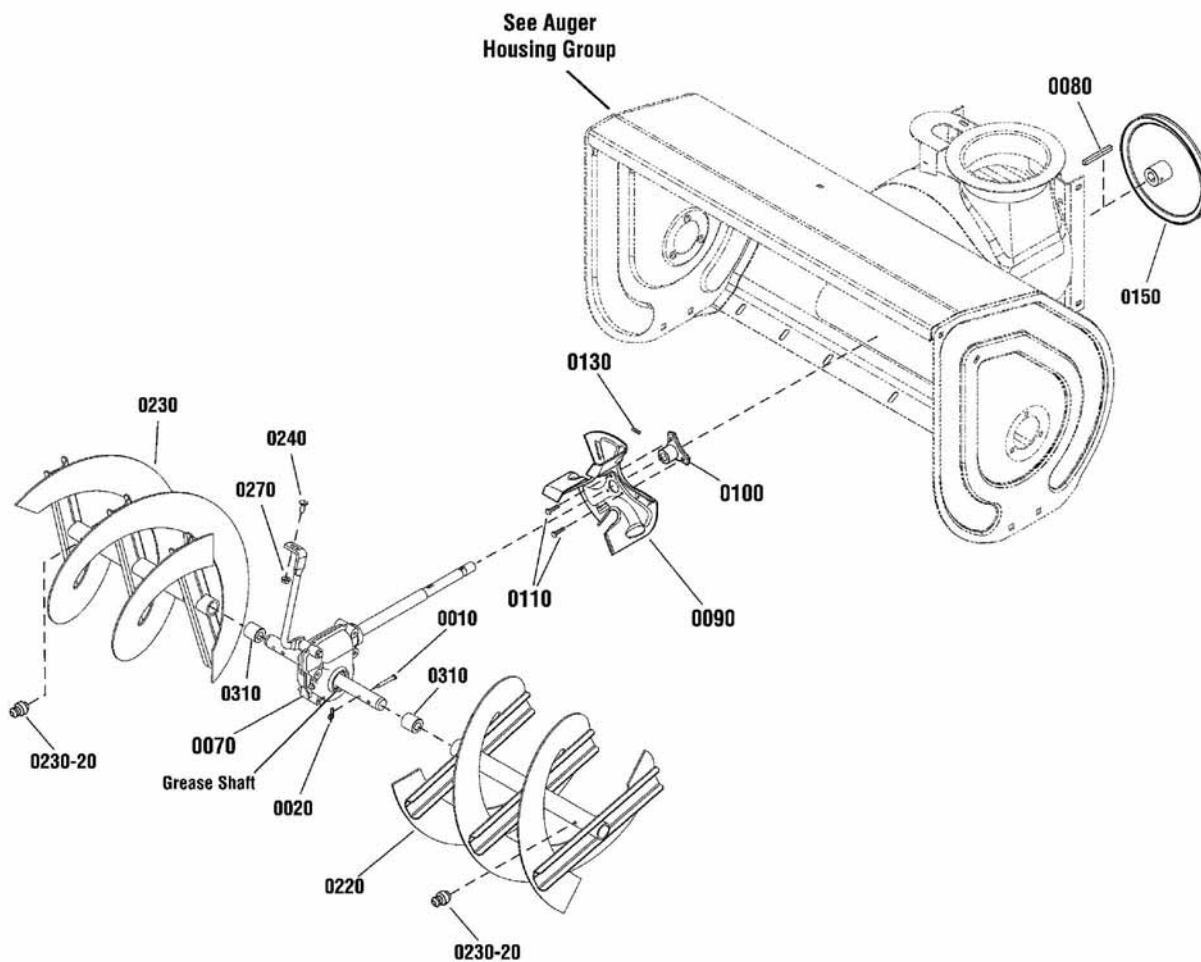
**The above parts group applies to the following Mfg. Nos.:**

1696201-00 - MH761650SE

## Auger Drive Group

NOTE: Unless noted otherwise, use the standard hardware torque specification chart.

2990546



The above parts group applies to the following Mfg. Nos.:

1696201-00 - MH761650SE

**Auger Drive Group**

REF NO	PART NO.	QTY.	DESCRIPTION
0010	1739295YP	2	PIN, Shear, 1-3/4
0020	1739292YP	2	PIN, Cotter, Self Locking
0070	1754690YP	1	GEAR BOX ASSEMBLY
0080	2001022MA	1	KEY, Square, 3/16 x 3/4
0090	1739094AYP	1	IMPELLER
0100	1739073YP	1	HUB, Impeller
0110	1924856SM	3	SCREW, Hex Washer Head, Taptite, 5/16-18 x 1/2
0130	7090848SM	3	SCREW, Set Square Head, 5/16-18 x 1/2
0150	1752220YP	1	PULLEY, Auger
0220	1737079BJYP	1	AUGER ASSEMBLY, LH (Includes Ref. No. 0230-20)
0230	1737078BJYP	1	AUGER ASSEMBLY, RH (Includes Ref. No. 0230-20)
0230-20	2821133SM	2	FITTING, Lube
0240	1931333SM	1	BOLT, Carriage, 5/16-18 x 3/4, G5
0270	1931277SM	1	NUT, Hex Flange Whiz Lock, 5/16-18
0310	1733406SM	2	SPACER, 1" Lg
--	1739821YP	1	KIT, Shear Pin (Includes Ref. Nos. 0110 & 0120)

Not for  
Reproduction

**Footnotes**

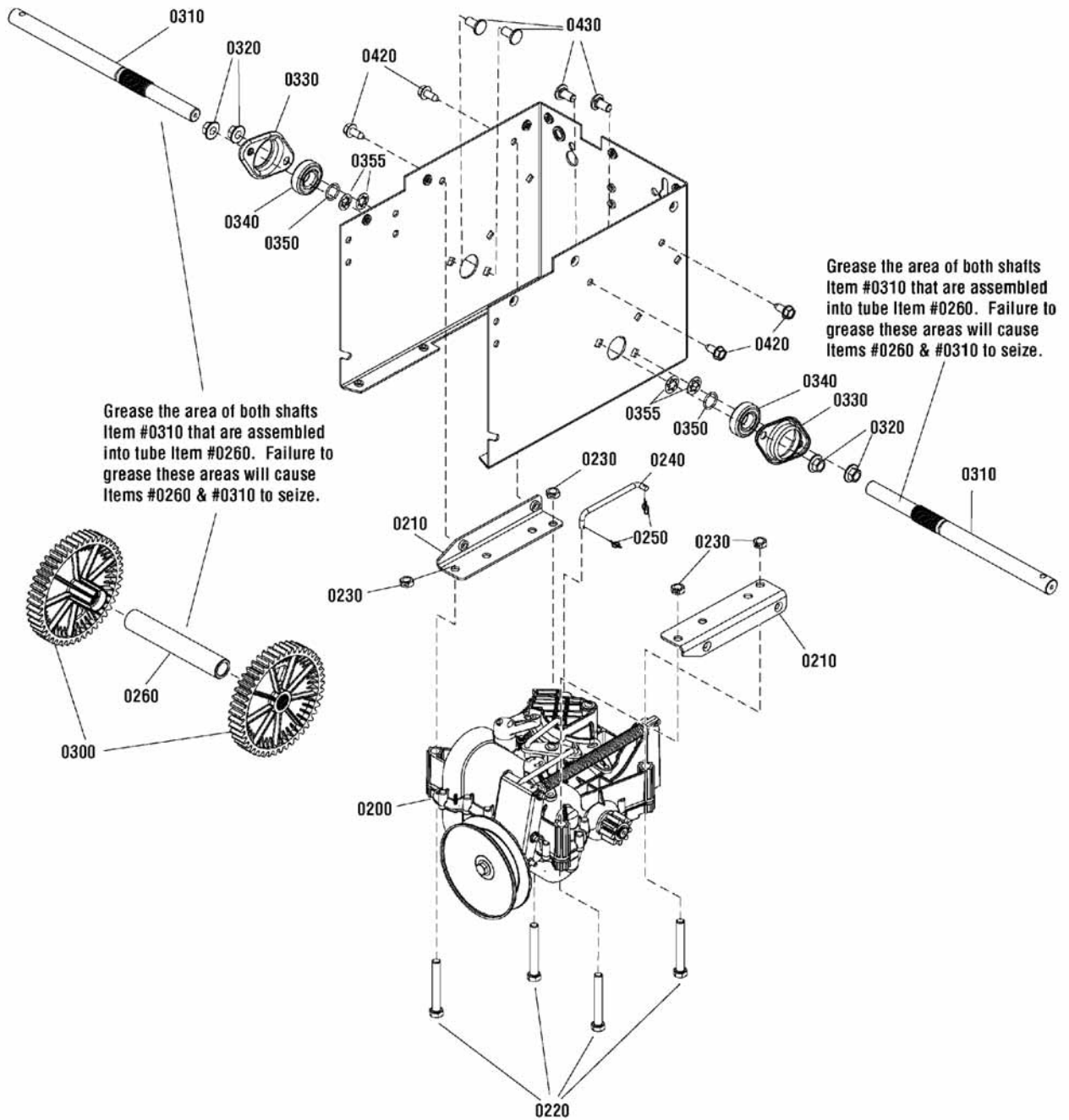
**The above parts group applies to the following Mfg. Nos.:**

1696201-00 - MH761650SE

## Traction Drive Group

2987638

**NOTE:** Unless noted otherwise, use the standard hardware torque specification chart.



**The above parts group applies to the following Mfg. Nos.:**

1696201-00 - MH761650SE

**Traction Drive Group**

REF NO	PART NO.	QTY.	DESCRIPTION
0200	1733972YP	1	TRANSMISSION, General Transmission H2
0210	1737267AYP	2	BRACKET
0220	7091557SM	4	CAPSCREW, Hex Head, 3/8C x 2-3/4 GR5
0230	1960251SM	4	NUT, Hex Jam, 3/8-16
0240	1737330YP	1	ROD, Speed Select
0250	7023590SM	2	COTTER PIN, 1/4" Self Locking
0260	1737310YP	1	TUBE, Support
0300	1737311YP	2	GEAR, Drive
0310	1737309YP	2	AXLE
0320	1928352SM	4	NUT, Hex Flange, Whiz Lock Large, 3/8-16
0330	1736396YP	2	RETAINER, Bearing
0340	53263MA	2	BEARING, Ball
0350	1737742YP	2	RING, Retaining
0355	7013847YP	4	RETAINER, Bolt 3/8"
0420	1664847SM	4	SCREW, Hex Washer Head Taptite, 5/16-18 X 3/4
0430	1737686YP	4	BOLT, Carriage, FH GR 5, 3/8-16 x 3/4

Not for  
Reproduction

**Footnotes**

Note\* See Transmission Assembly Group for detailed service parts.

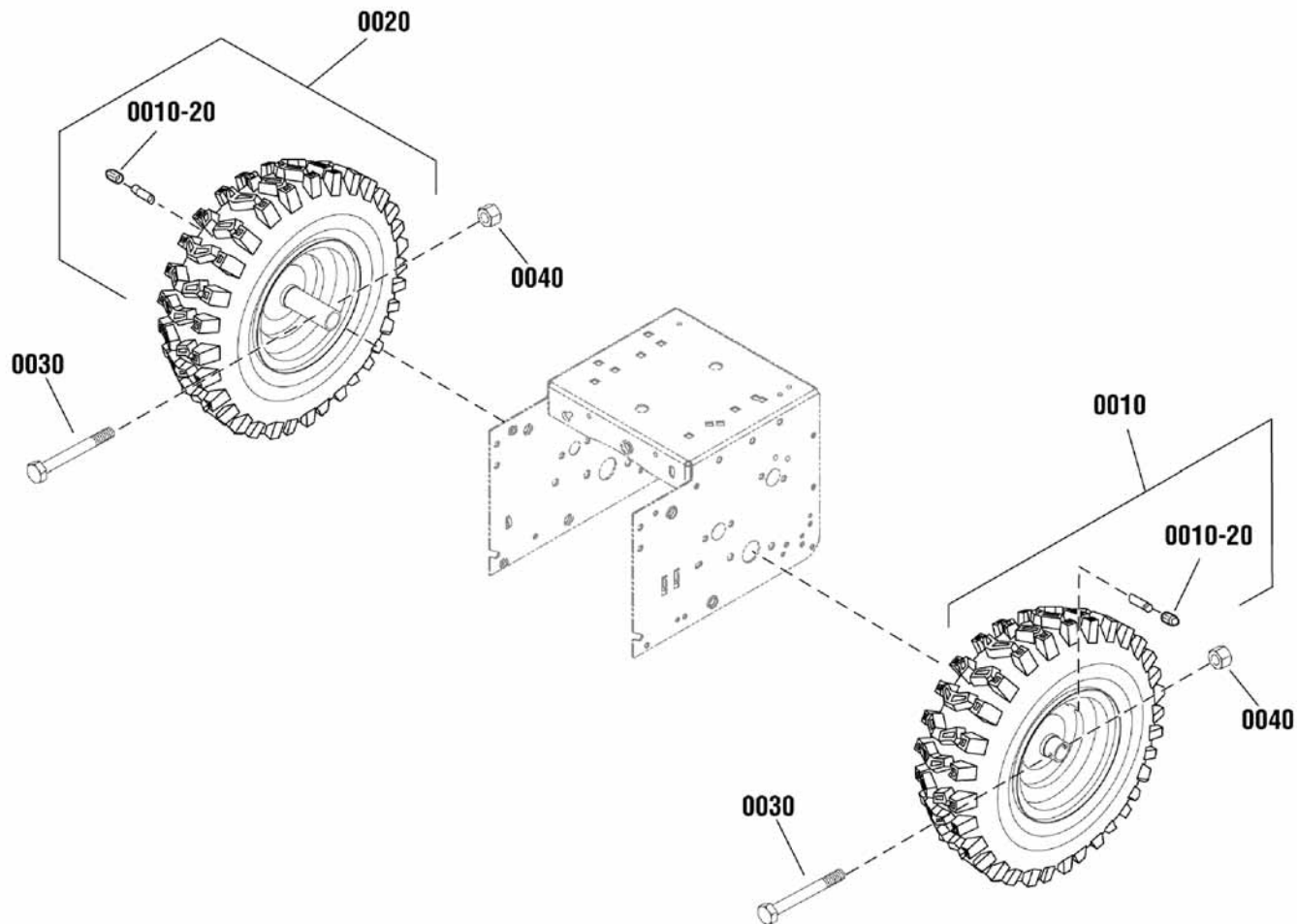
**The above parts group applies to the following Mfg. Nos.:**

1696201-00 - MH761650SE

## Wheels and Tires Group

NOTE: Unless noted otherwise,  
use the standard hardware torque  
specification chart.

2990431



The above parts group applies to the following Mfg. Nos.:

1696201-00 - MH761650SE



**Wheels and Tires Group**

REF NO	PART NO.	QTY.	DESCRIPTION
0010	1754484YP	1	WHEEL & TIRE ASSEMBLY, L.H. (Includes Ref. No. 0010-20)
0020	1754485YP	1	WHEEL & TIRE ASSEMBLY, R.H. (Includes Ref. No. 0010-20)
0010-20	2172353SM	2	VALVE STEM & CAP
0030	577015MA	2	BOLT, Hex, 1/4-20 x 1-3/4
0040	15X145MA	2	NUT, Hex Nylock, 1/4-20

Not for  
Reproduction

**Footnotes**


---

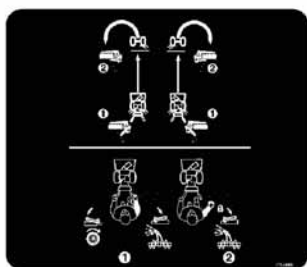
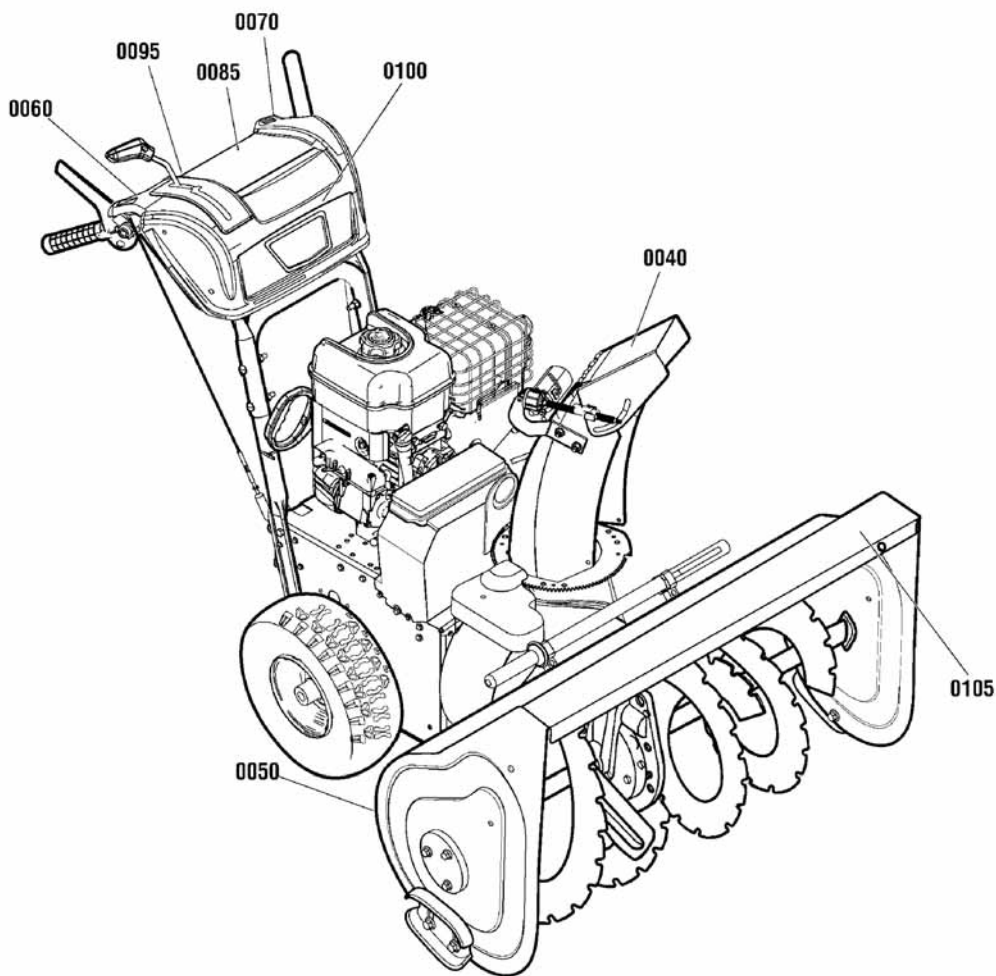
**The above parts group applies to the following Mfg. Nos.:**

1696201-00 - MH761650SE

## Decals

NOTE: Unless noted otherwise, use the standard hardware torque specification chart.

2990544



The above parts group applies to the following Mfg. Nos.:  
1696201-00 - MH761650SE

**Decals**

REF NO	PART NO.	QTY.	DESCRIPTION
0040	1727207SM	1	DECAL, Chute Warning
0050	1737867YP	1	DECAL, Danger Auger Icons
0060	1737869YP	1	DECAL, Auger Control Symbols
0070	1737870YP	1	DECAL, Traction Control Symbols
0085	1755489YP	1	DECAL, Dash Operation
0095	1751582YP	1	DECAL, Gear Shift
0100	1738309YP	1	DECAL, Logo, Dash
0105	1754780YP	1	DECAL, Auger, Logo

Not for  
Reproduction

**Footnotes**


---

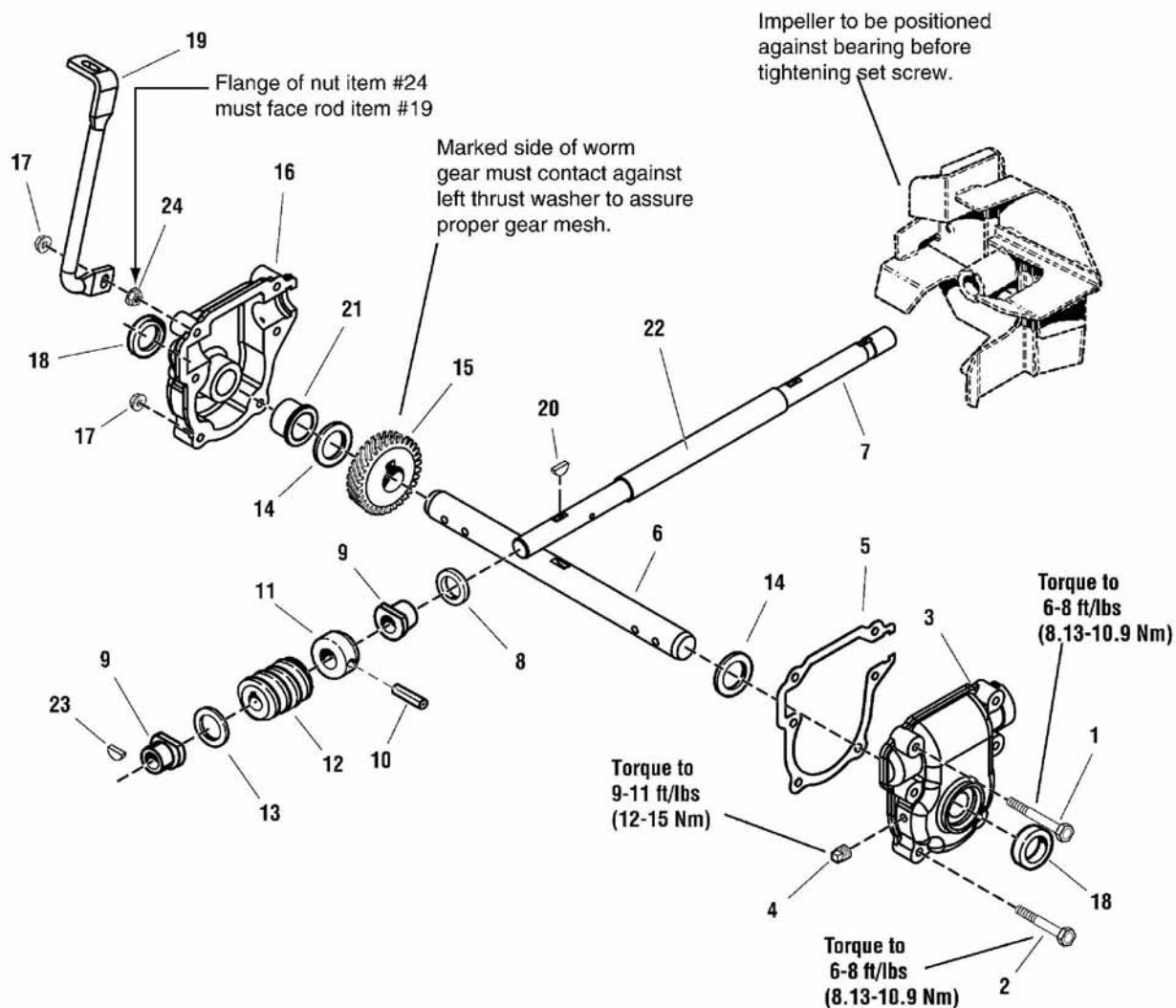
**The above parts group applies to the following Mfg. Nos.:**

1696201-00 - MH761650SE

## Gear Case Assembly

NOTE: Unless noted otherwise, use the standard hardware torque specification chart.

1732303



The above parts group applies to the following Mfg. Nos.:

1696201-00 - MH761650SE

**Gear Case Assembly**

REF NO	PART NO.	QTY.	DESCRIPTION
1	1926105SM	1	CAPSCREW, 1/4-20 x 2-3/4
2	1960346SM	5	CAPSCREW, 1/4-20 x 2-1/4
3	1734218SM	1	GEAR CASE, Left
4	1668971SM	1	TAPERED PIPE PLUG
5	1612124SM	1	GASKET
6	1732440SM	1	SHAFT, Auger Cutoff
7	1754687YP	1	SHAFT, Worm Cutoff
8	1612093SM	1	SEAL, Oil
9	1612149SM	2	FLANGE BUSHING
10	2836098SM	1	PIN, Drive Lock
11	1612127SM	1	THRUST COLLAR
12	1612142SM	1	ROLLED WORM CASE
13	2168111SM	1	WASHER, Thrust
14	2118315SM	2	WASHER, Thrust
15	1612141SM	1	GEAR, Worm
16	1734219SM	1	GEAR CASE, Right
17	1930642SM	6	NUT, Top Lock Flange, 1/4-20
18	2118118SM	2	SEAL
19	1732152SM	1	BRACKET, Wireform
20	2818312SM	1	KEY, Woodruff
21	1732991SM	2	BUSHING
22	1612111SM	1	TUBE
23	2830246SM	1	KEY, Woodruff
24	1960294SM	1	NUT, Flange, 1/4-20

Not for  
Reproduction

**Footnotes**

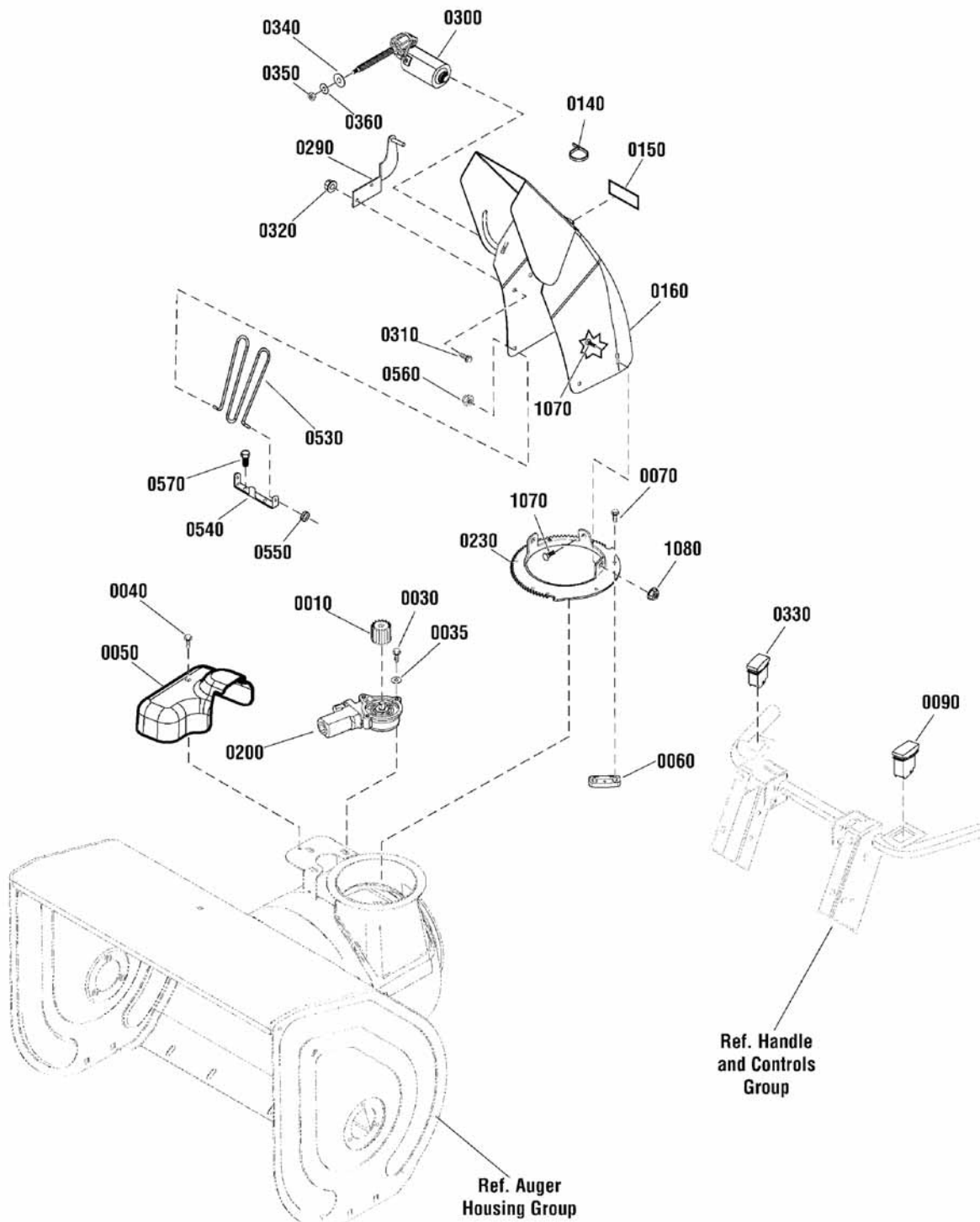
**The above parts group applies to the following Mfg. Nos.:**

1696201-00 - MH761650SE

## Discharge Chute Group

NOTE: Unless noted otherwise, use the standard hardware torque specification chart.

2990541



The above parts group applies to the following Mfg. Nos.:

1696201-00 - MH761650SE

**Discharge Chute Group**

REF NO	PART NO.	QTY.	DESCRIPTION
0010	1728967SM	1	PINION
0030	1739621YP	3	SCREW, Torx Button Head, M5 x .8 x 14
0035	7091552SM	3	WASHER, Flat, 7/32
0040	1925592SM	1	SCREW, Hex Washer Head, Taptite, 1/4-20 x 3/4
0050	1752877YP	1	COVER, Electric Chute Rotation
0060	7011938SM	3	RETAINER, Spout
0070	1960001SM	6	SCREW, Hex Washer Head, Plastite, 10-14 x 5/8
0090	1737378YP	1	SWITCH, Chute Rotation
0140	1701011SM	1	TIE, Self Lock
0150	1733601SM	2	DECAL, Hinge
0160	1752841BIYP	1	CHUTE, Tall
0200	1739309YP	1	MOTOR, Chute Rotation
0230	1737962BMYP	1	GEAR, Chute
0290	1738267BMYP	1	BRACKET, Weld Stud
0300	1737941YP	1	MOTOR, Chute Deflector
0310	1960715SM	2	SCREW, Truss Head, Torx Drive, 1/4-20 x 3/4
0320	1960694SM	2	NUT, Hex Flange, ESNA, 1/4-20
0330	1737379YP	1	SWITCH, Chute Deflector
0340	1738244YP	1	WASHER, Rubber
0350	1738245YP	1	NUT, 1/4-20, LH
0360	5025154SM	1	WASHER, 1/4
0530	1733475SM	1	GUARD, Chute
0540	1752883YP	1	BRACKET, Chute Guard
0550	1738174YP	2	GROMMET
0560	1960140SM	2	NUT, Push, 3/16
0570	1925003SM	2	SCREW, Hex Washer Head, Taptite, 1/4-20 x 1/2
1070	1931317SM	3	BOLT, Carriage, Short Neck, 1/4-20 x 3/4, G5
1080	1960685SM	3	NUT, Hex KEPS, 1/4-20

**Footnotes**

**The above parts group applies to the following Mfg. Nos.:**

1696201-00 - MH761650SE

Not for  
Reproduction



Not for  
Reproduction

Not for  
Reproduction

# Hardware Identification & Torque Specifications

Torque Specification Chart								
FOR STANDARD METRIC MACHINE HARDWARE (Tolerance ± 20%)								
Property Class	5.6 Class 5.6		8.8 Class 8.8		10.9 Class 10.9		12.9 Class 12.9	
	in/lbs ft/lbs	Nm.	in/lbs ft/lbs	Nm.	in/lbs ft/lbs	Nm.	in/lbs ft/lbs	Nm.
M3	5.88	.56	13.44	1.28	19.2	1.80	22.92	2.15
M4	13.44	1.28	30.72	2.90	43.44	4.10	52.56	4.95
M5	26.4	2.50	60.96	5.75	5.97	8.10	7.15	9.7
M6	44.64	4.3	7.3	9.9	10.3	14	12.1	16.5
M7	5.2	7.1	12.1	16.5	16.9	23	19.9	27
M8	7.7	10.5	17.7	24	25	34	29	40
M10	15	21	35	48	50	67	59	81
M12	26	36	61	83	86.2	117	103	140
M14	42	58	101	132	136	185	162	220
M16	64	88	147	200	210	285	250	340
M18	89	121	202	275	287	390	346	470
M20	126	171	290	390	405	550	486	660
M22	169	230	390	530	559	745	656	890
M24	217	295	497	375	708	960	840	1140
M27	320	435	733	995	1032	1400	1239	1680
M30	435	590	995	1350	1401	1900	1681	2280
M33	590	800	1349	1830	1902	2580	2278	3090
M36	759	1030	1740	2360	2441	3310	2935	3980
M39	988	1340	2249	3050	3163	4290	3798	5150

Torque Specification Chart						
FOR STANDARD MACHINE HARDWARE (Tolerance ± 20%)						
Hardware Grade	No Marks SAE Grade 2		SAE Grade 5		SAE Grade 8	
	in/lbs ft/lbs	Nm.	in/lbs ft/lbs	Nm.	in/lbs ft/lbs	Nm.
8-32	19	2.1	30	3.4	41	4.6
8-36	20	2.3	31	3.5	43	4.9
10-24	27	3.1	43	4.9	60	6.8
10-32	31	3.5	49	5.5	68	7.7
1/4-20	66	7.6	8	10.9	12	16.3
1/4-28	76	8.6	10	13.6	14	19.0
5/16-18	11	15.0	17	23.1	25	34.0
5/16-24	12	16.3	19	25.8	29	34.0
3/8-16	20	27.2	30	40.8	45	61.2
3/8-24	23	31.3	35	47.6	50	68.0
7/16-14	30	40.8	50	68.0	70	95.2
7/16-20	35	47.6	55	74.8	80	108.8
1/2-13	50	68.0	75	102.0	110	149.6
1/2-20	55	74.8	90	122.4	120	163.2
9/16-12	65	88.4	110	149.6	150	204.0
9/16-18	75	102.0	120	163.2	170	231.2
5/8-11	90	122.4	150	204.0	220	299.2
5/8-18	100	136	180	244.8	240	326.4
3/4-10	160	217.6	260	353.6	386	525.0
3/4-16	180	244.8	300	408.0	420	571.2
7/8-9	140	190.4	400	544.0	600	816.0
7/8-14	155	210.8	440	598.4	660	897.6
1-8	220	299.2	580	788.8	900	1,244.0
1-12	240	326.4	640	870.4	1,000	1,360.0

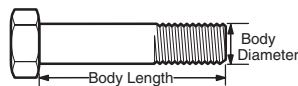
The guides and ruler furnished below are designed to help you select the appropriate hardware.



**Nut, M8**

Thread Diameter (mm)  
Inside Diameter (in)  
Threads per inch

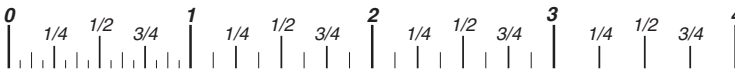
**Nut, 1/2-16**



**Screw, M8- 1.25 x 25**

Thread Diameter (mm)  
Body Diameter  
Distance between threads (mm)  
Threads per inch  
Body Length (mm)  
Body Length (in)

**Screw, 1/2- 16 x 2**



## Standard Hardware Sizing

When a washer or nut is identified as **1/2"** (M8), this is the *Nominal size*, meaning the *inside diameter* is 1/2 inch (8mm metric thread diameter); if a second number is present it represents the *threads per inch* (distance between threads).

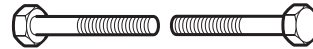
When bolt or capscrew is identified as **1/2 - 16 x 2"** (M8 - 1.25 x 50 ), this means the *Nominal size*, or body diameter is 1/2 inch (8mm metric thread diameter), the second number, 16, represents the *threads per inch*, (1.25 thread diameter). The final number is the body length of the bolt or screw, 2 inches (50mm).

## NOTES

- These torque values are to be used for all hardware excluding: locknuts, self-tapping screws, thread forming screws, sheet metal screws and socket head setscrews.
- Recommended seating torque values for locknuts:
  - for prevailing torque locknuts - use 65% of grade 5 torques.
  - for flange whizlock nuts and screws - use 135% of grade 5 torques.
- Unless otherwise noted on assembly drawings, all torque values must meet this specification.

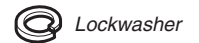
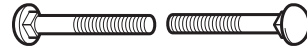
## Common Hardware Types

Hex Head Capscrew



Washer

Carriage Bolt



Lockwasher



Hex Nut

## Wrench & Fastener Size Guide

1/4" Bolt or Nut Wrench—7/16"	5/16" Bolt or Nut Wrench—1/2"	3/8" Bolt or Nut Wrench—9/16"	7/16" Bolt or Nut Wrench (Bolt)—5/8" Wrench (Nut)—11/16"	1/2" Bolt or Nut Wrench—3/4"
M6 Bolt or Nut Wrench—10mm	M8 Bolt or Nut Wrench—13mm	M10 Bolt or Nut Wrench—17mm	M12 Bolt or Nut Wrench—19mm	M14 Bolt or Nut Wrench—22mm

Not for  
Reproduction

**IT IS THE POLICY OF BRIGGS & STRATTON CORP. TO IMPROVE ITS PRODUCTS  
WHENEVER IT IS POSSIBLE AND PRACTICAL TO DO SO. WE RESERVE THE RIGHT TO  
MAKE CHANGES OR ADD IMPROVEMENTS AT ANY TIME WITHOUT INCURRING ANY  
OBLIGATION TO MAKE SUCH CHANGES ON PRODUCTS.**

**Briggs & Stratton Power Products Group**

---

12301 W. Wirth Street  
Wauwatosa, WI, 53222 USA

[www.murray.com](http://www.murray.com)

© Copyright 2012 by Briggs & Stratton Corporation  
Milwaukee, WI, USA. All rights reserved