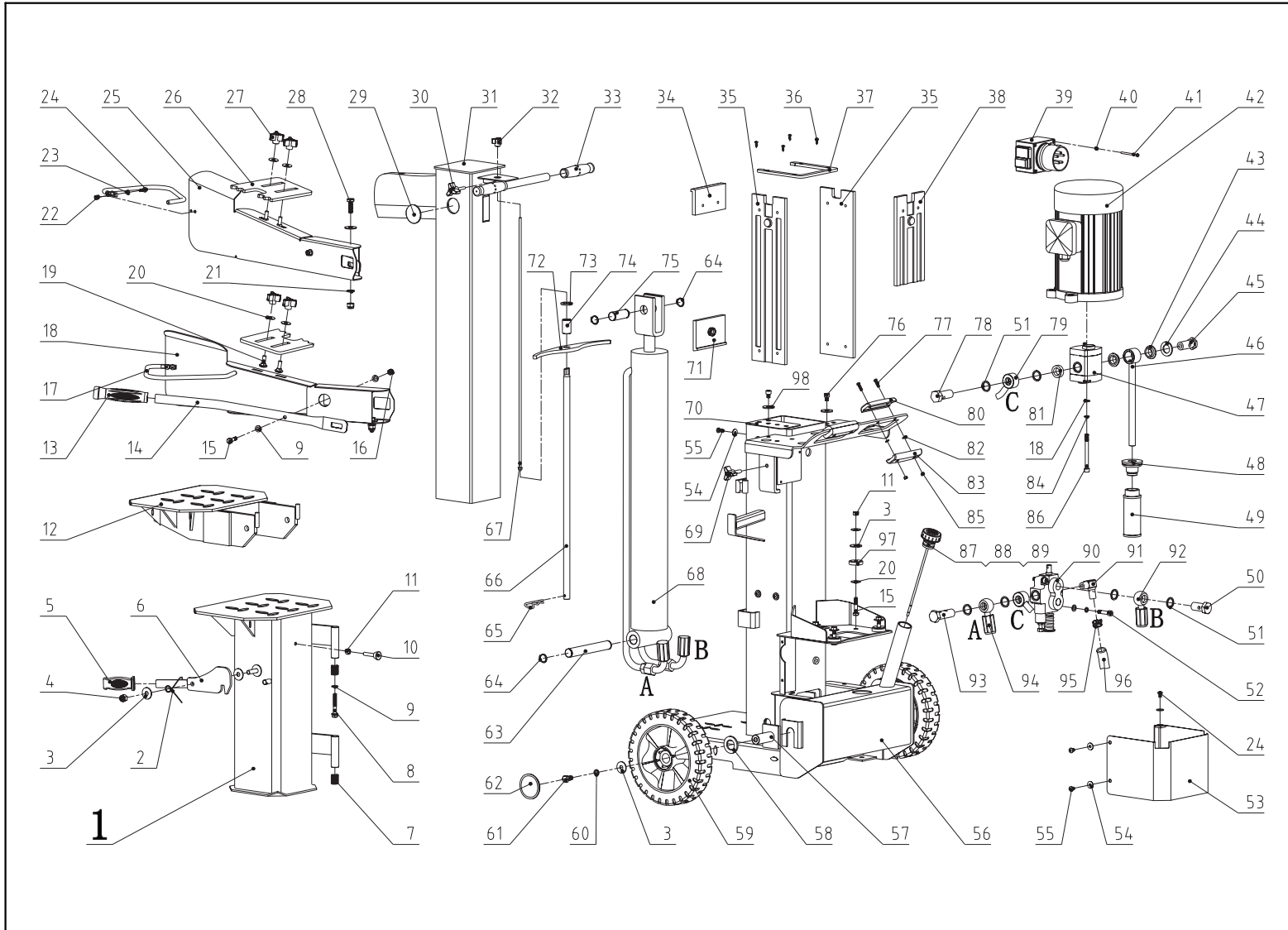


PARTS SCHEMATIC

65888UK00M100



C108爆炸图零件明细

65890 Part List

NO.	NAME	Qty
1	Revolving Log Support K8	1
2	Torsion spring A1	1
3	Big Washer 10	11
4	Locknut M10	3
5	Handle head	1
6	Lock Handle M1	1
7	Compression spring K	2
8	Bolt 8.8 M8x50	1
9	Washer 8	10
10	Alien bolt M8x40	1
11	Nut M8	5
12	Log Support KG	1
13	Handle Cover(black)	2
14	Handle KG	1
15	Bolt 8.8 M8x40	6
16	Locknut M8	2
17	Guarding hand ring K5	2
18	Left Armguard Hold assembly KG	1
19	Products M8x25	4
20	Big Washer 8	12
21	Washer 10	4
22	Locknut M6	5
23	Washer 6	4
24	Cross slot pan head screws M6x16	5
25	Right Armguard Hold assembly KG	1
26	Clamp KG	2
27	Triangle nut(black)	4
28	Bolt 8.8 M10x30	2
29	Knife Rest Pipe Circinal Stem	2
30	Triangle Handle M6	1
31	Knife Rest Pipe Assembly KG	1
32	Triangle nut M5(black)	1
33	Handle Cover	2
34	Former Slip Plank KG	1
35	Slip Plank K1	2
36	Cross slot pan head self-tapping scr	4
37	Upper Slip Cover	1
38	After Slip Plank K1	1
39	Triphase Switch	1
40	Locknut M6	2
41	Cross slot pan head screws M4x60	2
42	CCKG Motor	1
43	Enter oil block KG	2
44	Washer 20	1
45	Inhale oil block KG	1
46	Inhale Oil Pipe KG	1
47	Gear Pump C1	1
48	Seal cover KG	1
49	Filter K	1
50	Short oil block A2	1

C108爆炸图零件明细

51	Washer Groupware 20	8
52	Inner Hexangular Screw M8x35	2
53	Jacket KG	1
54	Big Washer 6	15
55	Cross slot pan head screws M6x10	3
56	Machine Shelf K8	1
57	Axle combination KG	2
58	Washer 24	2
59	Wheel (black)	2
60	Spring Washer 10	2
61	Bolt M10x20	2
62	Wheel Cover(black)	2
63	Nether Axis CCS	1
64	Snap Washer-Shaft 22	4
65	Clip 4	1
66	Tense Pipe KG	1
67	Tense Pole KG	1
68	Oily Vat KG	1
69	Triangle Handle(black)	1
70	Side pad K	2
71	Lower Slip Plank KG	1
72	Lever KG	1
73	Washer 16	1
74	Tense Pipe Sleeve KG	1
75	Short Axis D	1
76	Inner Hexangular Screw M8x10	2
77	Cross slot pan head screws M5x18	4
78	Oil Stem A1	1
79	Difference Oil Pipe C1	1
80	Upper Handle Cover	2
81	Sleeve	1
82	Washer 5	4
83	Nether Handle Cover	2
84	Spring Washer 8	4
85	Nut M5	5
86	Inner Hexangular Screw M8x90	2
87	Nozzle Cover	30
88	O-ring 25*2.65	20 (其中30件免费)
89	Dipstick	30
90	Valve A6	1
91	Right angle flow nipple H	1
92	Above Trave Oil Pipe KG	1
93	Oil Stem A6	1
94	Working Oil Pipe KG	1
95	Doble Steel Wire Hoop 20-26	2
96	Oil-proof pipe 16	1
97	Motor Brace	4
98	Big Washer 8	4
99		
100		