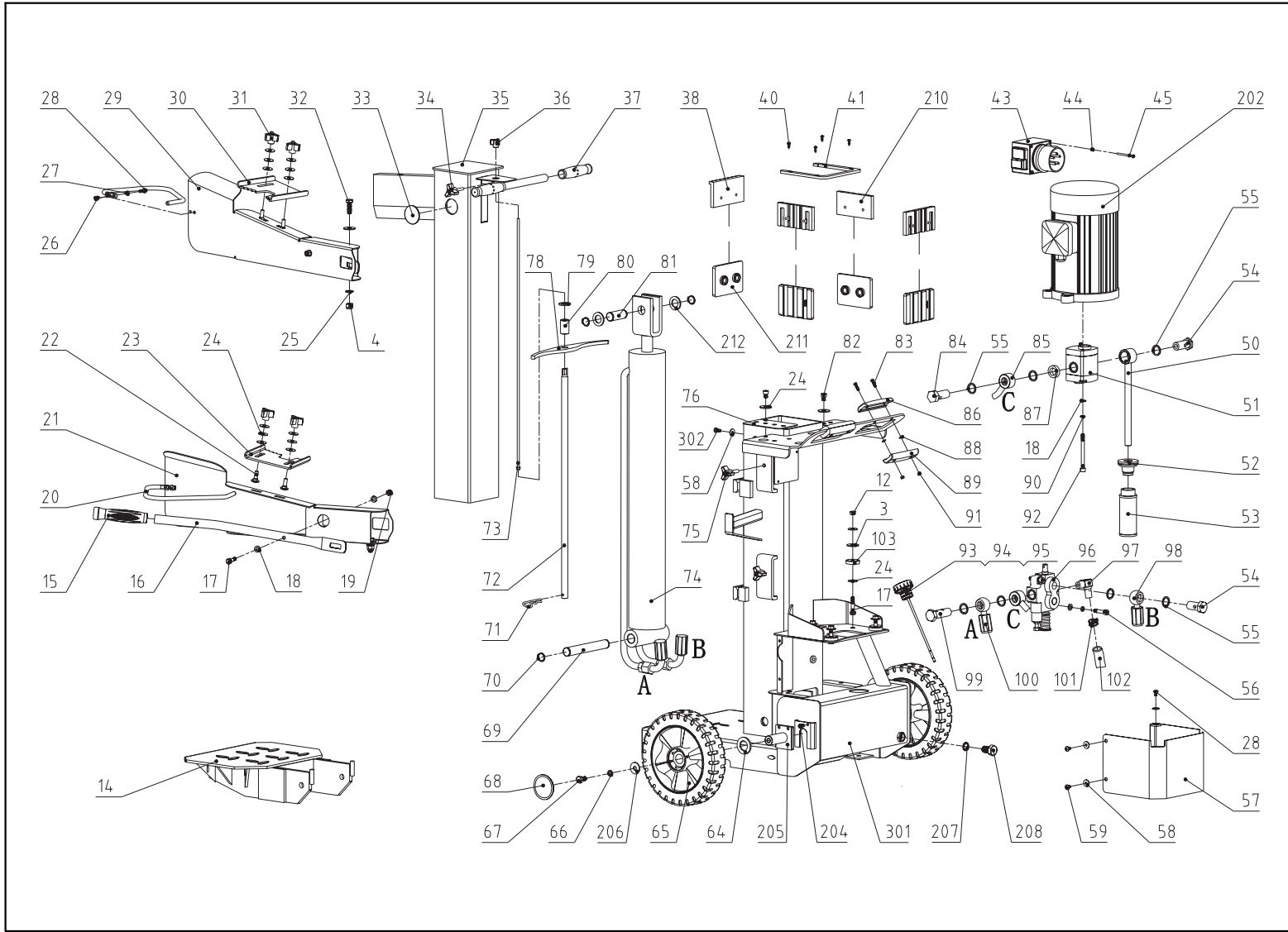


PARTS SCHEMATIC



65889UK00M100

C108爆炸图零件明细

65889 Part list		
NO.	NAME	Qty
3	Big Washer 10	6
4	Locknut M10	2
12	Nut M8	3
14	Log Support KG	1
15	Handle Cover(black)	2
16	Handle KG	2
17	Bolt 8.8 M8x40	6
18	Washer 8	8
19	Locknut M8	2
20	Guarding hand ring K5	2
21	Left Armguard Hold assembly KG	1
22	Products M8x25	4
23	EB Clamp 1	1
24	Big Washer 8	20
25	Washer 10	4
26	Locknut M6	5
27	Washer 6	4
28	Cross slot pan head screws M6x16	6
29	Right Armguard Hold assembly KG	1
30	EB Clamp 2	1
31	Triangle nut(black)	4
32	Bolt 8.8 M10x30	2
33	Knife Rest Pipe Circinal Stem	2
34	Triangle Handle M6	1
35	Knife Rest Pipe Assembly KG	1
36	Triangle nut M5(black)	1
37	Handle Cover	2
38	Former Slip Plank KG	1
40	Cross slot pan head self-tapping scr	4
41	Upper Slip Cover	1
43	Triphase Switch	1
44	Locknut M6	2
45	Cross slot pan head screws M4x60	2
46	CCKG Motor	1
50	Inhale Oil Pipe KG	1
51	Gear Pump C1	1
52	Seal cover KG	1
53	Filter K	1
54	Short oil block A2	2
55	Washer Groupware 20	10
56	Inner Hexangular Screw M8x35	2
57	Jacket KG	1
58	Big Washer 6	13
59	Cross slot pan head screws M6x10	3
64	Washer 24	2
65	Wheel(black)	2
66	Spring Washer 10	2
67	Bolt M10x20	2
68	Wheel Cover(black)	2
69	Nether Axis CCS	1

C108爆炸图零件明细

70	Snap Washer-Shaft 22	4
71	Clip 4	1
72	Tense Pipe KG	1
73	Tense Pole KG	1
74	Oily Vat KG	1
75	Triangle Handle(black)	1
76	Side pad K	2
77	Lower Slip Plank KG	1
78	Lever KG	1
79	Washer 16	1
80	Tense Pipe Sleeve KG	1
81	Short Axis D	1
82	Inner Hexangular Screw M8x10	2
83	Cross slot pan head screws M5x16	4
84	Oil Stem A1	1
85	Difference Oil Pipe C1	1
86	Upper Handle Cover	2
87	Sleeve	1
88	Washer 5	6
89	Nether Handle Cover	2
90	Spring Washer 8	8
91	Nut M5	4
92	Inner Hexangular Screw M8x90	2
93	Oleaginous Cover Z	1
94	O-type ring 25x2.65	2
95	Oil sign KG	1
96	Valve CCA	1
97	Right angle flow nipple H	1
98	Above Trave Oil Pipe KG	1
99	Oil Stem A6	1
100	Working Oil Pipe KG	1
101	Doble Steel Wire Hoop 20-26	2
102	Oil-proof pipe 16	1
103	Motor Brace	4
204	Bolt M6x8	2
205	Axle combination K9	2
206	Big Washer 10	2
207	Washer Groupware 16	1
208	Bolt M16x25	1
210	Upper Slip Plank MA	3
211	Lower Slip Plank MA	4
212	Axial Washer	2
301	Machine Shelf KG	1
302	Cross slot pan head screws M6x14	8