

SRM-420TES/U

Serial Number

38000001-38999999

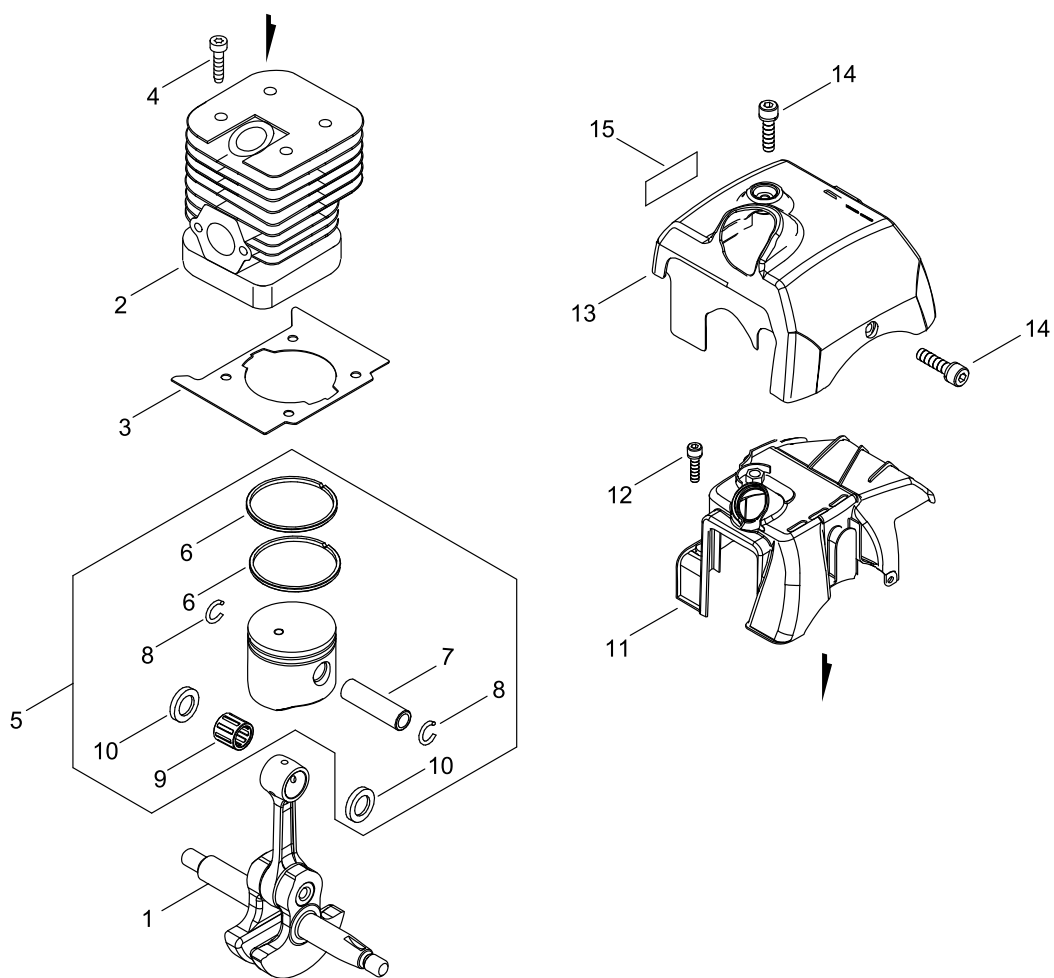
Last updated date

15/Jan/2023

TABLE OF CONTENTS

| | |
|------------------------------------|----|
| CYLINDER, PISTON, CRANKSHAFT | 1 |
| CRANKCASE | 3 |
| MAGNETO..... | 5 |
| CLUTCH..... | 7 |
| AIR CLEANER, CARBURETOR..... | 9 |
| CARBURETOR..... | 11 |
| FUEL TANK | 13 |
| MUFFLER..... | 15 |
| RECOIL STARTER..... | 17 |
| GEAR CASE, SHIELD | 19 |
| MAIN PIPE, HANDLE..... | 21 |
| THROTTLE..... | 23 |
| ACCESSORIES | 25 |
| NYLON LINE CUTTER | 27 |

CYLINDER, PISTON, CRANKSHAFT



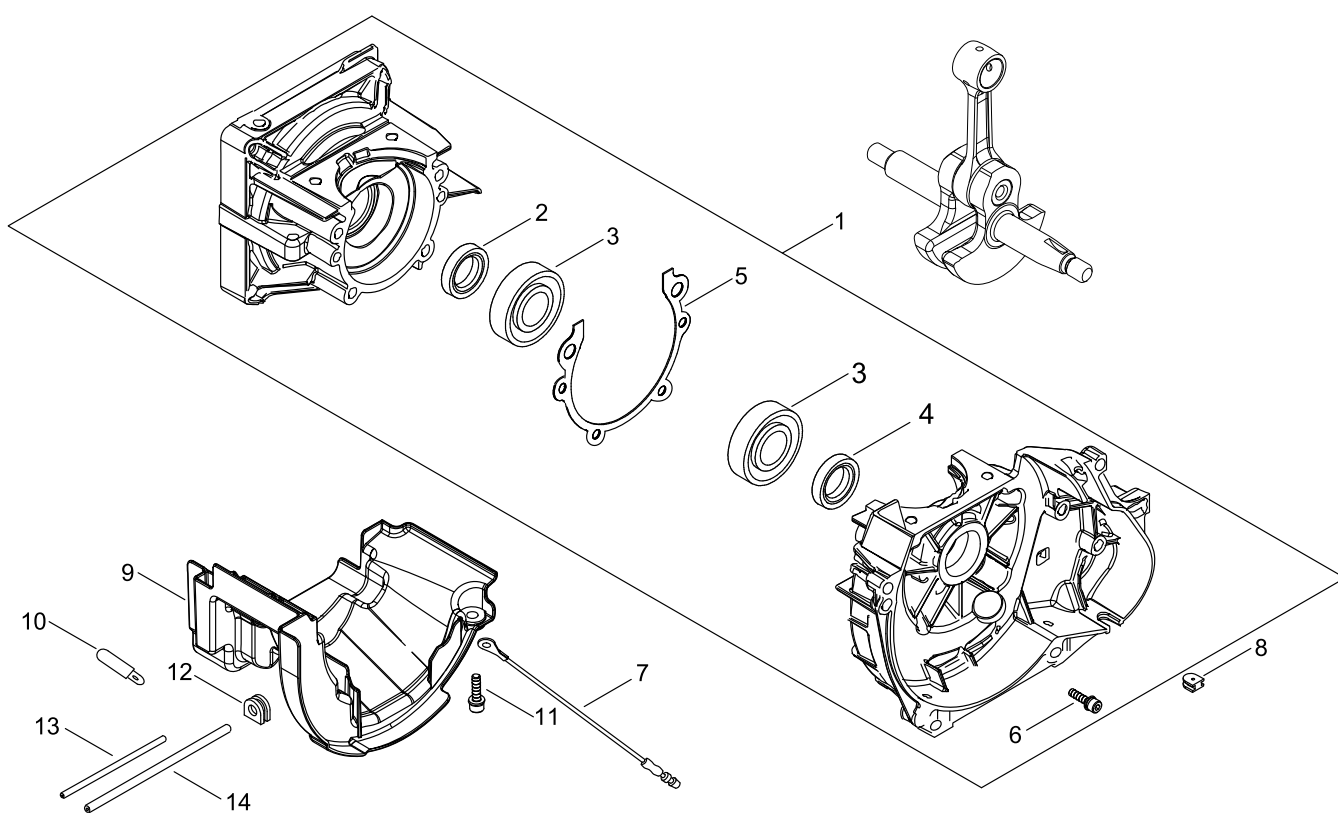
CYLINDER, PISTON, CRANKSHAFT

| Key No. | LV (+) | Parts Number | Parts Description | Qty | Standard | Class |
|---------|--------|--------------|--------------------|-----|-----------------|-------|
| 1 | | A011-001230 | CRANKSHAFT,ASY | 1 | | D |
| 2 | | A130-002070 | CYLINDER | 1 | | D |
| 3 | | V100-000760 | GASKET,CYL | 1 | | B |
| 4 | | V805-000210 | BOLT, TORX 5 | 4 | TB-5*20 12.9 | C |
| 5 | | P021-041390 | PISTON KIT | 1 | | |
| 6 | + | A101-000160 | RING, PISTON | 2 | 40*B1.5*T1.8 | B |
| 7 | + | V608-000000 | PIN,ENG 10 | 1 | | D |
| 8 | + | V580-000010 | RING,END | 2 | 10 | C |
| 9 | + | 100012-19830 | BEARING, NEEDLE | 1 | | B |
| 10 | + | 100014-17330 | SPACER, PISTON PIN | 2 | | C |
| 11 | | A160-002620 | COVER,CYLINDER | 1 | | C |
| 12 | | V835-000000 | BOLT, TORX 5 | 1 | | C |
| 13 | | A160-002632 | COVER,CYLINDER | 1 | SRM-420ES OUTER | C |
| 14 | | V835-000000 | BOLT, TORX 5 | 2 | | C |
| 15 | | X547-002380 | LABEL,ECHO | 1 | ECHO+SRM-420TES | D |

Class : Consumable class

A:Fast moving parts B:Semi-fast moving parts C:Slow moving parts D:Order only as needed

CRANKCASE



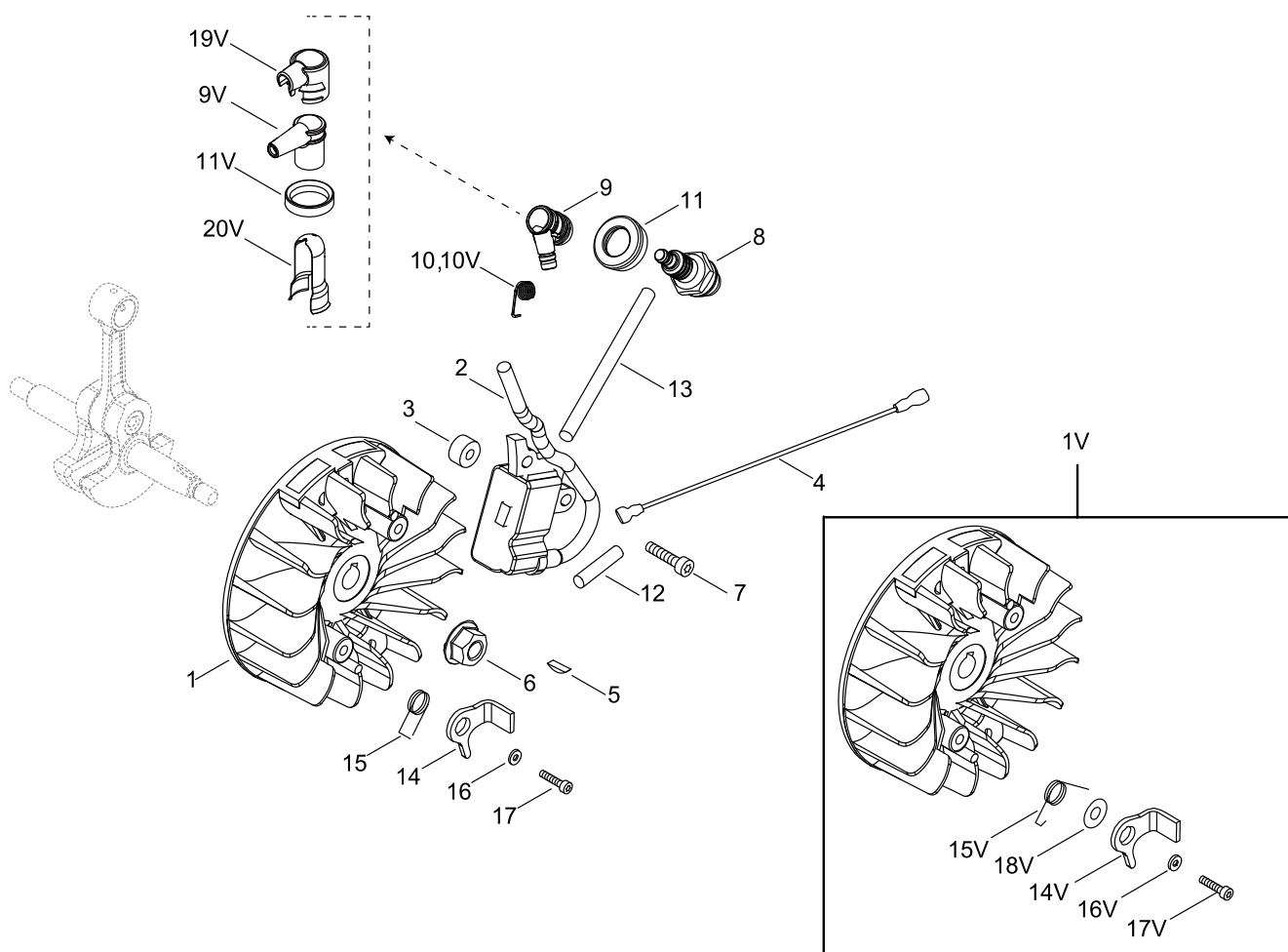
CRANKCASE

| Key No. | LV (+) | Parts Number | Parts Description | Qty | Standard | Class |
|---------|--------|--------------|-------------------|-----|--------------|-------|
| 1 | | P100-002630 | CRANKCASE SET | 1 | | |
| 2 | + | V505-000020 | SEAL,OIL 12 | 1 | 12*22*7 | C |
| 3 | + | 900888-36201 | BEARING, BALL | 2 | 6201 | |
| 4 | + | 100213-05530 | OILSEAL | 1 | ISCD 12 22 7 | C |
| 5 | + | V102-000250 | GASKET,CRANKCASE | 1 | | B |
| 6 | + | V805-000290 | BOLT, TORX 5 | 4 | TB-5*35 12.9 | C |
| 7 | | V485-002570 | LEAD | 1 | | C |
| 8 | | 156114-07320 | GROMMET | 1 | | C |
| 9 | | A209-000740 | PLATE, INSULATOR | 1 | | C |
| 10 | | 159116-21231 | CLAMP | 1 | | C |
| 11 | | V835-000000 | BOLT, TORX 5 | 2 | | C |
| 12 | | 156110-04920 | BUSHING | 1 | | C |
| 13 | | V471-004041 | PIPE | 1 | 3*6*165 | C |
| 14 | | V475-007610 | TUBE | 1 | 8*9*110 | C |

Class : Consumable class

A:Fast moving parts B:Semi-fast moving parts C:Slow moving parts D:Order only as needed

MAGNETO



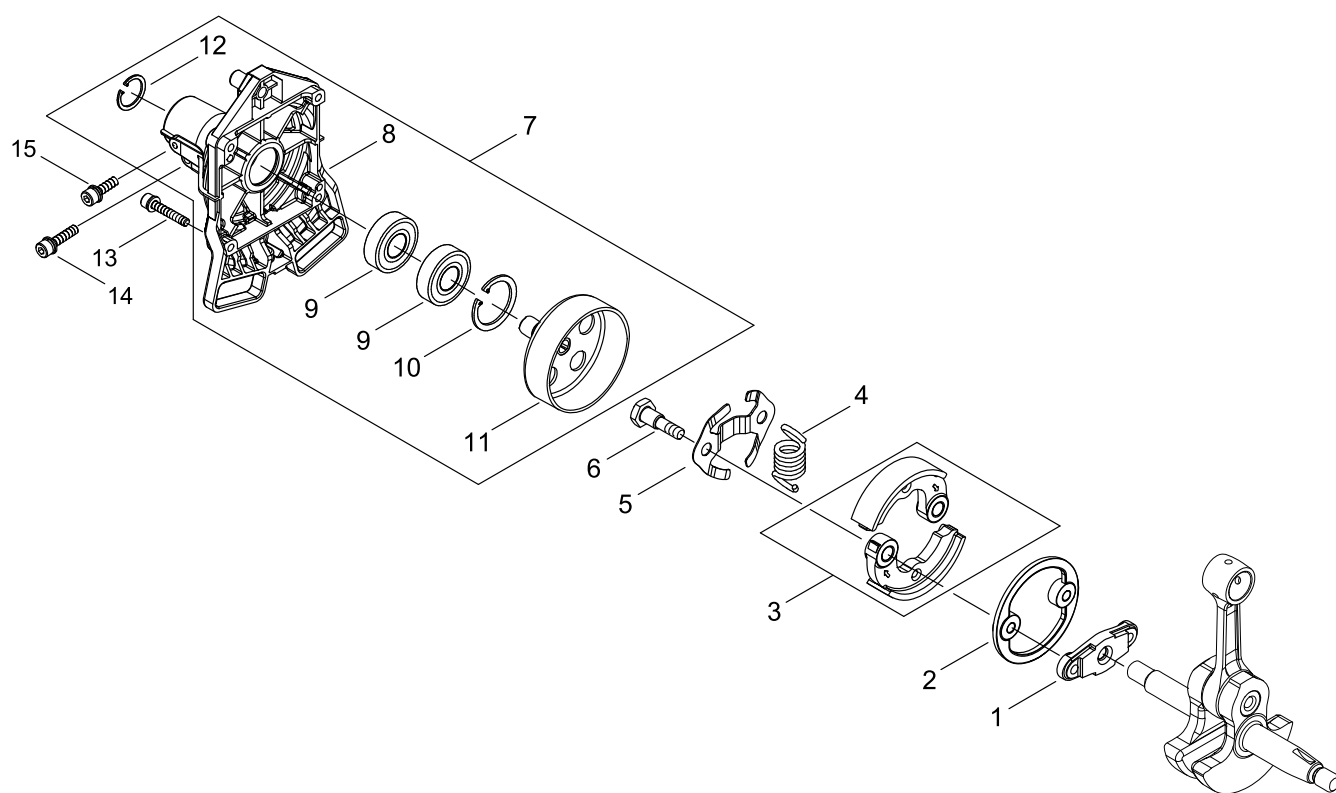
MAGNETO

| Key No. | LV (+) | Parts Number | Parts Description | Qty | Standard | Class |
|---------|--------|--------------|--------------------|-----|---------------|-------|
| 1 | | A409-001210 | ROTOR, MAGNETO | 1 | | C |
| 1V | | P200-001380 | ROTOR,MAGNETO KIT | 1 | | C |
| 2 | | A411-001372 | COIL, IGNITION | 1 | OPPAMA A10030 | C |
| 3 | | V353-000630 | COLLAR,5 | 2 | | C |
| 4 | | V485-002331 | LEAD | 1 | | C |
| 5 | | 100142-12330 | KEY, WOODRUFF | 1 | | C |
| 6 | | 92105-08000 | NUT L, FLANGE | 1 | 8 | |
| 7 | | V805-000150 | BOLT, TORX 5 | 2 | TB-5*16 10.9 | C |
| 8 | | A425-000000 | SPARKPLUG | 1 | BPMR8Y | A |
| 9 | | A427-000060 | CAP,SPARK PLUG | 1 | | C |
| 9V | | A427-000090 | PLUG CAP | 1 | | C |
| 19V | | A429-000110 | PLUG CAP COVER | 1 | | C |
| 11V | | V495-001440 | COVER BAND | 1 | | C |
| 20V | | V151-000050 | SHIELD | 1 | | C |
| 10 | | A426-000010 | TERMINAL,SPARKPLUG | 1 | | C |
| 10V | | 159011-03432 | COIL, SPARK PLUG | 1 | | C |
| 11 | | A429-000090 | COVER,CAP | 1 | | C |
| 12 | | V475-007540 | TUBE | 1 | | C |
| 13 | | V475-007550 | TUBE | 1 | | C |
| 14 | | A514-000280 | PAWL | 2 | | C |
| 14V | + | A514-000280 | PAWL | 2 | | C |
| 15 | | V452-001471 | SPRING,TORSION | 2 | | B |
| 15V | + | V452-001370 | SPRING,TORSION | 2 | | B |
| 16 | | 177247-04630 | SPACER, RATCHET | 2 | 5.2*8*2.1 | C |
| 16V | + | 178070-10860 | SPACER | 2 | | C |
| 17 | | V805-000140 | BOLT, TORX 5 | 2 | TB-5*12 10.9 | C |
| 17V | + | V805-000140 | BOLT, TORX 5 | 2 | TB-5*12 10.9 | C |
| 18V | + | 131911-03460 | WASHER | 2 | | C |

Class : Consumable class

A:Fast moving parts B:Semi-fast moving parts C:Slow moving parts D:Order only as needed

CLUTCH



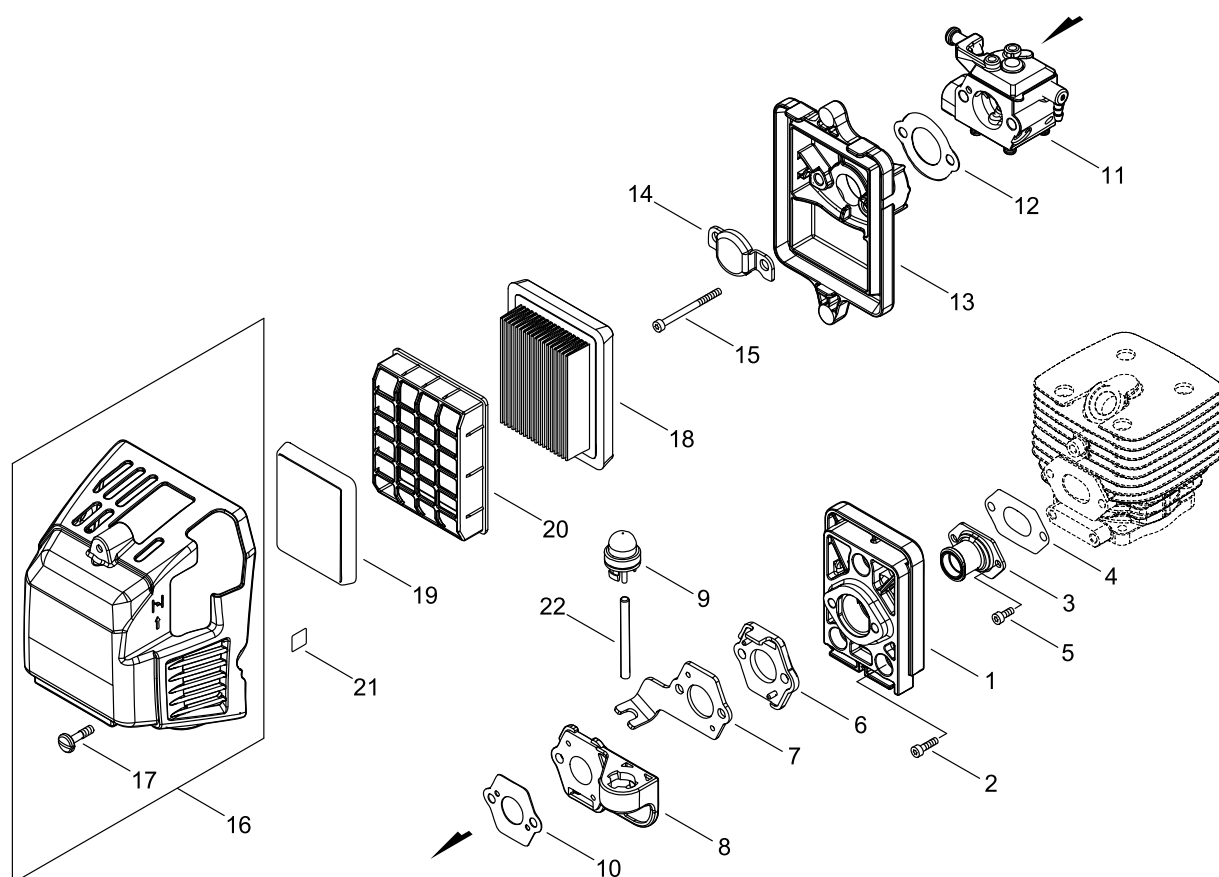
CLUTCH

| Key No. | LV (+) | Parts Number | Parts Description | Qty | Standard | Class |
|---------|--------|--------------|--------------------------|-----|--------------|-------|
| 1 | | A552-000390 | HUB, CLUTCH | 1 | | B |
| 2 | | V376-001980 | SPACER | 1 | | C |
| 3 | | P100-000080 | CLUTCH SHOE SET | 1 | | |
| 4 | | A566-000230 | SPRING, CLUTCH | 1 | | B |
| 5 | | V453-000230 | SPRING, FLAT | 1 | | C |
| 6 | | A557-000190 | SHAFT, CLUTCH | 2 | | B |
| 7 | | P100-006110 | CASE, CLUTCH ASY | 1 | | |
| 8 | + | A570-000291 | CASE, CLUTCH | 1 | | D |
| 9 | + | 94018-46001 | BEARING, BALL | 2 | 6001LB | |
| 10 | + | 900702-00028 | RETAINING RING, INTERNAL | 1 | CR-28 | |
| 11 | + | A556-001540 | DRUM, CLUTCH | 1 | | B |
| 12 | + | 900701-00012 | RETAINING RING, EXTERNAL | 1 | CS-12 | |
| 13 | | V805-000170 | BOLT, TORX 5 | 4 | TB-5*25 10.9 | C |
| 14 | | V805-000160 | BOLT, TORX 5 | 1 | TB-5*20 10.9 | C |
| 15 | | V805-000130 | BOLT, TORX 5 | 1 | TB-5*10 10.9 | C |

Class : Consumable class

A:Fast moving parts B:Semi-fast moving parts C:Slow moving parts D:Order only as needed

AIR CLEANER, CARBURETOR



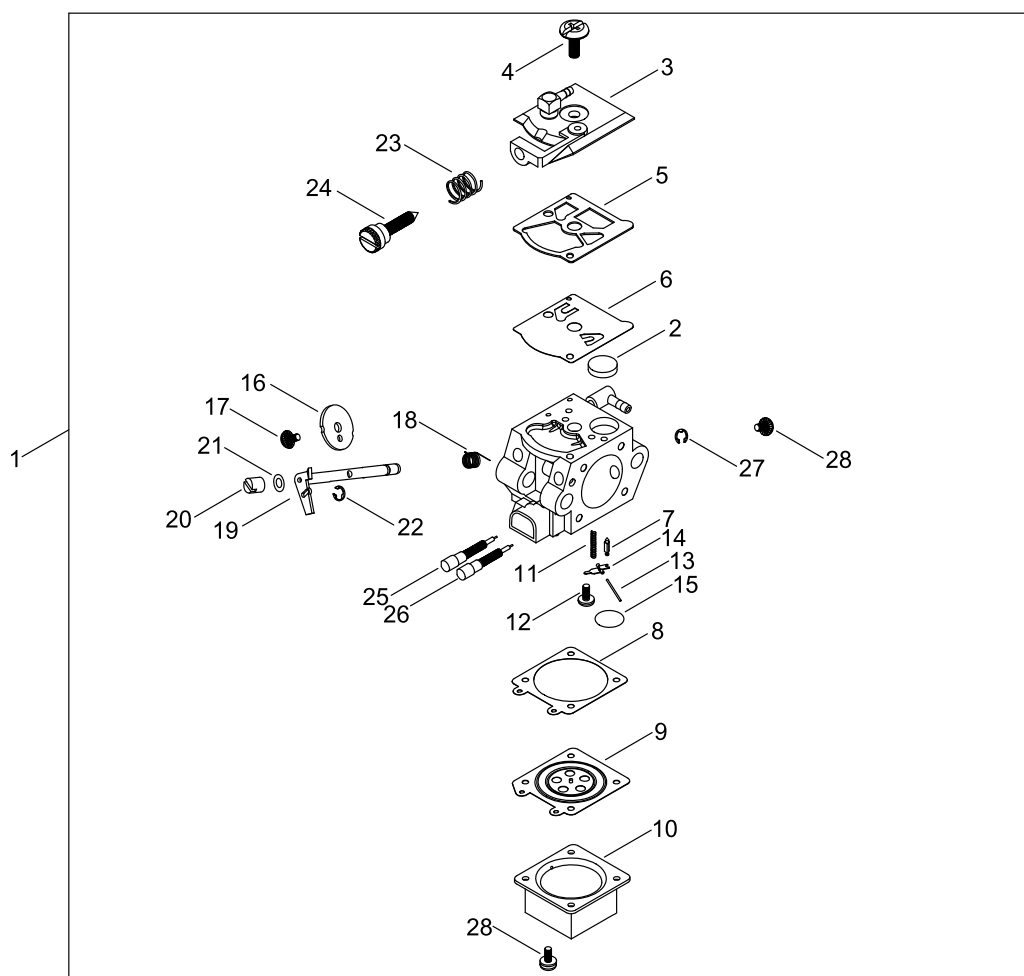
AIR CLEANER, CARBURETOR

| Key No. | LV (+) | Parts Number | Parts Description | Qty | Standard | Class |
|---------|--------|--------------|----------------------|-----|---------------|-------|
| 1 | | A200-000990 | INSULATOR, INTAKE | 1 | | C |
| 2 | | V835-000030 | BOLT, TORX 5 | 3 | TB-5*20 10.9 | C |
| 3 | | A202-000251 | BELLOWS, INTAKE | 1 | | C |
| 4 | | V103-001620 | GASKET,INTAKE | 1 | | A |
| 5 | | V835-000010 | BOLT, TORX 5 | 2 | TB-5*12 10.9 | C |
| 6 | | A209-000720 | PLATE, INSULATOR | 1 | | C |
| 7 | | C487-000410 | HOLDER, CABLE | 1 | | C |
| 8 | | A209-000730 | PLATE, INSULATOR | 1 | | C |
| 9 | | 123181-39130 | PUMP, PRIMER | 1 | | A |
| 10 | | V103-001610 | GASKET,INTAKE | 1 | | A |
| 11 | | A021-004610 | CARBURETOR,DIAPHRAGM | 1 | WT-1170 | B |
| 12 | | V103-000471 | GASKET,INTAKE | 1 | T0.5 | A |
| 13 | | P021-041410 | CLEANER CASE ASY | 1 | | |
| 14 | | A244-000290 | PLATE, PREVENT | 1 | | C |
| 15 | | V805-000100 | BOLT, TORX 5 | 2 | TB-5*65 10.9 | C |
| 16 | | P100-002620 | CLEANER COVER ASY | 1 | | |
| 17 | + | V253-000100 | SCREW,5 | 2 | 5*20 | C |
| 18 | | A226-000361 | ELEMENT, AIR FILTER | 1 | AFP-2010K-300 | A |
| 19 | | A226-001740 | ELEMENT, AIR FILTER | 1 | | A |
| 20 | | A227-000040 | PLATE, ELEMENT | 1 | | C |
| 21 | | X524-001901 | LABEL | 1 | | D |
| 22 | | V471-004051 | PIPE | 1 | 2.4*5*115 | C |

Class : Consumable class

A:Fast moving parts B:Semi-fast moving parts C:Slow moving parts D:Order only as needed

CARBURETOR



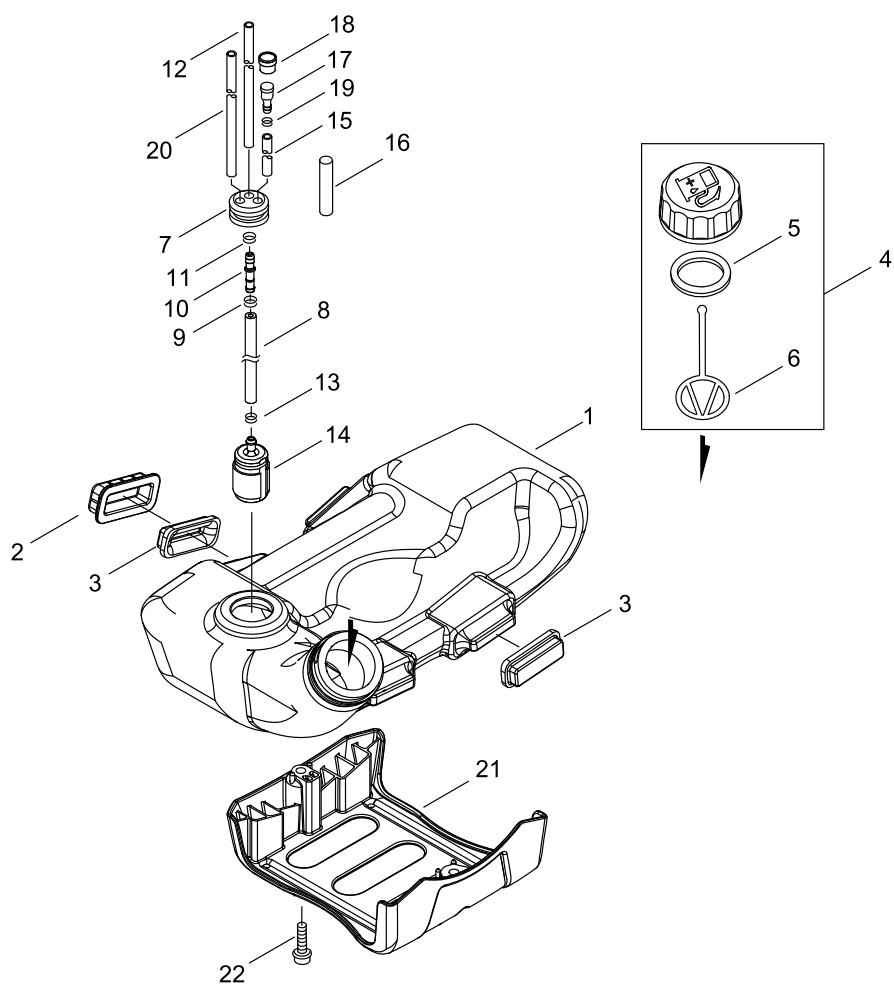
CARBURETOR

| Key No. | LV (+) | Parts Number | Parts Description | Qty | Standard | Class |
|---------|--------|--------------|----------------------|-----|----------|-------|
| 1 | | A021-004610 | CARBURETOR,DIAPHRAGM | 1 | WT-1170 | B |
| 2 | + | 123126-10631 | SCREEN, INLET | 1 | | B |
| 3 | + | P003-003930 | COVER, FUEL PUMP | 1 | | |
| 4 | + | 123110-03930 | SCREW, PUMP COVER | 1 | | D |
| 5 | + | 123125-15030 | GASKET, FUEL PUMP | 1 | | A |
| 6 | + | P003-006270 | DIAPHRAGM, FUEL PUMP | 1 | | |
| 7 | + | 123137-19830 | VALVE, INLET NEEDLE | 1 | | D |
| 8 | + | 123140-03930 | GASKET, M. DIAPHRAGM | 1 | | A |
| 9 | + | P003-001850 | DIAPHRAGM, METERING | 1 | | A |
| 10 | + | 123142-03930 | COVER, M. DIAPHRAGM | 1 | | D |
| 11 | + | 123122-03660 | SPRING, METER. LEVER | 1 | | D |
| 12 | + | 123139-03930 | SCREW, M. LEVER PIN | 1 | | D |
| 13 | + | 123138-03930 | PIN, METERING LEVER | 1 | | D |
| 14 | + | 123123-03930 | LEVER, METERING | 1 | | D |
| 15 | + | 123146-10631 | PLUG, WELCH | 1 | | C |
| 16 | + | 123116-05960 | VALVE, THROTTLE | 1 | | D |
| 17 | + | P003-002380 | SCREW | 1 | | D |
| 18 | + | 123113-47530 | SPRING, THR. RTN. | 1 | | B |
| 19 | + | P003-005020 | SHAFT ASM THROTTLE | 1 | | |
| 20 | + | P003-005460 | SWIVEL | 1 | | |
| 21 | + | 123149-54230 | WASHER | 1 | | C |
| 22 | + | 123173-07930 | CLIP | 1 | | C |
| 23 | + | 123133-04260 | SPRING, IDLE ADJUST | 1 | | D |
| 24 | + | 123134-04260 | SCREW, IDLE ADJUST | 1 | | D |
| 25 | + | P003-004460 | NEEDLE | 1 | | D |
| 26 | + | P003-002270 | NEEDLE | 1 | | D |
| 27 | + | 123127-03930 | CLIP, THROTTLE SHAFT | 1 | | C |
| 28 | + | 123130-02960 | SCREW | 5 | | D |

Class : Consumable class

A:Fast moving parts B:Semi-fast moving parts C:Slow moving parts D:Order only as needed

FUEL TANK



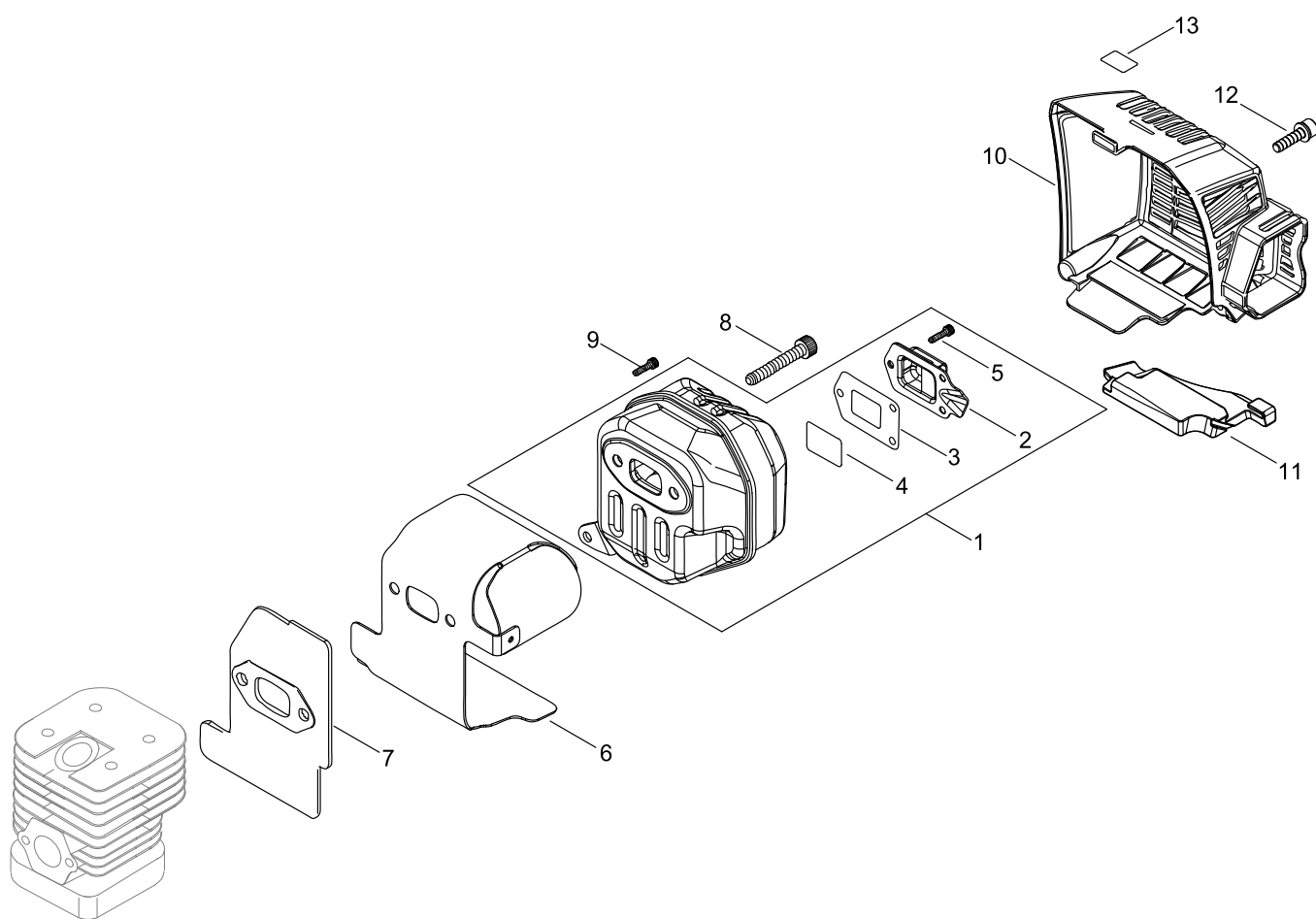
FUEL TANK

| Key No. | LV (+) | Parts Number | Parts Description | Qty | Standard | Class |
|---------|--------|--------------|---------------------|-----|-------------|-------|
| 1 | | A350-002021 | TANK, FUEL | 1 | | C |
| 2 | | V423-000090 | HOLDER,CUSHION | 2 | | C |
| 3 | | 131920-61830 | CUSHION, FUEL TANK | 4 | | B |
| 4 | | P021-012211 | CAP,FUEL ASY | 1 | | C |
| 5 | + | V107-000190 | GASKET,FUEL CAP | 1 | 37.9* T 2.2 | A |
| 6 | + | A365-000060 | CONNECTOR,CAP | 1 | L=123 | B |
| 7 | | 132115-55931 | GROMMET, FUEL | 1 | 3 φ5 | C |
| 8 | | V471-002311 | PIPE | 1 | 3*6*130 | C |
| 9 | | V490-001240 | CLIP | 1 | | C |
| 10 | | V186-000510 | JOINT,PIPE | 1 | | C |
| 11 | | 130111-00530 | CLIP | 1 | 5.5 | C |
| 12 | | V470-000841 | PIPE | 1 | Φ5L字L180 | C |
| 13 | | V490-001240 | CLIP | 1 | | C |
| 14 | | A369-000001 | STRAINER, FUEL | 1 | 125-528 | A |
| 15 | | 130110-16430 | PIPE, IMPULSE | 1 | 3*6*140L | C |
| 16 | | V475-007610 | TUBE | 1 | 8*9*111 | C |
| 17 | | 131300-56431 | VENT ASSEMBLY, FUEL | 1 | | B |
| 18 | | 131328-40630 | COVER, VENT | 1 | | D |
| 19 | | V490-001240 | CLIP | 1 | | C |
| 20 | | V471-003950 | PIPE | 1 | | C |
| 21 | | A175-000331 | STAND | 1 | | C |
| 22 | | V835-000000 | BOLT, TORX 5 | 2 | | C |

Class : Consumable class

A:Fast moving parts B:Semi-fast moving parts C:Slow moving parts D:Order only as needed

MUFFLER



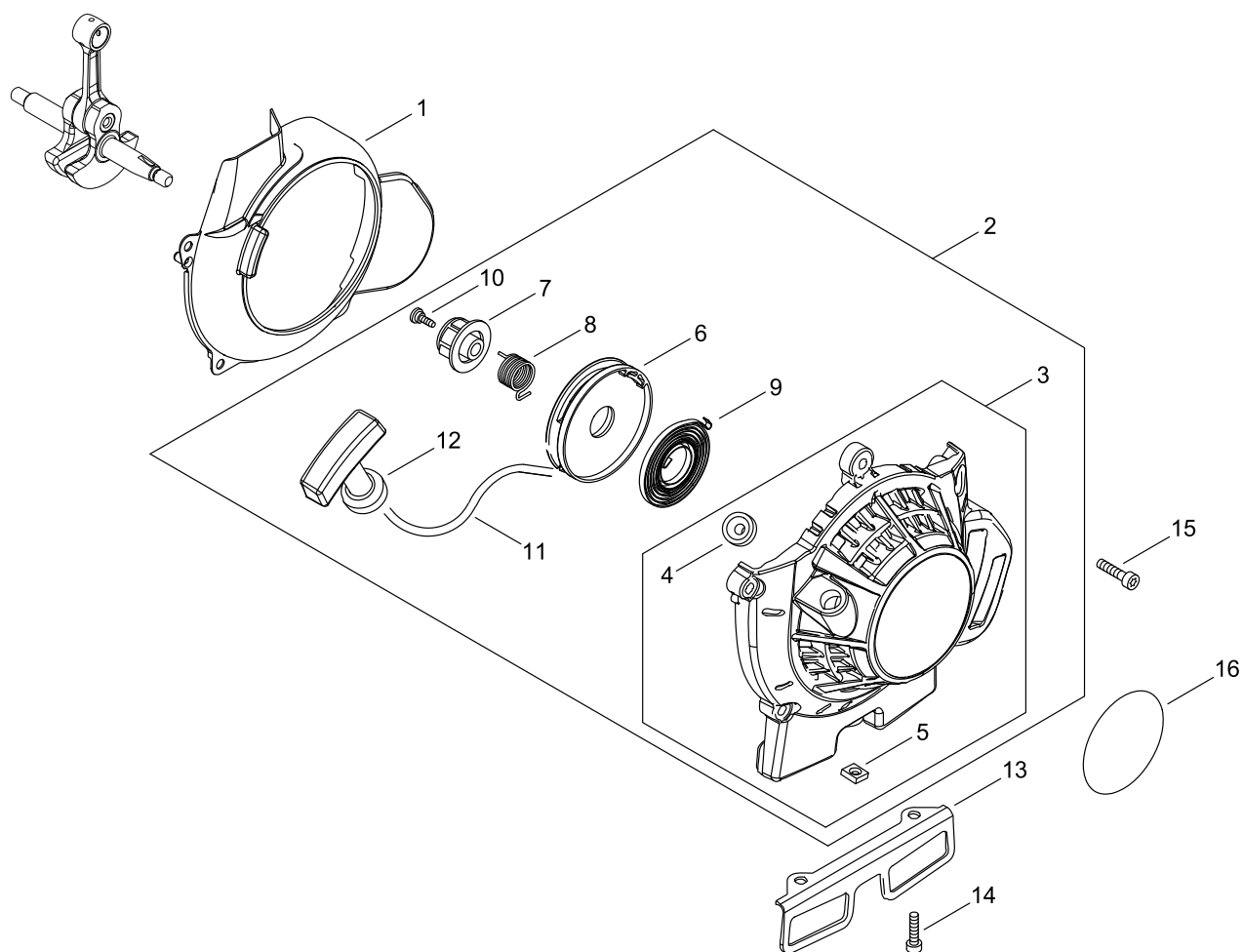
MUFFLER

| Key No. | LV (+) | Parts Number | Parts Description | Qty | Standard | Class |
|---------|--------|--------------|-------------------|-----|--------------|-------|
| 1 | | P100-000070 | MUFFLER ASY | 1 | | |
| 2 | + | A313-001910 | GUIDE, EXHAUST | 1 | | C |
| 3 | + | V104-002040 | GASKET, EXHAUST | 1 | | A |
| 4 | + | 145862-40630 | SCREEN, MUFFLER | 1 | | B |
| 5 | + | V804-000030 | BOLT, TORX 4 | 3 | TB-4*8 10.9 | C |
| 6 | | V104-002020 | GASKET, EXHAUST | 1 | | A |
| 7 | | V104-002030 | GASKET, EXHAUST | 1 | | A |
| 8 | | V806-000050 | BOLT, TORX 6 | 2 | TB-6*20 12.9 | C |
| 9 | | V805-000250 | BOLT, TORX 5 | 1 | TB-5*16 12.9 | C |
| 10 | | A320-001000 | COVER, MUFFLER | 1 | | C |
| 11 | | V541-000540 | SEAL | 1 | | C |
| 12 | | V805-000260 | BOLT, TORX 5 | 2 | TB5*25 10.9 | C |
| 13 | | X505-002310 | LABEL, CAUTION | 1 | HOT CAUTION | D |

Class : Consumable class

A:Fast moving parts B:Semi-fast moving parts C:Slow moving parts D:Order only as needed

RECOIL STARTER



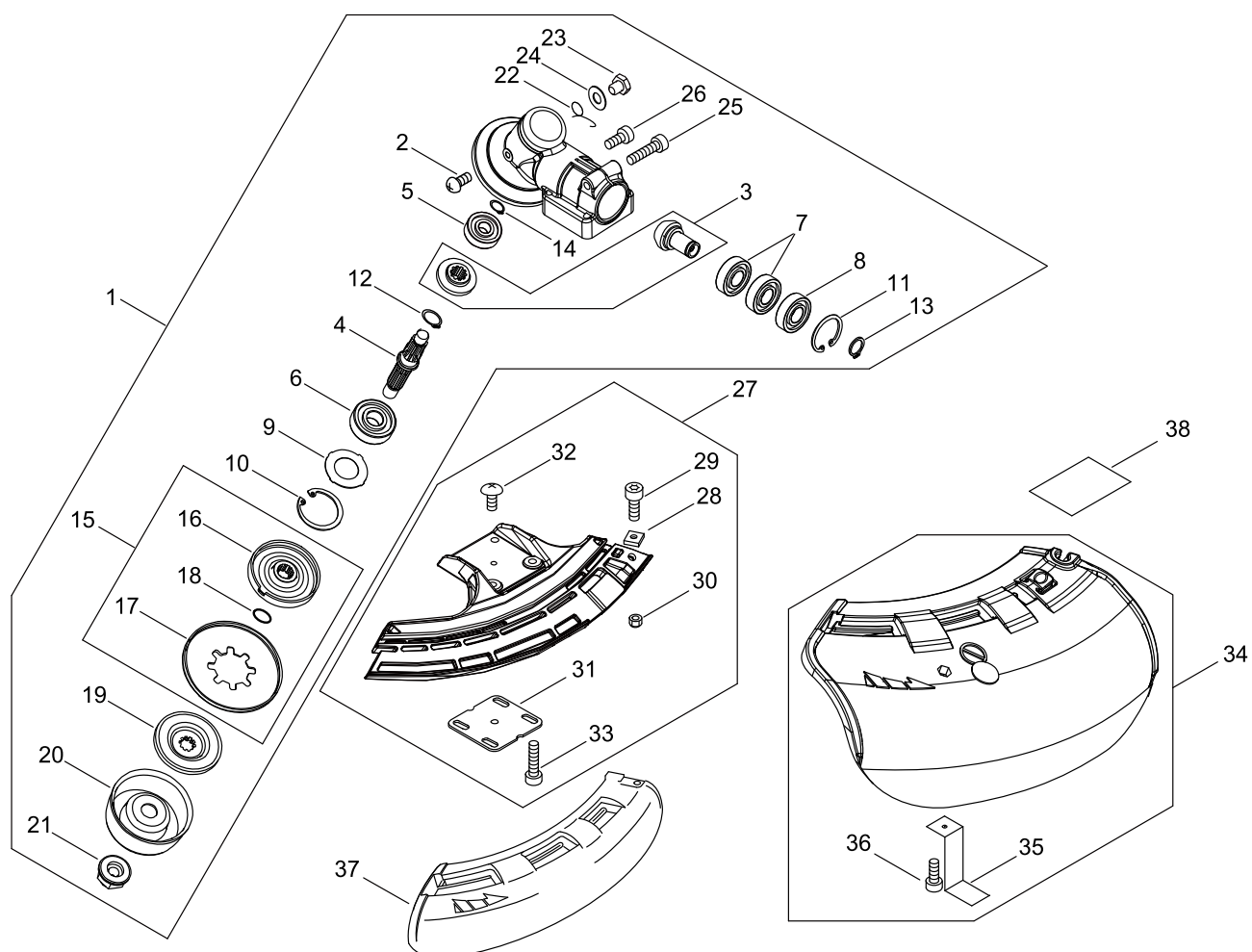
RECOIL STARTER

| Key No. | LV (+) | Parts Number | Parts Description | Qty | Standard | Class |
|---------|--------|--------------|--------------------|-----|--------------|-------|
| 1 | | A172-002240 | COVER,FAN | 1 | | C |
| 2 | | A051-002630 | STARTER,RECOIL ASY | 1 | | B |
| 3 | + | P022-037550 | STARTER CASE | 1 | | |
| 4 | ++ | P022-045770 | GUIDE, ROPE | 1 | | C |
| 5 | ++ | P022-022010 | NUT | 1 | | |
| 6 | + | P022-023140 | DRUM, STARTER | 1 | | |
| 7 | + | P022-033830 | CAM | 1 | | |
| 8 | + | P022-023120 | SPRING,DAMPER | 1 | | |
| 9 | + | P022-004680 | SPRING, SPIRAL | 1 | | B |
| 10 | + | P022-023110 | SCREW | 1 | | |
| 11 | + | P022-023100 | ROPE, STARTER | 1 | | |
| 12 | + | 177228-27030 | GRIP, STARTER | 1 | | C |
| 13 | | A393-000300 | BRACKET,FUEL TANK | 1 | T1.5 | C |
| 14 | | V805-000150 | BOLT, TORX 5 | 2 | TB-5*16 10.9 | C |
| 15 | | V835-000030 | BOLT, TORX 5 | 4 | TB-5*20 10.9 | C |
| 16 | | X502-000900 | LABEL,ECHO | 1 | | D |

Class : Consumable class

A:Fast moving parts B:Semi-fast moving parts C:Slow moving parts D:Order only as needed

GEAR CASE, SHIELD



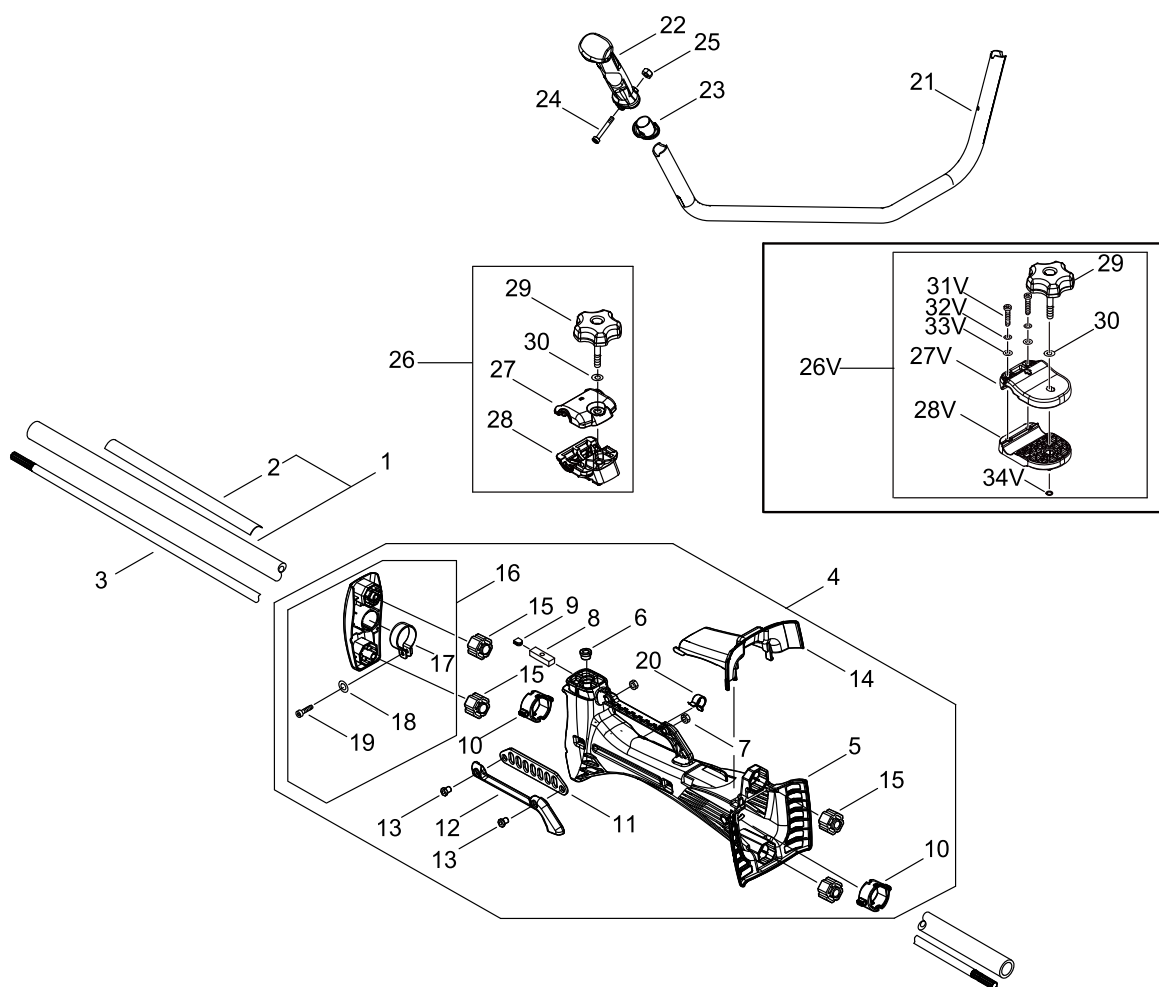
GEAR CASE, SHIELD

| Key No. | LV (+) | Parts Number | Parts Description | Qty | Standard | Class |
|---------|--------|--------------|--------------------|-----|--------------|-------|
| 1 | | P021-043970 | CASE,GEAR | 1 | | |
| 2 | + | 900220-04006 | SCREW | 1 | 4*6 | |
| 3 | + | V000-000190 | GEAR SET, BEVEL | 1 | 2:1 | D |
| 4 | + | C534-000940 | SHAFT, GEAR | 1 | M10 | D |
| 5 | + | 900810-00629 | BEARING, BALL | 1 | 629 | |
| 6 | + | 900812-06302 | BEARING, BALL | 1 | 6302LLU(DDU) | |
| 7 | + | 900800-06001 | BEARING, BALL | 2 | 6001 | |
| 8 | + | 900803-06001 | BEARING, BALL | 1 | 6001Z | |
| 9 | + | V313-000090 | WASHER,CIRCULAR 20 | 1 | | C |
| 10 | + | 900702-00042 | RETAINING RING | 1 | CR-42 | |
| 11 | + | 900702-00028 | RETAINING RING | 1 | CR-28 | |
| 12 | + | 900706-00012 | RETAINING RING | 1 | WR-12 | |
| 13 | + | 900701-00012 | RETAINING RING | 1 | CS-12 | |
| 14 | + | 900701-00009 | RETAINING RING | 1 | CS-9 | |
| 15 | + | C535-000920 | FIXTURE, BLADE | 1 | | B |
| 16 | ++ | C535-000930 | FIXTURE, BLADE | 1 | | B |
| 17 | ++ | 610352-56830 | PLATE, CUP | 1 | | B |
| 18 | ++ | 900720-00012 | O-RING | 1 | P-12 | |
| 19 | + | 610314-52130 | PLATE, ADAPTER (L) | 1 | | B |
| 20 | + | 699229-56830 | PLATE, COVER | 1 | | B |
| 21 | + | 610320-52130 | NUT 10 | 1 | | B |
| 22 | + | V452-001310 | SPRING,TORSION | 1 | | B |
| 23 | + | 610434-50031 | BOLT 8* 8 | 1 | M8*8 | B |
| 24 | + | 900603-50008 | WASHER | 1 | 8.5*18*0.8T | C |
| 25 | + | V806-000100 | BOLT, TORX 6 | 1 | TB-6*30 10.9 | C |
| 26 | + | V805-000130 | BOLT, TORX 5 | 1 | TB-5*10 10.9 | C |
| 27 | | P100-010520 | SHIELD ASY | 1 | | B |
| 28 | + | 900565-00005 | NUT, SQUARE | 1 | 5 | |
| 29 | + | V805-000170 | BOLT, TORX 5 | 1 | TB-5*25 10.9 | C |
| 30 | + | 900562-00005 | NUT, LOCK | 1 | 5 | |
| 31 | + | C552-000200 | PLATE, SHIELD | 1 | | D |
| 32 | + | 91316-04010 | SCREW | 1 | 4*10 | C |
| 33 | + | V805-000260 | BOLT, TORX 5 | 4 | TB5*25 10.9 | C |
| 34 | | P021-043981 | SHIELD ASY, BLADE | 1 | | |
| 35 | + | C554-000001 | KNIFE,CORD | 1 | | B |
| 36 | + | V805-000150 | BOLT, TORX 5 | 1 | TB-5*16 10.9 | C |
| 37 | | C550-000541 | SHIELD, BLADE | 1 | | B |
| 38 | | X530-000560 | LABEL,EYE CATCHER | 1 | HIGH TORQUE | D |

Class : Consumable class

A:Fast moving parts B:Semi-fast moving parts C:Slow moving parts D:Order only as needed

MAIN PIPE, HANDLE



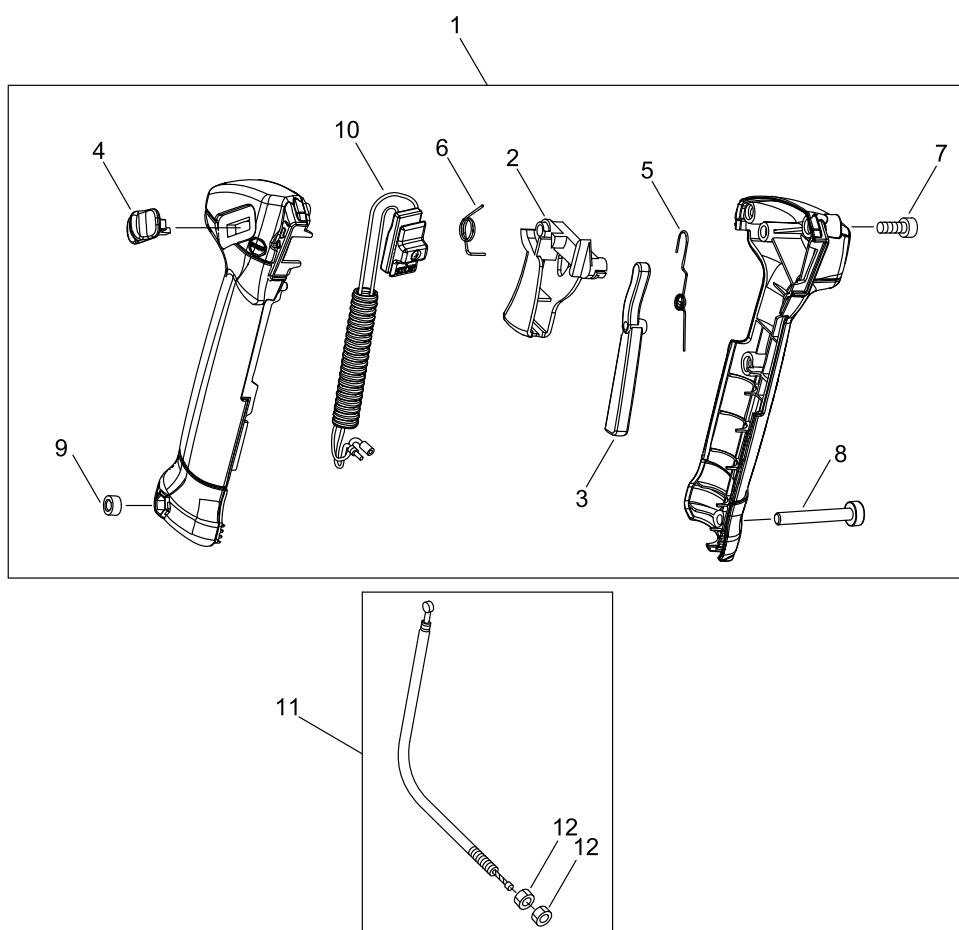
MAIN PIPE, HANDLE

| Key No. | LV (+) | Parts Number | Parts Description | Qty | Standard | Class |
|---------|--------|--------------|---------------------|-----|--------------|-------|
| 1 | | P021-047220 | MAIN PIPE ASY | 1 | | |
| 2 | + | 890617-43130 | LABEL,CAUTION | 1 | | D |
| 3 | | 610011-49931 | SHAFT, DRIVE | 1 | | C |
| 4 | | P100-006161 | HANDLE SUPPORT KIT | 1 | | |
| 4 | | P100-006162 | HANDLE SUPPORT KIT | 1 | | C |
| 5 | + | C415-000173 | SUPPORTER, HANDLE | 1 | | C |
| 6 | + | V355-000751 | COLLAR,8 | 1 | SRM-420ES | C |
| 7 | + | V263-000020 | NUT,5 | 2 | | C |
| 8 | + | V265-000630 | NUT,8 | 1 | 13X42XT10-M8 | C |
| 9 | + | 101538-28230 | GROMMET,PLUG | 1 | | B |
| 10 | + | C427-000050 | STOPPER, HAMDLE | 2 | | D |
| 11 | + | V150-003590 | PLATE,EYE | 1 | | C |
| 12 | + | C648-000030 | HOLDER,LIFTING | 1 | | D |
| 13 | + | V805-000150 | BOLT, TORX 5 | 2 | TB-5*16 10.9 | C |
| 14 | + | C480-000140 | GUIDE, CABLE | 1 | | C |
| 15 | + | V420-004100 | CUSHION | 4 | | B |
| 16 | + | P200-000580 | SUPPORT FIXTURE ASY | 1 | | |
| 16 | + | P200-000581 | SUPPORT FIXTURE ASY | 1 | | D |
| 17 | ++ | V495-003660 | BAND | 1 | | C |
| 18 | ++ | 900603-00006 | WASHER | 1 | 6 | |
| 19 | ++ | V806-000010 | BOLT, TORX 6 | 1 | TB-6*20 10.9 | C |
| 19 | ++ | V806-000050 | BOLT, TORX 6 | 1 | TB-6*20 12.9 | C |
| 20 | + | V490-001220 | CLIP | 1 | | C |
| 21 | | C400-001441 | HANDLE,FRONT | 1 | 22*T2.0 | C |
| 22 | | C403-000810 | GRIP, HANDLE | 1 | | C |
| 23 | | C441-000000 | PIECE,HAND GUARD | 1 | 22 | C |
| 24 | | V805-000070 | BOLT, TORX 5 | 1 | TB-5*40 10.9 | C |
| 25 | | 900562-50005 | NUT, LOCK | 1 | 5 | |
| 26 | | P100-006150 | PIPE FIXTURE SET | 1 | | |
| 27 | + | C423-000960 | FIXTURE, HANDLE | 1 | 22 | D |
| 28 | + | C423-000970 | FIXTURE, HANDLE | 1 | 22 | D |
| 29 | + | V299-000110 | KNOB,FASTENER | 1 | | C |
| 30 | + | 175049-03920 | WASHER | 1 | | C |
| 26V | | P100-009310 | PIPE FIXTURE SET | 1 | | |
| 27V | + | C423-001070 | FIXTURE, HANDLE | 1 | | D |
| 28V | + | C423-001080 | FIXTURE, HANDLE | 1 | | D |
| 29 | + | V299-000110 | KNOB,FASTENER | 1 | | C |
| 30 | + | 175049-03920 | WASHER | 1 | | C |
| 31V | + | V203-002500 | BOLT,5 | 2 | TB-5*30 | C |
| 32V | + | 900605-00005 | WASHER, SPRING | 2 | 5 | |
| 33V | + | 900620-00005 | WASHER | 2 | 5 | |
| 34V | + | 900720-20007 | O-RING | 1 | P-7 | |

Class : Consumable class

A:Fast moving parts B:Semi-fast moving parts C:Slow moving parts D:Order only as needed

THROTTLE



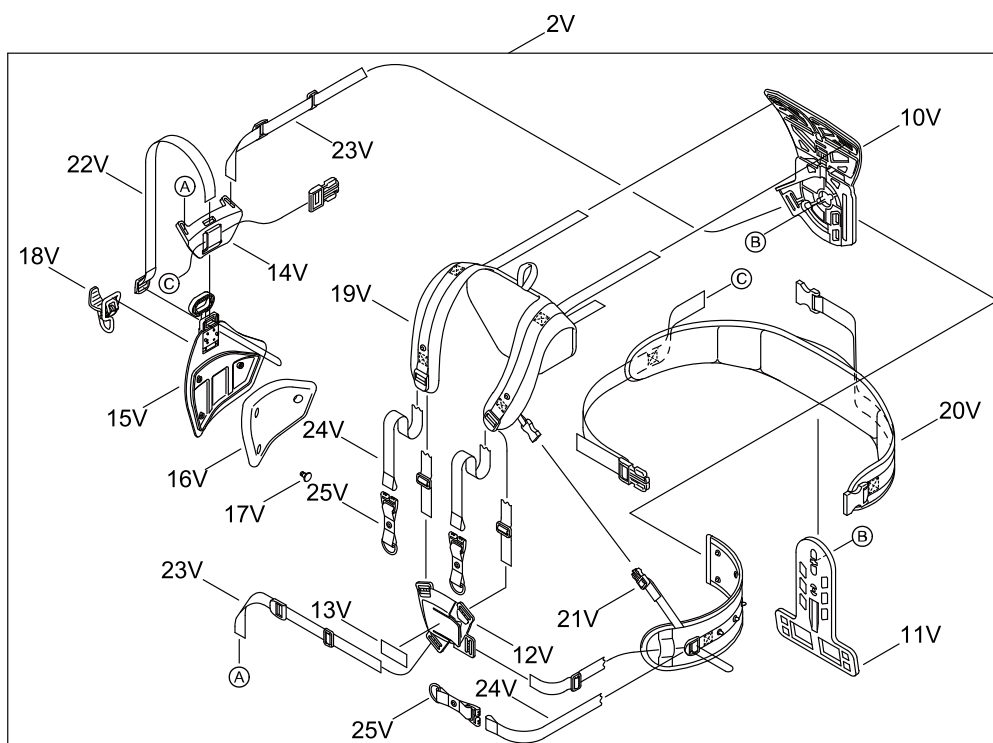
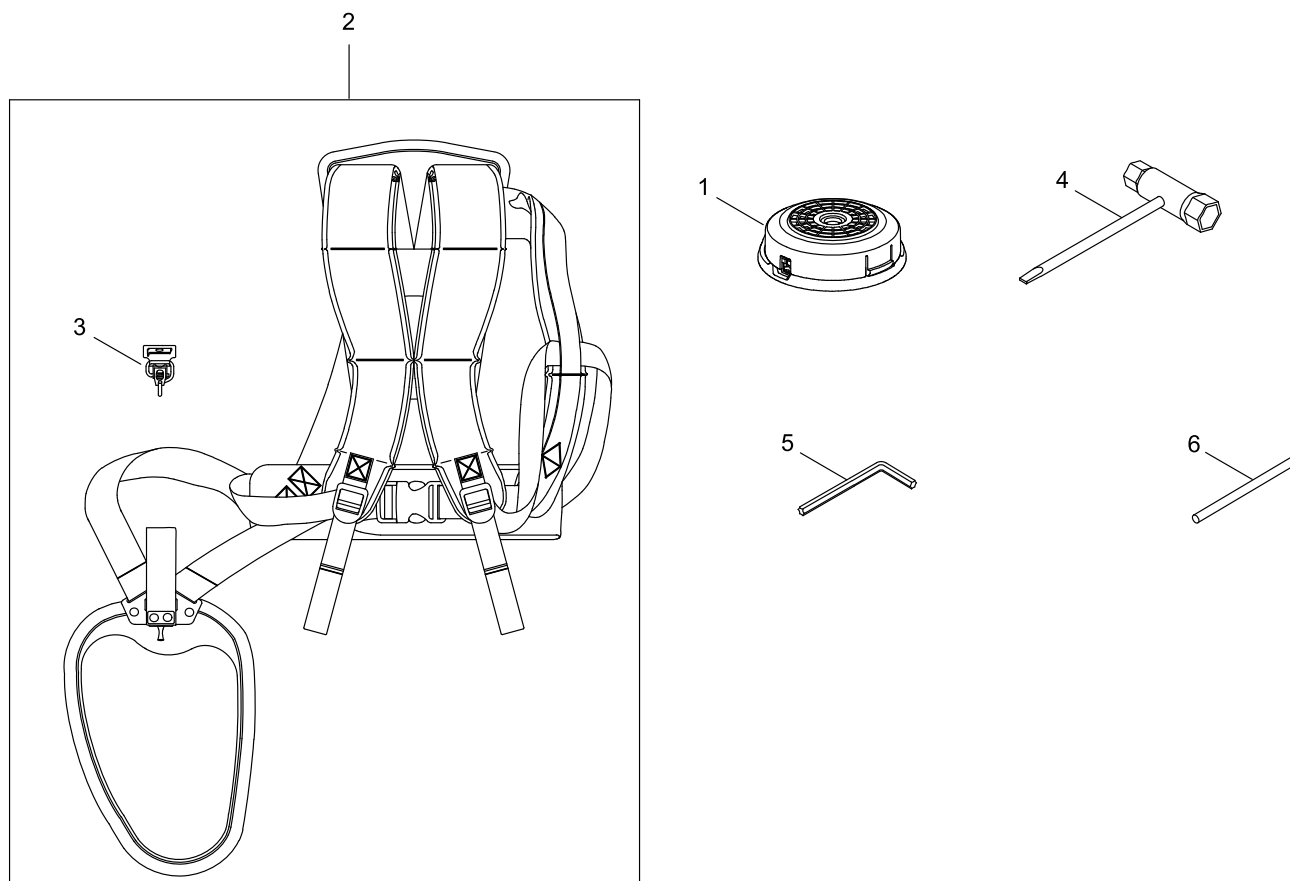
THROTTLE

| Key No. | LV (+) | Parts Number | Parts Description | Qty | Standard | Class |
|---------|--------|--------------|-------------------|-----|-----------------|-------|
| 1 | | P100-006090 | THROTTLE ASY | 1 | | |
| 2 | + | C450-000880 | CONTROL, THROTTLE | 1 | | C |
| 3 | + | C460-000490 | LOCKOUT, THROTTLE | 1 | | C |
| 4 | + | C463-000000 | KNOB,LATCH | 1 | | C |
| 5 | + | V452-001540 | SPRING,TORSION | 1 | | B |
| 6 | + | V452-000060 | SPRING,TORSION | 1 | | B |
| 7 | + | V804-000010 | BOLT, TORX 4 | 3 | TT-4*16 DG 10.9 | C |
| 8 | + | V805-000060 | BOLT, TORX 5 | 1 | TB-5*35 10.9 | C |
| 9 | + | 900500-00005 | NUT | 1 | 5 | |
| 10 | + | P021-041471 | SWITCH,ON OFF ASY | 1 | | |
| 11 | | V430-004690 | CABLE,BOWDEN | 1 | | B |
| 12 | + | 900502-00006 | NUT | 2 | 6 | |

Class : Consumable class

A:Fast moving parts B:Semi-fast moving parts C:Slow moving parts D:Order only as needed

ACCESSORIES



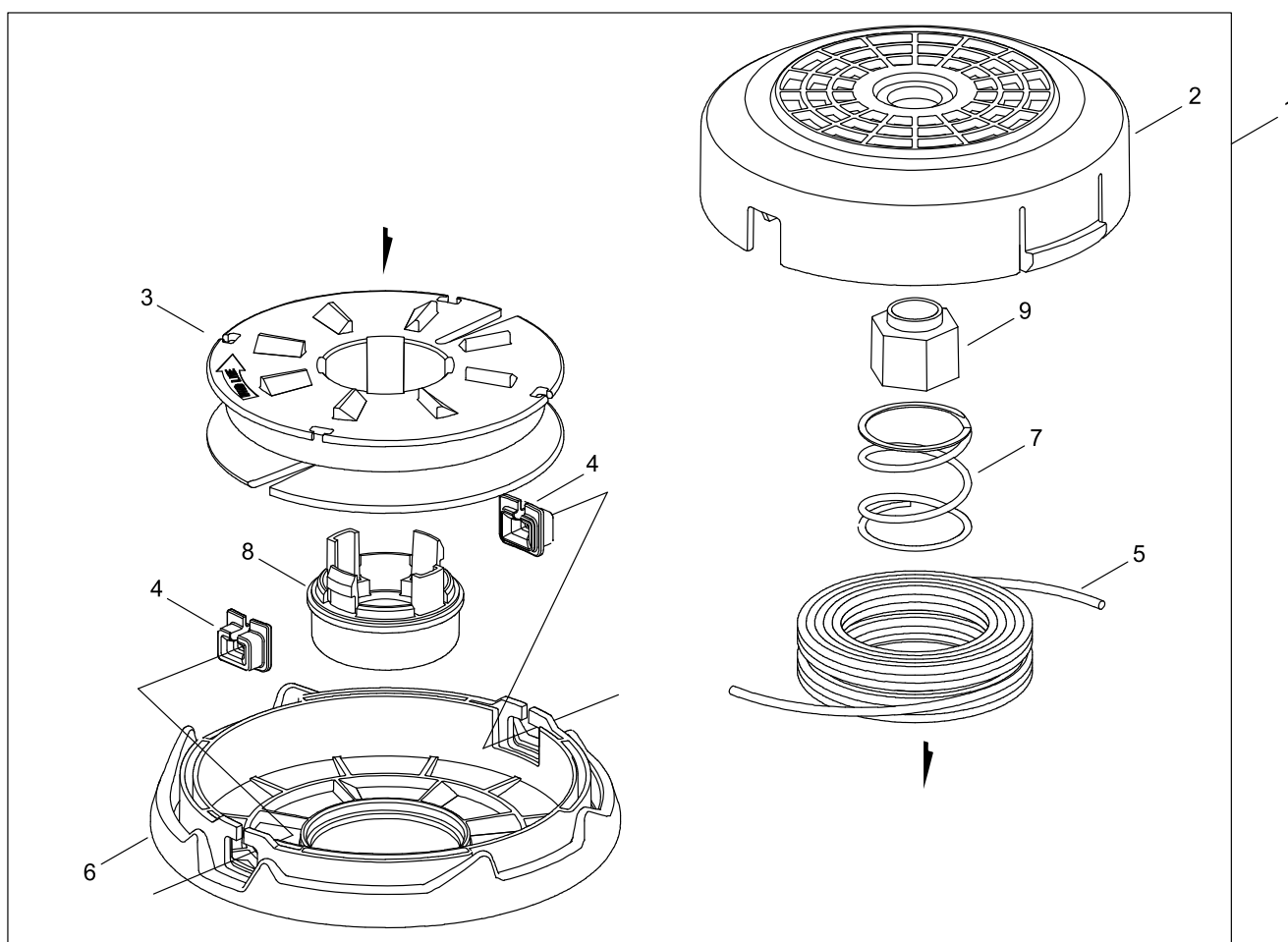
ACCESSORIES

| Key No. | LV (+) | Parts Number | Parts Description | Qty | Standard | Class |
|---------|--------|--------------|---------------------|-----|--------------|-------|
| 1 | | X047-001070 | CUTTER,ASM LINE | 1 | B6 M10L | A |
| 2 | | C062-000511 | HARNESS, SHOULDER | 1 | | B |
| 3 | + | P021-042910 | HOOK ASSY | 1 | | |
| 4 | | X602-000020 | TOOL,WRENCH | 1 | 17*19 L200 | D |
| 5 | | X605-000170 | TOOL,L WRENCH | 1 | | D |
| 6 | | X606-000080 | TOOL,BAR | 1 | 5*120 | D |
| 2V | | C062-000591 | HARNESS, SHOULDER | 1 | ECHO | B |
| 10V | + | C630-000230 | SEAT, BACKPACK | 1 | | C |
| 11V | + | C630-000250 | SEAT, BACKPACK | 1 | | C |
| 12V | + | P021-047390 | BUCKLE, HARNESS SET | 1 | | |
| 13V | + | X502-000390 | LABEL,ECHO | 1 | ECHO 72.5*15 | D |
| 14V | + | C652-000070 | PAD, WAIST | 1 | | D |
| 15V | + | P021-047231 | PAD, WAIST ASY | 1 | | |
| 16V | + | C652-000080 | PAD, WAIST | 1 | | D |
| 17V | + | V491-000490 | CLIP | 3 | #3S53 | C |
| 18V | + | C063-000050 | HOOK,LIFTING | 1 | | C |
| 19V | + | C644-000220 | PAD, HARNESS | 1 | | D |
| 20V | + | C651-000070 | BELT, HARNESS | 1 | ECHO | B |
| 21V | + | C652-000090 | PAD, WAIST | 1 | | D |
| 22V | + | C650-000000 | ADJUSTER,STRAP | 1 | | D |
| 23V | + | C650-000010 | ADJUSTER,STRAP | 2 | | D |
| 24V | + | C650-000020 | ADJUSTER,STRAP | 3 | | D |
| 25V | + | C653-000000 | END,BELT | 3 | | D |

Class : Consumable class

A:Fast moving parts B:Semi-fast moving parts C:Slow moving parts D:Order only as needed

NYLON LINE CUTTER



NYLON LINE CUTTER

| Key No. | LV (+) | Parts Number | Parts Description | Qty | Standard | Class |
|---------|--------|--------------|-------------------|-----|----------|-------|
| 1 | | X047-001070 | CUTTER,ASM LINE | 1 | B6 M10L | A |
| 2 | + | P022-024670 | CASE | 1 | | |
| 3 | + | P022-024660 | LINE HOLDER | 1 | | |
| 4 | + | P022-000710 | EYELET | 2 | T4 | |
| 5 | + | REFER | PRODUCT CATALOGUE | 1 | | |
| 6 | + | P022-024640 | COVER | 1 | | |
| 7 | + | P022-035500 | SPRING | 1 | | |
| 8 | + | P022-024620 | KNOB | 1 | | |
| 9 | + | P022-023180 | NUT | 1 | | |

Class : Consumable class

A:Fast moving parts B:Semi-fast moving parts C:Slow moving parts D:Order only as needed

NUMERICAL PARTS INDEX

| Part No | Part description | Page | Part No | Part description | Page | Part No | Part description | Page |
|--------------|----------------------|------|--------------|-----------------------------|------|-------------|---------------------|------|
| 100012-19830 | BEARING, NEEDLE | 2 | 610434-50031 | BOLT 8* 8 | 20 | A209-000730 | PLATE, INSULATOR | 10 |
| 100014-17330 | SPACER, PISTON PIN | 2 | 699229-56830 | PLATE, COVER | 20 | A209-000740 | PLATE, INSULATOR | 4 |
| 100142-12330 | KEY, WOODRUFF | 6 | 890617-43130 | LABEL,CAUTION | 22 | A226-000361 | ELEMENT, AIR FILTER | 10 |
| 100213-05530 | OILSEAL | 4 | 900220-04006 | SCREW | 20 | A226-001740 | ELEMENT, AIR FILTER | 10 |
| 101538-28230 | GROMMET,PLUG | 22 | 900500-00005 | NUT | 24 | A227-000040 | PLATE, ELEMENT | 10 |
| 123110-03930 | SCREW, PUMP COVER | 12 | 900502-00006 | NUT | 24 | A244-000290 | PLATE, PREVENT | 10 |
| 123113-47530 | SPRING, THR. RTN. | 12 | 900562-00005 | NUT, LOCK | 20 | A313-001910 | GUIDE, EXHAUST | 16 |
| 123116-05960 | VALVE, THROTTLE | 12 | 900562-50005 | NUT, LOCK | 22 | A320-001000 | COVER,MUFFLER | 16 |
| 123122-03660 | SPRING, METER. LEVER | 12 | 900565-00005 | NUT, SQUARE | 20 | A350-002021 | TANK, FUEL | 14 |
| 123123-03930 | LEVER, METERING | 12 | 900603-00006 | WASHER | 22 | A365-000060 | CONNECTOR,CAP | 14 |
| 123125-15030 | GASKET, FUEL PUMP | 12 | 900603-50008 | WASHER | 20 | A369-000001 | STRAINER, FUEL | 14 |
| 123126-10631 | SCREEN, INLET | 12 | 900605-00005 | WASHER, SPRING | 22 | A393-000300 | BRACKET,FUEL TANK | 18 |
| 123127-03930 | CLIP, THROTTLE SHAFT | 12 | 900620-00005 | WASHER | 22 | A409-001210 | ROTOR, MAGNETO | 6 |
| 123130-02960 | SCREW | 12 | 900701-00009 | RETAINING RING | 20 | A411-001372 | COIL, IGNITION | 6 |
| 123133-04260 | SPRING, IDLE ADJUST | 12 | 900701-00012 | RETAINING RING, EXTERNAL | 8 | A425-000000 | SPARKPLUG | 6 |
| 123134-04260 | SCREW, IDLE ADJUST | 12 | 900701-00012 | RETAINING RING | 20 | A426-000010 | TERMINAL,SPARKPLUG | 6 |
| 123137-19830 | VALVE, INLET NEEDLE | 12 | 900702-00028 | RETAINING RING, INTERNAL | 8 | A427-000060 | CAP,SPARK PLUG | 6 |
| 123138-03930 | PIN, METERING LEVER | 12 | 900702-00028 | RETAINING RING | 20 | A427-000090 | PLUG CAP | 6 |
| 123139-03930 | SCREW, M. LEVER PIN | 12 | 900702-00042 | RETAINING RING | 20 | A429-000090 | COVER,CAP | 6 |
| 123140-03930 | GASKET, M. DIAPHRAGM | 12 | 900706-00012 | RETAINING RING | 20 | A429-000110 | PLUG CAP COVER | 6 |
| 123142-03930 | COVER, M. DIAPHRAGM | 12 | 900720-00012 | O-RING | 20 | A514-000280 | PAWL | 6 |
| 123146-10631 | PLUG, WELCH | 12 | 900720-20007 | O-RING | 22 | A552-000390 | HUB, CLUTCH | 8 |
| 123149-54230 | WASHER | 12 | 900800-06001 | BEARING, BALL | 20 | A556-001540 | DRUM, CLUTCH | 8 |
| 123173-07930 | CLIP | 12 | 900803-06001 | BEARING, BALL | 20 | A557-000190 | SHAFT, CLUTCH | 8 |
| 123181-39130 | PUMP, PRIMER | 10 | 900810-00629 | BEARING, BALL | 20 | A566-000230 | SPRING, CLUTCH | 8 |
| 130110-16430 | PIPE, IMPULSE | 14 | 900812-06302 | BEARING, BALL | 20 | A570-000291 | CASE,CLUTCH | 8 |
| 130111-00530 | CLIP | 14 | 900888-36201 | BEARING, BALL | 4 | C062-000511 | HARNESS, SHOULDER | 26 |
| 131300-56431 | VENT ASSEMBLY, FUEL | 14 | 91316-04010 | SCREW | 20 | C062-000591 | HARNESS, SHOULDER | 26 |
| 131328-40630 | COVER, VENT | 14 | 92105-08000 | NUT L, FLANGE | 6 | C063-000050 | HOOK,LIFTING | 26 |
| 131911-03460 | WASHER | 6 | 94018-46001 | BEARING, BALL | 8 | C400-001441 | HANDLE,FRONT | 22 |
| 131920-61830 | CUSHION, FUEL TANK | 14 | A011-001230 | CRANKSHAFT,ASY | 2 | C403-000810 | GRIP, HANDLE | 22 |
| 132115-55931 | GROMMET, FUEL | 14 | A021-004610 | CARBURETOR, DIAPHRAGM | 10 | C415-000173 | SUPPORTER, HANDLE | 22 |
| 145862-40630 | SCREEN, MUFFLER | 16 | A021-004610 | CARBURETOR, DIAPHRAGM | 12 | C423-000960 | FIXTURE, HANDLE | 22 |
| 156110-04920 | BUSHING | 4 | A051-002630 | STARTER,RECOIL ASY | 18 | C423-000970 | FIXTURE, HANDLE | 22 |
| 156114-07320 | GROMMET | 4 | A101-000160 | RING, PISTON | 2 | C423-001070 | FIXTURE, HANDLE | 22 |
| 159011-03432 | COIL, SPARK PLUG | 6 | A130-002070 | CYLINDER | 2 | C423-001080 | FIXTURE, HANDLE | 22 |
| 159116-21231 | CLAMP | 4 | A160-002620 | COVER,CYLINDER | 2 | C427-000050 | STOPPER, HAMDLE | 22 |
| 175049-03920 | WASHER | 22 | A160-002632 | COVER,CYLINDER | 2 | C441-000000 | PIECE,HAND GUARD | 22 |
| 177228-27030 | GRIP, STARTER | 18 | A172-002240 | COVER,FAN | 18 | C450-000880 | CONTROL, THROTTLE | 24 |
| 177247-04630 | SPACER, RATCHET | 6 | A175-000331 | STAND | 14 | C460-000490 | LOCKOUT, THROTTLE | 24 |
| 178070-10860 | SPACER | 6 | A200-000990 | INSULATOR, INTAKE | 10 | C463-000000 | KNOB,LATCH | 24 |
| 610011-49931 | SHAFT, DRIVE | 22 | A202-000251 | BELLOWS, INTAKE | 10 | C480-000140 | GUIDE, CABLE | 22 |
| 610314-52130 | PLATE, ADAPTER (L) | 20 | A209-000720 | PLATE, INSULATOR | 10 | C487-000410 | HOLDER, CABLE | 10 |
| 610320-52130 | NUT 10 | 20 | | | | C534-000940 | SHAFT, GEAR | 20 |
| 610352-56830 | PLATE, CUP | 20 | | | | C535-000920 | FIXTURE, BLADE | 20 |

NUMERICAL PARTS INDEX

| Part No | Part description | Page | Part No | Part description | Page | Part No | Part description | Page |
|-------------|----------------------|------|-------------|---------------------|------|-------------|------------------|------|
| C535-000930 | FIXTURE, BLADE | 20 | P022-024660 | LINE HOLDER | 28 | V430-004690 | CABLE,BOWDEN | 24 |
| C550-000541 | SHIELD, BLADE | 20 | P022-024670 | CASE | 28 | V452-000060 | SPRING,TORSION | 24 |
| C552-000200 | PLATE, SHIELD | 20 | P022-033830 | CAM | 18 | V452-001310 | SPRING,TORSION | 20 |
| C554-000001 | KNIFE,CORD | 20 | P022-035500 | SPRING | 28 | V452-001370 | SPRING,TORSION | 6 |
| C630-000230 | SEAT, BACKPACK | 26 | P022-037550 | STARTER CASE | 18 | V452-001471 | SPRING,TORSION | 6 |
| C630-000250 | SEAT, BACKPACK | 26 | P022-045770 | GUIDE, ROPE | 18 | V452-001540 | SPRING,TORSION | 24 |
| C644-000220 | PAD, HARNESS | 26 | P100-000070 | MUFFLER ASY | 16 | V453-000230 | SPRING,FLAT | 8 |
| C648-000030 | HOLDER,LIFTING | 22 | P100-000080 | CLUTCH SHOE SET | 8 | V470-000841 | PIPE | 14 |
| C650-000000 | ADJUSTER,STRAP | 26 | P100-002620 | CLEANER COVER ASY | 10 | V471-002311 | PIPE | 14 |
| C650-000010 | ADJUSTER,STRAP | 26 | P100-002630 | CRANKCASE SET | 4 | V471-003950 | PIPE | 14 |
| C650-000020 | ADJUSTER,STRAP | 26 | P100-006090 | THROTTLE ASY | 24 | V471-004041 | PIPE | 4 |
| C651-000070 | BELT, HARNESS | 26 | P100-006110 | CASE,CLUTCH ASY | 8 | V471-004051 | PIPE | 10 |
| C652-000070 | PAD, WAIST | 26 | P100-006150 | PIPE FIXTURE SET | 22 | V475-007540 | TUBE | 6 |
| C652-000080 | PAD, WAIST | 26 | P100-006161 | HANDLE SUPPORT KIT | 22 | V475-007550 | TUBE | 6 |
| C652-000090 | PAD, WAIST | 26 | P100-006162 | HANDLE SUPPORT KIT | 22 | V475-007610 | TUBE | 4 |
| C653-000000 | END,BELT | 26 | P100-009310 | PIPE FIXTURE SET | 22 | V475-007610 | TUBE | 14 |
| P003-001850 | DIAPHRAGM, METERING | 12 | P100-010520 | SHIELD ASY | 20 | V485-002331 | LEAD | 6 |
| P003-002270 | NEEDLE | 12 | P200-000580 | SUPPORT FIXTURE ASY | 22 | V485-002570 | LEAD | 4 |
| P003-002380 | SCREW | 12 | P200-000581 | SUPPORT FIXTURE ASY | 22 | V490-001220 | CLIP | 22 |
| P003-003930 | COVER, FUEL PUMP | 12 | P200-001380 | ROTOR,MAGNETO KIT | 6 | V490-001240 | CLIP | 14 |
| P003-004460 | NEEDLE | 12 | REFER | PRODUCT CATALOGUE | 28 | V491-000490 | CLIP | 26 |
| P003-005020 | SHAFT ASM THROTTLE | 12 | V000-000190 | GEAR SET, BEVEL | 20 | V495-001440 | COVER BAND | 6 |
| P003-005460 | SWIVEL | 12 | V100-000760 | GASKET,CYL | 2 | V495-003660 | BAND | 22 |
| P003-006270 | DIAPHRAGM, FUEL PUMP | 12 | V102-000250 | GASKET,CRANKCASE | 4 | V505-000020 | SEAL,OIL 12 | 4 |
| P021-012211 | CAP,FUEL ASY | 14 | V103-000471 | GASKET,INTAKE | 10 | V541-000540 | SEAL | 16 |
| P021-041390 | PISTON KIT | 2 | V103-001610 | GASKET,INTAKE | 10 | V580-000010 | RING,END | 2 |
| P021-041410 | CLEANER CASE ASY | 10 | V103-001620 | GASKET,INTAKE | 10 | V608-000000 | PIN,ENG 10 | 2 |
| P021-041471 | SWITCH,ON OFF ASY | 24 | V104-002020 | GASKET,EXHAUST | 16 | V804-000010 | BOLT, TORX 4 | 24 |
| P021-042910 | HOOK ASSY | 26 | V104-002030 | GASKET,EXHAUST | 16 | V804-000030 | BOLT, TORX 4 | 16 |
| P021-043970 | CASE,GEAR | 20 | V104-002040 | GASKET,EXHAUST | 16 | V805-000060 | BOLT, TORX 5 | 24 |
| P021-043981 | SHIELD ASY, BLADE | 20 | V107-000190 | GASKET,FUEL CAP | 14 | V805-000070 | BOLT, TORX 5 | 22 |
| P021-047220 | MAIN PIPE ASY | 22 | V150-003590 | PLATE,EYE | 22 | V805-000100 | BOLT, TORX 5 | 10 |
| P021-047231 | PAD, WAIST ASY | 26 | V151-000050 | SHIELD | 6 | V805-000130 | BOLT, TORX 5 | 8 |
| P021-047390 | BUCKLE, HARNESS SET | 26 | V186-000510 | JOINT,PIPE | 14 | V805-000130 | BOLT, TORX 5 | 20 |
| P022-000710 | EYELET | 28 | V203-002500 | BOLT,5 | 22 | V805-000140 | BOLT, TORX 5 | 6 |
| P022-004680 | SPRING, SPIRAL | 18 | V253-000100 | SCREW,5 | 10 | V805-000150 | BOLT, TORX 5 | 6 |
| P022-022010 | NUT | 18 | V263-000020 | NUT,5 | 22 | V805-000150 | BOLT, TORX 5 | 18 |
| P022-023100 | ROPE, STARTER | 18 | V265-000630 | NUT,8 | 22 | V805-000150 | BOLT, TORX 5 | 20 |
| P022-023110 | SCREW | 18 | V299-000110 | KNOB,FASTENER | 22 | V805-000150 | BOLT, TORX 5 | 22 |
| P022-023120 | SPRING,DAMPER | 18 | V313-000090 | WASHER,CIRCULAR 20 | 20 | V805-000160 | BOLT, TORX 5 | 8 |
| P022-023140 | DRUM, STARTER | 18 | V353-000630 | COLLAR,5 | 6 | V805-000170 | BOLT, TORX 5 | 8 |
| P022-023180 | NUT | 28 | V355-000751 | COLLAR,8 | 22 | V805-000170 | BOLT, TORX 5 | 20 |
| P022-024620 | KNOB | 28 | V376-001980 | SPACER | 8 | V805-000210 | BOLT, TORX 5 | 2 |
| P022-024640 | COVER | 28 | V420-004100 | CUSHION | 22 | V805-000250 | BOLT, TORX 5 | 16 |
| | | | V423-000090 | HOLDER,CUSHION | 14 | V805-000260 | BOLT, TORX 5 | 16 |

NUMERICAL PARTS INDEX

| Part No | Part description | Page |
|-------------|-------------------|------|
| V805-000260 | BOLT, TORX 5 | 20 |
| V805-000290 | BOLT, TORX 5 | 4 |
| V806-000010 | BOLT, TORX 6 | 22 |
| V806-000050 | BOLT, TORX 6 | 16 |
| V806-000050 | BOLT, TORX 6 | 22 |
| V806-000100 | BOLT, TORX 6 | 20 |
| V835-000000 | BOLT, TORX 5 | 2 |
| V835-000000 | BOLT, TORX 5 | 4 |
| V835-000000 | BOLT, TORX 5 | 14 |
| V835-000010 | BOLT, TORX 5 | 10 |
| V835-000030 | BOLT, TORX 5 | 10 |
| V835-000030 | BOLT, TORX 5 | 18 |
| X047-001070 | CUTTER,ASM LINE | 26 |
| X047-001070 | CUTTER,ASM LINE | 28 |
| X502-000390 | LABEL,ECHO | 26 |
| X502-000900 | LABEL,ECHO | 18 |
| X505-002310 | LABEL,CAUTION | 16 |
| X524-001901 | LABEL | 10 |
| X530-000560 | LABEL,EYE CATCHER | 20 |
| X547-002380 | LABEL,ECHO | 2 |
| X602-000020 | TOOL,WRENCH | 26 |
| X605-000170 | TOOL,L WRENCH | 26 |
| X606-000080 | TOOL,BAR | 26 |